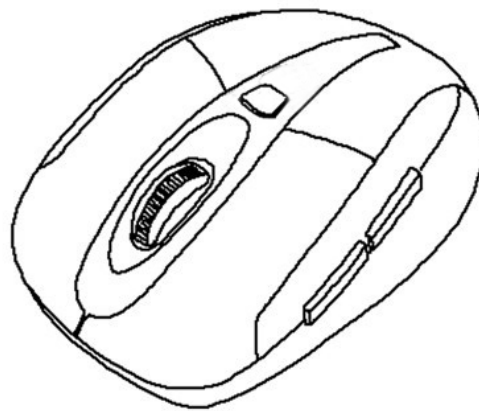


2.4GHz Wireless Optical Mouse

Model #: WM-676



User's Manual

**All brand name and trademarks are the property of their respective companies
Mac and Mac OS X are registered trademarks of Apple Inc;
Windows, Windows XP, Windows Vista, Windows 7 and Windows 8 are registered
trademarks of Microsoft Corporation in the United States and /or other countries.**

USER'S RECORD:

To provide quality customer service and technical support, it is suggested that you keep the following information as well as your store receipt and this user's manual.

Date of Purchase: _____

Model Number: _____

Product Rev Number (located below the UPC on the package): _____

FCC Notice:

Any Changes or modifications not expressly approved by the party responsible for compliance could void the user's authority to operate the equipment.

This device complies with part 15 of the FCC Rules. Operation is subject to the following two conditions: (1) This device may not cause harmful interference, and (2) this device must accept any interference received, including interference that may cause undesired operation.

FCC Radiation Exposure Statement:

This equipment complies with FCC radiation exposure limits set forth for an uncontrolled environment.

This transmitter must not be co-located or operating in conjunction with any other antenna or transmitter.

PACKAGE CONTENTS:

Your new Wireless Optical Mouse will ship with the following items.

- Wireless Optical Nano Mouse
- Nano Receiver
- 2 AAA Batteries
- User's Manual
- Warranty Information

SYSTEM REQUIREMENTS:

Please be sure that you meet all of the system requirements below to avoid difficulties during installation

PC & Mac[®] Computer Compatible works with:

- Windows[®] XP, Windows[®] Vista , Windows[®] 7 and Windows[®] 8 operating systems
- Mac OS X[®] 10.3 and Above
- An Available USB Port

SPECIFICATIONS:

Your new Wireless Optical Mouse complies with the following specifications.

- USB Interface

INSTALLING BATTERIES:

To properly install batteries into your Mouse, please follow the instructions below:

1. Pull the Battery Compartment Cover Release Latch at the bottom of your Mouse and remove the Battery Compartment Cover from your Mouse.



2. Install two AAA Batteries into your Mouse, replace the Battery Compartment Cover back onto your Mouse until it securely locks.



INSTALLATION:

For All Operating Systems

1. Make sure you have successfully installed the Batteries into your Mouse, refer to the **Installing Batteries** section in this manual if necessary.
2. Draw out the Nano Receiver stowed in the bottom of your mouse.



2.4GHz Wireless Optical Mouse
FCC ID:2AB75-WM676MP

2.4GHz Wireless Optical Mouse Receiver
FCC ID: 2AB75WM676REV

3. Turn on your computer, plug the enclosed Nano Receiver into an available USB port on your computer. (**TIP:** If you are not able to find an available USB port on your computer, please refer to the user's manual of your computer for more detail.)



4. Your wireless optical mouse is now ready to be used.

CHANGING THE SPEED OF YOUR MOUSE:

To adjust the speed of the cursor or the scroll button features on your computer, please follow the instructions below:

NOTE: The screenshots show in this section are for demonstration only and your screen may look slightly different but with similar options.

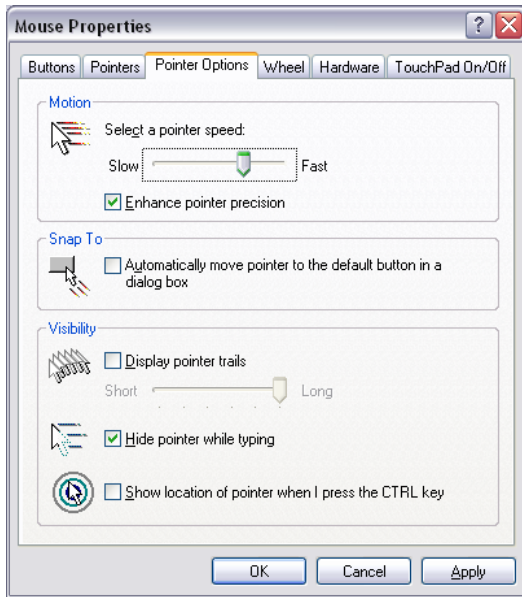
For Windows® operating systems

Open the “**Control Panel**”, and double-click the “**Mouse**” icon to open the mouse properties screen, and then select the “**Pointer Options**”. After you have made your changes; select “**Apply**”, and then “**OK**”.

For Mac OS X® 10.3 and Above

Open the “**System Preferences**”. At the **System Preferences** screen, click the “**Keyboard & Mouse**” icon to open the **Keyboard & Mouse** screen, and then select the “**Mouse**” tab and make your changes.

- Windows® operating systems



Mac OS X® 10.3 and Above

