

The Euro symbol

If your keyboard layout is set to United States-International or United Kingdom or if you have a keyboard with a European layout, you can type the Euro symbol on your keyboard.



Note for US keyboard users: The keyboard layout is set when you first set up Windows. For the Euro symbol to work, the keyboard layout has to be set to United States-International.

To verify the keyboard type in Windows 2000, follow the steps below:

- 1 Click on **Start, Settings, Control Panel**.
- 2 Double-click on **Keyboard**.
- 3 Click on the **Language** tab.
- 4 Verify that the keyboard layout used for "En English (United States)" is set to United States-International.
If not, select and click on **Properties**; then select **United States-International** and click on **OK**.
- 5 Click on **OK**.

To verify the keyboard type in Windows XP, follow the steps below:

- 1 Click on **Start, Control Panel**.
- 2 Double-click on **Regional and Language Options**.
- 3 Click on the **Language** tab and click on **Details**.
- 4 Verify that the keyboard layout used for "En English (United States)" is set to United States-International.
If not, select and click on **ADD**; then select **United States-International** and click on **OK**.

- 5 Click on **OK**.

To type the Euro symbol:

- 1 Locate the Euro symbol on your keyboard.
- 2 Open a text editor or word processor.
- 3 Hold **Alt Gr** and press the Euro symbol.



.....

Note: Some fonts and software do not support the Euro symbol. Please refer to www.microsoft.com/typography/faq/faq12.htm for more information.

Launch Keys

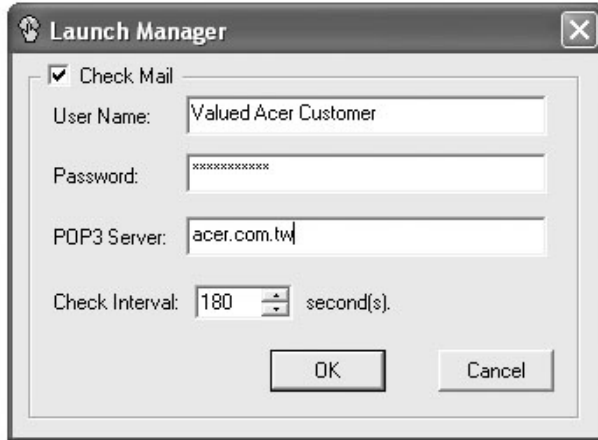
Located at the top of the keyboard are four buttons. These buttons are called launch keys. They are designated as P1, P2 Email button and Web browser button.



Launch key	Default application
P1	User-programmable
P2	User-programmable
Email	Email application
Web browser	Internet browser application

E-Mail Detection

Click right button at the Launch Manager icon on the taskbar and click on E-Mail Detection. In this dialog box, you have the option to enable/disable mail checking, set the time interval for mail checking, etc. If you already have an email account, you can fill in User Name, Password and POP3 Sever in the dialog box. The POP3 Sever is the mail sever where you get your email.



Aside from the email checking function, there is a mail button that is used to launch the email application. It is located above the keyboard right below the LCD.

Touchpad

The built-in touchpad is a pointing device that senses movement on its surface. This means the cursor responds as you move your finger on the surface of the touchpad. The central location on the palmrest provides optimal comfort and support.

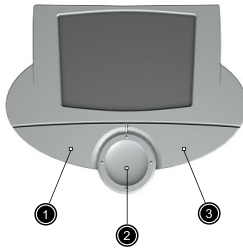


Note: When using an external USB mouse, you can press **Fn-F7** to disable the touchpad.



Touchpad basics

The following items teach you how to use the touchpad:



- Move your finger across the touchpad to move the cursor.
- Press the left (1) and right (3) buttons located on the edge of the touchpad to do selection and execution functions. These two buttons are similar to the left and right buttons on a mouse. Tapping on the touchpad produces similar results.
- Use the 4-way scroll (2) button (top/bottom/left and right) to scroll a page up, down, left or right. This button mimics your cursor

pressing on the vertical and horizontal scroll bars of Windows applications.



Note: Keep your fingers dry and clean when using the touchpad. Also keep the touchpad dry and clean. The touchpad is sensitive to finger movements. Hence, the lighter the touch, the better the response. Tapping harder will not increase the touchpad's responsiveness.

Function	Left button	Right button	Scroll button	Tap
Execute	Click twice quickly			Tap twice (at the same speed as double-clicking a mouse button)
Select	Click once			Tap once
Drag	Click and hold, then use finger to drag the cursor on the touchpad			Tap twice (at the same speed as double-clicking a mouse button) then hold finger to the touchpad on the second tap and drag the cursor
Access context menu		Click once		
Scroll			Click and hold the button in the desired direction (up/down/left/right)	

Storage

This computer supplies you with the following media storage:

- High-capacity Enhanced-IDE hard disk
- Optical drive

Hard disk

The high-capacity hard disk is the answer to your storage needs. This is where your programs and data are stored.

Optical drive

The optical drive bay accepts a wide variety of optional media drive modules for use with your computer. These optional items include:

- CD-ROM drive
- DVD-ROM drive
- DVD/CD-RW drive

Ejecting the optical (CD or DVD) drive tray

To eject the optical drive tray when the computer is turned on, press the drive eject button.



When the power is off, you can eject the drive tray using the emergency eject hole. See page 51.

Using software

Playing DVD movies

When the DVD-ROM drive module is installed in the optical drive bay, you can play DVD movies on your computer.

- 1 Eject the DVD tray and insert a DVD movie disc; then close the DVD tray.



Important! When you launch the DVD player for the first time, the program asks you to input the region code. DVD discs are divided into 6 regions. Once your DVD drive is set to a region code, it will play DVD discs of that region only. You can set the region code a maximum of five times (including the first time), after which the last region code set will remain permanent. Recovering your hard disk does not reset the number of times the region code has been set. Refer to the table below for DVD movie region code information.

- 2 The DVD movie will automatically play after a few seconds.



Note: To change the region code, insert a DVD movie of a different region into the DVD-ROM drive. Please refer to the online help for more information.

Region code	Country or region
1	U.S.A., Canada
2	Europe, Middle East, South Africa, Japan
3	Southeast Asia, Taiwan, Korea (South)
4	Latin America, Australia, New Zealand
5	Former U.S.S.R., parts of Africa, India
6	People's Republic of China

Audio

The computer comes with 18-bit high-fidelity AC'97 stereo audio, and includes a built-in sensitive microphone and dual stereo speakers.



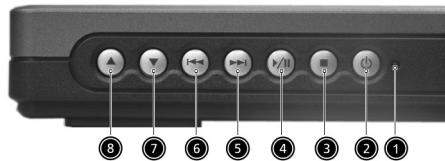
There are audio ports on the right side of the computer. See “Right view” on page 6 for more information on connecting external audio devices.

Adjusting the volume

Adjusting the volume on the computer is as easy as pressing some buttons. See “Hot keys” on page 15 for more informations on adjusting the speaker volume.

Using the Audio DJ feature

The Audio DJ feature allows you to control the playback of music CDs even with the computer turned off.



#	Item	Description
1	Power indicator	Lights when the Audio DJ function is on.
2	Power	Press for more than one second to turn the Audio DJ feature on/off.
3	Stop	Stops audio playback.
4	Play/pause	Plays/pauses audio.
5	Next track	Skip to next audio track.
6	Previous track	Skips to previous audio track.
7	Volume down	Decrease volume.
8	Volume up	Increase volume.

To playback an audio CD, do as follows:

- 1 Press the Audio DJ power button (on the front panel of the computer) until the power indicator lights up to turn on the Audio DJ feature.
- 2 Press the optical drive eject button; then pull out the drive tray.
- 3 Place a music CD on the optical drive spindle until it clicks in place.
- 4 Close the optical drive tray securely.

- 5 You can now press the music playback buttons to begin music playback.

Adjust the volume by using the volume buttons found at the left side of the front panel.

Power management

This computer has a built-in power management unit that monitors system activity. System activity refers to any activity involving one or more of the following devices: keyboard, mouse, floppy drive, hard disk, peripherals connected to the serial and parallel ports. If no activity is detected for a period of time (called an inactivity timeout), the computer stops some or all of these devices in order to conserve energy.

This computer employs a power management scheme that supports ACPI (Advanced Configuration and Power Interface), which allows for maximum power conservation and maximum performance at the same time. Windows handles all power-saving chores for your computer.

Moving around with your TravelMate

This section gives you tips and hints to consider when moving around or traveling with your computer.

Disconnecting from the desktop

Follow these steps to disconnect your computer from external accessories:

- 1 Save your work in progress.
- 2 Remove any media, diskette or compact disc, from the drive(s).
- 3 Shut down the computer.
- 4 Close the display cover.
- 5 Disconnect the cord from the AC adapter.
- 6 Disconnect the keyboard, pointing device, printer, external monitor, and other external devices.
- 7 Disconnect the Kensington lock if you are using one to secure the computer.

Moving around

“when you are just moving within short distances, for example, from your office desk to a meeting room”

Preparing the computer

Before moving the computer, close and latch the display cover to place it in Sleep mode. You can now safely take the computer anywhere you go within the building. To bring the computer out of Sleep mode, open the display; press the power button.

If you are taking the computer to a client's office or a different building, you may choose to shut down the computer:

- 1 Click on **Start, Turn off Computer** (Windows XP).
- 2 Click on **Turn Off** (Windows XP).

- or -

choose to enter hibernation mode.

- 1 Click on Start, Turn off Computer (Windows XP).
- 2 Hold "Shift"
- 3 Click on Hibernation (Windows XP).

Then close and latch the display.

When you are ready to use the computer again, unlatch and open the display; then release the power button.



Note: If the sleep indicator is off, the computer has entered Hibernation mode and turned off. If the power indicator is off but the sleep indicator is on, the computer has entered Sleep mode. In both cases, press the power button to turn the computer back on. Note that the computer may enter Hibernation mode after it is in Sleep mode for a period of time.

What to bring to short meetings

A fully charged battery runs the computer for about 1.5~2 hours under most circumstances. If your meeting is shorter than that, you probably do not need to bring anything with you other than the computer.

What to bring to long meetings

If your meeting will last longer than 1.5 hours or if your battery is not fully charged, you may want to bring the AC adapter with you to plug in your computer in the meeting room.

If the meeting room does not have an electrical outlet, reduce the drain on the battery by putting the computer in Sleep mode. Press **Fn-F4** or close the display cover whenever you are not actively using the computer. To resume, open the display (if closed); then press the power button.

Taking the computer home

“when you are moving from your office to your home or vice versa”

Preparing the computer

After disconnecting the computer from your desktop, follow these steps to prepare the computer for the trip home:

- Check if you have removed all media, diskettes and compact discs, from the drive(s). Failure to remove the media can damage the drive head.
- Pack the computer in a protective case that can prevent the computer from sliding around and cushion it if it should fall.



.....

Caution: Avoid packing items next to the top cover of the computer. Pressure against the top cover can damage the screen

What to bring with you

Unless you already have some items at home, bring the following items with you:

- AC adapter and power cord
- The printed user's guide

Special considerations

Follow these guidelines to protect your computer while traveling to and from work:

- Minimize the effect of temperature changes by keeping the computer with you.
- If you need to stop for an extended period of time and cannot bring the computer with you, leave the computer in the trunk of the car to avoid exposing the computer to excessive heat.
- Changes in temperature and humidity can cause condensation. Allow the computer to return to room temperature, and inspect the screen for condensation before turning on the computer. If the temperature change is greater than 18°F (10°C), allow the computer to come to room temperature slowly. If possible, leave the computer for 30 minutes in an environment with a temperature between outside and room temperature.

Setting up a home office

If you frequently work on your computer at home, you may want to purchase a second AC adapter for use at home. With a second AC adapter, you can avoid transporting the extra weight to and from home.

If you use your computer at home for significant periods of time, you might also want to add an external keyboard, monitor, or mouse.

Traveling with the computer

“when you are moving within a larger distance, for instance, from your office building to a client’s office building or traveling locally”

Preparing the computer

Prepare the computer as if you were taking it home. Make sure that the battery in the computer is charged. Airport security may require you to turn on your computer when bringing it into the gate area.

What to bring with you

Bring the following items with you:

- AC adapter
- Spare, fully-charged battery pack(s)

Special considerations

In addition to the guidelines for taking the computer home, follow these guidelines to protect your computer while traveling:

- Always take the computer as carry-on luggage.
- If possible, have the computer inspected by hand. Airport security X-ray machines are safe, but do not put the computer through a metal detector.
- Avoid exposing floppy disks to hand-held metal detectors.

Traveling internationally with the computer

“when you are moving from country to country”

Preparing the computer

Prepare the computer as you would normally prepare it for traveling.

What to bring with you

Bring the following items with you:

- AC adapter
- Power cords that are appropriate for the country to which you are traveling
- Spare, fully-charged battery packs
- Proof of purchase, in case you need to show it to Customs officials
- International Traveler's Warranty passport

Special considerations

Follow the same special considerations as when traveling with the computer. In addition, these tips are useful when traveling internationally:

- When traveling in another country, check that the local AC voltage and the AC adapter power cord specifications are compatible. If not, purchase a power cord that is compatible with the local AC voltage. Do not use converter kits sold for appliances to power the computer.
- If you are using the modem, check if the modem and connector is compatible with the telecommunications system of the country you are traveling in.

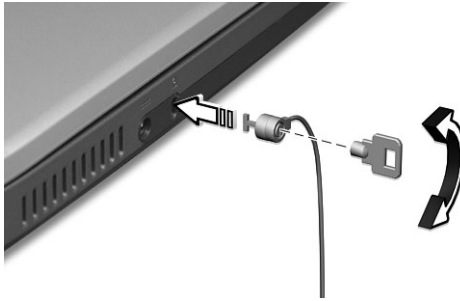
Securing your computer

Your computer is a valuable investment that you need to take care of. Learn how to protect and take care of your computer.

Security features include hardware and software locks — a security notch and passwords.

Using a computer security lock

A security keylock notch located on the **left** panel of the computer lets you connect a Kensington-compatible computer security lock.



Wrap a computer security lock cable around an immovable object such as a table or locked drawer handle. Insert the lock into the notch and turn the key to secure the lock. Some keyless locks are also available.

Using passwords

Passwords protect your computer from unauthorized access. Setting these passwords creates several different levels of protection for your computer and data:

- Supervisor Password prevents unauthorized entry into the BIOS Utility. Once set, you must key-in this password to gain access to the BIOS Utility. See “BIOS Utility” on page 44 for more details.
- User Password secures your computer against unauthorized use. Combine the use of this password with password checkpoints on boot-up and resume from hibernation for maximum security.
- Password on Boot secures your computer against unauthorized use. Combine the use of this password with password checkpoints

on boot-up and resume from hibernation for maximum security.

- Hard Disk Password protects your data by preventing unauthorized access to your hard disk. Even if the hard disk is removed from the computer and moved to another computer, it cannot be accessed without the Hard Disk Password.



.....

Important! Do not forget your Supervisor and Hard Disk Password! If you forget your password, please get in touch with your dealer or an authorized service center.

Entering passwords

When a password is set, a password prompt appears in the left-hand corner of the display screen.

- When the Supervisor Password is set, a prompt appears when you press **F2** to enter the BIOS Utility at boot-up.
- Type the Supervisor Password and press **Enter** to access the BIOS Utility. If you enter the password incorrectly, a warning message appears. Try again and press **Enter**.
- When the User Password is set and the Password on boot parameter is enabled, a prompt appears at boot-up.
- Type the User Password and press **Enter** to use the computer. If you enter the password incorrectly, a warning message appears. Try again and press **Enter**.
- When the Hard Disk Password is set, a prompt appears at boot-up.
- Type the Hard Disk Password and press **Enter** to use the computer. If you enter the password incorrectly, a warning message appears. Try again and press **Enter**.



.....

Important! You have three chances to enter a password. If you fail to enter the password correctly after three tries, the system halts. Press the power button for four seconds to shut down the computer. Then turn on the computer again, and try again. If you fail to enter the Hard Disk Password, please contact your dealer or an authorized service center.

Setting passwords

You can set passwords using the BIOS Utility.

2 Customizing my computer

After learning the basics of your TravelMate computer, let's get acquainted with the advanced features of your computer. In this chapter, you will learn how to add options, upgrade components for better performance, and customize your computer.

Expanding through options

Your TravelMate offers you a complete mobile computing experience.

Connectivity options

Ports allow you to connect peripheral devices to your computer as you would with a desktop PC.

Fax/data modem

Your computer have a built-in V.90/92 56Kbps AC'97 Link fax/data modem.



.....
Warning! This modem port is not compatible with digital phone lines. Plugging this modem into a digital phone line will damage the modem.

To use the fax/data modem port, connect a phone cable from the modem port to a telephone jack.



Start your communications software program.

Built-in network feature

The built-in network feature allows you to connect your computer to an Ethernet-based (10/100 Mbps) network.

To use the network feature, connect an Ethernet cable from the network jack on the right side of the computer to a network jack or hub on your network.



Universal Serial Bus

The Universal Serial Bus (USB) port is a high-speed serial bus which allows you to connect and daisy-chain USB peripherals without taking

up precious system resources. Your computer has three USB 2.0 ports available.



IEEE 1394 port

The computer's IEEE 1394 port allows you to connect to an IEEE 1394 supported devices like a video camera or digital camera.



See your video or digital camera's documentation for details.

PC Card slot

The type II CardBus PC Card slot found on the right side of the computer accepts credit-card-sized cards that enhance the usability and expandability of the computer. These cards should have a PC Card logo on them.

PC Cards (formerly PCMCIA) are add-on cards for portable computers, giving you expansion possibilities long afforded by desktop PCs. Popular PC cards include fax/data modem, LAN, wireless LAN and SCSI cards. CardBus improves on the 16-bit PC card technology by expanding the bandwidth to 32 bits.



Note: Refer to your card's manual for details on how to install and use the card and its functions.

Inserting a PC Card

Insert the card into the slot and make the proper connection (e.g., network cable), if necessary. See your card manual for details.

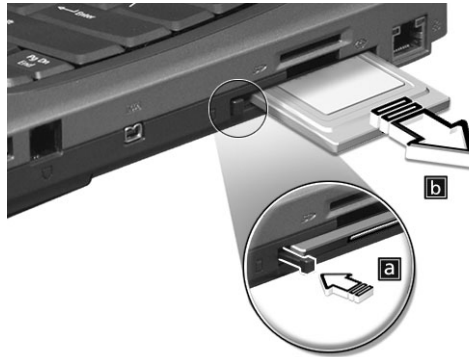


Ejecting a PC Card

Before ejecting a PC Card:

- 1 Exit the application using the card.
- 2 Left-click on the PC Card icon on the taskbar and stop the card operation.

- 3 Press the slot eject button to pop out the eject button (a); then press it again to eject the card (b).



Upgrade options

Your computer delivers superior power and performance. However, some users and the applications they use may demand more. This computer allows you to upgrade key components when you need increased performance.



Note: Contact your authorized dealer if you decide to perform a key component upgrade.

Memory upgrade

Memory is expandable to 2 GB, employing 256/512-MB industry standard soDIMMs (Small Outline Dual Inline Memory Modules). 1024 MB will be available in the future.

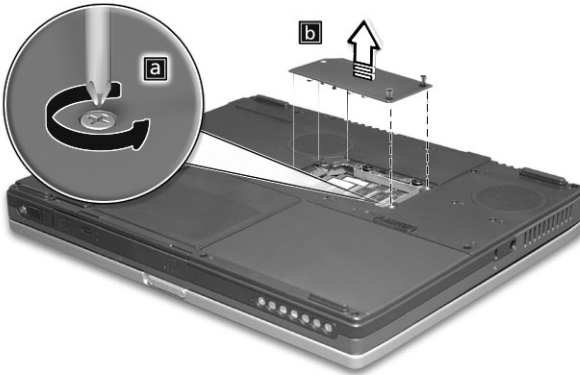
The computer supports DDR 266 (Double Data Rate) SDRAM (Synchronous Dynamic Random Access Memory).

There are two memory slots on your computer, one of which is occupied by standard memory. You can upgrade memory by installing a memory module into the available slot, or replacing the standard memory with a higher-capacity memory module.

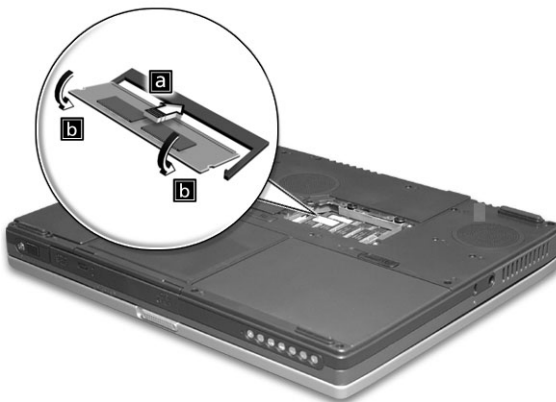
Installing memory

Follow these steps to install memory:

- 1 Turn off the computer, unplug the AC adapter (if connected) and remove the battery pack. Then turn the computer over to access its base.
- 2 Remove the screw from the memory cover (a); then lift up and remove the memory cover (b).



- 3 Insert the memory module diagonally into the slot (a), then gently press it down (b) until it clicks into place.



Using system utilities

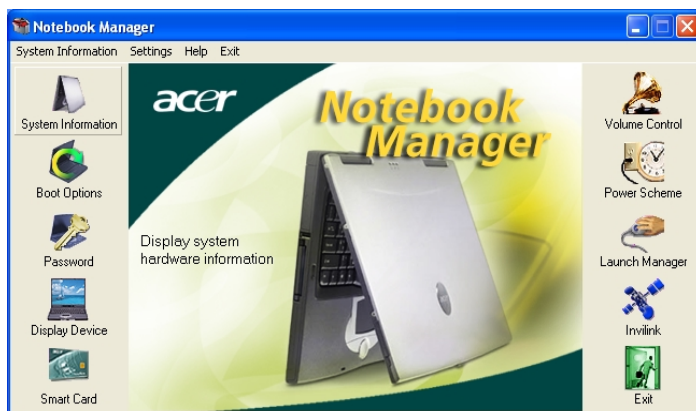
Notebook Manager

The computer has a built-in system setup program called Notebook Manager. The Windows-based Notebook Manager allows you to set passwords, the startup sequence of the drives, and power management settings. It also shows current hardware configurations.

To start the Notebook Manager, press **Fn-F2** or follow these steps:

- 1 Click on **Start, Programs**, then **Notebook Manager**.
- 2 Select the **Notebook Manager** application to run the program.


Click on **Help** for more information.

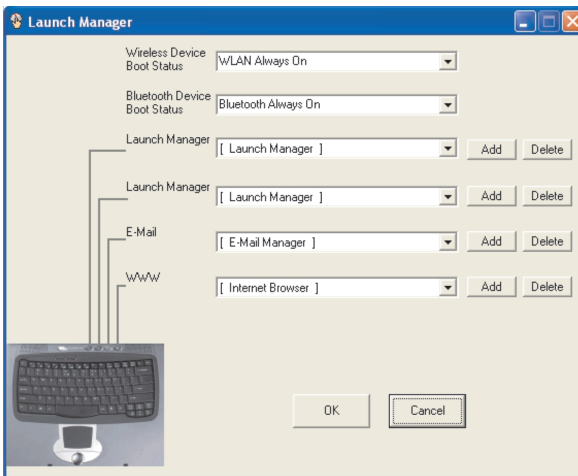


Launch Manager

Launch Manager allows you to set the four launch keys located above the keyboard. See “Launch Keys” on page 18 for the location of the launch key.

You can access the Launch Manager by clicking on Start, All Programs, and then Launch Manager to start the application.

You can manually switch off the 802.11b/802.11a+b wireless LAN and the Bluetooth wireless PAN by pressing the  wireless button.



BIOS Utility

The BIOS Utility is a hardware configuration program built into your computer's BIOS (Basic Input/Output System).

Your computer is already properly configured and optimized, and you do not need to run this utility. However, if you encounter configuration problems, you may need to run it.

To activate the BIOS Utility, press **F2** during the **POST** (power-on self-test) while the TravelMate logo is being displayed.

PhoenixBIOS Setup Utility				
Info.	Main	Advanced	Security	Boot Exit
				Item specific Help
CPU Type	Intel (R) Pentium (R) 4 CPU			
CPU Speed	2.53 GHz			
Floppy Drive:				
IDE1 Model Name				
IDE1 Serial Number				
IDE2 Model Name				
IDE2 Serial Number				
System BIOS Ver:	xxx			
VGA BIOS Ver:				
KBC Ver:	xxx			
Serial Num:	xxxxxxxxxxxxxxxxxxxx	22 Byte		
Asset Tag Number:	xxxxxxxxxxxxxxxxxxxx	32 Byte		
Product Name:	TravelMate 430	16 Byte		
Manufacturer Name:	Acer	16 Byte		
UUID:	xxxxxxxxxxxxxxxx	16 Byte		
F1 Help	↑↓ Select Item	F5/F6 Change Values	F9 Setup defaults	
Esc Exit	←→ Select Menu	Enter Select	▶ Sub-Menu	F10 Save and Exit

Move the cursor key to **Advanced** to prompt the following screen for setting Hyperthreading Technology.

PhoenixBIOS Setup Utility				
Info.	Main	Advanced	Security	Boot Exit
				Item specific Help
Internal TouchPad:	[Both]			
Infrared Port(FIR) :	[Disabled]			
Parallel Port:	[Enabled]			
Mode:	[ECP]			
Base I/O address:	[378h]			
Interrupt	[IRQ7]			
DMA channel:	[DMA3]			
Hyperthreading Technology	[Disabled]			
System Boot from HDD Recovery	[Disabled]			
F1 Help	↑↓ Select Item	F5/F6 Change Values	F9 Setup defaults	
Esc Exit	←→ Select Menu	Enter Select	▶ Sub-Menu	F10 Save and Exit



Note: Hyperthreading Technology is enabled in CPU with 3.06GHz and up.

3 Troubleshooting my computer

This chapter instructs you on how to deal with common system problems. Read it before calling a technician if a problem occurs. Solutions to more serious problems require opening up the computer. Do not attempt to open the computer by yourself. Contact your dealer or an authorized service center for assistance.

key link: www.acersupport.com

Frequently-asked questions

The following is a list of possible situations that may arise during the use of your computer. Easy answers and solutions are provided for each one.

I opened the display and pressed the power button, but computer does not start or boot-up.

Look at the Power indicator:

- If it is not lit, no power is being applied to the computer. Check the following:
 - If you are running on battery power, it may be low and unable to power the computer. Connect the AC adapter to recharge the battery pack.
 - Make sure that the AC adapter is plugged in properly to the computer and to the power outlet.
- If it is lit, check the following:
 - The operating system files may be damaged or missing. Insert the bootable Acer System CD into the optical drive to restart the system. This will diagnose your system and make necessary fixes.

Nothing appears on the screen.

The computer's power management system automatically blanks the screen to save power. Press any key to turn the display back on.

If pressing a key does not turn the display back on, two things might be the cause:

- The brightness level might be too low. Press **Fn**→ (increase) and **Fn**← (decrease) to adjust the brightness to higher.
- The display device might be set to an external monitor. Press the display toggle hot key **Fn-F5** to toggle the display back to the computer.

Image is not full-screen.

The computer display has a native resolution of 1024 x 768 (XGA) for the 14.1"/15.0" or 1400 x 1050 (SXGA+) for the 15.0"(selected models

only). If you set the resolution lower than this, the screen expands to fill the computer display.

Right-click on your Windows desktop and select Properties to bring up the **Display Properties** dialog box. Then click on the Settings tab to make sure that the resolution is set to the appropriate resolution. Resolutions lower than the specified resolution may not be full-screen on the computer or on an external monitor.

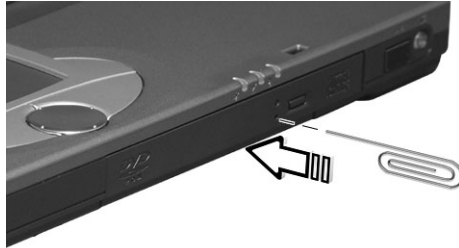
No audio is heard from the computer.

Check the following:

- The volume may be muted. In Windows, look at the volume control (speaker) icon on the taskbar. If it is crossed-out, click on the icon and deselect the Mute option.
- The speakers may be turned off. Press **Fn-F8** to turn the speakers on (this hot key also turns the speakers off).
- The volume level may be too low. In Windows, look at the volume control icon on the taskbar. See "Hot keys" on page 15 for more detail.
- If headphones, earphones or external speakers are connected to the line-out port on the computer's right panel, the internal speakers automatically turn off.

I want to eject the optical drive tray without turning on the power. I cannot eject the optical drive tray.

There is a mechanical eject button on the optical drive. Simply insert the tip of a pen or paperclip and push to eject the tray.



The keyboard does not respond.

Try attaching an external keyboard to the USB port of the computer. If it works, contact your dealer or an authorized service center as the internal keyboard cable may be loose.

The printer does not work.

Check the following:

- Make sure that the printer is connected to a power outlet and that it is turned on.
- Make sure that the printer cable is connected securely to the computer's parallel port and the corresponding port on the printer.
- During POST, press **F2** to access the BIOS Utility and verify that the parallel port is enabled.

I want to set up my location to use the internal modem.

To properly use your communications software (e.g., HyperTerminal), you need to set up your location: (for Windows XP)

- 1 Click on **Start, Control Panel**.
- 2 Double-click on **Phone and Modem**.
- 3 Click on **Dialing Rules** and begin setting up your location.

Refer to the Windows manual.

Requesting service

International Traveler's Warranty (ITW)

Your computer is backed by an International Traveler's Warranty (ITW) that gives you security and peace of mind when traveling. Our worldwide network of service centers are there to give you a helping hand.

An ITW passport comes with your computer. This passport contains all you need to know about the ITW program. A list of available, authorized service centers is in this handy booklet. Read this passport thoroughly.

Always have your ITW passport on hand, especially when you travel to receive the benefits from our support centers. Place your proof-of-purchase in the flap located inside the front cover of the ITW passport.

If the country you are traveling in does not have an Acer-authorized ITW service site, you can still get in contact with our offices worldwide.

There are two ways to access Acer for technical support and information:

- Internet service worldwide (www.acersupport.com)
- Technical support numbers in various countries

You can view a list of technical support numbers by following these steps: (for Windows XP)

- 1 Click on **Start**.
- 2 Click on **Help and Support**.
- 3 Click on **Contact Acer**.

You can also check Acer worldwide service centers by following these steps:

- 1 Click on **Start**.
- 2 Right click on My Computer, choose **Properties**.
- 3 Click **Support Information** for more information about Acer worldwide service centers.

Before you call

Please have the following information available when you call Acer for online service, and please be at your computer when you call. With your support, we can reduce the amount of time a call takes and help solve your problems efficiently.

If there are error messages or beeps reported by your computer, write them down as they appear on the screen (or the number and sequence in the case of beeps).

You are required to provide the following information:

Name: _____

Address: _____

Telephone number: _____

Machine and model type: _____

Serial number: _____

Date of purchase: _____

Appendix A
Specifications

This appendix lists the general specifications of your computer.

Microprocessor

- Intel® Desktop P4P CPU with packing mPGA 478 package, 533 MHz FSB (front side bus)
- Main memory expandable to 2 GB, dual 200-pin soDIMM sockets
- DDR 266 (PC2100) DDR-SDRAM (Double Data Rate-Synchronous Dynamic Random Access Memory) support
- 512 KB Flash ROM BIOS

Data storage

- One high-capacity, Enhanced-IDE hard disk
- One 5.25-inch internal optical drive

Display and video

- Thin-Film Transistor (TFT) liquid crystal display (LCD) displaying 32-bit true color up to 1024 x 786 eXtended Graphics Array (XGA) resolution for 14.1"/15.0" or 1400 x 1050 Super eXtended Graphics Array+ (SXGA+) resolution for 15.0"
- ATi Radeon 7500 video chip, with 32/64 MB dedicated DDR video memory
- 4X AGP bus with 3D acceleration
- Simultaneous LCD and CRT display support
- Dual display capability
- S-video for output to a television or display device that supports S-video input (NTSC/PAL)
- "Automatic LCD dim" feature that automatically decides the best settings for your display and conserves power

Audio

- 18-bit AC'97 stereo audio
- Dual speakers and microphone
- Audio ports for microphone/line-in and headphone/speaker/line-out
- Audio DJ console for audio CD playback when the computer is off

Keyboard and pointing device

- 84-/85-/88-key Windows keyboard

- Ergonomically-centered touchpad pointing device with 4-way scroll button

I/O ports

- One type II CardBus PC Card slots
- One RJ-45 jack (Ethernet 10/100)
- One RJ-11 jack (V.90/56Kbps)
- One DC-in jack
- One parallel port (ECP/EPP)
- One external monitor port
- One headphone/speaker/line-out jack (3.5mm mini jack)
- One microphone/line-in jack (3.5mm mini jack)
- Three USB ports
- One IEEE 1394 port
- One S-video TV-out (NTSC/PAL) port
- 100-pin port replicator connector for Acer EasyPort
- One SD/MMC slot
- One memory stick slot

Weight and dimensions

- 327(W) x 269(D) x 35.9(F) x 39.9(R)mm; (12.9" x 10.6" x 1.4") for 14.1"/15.0" LCD
- 2.99 kg (6.6 lbs) for 14.1" LCD model / 3.11kg (6.8 lbs) for 15.0" LCD model

Environment

- Temperature
 - Operating: 5°C ~ 35°C
 - Non-operating: -20°C ~ 65°C
- Humidity (non-condensing)
 - Operating: 20% ~ 80% RH
 - Non-operating: 20% ~ 80% RH

System

- ACPI support
- DMI 2.0-compliant
- Microsoft Windows operating system

Power

- Battery pack
 - 70Wh Li-Ion battery pack
 - 3~3.5-hour rapid charge/4.5-hour charge-in-use
- AC adapter
 - 90-Watt
 - Auto sensing 100~240Vac, 50~60Hz

Options

- 256/512-MB memory upgrade modules (1024 MB will be available in the future)
- Additional Li-Ion battery pack
- Additional AC adapter
- Bay floppy disc drive, DVD drive and DVD/CD-RW combo drive
- Acer EasyPort
- USB FDD(Bootable)
- 2nd HDD(Bootable)

Appendix B
Notices

This appendix lists the general notices of your computer.

FCC notice

This device has been tested and found to comply with the limits for a Class B digital device pursuant to Part 15 of the FCC Rules. These limits are designed to provide reasonable protection against harmful interference in a residential installation. This device generates, uses, and can radiate radio frequency energy and, if not installed and used in accordance with the instructions, may cause harmful interference to radio communications.

However, there is no guarantee that interference will not occur in a particular installation. If this device does cause harmful interference to radio or television reception, which can be determined by turning the device off and on, the user is encouraged to try to correct the interference by one or more of the following measures:

- Reorient or relocate the receiving antenna
- Increase the separation between the device and receiver
- Connect the device into an outlet on a circuit different from that to which the receiver is connected
- Consult the dealer or an experienced radio/television technician for help

Notice: Shielded cables

All connections to other computing devices must be made using shielded cables to maintain compliance with FCC regulations.

Notice: Peripheral devices

Only peripherals (input/output devices, terminals, printers, etc.) certified to comply with the Class B limits may be attached to this equipment. Operation with non-certified peripherals is likely to result in interference to radio and TV reception.

Caution

Changes or modifications not expressly approved by the manufacturer could void the user's authority, which is granted by the Federal Communications Commission, to operate this computer.

Use conditions

This part complies with Part 15 of the FCC Rules. Operation is subject to the following two conditions: (1) this device may not cause harmful interference, and (2) this device must accept any interference received, including interference that may cause undesired operation.

Notice: Canadian users

This Class B digital apparatus meets all requirements of the Canadian Interference-Causing Equipment Regulations.

Remarque à l'intention des utilisateurs canadiens

Cet appareil numérique de la classe B respecte toutes les exigences du Règlement sur le matériel brouilleur du Canada.

Modem notices

FCC

This equipment complies with Part 68 of the FCC rules. Located on the bottom side of the modem is a label that contains, among other information, the FCC Registration Number and Ringer Equivalence Number (REN) for this equipment. Upon request, you must provide this information to your telephone company.

If your telephone equipment causes harm to the telephone network, the telephone company may discontinue your service temporarily. If possible, they will notify you in advance. But, if advance notice is not practical, you will be notified as soon as possible. You will also be informed of your right to file a complaint with the FCC.

Your telephone company may make changes in its facilities, equipment, operations, or procedures that could affect the proper functioning of your equipment. If they do, you will be notified in advance to give you an opportunity to maintain uninterrupted telephone service.

If this equipment should fail to operate properly, disconnect the equipment from the phone line to determine if it is causing the problem. If the problem is with the equipment, discontinue use and contact your dealer or vendor.

TBR 21

This equipment has been approved [Council Decision 98/482/EC - "TBR 21"] for pan-European single terminal connection to the Public Switched Telephone Network (PSTN). However, due to differences between the individual PSTNs provided in different countries, the approval does not, of itself, give an unconditional assurance of successful operation on every PSTN termination point. In the event of problems, you should contact your equipment supplier in the first instance.

Important safety instructions

Read these instructions carefully. Save these instructions for future reference.

- 1 Follow all warnings and instructions marked on the product.
- 2 Unplug this product from the wall outlet before cleaning. Do not use liquid cleaners or aerosol cleaners. Use a damp cloth for cleaning.
- 3 Do not use this product near water.
- 4 Do not place this product on an unstable cart, stand, or table. The product may fall, causing serious damage to the product.
- 5 Slots and openings in the cabinet and the back or bottom are provided for ventilation; to ensure reliable operation of the product and to protect it from overheating, these openings must not be blocked or covered. The openings should never be blocked by placing the product on a bed, sofa, rug, or other similar surface. This product should never be placed near or over a radiator or heat register, or in a built-in installation unless proper ventilation is provided.
- 6 This product should be operated from the type of power indicated on the marking label. If you are not sure of the type of power available, consult your dealer or local power company.
- 7 Do not allow anything to rest on the power cord. Do not locate this product where persons will walk on the cord.
- 8 If an extension cord is used with this product, make sure that the total ampere rating of the equipment plugged into the extension cord does not exceed the extension cord ampere rating. Also, make sure that the total rating of all products plugged into the wall outlet does not exceed the fuse rating.
- 9 Never push objects of any kind into this product through cabinet slots as they may touch dangerous voltage points or short out parts that could result in a fire or electric shock. Never spill liquid of any kind on the product.
- 10 Do not attempt to service this product yourself, as opening or removing covers may expose you to dangerous voltage points or other risks. Refer all servicing to qualified service personnel.
- 11 Unplug this product from the wall outlet and refer servicing to qualified service personnel under the following conditions:
 - a When the power cord or plug is damaged or frayed
 - b If liquid has been spilled into the product
 - c If the product has been exposed to rain or water
 - d If the product does not operate normally when the operating instructions are followed. Adjust only those controls that are covered by the operating instructions since improper adjustment of other controls may result in damage and will often require extensive work by a qualified technician to restore the product to normal condition.
 - e If the product has been dropped or the cabinet has been damaged

- f If the product exhibits a distinct change in performance, indicating a need for service.
- 12 Replace the battery with the same type as the product's battery we recommend. Use of another battery may present a risk of fire or explosion.
- 13 **Warning!** Batteries may explode if not handled properly. Do not disassemble or dispose of them in fire. Keep them away from children and dispose of used batteries promptly.
- 14 Use only the proper type of power supply cord set (provided in your accessories box) for this unit. It should be a detachable type: UL listed/CSA certified, type SPT-2, rated 7A 125V minimum, VDE approved or its equivalent. Maximum length is 15 feet (4.6 meters).

Laser compliance statement

The CD, DVD or DVD/CD-RW drive used with this computer is a laser product. The CD, DVD or DVD/CD-RW drive's classification label (shown below) is located on the drive.

CLASS 1 LASER PRODUCT

CAUTION: INVISIBLE LASER RADIATION WHEN OPEN. AVOID EXPOSURE TO BEAM.

APPAREIL A LASER DE CLASSE 1 PRODUIT

LASERATTENTION: RADIATION DU FAISCEAU LASER INVISIBLE EN CAS D'OUVERTURE. EVITER TOUTE EXPOSITION AUX RAYONS.

LUOKAN 1 LASERLAITE LASER KLASSE 1

VORSICHT: UNSICHTBARE LASERSTRAHLUNG, WENN ABDECKUNG GEÖFFNET NICHT DEM STRAHL AUSSETZEN

PRODUCTO LÁSER DE LA CLASE I

ADVERTENCIA: RADIACIÓN LÁSER INVISIBLE AL SER ABIERTO. EVITE EXPONERSE A LOS RAYOS.

ADVARSEL: LASERSTRÅLING VEDÅBNING SE IKKE IND I STRÅLEN.

VARO! LAVATTAESSA OLET ALTTINA LASERSÄTEILYLLE.

VARNING: LASERSTRÅLNING NÅR DENNA DEL ÅR ÖPPNAD ÅLÅ TUIJOTA SÄTTEESEENSTIRRA EJ IN I STRÅLEN

VARNING: LASERSTRÅLNING NAR DENNA DEL ÅR ÖPPNADSTIRRA EJ IN I STRÅLEN

ADVARSEL: LASERSTRÅLING NAR DEKSEL ÅPNESSTIRR IKKE INN I STRÅLEN

Lithium battery statement

CAUTION

Danger of explosion if battery is incorrectly replaced. Replace only with the

same or equivalent type recommended by the manufacturer. Dispose of used batteries according to local regulations. Recycle if at all possible.

ADVARSEL!

Lithiumbatteri - Eksplosjonsfare ved feilagtig håndtering. Udsiftingning må kun ske med batteri af samme fabrikat og type. Léver det brugte batteri tilbage til leverandøren.

ADVARSEL

Eksplosjonsfare ved feilaktig skifte av batteri. Benytt samme batteritype eller en tilsvarende type anbefalt av apparatfabrikanten. Brukte batterier kasseres i henhold til fabrikantens instruksjoner.

VARNING

Explosionsfara vid felaktigt batteribyte. Använd samma batterityp eller en ekvivalent typ som rekommenderas av apparattillverkaren. Kassera använt batteri enligt fabrikantens instruktion.

VAROITUS

Päristo voi räjähtää, jos se on virheellisesti asennettu. Vaihda paristo ainoastaan laitevalmistajan suosittelemaan tyyppiin. Hävitä käytetty paristo valmistajan ohjeiden mukaisesti.

VORSICHT!

Explosionsgefahr bei unsachgemäßen Austausch der Batterie Ersatz nur durch denselben oder einem vom Hersteller empfohlenem ähnlichen Typ. Entsorgung gebrauchter Batterien nach Angaben des Herstellers.

LCD pixel statement

The LCD unit is produced with high-precision manufacturing techniques. Nevertheless, some pixels may occasionally misfire or appear as black or colored dots. This has no effect on the recorded image and does not constitute a malfunction.

Macrovision copyright protection notice

This product incorporates copyright protection technology that is protected by method claims of certain U.S. patents and other intellectual property rights owned by Macrovision Corporation and other rights owners. Use of this copyright protection technology must be authorized by Macrovision Corporation, and is intended for home and other limited viewing uses only unless otherwise authorized by Macrovision Corporation. Reverse engineering or disassembly is prohibited.

Apparatus Claims of U.S. Patent Nos. 4,631,603, 4,577,216, 4,819,098, and 4,907,093 licensed for limited viewing uses only.

A-Tick notice

For safety reasons, only connect headsets with a telecommunications compliance label. This includes customer equipment previously labelled permitted or certified.

The unit shall be connected to Telecommunication Network through a line cord which meets the requirements of ACA Technical Standard TS008.

Australian approved mains cord set shall be used with the equipment.

Index

A

- AC adapter
 - caring for v
- AcerMedia drive 22
- audio 24
 - adjusting the volume 24
 - troubleshooting 50

B

- battery pack
 - caring for v
 - charging indicator 11
- BIOS utility 44
- brightness
 - hotkeys 16

C

- caps lock 12
 - on indicator 11
- care
 - AC adapter v
 - battery pack v
 - computer iv
- CD-ROM
 - ejecting 22
 - ejecting manually 51
 - troubleshooting 51
- cleaning
 - computer v
- computer
 - bringing to meetings 28
 - caring for iv
 - cleaning v
 - disconnecting 27
 - features 3, 9
 - indicators 11
 - keyboards 12
 - moving around 27
 - on indicator 11
 - performance 9
 - security 32
 - setting up a home office 29
 - taking home 28
 - traveling internationally 30

- traveling on local trips 30
- troubleshooting 48
- turning off iv
- Wireless Communication indicator 11

- connections
 - network 38

D

- display
 - hotkeys 16
 - troubleshooting 49
- DVD 23
- DVD movies
 - playing 23

E

- email checking function 19
- Euro 17

F

- FAQ. See frequently-asked questions
- frequently-asked questions 49
- front view 3

H

- hard disk 22
- help
 - online services 52
- Hibernation mode
 - hotkey 15
- hotkeys 15

I

- IEEE 1394 port 39
- indicator lights 11
- ITW. See warranty

K

- keyboard 12
 - embedded numeric keypad 13
 - hotkeys 15
 - lock keys 12
 - troubleshooting 51
 - Windows keys 14

L

- LEDs 11

M

- media access
 - on indicator 11
- memory
 - installing 42-??
 - upgrading 41
- modem 37

N

- network 38
- Notebook Manager 43
 - hotkey 15
- notice
 - DVD copyright protection 67
- num lock 12
 - on indicator 11
- numeric keypad
 - embedded 13
 - num lock 13

O

- online services 52
- options
 - memory upgrade 41

P

- password 32
 - types 32
- PC Card 39
 - ejecting 40
 - inserting 40
- ports 37
- POST (power-on self-test) 45
- printer
 - troubleshooting 51
- problems 49
 - CD-ROM 51
 - display 49
 - keyboard 51
 - printer 51
 - startup 49
 - troubleshooting 48

Q

- questions
 - setting location for modem use 51

S

- safety
 - CD-ROM 66
 - FCC notice 63
 - general instructions 64
 - modem notices 64
- scroll lock 12
- security
 - keylock 32
 - passwords 32
 - smart card 32
- service
 - when to call vi
- speakers
 - hotkey 16
 - troubleshooting 50
- specifications 56
- Standby mode
 - hotkey 15
- status indicators 11
- storage 22
 - AcerMedia drive 22
 - hard disk 22
- support
 - information 52

T

- touchpad 20
 - hotkey 16
 - using 20
- travel
 - international flights 30
 - local trips 30
- troubleshooting 48

U

- universal serial bus 38

V

- view
 - bottom 8
 - front 5
 - left 5
 - rear 7
 - right 6
- volume
 - adjusting 24

W

warranty

International Traveler's Warran-

ty 52

Windows keys 14

