

# User Manual

**Model Name: DNUA-E134A**  
(QCA AR9374X-AL3D  
2x2 802.11 abgn USB Module)

**Revision: 1**  
**Issue Date: 2013/5/2**



This document and the information contained herein is the property of Wistron NeWeb Corporation and reproduction by any means (including, but not limited to, xerographic, chemical, electronic) and distribution is expressly prohibited without prior written consent from Wistron NeWeb Corporation. The document and information contained herein are confidential and may not be divulged without express written consent from Wistron NeWeb Corporation, located at 20 Park Avenue II, Hsinchu Science Park, Hsinchu 308, Taiwan, R.O.C. Copyright 2010 by Wistron NeWeb Corporation / All rights reserved.

### Revision History

<b>Edition #</b>		<b>Reason for revision</b>	<b>Issue date</b>	<b>Author</b>
1.0	●	Initial Draft Document	2013/5/2	Louis Wu
	●			
	●			
	●			
	●			

## **FCC Statement:**

### **Federal Communication Commission Interference Statement**

This equipment has been tested and found to comply with the limits for a Class B digital device, pursuant to Part 15 of the FCC Rules. These limits are designed to provide reasonable protection against harmful interference in a residential installation. This equipment generates, uses and can radiate radio frequency energy and, if not installed and used in accordance with the instructions, may cause harmful interference to radio communications. However, there is no guarantee that interference will not occur in a particular installation. If this equipment does cause harmful interference to radio or television reception, which can be determined by turning the equipment off and on, the user is encouraged to try to correct the interference by one of the following measures:

- Reorient or relocate the receiving antenna.
- Increase the separation between the equipment and receiver.
- Connect the equipment into an outlet on a circuit different from that to which the receiver is connected.
- Consult the dealer or an experienced radio/TV technician for help.

This device complies with Part 15 of the FCC Rules. Operation is subject to the following two conditions: (1) This device may not cause harmful interference, and (2) this device must accept any interference received, including interference that may cause undesired operation.

**For product available in the USA/Canada market, only channel 1~11 can be operated. Selection of other channels is not possible.**

This device and its antennas(s) must not be co-located or operating in conjunction with any other antenna or transmitter except in accordance with FCC multi-transmitter product procedures.

This device is going to be operated in 5.15~5.25GHz frequency range, it is restricted in indoor environment only.

Devices will not permit operations on channels 120-132 for 11a and 11n/a which overlap the 5600 - 5650 MHz band.

**IMPORTANT NOTE:**

This module is intended for OEM integrator. The OEM integrator is responsible for the compliance to all the rules that apply to the product into which this certified RF module is integrated.

Additional testing and certification may be necessary when multiple modules are used.

20cm minimum distance has to be able to be maintained between the antenna and the users for the host this module is integrated into. Under such configuration, the FCC radiation exposure limits set forth for an population/uncontrolled environment can be satisfied.

Any changes or modifications not expressly approved by the manufacturer could void the user's authority to operate this equipment.

**USERS MANUAL OF THE END PRODUCT:**

In the users manual of the end product, the end user has to be informed to keep at least 20cm separation with the antenna while this end product is installed and operated. The end user has to be informed that the FCC radio-frequency exposure guidelines for an uncontrolled environment can be satisfied. The end user has to also be informed that any changes or modifications not expressly approved by the manufacturer could void the user's authority to operate this equipment. If the size of the end product is smaller than 8x10cm, then additional FCC part 15.19 statement is required to be available in the users manual: This device complies with Part 15 of FCC rules. Operation is subject to the following two conditions: (1) this device may not cause harmful interference and (2) this device must accept any interference received, including interference that may cause undesired operation.

**LABEL OF THE END PRODUCT:**

The final end product must be labeled in a visible area with the following " Contains TX FCC ID: NKR-DNUAE134A ". If the size of the end product is larger than 8x10cm, then the following FCC part 15.19 statement has to also be available on the label: This device complies with Part 15 of FCC rules. Operation is subject to the following two conditions: (1) this device may not cause harmful interference and (2) this device must accept any interference received, including interference that may cause undesired operation.

## 1. General Description

The DNUA-E134A module is 802.11 a/b/g/n sign-chip solutions for USB dongle. It's very small and cost-effective modules which can bundle with PCs, TVs, set-top boxes, personal video recorders and other devices to a WiFi network.

## 2. Usage

Thank you for purchasing the WLAN a/b/g/n USB2.0 Adapter that provides the easiest way to wireless networking. This User Manual contains detailed instructions in the operation of this product. Please keep this manual for future reference.

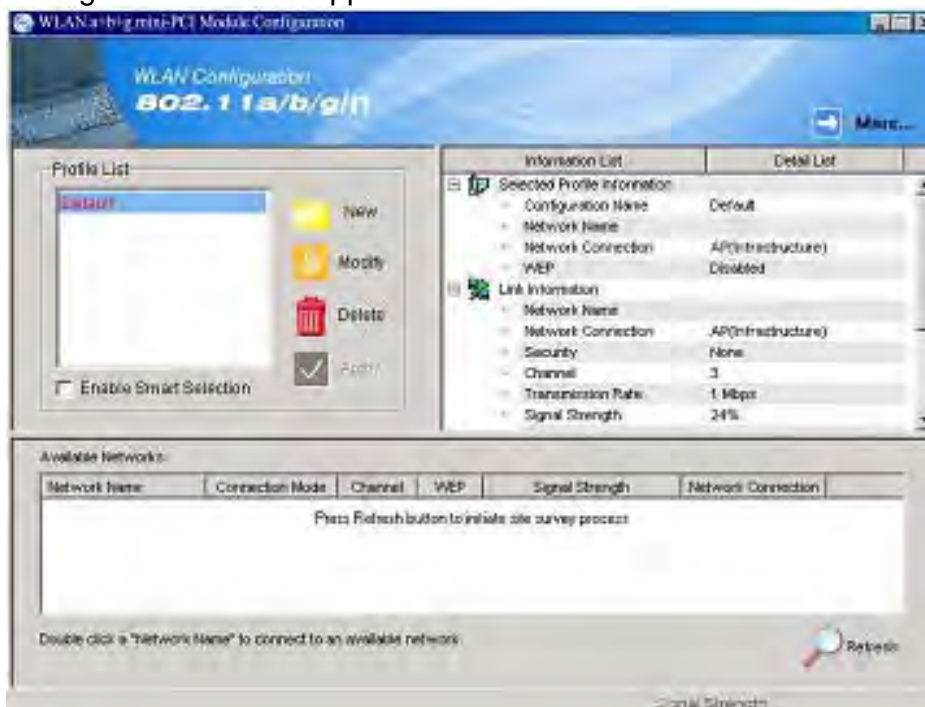
### System Requirements

- A laptop PC contains:
  - 32 MB memory or greater
  - 300 MHz processor or higher
- Microsoft® Win™ 2000/ME/98 Second Edition/XP

### 3. Driver/Utility Installation / Uninstallation

#### 3. Connecting to an Existing Network

1. Double click the shortcut icon of WLAN a+b+g+n USB2.0 Adapter on the desktop, and the Configuration window appears.

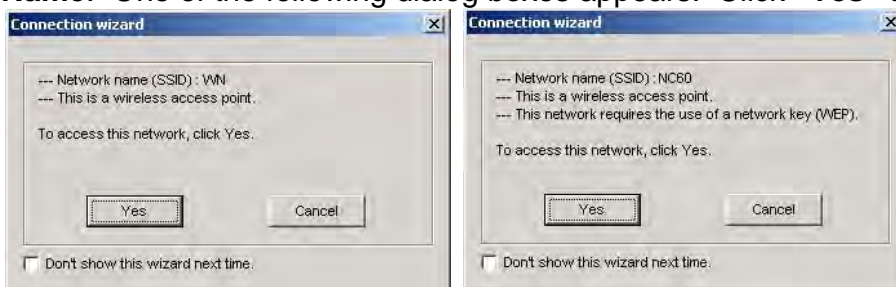


2. Click on the **Refresh** button  to list all available networks.

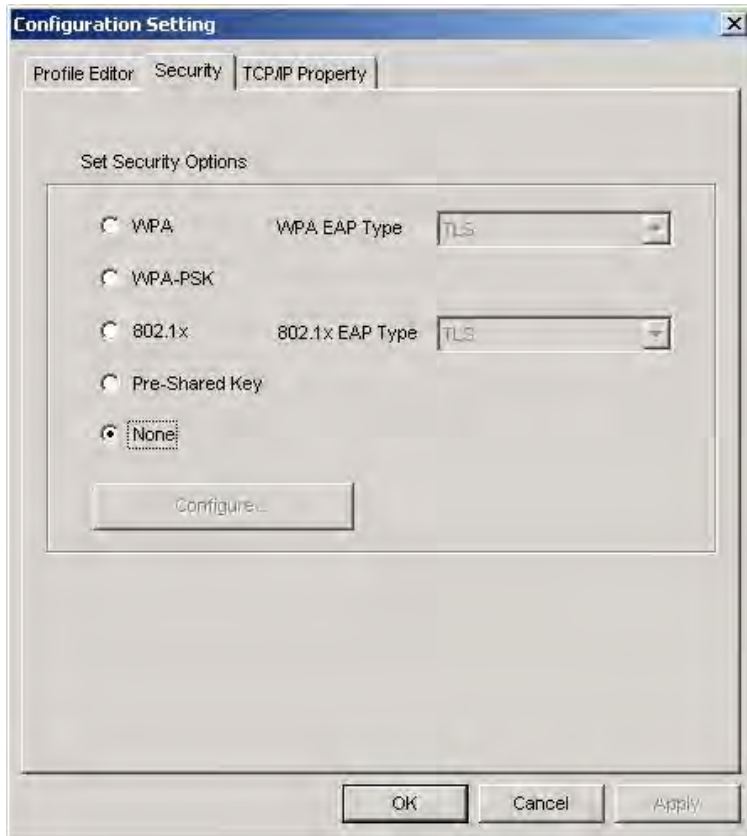


**Note!** To automatically connect to the network with the strongest signal, select **Enable Smart Selection**. Any displays in Profile List.

3. From the list of "Available Networks", choose one network by double clicking the **Network Name**. One of the following dialog boxes appears. Click "**Yes**" to continue.

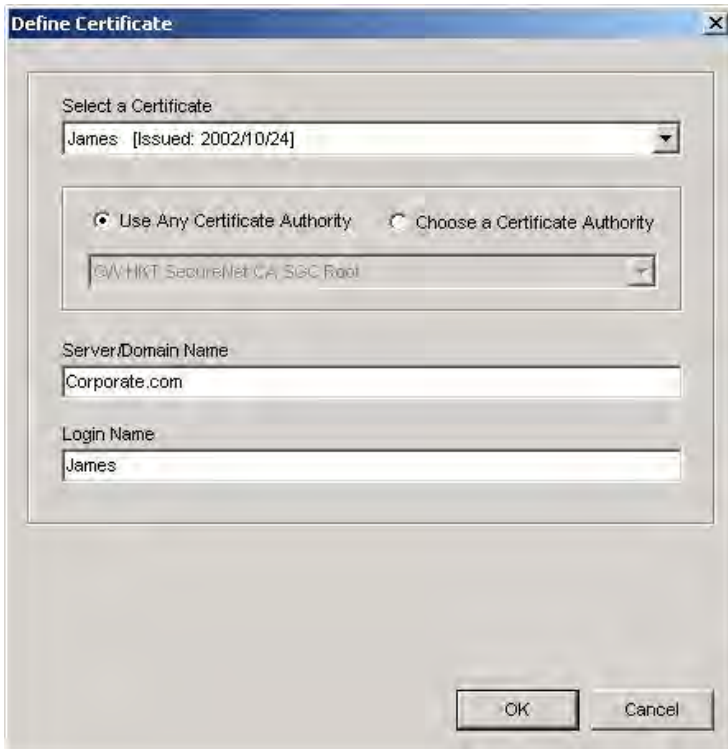


4. If the chosen network has security enabled, the **Security** tab displays. Select the security option used by the network. Contact the network administrator for the correct settings.

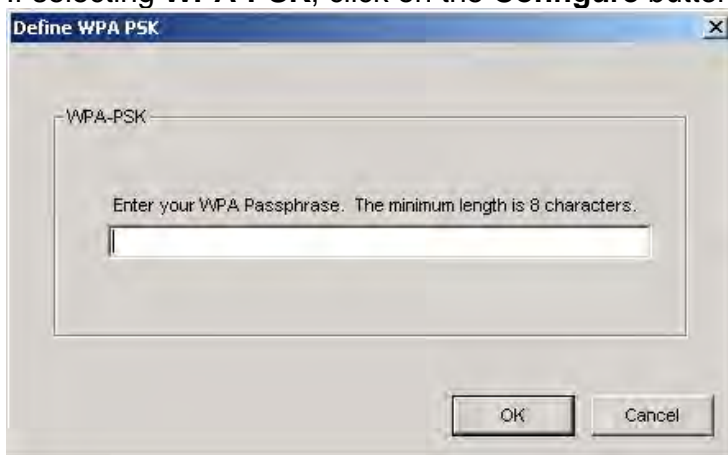


5. If selecting **WPA** or **802.1X**, select the EAP type, then click on the **Configure** button to select the certificate.





6. If selecting **WPA-PSK**, click on the **Configure** button to enter the PassPhrase.



7. If selecting **Pre-Shared Key**, click on the **Configure** button to enter the correct Encryption Keys.

Key entry method:

a. 10 hex digits: User must enter 10 hexadecimal digits.

The hexadecimal define is "0-9" and "A-F".

ex: 123456abc

b. 5 chars: User must enter 5 characters. ex: ab3#@

c. 13 chars: User must enter 13 characters.

ex: ab3#@kf08&kdk

d. 16 chars: User must enter 16 characters.

ex: ab3#@kf08&kdk456

For WEP key, please contact with MIS administrator.

Define Pre-Shared Keys

Default Encryption Key: [Dropdown]

Encryption Keys (Hex 0-9 A-F)

Key Length: 64 (40+24) 10 hex digits

Unique Key: [Text Field] 64 (40+24) 10 hex digits

Shared

First: [Text Field] 64 (40+24) 10 hex digits




Second: [Text Field] 64 (40+24) 10 hex digits

Third: [Text Field] 64 (40+24) 10 hex digits

Fourth: [Text Field] 64 (40+24) 10 hex digits

First Key: Column 1, Length 0

OK Cancel

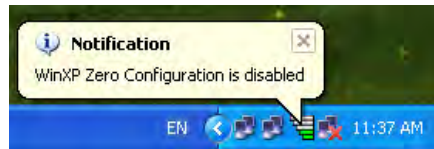
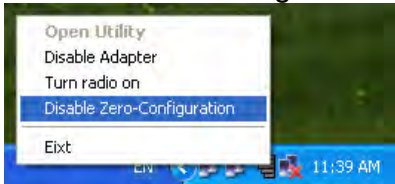
8. Click on **OK** (or **Apply** if using the other tabs) when done to save the settings.
9. Once connected (the icon  or  in front of the name of the Connected Network), you can check the signal strength from the icon  in the Windows System Tray.

## Additional Note for Windows XP

In Windows XP, it is recommended that you use the WLAN a+b+g+n USB2.0 Adapter Configuration Utility. Before using the Utility, please follow the steps below to disable the Windows XP Zero Configuration:

### Option 1:

1. Double click the shortcut icon to open the Utility.
2. From the Windows System Tray, you should see the signal icon. Right-click it and select "Disable Zero-Configuration".



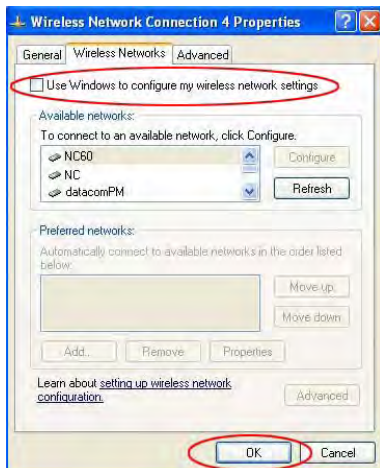
### Option 2:

Go to "Control Panel" and double click "Network Connections".

Right-click "Wireless Network Connection" of "WLAN a+b+g USB2.0 Adapter", and select "Properties".



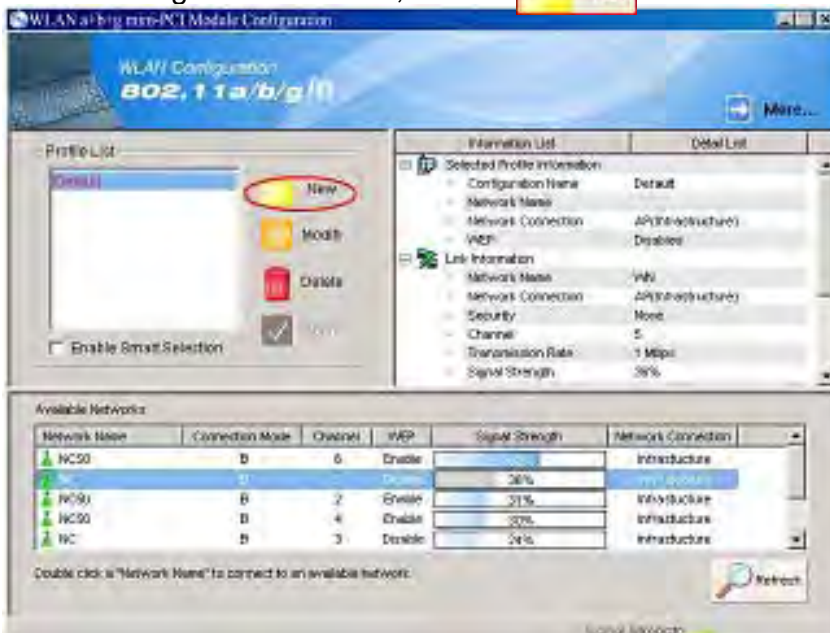
Select "Wireless Networks" tab, and uncheck the check box of "Use Windows to configure my wireless network settings", and then click "OK".



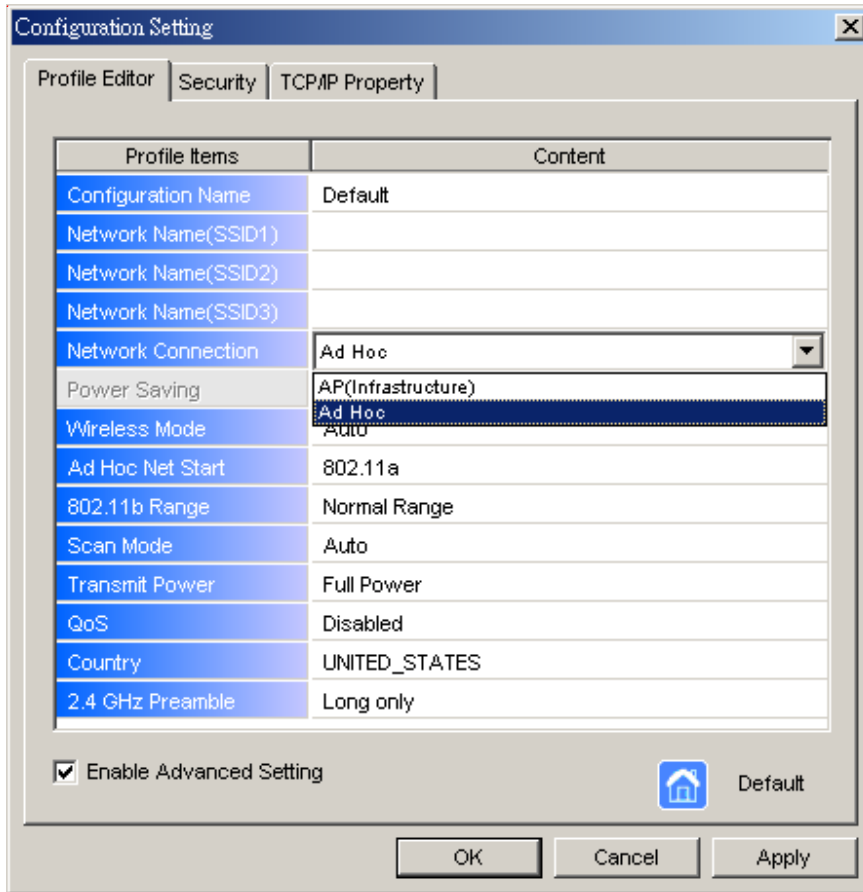
#### 4. Creating an Ad Hoc New Network

**NOTE!** Ad-hoc mode is available only for 802.11b/g. It is not available for 802.11a. This is a client product and do not have radar detection function specified by FCC. The software will not let you to use ad-hoc under 802.11a.

1. In the Configuration window, click **New**.



2. Select the "Profile Editor" tab.



3. Choose the check box of **Enable Advanced Setting** to edit all settings.
4. If joining or creating an Ad-Hoc network, choose **Ad Hoc**.
5. Click **OK** (or **Apply** if using the other tabs) to save the settings.  
For details of each setting, refer to [Modifying a Wireless Network on page 20](#).
6. Click the **Security** tab. If not using security, select **None**.



7. If security is used, select **Pre-Shared Key** and click on the **Configure** button.

8. Enter an encryption key in the **Shared: First** field.

Define Pre-Shared Keys

Default Encryption Key: [Dropdown]

Encryption Keys (Hex 0-9 A-F)

Key Length: [Dropdown]

Unique Key: [Text] [64 (40+24) 10 hex digits]

Shared

First: [Text] [64 (40+24) 10 hex digits]

Second: [Text] [64 (40+24) 10 hex digits]

Third: [Text] [64 (40+24) 10 hex digits]

Fourth: [Text] [64 (40+24) 10 hex digits]

First Key: Column 1, Length 0

OK Cancel

9. Click **OK** (or **Apply** if using the other tabs) to save the settings. The new **Network Name** is listed in the **Profile List**.
- The driver does not allow channel selection in Ad-Hoc mode. Instead, the driver starts with an initial channel then checks channel status. If the channel is busy, the driver automatically uses a different channel.

For details of each setting, please see chapter 5.

## 5. Modifying a Wireless Network

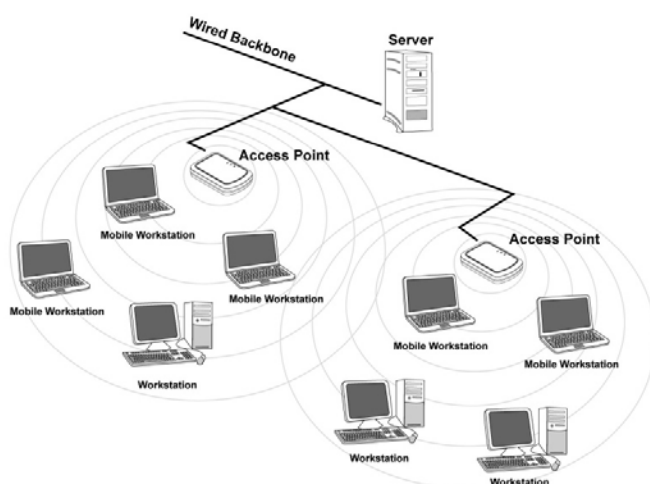
### 5.1 Infrastructure Mode and Ad Hoc Mode

You can set the Wireless Network Adapter to work in either **Infrastructure mode** or **Ad Hoc mode**.

**NOTE!** Ad-hoc mode is available only for 802.11b/g. It is not available for 802.11a. This is a client product and do not have radar detection function specified by FCC. The software will not let you to use ad-hoc under 802.11a.

#### Infrastructure Mode

In infrastructure mode, devices communicate with each other by first going through an Access Point (AP). Wireless devices can communicate with each other or can communicate with a wired network. When one AP is connected to wired network and a set of wireless stations, it is referred to as a BSS (Basic Service Set).



#### Ad Hoc Mode

Ad-hoc mode is also called "peer-to-peer mode" or "Independent Basic Service Set (IBSS)". In ad hoc mode, devices communicate directly with each other without using an Access Point (AP).

**NOTE!** Ad-hoc mode is available only for 802.11b/g. It is not available for 802.11a. This is a client product and do not have radar detection function specified by FCC. The software will not let you to use ad-hoc under 802.11a.



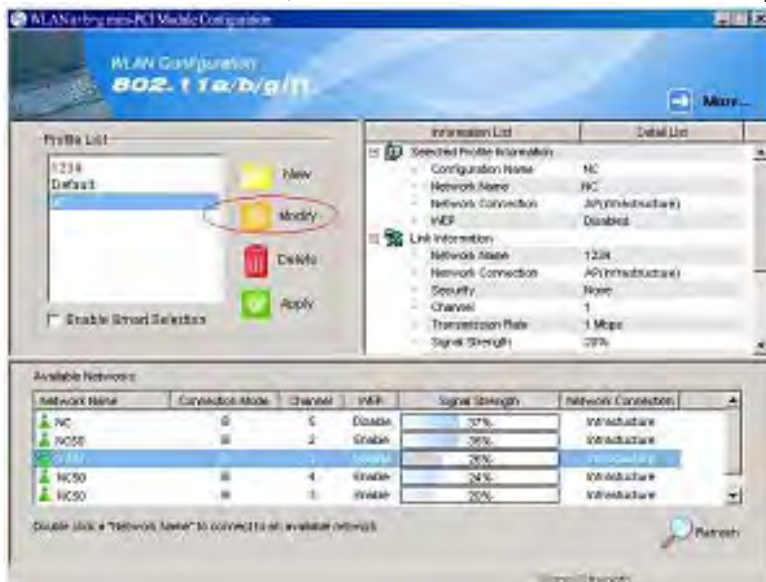


## 5.2 Modifying a Wireless Network

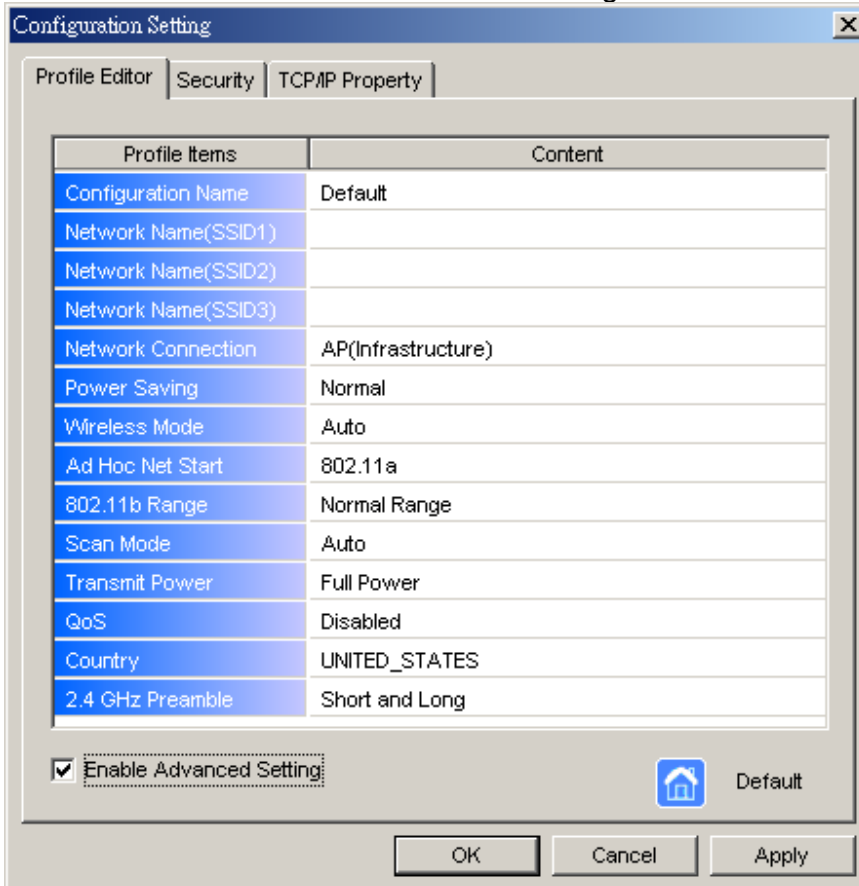
1. Open “WLAN a+b+g USB2.0 Adapter Configuration” by double clicking the shortcut icon on the desktop.

**Note!** If there’s no network name listed in the “Profile List”, click **Refresh** button and double click a Network Name from **Available Networks**. The chosen Network Name is listed in the Profile List.

2. From the Profile List, select one Profile and click **Modify** button .



3. Select **Profile Editor** tab and edit the settings. Click **OK** to save the modifications.



- **Configuration Name:** This name identifies the configuration. This name should be unique.
- **Network Name (SSID1) (SSID2) (SSID3):** The name of the wireless network. This name cannot be longer than 32 characters. If the field is set to be "ANY" or is left blank, your computer will connect to an AP with the best signal strength.
- **Network Connection:** Specifies the mode of the network. Two options are "Infrastructure" and "Ad Hoc".
- **Power Saving:** Minimizes power consumption while maintaining network connectivity and high data transfer performance. In **Ad Hoc** mode, **Power Savings** function cannot be enabled. The power management options are:
  - **Off:** PC Card is powered up at all times.
  - **Normal:** PC Card sleeps less often and stays asleep for a shorter period.
  - **Maximum:** PC Card sleeps more frequently and stays asleep as much as possible.
- **Wireless Mode:** Three options are "802.11b", "802.11a", "802.11g", "Super A", "Super G" or "Auto". "Auto" allows the use of either 802.11a, 802.11g or 802.11b mode.

**NOTE!** Ad-hoc mode is available only for 802.11b/g. It is not available for 802.11a. This is a client product and do not have radar detection function specified by FCC. The software will not let you to use ad-hoc under 802.11a.

- **Ad Hoc Net Start:** Specifies a band to establish an Ad Hoc network if no matching SSID is found. Options available are the following: 802.11b and 802.11g.  
**NOTE!** Ad-hoc mode is available only for 802.11b/g. It is not available for 802.11a. This is a client product and do not have radar detection function specified by FCC. The software will not let you to use ad-hoc under 802.11a.
- **802.11b Range:** Options are **Normal Range** and **Extended Range**. This function can let user to determine the transfer range in 802.11b mode. Extended Range can prolong the transfer range with a lower data transmitting rate.
- **Scan Mode:** Options are **Active Scan**, **Passive Scan** and **Auto**. In Active Scan, the driver sends out the probe request frames from each channel and collects the response frames from the responding. In Passive Scan, the driver scan each requested channel, listening the beacons on each channel.
- **Transmit Power:** This setting allows you to change the output power of the PC Card to increase or decrease the coverage area.
- **QoS:** Disables or enables the PC Card to cooperate in a network using QoS (Quality of Service).
- **2.4 GHz Preamble:** Allows Ad-Hoc compatibility with other 2.4 GHz devices. Two options are **Short and Long** and **Long only**. Use **Long Only** when configuring the client for an 802.11b RoamAbout AP wireless network.

4. Select **Security** tab and choose the security mode.

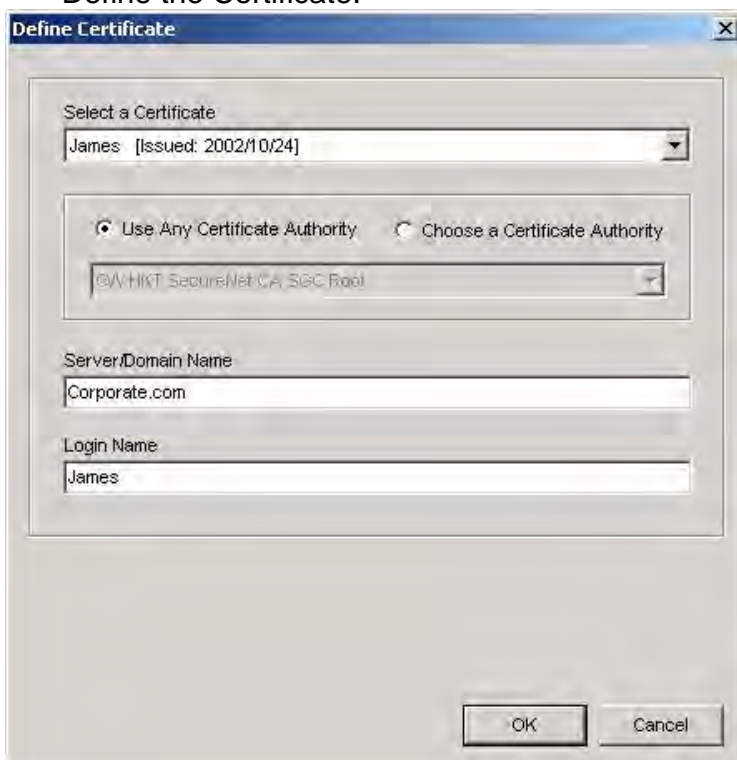
**Note!** Check with your Network Administrator for the security features supported by your AP.



- **WPA:** Enables the use of WiFi protected Access (WPA). This option requires IT administration.
  - a) Select **WPA** to open the WPA EAP drop-down menu. The options includes TLS and PEAP.
  - b) Click on the **Configure** button and complete the configuration information in the Define Certificate dialog.
- **WPA-PSK:** Enables the WPA-Pre Shared Key (PSK). Click on the **Configure** button and complete the configuration information in the WPA Passphrase dialog.
- **802.1x:** Enables 802.1x security. This option requires IT administration.
  - a) Select **802.1x** to open the 802.1x EAP drop-down menu. The options include TLS and PEAP.
  - b) Click on the **Configure** button and complete the configuration information in the Define Certificate dialog.

- **Pre-Shared Key:** Enables the use of pre-shared keys that are defined on the AP and the station.
  - a) Select the **Pre-Shared Key** radio button.
  - b) Click on the **Configure** button and complete the configuration information in the Define Certificate dialog.
- **None:** No security.

5. Define the Certificate.



- **Select a Certificate:** Select the Certificate to Authenticate to the RADIUS server from the drop-down menu.
- **Use any Certificate Authority:** The Default Setting. Select this radio button to use any Certificate Authority (CA) for authentication.
- **Choose a Certificate Authority:** Select this radio button to choose the desired Certificate Authority for authentication from the drop-down menu.
- **Server/Domain Name:** The the RADIUS server name or the domain name used for the network access.
- **Login Name:** The username used to log into the server or domain.
- **Define User Information (PEAP):** Click on the **Define User Information** button and complete the configuration information in the Define User Information dialog.

6. If selecting **WPA-PSK**, click on the **Configure** button to enter the PassPhrase. The

PassPhrase must be a minimum of 8 printable ASCII characters. The PassPhrase should be at least 20 characters to make it more difficult for an attacker to decipher the key.

7. If selecting **Pre-Shared Key**, click on the **Configure** button to enter the Encryption Keys. When finished, click **OK**. For WEP key, please contact with MIS administrator.

Define Pre-Shared Keys

Default Encryption Key: [Dropdown]

Encryption Keys (Hex 0-9 A-F)

Key Length [Dropdown]

Unique Key: [Text Field] [Key Length Dropdown]

Shared

First: [Text Field] [Key Length Dropdown]

Second: [Text Field] [Key Length Dropdown]

Third: [Text Field] [Key Length Dropdown]

Fourth: [Text Field] [Key Length Dropdown]

First Key: Column 1, Length 0

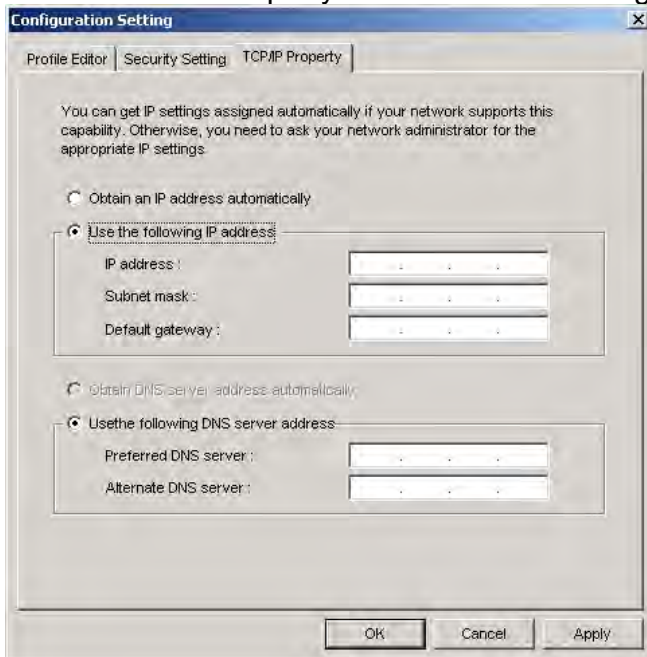
OK Cancel

- **Key Entry Method:** Determines the entry method for the key. Hexadecimal (0-9, A-F) or ASCII text (all keyboard characters).
- **Default Encryption Key:** Allows you to choose one encryption key (First, Second, Third, or Fourth) as the transmit key, which encrypts transmissions from the PC Card.
- **Unique Key:** Defines the per-session encryption key for the current network configuration. Not used in Ad-Hoc mode.
- **Shared Keys:** Use these fields to enter the wireless network's encryption keys. The keys must be in the correct position (First, Second, Third, or Fourth).
- **Key Length:** Defines the length of each encryption key.
  - o For 40/64 bit (enter 10 digits for hexadecimal or 5 characters for ASCII)
  - o For 104/128 bit (Enter 26 digits for hexadecimal or 13 characters for ASCII)

When the length is changed, the number of available characters in the field automatically changes. If a previously entered key is too long, the key is automatically

truncated to fit. If the key length is increased again, the key does not update to the previous value.

8. Click **OK** to save the settings.
9. Select “TCP/IP Property” tab. Enter the settings and click “OK” to save the settings.



- If the network uses DHCP server, choose **Obtain an IP address automatically**.
- If the network does not use DHCP server, choose **Use the following IP address** to set the relative settings. For the IP configuration information, please contact the network administrator.

**Appendix A: FAQ about WLAN**

1. Can I run an application from a remote computer over the wireless network?

This will depend on whether or not the application is designed to be used over a network. Consult the application's user guide to determine whether it supports operation over a network.

2. Can I play computer games with other members of the wireless network?

Yes, as long as the game supports multiple players over a LAN (local area network). Refer to the game's user guide for more information.

3. What is Spread Spectrum?

Spread Spectrum technology is a wideband radio frequency technique developed by the military for use in reliable, secure, mission-critical communications systems. It is designed to trade off bandwidth efficiency for reliability, integrity, and security. In other words, more bandwidth is consumed than in the case of narrowband transmission, but the trade-off produces a signal that is, in effect, louder and thus easier to detect, provided that the receiver knows the parameters of the spread-spectrum signal being broadcast. If a receiver is not tuned to the right frequency, a spread-spectrum signal looks like background noise. There are two main alternatives, Direct Sequence Spread Spectrum (DSSS) and Frequency Hopping Spread Spectrum (FHSS).

4. What is DSSS? What is FHSS? And what are their differences?

Frequency-Hopping Spread-Spectrum (FHSS) uses a narrowband carrier that changes frequency in a pattern that is known to both transmitter and receiver. Properly synchronized, the net effect is to maintain a single logical channel. To an unintended receiver, FHSS appears to be short-duration impulse noise. Direct-Sequence Spread-Spectrum (DSSS) generates a redundant bit pattern for each bit to be transmitted. This bit pattern is called a chip (or chipping code). The longer the chip, the greater the probability that the original data can be recovered. Even if one or more bits in the chip are damaged during transmission, statistical techniques embedded in the radio can recover the original data without the need for retransmission. To an unintended receiver, DSSS appears as low power wideband noise and is rejected (ignored) by most narrowband receivers.



5. Would the information be intercepted while transmitting on air?

WLAN features two-fold protection in security. On the hardware side, as with Direct Sequence Spread Spectrum technology, it has the inherent security feature of scrambling. On the software side, WLAN offers the encryption function (WEP) to enhance security and access control.

6. What is WEP?

WEP is Wired Equivalent Privacy, a data privacy mechanism based on a 64-bit or 128-bit shared key algorithm, as described in the IEEE 802.11 standard.

7. What is infrastructure mode?

When a wireless network is set to infrastructure mode, the wireless network is configured to communicate with a wired network through a wireless access point.

8. What is roaming?

Roaming is the ability of a portable computer user to communicate continuously while moving freely throughout an area greater than that covered by a single access point. Before using the roaming function, the workstation must make sure that it is the same channel number with the access point of dedicated coverage area.

To achieve true seamless connectivity, the wireless LAN must incorporate a number of different functions. Each node and access point, for example, must always acknowledge receipt of each message. Each node must maintain contact with the wireless network even when not actually transmitting data. Achieving these functions simultaneously requires a dynamic RF networking technology that links access points and nodes. In such a system, the user's end node undertakes a search for the best possible access to the system. First, it evaluates such factors as signal strength and quality, as well as the message load currently being carried by each access point and the distance of each access point to the wired backbone. Based on that information, the node next selects the right access point and registers its address. Communications between end node and host computer can then be transmitted up and down the backbone. As the user moves on, the end node's RF transmitter regularly checks the system to determine whether it is in touch with the original access point or whether it should seek a new one. When a node no longer receives acknowledgment from its original access point, it undertakes a new search. Upon finding a new access point, it then re-registers, and the communication process continues.