

UMC-LORA User Manual

The document contains proprietary information which is the property of **Wistron NeWeb Corporation** and is strictly confidential and shall not be disclosed to others in whole or in part, reproduced, copied, or used as basic for design, manufacturing or sale of apparatus without the written permission of **Wistron NeWeb Corporation**.

Subject: UMC-LORA User Manual

REV: 2.0

PAGE 2 OF 17

Revision History

Issue Date	Version	Description
2017/08/31	1.0	Initial Issued
2017/10/24	2.0	Updated according to reviewer
2017/10/31	3.0	Update OEM installation statement

Contents

1.	Introduction.....	4
2.	Test Setup Configuration	6
2.1	Power Supply and Debug Console Connection	6
2.2	RF Connection.....	9
2.3	Hardware Component Introduction	10
3.	Installation and Test Method.....	11
3.1	Attach UMC-LORA card onto SMCC.....	11
3.2	Install GDM7243 Driver	13
3.3	Confirm the GDM7243 device	13
3.4	Open the com port by PuTTY.....	14
3.5	Lora Test Command	16
4.	Test Equipment.....	17
5.	Antenna performance	17

1. Introduction

This User Manual of ISM module is to describe how to use the following sections for lab test by specific qualified engineers or technicians. Furthermore, this module is NOT intended for commercial use but designed as part of Smart Meter product which mainly provides ISM-900 access capabilities. For the procedure of SMCC installation into electric meter and the operation of SMCC in assembly factory, that information is described in assembly instruction document.

FCC ID Location

FCC ID is placed in manual instead of label area, for the reason that the device is too small to have FCC ID been properly placed on label area, because of over crowded identification of other product and regulatory information.

Model : UMC-LORA

P/N: 81.UMCLORA.G01

FCC ID: NKR-LMLORA

FCC Interference Statement

This module complies with Part 15 of the FCC Rules. Operation is subject to the following two conditions: (1) This module may not cause harmful interference and (2) this module must accept any interference received, including interference that may cause undesired operation.

FCC Statement for a Class B digital device or peripheral,

This equipment has been tested and found to comply with the limits for a Class B digital device, pursuant to part 15 of the FCC Rules. These limits are designed to provide reasonable protection against harmful interference in a residential installation. This equipment generates, uses and can radiate radio frequency energy and, if not installed and used in accordance with the instructions, may cause harmful interference to radio communications. However, there is no guarantee that interference will not occur in a particular installation. If this equipment does cause harmful interference to radio or

Subject: UMC-LORA User Manual

REV: 2.0

PAGE 5 OF 17

television reception, which can be determined by turning the equipment off and on, the user is encouraged to try to correct the interference by one or more of the following measures:

- Reorient or relocate the receiving antenna.
- Increase the separation between the equipment and receiver.
- Connect the equipment into an outlet on a circuit different from that to which the receiver is connected.
- Consult the dealer or an experienced radio/ TV technician for help.

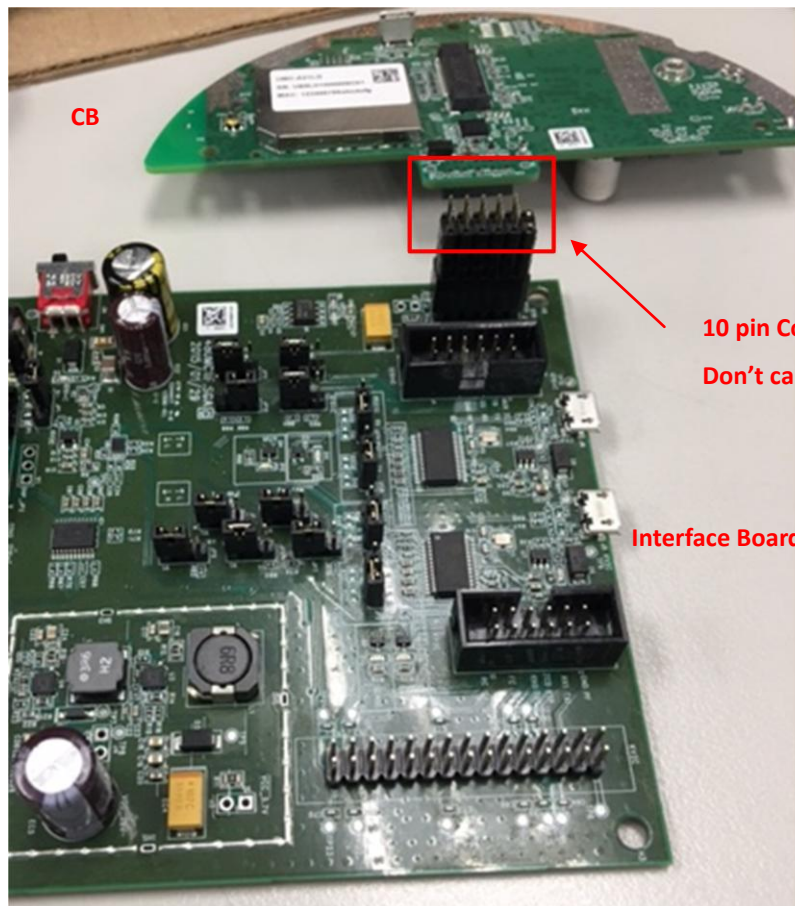
Radiation Exposure Statement

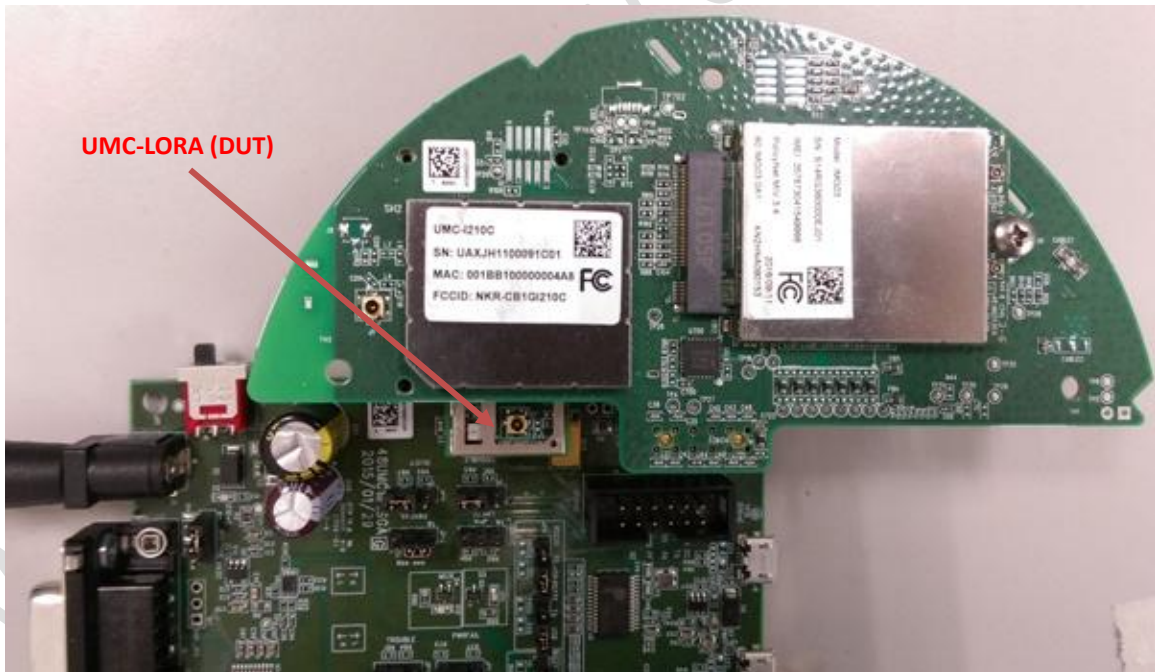
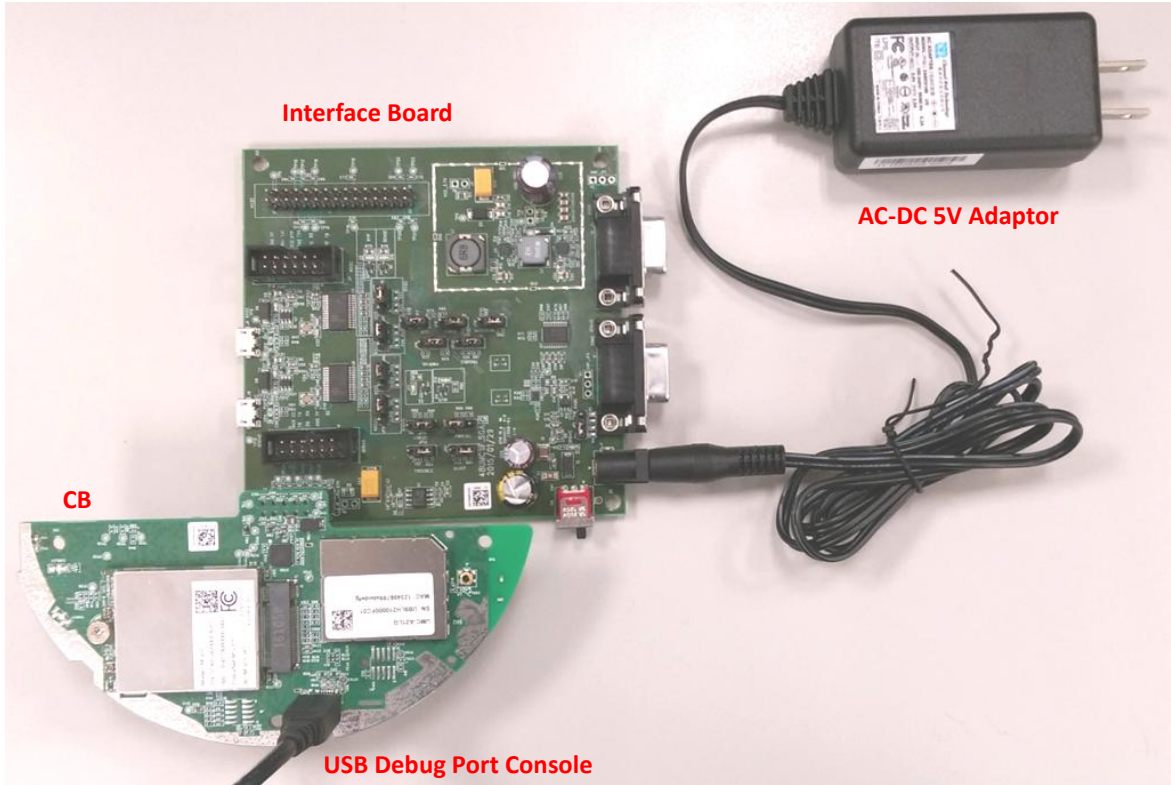
This module complies with FCC radiation exposure limits set forth for an uncontrolled environment. This module should be installed and operated with minimum distance of 20cm between radiator and human body.

Any changes or modifications not expressly approved by the party responsible for compliance could void the user's authority to operate the device.

2. Test Setup Configuration

2.1 Power Supply and Debug Console Connection



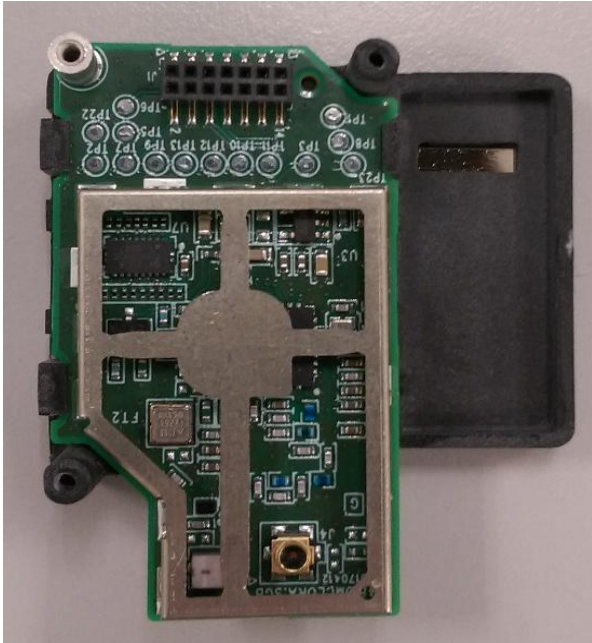


Power on Sequence:

- I. Connect DUT to interface board
- II. Attach AC-DC Adaptor & USB Debug Port Cable
- III. Wait for 20 seconds when system ready

WNC Proprietary & Confidential

2.2 RF Connection



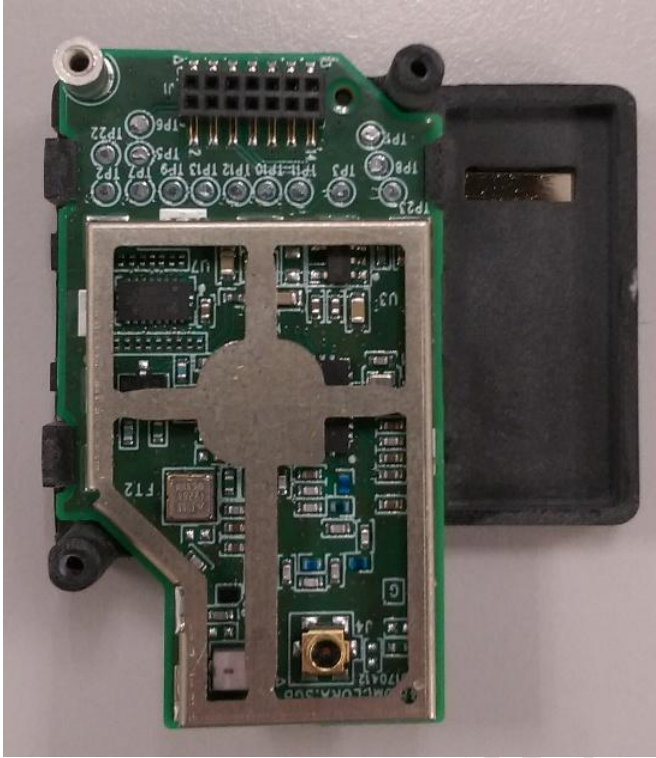
Connection for LORA internal antenna



Connection for conducted test

2.3 Hardware Component Introduction

LORA card (DUT)



AC/DC Adaptor



SMCC



Interface Board

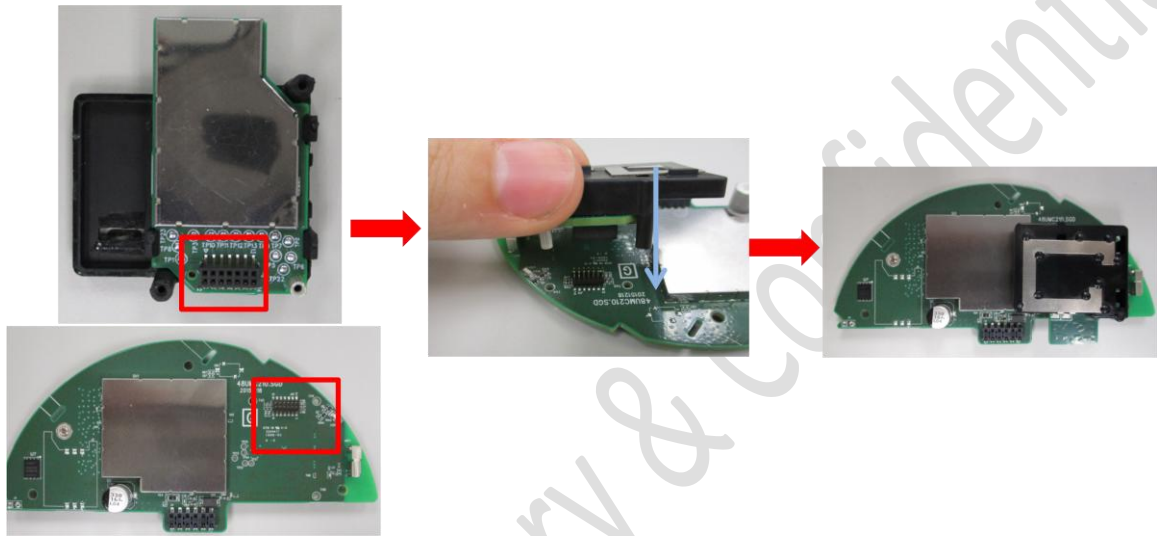


3. Installation and Test Method

3.1 Attach UMC-LORA card onto SMCC

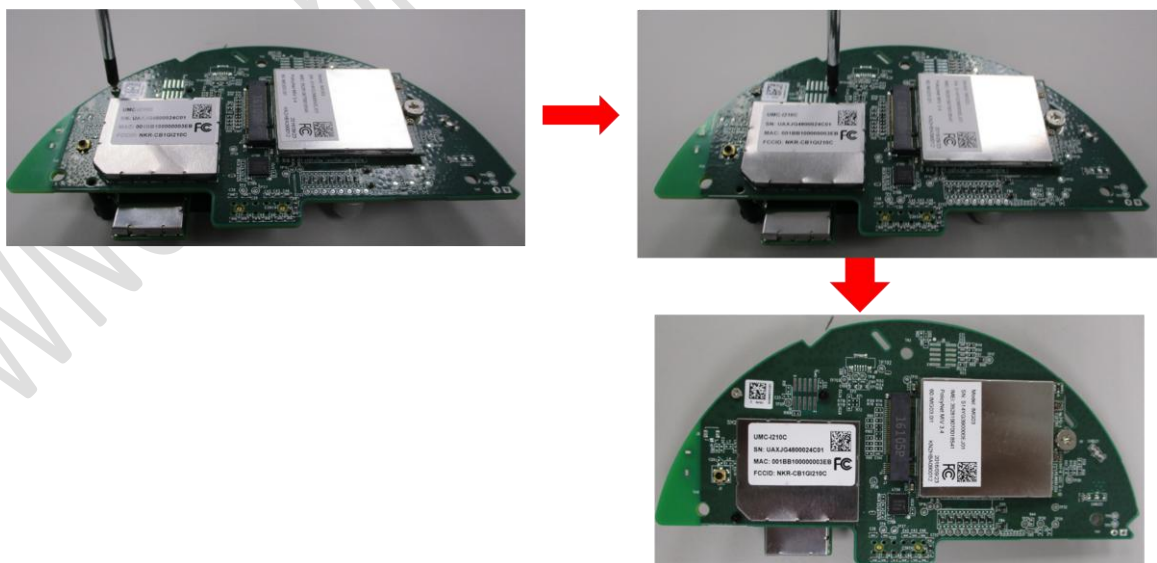
Step 1 : Connect the board to board connector

To invert Lora card and combine the female & male connector.



Step 2 : Fix the Lora card

To invert SMCC and screw 3 screws at indicated points on SMCC with Lora card. The black screw is corresponding to the SMT nut and the silver screws are corresponding to the holder bosses.



OEM installation statement:

This device is intended only for OEM integrators under the following conditions:

1) The antenna must be installed such that 20 cm is maintained between the antenna and users. For laptop installations, the antenna must be installed to ensure that the proper spacing is maintained in the event the users places the device in their lap during use (i.e. positioning of antennas must be placed in the upper portion of the LCD panel only to ensure 20 cm will be maintained if the user places the device in their lap for use) and

2) The transmitter module may not be co-located with any other transmitter or antenna. As long as the 2 conditions above are met, further transmitter testing will not be required. However, the OEM integrator is still responsible for testing their end-product for any additional compliance requirements required with this module installed (for example, digital device emissions, PC peripheral requirements, etc.).

IMPORTANT NOTE: In the event that these conditions cannot be met (for example certain laptop configurations or co-location with another transmitter), then the FCC authorization is no longer considered valid and the FCC ID cannot be used on the final product. In these circumstances, the OEM integrator will be responsible for re-evaluating the end product (including the transmitter) and obtaining a separate FCC authorization.

End Product Labeling:

This transmitter module is authorized only for use in devices where the antenna may be installed such that 20 cm may be maintained between the antenna and users (for example access points, routers, wireless ASDL modems, certain laptop configurations, and similar equipment). The final end product must be labeled in a visible area with the following: "Contains TX FCC ID: {INSERT FCC ID HERE}".

RF Exposure Manual Information That Must be Included:

The users manual for end users must include the following information in a prominent location "IMPORTANT NOTE: To comply with FCC RF exposure compliance requirements, the antenna used for this transmitter must be installed to provide a separation distance of at least 20 cm from all persons and must not be co-located or operating in conjunction with any other antenna or transmitter."

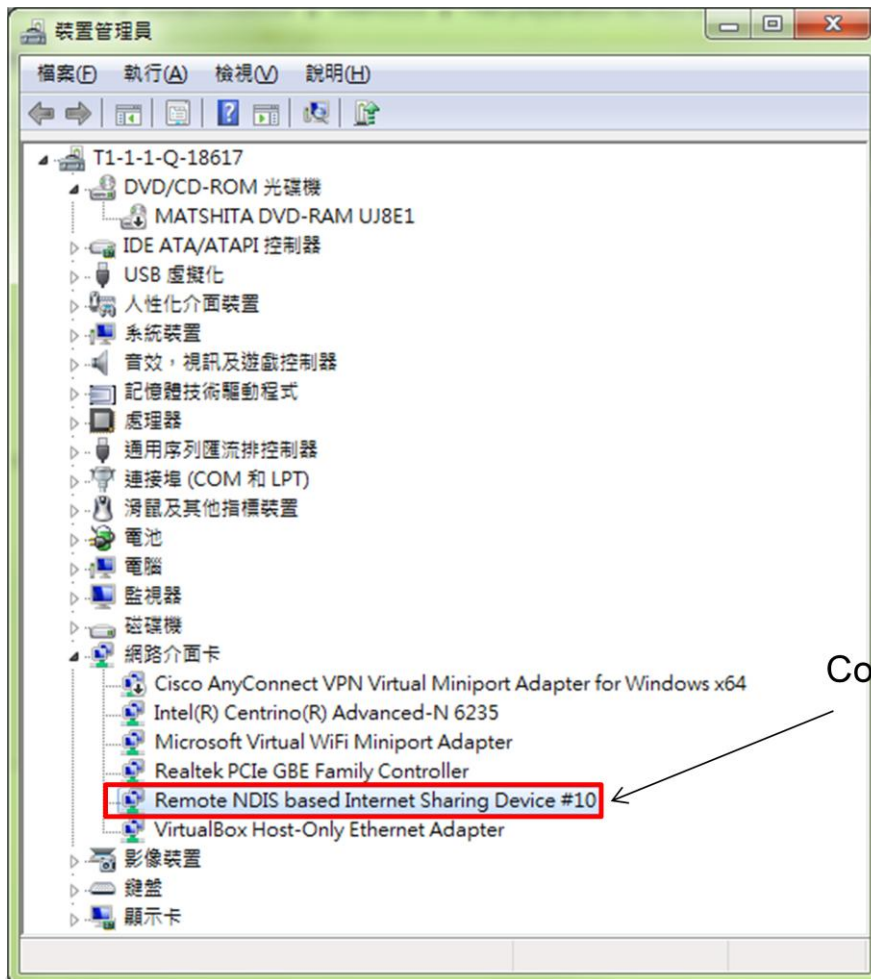
Additional Information That Must be Provided to OEM Integrators:

The end user should NOT be provided any instructions on how to remove or install the device.

3.2 Install GDM7243 Driver

Install the GDM7243 driver “GDM7243_windows_acm_drivers_installer_v1.1.0.0.zip”

3.3 Confirm the GDM7243 device

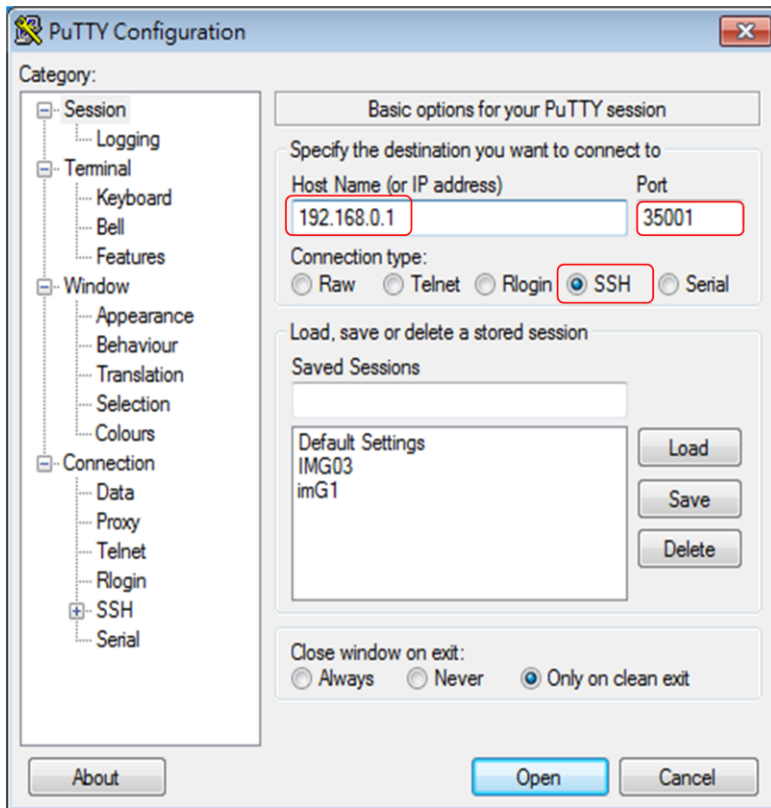


Confirm the com port “Remote NDIS based Internet Sharing Device ” in the Device Manager.

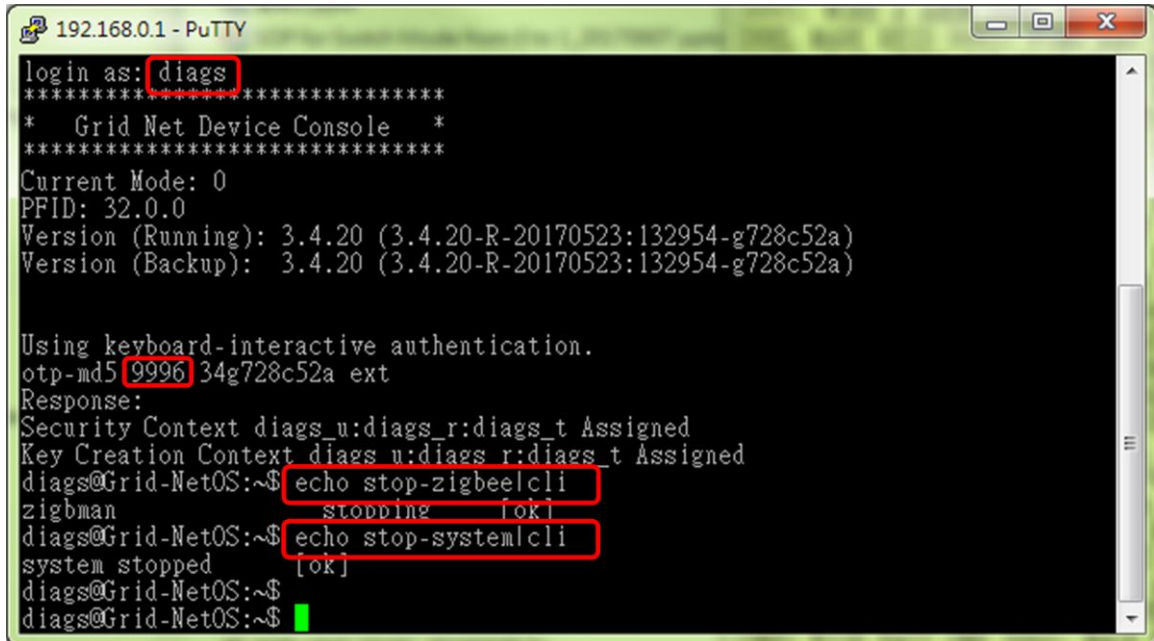
3.4 Open the com port by PuTTY

Install PuTTY for connection to DUT, refer to <http://www.putty.org/>

Host Name: 192.168.0.1 ; Port: 35001 ; Connection Type: SSH



no



```
192.168.0.1 - PuTTY
login as: diags
*****
*   Grid Net Device Console   *
*****
Current Mode: 0
PFID: 32.0.0
Version (Running): 3.4.20 (3.4.20-R-20170523:132954-g728c52a)
Version (Backup): 3.4.20 (3.4.20-R-20170523:132954-g728c52a)

Using keyboard-interactive authentication.
otp-md5 9996 34g728c52a ext
Response:
Security Context diags_u:diags_r:diags_t Assigned
Key Creation Context diags u:diags r:diags_t Assigned
diags@Grid-NetOS:~$ echo stop-zigbee|cli
zigman          stopping      [ok]
diags@Grid-NetOS:~$ echo stop-system|cli
system stopped  [ok]
diags@Grid-NetOS:~$
diags@Grid-NetOS:~$
```

1. Login as: **diags**
2. Find the one time password(OTP) with prompt number
3. Ex: 9998: **IDLE EYED MATE MID MAGI DIRT**
4. Enter command: **echo stop-zigbee|cli**
5. Enter command: **echo stop-system|cli**

OTP List:

9998: IDLE EYED MATE MID MAGI DIRT
9997: ACRE BULK MILE BOLO WAYS WOVE
9996: CHOU PAW OATH KANE ORE TERN
9995: NAG JIVE OS MUM LION HOBO
9994: SON DEAN MONK MAW LUCY ACRE
9993: BLUE FLAT LAWN HID TEET BOCK
9992: SOLD KIRK BOSS LULU INK ROOK
9991: SHOE OUST CASH ALAN ROSE LUSH
9990: CUBA HOLD HERB JUJU FUSS GAUL
9989: RITE FLAT TOOL HUM SEEK OS
9988: DOWN MITT FISK CAGE GEL MUCH
9987: HIGH DRY TORN LOY LUSH FROM
9986: SNOW FAWN LAME MURK BED EAT

3.5 Lora Test Command

```
# lora-mfgtool
```

```
Usage: lora-mfgtool [-crt] [-f freqInHz] [-p power] [-b bandwidth(0-2)]
```

```
Command Summary:
```

- c continuous wave mode
- r lora rx mode (rssi and snr report)
- t lora tx mode
- f frequency in Hz
- b bandwidth, 0-125khz, 1-250kHz, 2-500khz
- p power (range -128 to 127, used with -c and -t modes)

```
# lora-mfgtool -t -f 915000000 -p 20 -b 2 → Tx command  
freq: 915000000 power: 20 BW: 2  
TxContinuous mode.
```

```
# lora-mfgtool -r -f 915000000 → RX command  
freq: 915000000 power: 14
```

```
Got Packet: size[64], rssi[-111], snr[21]  
48 65 6c 6c 6f 20 72 61 64 69 6f 3a 00 00 01 02  
03 04 05 06 07 08 09 0a 0b 0c 0d 0e 0f 10 11 12  
13 14 15 16 17 18 19 1a 1b 1c 1d 1e 1f 20 21 22  
23 24 25 26 27 28 29 2a 2b 2c 2d 2e 2f 30 31 00
```


4. Test Equipment

It is suggested to use Anritsu MT2830C for RF conductive tests.setc

5. Antenna performance

For ISM radiation tests, the ISM antenna gain shows in below table.

Frequency(MHz)	Average Gain(dB)	Peak Gain(dB)	Efficiency(%)
902	-5.16	1.03	30%
905	-5.18	0.97	30%
910	-5.09	0.84	31%
915	-5.18	0.73	30%
920	-5.19	0.7	30%
925	-5.28	0.58	30%
928	-5.25	0.57	30%