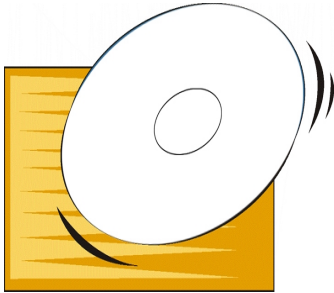


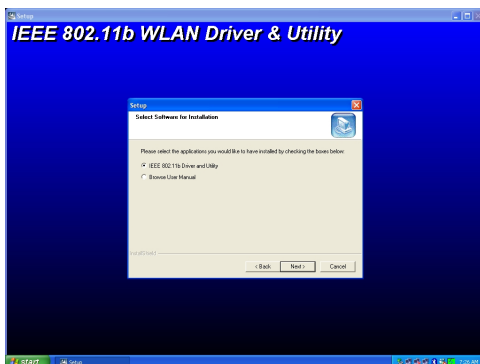
2. Quick Start to Wireless Networking

(Windows XP)

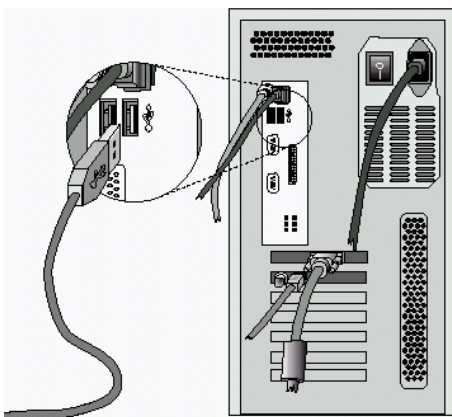
1. **Insert the installation CD.** It automatically starts the setup program for WLAN Utility and Driver.



2. **Follow the installation wizard** to complete the software installation process.



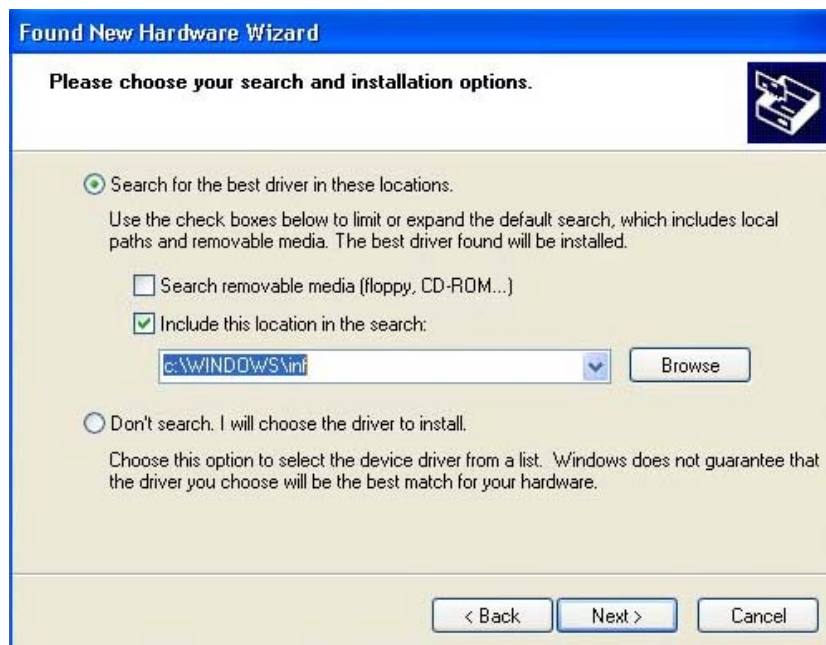
3. **Insert the USB card.**



4. When the USB card is detected, “Found New Hardware Wizard” window pops up. Select “Install the software automatically”, click “Next” and go on to step 6. To save the searching time, you may select “Install from a list or specific location”, click “Next” and go on to step 5 to assign a designated location for searching.



5. Enter the designated location for driver searching. Click “Next”.



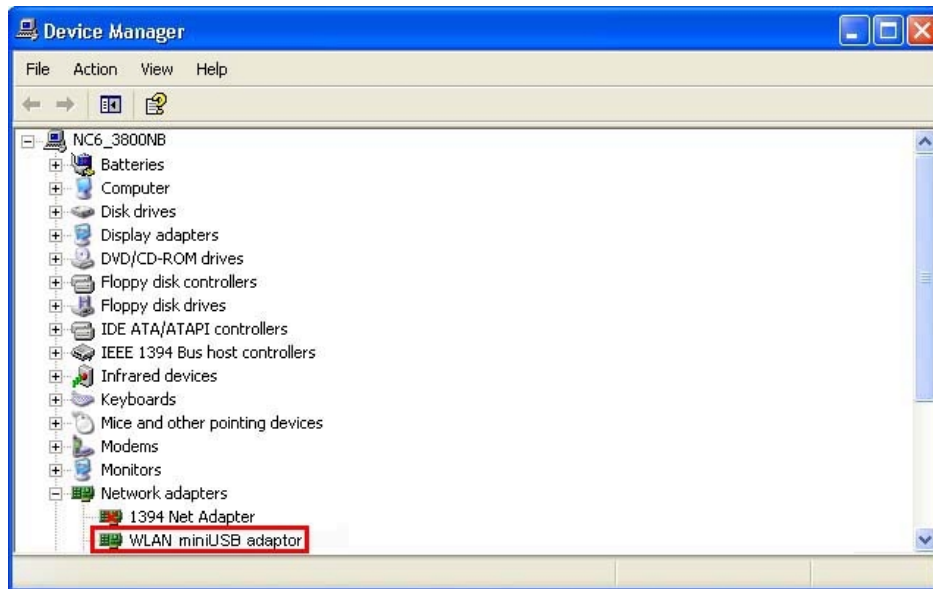
6. Click “Finish”.



7. A dialog box pops up informing you that the USB card is ready to be used.



8. Operation System will detect new device and prompt the driver automatically. You may check it through Start>Settings>Control Panel > System > Hardware >Device Manager.



9. **Double click the shortcut icon.** The IEEE 802.11b WLAN Utility window appears. You can also see a small red icon in Windows System Tray.

