

CA10002

User's Manual

This document provides instructions for installing the antenna and describes the requirements and specifications of this product. The antenna can be mounted on a vertical or horizontal surface, or on a slope. Read this document carefully before installing to ensure your safety and product performance.

Contents

FEDERAL COMMUNICATION COMMISSION (FCC) INTERFERENCE STATEMENT	3
BEFORE YOU START	3
IMPORTANT SAFETY INSTRUCTIONS	3
UNPACKING INFORMATION	5
WIRING PLAN	6
SELECTING AN INSTALLATION LOCATION	6
INSTALLING THE ANTENNA	7
LED INDICATORS	11
PRODUCT SPECIFICATIONS	11

Federal Communication Commission (FCC) Interference Statement

This equipment has been tested and found to comply with the limits for a Class B digital device, pursuant to Part 15 of the FCC Rules. These limits are designed to provide reasonable protection against harmful interference in a residential installation. This equipment generates, uses and can radiate radio frequency energy and, if not installed and used in accordance with the instructions, may cause harmful interference to radio communications. However, there is no guarantee that interference will not occur in a particular installation. If this equipment does cause harmful interference to radio or television reception, which can be determined by turning the equipment off and on, the user is encouraged to try to correct the interference by one of the following measures:

- Reorient or relocate the receiving antenna.
- Connect the equipment into an outlet on a circuit different from that to which the receiver is connected.
- Consult the dealer or an experienced radio/TV technician for help.
- Install an approved low pass filter

FCC Caution: Any changes or modifications not expressly approved by the party responsible for compliance could void the user's authority to operate this equipment.

This device complies with Part 15 of the FCC Rules. Operation is subject to the following two conditions: (1) This device may not cause harmful interference, and (2) this device must accept any interference received, including interference that may cause undesired operation.

Radiation Exposure Statement:

This equipment complies with FCC radiation exposure limits set forth for an uncontrolled environment. This equipment should be installed and operated with minimum distance 20cm between the radiator & your body.

Before You Start

Carefully follow the warnings and safety notices in this manual. Please pay special attention to the following indications of potentially hazardous situations:

Warning:

Indicates a hazardous situation, which, if not avoided, could result in serious injury or even death.

Caution:

Indicates a situation, which, if not avoided, could damage this product or other devices.

Note:

Indicates additional information to alert the user to possible issues and to help the user understand, use and maintain the product.

Important Safety Instructions

Caution:

These servicing instructions are for use by qualified service personnel only. To reduce the risk of electric shock do not perform any servicing other than that contained in the operating instructions unless you are qualified to do so.

 **Warning:**

For your safety, follow these important safety precautions:

- 1) Read these instructions.
- 2) Keep these instructions.
- 3) Heed all warnings.
- 4) Follow all instructions.
- 5) Do not use this unit near water.
- 6) Clean only with dry cloth.
- 7) Do not block any ventilation openings. Install in accordance with the manufacturer's instructions.
- 8) Do not install near any heat sources such as radiators, heat registers, stoves, or other apparatus (including amplifiers) that produce heat.
- 9) Do not defeat the safety purpose of the polarized or grounding-type plug. A polarized plug has two blades with one wider than the other. A grounding type plug has two blades and a third grounding prong. The wide blade or the third prong are provided for your safety. If the provided plug does not fit into your outlet, consult an electrician for replacement of the obsolete outlet.
- 10) Protect the power cord from being walked on or pinched particularly at plugs, convenience receptacles, and the point where they exit from the unit.
- 11) Only use attachments/accessories specified by the manufacturer.
- 12) Use only with the cart, stand, tripod, bracket, or table specified by the manufacturer, or sold with the unit. When a cart is used, use caution when moving the cart/unit combination to avoid injury from tip-over.
- 13) Unplug this unit during lightning storms or when unused for long periods of time.
- 14) Refer all servicing to qualified service personnel. Servicing is required when the unit has been damaged in any way, such as power-supply cord or plug is damaged, liquid has been spilled or objects have fallen into the unit, the unit has been exposed to rain or moisture, does not operate normally, or has been dropped.

 **Warning:**

When installing the product, you must take extreme care not to come into contact with electric power lines. You risk serious injury or even **death** if the product is located near overhead power lines, electric lights or power circuits. Be sure to maintain a safe distance before you start any installation procedures. We recommend that you maintain a minimum distance of 20 feet (about 6 meters) from all power lines.

If any part of the product comes into contact with a power line, stay away from the product and all its related components. **DO NOT REMOVE IT YOURSELF.** Call your local power company for assistance.

 **Warning:**

For your personal safety, follow these important safety precautions:

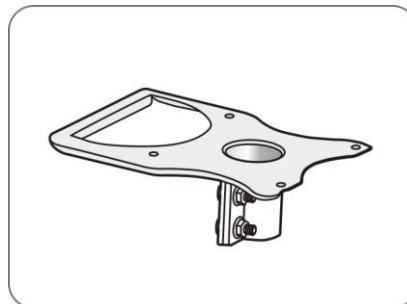
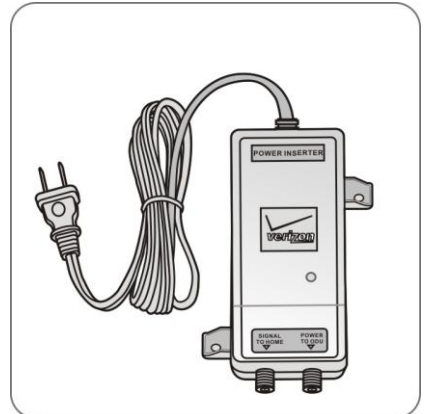
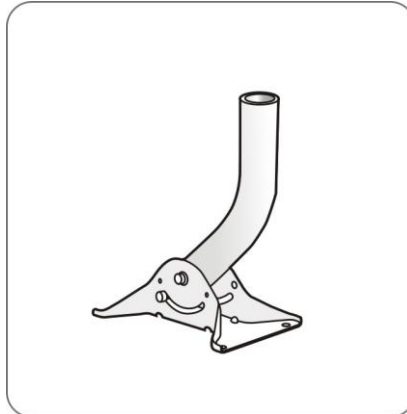
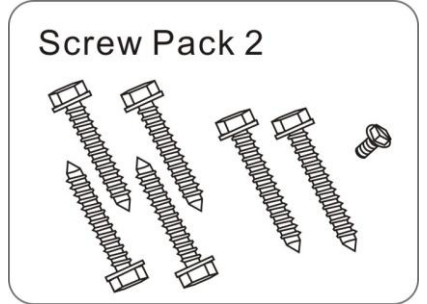
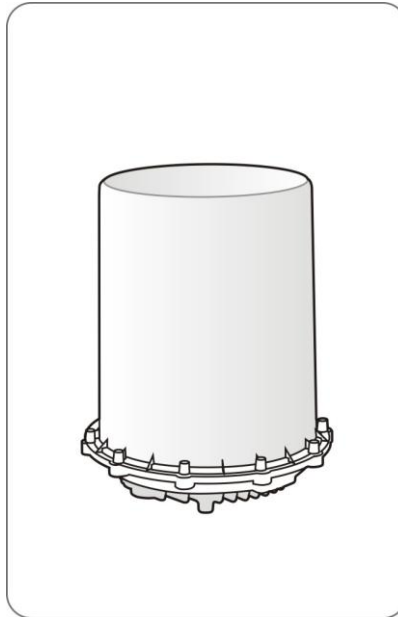
1. Do not install the product on a wet or windy day.
2. Perform as many of the installation procedures as possible on the ground.
3. When installing the product, if you accidentally drop any part of it, do not try to catch it. Let it fall.
4. Installation of the product is usually performed by two or more people. Ensure that all participants are well-trained and understand the tasks that they are assigned.
5. Do not use a metal ladder, or if you do make sure it has rubber feet installed. Metal ladders can be deadly as they conduct electricity.
6. Wear shoes with rubber soles.

Unpacking Information

Thank you for purchasing this product. Before installation, please confirm you have collected all required items:

⚠ Note: Not all accessories are included inside one the same carton. Consult your dealer if any of them are missing.

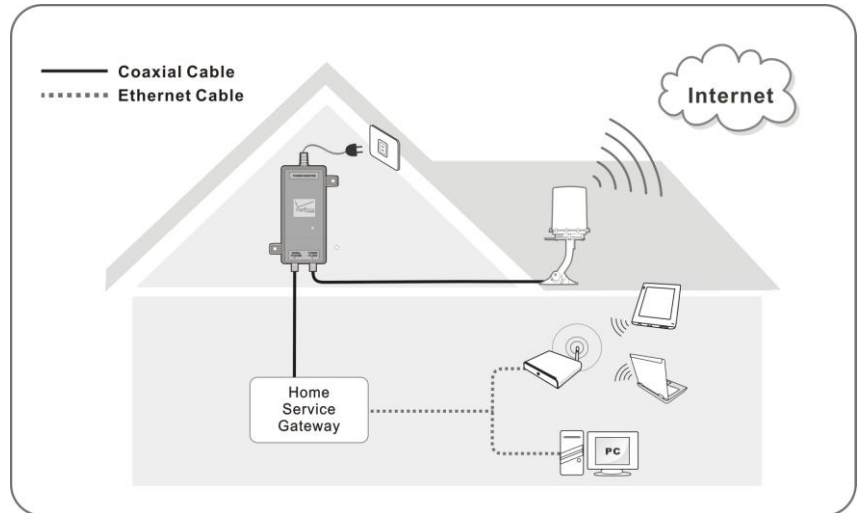
- **The Antenna**
- **Antenna pedestal**
- **Antenna Mounting plate**
- **Screw pack 1:**
5/16"-18UNCx15mm (4PCS)
- **Screw pack 2:**
#10-32UNF*1/2" L FLANGE (1PCS)
825A807624-S 5/16"-9T*3" (2PCS)
825A805124-S 5/16"-9T*2" (4PCS)
- **Power Inserter**



Wiring Plan

Basic connection:

In this example, the Cantanna connects directly to the power inserter and then to the Home Service Gateway without connecting home coaxial network.



Selecting an Installation Location

The product is designed to be installed vertically on a flat surface. The surface can be horizontal, vertical or a slope. See following notes before choosing an installation location:

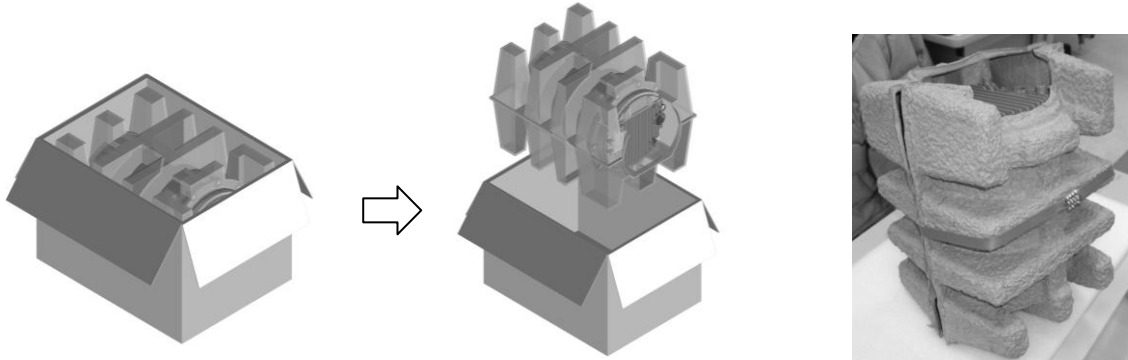
Note:

- Ensure that there is enough space for adjusting the antenna angles.
- Antenna performance could be influenced by nearby obstacles, especially metal objects and meshes.
- Install the antenna away from wireless devices that operates in 700 GHz. Those devices may cause signal interference due to operating in the same frequencies.

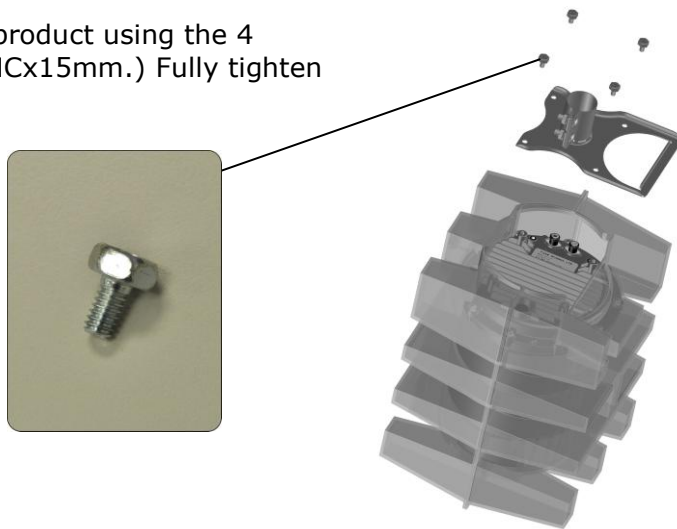


Installing the Cantenna

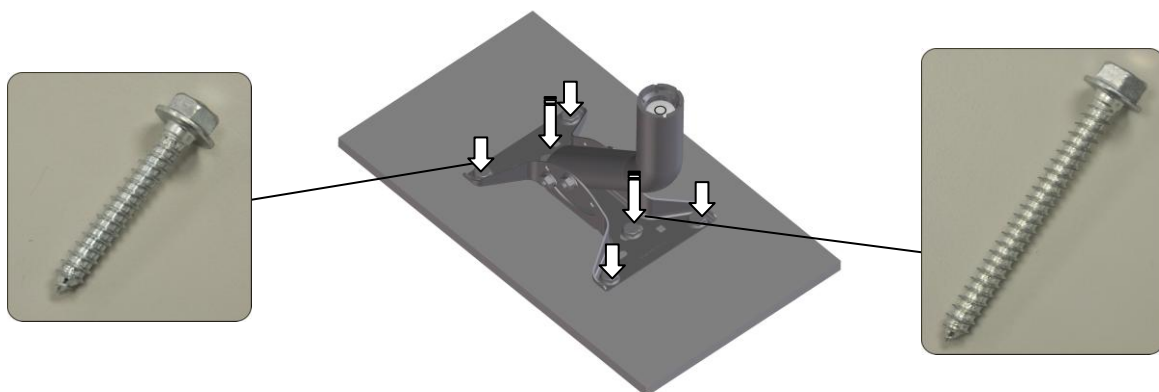
1. With the protection pulp, take the product out of the box. Place the product upside down on a flat surface



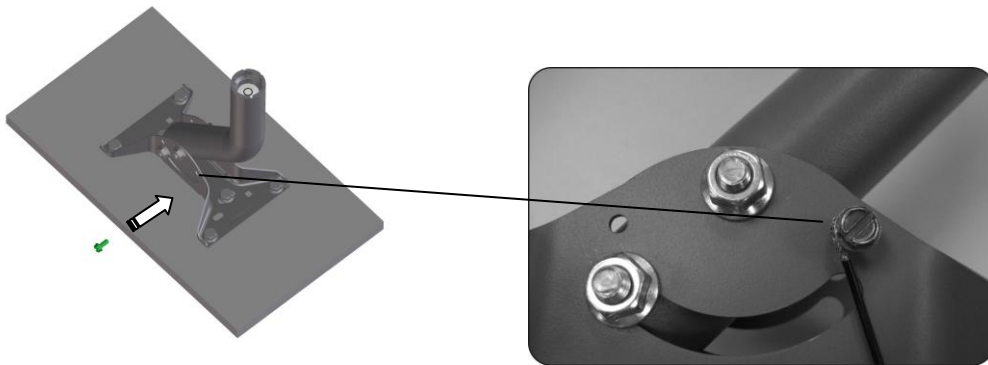
2. Install the mounting plate with the product using the 4 screws in screw pack 1 (5/16" 18UNCx15mm.) Fully tighten the four screws.



3. Install the pedestal to the location you selected using the screws in screw pack 2.
Note: 825A807624-S 5/16"-9T*3" (2PCS) and 825A805124-S 5/16"-9T*2" (4PCS)

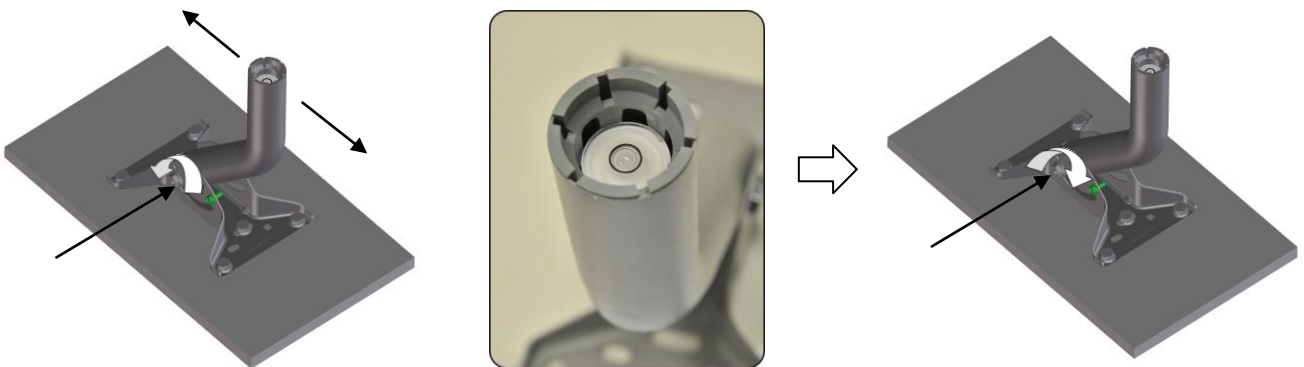


4. Tighten the grounding screw and securely ground the wire.

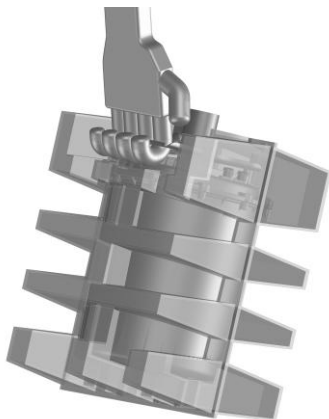


5. Adjust the angle of the pedestal mast. Use the spirit level and confirm the bubble is perfectly located at the center position. Fully tighten the mast screws after confirming the mast angle.

Note: You may also need to fine-tune the height of the pedestal screws that you installed in step3 for obtaining a perfectly horizontal position.



6. Grip the mounting plate and take the product to the installation location.

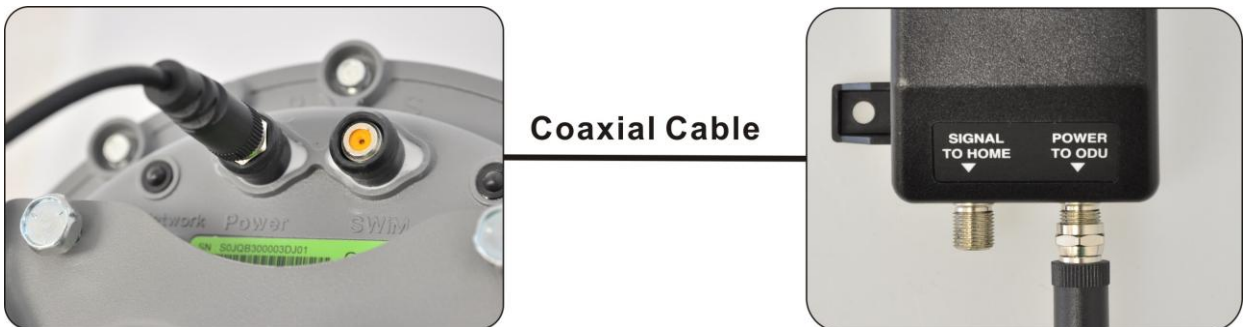


7. Attach the Antenna to the pedestal and remove the protection pulp. Tighten the 2 bolts on the mounting plate.



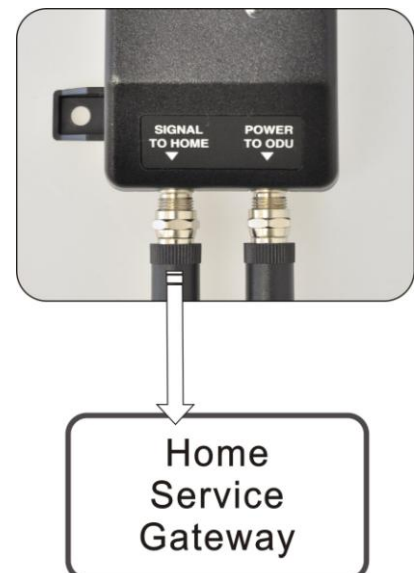
8. Connect one end of a coax cable to the **Power** port of the Antenna. Run the cable from the Antenna to the power inserter and attach the cable to the "POWER TO ODU" port of the power inserter.

Note: This step demonstrates the basic connection method. You can also choose to attach the coax cable from the Antenna to your home coaxial network first, and then attach the power inserter to your home coaxial network in some other locations.



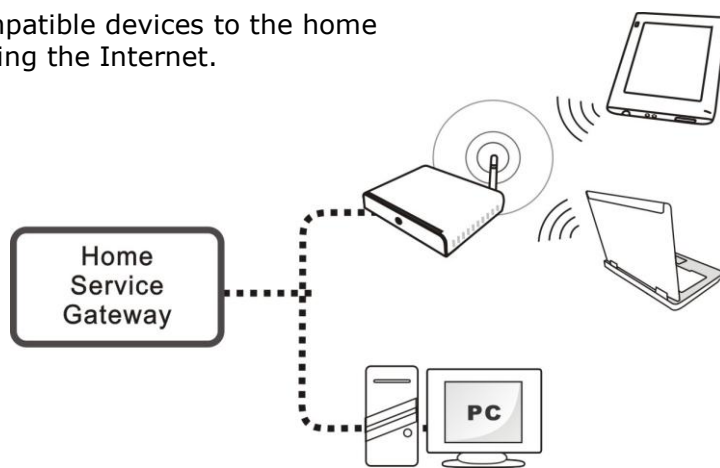
9. Connect a coaxial cable from the **SIGNAL TO HOME** port of the power inserter to your home service gateway.

Note: If you have attached the Antenna to your home coaxial network instead of connecting it to the power inserter directly, skip this step and attach the home service gateway to your coaxial network directly.

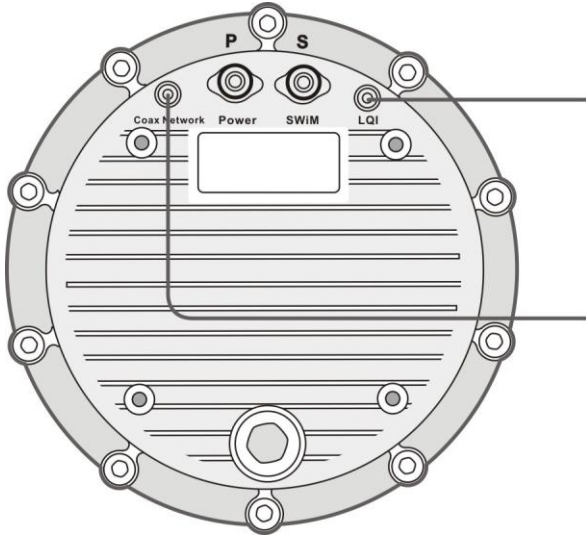


10. Plug the power inserter to a wall power socket.

11. Connect your Ethernet compatible devices to the home service gateway for accessing the Internet.



LED Indicators



LQI

- Red:** Low LTE signal strength
- Blue:** Medium LTE signal strength
- Green:** High LTE signal strength

Coax Network

- Red:** Power supply connected
- Green:** Valid connection to Home service gateway.

Product Specifications

Items	Description
Power Input	DC 15~20.5V, 1.2A
Operating Temperature	60 degree C