

# Table of Contents

<b>What is MobileMapper 6?</b> .....	<b>1</b>
<b>Package Content &amp; Product Specifications</b> .....	<b>2</b>
Package Content.....	2
Software Provided as Standard.....	2
Optional Software.....	2
Operating System.....	2
GPS Characteristics.....	2
Physical Characteristics.....	2
Environmental Characteristics.....	3
Memory Characteristics.....	3
Communication Capabilities.....	3
Power Requirements.....	3
Other Features.....	3
Other Features.....	3
<b>Description</b> .....	<b>4</b>
Front View.....	4
Rear View.....	5
Side View (Left).....	5
Side View (Right).....	6
Top View.....	6
Rubber Flaps.....	6
<b>First-Time Use</b> .....	<b>7</b>
Inserting Fresh Batteries.....	7
Turning the Receiver On.....	7
Adjusting the Backlight.....	8
Other Preliminary Settings.....	8
How to Hold the Receiver.....	9
<b>Installing New Software</b> .....	<b>10</b>
From an SD Card.....	10
From your Office Computer.....	10
<b>Using the Pictures &amp; Videos Application</b> .....	<b>12</b>
Using the Camera.....	12
Making a Video.....	13
Changing Picture Settings.....	14
<b>Accessing the Internet</b> .....	<b>15</b>
Creating a Bluetooth Connection with a Mobile Phone.....	15
Creating a GPRS Connection Via a Mobile Phone.....	16
Using Internet Explorer.....	17
Subsequent Uses.....	17
Wireless Manager - Ending a GPRS Connection.....	17
<b>Using Windows Mobile 6 Software</b> .....	<b>18</b>



## What is MobileMapper 6?

---

Thank you for purchasing a MobileMapper 6 from Magellan. This Getting Started Guide will give you useful information about your receiver. It will also guide you in your first steps using MobileMapper 6 in the field.

MobileMapper 6 is a professional GPS/GIS handheld receiver that incorporates an SBAS-enabled, high-sensitivity GPS receiver as well as Microsoft Windows Mobile® operating system (version 6).

MobileMapper 6 comes in a rugged design suitable for all your mobile mapping applications. Being an open platform, MobileMapper 6 allows you to choose the Windows Mobile-compatible, GIS software that is right for you.



# Package Content & Product Specifications

---

- Package Content**
- MobileMapper 6 GPS receiver
  - USB data cable
  - 2 x AA batteries
  - Spare stylus (5)
  - Getting Started CD containing the present manual.

- Optional Accessories**
- External GPS antenna
  - Windshield mount
  - Cigarette lighter power adapter
  - AC power adapter
  - Carrying case.

- Operating System**
- Microsoft Windows Mobile version 6
  - Processor: 400 MHz
  - Bluetooth wireless technology
  - USB interface: 1.1 (device only)

- GPS Characteristics**
- GPS chipset: SiRFstarIII
  - GPS accuracy (with SBAS): 2-5 meters
  - Channels: 12 (L1 code only)
  - Antenna type: Patch
  - Supported protocols: NMEA and SiRF
  - Update Rate: 1 Hz

- User Interface**
- Touch screen
  - Virtual keyboard
  - Handwriting recognition
  - Audio notifications
  - Screen backlight

**Software Provided  
as Standard**

Windows Mobile Operating System Version 6, including the following applications:

- ActiveSync
- Calculator
- Calendar
- Notes
- File Explorer
- E-mail messaging
- Internet Explorer
- Office Mobile (Excel Mobile, PowerPoint Mobile, Word Mobile)
- Pictures and Videos Viewer
- Windows Media Player, etc.

**Physical  
Characteristics**

- Size: 14.6 x 6.4 x 2.9 cm (5.75 x 2.5 x 1.13")
- Weight (batteries included): 224 g (7.9 oz)
- Screen size: 2.7" (6.86 cm)
- Screen resolution: QVGA (240 x 320 pixels)
- Environmental: IPX7, -20° to +50°C, withstands 1-meter drop.

**Memory  
Characteristics**

- SD memory card slot
- 128-MB NAND Flash memory
- 64-MB SDRAM memory

**Power  
Requirements**

- 2 x standard AA batteries
- Battery life: 10 hours

**Other Features**

- Camera: Integrated 2-megapixel CMOS
- Loudspeaker and microphone
- Sensors: e-Compass, G-sensor, barometer
- LED Flashlight
- Language supported: English, French, German, Greek, Italian, Japanese, Korean, Portuguese, Simplified Chinese, Spanish, Traditional Chinese.

## Front View

### Display Screen

The display screen [1] is a large 2.7-inch QVGA color touch screen.

### Keypad, Scroll and Enter Buttons

The keypad [2] consists of the following items:

- ZOOM+ and ZOOM-: Use these buttons to adjust the scale of the map displayed on the screen (only applicable to software displaying maps).
- LOG, MENU, ESC buttons: These buttons are specific to software applications designed to use these buttons. They have no effect with the standard Windows Mobile utilities, except for the ESC button in some cases.

The Enter button [3] is used to accept highlighted input and initiate various functions.

The Scroll button [4] is the ring around the Enter button. It is used to move the cursor on the screen, from a data field to the next on a parameter screen, from an option to another in a menu, from a geographical location to another on a map screen. Pressing the ring has an effect only in the up, down, left and right directions.

### Stylus and Stylus Holder

The stylus [5] is a short plastic stick, which you can use to work directly from the touch screen. When not used, the stylus can conveniently be stored in the receiver by inserting it into the dedicated holder [5].

### Built-in Antenna

The MobileMapper 6 incorporates a built-in antenna [6]. Because of the presence of a built-in antenna, the receiver should be held properly to optimize satellite reception.

### Microphone

A microphone is used by the voice recorder. Keep the small aperture [7] clear when recording a vocal comment.



## Rear View



### Camera Lens

Keep the camera lens [8] clear when taking pictures or recording videos.

### Loudspeaker

As a multi-media device, MobileMapper includes a high-quality loudspeaker [9] used by any voice-based software application.

### USB Data Connector

Use this connector [10] to secure the Magellan USB Data cable onto the receiver. The MobileMapper 6's USB port is used exclusively for a connection to a computer via Microsoft ActiveSync.

### Battery Compartment

The receiver uses two standard AA batteries, whether rechargeable or not. To access the battery compartment [11], loosen the quarter-turn finger screw [12].

## Side View (Left)



### Flashlight Button

The flashlight button [13] has two functions:

- Screen backlight: Press the button shortly to change the screen backlight setting. There are five different backlight levels (off, low, medium, high, very high). Each new short press on the button allows you to select the next backlight level.
- Flashlight: A long press on this button (about two seconds) will indefinitely turn on the flashlight. Orientate the receiver accordingly to use the flashlight. To turn it off, hold the button pressed until it goes out.

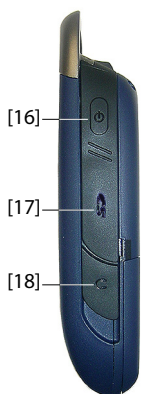
### Hold Slide Switch

Setting the Hold slide switch [14]\* to "HOLD" freezes the screen and makes the stylus and buttons unusable. Use this button to suspend the use of the receiver and protect it from any accidental action.

### External Antenna Input

Use the external antenna input [15]\* to connect an external antenna to the receiver. When an external antenna is connected, the built-in antenna is automatically disconnected from the receiver input.

## Side View (Right)



### Power Button

Use the Power button **[16]** to turn on or off the MobileMapper 6. In both cases, a short press is enough to turn on or off the receiver.

Rather than actually turning off the MobileMapper 6, the Power button in fact puts the receiver in suspend mode. This means that when you next turn it on, the receiver will restore the context in which it was when you last turned it off.

Only complete removal of the internal battery, disconnection of the external AC adapter or a reset action will actually shut down the receiver.

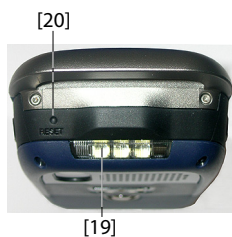
### SD Card Slot

Gives access to a slot **[17]\*** where you can insert or extract an SD card.

### Earphone Output

A 1/4-inch jack (TRS connector) **[18]\*** used to connect an earphone to the MobileMapper 6.

## Top View



### Three-LED Flashlight

This is a powerful white flashlight **[19]** that can advantageously be used in dim light conditions. Using MobileMapper 6 as a flashlight may however be incompatible with GPS reception, i.e. in the way you hold the receiver.

### Reset button

Press the Reset button **[20]** using the stylus when you need to perform a software reset. This will re-boot the Windows Mobile Operating System.

## Rubber Flaps



Items **[14]**, **[15]**, **[17]** and **[18]** presented above are all marked with a “\*” symbol indicating that a black rubber flap is used to protect each of them.

To access one of these items, just insert a nail underneath the flap and pull it open.



## Inserting Fresh Batteries



- Turn the finger screw anticlockwise by a quarter turn and pull the battery door open. The battery door stays attached to the receiver via a short black strap.
- Insert the two AA batteries head-to-tail. Observe the polarity for each battery by reading the “+” and “-” signs carved onto the bottom of the battery compartment.
- Put the battery door back into place by first inserting the two lugs, located on either side of the strap, into the receiver case. Then push the door against the case and rotate the finger screw clockwise by one-quarter turn to secure the door.

## Turning the Receiver On

- Press the Power button briefly. (This button is located at the top and on the right side of the receiver).

After a few seconds, the Magellan Professional logo will appear on the screen, followed by the Windows Mobile splash screen. Then MobileMapper 6 will emit a beep suggesting that you tap anywhere on the screen (**Tap the screen to set up your Windows Mobile-based device**) to initiate the setup sequence described below:

1. Screen alignment: Tap the target firmly and accurately at each location on the screen. The target will continue to move until the screen is aligned.
2. Stylus: Run this step to learn how to perform single-tap and tap-and-hold actions with the stylus.
3. Date & Time: Choose your time zone and enter your local date and time parameters.
4. Password: You can protect your data by requiring a password when the device is turned on. A password also helps to protect networks that you access. Tap **Next** to set up a password.

Start Screen



## Adjusting the Backlight

- Press the Flashlight button briefly and repeatedly until you get the desired level of backlight. (This button is located at the top and on the left side of the receiver).

## Other Preliminary Settings

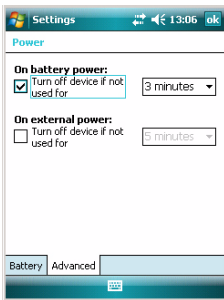
- Tap **Start**, then **Settings**.
- Below are the other settings you can now perform:

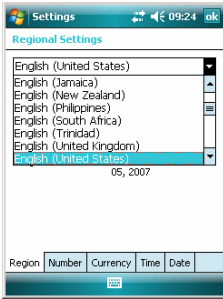
### Power Management

- Double-tap on the **Power** icon.

The **Battery** tab shows the energy left in the battery, in percentage. This indication is irrelevant when the MobileMapper 6 is powered from a computer through the USB data cable.

- Tap on the **Advanced** tab. This tab allows you to ask for automatic power shutdown if the receiver stays idle for the period of time you choose. Settings are for both battery and external power source.
- Tap **ok** to validate all your changes and close the Power window.





## Regional Settings

- Double-tap on the **Regional Settings** icon.
- On the **Region** tab, select your country.
- Use the other tabs to set local settings:
  - Number format
  - Currency choice
  - Time and date formats
- Tap **ok** to validate all your changes and close the Regional Settings window.

## How to Hold the Receiver



Use of the MobileMapper 6 while receiving satellites requires that you hold the receiver properly.

The receiver will have the best view of the sky when you hold it at an angle of 45 degrees from horizontal and not too close to you.

## From an SD Card

If it is provided on an SD card, follow the instructions below to install the new software:

- Insert the SD card into MobileMapper 6's SD card slot.
- Tap **Start**, then **File Explorer**.
- In the menu bar, tap on **My Device** and select **Storage Card**. File Explorer now lists the content of the SD card
- Scroll through the list of files to find the setup file of the new software.
- Tap on the file name to start installation and then follow the instructions to complete the installation.

## From your Office Computer

If the installation files cannot be handled directly by MobileMapper 6, you can use your office computer and a Microsoft ActiveSync connection to transfer the installation files from the computer to MobileMapper 6.

This means ActiveSync should first be installed on your computer. You can download this software for free from the following web site:

<http://www.microsoft.com/windowsmobile/activesync/>

Choose the ActiveSync version that is suitable for your computer. Nothing needs to be done on MobileMapper 6 as ActiveSync is pre-installed by default.

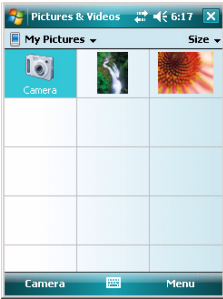
Follow the instructions below.

- Connect the USB Data cable between MobileMapper 6 and a USB port on your computer
- Turn on MobileMapper 6. Wait for the computer to activate the ActiveSync connection. A sound alarm will be heard when this happens.
- On the computer, close the Synchronization Setup Wizard by clicking **Cancel**.
- In the menu bar of the Microsoft ActiveSync window, click **Explore**.
- From the Mobile device window, navigate to the computer drive and folder containing the software to install.
- Run the setup file located on the computer and instruct the installation procedure to install the software on the MobileMapper 6. Please refer to the software documentation for more information and detailed instructions.

For some applications, you may have to copy the setup file to MobileMapper 6. In this case, follow the instructions below:

- From the Mobile device window, navigate to the computer drive and folder containing the software to install.
- Copy the file or files needed for the software installation.
- Navigate to the Mobile Device and paste the files in one of your folders. If you want to paste the files on the SD card, if there is one, first double-click “My Windows Mobile-Based Device” and then “Storage Card” before pasting.
- Run the setup file and follow the instructions to complete the installation. Make sure you install your program in the non-volatile memory.

## Using the Camera

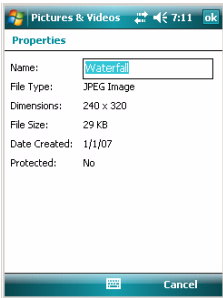


## Taking a Picture

- Tap **Start, Programs** and **Pictures & Videos**. This opens the “My Pictures” folder in which you can see the list of existing images and videos. The first item in the list is the Camera, the tool you will now be using to take pictures. The light-blue background means the camera is currently selected.
- Tap **Camera**, or press the Enter button, to turn on the camera. Wait about five seconds until the center of the window displays the viewfinder of the camera. You then have about one minute to take a picture. After this delay, the screen will display “Standby”. If this happens, just tap anywhere on the blank area. The viewfinder will re-appear after about two seconds.
- Now use the MobileMapper 6 as a camera. Look at the viewfinder to frame the picture you want to take.
- When you are ready, stay as still as possible and press the Enter button to take the picture. You can hear the click of the camera.
- Tap **ok** to turn off the camera and close the window. The picture you have taken is now visible in the “My Pictures” folder.

## Renaming a Picture

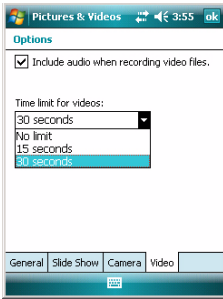
- With the “My Pictures” folder open, tap on the desired picture. This opens a new window showing a larger view of the picture.
- Tap **Menu** and then **Properties**.
- Rename the file and tap **ok**.



## Deleting a Picture

- With the “My Pictures” folder open, select the desired picture using the Scroll button.
- Tap **Menu** and then **Delete**.
- Tap **Yes** to confirm file deletion.

## Making a Video



### Setting the Duration of a Video Film

- Tap **Start** and then **Pictures & Videos**. This opens the “My Pictures” folder in which you can see the list of existing images and videos.
- Tap **Menu** and then **Options**.
- Tap on the **Video** tab.
- Tap within the **Time limit...** field and select one of the options below:
  - No limit: Choose this option to be able to film a video over an unlimited period of time.
  - 15 seconds: Choose this option to limit the duration of every video you’ll film to 15 seconds.
  - 30 seconds: Choose this option to limit the duration of every video you’ll film to 30 seconds.
- Tap **ok** to accept the changes and close the Options window.

### Starting a Video

- Tap **Camera** to turn on the camera. Wait about five seconds until the center of the window displays the viewfinder of the camera. You then have about one minute to start filming. After this delay, the screen will display “Standby”. If this happens, just tap anywhere on the blank area. The viewfinder will re-appear after about two seconds.
- When you are ready to film, tap **Menu** and then **Video**. This temporarily freezes the viewfinder. Wait about five seconds until the viewfinder returns to the active state.
- Press the Enter button to start filming.

### Ending a Video

- Depending on the video settings, the video camera will stop filming as explained below:
  - With a preset time limit (15 or 30 seconds), the video camera will stop filming automatically and close the video file after this time has elapsed. A down counter under the viewfinder will keep you informed of the remaining time as you film.
  - With no time limit, the video camera will film indefinitely. A counter under the viewfinder will tell you the current duration of the video. To stop filming and close the video file, press the Enter button again.



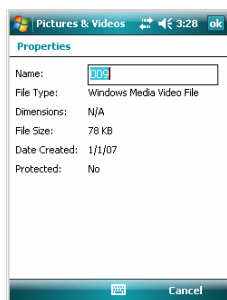
- At the end of the video shooting, a process time is indicated by a spinning hourglass.
- When the hourglass disappears, tap **ok** to turn off the camera and close the window. The video file you have created is now listed in the “My Pictures” folder.

### Playing Back a Video

- With the “My Pictures” folder open, tap on the desired video file. This will automatically launch the Windows Media player.
- Tap to close Windows Media player and return to the “My Pictures” folder.

### Renaming a Video

- With the “My Pictures” folder open, select the desired video file using the Scroll button.
- Tap **Menu** and then **Properties**.
- Rename the file and tap **ok**.



### Deleting a Video

- With the “My Pictures” folder open, select the desired video file using the Scroll button.
- Tap **Menu** and then **Delete**.
- Tap **Yes** to confirm deletion.

### Changing Picture Settings

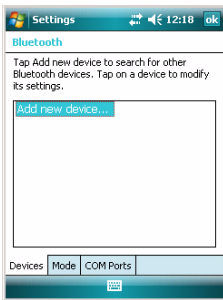
- Tap **Start, Programs** and **Pictures & Videos**. This opens the “My Pictures” folder.
- Tap **Camera**, or press the Enter button, to turn on the camera. Wait about five seconds until the center of the window displays the viewfinder of the camera.
- Tap **Menu**, then **Zoom**. Choose between **x1** (zoom1:1), **x2** (zoom2:1) and **x3** (zoom 3:1). The zoom setting impacts what you see on the viewfinder and therefore on the picture you take.
- Tap **Menu**, then **Resolution**. Choose one of the dimensions available (expressed in pixels). The resolution setting impacts the quality and size of the picture you take.
- Tap **Menu**, then **Mode**. Choose between **Normal** (one picture taken), **Burst** (five pictures taken at a one-second interval once you have pressed Enter) and **Timer** (picture taken 5 seconds after pressing Enter).



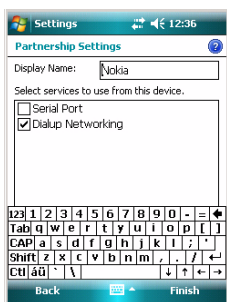
You can easily access the Internet from your MobileMapper 6 if you have a mobile phone available with Bluetooth and GPRS capabilities. To perform the connection to the Internet, you need to use the following three items:

- Bluetooth for a wireless connection to the mobile phone.
- Modem connection for a GPRS connection to your access provider.
- Internet Explorer to access the desired site and view its web pages.

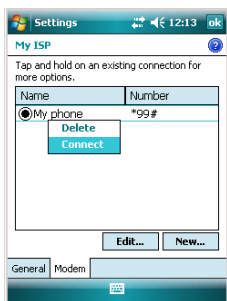
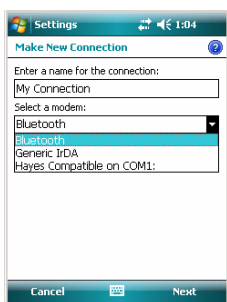
## Creating a Bluetooth Connection with a Mobile Phone



- Turn on your mobile phone and make sure its Bluetooth is enabled and visible. If necessary, refer to the phone manufacturer's documentation for more information on how to operate Bluetooth in this phone.
- Keep the mobile phone at a distance less than 10 meters from MobileMapper 6.
- Turn on MobileMapper 6.
- On MobileMapper 6, tap **Start**, then **Settings**.
- Tap on the **Connections** tab.
- Tap on the **Bluetooth** icon.
- Tap on the **Add New Device...** line in the list box. Bluetooth then starts searching.  
After the search sequence, the names of the detected units are listed on the screen. Your mobile phone should normally be part of the list.
- Tap on the name of your mobile phone and then tap **Next** (bottom right).
- Using the virtual keyboard, enter a passcode. This step is for pairing and securing the connection with the mobile phone.
- Tap **Next**. Wait until the spinning hourglass disappears.
- Whatever the model used, your mobile phone should now respond by asking you to confirm the Bluetooth connection to MobileMapper 6 and enter the same passcode. In the meantime, a spinning hourglass is shown on the MobileMapper 6 screen.



## Creating a GPRS Connection Via a Mobile Phone



- When the Bluetooth connection is established, the MobileMapper 6 screen lists the Bluetooth services available from your mobile phone. Make sure the **Dialup Networking** option is enabled.
- Tap **Finish** to complete the connection procedure. This takes you back to the Bluetooth Settings window on which you can now see your phone as a properly connected unit.
- Tap **ok** to close this window.

- In the Settings window, tap on the **Connections** icon.
- Tap on the upper **Add a new modem connection** hyperlink displayed on the screen.
- Name your GPRS connection (example: My phone)
- Select **Bluetooth** as the modem used for the GPRS connection.
- Tap **Next**.
- Tap on the name of your mobile phone
- Enter the call number exactly as it should be dialed (example: \*99#).
- Tap **Next**.
- Enter your user name and password, if any.
- Enter the domain name (APN) of your GPRS provider (example: a2bouygtel.com).
- Tap **Finish**. This takes you back to the Connections window.
- Tap on the **Manage existing connections** hyperlink now displayed just underneath the **Add a new modem connection** hyperlink you opened at the beginning of this procedure.
- Tap and hold on the connection name and then select **Connect**. This opens the Network Log On window on which you can see some of the connections parameters you have just entered.
- Tap **OK** (bottom left). Depending on the model used, the phone may now ask you to confirm the connection request. Respond accordingly. The GPRS connection is then active.

## Using Internet Explorer

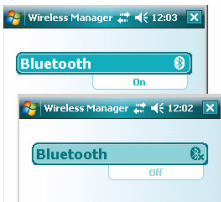
Once the GPRS connection is active, do the following to view a web page:

- Tap **Start**, then **Internet Explorer**.
- Just underneath the Internet Explorer title bar, type in the URL address of the web site you want to visit.
- Tap **Go** (bottom left). The screen should now display the home page of the chosen web site.

## Subsequent Uses

- Run Internet Explorer.
- Type in or select the URL address of the desired web site. This automatically opens the Network Log On window.
- Tap **OK** to re-activate the connection. When the connection is re-established, Internet Explorer will display the requested web page.

## Wireless Manager - Ending a GPRS Connection



In the Settings window is the Wireless Manager icon that gives full control over Bluetooth by allowing you to:

- Quickly enable (On) or disable (Off) Bluetooth. Just tap in the Bluetooth frame and then **Done** (bottom left).
- Access the Bluetooth settings through the Menu function.

Use this icon during a work session to turn off the Bluetooth connection and so put an end to the current GPRS connection. If you do that, don't forget to turn Bluetooth back on before running Internet Explorer for a new Internet access.

## Using Windows Mobile 6 Software

---

The operating system used in MobileMapper 6 is the standard Microsoft Windows Mobile version 6 software. For more information on how to use the different applications part of this software, you can also visit the following web site:  
<http://www.microsoft.com/windowsmobile/gettingstarted/default.aspx>

# IMPORTANT SAFETY WARNINGS

## Federal Communication Commission Interference Statement

This equipment has been tested and found to comply with the limits for a Class B digital device, pursuant to Part 15 of the FCC Rules. These limits are designed to provide reasonable protection against harmful interference in a residential installation. This equipment generates, uses and can radiate radio frequency energy and, if not installed and used in accordance with the instructions, may cause harmful interference to radio communications. However, there is no guarantee that interference will not occur in a particular installation. If this equipment does cause harmful interference to radio or television reception, which can be determined by turning the equipment off and on, the user is encouraged to try to correct the interference by one of the following measures:

- -Reorient or relocate the receiving antenna.
- -Increase the separation between the equipment and receiver.
- -Connect the equipment into an outlet on a circuit different from that to which the receiver is connected.
- -Consult the dealer or an experienced radio/TV technician for help.

This device complies with Part 15 of the FCC Rules. Operation is subject to the following two conditions: (1) This device may not cause harmful interference, and (2) this device must accept any interference received, including interference that may cause undesired operation.

FCC Caution: Any changes or modifications not expressly approved by the party responsible for compliance could void the user's authority to operate this equipment.

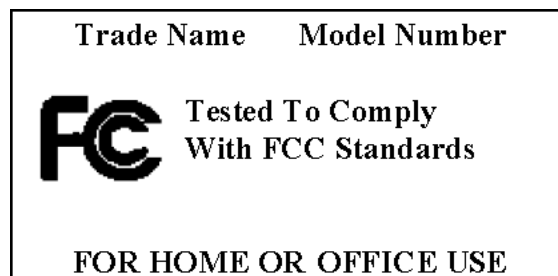
### IMPORTANT NOTE:

#### FCC Radiation Exposure Statement:

This equipment complies with FCC radiation exposure limits set forth for an uncontrolled environment. End users must follow the specific operating instructions for satisfying RF exposure compliance.

This transmitter must not be co-located or operating in conjunction with any other antenna or transmitter.

In order to maintain compliance with FCC regulations, shielded cables must be used with this equipment. Operation with non-approved equipment or unshielded cables is likely to result in interference to radio and TV reception. The user is cautioned that changes and modifications made to the equipment without the approval of manufacturer could void the user's authority to operate this equipment.



The Magellan Maestro must be installed and operated at a distance no closer than 8 inches (20 cm) from the user.

This Class B digital apparatus meets all requirements of the Canadian Interference-Causing Equipment Regulations.

Cet appareil numérique de la classe B respecte toutes les exigences du Règlement sur le matériel brouilleur du Canada.

# IMPORTANT SAFETY WARNINGS

## IC statement

Operation is subject to the following two conditions:

1. This device may not cause interference and
2. This device must accept any interference, including interference that may cause undesired operation of the device.

## IMPORTANT NOTE:

### IC Radiation Exposure Statement:

This equipment complies with IC radiation exposure limits set forth for an uncontrolled environment. End users must follow the specific operating instructions for satisfying RF exposure compliance.

This transmitter must not be co-located or operating in conjunction with any other antenna or transmitter.

The information provided in this document is subject to change without notice. Improvements and enhancements to the product may occur without any formal notification. Check the Magellan website ([www.magellanGPS](http://www.magellanGPS)) for product updates and additional information.