

After learning the basics of your TravelMate computer, let's get acquainted with the advanced features of your computer. In this chapter, you will learn how to add options, upgrade components for better performance, and customize your computer.

Expanding through options

Your TravelMate offers you a complete mobile computing experience.

Connectivity options

Ports allow you to connect peripheral devices to your computer as you would with a desktop PC. For instructions on how to connect different external devices to the computer, see your online guide for more details.

Fax/data modem

Some models have a built-in V.90 56Kbps software modem.



.....
Warning! This modem port is not compatible with digital phone lines. Plugging this modem into a digital phone line will damage the modem.

To use the fax/data modem port, connect a phone cable from the modem port to a telephone jack.

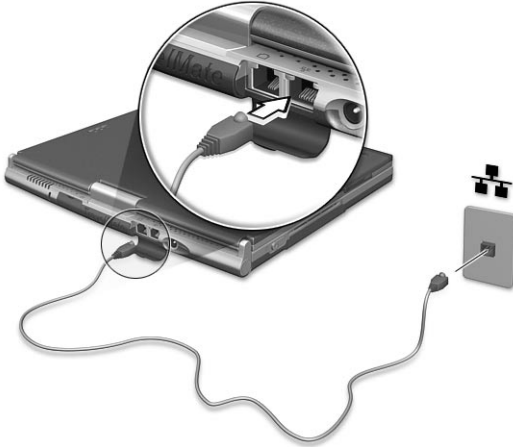


Start your communications software program. See your communications manual for instructions.

Built-in network feature

The built-in network feature allows you to connect your computer to an Ethernet-based (10/100 Mbps) network.

To use the network feature, connect an Ethernet cable from the network jack on the rear of the computer to a network jack or hub on your network.



Fast infrared

The computer's fast infrared (FIR) port allows you to do wireless data transfer with other IR-aware computers and peripherals such as infrared printers. The infrared port can transfer data at speeds of up to four megabits per second (Mbps) at a distance of up to one meter.

To use FIR, position two IR-aware devices such that their IR ports are no more than one meter apart and offset no more than 15 degrees.



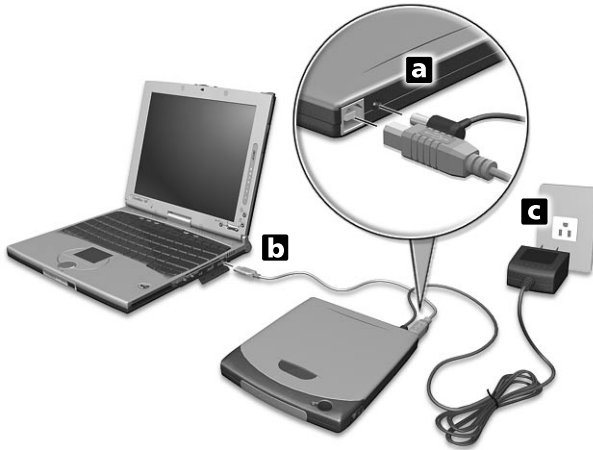
When the two computers are in position, simply begin the data transfer as you normally would. See your file transfer software for details.

Universal Serial Bus

The Universal Serial Bus (USB) port is a high-speed serial bus which allows you to connect and daisy-chain USB peripherals without taking up precious system resources. Your computer has two ports available.

Connecting your optical drive

Connect the AC adapter and the USB cable to the rear of the optical drive (a). Plug the other end of the USB cable to the computer (b). Connect the AC adapter to the power outlet (c).



IEEE 1394

The computer's fast IEEE 1394 port allows you to connect IEEE 1394 supported devices like a digital video camera.



See your video or digital camera's documentation for details.

PC Card slots

There is a type II CardBus PC Card slot found on the right side of the computer. This slot accepts credit-card-sized cards that enhance the usability and expandability of the computer. These cards should have a PC Card logo on them.

PC Cards (formerly PCMCIA) are add-on cards for portable computers, giving you expansion possibilities long afforded by desktop PCs. Popular type II cards include flash memory, SRAM, fax/data modem, LAN and SCSI cards. CardBus improves on the 16-bit PC card technology by expanding the bandwidth to 32 bits.



Note: Refer to your card's manual for details on how to install and use the card and its functions.

Inserting a PC Card

Insert the card into the slot and make the proper connections (e.g., network cable), if necessary. See your card manual for details.

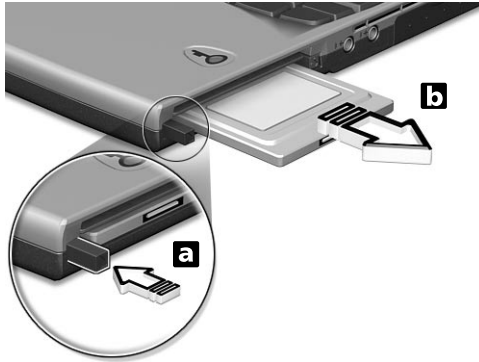


Ejecting a PC Card

Before ejecting a PC Card:

- 1** Exit the application using the card.
- 2** Left-click on the PC Card icon on the taskbar and stop the card operation.

- 3 Press the slot eject button (a) to pop out the eject button; then press it again (a) to eject the card (b).



Upgrade options

Your computer delivers superior power and performance. However, some users and the applications they use may demand more. This computer allows you to upgrade key components when you need increased performance.



.....
Note: Contact your authorized dealer if you decide to perform a key component upgrade.

Memory upgrade

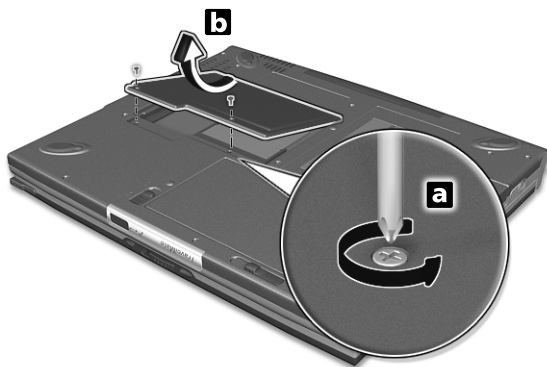
Memory is expandable to 256 MB, employing 128-MB PC-133 MHz industry standard soDIMMs (Small Outline Dual Inline Memory Modules). The computer supports SDRAM (Synchronous Dynamic Random Access Memory).

There are two memory slots on your computer, one of which is occupied by standard memory. You can upgrade memory by installing a memory module into the available slot.

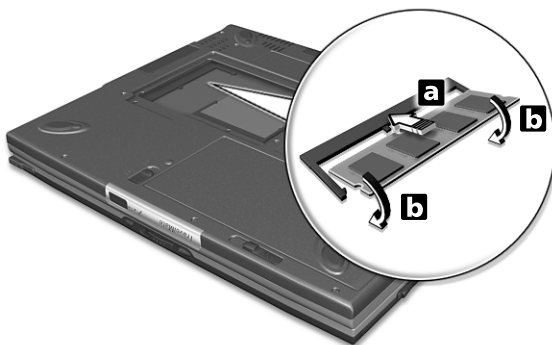
Installing memory

Follow these steps to install memory:

- 1 Turn off the computer, unplug the AC adapter (if connected) and remove the battery pack. Then turn the computer over to access its base.
- 2 Remove the screw (a) from the memory cover; then lift up and remove the memory cover (b).



- 3 Insert the memory module diagonally into the slot (a), then gently press it down (b) until it clicks into place.



- 4 Replace the memory cover and secure it with the screw.

The computer automatically detects and reconfigures the total memory size.

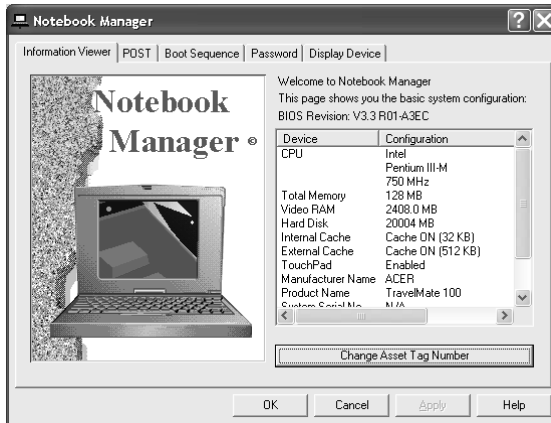
Notebook Manager

The computer has a built-in system setup program called Notebook Manager. The Windows-based Notebook Manager allows you to set passwords, the startup sequence of the drives, and power management settings. It also shows current hardware configurations.

To start the Notebook Manager, press **Fn-F2** or follow these steps:

- 1 Click on **Start, Programs**, then **Notebook Manager**.
- 2 Select the **Notebook Manager** application to run the program.

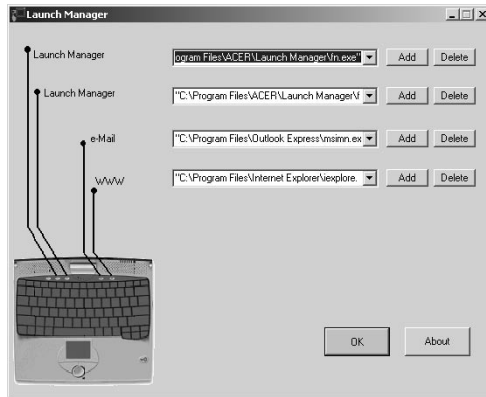
See your online guide for more information.




Launch Manager

Launch Manager allows you to set the four launch keys located above the keyboard. See "Launch Keys" on page 25 for the location of the launch key.

You can access the Launch Manager by clicking on **Start, Programs**, and then **Launch Manager** to start the application.



Launch Manager and 802.11b Wireless LAN

By default, the 802.11b wireless LAN is set to “Always Off”. You can manually switch on the 802.11b wireless LAN by pressing the  button. Manually turning on 802.11b wireless LAN does not change this default setting which is re-enabled when you restart your computer. You have to go to the BIOS Utility during POST to set it to “Always On”, so that when you turn on your computer, 802.11b wireless LAN will be on.



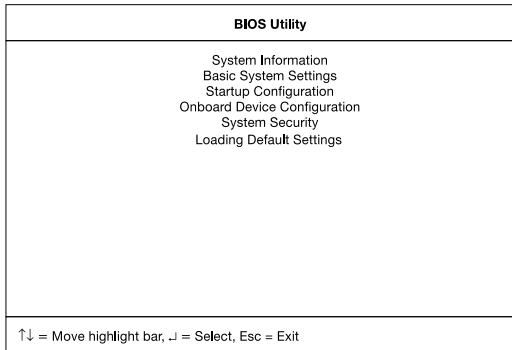
Note: The built-in Ethernet port is automatically disabled when the 802.11B Wireless LAN is enabled. You have to disable the 802.11B Wireless LAN to be able to use the built-in Ethernet port.

BIOS Utility

The BIOS Utility is a hardware configuration program built into your computer’s BIOS (basic input/output system).

Your computer is already properly configured and optimized, and you do not need to run this utility. However, if you encounter configuration problems, you may need to run it.

To activate the BIOS Utility, press **F2** during the POST (power-on self-test) while the TravelMate logo is being displayed. See your online guide for more information.



3 Troubleshooting your computer

This chapter instructs you on how to deal with common system problems. Read it before calling a technician if a problem occurs. Solutions to more serious problems require opening up the computer. Do not attempt to open the computer by yourself. Contact your dealer or an authorized service center for assistance.

key link: www.acersupport.com

Frequently-asked questions

The following is a list of possible situations that may arise during the use of your computer. Easy answers and solutions are provided for each one.

I pressed the power switch and opened the display, but the computer does not start or boot-up.

Look at the Power indicator (refer to “Indicators” on page 18):

- If it is not lit, no power is being applied to the computer. Check the following:
 - If you are running on battery power, it may be low and unable to power the computer. Connect the AC adapter to recharge the battery pack.
 - Make sure that the AC adapter is plugged in properly to the computer and to the power outlet.
- If it is lit, check the following:
 - Is a non-bootable (non-system) diskette in the floppy drive? Remove or replace it with a system diskette and press **Ctrl-Alt-Del** to restart the system.
 - The operating system files may be damaged or missing. Insert the startup disk you created during Windows setup into the floppy drive and press **Ctrl-Alt-Del** to restart the system. This will diagnose your system and make necessary fixes.

Nothing appears on the screen.

The computer’s power management system automatically blanks the screen to save power. Press any key to turn the display back on.

If pressing a key does not turn the display back on, three things might be the cause:

- The brightness level might be too low. Press **Fn**→ (increase) and **Fn**← (decrease) to adjust the brightness level.
- The display device might be set to an external monitor. Press the display toggle hot key **Fn-F5** to toggle the display back to the computer.
- If the Sleep indicator is lit, the computer is in Sleep mode. Press, slide, and release the power switch to resume.

Image is not full-screen.

Make sure that the resolution is set to 1024x768 which the system supports natively. Right-click on your Windows desktop and select Properties to bring up the **Display Properties** dialog box. Then click on the Settings tab to make sure the resolution is set to the appropriate resolution. Resolutions lower than the specified resolution are not full-screen on the computer or on an external monitor.

No audio is heard from the computer.

Check the following:

- The volume may be muted. In Windows, look at the volume control (speaker) icon on the taskbar. If it is crossed-out, click on the icon and deselect the Mute option.
- The speakers may be turned off. Press **Fn-F8** to turn the speakers on (this hot key also turns the speakers off).
- The volume level may be too low. In Windows, look at the volume control icon on the taskbar. You can also use the volume control buttons to adjust the volume. See "Hot keys" on page 22.
- If headphones, earphones or external speakers are connected to the line-out port on the computer's right panel, the internal speakers automatically turn off.

The keyboard does not respond.

Try attaching an external keyboard to the USB connector on the computer's rear. If it works, contact your dealer or an authorized service center as the internal keyboard cable may be loose.

The infrared port does not work.

Check the following:

- Make sure that the infrared ports of the two devices are facing each other (+/- 15 degrees) a maximum of 1 meter apart.
- Make sure that there is a clear path between the two infrared ports. Nothing should be blocking the ports.
- Make sure that you have the appropriate software running on both devices (for file transfers) or that you have the appropriate drivers (for printing to an infrared printer).
- During the POST, press **F2** to access the BIOS Utility and verify that

the infrared port is enabled.

- Make sure that both devices are IrDA-compliant.

I want to set up my location to use the internal modem.

To properly use your communications software (e.g., HyperTerminal), you need to set up your location:

- 1** Click on **Start, Settings, Control Panel**.
- 2** Double-click on **Modems**.
- 3** Click on **Dialing Properties** and begin setting up your location.

Refer to the Windows manual.

Troubleshooting tips

This notebook computer incorporates an advanced design that delivers onscreen error message reports to help you solve problems.

- If the system reports an error message or an error symptom occurs, see “Error messages” on page 65.

Error messages

If you receive an error message, note the message and take the corrective action. The following table lists the error messages in alphabetical order together with the recommended course of action.

Error Messages	Corrective Action
CMOS Battery Bad	Contact your dealer or an authorized service center.
CMOS Checksum Error	Contact your dealer or an authorized service center.
Disk Boot Failure	Insert a system (bootable) diskette into the floppy drive (A:), then press Enter to reboot.
Diskette Drive Controller Error or No Controller Present	Contact your dealer or an authorized service center.
Diskette Drive Error	Contact your dealer or an authorized service center.
Diskette Drive Type Mismatch	Press F2 (during POST) to enter the BIOS Utility; then press Esc to exit and reconfigure the computer.
Equipment Configuration Error	Press F2 (during POST) to enter the BIOS Utility; then press Esc to exit and reconfigure the computer.
Hard Disk 0 Error	Contact your dealer or an authorized service center.
Hard Disk 0 Extended Type Error	Contact your dealer or an authorized service center.
I/O Parity Error	Contact your dealer or an authorized service center.
Insert system diskette and press <Enter> key to reboot	Insert a system (bootable) diskette into the floppy drive (A:), then press Enter to reboot.

Error Messages	Corrective Action
Keyboard Error or No Keyboard Connected	Contact your dealer or an authorized service center.
Keyboard Interface Error	Contact your dealer or an authorized service center.
Memory Size Mismatch	Press F2 (during POST) to enter the BIOS Utility; then press Esc to exit and reconfigure the computer.
Missing operating system	Press F2 (during POST) to enter the BIOS Utility; then press Esc to exit and reconfigure the computer.
Non-system disk or disk error. Replace and strike any key when ready.	Insert a system (bootable) diskette into the floppy drive (A:), then press Enter to reboot.
Pointing Device Error	Contact your dealer or an authorized service center.
Pointing Device Interface Error	Contact your dealer or an authorized service center.
Protected Mode Test Fail	Contact your dealer or an authorized service center.
RAM BIOS Bad	Contact your dealer or an authorized service center.
RAM Parity Error	Contact your dealer or an authorized service center.
Real-Time Clock Error	Press F2 (during POST) to enter the BIOS Utility; then press Esc to exit and reconfigure the computer.
Video RAM BIOS Bad	Contact your dealer or an authorized service center.

If you still encounter problems after going through the corrective measures, please contact your dealer or an authorized service center for assistance. Some problems may be solved using the BIOS Utility.

Requesting service

International Traveler's Warranty (ITW)

Your computer is backed by an International Traveler's Warranty (ITW) that gives you security and peace of mind when traveling. Our worldwide network of service centers are there to give you a helping hand.

An ITW passport comes with your computer. This passport contains all you need to know about the ITW program. A list of available, authorized service centers are in this handy booklet. Read this passport thoroughly.

Always have your ITW passport on hand, especially when you travel to receive the benefits from our support centers. Place your proof-of-purchase in the flap located inside the front cover of the ITW passport.

If the country you are traveling in does not have an Acer-authorized ITW service site, you can still get in contact with our offices worldwide.

There are three ways to access Acer for technical support and information:

- Internet service worldwide, visit <http://www.acersupport.com/>
- Telephone support in the United States and Canada, call 1-800-816-2237
- Technical support numbers in various countries

You can view a list of technical support numbers by following these steps:

- 1** Click on **Start, Settings, Control Panel**.
- 2** Double-click on **System**.
- 3** Click on the **Support Information** button.

Before you call

Please have the following information available when you call Acer for online service, and please be at your computer when you call. With your support, we can reduce the amount of time a call takes and help solve your problems efficiently.

If there are error messages or beeps reported by your computer, write them down as they appear on the screen (or the number and sequence in the case of beeps).

If you haven't registered your notebook computer, you will be required to register during your first call to Acer.

You are required to provide the following information:

Name: _____

Address: _____

Telephone number: _____

Machine and model type: _____

Serial number: _____

Date of purchase: _____

Appendix A

Specifications

This appendix lists the general specifications of your computer.

Microprocessor

- Mobile Intel® Pentium® III Processor-M with 512 KB level 2 cache featuring the new Enhanced Intel® SpeedStep™ technology

Memory

- Main memory expandable to 256 MB support 64-bit memory bus
- Dual 144-pin soDIMM socket supporting PC-133 SDRAM (Synchronous Dynamic Random Access Memory)
- 512 KB Flash ROM BIOS

Data storage

- One external USB CD-ROM drive
- One high-capacity, Enhanced-IDE hard disk

Display and video

- 10.4" Thin-Film Transistor (TFT) liquid-crystal display (LCD) displaying 24-bit true-color at 1024x768 eXtended Graphics Array (XGA) resolution
- 8 MB Video DRAM
- 3D capabilities
- Simultaneous LCD and CRT display support
- Dual display capability
- Tablet mode for LCD panel (Rotatable display)

Audio

- 16-bit AC' 97 PCI stereo audio with built-in wavetable synthesizer
- Built-in speaker and microphone
- Sound Blaster Pro and Windows Sound System-compatible
- Separate audio ports for headphone-out and line-in devices

Keyboard and pointing device

- Acer Finetouch keyboard
- Ergonomically-centered touchpad pointing device with scroll function
- Electromagnetic resonate (EMR) stylus for pen-based input

I/O ports

- Built-in:
 - One type II/I CardBus PC slot
 - One Smart Card interface socket
 - One RJ-11 phone jack
 - One RJ-45 LAN jack
 - One DC-in jack (AC adapter)
 - One external monitor port
 - One speaker/headphone-out jack
 - One line-in jack
 - One FIR wireless communications port (IrDA-compliant)
 - Two USB ports
 - One IEEE 1394 port

Weight and dimensions

- 3.2 lbs (1.40 kg)
- 251 (W) x 208 (D) x 25.4/29.4 (H)mm

Environment

- Temperature
 - Operating: 10°C ~ 35°C
 - Non-operating: -20°C ~ 60°C
- Humidity (non-condensing)
 - Operating: 20% ~ 80% RH
 - Non-operating: 20% ~ 80% RH

System

- Microsoft Windows XP tablet PC edition
- ACPI support
- DMI 2.0-compliant
- LDCM 6.0 support

Power

- Battery pack
 - 24 WattHour Li-Ion main battery pack
 - Smart battery management technology
 - 1.5-hour rapid charge/2.5-hour charge-in-use
- AC adapter
 - 60-Watt
 - Auto sensing 100~240Vac, 50~60Hz

Options

- 128-MB memory upgrade module
- Higher-capacity hard disk drive
- InviLink access point
- Additional AC adapter
- Additional Li-Ion battery pack
- USB floppy disk drive
- Infrared (IR) remote control
- External battery charger
- Full size EMR pen with eraser
- EMR stylus

Appendix B
Notices

This appendix lists the general notices of your computer.

FCC notice

This device has been tested and found to comply with the limits for a Class B digital device pursuant to Part 15 of the FCC Rules. These limits are designed to provide reasonable protection against harmful interference in a residential installation. This device generates, uses, and can radiate radio frequency energy and, if not installed and used in accordance with the instructions, may cause harmful interference to radio communications.

However, there is no guarantee that interference will not occur in a particular installation. If this device does cause harmful interference to radio or television reception, which can be determined by turning the device off and on, the user is encouraged to try to correct the interference by one or more of the following measures:

- Reorient or relocate the receiving antenna
- Increase the separation between the device and receiver
- Connect the device into an outlet on a circuit different from that to which the receiver is connected
- Consult the dealer or an experienced radio/television technician for help

Notice: Shielded cables

All connections to other computing devices must be made using shielded cables to maintain compliance with FCC regulations.

Notice: Peripheral devices

Only peripherals (input/output devices, terminals, printers, etc.) certified to comply with the Class B limits may be attached to this equipment. Operation with non-certified peripherals is likely to result in interference to radio and TV reception.

Caution

Changes or modifications not expressly approved by the manufacturer could void the user's authority, which is granted by the Federal Communications Commission, to operate this computer.

Use conditions

This part complies with Part 15 of the FCC Rules. Operation is subject to the following two conditions: (1) this device may not cause harmful interference, and (2) this device must accept any interference received, including interference that may cause undesired operation.

Notice: Canadian users

This Class B digital apparatus meets all requirements of the Canadian Interference-Causing Equipment Regulations.

Remarque à l'intention des utilisateurs canadiens

Cet appareil numérique de la classe B respecte toutes les exigences du Règlement sur le matériel brouilleur du Canada.

Modem notices

FCC

This equipment complies with Part 68 of the FCC rules. Located on the bottom side of the modem is a label that contains, among other information, the FCC Registration Number and Ringer Equivalence Number (REN) for this equipment. Upon request, you must provide this information to your telephone company.

If your telephone equipment causes harm to the telephone network, the telephone company may discontinue your service temporarily. If possible, they will notify you in advance. But, if advance notice is not practical, you will be notified as soon as possible. You will also be informed of your right to file a complaint with the FCC.

Your telephone company may make changes in its facilities, equipment, operations, or procedures that could affect the proper functioning of your equipment. If they do, you will be notified in advance to give you an opportunity to maintain uninterrupted telephone service.

If this equipment should fail to operate properly, disconnect the equipment from the phone line to determine if it is causing the problem. If the problem is with the equipment, discontinue use and contact your dealer or vendor.

TBR 21

This equipment has been approved [Council Decision 98/482/EC - "TBR 21"] for pan-European single terminal connection to the Public Switched Telephone Network (PSTN). However, due to differences between the individual PSTNs provided in different countries, the approval does not, of itself, give an unconditional assurance of successful operation on every PSTN termination point. In the event of problems, you should contact your equipment supplier in the first instance.

Important safety instructions

Read these instructions carefully. Save these instructions for future reference.

- 1** Follow all warnings and instructions marked on the product.
- 2** Unplug this product from the wall outlet before cleaning. Do not use liquid cleaners or aerosol cleaners. Use a damp cloth for cleaning.
- 3** Do not use this product near water.
- 4** Do not place this product on an unstable cart, stand, or table. The product may fall, causing serious damage to the product.
- 5** Slots and openings in the cabinet and the back or bottom are provided for ventilation; to ensure reliable operation of the product and to protect it from overheating, these openings must not be blocked or covered. The openings should never be blocked by placing the product on a bed, sofa, rug, or other similar surface. This product should never be placed near or over a radiator or heat register, or in a built-in installation unless proper ventilation is provided.
- 6** This product should be operated from the type of power indicated on the marking label. If you are not sure of the type of power available, consult your dealer or local power company.
- 7** Do not allow anything to rest on the power cord. Do not locate this product where persons will walk on the cord.
- 8** If an extension cord is used with this product, make sure that the total ampere rating of the equipment plugged into the extension cord does not exceed the extension cord ampere rating. Also, make sure that the total rating of all products plugged into the wall outlet does not exceed the fuse rating.
- 9** Never push objects of any kind into this product through cabinet slots as they may touch dangerous voltage points or short out parts that could result in a fire or electric shock. Never spill liquid of any kind on the product.
- 10** Do not attempt to service this product yourself, as opening or removing covers may expose you to dangerous voltage points or other risks. Refer all servicing to qualified service personnel.
- 11** Unplug this product from the wall outlet and refer servicing to qualified service personnel under the following conditions:
 - a** When the power cord or plug is damaged or frayed
 - b** If liquid has been spilled into the product
 - c** If the product has been exposed to rain or water
 - d** If the product does not operate normally when the operating instructions are followed. Adjust only those controls that are covered by the operating instructions since improper adjustment of other controls may result in damage and will often require extensive work by a qualified technician to restore the product to normal condition.
 - e** If the product has been dropped or the cabinet has been damaged

- f** If the product exhibits a distinct change in performance, indicating a need for service.
- 12** Replace the battery with the same type as the product's battery we recommend. Use of another battery may present a risk of fire or explosion.
- 13** Warning! Batteries may explode if not handled properly. Do not disassemble or dispose of them in fire. Keep them away from children and dispose of used batteries promptly.
- 14** Use only the proper type of power supply cord set (provided in your accessories box) for this unit. It should be a detachable type: UL listed/CSA certified, type SPT-2, rated 7A 125V minimum, VDE approved or its equivalent. Maximum length is 15 feet (4.6 meters).

Laser compliance statement

The CD drive used with this computer is a laser product. The CD drive's classification label (shown below) is located on the drive.

CLASS 1 LASER PRODUCT

CAUTION: INVISIBLE LASER RADIATION WHEN OPEN. AVOID EXPOSURE TO BEAM.

APPAREIL A LASER DE CLASSE 1 PRODUIT

LASERATTENTION: RADIATION DU FAISCEAU LASER INVISIBLE EN CAS D'OUVERTURE. EVITER TOUTE EXPOSITION AUX RAYONS.

LUOKAN 1 LASERLAITE LASER KLASSE 1

VORSICHT: UNSICHTBARE LASERSTRAHLUNG, WENN ABDECKUNG GEÖFFNET NICHT DEM STRAHL AUSSETZEN

PRODUCTO LÁSER DE LA CLASE I

ADVERTENCIA: RADIACIÓN LÁSER INVISIBLE AL SER ABIERTO. EVITE EXPONERSE A LOS RAYOS.

ADVARSEL: LASERSTRÅLING VEDÅBNING SE IKKE IND I STRÅLEN.

VARO! LAVATTAESSA OLET ALTTINA LASERSÄTEILYLLE.

VARNING: LASERSTRÅLNING NÅR DENNA DEL ÄR ÖPPNAD ÄLÅ TUIJOTA SÄTEESEENSTIRRA EJ IN I STRÅLEN

VARNING: LASERSTRÅLNING NAR DENNA DEL ÄR ÖPPNADSTIRRA EJ IN I STRÅLEN

ADVARSEL: LASERSTRÅLING NAR DEKSEL ÅPNESSTIRR IKKE INN I STRÅLEN

Lithium battery statement

CAUTION

Danger of explosion if battery is incorrectly replaced. Replace only with the

same or equivalent type recommended by the manufacturer. Dispose of used batteries according to local regulations. Recycle if at all possible.

ADVARSEL!

Lithiumbatteri - Eksplosjonsfare ved feilagtig håndtering. Udsiftning må kun ske med batteri af samme fabrikat og type. Léver det brugte batteri tilbage til leverandøren.

ADVARSEL

Eksplosjonsfare ved feilaktig skifte av batteri. Benytt samme batteritype eller en tilsvarende type anbefalt av apparatfabrikanten. Brukte batterier kasseres i henhold til fabrikantens instruksjoner.

VARNING

Explosionsfara vid felaktigt batteribyte. Använd samma batterityp eller en ekvivalent typ som rekommenderas av apparattillverkaren. Kassera använt batteri enligt fabrikantens instruktion.

VAROITUS

Päristo voi räjähtää, jos se on virheellisesti asennettu. Vaihda paristo ainoastaan laitevalmistajan suosittelemaan tyyppiin. Hävitä käytetty paristo valmistajan ohjeiden mukaisesti.

VORSICHT!

Explosionsgefahr bei unsachgemäßen Austausch der Batterie Ersatz nur durch denselben oder einem vom Hersteller empfohlenem ähnlichen Typ. Entsorgung gebrauchter Batterien nach Angaben des Herstellers.

Year 2000 compliance statement

The TravelMate C100 series notebook computer carries the "Hardware NSTL Tested Year 2000 Compliant" logo, which certifies that this model has been tested by NSTL using the YMark2000 test, and has been found to meet NSTL's standards for Year 2000 hardware compliance.



LCD pixel statement

The LCD unit is produced with high-precision manufacturing techniques. Nevertheless, some pixels may occasionally misfire or appear as black or colored dots. This has no effect on the recorded image and does not constitute a malfunction.

A-Tick notice

For safety reasons, only connect headsets with a telecommunications compliance label. This includes customer equipment previously labelled permitted or certified.

The unit shall be connected to Telecommunication Network through a line cord which meets the requirements of ACA Technical Standard TS008.

Australian approved mains cord set shall be used with the equipment.

Index

A

- AC adapter
 - caring for vii
- audio 31
 - adjusting the volume 31
 - troubleshooting 62

B

- battery pack
 - caring for vii
 - charging indicator 18
- BIOS utility 57
- brightness
 - hotkeys 24

C

- caps lock 20
 - on indicator 18
- care
 - AC adapter vii
 - battery pack vii
 - computer vii
- cleaning
 - computer viii
- computer
 - bringing to meetings 34
 - caring for vii
 - cleaning viii
 - disconnecting 33
 - features 3, 16
 - indicators 18
 - keyboards 20
 - moving around 33
 - on indicator 18
 - performance 16
 - security 38
 - setting up a home office 35
 - taking home 34
 - traveling internationally 36
 - traveling on local trips 36
 - troubleshooting 60
 - turning off vi
 - Wireless Communication indicator 18

- Configuring tablet mode buttons 5
- connections
 - network 50
- contrast
 - hotkeys 24

D

- display
 - hotkeys 23
 - troubleshooting 61, 62

E

- email checking function 26
- error messages 65
- Euro 24

F

- FAQ 61
- front view 3

H

- hard disk 30
- help
 - online manual iv
 - online services 67
- Hibernation mode
 - hotkey 23
- hotkeys 22

I

- indicator lights 18
- infrared 50
 - troubleshooting 62
- ITW. See warranty

K

- keyboard 20
 - embedded numeric keypad 21
 - hotkeys 22
 - lock keys 20
 - troubleshooting 62
 - Windows keys 22

L

- LEDs 18

M

- media access
 - on indicator 18
- memory

- installing 54– 55
- upgrading 54
- messages
 - error 65
- modem 49
- N**
- network 50
- Notebook Manager 56
 - hotkey 23
- notice
 - year 2000 compliance 81
- num lock 20
 - on indicator 18
- numeric keypad
 - embedded 21
 - num lock 21
- O**
- online services 67
- options
 - memory upgrade 54
- P**
- password 44
 - types 44
- PC Card 53
 - ejecting 53
 - inserting 53
- ports 49
- POST (power-on self-test) 58
- problems
 - display 61, 62
 - infrared 62
 - keyboard 62
 - startup 61
 - troubleshooting 60
- Q**
- questions
 - setting location for modem use 63
- R**
- Rotating the display in tablet mode 4
- S**
- safety
 - CD-ROM 80

- FCC notice 77
- general instructions 78
- lithium battery 80
- modem notices 78
- scroll lock 20
- security
 - keylock 38
 - passwords 44
 - smart card 38
- service
 - when to call viii
- SmartCard 38
 - PlatinumKey 39
 - PlatinumPAS 38
 - PlatinumSecure 38
 - PlatinumSecure options 41
- speakers
 - hotkey 24
 - troubleshooting 62
- specifications 70
- Standby mode
 - hotkey 23
 - status indicator 18
- status indicators 18
- storage 30
 - hard disk 30
- support
 - information 67
- T**
- Tablet mode button
 - enter button 4
 - function key button 5
 - page down button 4
 - page up button 4
 - windows security button 5
- touchpad 28
 - hotkey 24
 - using 28– 29
- travel
 - international flights 36
 - local trips 36
- troubleshooting 60
 - tips 64
- U**
- universal serial bus (USB) 51
- Using computer in tablet mode 11

V

view
 front 6
 left 6
 rear 8
 right 7
volume

adjusting 31

W

warranty
 International Traveler's Warrant-
 ty 67
Windows keys 22

