

*** USER'S MANUAL ***

FCC ID : SRKWPSPT100

FCC label requirement

Please note :

- (1) The device must be designed for mobile or fixed operation only. (portable is not permitted and requires separate approval)
- (2) The device bear a label with FCC ID:SRKWPSPT100 attached on the bottom of the device and a second label with FCC ID:UDV-0606020060002 attached on RF module inside the device .
- (3) FCC label shown as :

FCC ID: SRKWPSPT100 Contains FCC ID:UDV-0606020060002
--

FCC RF exposure requirement

To allow compliance with RF exposure requirement for the device which maximum output power at antenna input terminal:

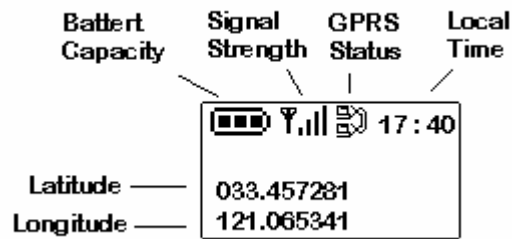
- (a) For GSM 850MHz / GSM 900MHz band is 33dBm (= 2W) , the maximum antenna gain with cable is 0.5 dBi .
- (b) For DCS1800MHz / PCS1900MHz band is 30dBm (= 1W) ,the maximum antenna gain with cable is 1.0 dBi .

The device must be installed to provide a separation distance of at least 20cm from all persons ' head or body ,and must not be co-located or operating in conjunction with any other antenna or transmitter .

System Modes

1. Normal Mode :

A. Normal :



Power Button Long Press : Power OFF.

Power Button Short Press : Switch To GPS Info. Mode.

Button 1 Long Press : Parking ON/OFF

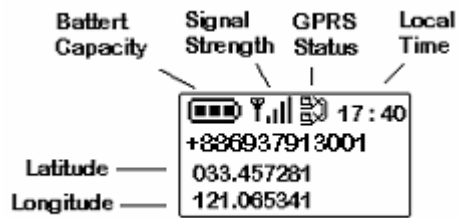
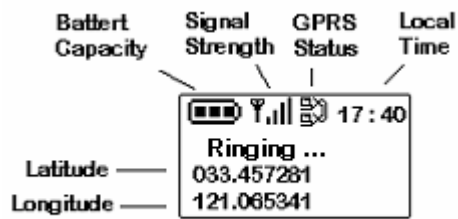
Button 2 Long Press : Dial Emergency Phone 1 (Set Up By Utility).

Button 3 Long Press : Dial Emergency Phone 2 (Set Up By Utility).

Button 4 Long Press : Dial Emergency Phone 3 (Set Up By Utility).

Button 5 Long Press : Send Emergency SMS (Set Up By Utility).

B. When Ring In :



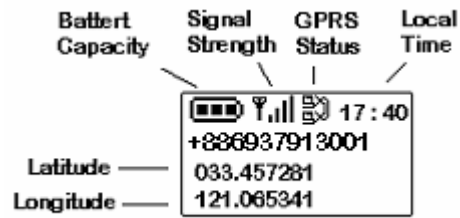
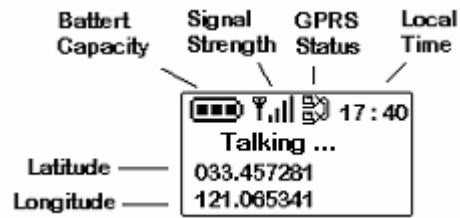
Power Button Long Press : Power OFF.

Power Button Short Press : Pick Up Phone.

Button 1~4 Short/Long Press: Pick Up Phone.

Button 5 Short/Long Press: Hand Up Phone.

C. When Talking :



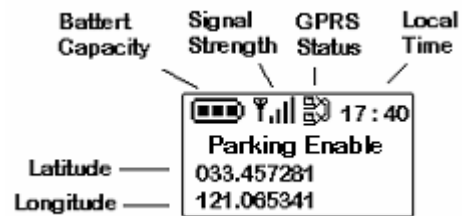
Power Button Long Press : Power OFF.

Button 3 Short Press: Volume Up.

Button 4 Short Press: Volume Down.

Button 5 Short Press: Hand Up Phone.

C. When Parking Enable:



Power Button Long Press : Power OFF.

Button 3 Short Press: Volume Up.

Button 4 Short Press: Volume Down.

Button 5 Short Press: Hand Up Phone.

2. GPS Information Mode :

No Fix :

		GPS NO Fix
Year/Month/Day	06/12/14	NO FIX
Hour:Min:Sec	17:20:30	
Latitude	033.457281	
Longitude	121.065341	

Fix :

Year/Month/Day	06/12/14	96KM	Speed (KM/H)
Hour:Min:Sec	17:20:30	270H	Heading
Latitude	033.457281	15M	Altitude
Longitude	121.065341	4S	Satallites

A. Normal

Power Button Long Press : Power OFF.

Power Button Short Press : Switch To Dial Phone Mode.

Button 2 Long Press : Dial Emergency Phone 1 (Set Up By Utility).

Button 3 Long Press : Dial Emergency Phone 2 (Set Up By Utility).

Button 4 Long Press : Dial Emergency Phone 3 (Set Up By Utility).

B. When Ring In :

Power Button Long Press : Power OFF.

Power Button Short Press : Pick Up Phone.

Button 1~4 Short/Long Press: Pick Up Phone.

Button 5 Short/Long Press: Hand Up Phone.

3. Dial Phone Mode :

Dial Phone Mode
093700
0 1 2 3 4 5 6 7 8 9

Power Button Long Press : Power OFF.

Power Button Short Press : Switch To Normal Mode.

Button 1 Short Press : Select Current Number To Dial List.

Button 2 Short Press : Clear Current Number To Dial List.

Button 3 Short Press : Right Shift Number .

Button 4 Short Press : Lift Shift Number .

Button 5 Long Press : Dial Out.

Note : System will go back to normal mode after 10 sec without any button press

Utility Setting

1. Unit Setting

Personal Tracer PT100 (COM2)

Basic Setting | Phone Setting | Other

Unit Setting

Unit ID : 1020000082

Pin Code : 0

Time Zone : +8

Sync. Timer[Sec] : 60

GPRS Setting

GPRS User Name :

GPRS Password :

GPRS APN : INTERNET

Internet Setting

Host Address : 220.130.174.160

Host Port : 4100

Host DNS : 168.95.1.1

Clear

Read Setting | Save Setting | Exit

Unit ID : The identification number of the unit. The default unit ID is 1010000001.

Pin Code : The PIN code of the GSM/GPRS SIM card. (Max. 4 digits)

Sync. Timer : Synchronization message sending interval in seconds.(10 ~ 65535 seconds) 0: Only one sync message be transmitted when the unit connected to the server.

GPRS APN : GPRS Access Point Name. (Max. 35 characters)

GPRS User Name : GPRS login user name (Max. 15 characters)

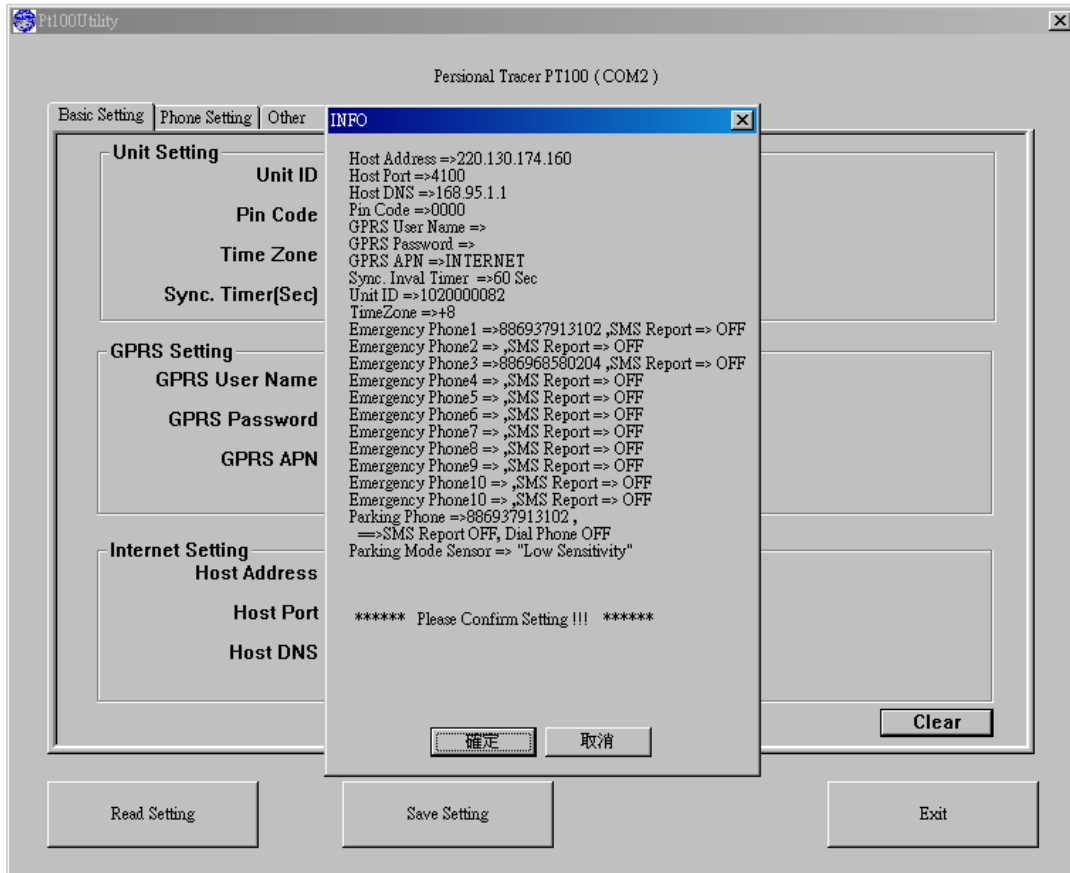
GPRS Password : GPRS login password (Max. 15 characters)

Host Address : The base station static WAN IP/DNS address. (Max. 30 characters)

Host Port : The base station application port number of the UDP/TCP

Host DNS : DNS IP address.

1-1. Save Setting



2. Phone Setting

Pt100Utility

Personal Tracer PT100 (COM2)

Basic Setting | **Phone Setting** | Other

Quick Dial Setting

Phone 1 (Button 2) :	<input type="text" value="886937913001"/>	<input type="checkbox"/> SMS Report
Phone 2 (Button 3) :	<input type="text" value="886937913002"/>	<input checked="" type="checkbox"/> SMS Report
Phone 3 (Button 4) :	<input type="text" value="886937913003"/>	<input type="checkbox"/> SMS Report

Emergency SMS Report Setting

SMS Phone 4 :	<input type="text" value="886937913004"/>	<input type="checkbox"/> SMS Report
SMS Phone 5 :	<input type="text" value="886937913005"/>	<input type="checkbox"/> SMS Report
SMS Phone 6 :	<input type="text" value="886937913006"/>	<input type="checkbox"/> SMS Report
SMS Phone 7 :	<input type="text" value="886937913007"/>	<input checked="" type="checkbox"/> SMS Report
SMS Phone 8 :	<input type="text" value="886937913008"/>	<input type="checkbox"/> SMS Report
SMS Phone 9 :	<input type="text" value="886937913009"/>	<input type="checkbox"/> SMS Report
SMS Phone 10 :	<input type="text" value="886937913010"/>	<input checked="" type="checkbox"/> SMS Report

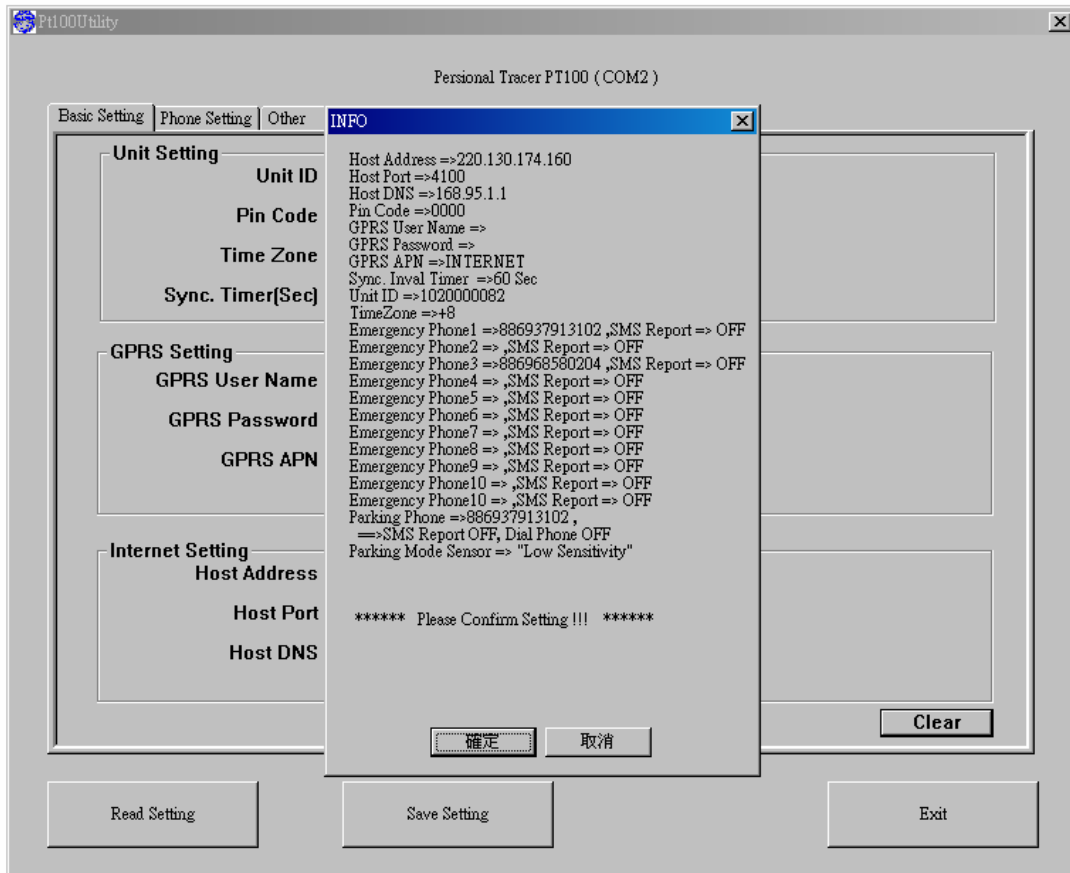
Parking Setting

Parking Phone :	<input type="text" value="886937913011"/>	<input checked="" type="checkbox"/> SMS Report	<input checked="" type="checkbox"/> Dial Phone
<input type="radio"/> High Sensitivity <input type="radio"/> Medium Sensitivity <input checked="" type="radio"/> Low Sensitivity			

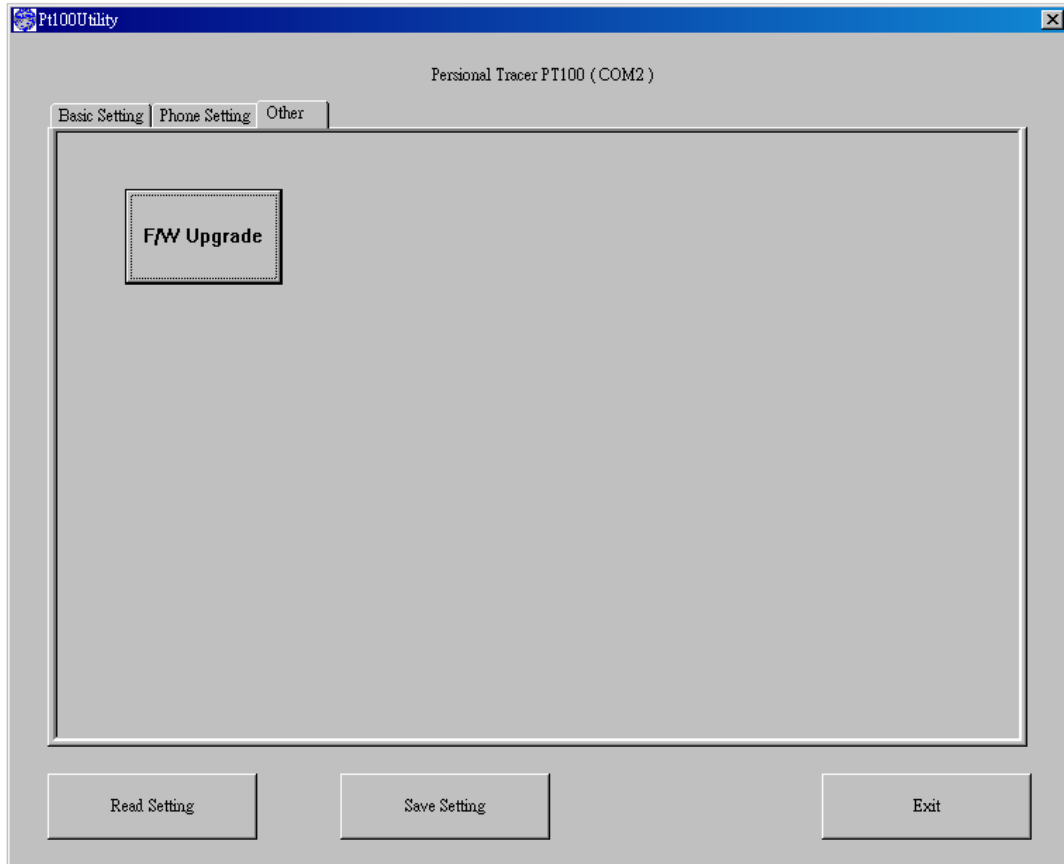
Clear

Read Setting Save Setting Exit

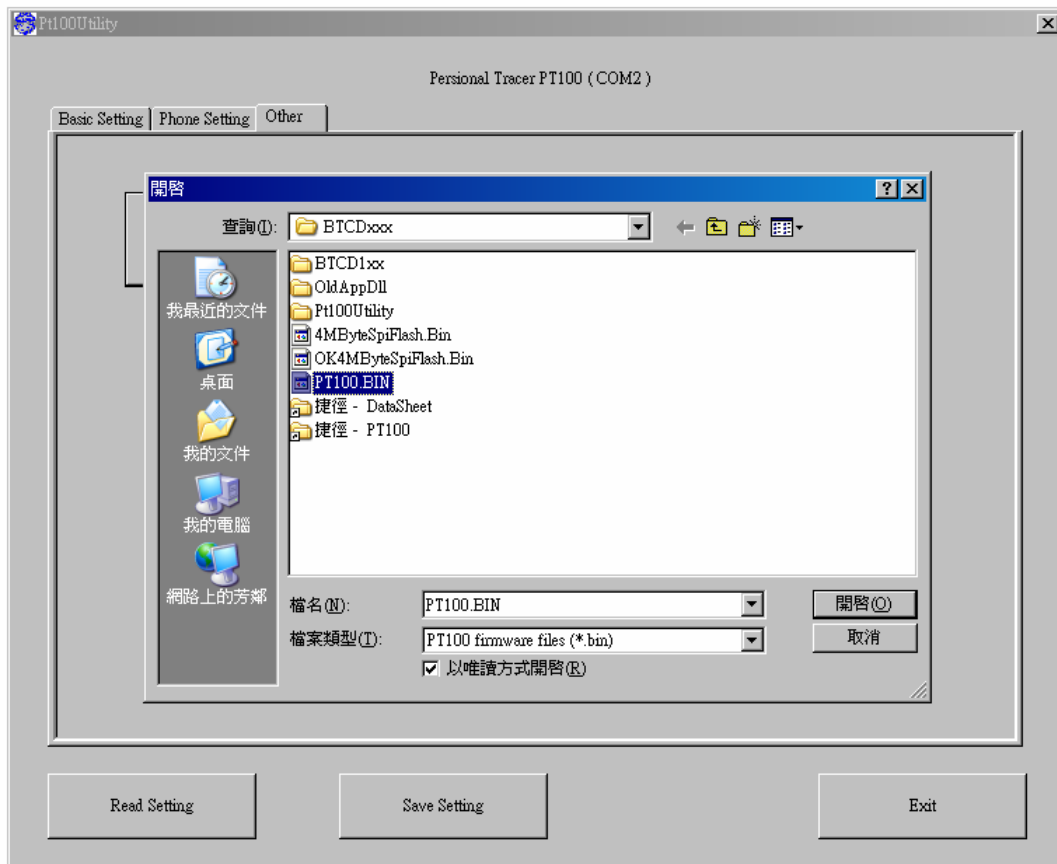
2-1. Save Setting



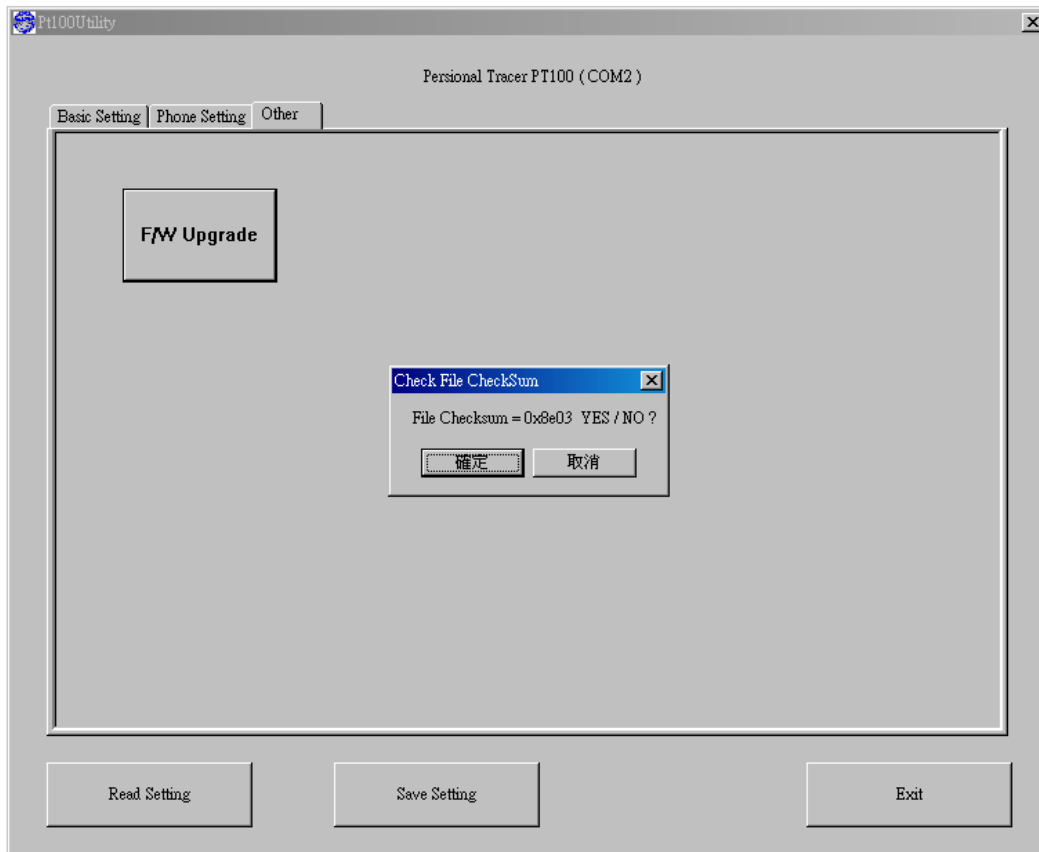
3. Firmware Upgrade



3-1. Select Firmware file (*.BIN)



3-2. Check Checksum



3-3. Finish

