

*** USER'S MANUAL ***

FCC ID : SRKWPSPT100

FCC label requirement

Please note :

- (1) The device bear a label with FCC ID:SRKWPSPT100 attached on the bottom of the device and a second label with FCC ID:UDV-0606020060002 attached on RF module inside the device .
- (2) FCC label shown as :

FCC ID: SRKWPSPT100 Contains FCC ID:UDV-0606020060002
--

FCC RF exposure requirement

To allow compliance with RF exposure requirement for the device integrated with RF module FCC ID.: UDV-0606020060002 which specifications are :

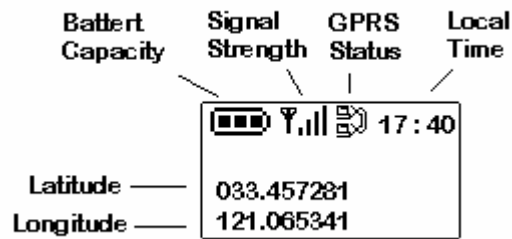
- (a) For GSM 850MHz / GSM 900MHz band is 33dBm (= 2W) , the maximum antenna gain with cable is 0.5 dBi .
- (b) For DCS1800MHz / PCS1900MHz band is 30dBm (= 1W) , the maximum antenna gain with cable is 1.0 dBi .

The SAR evaluation , please refer the report No. 07-04-MAS-130-02 .

System Modes

1. Normal Mode :

A. Normal :



Power Button Long Press : Power OFF.

Power Button Short Press : Switch To GPS Info. Mode.

Button 1 Long Press : Parking ON/OFF

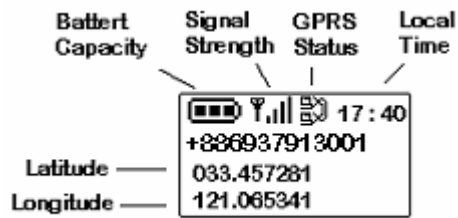
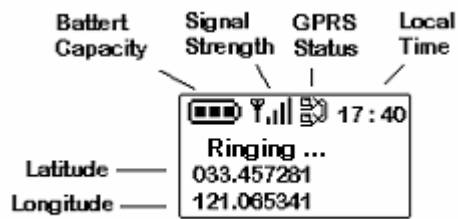
Button 2 Long Press : Dial Emergency Phone 1 (Set Up By Utility).

Button 3 Long Press : Dial Emergency Phone 2 (Set Up By Utility).

Button 4 Long Press : Dial Emergency Phone 3 (Set Up By Utility).

Button 5 Long Press : Send Emergency SMS (Set Up By Utility).

B. When Ring In :



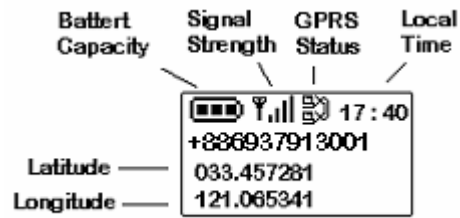
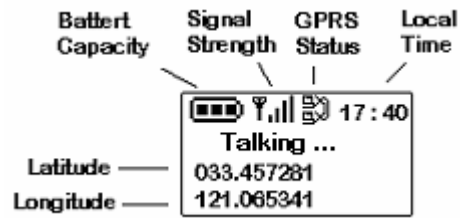
Power Button Long Press : Power OFF.

Power Button Short Press : Pick Up Phone.

Button 1~4 Short/Long Press: Pick Up Phone.

Button 5 Short/Long Press: Hand Up Phone.

C. When Talking :



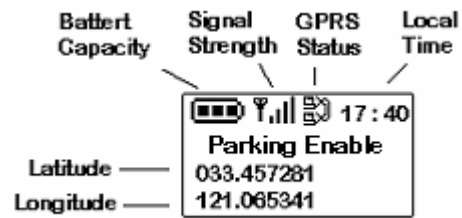
Power Button Long Press : Power OFF.

Button 3 Short Press: Volume Up.

Button 4 Short Press: Volume Down.

Button 5 Short Press: Hand Up Phone.

C. When Parking Enable:



Power Button Long Press : Power OFF.

Button 3 Short Press: Volume Up.

Button 4 Short Press: Volume Down.

Button 5 Short Press: Hand Up Phone.

2. GPS Information Mode :

No Fix :

		GPS NO Fix
Year/Month/Day	06/12/14	NO FIX
Hour:Min:Sec	17:20:30	
Latitude	033.457281	
Longitude	121.065341	

Fix :

Year/Month/Day	06/12/14	96KM	Speed (KM/H)
Hour:Min:Sec	17:20:30	270H	Heading
Latitude	033.457281	15M	Altitude
Longitude	121.065341	4S	Satallites

A. Normal

Power Button Long Press : Power OFF.

Power Button Short Press : Switch To Dial Phone Mode.

Button 2 Long Press : Dial Emergency Phone 1 (Set Up By Utility).

Button 3 Long Press : Dial Emergency Phone 2 (Set Up By Utility).

Button 4 Long Press : Dial Emergency Phone 3 (Set Up By Utility).

B. When Ring In :

Power Button Long Press : Power OFF.

Power Button Short Press : Pick Up Phone.

Button 1~4 Short/Long Press: Pick Up Phone.

Button 5 Short/Long Press: Hand Up Phone.

3. Dial Phone Mode :

Dial Phone Mode
093700
0 1 2 3 4 5 6 7 8 9

Power Button Long Press : Power OFF.

Power Button Short Press : Switch To Normal Mode.

Button 1 Short Press : Select Current Number To Dial List.

Button 2 Short Press : Clear Current Number To Dial List.

Button 3 Short Press : Right Shift Number .

Button 4 Short Press : Lift Shift Number .

Button 5 Long Press : Dial Out.

Note : System will go back to normal mode after 10 sec without any button press

Utility Setting

1. Unit Setting

The screenshot shows the 'P100Utility' application window. The title bar reads 'P100Utility' and the subtitle is 'Personal Tracer PT100 (COM2)'. There are three tabs: 'Basic Setting', 'Phone Setting', and 'Other'. The 'Unit Setting' tab is active. It contains the following fields and values:

Field	Value
Unit ID	1020000082
Pin Code	0
Time Zone	+8
Sync. Timer[Sec]	60

The 'GPRS Setting' section contains:

Field	Value
GPRS User Name	
GPRS Password	
GPRS APN	INTERNET

The 'Internet Setting' section contains:

Field	Value
Host Address	220.130.174.160
Host Port	4100
Host DNS	168.95.1.1

Buttons at the bottom include 'Read Setting', 'Save Setting', 'Clear', and 'Exit'.

Unit ID : The identification number of the unit. The default unit ID is 1010000001.

Pin Code : The PIN code of the GSM/GPRS SIM card. (Max. 4 digits)

Sync. Timer : Synchronization message sending interval in seconds.(10 ~ 65535 seconds) 0: Only one sync message be transmitted when the unit connected to the server.

GPRS APN : GPRS Access Point Name. (Max. 35 characters)

GPRS User Name : GPRS login user name (Max. 15 characters)

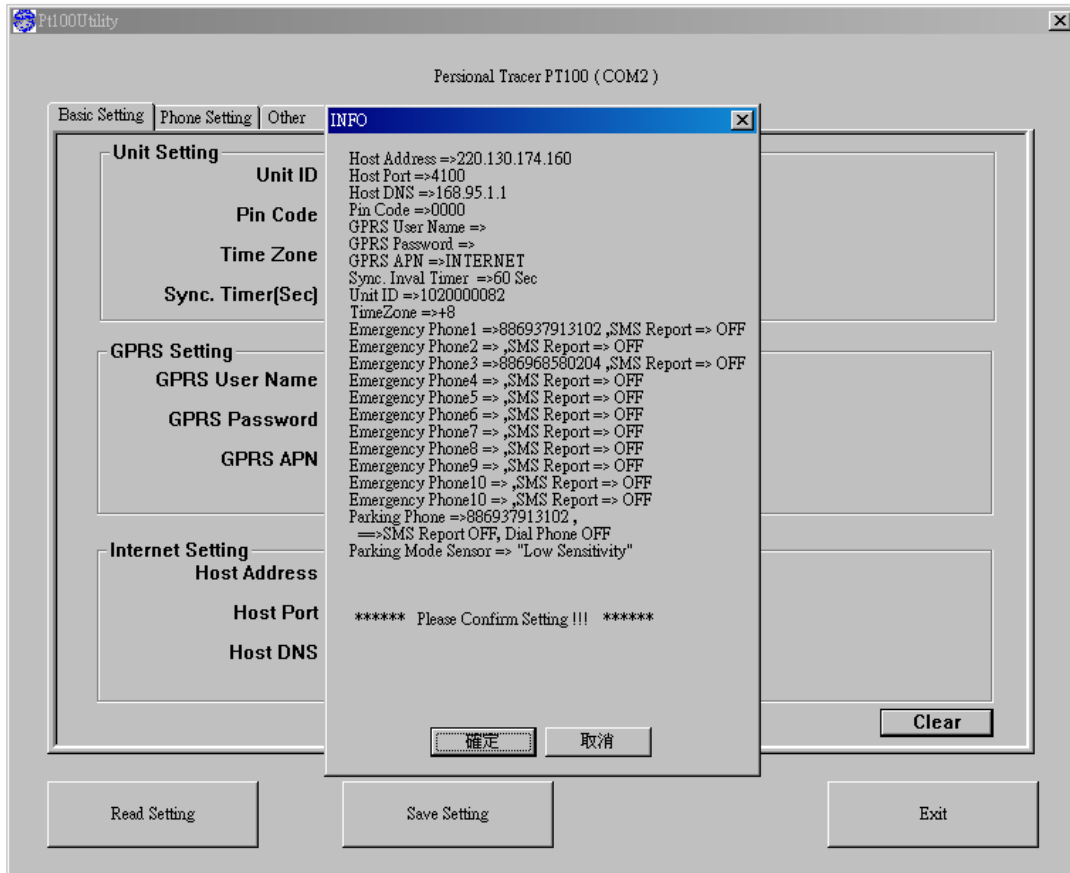
GPRS Password : GPRS login password (Max. 15 characters)

Host Address : The base station static WAN IP/DNS address. (Max. 30 characters)

Host Port : The base station application port number of the UDP/TCP

Host DNS : DNS IP address.

1-1. Save Setting



2. Phone Setting

Pt100Utility

Personal Tracer PT100 (COM2)

Basic Setting | Phone Setting | Other

Quick Dial Setting

Phone 1 (Button 2) :	<input type="text" value="886937913001"/>	<input type="checkbox"/> SMS Report
Phone 2 (Button 3) :	<input type="text" value="886937913002"/>	<input checked="" type="checkbox"/> SMS Report
Phone 3 (Button 4) :	<input type="text" value="886937913003"/>	<input type="checkbox"/> SMS Report

Emergency SMS Report Setting

SMS Phone 4 :	<input type="text" value="886937913004"/>	<input type="checkbox"/> SMS Report
SMS Phone 5 :	<input type="text" value="886937913005"/>	<input type="checkbox"/> SMS Report
SMS Phone 6 :	<input type="text" value="886937913006"/>	<input type="checkbox"/> SMS Report
SMS Phone 7 :	<input type="text" value="886937913007"/>	<input checked="" type="checkbox"/> SMS Report
SMS Phone 8 :	<input type="text" value="886937913008"/>	<input type="checkbox"/> SMS Report
SMS Phone 9 :	<input type="text" value="886937913009"/>	<input type="checkbox"/> SMS Report
SMS Phone 10 :	<input type="text" value="886937913010"/>	<input checked="" type="checkbox"/> SMS Report

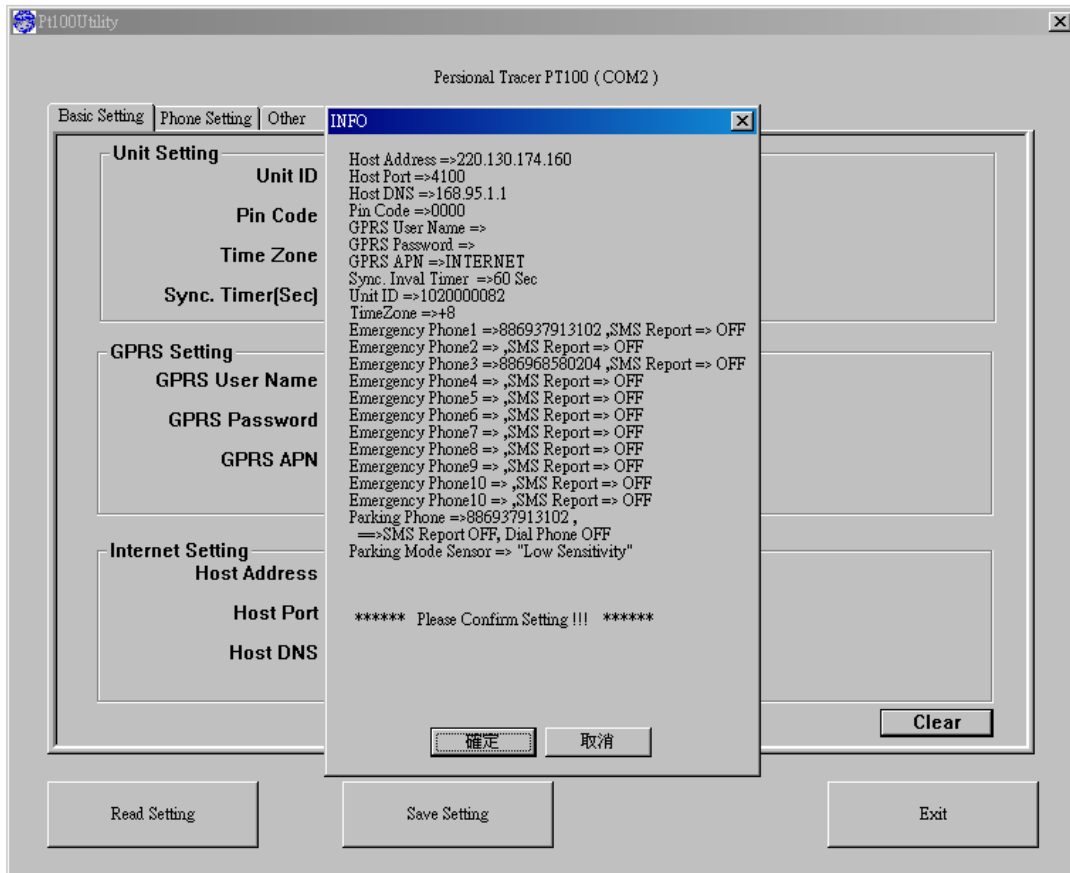
Parking Setting

Parking Phone :	<input type="text" value="886937913011"/>	<input checked="" type="checkbox"/> SMS Report	<input checked="" type="checkbox"/> Dial Phone
<input type="radio"/> High Sensitivity <input type="radio"/> Medium Sensitivity <input checked="" type="radio"/> Low Sensitivity			

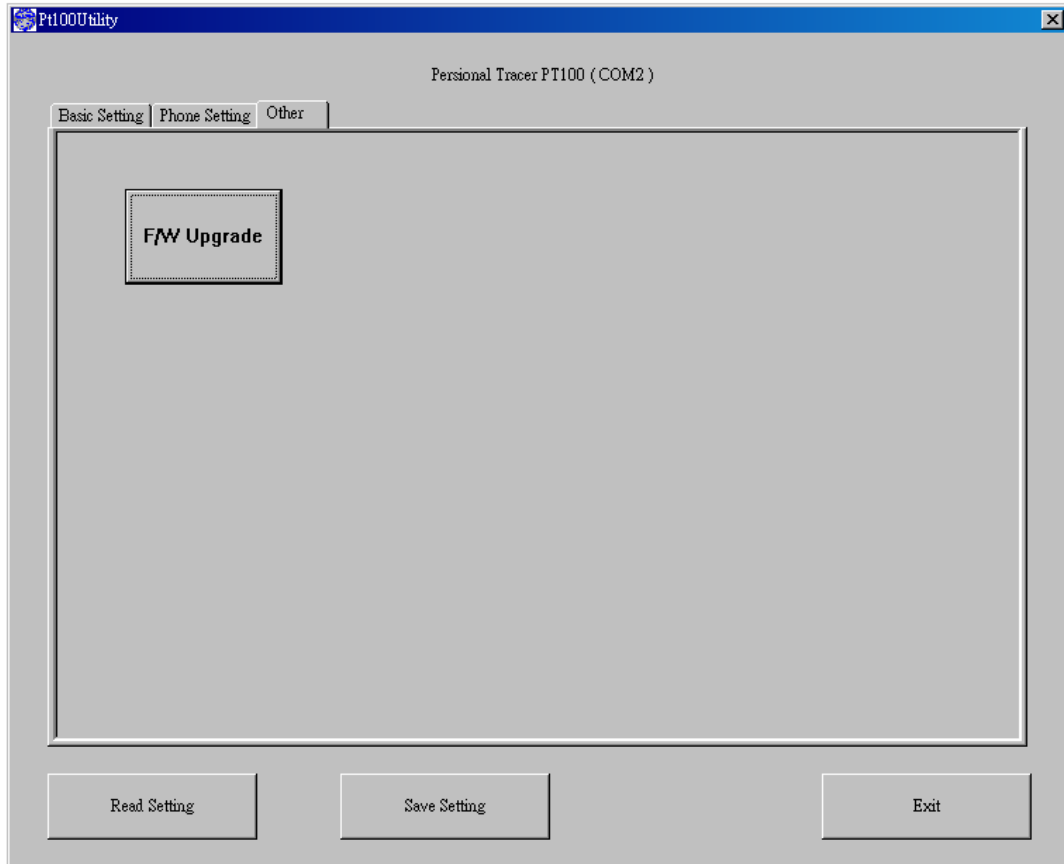
Clear

Read Setting Save Setting Exit

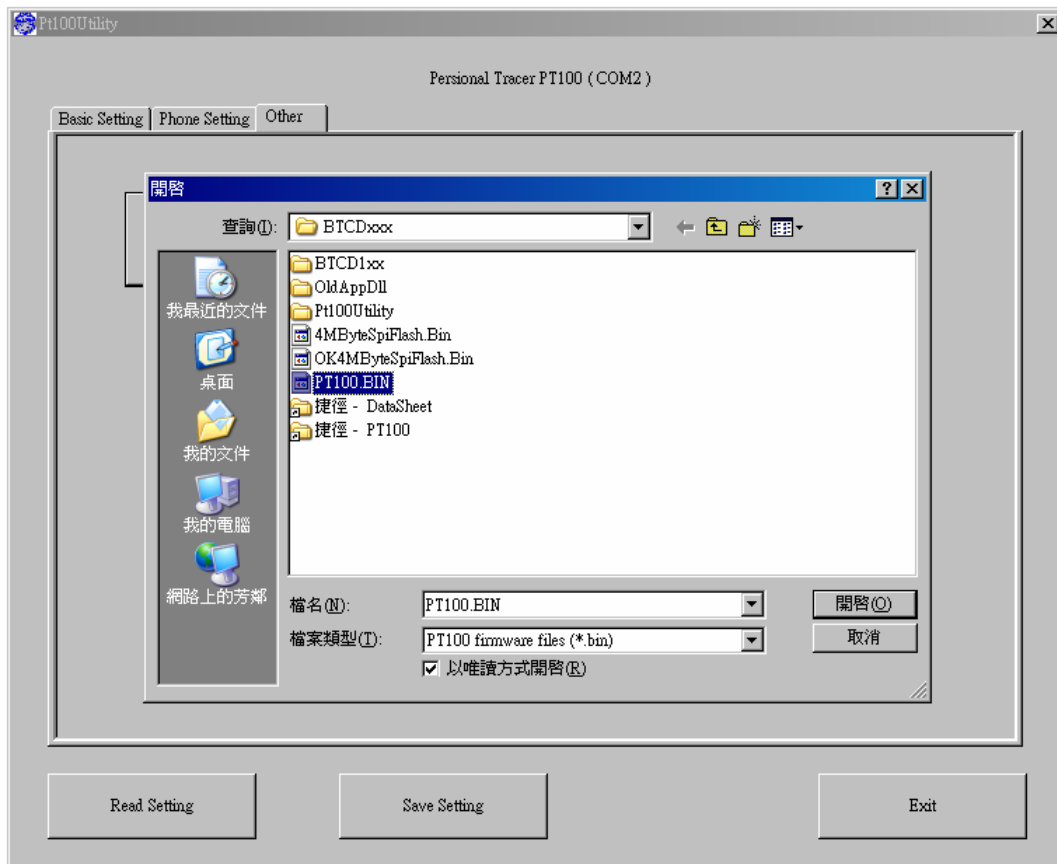
2-1. Save Setting



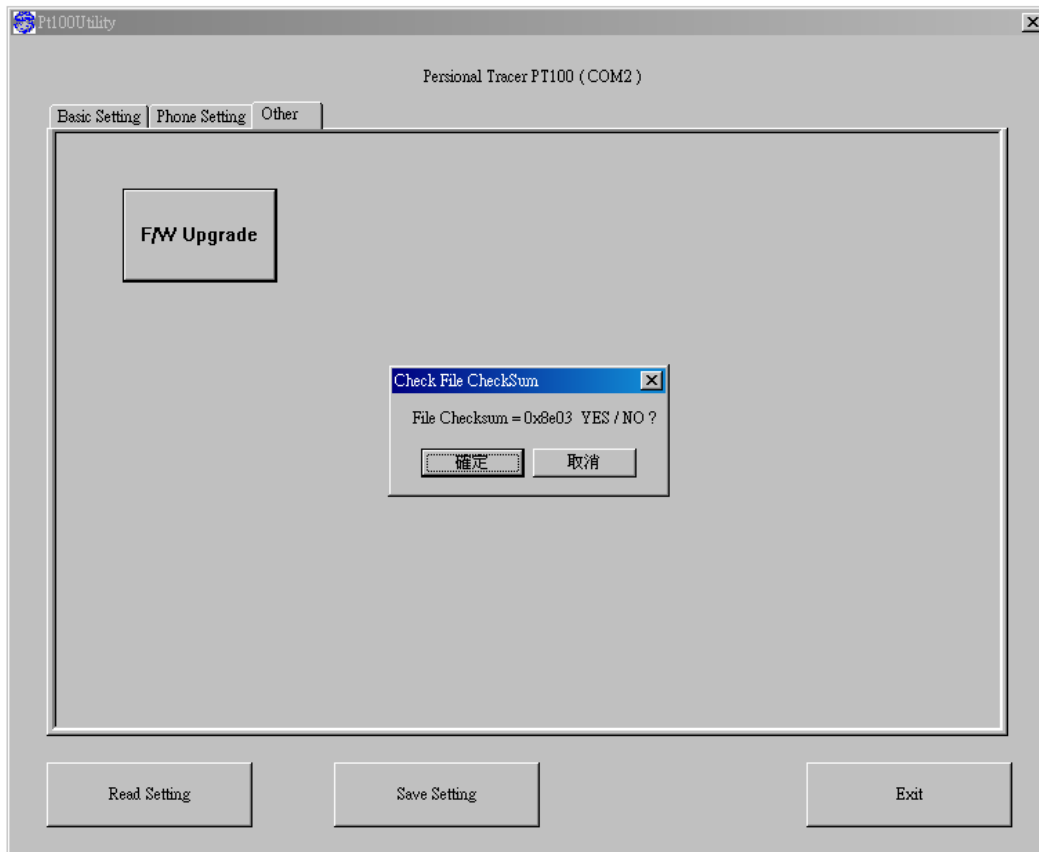
3. Firmware Upgrade



3-1. Select Firmware file (*.BIN)



3-2. Check Checksum



3-3. Finish

