

Dear Valued Customer,

In order to protect your consumer rights, please ensure that at the time of purchase you fill out the provided warranty certificate, coupled with the retailer stamp so as to ensure valid warranty.

親愛的顧客您好，為了保障您的權益，請您於購買時，立即請經銷商填寫購買日期並蓋店章，也請妥善保存保固書，才能享有本公司之完整售後服務。

**LUXA<sup>2</sup>**  
A Division of Thermaltake

Product Name\* (品名\*)

Serial number\* (序號\*)

Date of purchase\* (購買日期\*) (AD) 西元 (Year) 年 (Month) 月 (Date) 日

Name (姓名)

Telephone No. (電話)

Address (地址)

E-mail (電子信箱)

Store of purchase (Official stamp required)  
經銷店章\* (請務必蓋章保固方為有效)

• Warranty period begins on the date of purchase of brand new, unused products by first-end user. Please retain receipt and warranty certificate as proof of purchase.

• If within warranty period, the product is determined defective, please return to the original store of purchase for a replacement.

• For additional services, please email [info@luxa2.com](mailto:info@luxa2.com) or contact one of our global offices, of which, details can be found on the previous page.

• 本廠店章及未填上購買日期，則保固期限以產品序列號所查到的出貨日期開始計算。

• 維修流程：聯絡原廠買家→確認不良品→店家維修→寄件回廠寄

• 如有其他服務，請寄電子郵件至 [info@luxa2.com](mailto:info@luxa2.com) 詳情或直接聯繫 LUXA2 全球分公司業務專員，詳情請洽 LUXA2 官網 <http://www.luxa2.com.tw/>

**Groovy** 

Bluetooth Speaker with Wireless Power Station

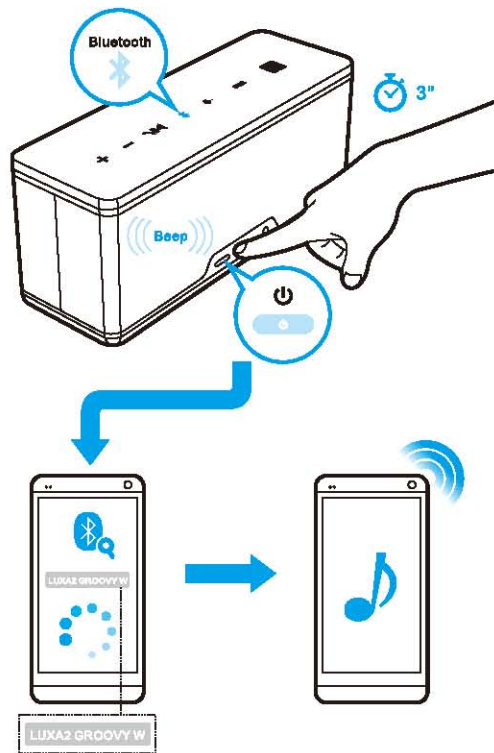
**QUICK START GUIDE**

★★★★★  
**BLUETOOTH  
NFC TECHNOLOGY  
WIRELESS CHARGING**  
★★★★★

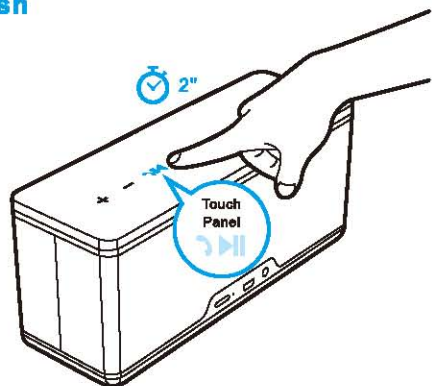




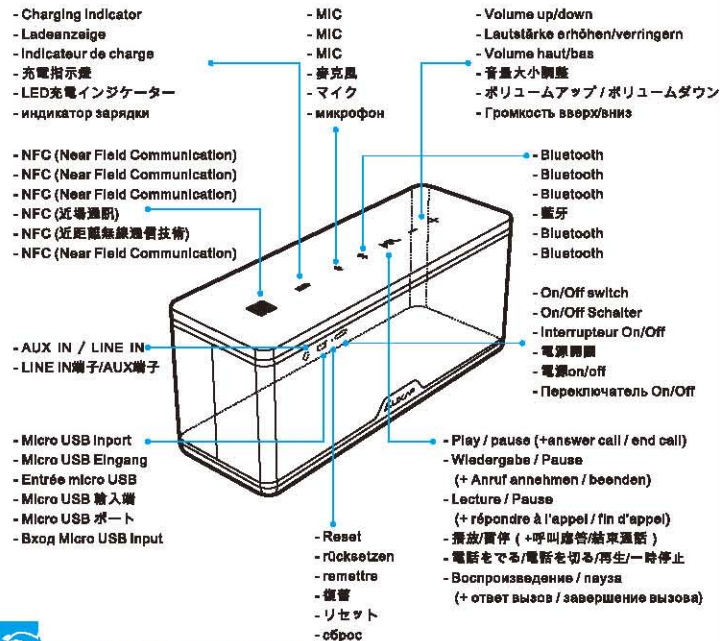
## Bluetooth Pairing



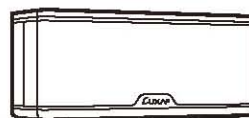
## Refresh



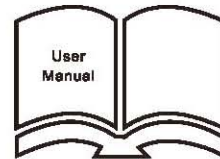
## Buttons & Controls



## Package Contents



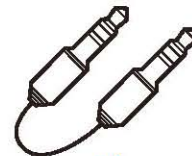
x1



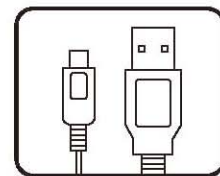
x1



x1

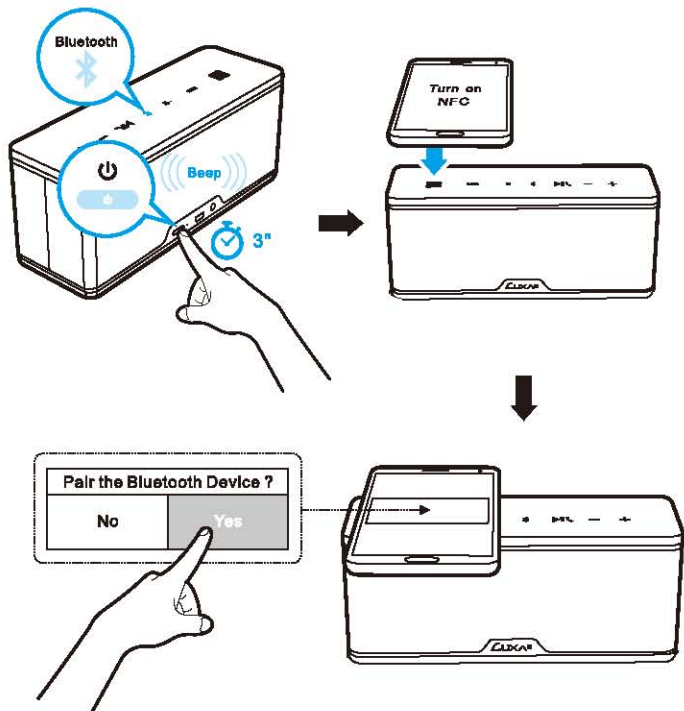


x1

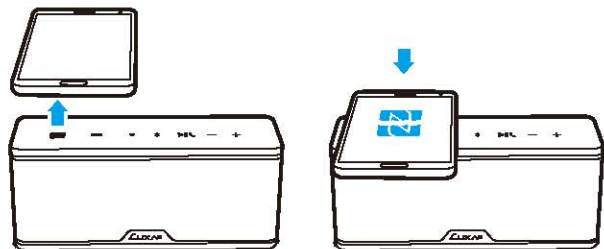


x1

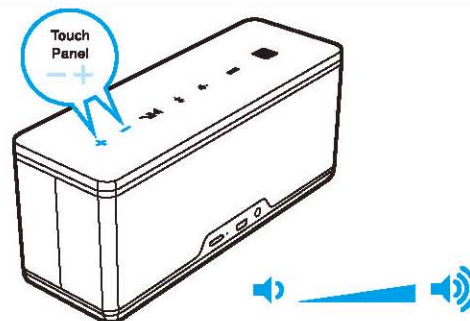
## NFC Pairing



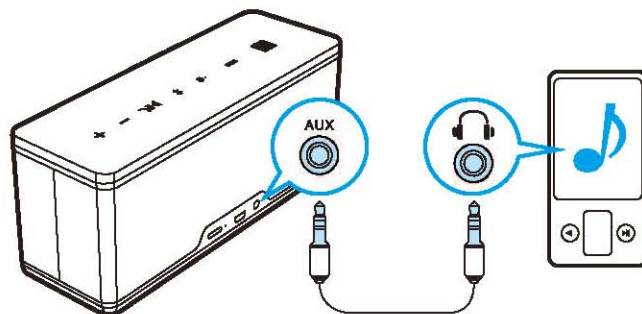
## NFC Unpairing



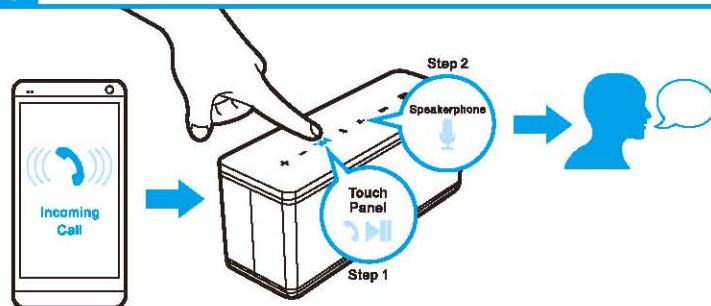
## Volume



## AUX In

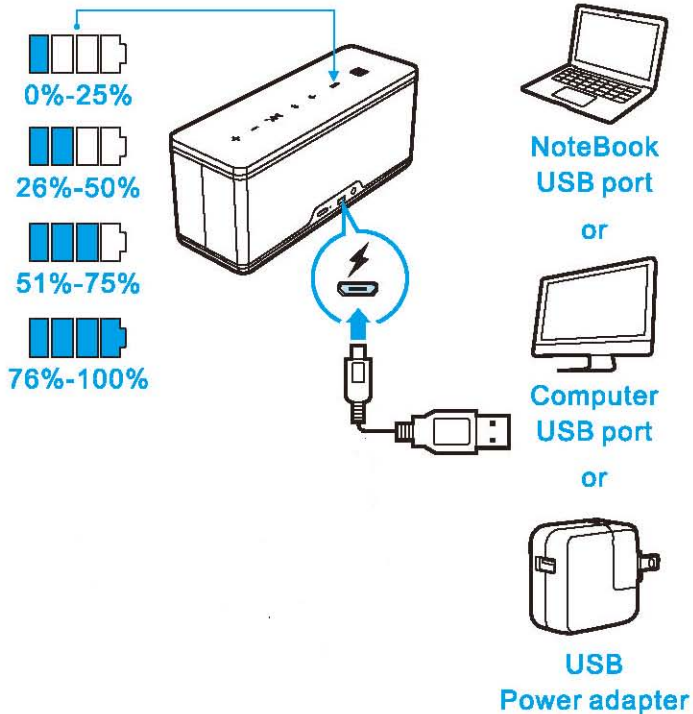


## Speakerphone

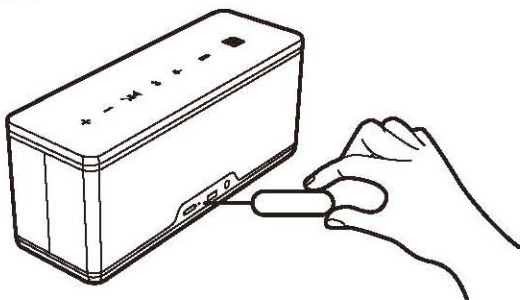




## Charge In



## Reset



## General Features

- Combining Great Sound with Sleek Design
- Bluetooth & NFC Technology
- Micro-USB Charging with LED
- WPC Charging Station
- Speakerphone Capability
- LED Touch Panel
- Easy Portability
- Wireless & Wired Charging Supported

## Technical Specification-Speaker

- Bluetooth Module: F-3066 (chip:ISSC1681)
- Receive Sensitivity: -80dBm@0.1%BER
- Wireless Range: <=10m
- Audio SNR: 70dB
- Power Source: 2200mAh / 3.7V / 8.14 Wh
- Playing time: 10 hours
- Charging time: 4 hours
- Audio Output Power: 3W X 2 (Max.)
- Audio Frequency Responses: 80HZ – 20KHZ
- Dimension: 190 x 65 x 81mm
- Weight: 596g

## Technical Specification-Wireless charging station

- Capacity: 4000mAh / 3.7V / 14.8Wh
- Input: DC 5V / 1A
- Output: TX - 5V / 1A; USB Port - 5V / 1A
- Charging time: 5 hours
- Dimension: 196 x 71 x 16mm
- Weight: 192g

## Package contents

- Bluetooth Speaker with Wireless Power Station x 1
- Pouch x 1
- Micro USB to USB charging cable x 1
- AUX cable x 1
- User manual x 1



### Warnings:

- Don't drop, disassemble or attempt to repair the speaker by yourself.
- Avoid exposure to water or high humidity.
- Don't expose to any heat source.

## Allgemeine Merkmale

- Die Kombination von Great Sound mit Schlanke Design
- Bluetooth & NFC Technologie
- Micro-USB-Lade mit LED
- WPC-Ladestation
- Freisprecheinrichtung
- LED Touch Panel
- Einfache Mobilität
- Wireless & Wired Lade Unterstützte

## Technische Daten-Lautsprecher

- Bluetooth-Modul: F-3066 (chip:ISSC1681)
- Empfindlichkeit beim Empfang: -80dBm@0.1%BER
- Drahtlosreichweite: <=10m
- Audio-SRV: 70dB
- Stromversorgung: 2200mAh / 3.7V / 8.14 Wh
- Spielzeit: 10 Stunden
- Ladezeit: 4 Stunden
- Audioausgangsleistung: 3W X 2 (Max.)
- Audiofrequenzreaktion: 80HZ – 20KHZ
- Abmessungen: 190 x 65 x 81mm
- Gewicht: 596g

## Technische Daten-Wireless-Ladestation

- Kapazität: 4000mAh / 3,7 V / 14.8Wh
- Eingang: DC 5V / 1A
- Ausgang: TX - 5V / 1A, USB-Port - 5V / 1A
- Ladezeit: 5 Stunden
- Maße: 196 x 71 x 16mm
- Gewicht: 192g

## Package contents

- Bluetooth-Lautsprecher mit Wireless-Power Station x 1
- Pouch x 1
- Micro-USB-zu-USB-Ladekabel x 1
- AUX-Kabel x 1
- Anleitung x 1



### Warnungen:

- Nicht fallen lassen, verbergen oder zu versuchen, oder reparieren Sie die Lautsprecher von sich.
- Weder Wasser noch hoher Feuchtigkeit aussetzen.
- Keinen Hitzequellen aussetzen.

## Caractéristiques générales

- La combinaison de la qualité sonore avec design élégant
- Bluetooth et la technologie NFC
- Micro-USB de charge avec LED
- WPC station de recharge
- haut-parleur
- écran tactile LED
- Facile portabilité
- Sans fil et filaire de charge pris en charge

## Spécification Technique-Président

- Module Bluetooth: F-3066 (puce:ISSC1681)
- Sensibilité de réception: -80dBm@0.1%BER
- Portée sans fil: <=10m
- Rapport Signal / Bruit Audio: 70dB
- Source d'alimentation: 2200mAh / 3.7V / 8.14 Wh
- Temps de jeu: 10 heures
- Temps de recharge: 4 heures
- Puissance de sortie audio: 3W X 2 (Max.)
- Réponses audio en fréquences: 80HZ – 20KHZ
- Dimensions: 190 x 65 x 81mm
- Poids: 596g

## Technique station de charge Spécifications-fil

- Capacité: 4000mAh / 3.7V / 14.8Wh
- Entrée: DC 5V / 1A
- Sortie: TX - 5V / 1A; Port USB - 5V / 1A
- Temps de charge: 5 heures
- Dimension: 196 x 71 x 16mm
- Poids: 192g

## Contantes de l'emballage

- Haut-parleur Bluetooth avec Power Station sans fil x 1
- Pouch x 1
- Câble de recharge Micro USB vers USB x 1
- Câble AUX x 1
- Manuel x 1



### Avertissements:

- Ne laissez pas tomber, dissimuler ou tenter de réparer le haut-parleur ou par vous-même.
- Évitez l'exposition à l'eau ou à l'humidité.
- N'exposez pas à une source de chaleur.

## 特點

- 超凡的音樂品質 & 俐落的造型
- 無線藍芽連接技術 & NFC快速配對功能
- 支援Micro-USB充電 & LED 電量指示燈顯示
- 高端技術的無線充電板,讓您可以輕鬆享受無線充電的便利性。
- 來電接聽功能
- LED觸控面板
- 可拆卸式設計
- 之支援無線及有線充電

## 規格-喇叭

- 藍芽模組: F-3066 (chip:ISSC1681)
- 接收靈敏度: -80dBm@0.1%BER
- 播放距離: <=10公尺
- 音頻信噪比: 70dB
- 電池: 2200mAh / 3.7V (內建可充式鋰電池) / 8.14 Wh
- 播放時間: 10 小時
- 充電時間: 4 小時
- 輸出功率: 3W X 2 (Max.)
- 頻率響應: 80HZ – 20KHZ
- 尺寸: 190 x 65 x 81mm
- 重量: 596g

## 規格-無線充電座

- 容量: 4000mAh / 3.7V / 14.8Wh
- 輸入: DC 5V / 1A
- 輸出: TX - 5V / 1A ; USB Port - 5V / 1A
- 充電時間: 5 小時
- 尺寸: 196 x 71 x 16mm
- 重量: 192克

## 包裝內容

- 無線充電藍芽喇叭 x 1
- 收納袋 x 1
- Micro USB 傳輸線 x 1
- 音源線 x 1
- 說明書 x 1

### ⚠ 警告:

- 請勿任意的拆解、摔落或改造喇叭。
- 請勿將移動電源暴露於潮濕的環境。
- 請遠離火源和高溫環境。

根據交通部 低功率管理辦法 規定:

第十二條 經型式認證合格之低功率射頻電機,非經許可,公司、商號或使用者均不得擅自變更頻率、加大功率或變更原設計之特性及功能。  
第十四條 低功率射頻電機之使用不得影響飛航安全及干擾合法通信;經發現有干擾現象時,應立即停用,並改善至無干擾時方得繼續使用。前項合法通信,指依電信法規定作業之無線電通信。低功率射頻電機須忍受合法通信或工業、科學及醫療用電波輻射性電機設備之干擾。

## 說明

- コンビネーションして優れたサウンドとスマートなデザイン
- Bluetooth & NFC テクノロジーを採用
- Micro-USB經由充電、そしてLED付きで充電状況がわかります
- ワイヤレスパワーコンソーシアム規定
- ポータブルバッテリー
- 内蔵マイク搭載で通話も可能
- LEDタッチパネル搭載
- 持ち運び便利
- ワイヤレス及びUSB充電に対応

## スピーカースペック

- Bluetooth モジュール: F-3066 (chip:ISSC1681)
- 受信感度: -80dBm@0.1%BER
- ワイヤレスレンジ: <=10m
- オーディオSNR: 70dB
- 電源出力: 2200mAh / 3.7V / 8.14 Wh
- 10時間使用可能
- 充電時間: 4時間
- オーディオ出力: 3W X 2 (最大)
- オーディオ周波数: 80HZ – 20KHZ
- 外形寸法: 190 x 65 x 81mm
- 重量: 596g

## ワイヤレス充電スペック

- 容量: 4000mAh / 3.7V / 14.8Wh
- 入力: DC 5V / 1A
- 出力: TX - 5V / 1A ; USB Port - 5V / 1A
- 充電時間: 5時間
- 外形寸法: 196 x 71 x 16mm
- 重量: 192g

## 製品内容

- Bluetoothスピーカー x 1
- ワイヤレス充電パッド x 1
- ポーチ x 1
- Micro USB ケーブル x 1
- AUX ケーブル x 1
- 取り扱い説明書 x 1

### ⚠ ご注意:

- たたきつたり、ご自分で修理等を試みないでください。
- 水に触れたり高湿度の場所での使用は避けてください。
- 高熱に発する場所での使用は避けてください。

## Общие характеристики

- Объединение великолепному качеству звука с изящным дизайном
- Bluetooth & NFC Технология
- Микро-USB зарядка со светодиодом
- WPC зарядной станции
- Спикерфон Возможность
- Светодиодные панели сенсорный
- Простота Переносимость
- Беспроводная & проводной зарядки Поддерживаемые

## Технические характеристики-спикер

- Модуль Bluetooth: F-3066 (чип: ISSC1681)
- Чувствительность приемника: -80dBm @ 0.1% BER
- Беспроводной диапазон: <= 10 м
- Аудио SNR: 70 дБ
- Источник питания: 2200mAh / 3.7V / 8.14 Wh
- Время игры: 10 часов
- Время зарядки: 4 часов
- Выходная мощность: 3 Вт x 2 (макс.)
- Аудио Частотные характеристики: 80 Гц - 20 кГц
- Размеры: 190 x 65 x 81 мм
- Вес: 596g

## Технические характеристики-Беспроводная зарядная станция

- Емкость: 4000mAh / 3.7V / 14.8Wh
- Вход: DC 5V / 1A
- Выход: TX - 5V / 1A; Порт USB - 5V / 1A
- Время зарядки: 5 часов
- Размеры: 196 x 71 x 16 мм
- Вес: 192g

## Пакет содержит

- Bluetooth-динамик с вокзала Wireless питания x 1
- Чехол x 1
- Micro USB к USB кабель для зарядки x 1
- AUX кабель x 1
- Руководство пользователя x 1

### **Внимание!**

- Не бросайте, не лукавить и не пытаться ремонтировать или динамик самостоятельно.
- Избегайте воздействия воды или высокой влажности.
- Не подвергайте воздействию любого источника тепла.

Thank you for choosing LUXA2 products. If you have any question, please contact us by the following information. We will reply you as soon as possible.

## Headquarter

Thermaltake Technology Co., Ltd. - LUXA2 Business Division

TEL: +886-2-8797-5788

FAX : +886-2-8797-5199

E-MAIL: info@luxa2.com

www.luxa2.com.tw

## Overseas Branch

Thermaltake U.S.A. - LUXA2 Division

TEL: +1-626-968-9189

FAX : +1-626-968-7659

E-MAIL: info.usa@luxa2.com

www.luxa2.com

Thermaltake Beijing Co., Ltd. - LUXA2 Division

TEL: +86-10-8288-3703

FAX : +86-10-8288-3302

E-MAIL: info.cn@luxa2.com

www.luxa2.com.cn

Thermaltake Russia Representative Office

TEL: +7-495-739-5906

FAX : +7-495-739-5915

E-MAIL: sales@luxa2.com

www.luxa2.ru

Thermaltake Australia and New Zealand Pty Ltd. - LUXA2 Division

TEL: +61-03-9763-1622

FAX : +61-03-9763-1677

E-MAIL: info.au@luxa2.com

Thermaltake Germany GmbH - LUXA2 Division

TEL: +49(0)40/30-85-86-0

FAX : +49(0)40/30-85-86-89

E-MAIL: info.ge@luxa2.com

www.luxa2.de

---

## FCC Statement:

This device complies with part 15 of the FCC Rules. Operation is subject to the following two conditions: (1) This device may not cause harmful interference, and (2) this device must accept any interference received, including interference that may cause undesired operation.

This equipment has been tested and found to comply with the limits for a Class B digital device, pursuant to part 15 of the FCC Rules. These limits are designed to provide reasonable protection against harmful interference in a residential installation. This equipment generates, uses and can radiate radio frequency energy and, if not installed and used in accordance with the instructions, may cause harmful interference to radio communications. However, there is no guarantee that interference will not occur in a particular installation. If this equipment does cause harmful interference to radio or television reception, which can be determined by turning the equipment off and on, the user is encouraged to try to correct the interference by one or more of the following measures:

- Reorient or relocate the receiving antenna.
- Connect the equipment into an outlet on a circuit different from that to which the receiver is connected.

- Consult the dealer or an experienced radio/TV technician for help.

Caution: Any changes or modifications not expressly approved by the party responsible for compliance could void the user's authority to operate the equipment.