

140.0mm ± 0.3

321.0mm ± 0.3

107.0

107.0

107.0

TRANSMITTER USE

There are 4 options: 1 (Low), 2 (Medium), 3 (High), and Bad Tone.

Pressing the appropriate button sends the stimulus to the receiver collar. The stimulus is delivered via the collar receiver probes.

When training, always start at the lowest level and check your dog's response to the stimulus. You should always use the lowest level necessary to get the desired response. As a safety feature, the unit automatically shuts off if a button is pressed for 10 seconds.

If you wish to use tone to control behavior, simply press the Bad Tone button. Your dog will hear an audible tone instead of receiving stimulation and will begin to associate the tone to the misbehavior.

IMPORTANT

1. Troubleshooting: If it appears that the collar is not working:

- Adjust fit of collar
- Trim hair or use longer probes
- Recharge batteries

2. Safety Precautions: To protect your dog and yourself, please observe the following precautions:

- Only use the Havahart® Basic Remote Trainer on healthy dogs. Consult your veterinarian before using the collar if your dog has health problems
- For dogs under two years of age, check collar weekly for tightness.
- Check dogs daily for skin irritation and never leave collar on for more than 12 hours at one time.
- Always use the lowest stimulation possible to train your dog. On small dogs (less than 10 lbs.) use the lowest stimulation levels.

3. Changing Preset Address Code:

The unit (remote and collar) comes preset. Only if an adjacent neighbor has the same system should you need to change the address code. To change the address code, make sure collar is turned off and transmitter is turned on. Press and hold Bad Tone button. LED will light red for 10 seconds to indicate ID setting mode. After 10 seconds, new ID is set and LED returns to blinking battery mode. The unit automatically chooses a new random ID code from 10 separate discreet codes.

4 For more information go to: www.havahart.com, or call 1 (800) 800-1819.

LIMITED LIFETIME WARRANTY

Woodstream warrants that this product will be free from defects in material and workmanship under normal use for 1 year from the date of original consumer purchase.

Within 30 days of the original consumer purchase, this product is covered by Woodstream's 30-day money back guarantee. If you are not satisfied with the performance of this product, you may return it with the original receipt to the place of purchase for a full refund.

After 30 days and during the initial 12 month period Woodstream will, at our option, repair or replace the defective part(s) for a \$15 processing fee. Shipping costs to our facility are not covered by the Warranty. A copy of the original receipt showing the place and date of purchase must accompany the returned item. Please contact Woodstream for a Return Authorization Number (RGA), 800-800-1819, before returning the product to Woodstream. Products without an RGA number will be refused.

After one year from the date of the original consumer purchase, a prorated schedule is available to provide additional coverage. For information regarding this schedule please contact our Consumer Care Department at 800-800-1819.

Use the following address when returning product via UPS or U. S. mail:
WOODSTREAM CORPORATION
69 NORTH LOCUST ST.
LITITZ, PA 17543

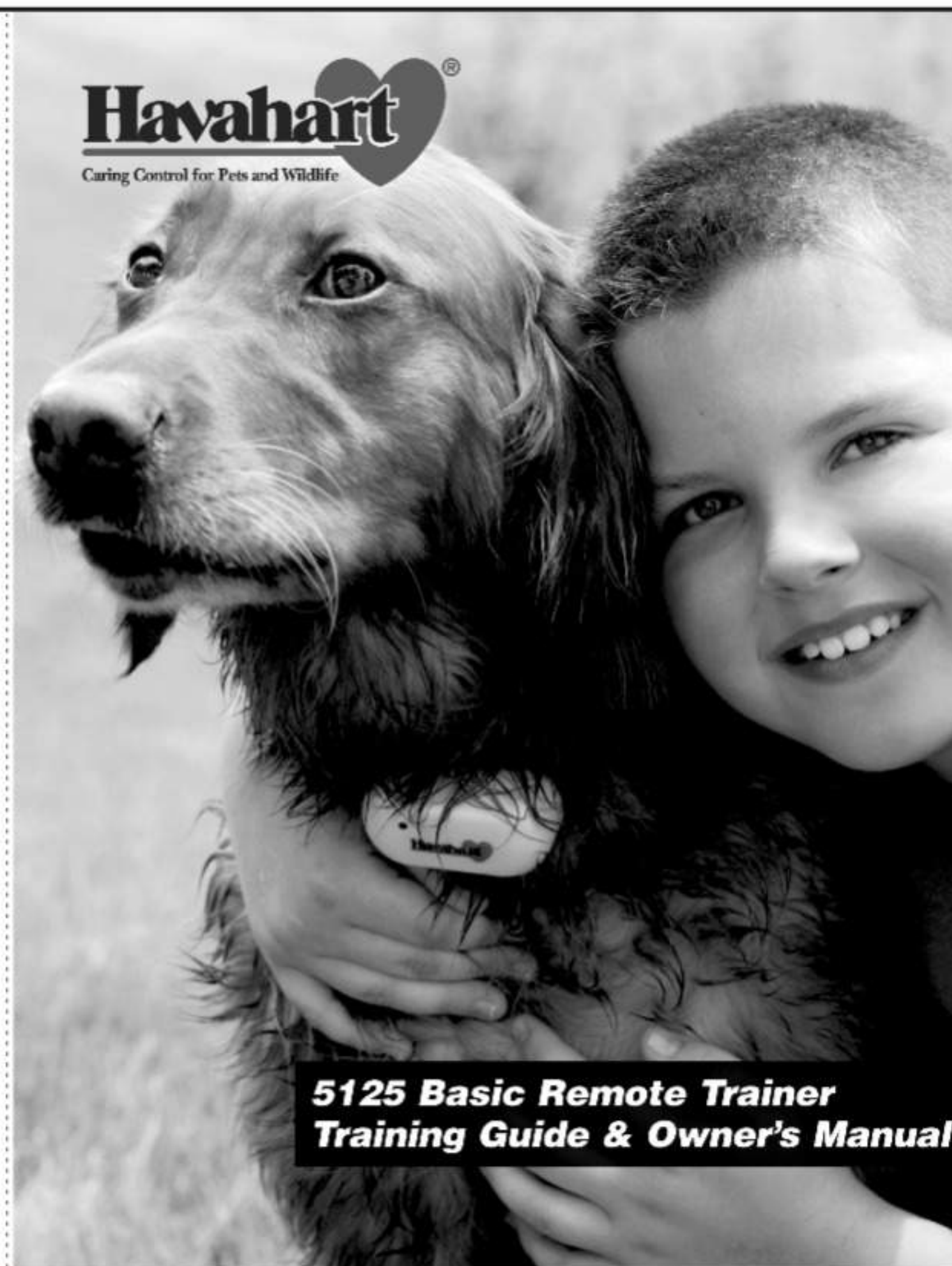
ATTN: CONSUMER CARE DEPARTMENT
RGA# _____

This Limited Lifetime Warranty is offered only to the original consumer purchaser. This Limited Lifetime Warranty is subject to the condition that any covered defect occurs under normal conditions of use and maintenance and that Woodstream receives prompt written notice of the discovery of the defect within the Limited Lifetime Warranty period. It does not apply to damage or failures that result from physical abuse or misuse of the product. The Limited Lifetime Warranty is void if any attempts are made to alter or repair the product prior to returning it to our facility within the Limited Lifetime Warranty period. This Limited Lifetime Warranty does not cover lost parts, broken probe studs or items displaying excessive wear. Wire that has been removed from the spool and /or placed in the ground and flags that are rusted or have been used are examples of items displaying excessive wear.

EXCEPT AS SPECIFICALLY SET FORTH HEREIN, THERE ARE NO WARRANTIES, REPRESENTATIONS, PROMISES OR ASSURANCES BY WOODSTREAM, EITHER EXPRESSED OR IMPLIED, WHETHER BY LAW, CUSTOM, PREVIOUS TRANSACTION OR OTHERWISE, INCLUDING WITHOUT LIMITATION, WARRANTIES OR MERCHANTABILITY OR FITNESS FOR A PARTICULAR PURPOSE WITH REGARD TO THE PRODUCT. WOODSTREAM'S LIABILITY IS SOLELY AS STATED HEREIN AND NO OTHER LIABILITY SHALL EXIST, WHETHER BY NEGLIGENCE, STRICT LIABILITY, TORT OR ANY OTHER CAUSE OR ACTION. ALL LIABILITIES FOR WOODSTREAM STATED HEREIN ARE THE SOLE AND EXCLUSIVE REMEDIES OF THE ORIGINAL CONSUMER PURCHASER. IN NO EVENT SHALL WOODSTREAM BE LIABLE FOR ANY CONSEQUENTIAL OR INCIDENTAL DAMAGES, OR ANY OTHER TYPE OF DAMAGE WHICH MAY BE CAUSED IN WHOLE OR IN PART BY ANY FAILURE, DEFECT OR PROBLEM OF THE PRODUCT.

This product is not a substitute for traditional obedience training. Woodstream does not guarantee the effectiveness of this product due to variances in canine personality, temperament and influences outside of Woodstream's control.

Some states do not allow the exclusion or limitation of consequential damages, so the above limitation or exclusion may not apply in all instances.



5125 Basic Remote Trainer Training Guide & Owner's Manual

折叠线

折叠线

印刷单黑色
材料：120G 白纸
折叠方法如所交给的样板

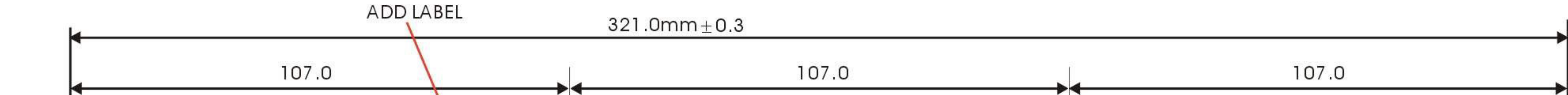
3.		
2.	客人贴 LABEL 更改内容	19/03/04
1.	更改用薄材料印刷	10/12/03
次号	更改内容	日期
	更改记录	

APPROVALS	NAME	DATE
DRAWN BY:	TAN	19/03/2004
CHECKED BY:	TAN	19/03/2004
APP. BY:	LYX	19/03/2004
CUSTOMTER		

ARCO ELECTRONIC LIMITED

AR725 (5125) Training Guide & Owner's Manual Front

SIZE A4	PDG-7250-0-03	REV.A2
SCALE 1:1	Part NO.: 6-7250-0016-00	SHEET 1 of 1



OPERATING INSTRUCTIONS



This device complies with part 15 of the FCC Rules. Operation is subject to the following two conditions: (1) This device may not cause harmful interference, and (2) this device must accept any interference received, including interference that may cause undesired operation.

BEFORE YOU BEGIN...

INTRODUCTION

Realize that individual dogs have unique behaviors and personalities. There is no way to know how your dog will react to its introduction of the Basic Remote Trainer. For the safety of your dog and you, initial training should take place in a confined area where you have complete control over the situation. Also, realize that dogs with aggressive behavior could turn on the handler upon receiving stimulus for the first time. If you believe your dog has aggressive behavior or there is a history of such behavior, we suggest you contact a certified animal behaviorist before using the Basic Remote Trainer.

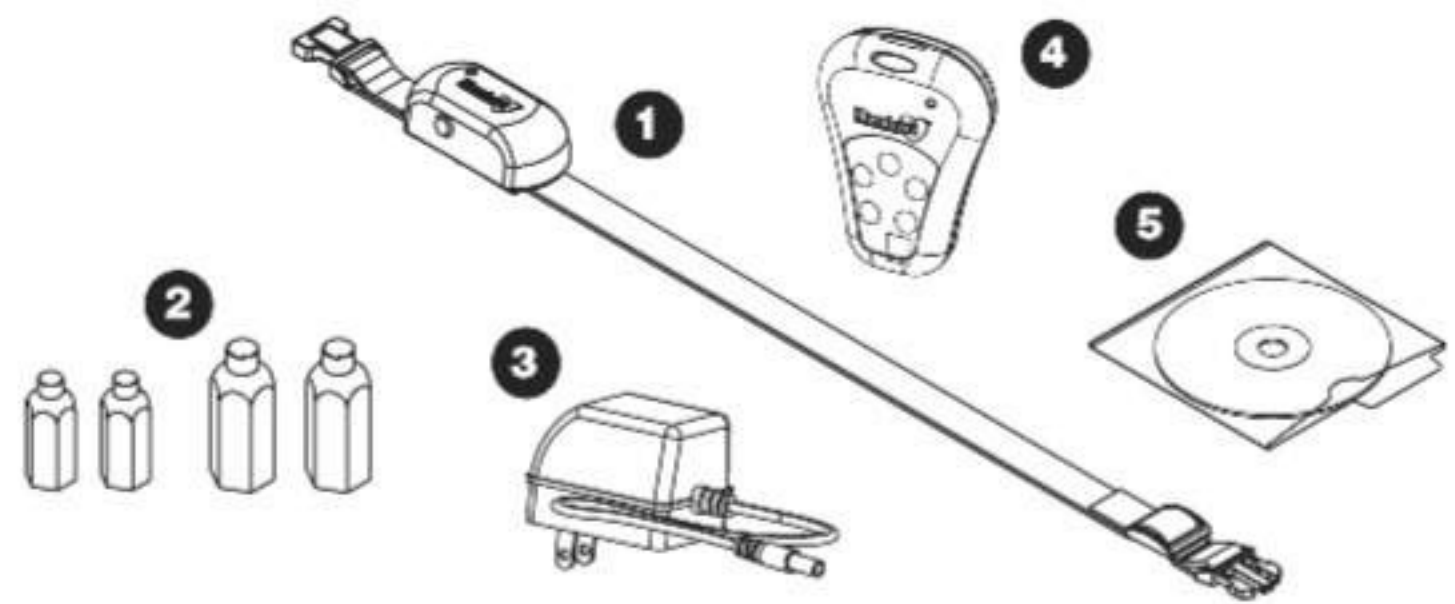
EXPECTATIONS

The Havahart® Basic Remote Trainer effectively and safely uses electrical stimulus to help train your dog. The first time your dog receives a correction, normal reactions may be yelping or jumping. These reactions will decrease as he becomes accustomed to the collar. You should notice improvements in your dog's behavior during the first week of training.

A. FEATURES

1. High Quality Rechargeable NiMH Batteries
2. Train Up to 100 Yards
3. 3 Levels of Correction and Bad Tone
4. LED Indicator Lights
5. Ergonomically Designed Transmitter with Lanyard
6. Rechargeable Lightweight Waterproof Receiver Collar
7. UL Listed Components Included
8. Product Meets FCC Part 15 Regulations*

WARNING: This device operates under Part 15 of the FCC rules. Modifications to this device not expressly authorized by Woodstream could void the users authority to operate this product.



B. CONTENTS OF THE HAVAHART® BASIC REMOTE TRAINER

1. Collar Receiver – Powered by high-quality rechargeable NiMH batteries. This device delivers the stimulation to the dog via the collar probes.
2. Stimulation Probes – (2) sets: (2) short probes for short-haired dogs and (2) long probes for dogs with longer or thicker coats.
3. Battery Chargers (2) – Plug into any standard household outlet when the Hand Held Transmitter or receiver collar needs charged.
4. Hand Held Transmitter – This small, ergonomically designed unit activates the collar receiver through an encoded signal. Powered by high-quality rechargeable NiMH batteries.
5. Training DVD – Guides you through installation and aids you in training your dog.

C. OPERATION OF UNIT

No synchronization of collar and transmitter is necessary to begin. Once batteries are charged and turned on, the transmitter and collar are ready to use.

COLLAR SET UP

1. **Charging the Collar: Charge the unit before initial use of the product.**
To charge, plug AC adapter into standard household outlet and plug charging end into collar. Initial charge will take up to 10 hours and all subsequent charges should take 2 or more hours to completely charge battery.
When the battery requires charge, the LED will rapidly blink. Rapid blinking occurs in a pattern of 2 quick blinks, a 5 second pause, followed by 2 quick blinks and so on. On a charged unit, the LED will blink red at an interval of 1 time every 3 seconds.

2. Turning Collar On & Off:

To turn unit ON, use a small rounded tip pointed item, like a ballpoint pen, to depress the operational button. Button is located at end of unit and is slightly inset. Depress button and hold for 3 seconds. LED illuminates red and unit buzzes for 3 seconds. Unit is now on.

To turn unit OFF, depress and hold button for more than 5 seconds. LED illuminates and unit buzzes. Release button, LED will go dark. Unit is off.

3. Fitting the Collar and Installing the Probes:

Use the short probes for short-haired dogs and long probes for thick or long-haired breeds. Position the collar under the neck with the probes facing upward. Hand tighten the probes as far as you can. If needed, use pliers or wrench to go one turn further. **Do not over tighten.** Always use rubber insulators to keep probes tight and provide insulation during damp conditions. The rubber insulators are necessary to maintain the waterproofing.

Make sure probes maintain contact with skin. If probes do not make skin contact, a small amount of hair may need to be removed. Adjust nylon collar to fit snug but not tight. To reduce movement, place collar on smallest part of neck and position the receiver on the underside of the dog's neck.

Once collar is adjusted to correct length, remove collar, trim excess, and use a small flame to melt end to prevent fraying. Remember, for growing dogs, check collar size weekly and adjust when necessary. Allow enough nylon for the collar to grow with your dog.

IMPORTANT: Never leave collar on for more than 12 consecutive hours.

TRANSMITTER SET UP

1. **Charging the Transmitter: Charge the unit before initial use of the product.** To charge, plug AC adapter into standard household outlet and plug charging end into transmitter. Initial charge will take up to 10 hours and all subsequent charges should take 2 or more hours to completely charge battery.
When the battery requires charge, the LED will rapidly blink. Rapid blinking occurs in a pattern of 2 quick blinks, a 5 second pause, followed by 2 quick blinks and so on. On a charged unit, the LED will blink red at an interval of 1 time every 3 seconds.

Continued on page 4.

折叠线

折叠线

印刷单黑色
材料：120G 白纸
折叠方法如所交给的样板

3.		
2.	客人贴 LABEL 更改内容	19/03/04
1.	更改用薄材料印刷	10/12/03
次号	更改内容	日期
	更改记录	

APPROVALS	NAME	DATE
DRAWN BY:	TAN	19/03/2004
CHECKED BY:	TAN	19/03/2004
APP. BY:	LYX	19/03/2004
CUSTOMTER		

ARCO ELECTRONIC LIMITED

AR725 (5125) Training Guide & Owner's Manual Back

SIZE A4 PDG-7250-0-04 REV.A2

SCALE 1:1 Part NO.: 6-7250-0016-00 SHEET 1 of 1