

Quick Start Guide



Thank you for purchasing the iON Air Pro 3 HD sports video camera.

This QSG contains the common functions and features of Air Pro 3 and Air Pro 3 Wi-Fi. For additional features and functions of Air Pro 3 Wi-Fi, please refer to the back part of the manual.

The iON Air Pro 3 can be mounted with the Bike & Helmet Kit or the Board Kit for the ultimate adventure HD recording experience.

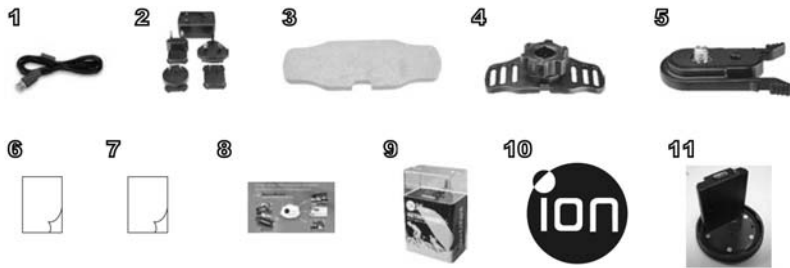
Getting to know your camera

Common features:

- ✓ iON Air Pro 3 is a Professional, High Quality Digital Video Recorder that records Full HD videos with the flip of an easy slide switch
 - ✓ It has the latest 12 Mega Pixel Sensor for you to take great digital photographs
 - ✓ A 180 degree high quality lens provides a super wide angle field of view
 - ✓ Your camera supports a MicroSD card up to 64GB, allowing you to take videos in 1080p with 30 frames per second for approximately 4 Hours.
 - ✓ Equipped with the microphone jack for connection with an external microphone.*
 - ✓ The Waterproof Housing enables you to operate the camera up to 10 meters under water.
 - ✓ iON Air Pro 3 is about 4.51 ounces or 128g.
- * When an external microphone (not included) is connected, audio cannot be recorded through the built-in microphone.

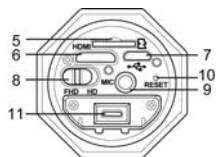
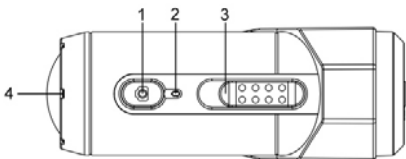
1. Package Contents of Air Pro 3

Carefully unpack the package and ensure that you have the following items:



| | | |
|----|---|--|
| 1 | USB Cable | 1. Connect the camera to a computer for data transfer or camera setup. 2. Charge your camera. |
| 2 | Universal Power Adapter | Attach the correct international wall plug to the adapter block and connect to the camera with the USB cable |
| 3 | Double Faced Adhesive - Helmet | Adhere to the helmet mount and/or helmet. |
| 4 | Helmet Mount with removable ball joint nut | Enables you to mount the camera on different types of helmets by tightening and loosening the ball joint nut |
| 5 | CamLOCK | Mount or remove the camera quickly from the CamLOCK socket. |
| 6 | Quick User Guide | Provides quick information for easy camera operation |
| 7 | Warranty Card | Please retain for manufacturers warranty period which is limited to 1 year. |
| 8 | Mi-media Card | Provides guidance on how to sign up for your free iON cloud storage. |
| 9 | Package - Plastic Display Tinbox and Paper Sleeve | |
| 10 | ION Logo Label | |
| 11 | WiFi Podz | |

2. Functional Parts of Air Pro 3



| | | |
|----|-------------------------|--|
| 1 | Power | 1. Turns the camera on or off 2. Takes a single photograph |
| 2 | LED Indicator | Shows the camera status |
| 3 | Recording Slide Switch | Slide to start or stop video recording |
| 4 | Lens | High quality lens |
| 5 | MicroSD Card Slot | MicroSD card storage location. |
| 6 | Mini HDMI Jack | To enable you to connect the camera to an HDTV with an HDMI cable (not included) |
| 7 | USB Port | 1. Connect to your computer for data transfer or camera setup 2. Charge your camera |
| 8 | Video Resolution Switch | Select video resolution: FHD (Full HD) or HD. |
| 9 | Mic Jack | To enable you to connect to an external microphone (not included) |
| 10 | Reset Button | Reset the camera |
| 11 | PODZ Socket | Connect the PODZ to the camera to perform additional functions |

3. Using Your Camera

3.1 Charging up Your Camera

Charge your camera with either the USB cable or AC/DC adapter. The red LED will light up to indicate the camera is charging and it will turn off once the camera has been fully charged. It takes about 3 hours to fully charge the camera.

3.2 Inserting a Memory Card

Insert a MicroSD card up to 64GB (not included) before using your camera. Ensure that the camera power is turned OFF before inserting the card into the slot.

Notes:

1. There is only one correct direction to insert the MicroSD card into the slot. Do not force the card into the card slot as it may damage both the camera and the MicroSD card.
2. A new MicroSD card should be formatted before using. For more information, please see section 4.2.
3. We recommend a class 10 SDHC card.

3.3 Setting up Date and Time

Connect your camera to a computer and run the iON software from the MicroSD card folder. You can set the date and time on the camera via the settings page. Please see section 4.1 to open iON software

3.4 Installing the PODZ


1. Attach the PODZ to the back of the camera and rotate clockwise until the two dots are aligned.
2. Slide the latch on the PODZ to lock it.


WARNING: The latch must be locked in place to ensure the waterproof seal is activated – failure to do so may cause water leakage.




3.5 Recording Videos

Before starting to record, select the video resolution using the Video Resolution Switch. There are two methods for starting the video recording function. When the camera starts recording, there will be a short vibration indicating recording has started. The LED indicator illuminates GREEN throughout recording.

1. Whether the camera power is ON or OFF, simply slide the Recording Slide Switch  from STOP to REC to start recording.

- When your camera is OFF and the Recording Slide Switch  is at REC location, it will start recording.

To stop Recording, move the Recording Slide Switch  from REC to STOP. The camera will then enter the Standby mode.

An additional option is to hold the Power  button to stop the recording and turn the camera off.

Notes:

- An additional 432x240 (w/ 1080p/720p) video file will be created simultaneously with the recording of an HD/FHD video file. The smaller video file size allows for more efficient uploading of content to social media platforms and email.
- Changing video resolution is disabled during video recording.
- There will be around 1-2 seconds delay before the camera starts recording.
- The various video resolution options for HD and FHD can be changed under the "Settings" selection in the iON software. (see 4.1)

3.6 Taking Photos

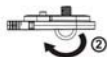
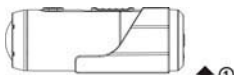
- Turn on the camera by pressing the Power  button.
- After the camera power has been turned on, press the Power  button very briefly to take a photo. A short vibration and a flash of the green LED indicates that the action was successful.

Note: Change photo resolutions and shooting mode (Single Shot, Burst Mode and Time Lapse) through the "Settings" section on the iON software.

4. Mounting Your Camera

4.1 Secure Strap

- Loop one end of the secure strap through the strap hole of the camera. You may use a pin to help thread it through the hole.
- Attach the other half to the mount.
- Clip both ends together when camera is mounted.



4.2 CamLOCK

iON's versatile CamLOCK Mount System allows you to attach the camera to any type of helmet (bike, motorcycle, ski, skydive etc.), pole, board (surf, skate, ski etc) and handlebar (bike and motorcycle).

Please refer to the specific mounting guides for instructions on how to install your mounts with your camera for particular activities.

1. Fit the screw of the CamLOCK to the tripod socket of the camera.
2. Screw the CamLOCK until it is tight on the camera.

4.3 Mounting on Your Helmet

Before mounting, make sure the surface of the helmet on which the double faced adhesive will be adhered is clean so that the helmet mount can be affixed strongly on the helmet.

1. Loosen the ball joint nut from the helmet mount.
2. Install the ball joint to the helmet mount and tighten the nut.
3. Adhere one side of the double faced adhesive to the base of the helmet mount, then peel and stick the other side to the helmet to permanently secure the mount to the helmet.
4. Attach the CamLOCK and camera into the CamLOCK socket. Ensure that the ball joint nut is tightened securely.



Notes:

1. The CamLOCK system allows you to change the angle of the camera. Simply loosen the nut, adjust the camera angle and retighten the nut.
2. You can use the same helmet mount to mount the camera on a motorcycle helmet by purchasing the other optional mounting kit.

5. iON Software Application

The iON Software Application for Windows or Mac lets you connect to a computer by USB to:

1. View and copy the files stored on the camera
2. Change the camera settings (Mac is not supported)
3. Set the Date & Time (Mac is not supported)
4. Format the camera's card
5. Link to the iON website and cloud service
6. Check the firmware update

5.1 Windows Software Application

The Windows iON.exe Software Application comes installed on the camera. To run the application:

1. Insert a MicroSD card with at least 2MB free space into the camera.
2. Press the Power button to turn the camera on.

3. Connect your camera to the PC via the camera's USB cable.
4. Open the MicroSD folder and you will find the file "iON.exe".
5. Double click the file to open

5.2 Mac Software Application

1. Visit the ion website (www.iontheaction.com) to download the latest Mac software application version.
2. Insert a MicroSD card with at least 2MB free space into the camera.
3. Press the Power button to turn the camera on.
4. Connect your camera to the Mac via the camera's USB cable.
4. Use Finder to locate and open the camera as a new device usually called "No Name". You should see a folder "DCIM" and the file iON.exe when you open it.
6. Drag the downloaded file to the new device and put it with DCIM and iON.exe.
7. Double click the newly loaded file to run the Mac Application. The application will not run if it is not in on the camera's card.

Note: The camera can be connected to any plug & play Windows or Mac system and accessed as a removable disk drive. Files can be viewed and copied without the use of the application.

6. Signing Up for Free iON Cloud Storage

You can sign up for your 8GB of free Cloud storage simply go to www.iontheaction.com/ioncloud and follow the steps. The iON Cloud is a great way to store and share your photos and video footage for free.

7. Connecting Your Camera to a HDTV

You can connect your camera to a HDTV with an HDMI cable (not included). Once it is connected you can:

1. Take photos or videos by using your HDTV as a viewfinder
2. Playback any photo or video files saved in your camera
3. Delete any files saved on the camera
4. Format the MicroSD Card

8. Air Pro 3 Wi-Fi (this section applies to Air Pro 3 WiFi model or optional WiFi PODZ accessory ONLY)

A Wi-Fi PODZ turns your iON Air Pro 3 into a Wi-Fi access point. View the camera's videos/photos and change camera settings from your mobile phone, tablet or computer. Transfer files back to your computer or mobile device. You can also live-stream the camera view, start/stop recording or take a photo.

8.1 Air Pro 3 WiFi Package Content

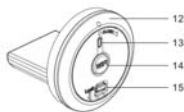
In addition to the package contents of Air Pro 3 (Refer to section 1), the Air Pro 3 Wi-Fi has included a Wi-Fi PODZ for performing the Wi-Fi functionality.



| | |
|------------|----------------------------|
| Wi-Fi PODZ | Rotate to seal the camera. |
|------------|----------------------------|

8.2 Wi-Fi PODZ Functional Parts

In addition to the functional parts of Air Pro 3(Refer to items 1 to11 in section 2), Air Pro 3 Wi-Fi has additional functional parts on the Wi-Fi PODZ.




| | | |
|----|---------------------|---------------------------|
| 12 | Wi-Fi PODZ | Rotate to seal the camera |
| 13 | Wi-Fi LED indicator | Shows the Wi-Fi status |
| 14 | Wi-Fi Power button | Turns the Wi-Fi on or off |
| 15 | PODZ Latch | Locks the PODZ |

WARNING: The latch must be locked in place to ensure the waterproof seal is activated – failure to do so may cause water leakage.

8.3. Using the Wi-Fi PODZ

8.3.1 Installing and turning on the Wi-Fi PODZ

1. Remove your standard PODZ from the back of the camera and place your Wi-Fi PODZ into the camera PODZ socket. (follow steps 1 and 2 under section 3.4)
2. Press and hold the Power  button to turn on your camera.
3. Press the Wi-Fi power button on the Wi-Fi PODZ to turn on your Wi-Fi. The blue LED lights up to indicate the Wi-Fi is warming up. It will take around 15-20 seconds for the Wi-Fi to warm up and become connectable. The LED will flash when the Wi-Fi function is active or connected.
4. Press the Wi-Fi power button to turn off the Wi-Fi anytime.



Note: Wi-Fi will drain your camera battery more rapidly when activated. Turn the Wi-Fi off if you are not using it to change settings or upload content.

8.3.2 Connecting the Camera to Your Computer

1. Turn on your camera and Wi-Fi PODZ.
2. Go to the network settings of your PC and choose Wi-Fi settings. Search the network, find and click "WIFIPODZ".
3. Enter password "123456789" and to connect to your camera.
4. Open your Internet browser and input "192.168.1.2". You will then be able to view the files stored in your camera.

8.3.3 Connecting the Camera to Your Smart Device (App)

1. Search iontheaction app in your devices app store.
2. Download and install the app to your smart device.
3. Turn on your Wi-Fi PODZ.
4. Go to the network settings of your device and choose Wi-Fi settings. Search the network, find and click "WIFIPODZ".
5. Enter password "123456789" to connect to your camera.
6. Open your app.
7. Please refer to the app page for detailed operating instructions.

9. Sealing Your Camera to prevent water damage

The Waterproof Housing (standard PODZ on iON Air Pro 3 camera and Wi-Fi PODZ in Air Pro 3 Wi-Fi) allows you to operate the camera up to 10 meters or 30 feet under water. You must seal the camera with the PODZ in order to protect the camera when using it in wet or moist conditions.

Notes:

1. The rubber seal on the PODZ forms the waterproof barrier to protect the camera in wet and underwater conditions. You must keep this seal clean as a single strain of hair or grain of sand can cause leakage into the product.
2. After every use in salt water, you will need to rinse the outside of the product and the seal with non-salt water and dry. Not doing this can cause corrosion in the product or failure in the seal, in turn, damaging the product.

Warning:

Please ensure you install and lock the PODZ correctly before using the camera to avoid water damage. Failure to properly seal your camera can result in leaks that damage or destroy your camera. Your warranty does not cover water damage resulting from user damage.

10. Troubleshooting

| Problems | Causes | Solutions |
|--|---|---|
| 1. LED flashes and the camera turns off 2. The iON camera will not turn on. | Battery is depleted | Recharge the camera |
| Green LED flashes during recording | Low battery | Recharge the camera |
| Cannot take photos or video (Blue LED flashes) | Memory full | Replace with a memory card with space available . |
| Cannot take photos or video (Blue LED flashes) | 1. MicroSD card is not inserted 2. MicroSD card has not been formatted properly. | 1. Insert a MicroSD card 2. Format the MicroSD card on a PC |
| Cannot find removable disk after connecting the camera to the computer. | Connection failure. | 1. Make sure all cable connections are secured and restart the computer if necessary. 2. Try a different USB port. |

11. Specifications

| | |
|-------------|--|
| Sensor | 12 Mega pixel sensor |
| Lens | 180° super wide angle field of view |
| Focus range | 0.4m - ∞ |
| Video | FHD 1080p30+432x240p15 (Dual Stream), PIV size 1920x1080 1920x1080p60 |
| | HD 720p30+432x240p30 (Dual Stream), PIV size 1280x720 1280x720p120, 1280x720p60, QVGAp120, WQVGAp120 |
| | Format: H.264 compression, saved as MOV file |
| | Dual video files for easy sharing |
| Photo | 12.0 Mega Pixels (4000x3000) |
| | 5.0 Mega Pixels: (2560x1920) |
| | Format: JPEG |
| | Capture Modes: Single, Burst-shot*, Time lapse* |
| Audio | Built-in high quality microphone |
| | 2.5mm External microphone (not included) |
| | AAC Compression, Automatic Gain Control |
| Storage | MicroSD/MicroSDHC with minimum Class 6 up to 64GB (not included) |
| | Average Recording Times: about 4 hours (using 64GB mSD card in 1080p30/720p60) |
| Connection | USB2.0 (for data connection and battery charging) |
| | HDMI |
| | External Microphone |
| Power | Built-in 1200 mAh Rechargeable Li-Polymer Battery |
| | Battery Life: Approx. 2 hrs/(1 hr when operating with Wi-Fi PODZ in Air Pro 3 Wi-Fi) |
| Housing | High quality Aluminum barrel and rubberized finishing |
| | Depth up to 30 feet / 10 meters |
| Dimension | 40 x 40 x 108 mm |
| Weight | ~127.8(w/ PODZ), ~133.2g (w/ Wi-Fi PODZ) |

* Settings can be changed through iON software or Mobile Apps.

12. System Requirements

| | |
|------------------|--|
| Operating system | Windows® 7/XP SP3 /Vista and Mac 10.5 or above |
| CPU | Pentium III or above |
| RAM | At least 64MB |
| Interface | USB 2.0 port |

IMPORTANT

- Keep the lens clean. Dirt and fingerprints will affect the quality of the picture.
- Close the PODZ properly for optimum water sealing. Do not open under water.
- Rinse the camera with clean water after use and keep it dry for storage.
- Please refer to the detailed operation instructions in the user manual

TRADEMARK INFORMATION

© 2013 World Wide Licenses Limited.

® The iON logo is a registered trademark of World Wide Licenses Limited. CamLOCK, PODZ, Shoot/Share and Air Pro 3 and their respective logos are trademarks or registered trademarks of World Wide Licenses Limited in the United States and other countries. Copyright © 2013. All Rights Reserved.

FCC Statement

Caution Statement

“Modifications not approved by the party responsible for compliance could void the user’s authority to operate the equipment.”

Instruction Statement

NOTE: This equipment has been tested and found to comply with the limits for a Class B digital device, pursuant to Part 15 of the FCC Rules. These limits are designed to provide reasonable protection against harmful interference in a residential installation. This equipment generates, uses and can radiate radio

frequency energy and, if not installed and used in accordance with the instructions, may cause harmful interference to radio or television reception, which can be determined by turning the equipment off and on, the user is encouraged to try to correct the interference by one or more of the following measures:

- Reorient or relocate the receiving antenna.
- Increase the separation between the equipment and receiver.
- Connect the equipment into an outlet on a circuit different from that to which the receiver is connected.
- Consult the dealer or an experienced radio/ TV technician for help.

WARNING: THE MANUFACTURER IS NOT RESPONSIBLE FOR ANY RADIO OR TV INTERFERENCE CAUSED BY UNAUTHORIZED MODIFICATIONS TO THE DEVICE. ANY SUCH MODIFICATIONS COULD VOID THE USER'S AUTHORITY TO OPERATE THE EQUIPMENT.

This device complies with Part 15 of the FCC Rules. Operation is subject to the following two conditions: (1) this device may not cause harmful interference, and (2) this device must accept any interference received, including interference that may cause undesired operation.

RF Exposure Information (SAR)

This device meets the government's requirements for exposure to radio waves. This device is designed and manufactured not to exceed the emission limits for exposure to radio frequency (RF) energy set by the Federal Communications Commission of the U.S. Government.

The exposure standard employs a unit of measurement known as the Specific Absorption Rate, or SAR. The SAR limit set by the FCC is 1.6 W/kg. Tests for SAR are conducted using standard operating positions accepted by the FCC with the EUT transmitting at the specified power level in different channels. The highest SAR value for the device as reported to the FCC is 0.98 W/kg when placed next to the body.



FCC ID: NW71022

Questions?
Need Some Help?
This manual should
help you understand
your new product.

If you still have
questions,
visit our website:
www.iontheaction.com

Like Us:
www.facebook.com/iontheaction

Tweet Us:
www.twitter.com/iontheaction