

8063us01top

Manufactured and distributed
by © 2007 WowWee Ltd.
All Rights Reserved.

WowWee Limited

Asia Office
Unit 301A-C, 92 Granville Rd
T.S.T. East, Hong Kong

WowWee Group

North America Office
6600 Decarie, Suite 200
Montreal, QC H3X 2K4, Canada

Consumer Hotline: 1-800-310-3033
Email: support@wowwee.com

www.wowwee.com

CAUTION

Changes or modifications not expressly approved by the party responsible for compliance could void the user's authority to operate the equipment.

This device complies with Part 15 of the FCC Rules. Operation is subject to the following two conditions: (1) This device may not cause harmful interference, and (2) This device must accept any interference received, including interference that may cause undesired operation.

NOTE

This equipment has been tested and found to comply with the limits for a class B digital device, pursuant to part 15 of the FCC rules. These limits are designed to provide reasonable protection against harmful interference in a residential installation. This equipment generates, uses and can radiate radio frequency energy and, if not installed and used in accordance with the instructions, may cause harmful interference to radio communications.

However, there is no guarantee that interference will not occur in a particular installation. If this equipment does cause harmful interference to radio or television reception, which can be determined by turning the equipment off and on, the user is encouraged to try and correct the interference by one or more of the following measures:

- Reorient or relocate the receiving antenna
- Increase the separation between the equipment and receiver
- Connect the equipment into an outlet on a circuit different from that to which the receiver is connected
- Consult the dealer or experienced radio/TV technician for help

WARNING:

Changes or modifications to this unit not expressly approved by the party responsible for compliance could void the user's authority to operate the equipment.

Please keep these instructions as they contain important information.

We recommend that you retain our address for future reference.
Product and colors may vary. Packaging printed in China.
This product is not suitable for children under 3 years because of small parts - choking hazard.

MADE IN CHINA

User Manual

Item No. 4031 | Ages 8+

Thank you for purchasing the FlyTech Dragonfly from WowWee!

Introduction

FlyTech™ Dragonfly is the world's first radio-controlled flying insect. An ultra-light, dual-wing design and "high-flex", crash-resistant structure make Dragonfly safe to fly indoors or outdoors. Dragonfly is an easy-to-fly aeronautical marvel that looks and sounds like a genetic hybrid of the real thing!

You can use FlyTech Dragonfly both indoors and outdoors. Its wings flap like real dragonfly wings and it is quick to recharge with a long play duration.

Take a few moments to look through this user manual to get your FlyTech Dragonfly up and soaring!

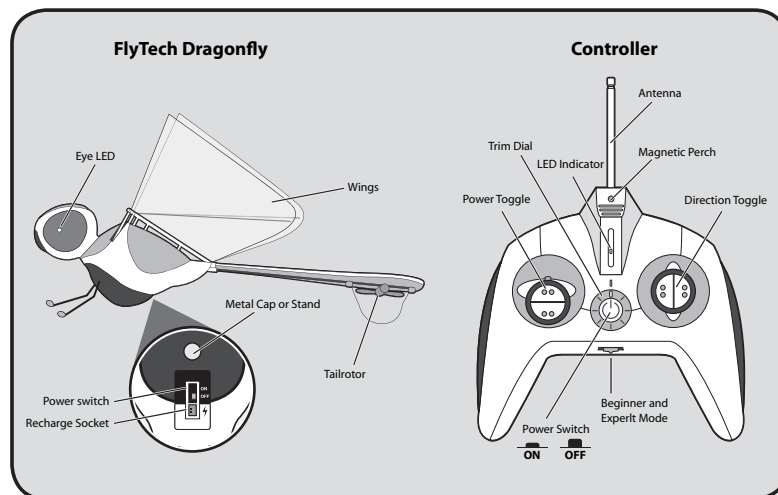
Note: When using the FlyTech Dragonfly, some adult supervision is required. Do we need this here? Is QC requiring it?)

Package contents

This package contains:

- | | | |
|-------------------------|---------------------|------------------------|
| 1 x FlyTech Dragonfly | 1 x Controller | 1 x Detachable antenna |
| 2 x Sets of spare wings | 1 x Spare propeller | |

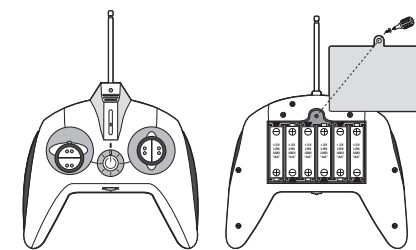
Quick overview



Batteries

Note that adult supervision is required to install the batteries.

The FlyTech Dragonfly controller requires six "AA" alkaline batteries (not included). Install the batteries as follows:



Attention: Important Battery Information

- Use only fresh batteries of the required size and recommended type
- Do not mix old and new batteries, different types of batteries [standard (Carbon-Zinc), Alkaline or rechargeable] or rechargeable batteries of different capacities
- Remove rechargeable batteries from the toy before recharging them
- Rechargeable batteries are only to be charged under adult supervision
- Please respect the correct polarity, (+) and (-)
- Do not try to recharge non-rechargeable batteries
- Do not throw batteries into the fire
- Replace all batteries of the same type/brand at the same time
- The supply terminals are not be short-circuited
- Remove exhausted batteries from the toy
- Batteries should be replaced by adults
- Remove batteries if the toy is not going to be played with for some time

1. Open the battery compartment on the controller using a Philips screwdriver (not included) to remove the screw on the battery compartment door. (picture)
2. Insert the batteries according to the diagram. Ensure that the positive and negative polarities match the inside illustrations in the battery compartment.
3. Replace the battery compartment door and replace the screw using the screwdriver. Do not overtighten.

Antenna

You will need to attach the antenna to the controller before you can begin using the dragonfly. To do so:



Screw the antenna clockwise into the top of the controller (as illustrated in the diagram) until it stops turning. Do not overtighten.

For optimal performance, fully extend the antenna on the controller when flying the dragonfly.

FCC Note:

The unique antenna provided has been authorised for use with this equipment. Installation of any other antenna is not authorised under FCC regulations. The manufacturer is not responsible for any radio or TV interference caused by unauthorised modification of the product.

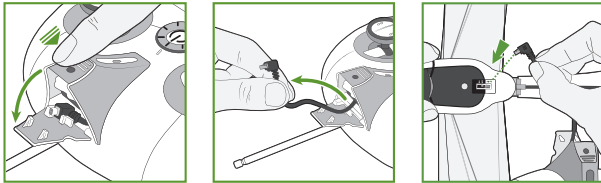
Charging FlyTech Dragonfly

Before flying the FlyTech Dragonfly for the first time (or if you have depleted a charge on the dragonfly), you will need to recharge it. A typical charge takes between 15 and 20 minutes and allows up to 10 minutes of flying time, depending upon the battery life.

NOTE: If the charge time begins to exceed 25 minutes, you should replace all the batteries in the controller with fresh alkaline batteries.

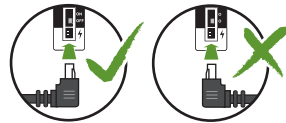
To charge the dragonfly:

1. On the controller, push down on the magnetic perch. The cord compartment door will open.
2. Pull the end of the cord from the compartment as shown.
3. Hold the dragonfly firmly by its body, and then insert the cord into the socket as shown. Pay close attention to the orientation of the socket and the connector on the cord.



NOTE: Make sure that the dragonfly is turned off before you recharge it.

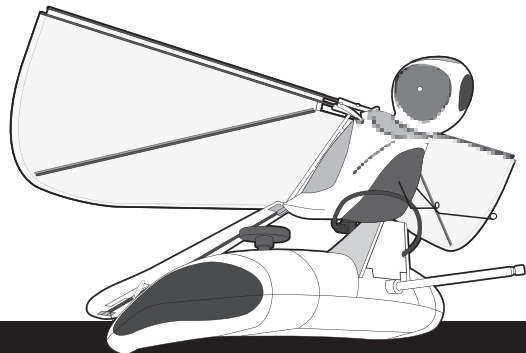
IMPORTANT: Do not force the cord into the socket – this can damage the socket. The exposed silver contact points on the side of the controller plug should line up with the cut-away side of the socket.



NOTE: The controller is equipped with a sleep feature, that is, the LED indicator will turn off if the controller is idle for more than 1 minute. Therefore, when charging FlyTech Dragonfly, the LED indicator light might turn off, however, the controller will continue to charge the dragonfly. To turn the LED indicator light back on, press the power button on the controller until the LED indicator lights up again.

4. Press the power button on the controller to turn it on.

If the connector on the cord is properly connected to the socket, the eyes on the dragonfly will pulse slowly to indicate that it is charging.



NOTE: You can rest the dragonfly on the controller while it is charging by placing the metal perch point (on the dragonfly) on the magnetic perch (on the controller).

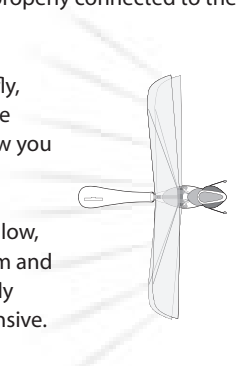
5. When the FlyTech Dragonfly is fully charged, its eyes will stop pulsing, and turn off.

Note that the eyes will blink rapidly if there is no signal from the controller. When charging the dragonfly, make sure the cord from the controller is properly connected to the socket on the dragonfly.

6. Carefully unplug the charging cord from the dragonfly, then replace the cord back in the compartment of the controller and then close the compartment door. Now you are ready to fly!



NOTE: When the dragonfly's is running low, you will notice his eyes will begin to dim and the sound of the motor on the dragonfly begin to splutter or become less responsive.

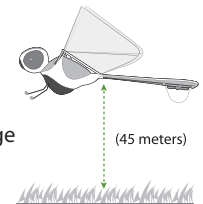


Flying

When the dragonfly is fully charged and ready to fly, you can take your FlyTech Dragonfly to the skies!

Location

You can operate FlyTech Dragonfly both indoors and outdoors. The maximum recommended range for the controller is 45 meters (150 feet).



Flight modes

You can operate FlyTech Dragonfly in one of two modes: Beginner or Expert. To familiarize yourself with the controls, start with Beginner mode. Beginner mode allows for more gentle turns, and Expert mode allows for sharper and faster turns. Once you are comfortable with the controls, you can switch to Expert mode.



Beginner mode



Expert mode

To fly the dragonfly

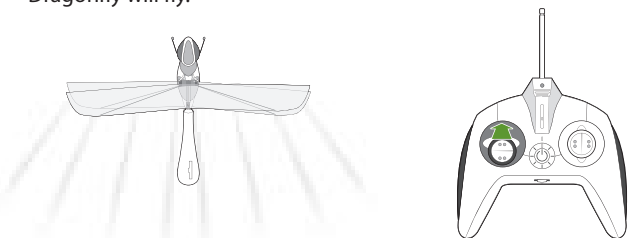
NOTE: Before you fly the dragonfly, make sure the rear rotor is not spinning before you launch it (otherwise it might not fly in the desired direction). If the rotor is spinning, adjust the trim dial on the controller until it stops. The trim dial is the circular dial around the power button on the controller.

To operate the FlyTech Dragonfly:

1. Turn the controller on by pressing the power switch. The LED indicator light will light up.
2. Extend the antenna on the controller.
3. Turn the FlyTech Dragonfly on by setting the switch on the dragonfly to ON.

Note that if the controller is off when you turn on the dragonfly, the dragonfly's eyes will blink.

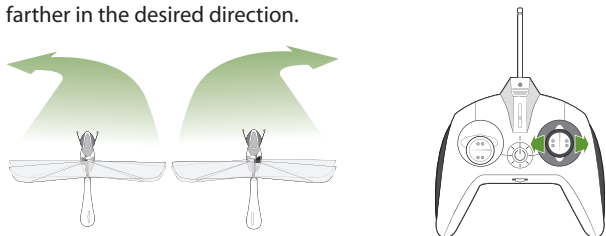
4. On the controller, push the left stick upwards to increase speed of the wing-flapping. The left stick (throttle) controls how high and fast your FlyTech Dragonfly will fly.



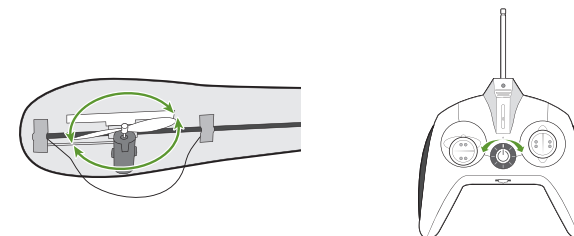
5. Launch FlyTech Dragonfly from your hand with a gentle horizontal motion. The dragonfly will flutter away from you.

NOTE: Do not throw the dragonfly when launching.

6. On the controller, push the right stick (directional) to the left to turn left, or push the stick to the right to turn right. Use smaller movements on the controller to make the dragonfly. To make the dragonfly turn more quickly, push the stick farther in the desired direction.



7. Use the trim dial to adjust the straight line flight of the dragonfly. If the dragonfly naturally steers to the left, slowly turn the trim dial in a clockwise direction to adjust the steer. If the dragonfly steers to the right, slowly turn trim dial in a counter-clockwise direction. Avoid using the right (directional) stick while adjusting the trim as your trim settings will be inaccurate.



You can also use the trim dial to make the dragonfly fly in constant circles. Turn the trim dial clockwise to fly the dragonfly in a counter-clockwise circle, and vice versa.

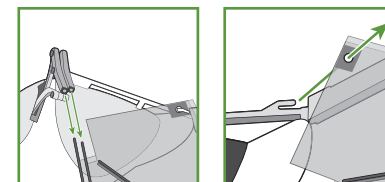
NOTE: Adjusting the trim can make the dragonfly's tail rotor spin even when not flying.

Replacing the wings

Note that adult supervision is suggested when replacing the wings.

You can replace the original wings on your dragonfly if they become damaged. A spare set of wings is included in the FlyTech Dragonfly package. To replace the damaged wings, do the following:

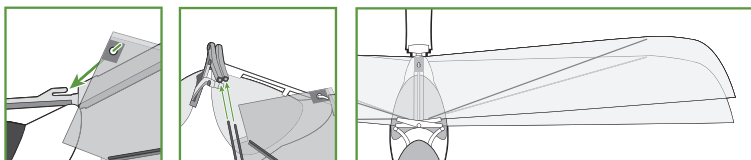
1. Make sure the controller and the dragonfly are turned off.
2. Remove the old pair of wings. There are two sets of wings on the dragonfly. Pull the first pair of wings off the hook at the end of the thorax area. Then, gently pull the wing rods out from the sockets. Repeat for the second pair of wings.



Be careful not to touch any broken edges.

Note: If one of the rods breaks off where it meets the rod socket, and a piece of the rod becomes stuck inside, you can push a sewing needle through the socket from the other end to dislodge the piece of broken rod.

Install the new pair as illustrated, by reversing the instructions for removing the damaged wings. Slide the first pair of wing rods into their sockets, and then hook the rear part of the wings onto the hook at the end of the thorax. Repeat for the second pair of wings.

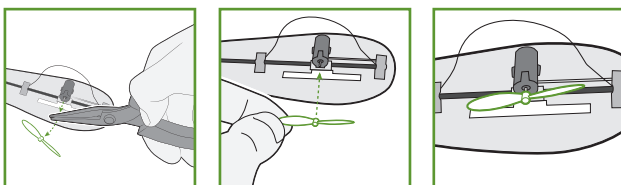


Replacing the propeller

Note that adult supervision is recommended when replacing the propeller.

You can replace the original rotor propeller on your dragonfly if the original one becomes damaged. A spare propeller is included in the FlyTech Dragonfly package. To replace the damaged rotor propeller:

1. Make sure the controller and the dragonfly are turned off before removing the propeller.
2. Using a pair of pliers, grasp the damaged rotor propeller and pull it off the axle as indicated in the diagram.
3. Insert the new rotor propeller into the axle carefully, making sure it is secure.
4. Turn the propeller manually to make sure it does not snag on the tail of the dragonfly.



FAQ

The following is a list of frequently asked questions regarding the FlyTech Dragonfly.

- Q:** My dragonfly won't fly straight when I am flying it indoors! ...
- A:** Your problem might be due to indoor sources of air currents keeping the dragonfly from flying straight... Try turning off fans and closing air conditioning vents. If there are open windows, try closing them to avoid creating drafts.
- Q:** My dragonfly won't fly straight when I am flying it outdoors! ...
- A:** You might be flying the dragonfly in conditions that are too windy... Try to find a location that is sheltered from the wind, such as between buildings or in a walled-off courtyard. For optimal operation, avoid flying the dragonfly in wind speeds higher than 1.75 km/h (4mph).
- Q:** The tail rotor on my dragonfly keeps spinning, and I can't stop it! ...
- A:** You have probably turned the trim dial. The trim dial controls the rotor speed. Adjust the trim by slowly turning the trim dial on the controller until the rotor stops spinning.
- Q:** My Dragonfly stops working when it gets farther away. ...
- A:** Your dragonfly is most likely out of range for the controller. The recommended range for controlling your dragonfly is or less from the controller. To fully take advantage of the flight control, make sure the antenna on the controller is fully extended.
- Q:** My Dragonfly won't stay up, even after charging ...
- A:** The batteries in the controller might be getting weak, in which case, you will need to change the batteries in the controller. The batteries will usually last about ten flight-recharge cycles. You should always turn the controller and the dragonfly off when not in use. Note that as you use the dragonfly, the battery strength in the dragonfly will get and the play time will shorten over time.

If you have questions that are not answered in this manual, refer to the WowWee support site: www.wowwee.com