



HORNET

CONTROL THIS BUZZING FAST PREDATOR!

*Prima & Williams (WOWWEE)
Page: 43*

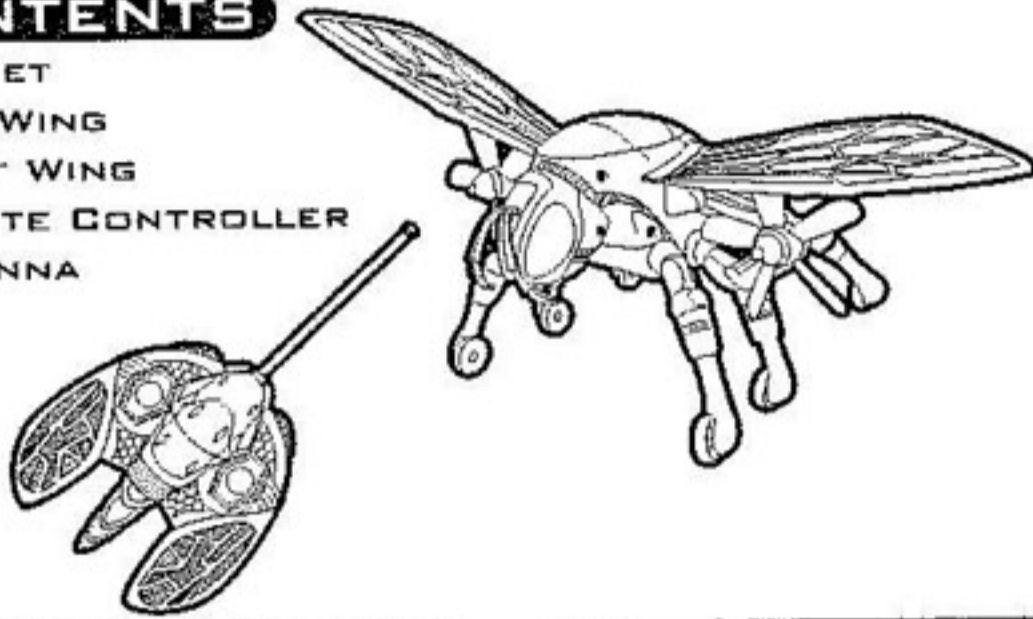
WARNING:
CHOKING HAZARD - Small parts.
Not for children under 3 years.

BATTERY REQUIREMENTS
3x AA
1.5V BATTERIES
(HORNET UNIT)
1x 9V
(REMOTE CONTROLLER)
BATTERIES NOT INCLUDED

HORNET OPERATING INSTRUCTIONS ADULT ASSEMBLY REQUIRED.

CONTENTS

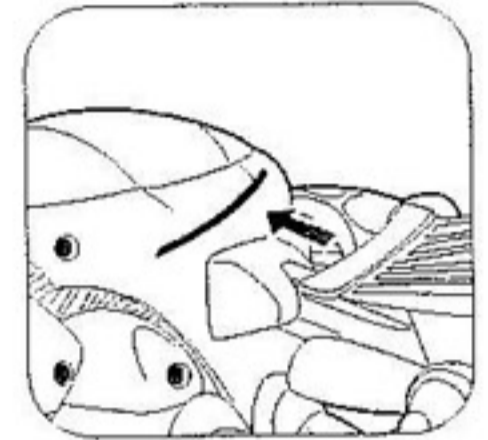
- HORNET
- LEFT WING
- RIGHT WING
- REMOTE CONTROLLER
- ANTENNA



ASSEMBLY

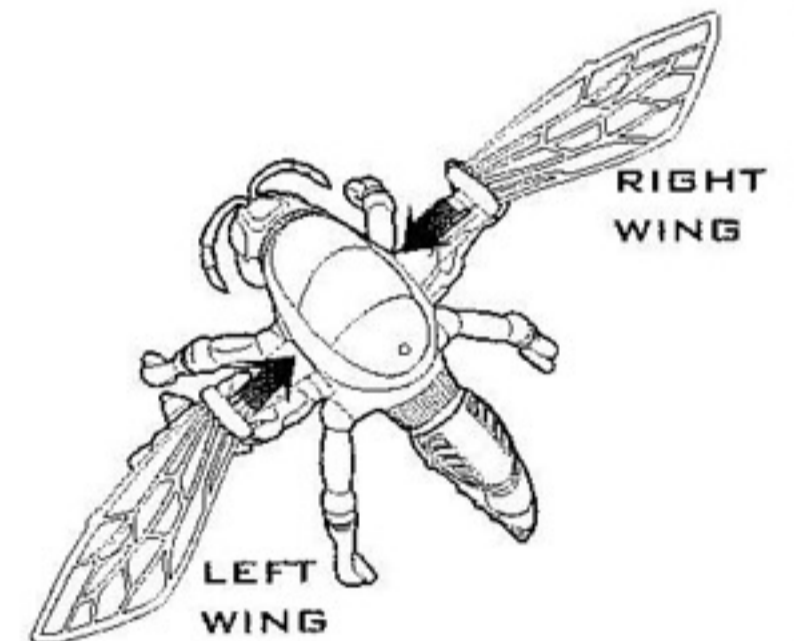
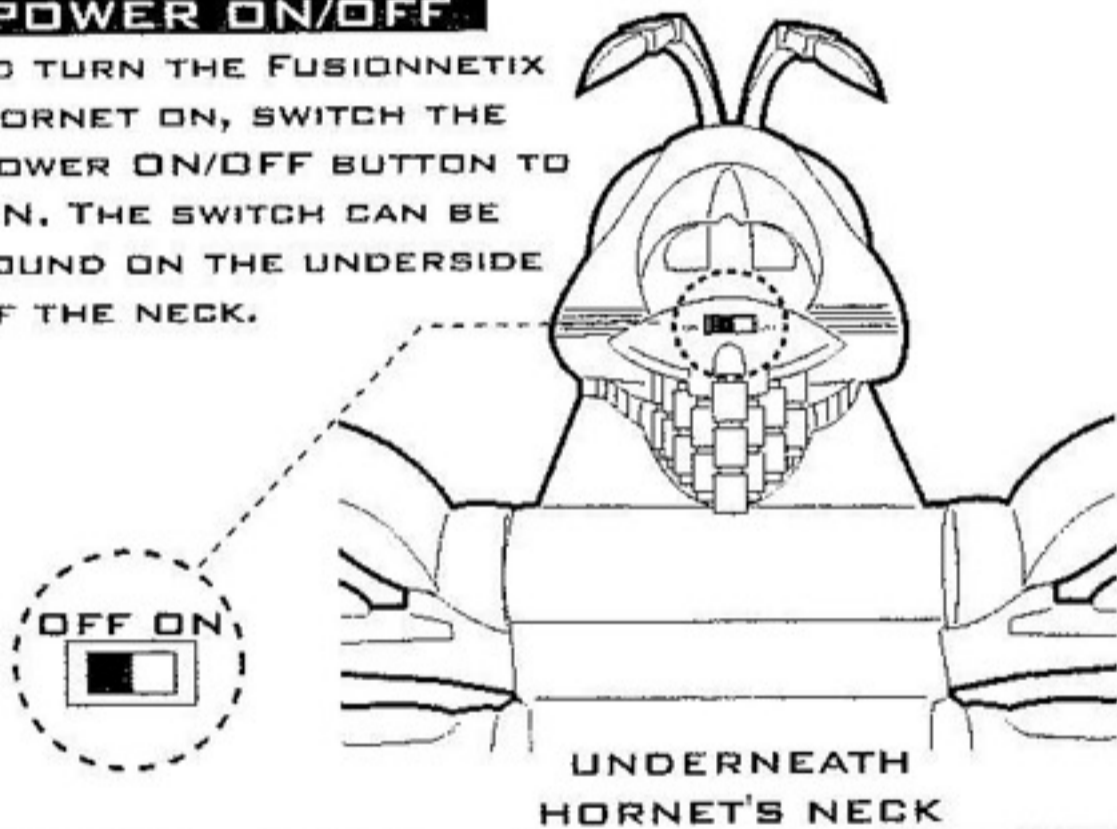
ATTACH THE HORNET'S WINGS!
BEFORE YOU BEGIN TO PLAY, ASSEMBLE THE
REMOTE CONTROLLER AND HORNET'S WINGS.

1. REMOTE CONTROLLER: SCREW-IN THE
ANTENNA INTO THE REMOTE CONTROLLER,
SEE BATTERY AND POWER ON/OFF
DIAGRAM.
2. WINGS: TAKE THE LEFT WING
AND RIGHT WING AND INSERT
THEM INTO EITHER SIDE OF THE
BODY UNTIL EACH WING IS SECURE
AS SHOWN.



POWER ON/OFF

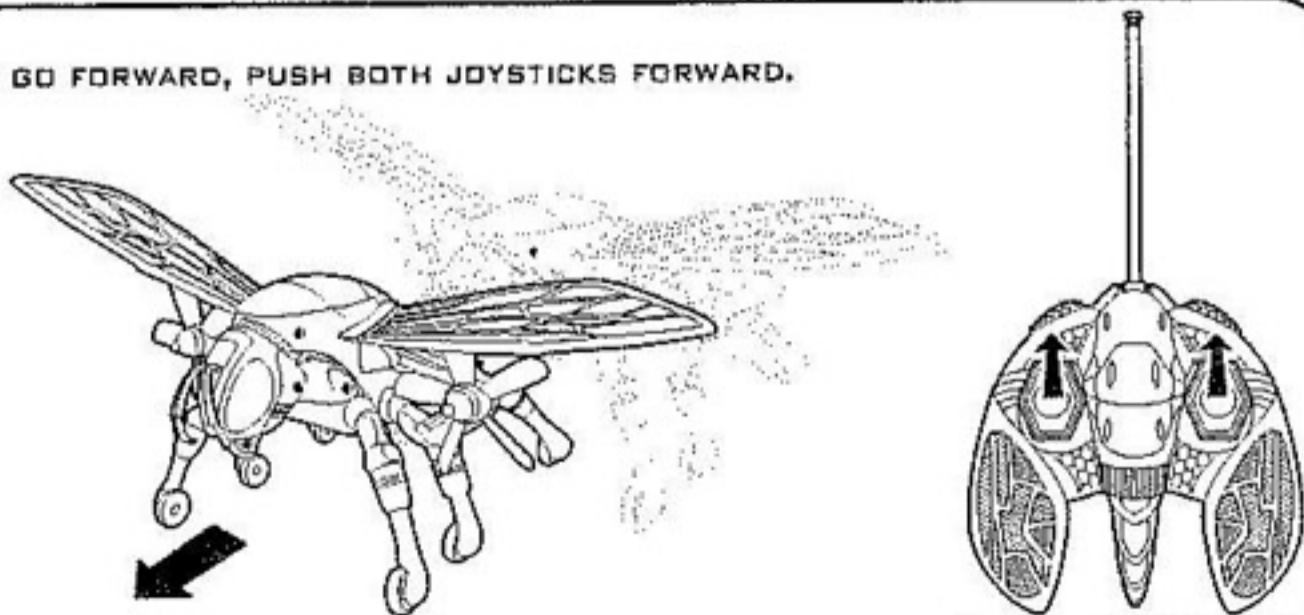
TO TURN THE FUSIONNETIX
HORNET ON, SWITCH THE
POWER ON/OFF BUTTON TO
ON. THE SWITCH CAN BE
FOUND ON THE UNDERSIDE
OF THE NECK.



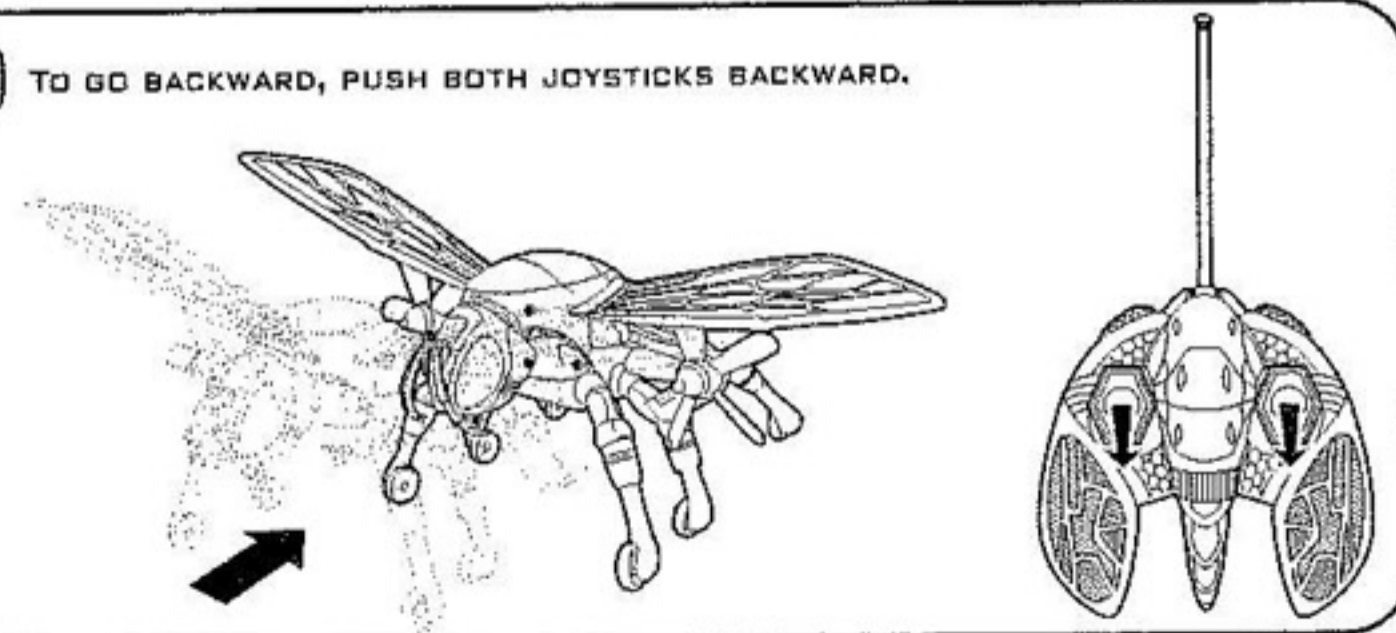
DIRECTION CONTROL:

THE HORNET'S EYES WILL GLOW EVERY TIME YOU PUSH THE JOYSTICKS! FOR BEST RESULTS, REMEMBER TO FULLY EXTEND THE REMOTE CONTROLLER'S ANTENNA DURING PLAY.

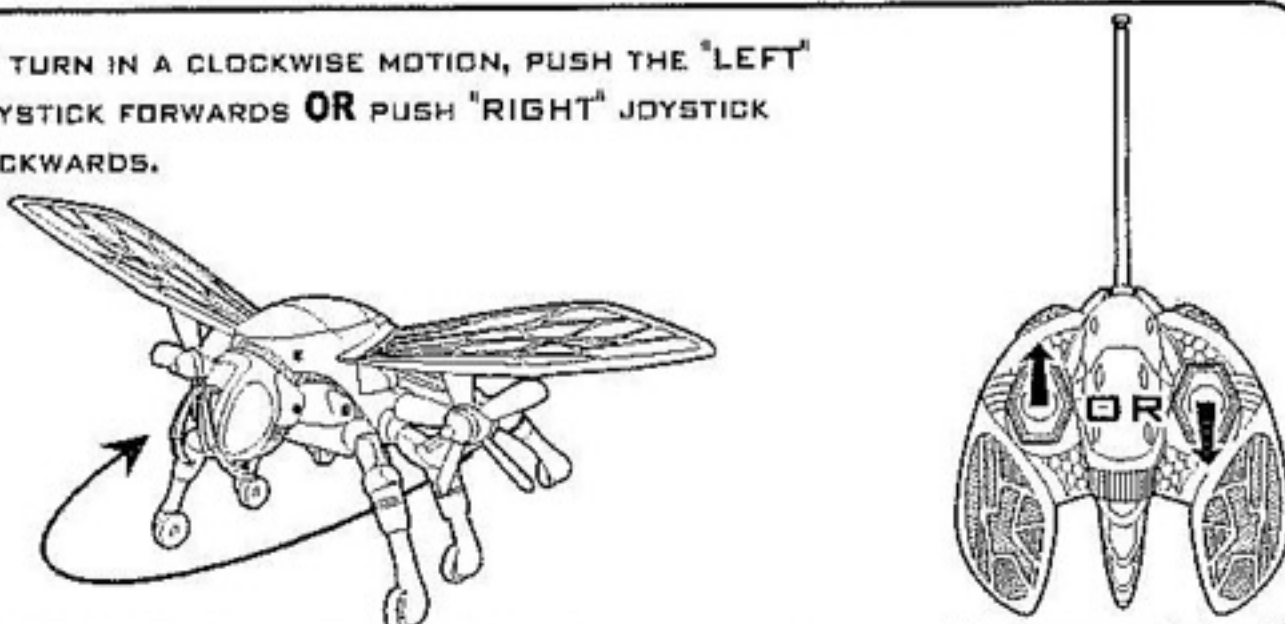
- 1 TO GO FORWARD, PUSH BOTH JOYSTICKS FORWARD.



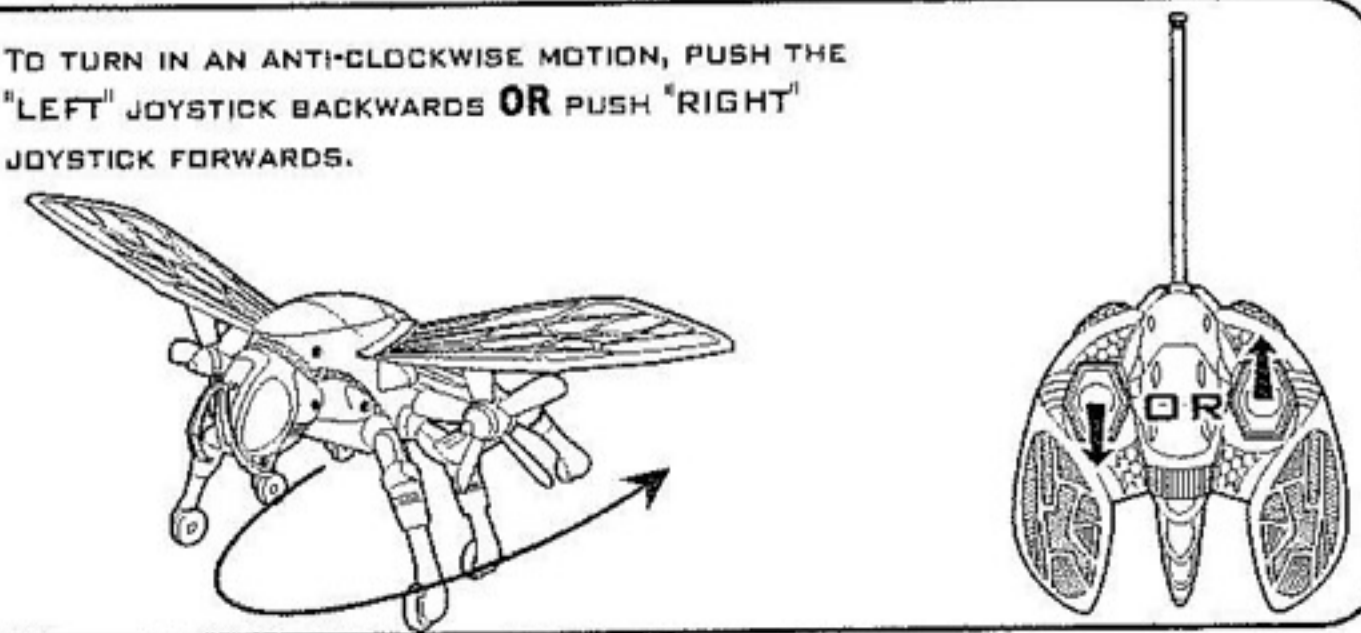
- 2 TO GO BACKWARD, PUSH BOTH JOYSTICKS BACKWARD.

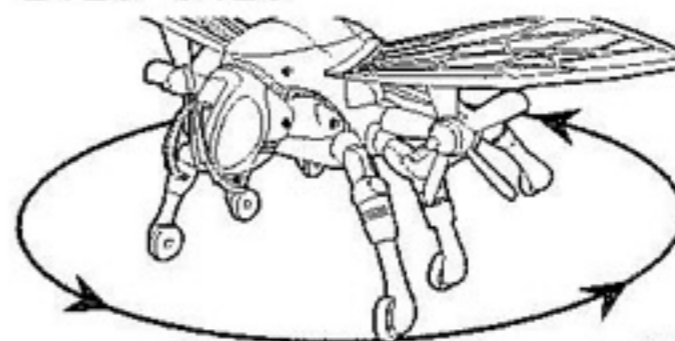
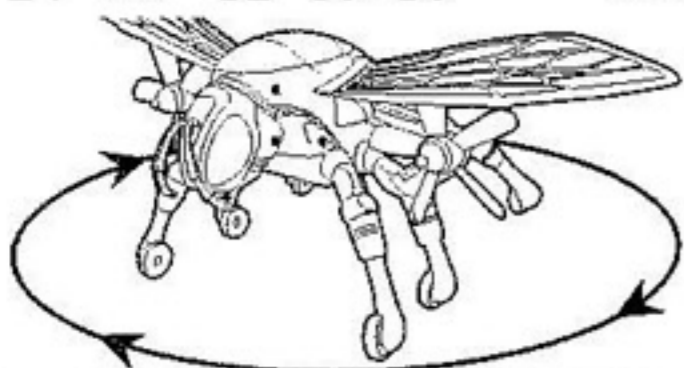


- 3 TO TURN IN A CLOCKWISE MOTION, PUSH THE "LEFT" JOYSTICK FORWARDS OR PUSH "RIGHT" JOYSTICK BACKWARDS.



- 4 TO TURN IN AN ANTI-CLOCKWISE MOTION, PUSH THE "LEFT" JOYSTICK BACKWARDS OR PUSH "RIGHT" JOYSTICK FORWARDS.





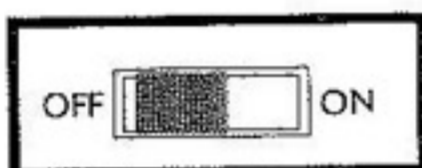
PLEASE NOTE: THE ILLUMINATED RED LIGHT ON THE HAND CONTROLLER INDICATES THAT THE HAND CONTROLLER IS IN OPERATION.

ATTENTION!!! IMPORTANT BATTERY INFORMATION

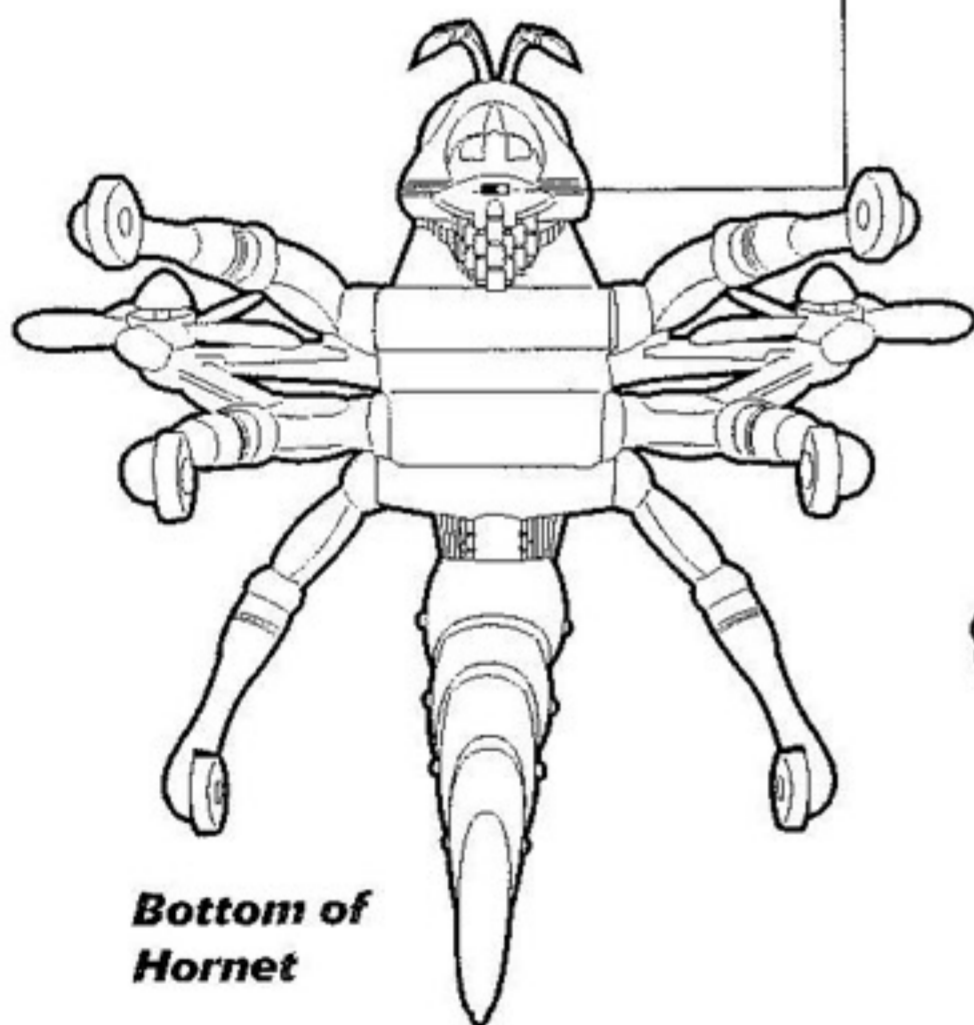
- Use only fresh batteries of the required size and recommended type.
- Do not dispose of batteries in fire, batteries may explode or leak.
- Do not try to open batteries.
- Do not mix old and new batteries.
- Do not mix alkaline, standard (Carbon zinc) or rechargeable (Nickel-cadmium) batteries, do not mix rechargeable batteries of different capacities.
- Replace all batteries of same type / brand at the same time.
- Batteries should be replaced by adults because of small parts.
- Batteries are to be inserted with the correct polarity.
- Exhausted batteries are to be removed from the toy.
- The supply terminals are not to be short-circuited.
- Non-rechargeable batteries are not to be recharged.
- Rechargeable batteries not recommended.
- Remove rechargeable batteries from the toy before being charged.
- Rechargeable batteries are only to be charged under adult supervision.

BATTERY AND POWER ON/OFF DIAGRAM

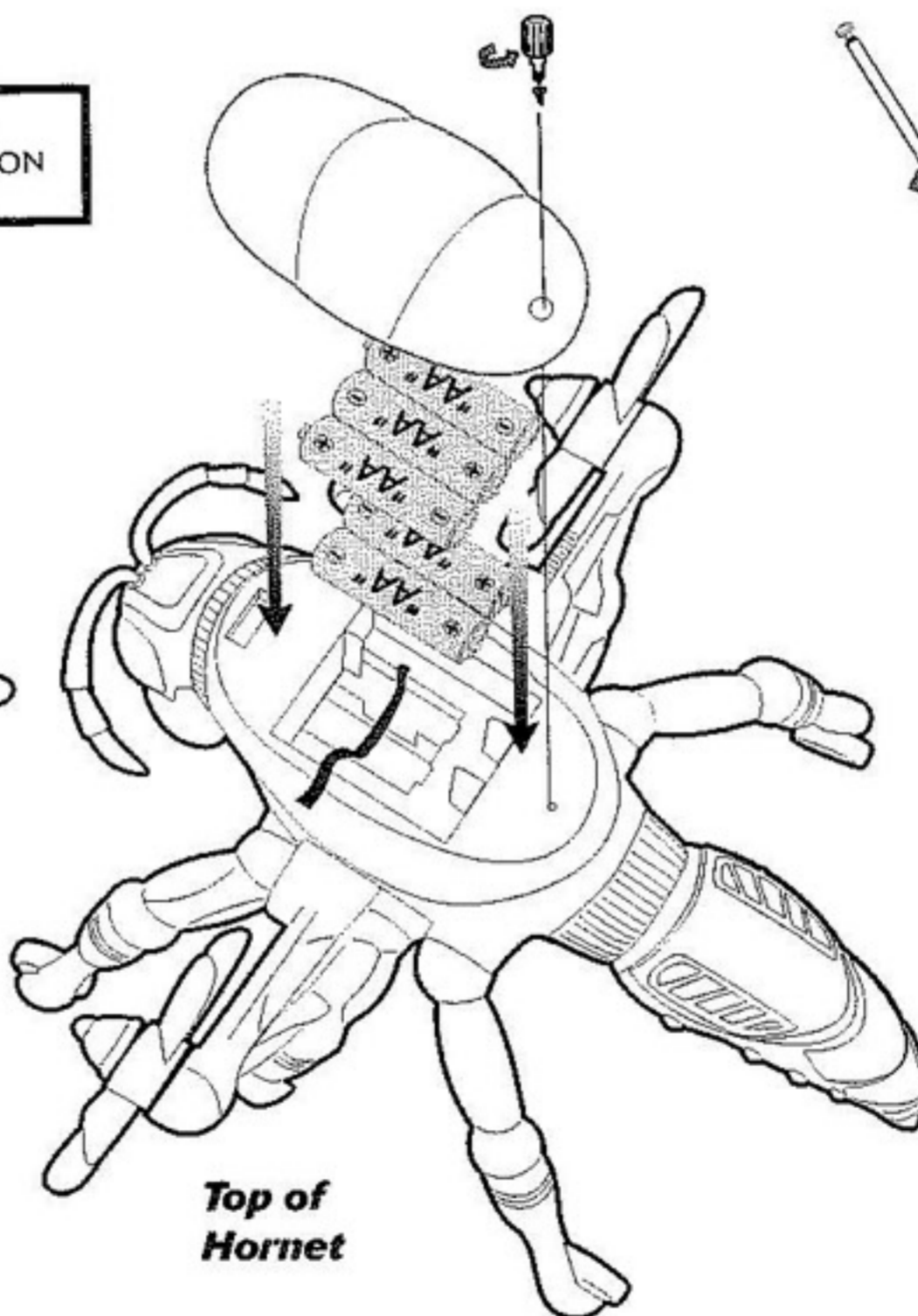
BATTERY REQUIREMENTS
 5x AA Batteries (Hornet Unit)
 1x 9V Battery (Remote Controller)
 Batteries not included



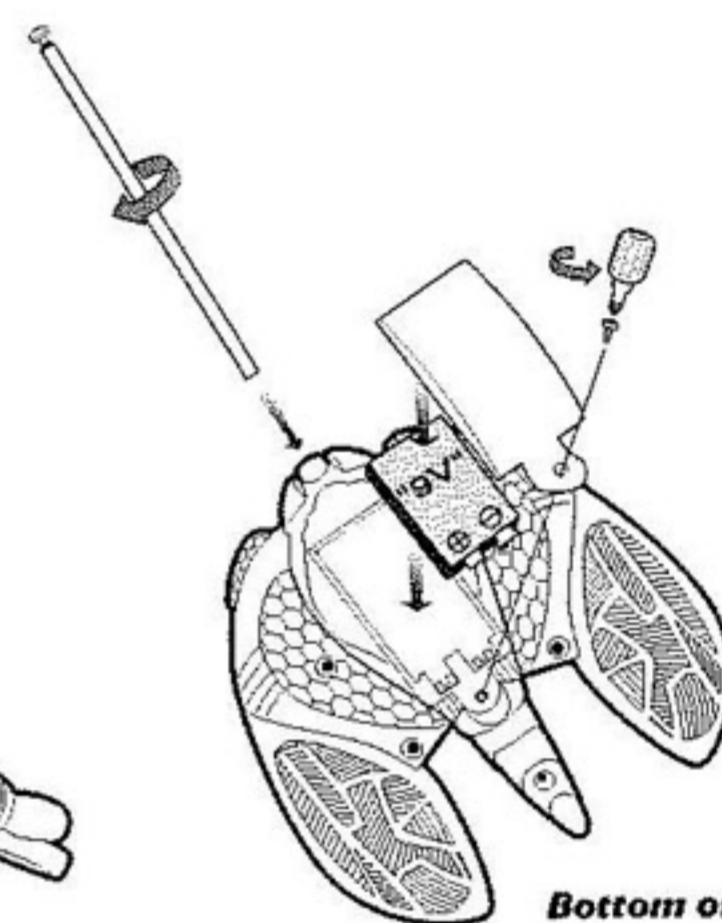
POWER ON / OFF SWITCH



Bottom of Hornet



Top of Hornet



Bottom of Remote Controller

BATTERY INSTALLATION

- Remove the battery compartment cover using a screwdriver as shown.
- Insert correct battery - as shown in diagram, making sure to match the polarity direction.
- Replace the battery cover.

IMPORTANT NOTICE:

- 1) ALWAYS POINT INFRA-RED TRANSMITTER (ON CONTROLLER) DIRECTLY AT INFRA-RED RECEIVER (ON SHADOW CRAWLER) FOR BEST RECEPTION.
- 2) QUALITY OF CONTROL FUNCTION MAY DETERIORATE WHEN BATTERY POWER IS LOW.
- 3) INFRA-RED CONTROL MAY BE IMPAIRED UNDER FLOURESCENT LIGHTING.

WARNING:

CHANGES OR MODIFICATIONS TO THIS UNIT NOT EXPRESSLY APPROVED BY THE PARTY RESPONSIBLE FOR COMPLIANCE COULD VOID THE USER'S AUTHORITY TO OPERATE THE EQUIPMENT.

DN4061us01

Manufactured and Distributed by:
 © 2002 WowWee
 A subsidiary of Hasbro, Inc.
 The Hasbro logo is a trademark of Hasbro, Inc.
 All rights reserved.
 WowWee (Asia Office)
 Unit 301A-C, 92 Granville Rd.,
 T.S.T. EAST, HONG KONG
 WowWee (North America Office)
 4480 Cote de Liesse, Suite 320,
 T.M.R. Quebec, H4N 2R1, Canada
 Consumer Hotline: (514) 344-1250
<http://www.wowwee.com>
 PRINTED IN CHINA

