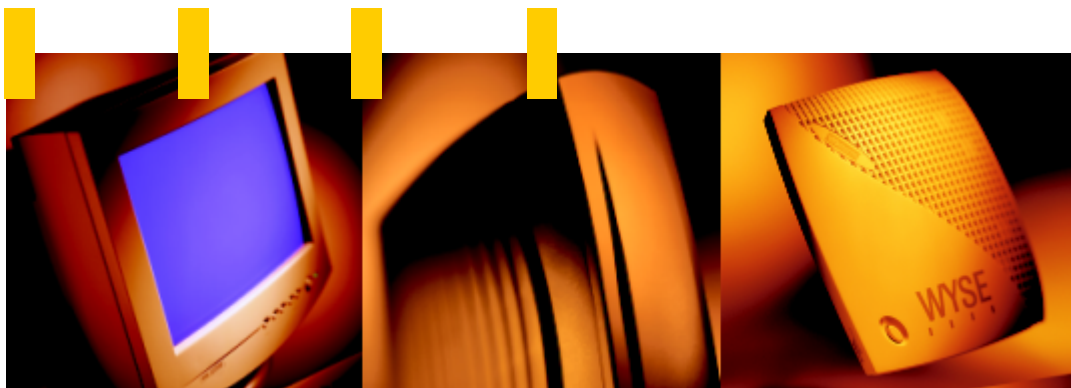



Winterm™ 3000 Series Windows®-based Terminal Users Guide



WYSE
| | |



Winterm 3000 Series Windows®-based Terminal Users Guide

883630-02 Rev. A
May 2000

Wyse Technology Inc.
3471 North First Street
San Jose, CA 95134-1803

Copyright Notice

© 2000 Wyse Technology Inc. All rights reserved.

This manual and the software and firmware described in it are copyrighted. You may not reproduce, transmit, transcribe, store in a retrieval system, or translate into any language or computer language, in any form or by any means, electronic, mechanical, magnetic, optical, chemical, manual or otherwise, any part of this publication without express written permission.

Trademarks

WYSE is a registered trademark and Winterm is a trademark of Wyse Technology Inc.

ICA is a registered trademark and MetaFrame is a trademark of Citrix Systems Inc.

Microsoft, Windows, Windows CE, Windows NT, and Windows Terminal Server are registered trademarks of Microsoft Corporation.

All other products are trademarks and/or registered trademarks of their respective companies.

The Energy Star emblem does not represent endorsement of any product or service.

Specifications subject to change without notice.

Restricted Rights Legend

Use, duplication, or disclosure by the Government is subject to restrictions as set forth in subparagraph (c)(1)(ii) of the Rights in Technical Data and Computer Software clause at DFARS 252.227-7013.

Patents

The Wyse product(s) described herein is(are) covered by U.S. Patent No. 5,918,039 and other patents pending.

Ordering Information

For availability, pricing, and ordering information in the United States and Canada, call 1-800-GET-WYSE (1-800-438-9973). In all other countries, contact your sales representative.

Wyse Technology Inc.
3471 North First Street
San Jose, CA 95134-1803 U.S.A.

EULA for Microsoft® Windows® CE Operating System for Windows-based Terminal Devices

IMPORTANT—READ CAREFULLY

This End User License Agreement (EULA) is a legal agreement between you (either an individual or a single entity) and the manufacturer (MANUFACTURER) of the special purpose computing device (SYSTEM) you acquired which includes certain Microsoft software product(s) installed on the SYSTEM and/or included in the SYSTEM package (SOFTWARE). The SOFTWARE includes computer software, the associated media, any printed materials, and any online or electronic documentation. By installing, copying or otherwise using the SOFTWARE, you agree to be bound by the terms of this EULA. If you do not agree to the terms of this EULA, MANUFACTURER and Microsoft Licensing, Inc. (MS) are unwilling to license the SOFTWARE to you. In such event, you may not use or copy the SOFTWARE, and you should promptly contact MANUFACTURER for instructions on return of the unused product(s) for a refund.

Software License

The SOFTWARE is protected by copyright laws and international copyright treaties, as well as other intellectual property laws and treaties. The SOFTWARE is licensed, not sold.

1. Grant of License

SOFTWARE includes software already installed on the SYSTEM (SYSTEM SOFTWARE) and, if included in the SYSTEM package, software contained on the CD-ROM disk and/or floppy disk(s) labeled "Desktop Software for Microsoft Windows CE" (DESKTOP SOFTWARE). This EULA grants you the following rights to the SOFTWARE:

- **SYSTEM SOFTWARE**

You may use the SYSTEM SOFTWARE only as installed in the SYSTEM.

- **DESKTOP SOFTWARE**

DESKTOP SOFTWARE might not be included with your SYSTEM. If DESKTOP SOFTWARE is included with your SYSTEM, you may install and use the component(s) of the DESKTOP SOFTWARE in accordance with the terms of the end user license agreement provided with such component(s). In the absence of a separate end user license agreement for particular component(s) of the DESKTOP SOFTWARE, you may install and use only one (1) copy of such component(s) on a single computer with which you use the SYSTEM.

- **Use of Windows CE Operating System for Windows-based Terminal Devices with Microsoft Windows NT Server, Terminal Server Edition**

If the SOFTWARE is Windows CE operating system for Windows-based Terminal devices, the following special provisions apply. In order to use the SYSTEM in connection with Windows NT Server, Terminal Server Edition, you must possess (1) a Client Access License for Windows NT Server, Terminal Server Edition and (2) an end user license for Windows NT Workstation or an end user license agreement for Windows NT Workstation for Windows-based Terminal Devices (please refer to the end user license agreement for Windows NT Server, Terminal Server Edition for additional information).

MANUFACTURER may have included a Certificate of Authenticity for Windows NT Workstation for Windows-based Terminal Devices with the SYSTEM. In that case, this EULA constitutes an end user license for the version of Windows NT Workstation for Windows-based Terminal Devices indicated on such Certificate of Authenticity.

- **Back-up Copy**

If MANUFACTURER has not included a back-up copy of the SYSTEM SOFTWARE with the SYSTEM, you may make a single back-up copy of the SYSTEM SOFTWARE. You may use the back-up copy solely for archival purposes.

2. Description of Other Rights and Limitations

- **Speech/Handwriting Recognition**

If the SYSTEM SOFTWARE includes speech and/or handwriting recognition component(s), you should understand that speech and handwriting recognition are inherently statistical processes; that recognition errors are inherent in the processes; that it is your responsibility to provide for handling such errors and to monitor the recognition processes and correct any errors. Neither MANUFACTURER nor its suppliers shall be liable for any damages arising out of errors in the speech and handwriting recognition processes.

- **Limitations on Reverse Engineering, Decompilation and Disassembly**

You may not reverse engineer, decompile, or disassemble the SYSTEM SOFTWARE, except and only to the extent that such activity is expressly permitted by applicable law notwithstanding this limitation.

- **Single SYSTEM**

The SYSTEM SOFTWARE is licensed with the SYSTEM as a single integrated product. The SYSTEM SOFTWARE installed in Read Only Memory (ROM) of the SYSTEM may only be used as part of the SYSTEM.

- **Single EULA**

The package for the SYSTEM SOFTWARE may contain multiple versions of this EULA, such as multiple translations and/or multiple media versions (e.g., in the user documentation and in the software). Even if you receive multiple versions of the EULA, you are licensed to use only one (1) copy of the SYSTEM SOFTWARE.

- **Rental**

You may not rent or lease the SOFTWARE.

- **Software Transfer**

You may permanently transfer all of your rights under this EULA only as part of a sale or transfer of the SYSTEM, provided you retain no copies, you transfer all of the SOFTWARE (including all component parts, the media, any upgrades or backup copies, this EULA and, if applicable, the Certificate(s) of Authenticity), and the recipient agrees to the terms of this EULA. If the SOFTWARE is an upgrade, any transfer must include all prior versions of the SOFTWARE.

- **Termination**

Without prejudice to any other rights, MANUFACTURER or MS may terminate this EULA if you fail to comply with the terms and conditions of this EULA. In such event, you must destroy all copies of the SOFTWARE and all of its component parts.

3. Upgrades

If the SYSTEM SOFTWARE and this EULA are provided separate from the SYSTEM by MANUFACTURER and the SYSTEM SOFTWARE is on a ROM chip, CD ROM disk(s) or floppy disk(s), and labeled "For ROM Upgrade Purposes Only" ("ROM Upgrade"), you may install one copy of the ROM Upgrade onto the SYSTEM as a replacement copy for the SYSTEM SOFTWARE originally installed on the SYSTEM and use it in accordance with Section 1 of this EULA.

4. Copyright

All title and copyrights in and to the SOFTWARE (including but not limited to any images, photographs, animations, video, audio, music, text and "applets," incorporated into the SOFTWARE), the accompanying printed materials, and any copies of the SOFTWARE, are owned by MS or its suppliers (including Microsoft Corporation). You may not copy the printed materials accompanying the SOFTWARE. All rights not specifically granted under this EULA are reserved by MS and its suppliers (including Microsoft Corporation).

5. Product Support

Product support for the SOFTWARE is not provided by MS, its parent corporation, Microsoft Corporation, or their affiliates or subsidiaries. For product support, please refer to MANUFACTURER's support number provided in the documentation for the SYSTEM. Should you have any questions concerning this EULA, or if you desire to contact MANUFACTURER for any other reason, please refer to the address provided in the documentation for the SYSTEM.

6. Export Restrictions

You agree that you will not export or re-export the SOFTWARE to any country, person, or entity subject to U.S. export restrictions. You specifically agree not to export or re-export the SOFTWARE: (i) to any country to which the U.S. has embargoed or restricted the export of goods or services, which as of March 1998 include, but are not necessarily limited to Cuba, Iran, Iraq, Libya, North Korea, Sudan and Syria, or to any national of any such country, wherever located, who intends to transmit or transport the products back to such country; (ii) to any person or entity who you know or have reason to know will utilize the SOFTWARE or portion thereof in the design, development or production of nuclear, chemical or biological weapons; or (iii) to any person or entity who has been prohibited from participating in U.S. export transactions by any federal agency of the U.S. government.

If the SOFTWARE is labeled "North America Only Version" above, on the Product Identification Card, or on the SOFTWARE packaging or other written materials, then the following applies: The SOFTWARE is intended for distribution only in the United States, its territories and possessions (including Puerto Rico, Guam, and U.S. Virgin Islands) and Canada. Export of the SOFTWARE from the United States is regulated under "EI controls" of the Export Administration Regulations (EAR, 15 CFR 730-744) of the U.S. Commerce Department, Bureau of Export Administration (BXA). A license is required to export the SOFTWARE outside the United States or Canada. You agree that you will not directly or indirectly, export or re-export the SOFTWARE (or portions thereof) to any country, other than Canada, or to any person or entity subject to U.S. export restrictions without first obtaining a Commerce Department export license. You warrant and represent that neither the BXA nor any other U.S. federal agency has suspended, revoked or denied your export privileges.

7. Note on Java Support

The SYSTEM SOFTWARE may contain support for programs written in Java. Java technology is not fault tolerant and is not designed, manufactured, or intended for use or resale as on-line control equipment in hazardous environments requiring fail-safe performance, such as in the operation of nuclear facilities, aircraft navigation or communication systems, air traffic control, direct life support machines, or weapons systems, in which the failure of Java technology could lead directly to death, personal injury, or severe physical or environmental damage.

8. Limited Warranty

- **Limited Warranty**

MANUFACTURER warrants that the SOFTWARE will perform substantially in accordance with the accompanying written materials for a period of ninety (90) days from the date of receipt. Any implied warranties on the SOFTWARE are limited to ninety (90) days. Some states/jurisdictions do not allow limitations on duration of an implied warranty, so the above limitation may not apply to you.

- **Customer Remedies**

MANUFACTURER'S and its suppliers' entire liability and your exclusive remedy shall be, at MANUFACTURER'S option, either (a) return of the price paid, or (b) repair or replacement of the SOFTWARE that does not meet the above Limited Warranty and which is returned to MANUFACTURER with a copy of your receipt. This Limited Warranty is void if failure of the SOFTWARE has resulted from accident, abuse, or misapplication. Any replacement SOFTWARE will be warranted for the remainder of the original warranty period or thirty (30) days, whichever is longer.

- **No Other Warranties**

EXCEPT AS EXPRESSLY PROVIDED IN THE LIMITED WARRANTY SECTION ABOVE, THE SOFTWARE IS PROVIDED TO THE END USER "AS IS" WITHOUT WARRANTY OF ANY KIND, EITHER EXPRESSED OR IMPLIED, INCLUDING, BUT NOT LIMITED TO, WARRANTIES OF NON-INFRINGEMENT, MERCHANTABILITY, AND/OR FITNESS FOR A PARTICULAR PURPOSE. THE ENTIRE RISK OF THE QUALITY AND PERFORMANCE OF THE SOFTWARE IS WITH YOU.

- **No Liability for Consequential Damages**

MANUFACTURER OR MANUFACTURER'S SUPPLIERS, INCLUDING MS AND ITS SUPPLIERS, SHALL NOT BE HELD TO ANY LIABILITY FOR ANY DAMAGES SUFFERED OR INCURRED BY THE END USER (INCLUDING, BUT NOT LIMITED TO, GENERAL, SPECIAL, CONSEQUENTIAL OR INCIDENTAL DAMAGES INCLUDING DAMAGES FOR LOSS OF BUSINESS PROFITS, BUSINESS INTERRUPTION, LOSS OF BUSINESS INFORMATION AND THE LIKE), ARISING FROM OR IN CONNECTION WITH THE DELIVERY, USE OR PERFORMANCE OF THE SOFTWARE.

If you acquired this EULA in the United States, this EULA is governed by the laws of the State of Washington.

If you acquired this EULA in Canada, this EULA is governed by the laws of the Province of Ontario, Canada. Each of the parties hereto irrevocably attorns to the jurisdiction of the courts of the Province of Ontario and further agrees to commence any litigation which may arise hereunder in the courts located in the Judicial District of York, Province of Ontario.

If this EULA was acquired outside the United States, then local law may apply.

Should you have any questions concerning this EULA, please contact the MANUFACTURER of your SYSTEM.

U.S. GOVERNMENT RESTRICTED RIGHTS

The SOFTWARE and documentation are provided with RESTRICTED RIGHTS. Use, duplication, or disclosure by the Government is subject to restrictions as set forth in subparagraph (c)(1)(ii) of the Rights in Technical Data and Computer Software clause at DFARS 252.227-7013 or subparagraphs (c)(1) and (2) of the Commercial Computer Software—Restricted Rights at 48 CFR 52.227-19, as applicable. MANUFACTURER is Microsoft Corporation/One Microsoft Way/Redmond, WA 98052-6399.

FCC Statement

This equipment has been tested and found to comply with the limits for either Class A or Class B digital devices (refer to “Terminal Requirements Compliance”), pursuant to Part 15 of the FCC Rules. These limits are designed to provide reasonable protection against harmful interference in a residential installation. This equipment generates, uses, and can radiate radio frequency energy and, if not installed and used in accordance with the instructions, may cause harmful interference to radio communications. However, there is no guarantee that interference will not occur in a particular installation. If this equipment does cause harmful interference to radio or television reception, which can be determined by turning the equipment off and on, the user is encouraged to try to correct the interference by one or more of the following measures:

- Reorient or relocate the receiving antenna.
- Increase the separation between the equipment and the receiver.
- Connect the equipment into an outlet on a circuit different from that to which the receiver is connected.
- Consult the dealer or an experienced radio/TV technician for help.



Caution

Changes or modifications not covered in this manual must be approved in writing by the manufacturer's Regulatory Engineering department. Changes or modifications made without written approval may void the user's authority to operate the equipment.

Terminal Requirements Compliance

FCC Compliance

Models 3200LE, 3320SE, 3350SE, 3360SE, and 3720SE terminals meet Class B requirements.

IEC/EN Compliance

Models 3320SE, 3350SE, 3360SE, and 3720SE terminals meet Class B requirements.

Model 3200LE terminal meets Class B requirements.

Canadian DOC Notices

Refer to the previous section, “Terminal Requirements Compliance,” to find out what model terminal each of the statements below refers to.

Class A

This digital apparatus does not exceed the Class A limits for radio noise emissions from digital apparatus set out in the Radio Interference Regulations of the Canadian Department of Communications.

Le présent appareil numérique n’émet pas de bruits radioélectriques dépassant les limites applicables aux appareils numériques de la classe A prescrites dans le Règlement sur le brouillage radioélectrique édicté par le Ministère des Communications du Canada.

Class B

This digital apparatus does not exceed the Class B limits for radio noise emissions from digital apparatus set out in the Radio Interference Regulations of the Canadian Department of Communications.

Le présent appareil numérique n’émet pas de bruits radioélectriques dépassant les limites applicables aux appareils numériques de la classe B prescrites dans le Règlement sur le brouillage radioélectrique édicté par le Ministère des Communications du Canada.

IEC/EN Notice

This product conforms to the requirements of IEC950 and EN60950.

This product conforms to requirements of EN55022 for Class A equipment or EN55022 for Class B equipment (refer to “Terminal Requirements Compliance”).

Cable Notice

The use of shielded I/O cables is required when connecting this equipment to any and all optional peripheral or host devices. Failure to do so may cause interference and violate FCC and international regulations for electromagnetic interference.

License Agreement

YOU SHOULD CAREFULLY READ THE FOLLOWING TERMS AND CONDITIONS BEFORE USING THIS SOFTWARE (TOGETHER WITH ANY SUPPLIED DOCUMENTATION, HEREAFTER "SOFTWARE"), WHICH IS OWNED BY WYSE TECHNOLOGY INC. OR ITS LICENSORS. USING THIS SOFTWARE INDICATES YOUR ACCEPTANCE OF THE FOLLOWING TERMS AND CONDITIONS. WYSE LICENSORS ARE INTENDED THIRD PARTY BENEFICIARIES UNDER THIS AGREEMENT.

Grant

You may use the Software in or in conjunction with Your Wyse manufactured hardware (Terminal). You have the right to use this Software by loading it onto a computer containing the capability of transferring the Software (in whole or in part) to the Wyse manufactured hardware. You may use the Software in this fashion as many times as necessary, so long as such use is always in conjunction with the Wyse Terminal. You may transfer ownership of the Terminal and equipment, including the right to use the Software to another party so long as that party agrees to accept these terms and conditions.

YOU MAY NOT USE, COPY, MODIFY, TRANSLATE OR TRANSFER THE SOFTWARE, OR MODIFICATION THEREOF, IN WHOLE OR IN PART, EXCEPT AS EXPRESSLY PROVIDED FOR IN THIS LICENSE. YOU MAY NOT DECOMPILE, REVERSE ENGINEER OR OTHERWISE DECODE OR ALTER THE SOFTWARE.

Disclaimer of Warranty

This Software is provided, "AS IS", and is delivered with no warranties, either express or implied.

WYSE MAKES AND YOU RECEIVE NO WARRANTIES ON THE FIRMWARE, EXPRESS, IMPLIED, OR STATUTORY, OR IN ANY OTHER PROVISION OF THIS AGREEMENT OR COMMUNICATION WITH YOU, AND WYSE DISCLAIMS ANY IMPLIED WARRANTIES OF MERCHANTABILITY, NON-INFRINGEMENT AND FITNESS FOR ANY PARTICULAR PURPOSE. WYSE DOES NOT WARRANT THAT THE FUNCTIONS CONTAINED IN THE PRODUCT WILL MEET YOUR REQUIREMENTS OR THAT THE OPERATION WILL BE UNINTERRUPTED OR ERROR FREE.

SOME STATES DO NOT ALLOW LIMITATIONS ON HOW LONG AN IMPLIED WARRANTY LASTS SO THE ABOVE LIMITATION MAY NOT APPLY TO YOU. THIS WARRANTY GIVES YOU SPECIFIC LEGAL RIGHTS. YOU MAY ALSO HAVE OTHER RIGHTS WHICH VARY FROM STATE TO STATE.

Limit of Liability

UNDER NO CIRCUMSTANCES SHALL WYSE BE LIABLE FOR LOSS OF DATA, COST OF COVER, OR ANY INCIDENTAL OR CONSEQUENTIAL DAMAGES, HOWEVER CAUSED AND ON ANY THEORY OF LIABILITY. THESE LIMITATIONS SHALL APPLY EVEN IF WYSE OR ITS RESELLER HAS BEEN ADVISED OF THE POSSIBILITY OF SUCH DAMAGES, AND NOTWITHSTANDING ANY FAILURE OF ESSENTIAL PURPOSE OF ANY LIMITED REMEDY PROVIDED HEREIN.

YOU AGREE THAT THESE ARE THE ONLY APPLICABLE TERMS OF AGREEMENT BETWEEN US COVERING SOFTWARE AND THAT THEY SUPERSEDE ANY OTHER COMMUNICATIONS (ORAL OR WRITTEN) BETWEEN US RELATING TO THE SOFTWARE.

Export Restrictions

You agree You will not export or transmit the Software to any country to which export is restricted by applicable US law or regulation without the written approval of the appropriate US Government organization.

U.S. Government Restricted Rights

The Software is provided with RESTRICTED RIGHTS. Use, duplication or disclosure by the Government is subject to restrictions as set forth in subparagraph (c)(1)(ii) of the Rights in Technological Data and computer software clause at DFARS 252.227-7013 or in subparagraphs (c)(1) and (2) of the Commercial Computer Software-Restricted Rights at 8 C.F.R. 52-227-19 as applicable. Contractor/Licenser is WYSE Technology Inc.



Contents

About the Users Guide

Guide Overview	xvii
Guide Conventions	xviii
Text Format	xviii
User Interface Menu Control	xix

1 Introducing the 3000 Series Windows-based Terminals

Models Summary	1
3200LE Terminal	2
3320SE Terminal	3
3350SE Terminal	4
3360SE Terminal	5
3720SE Terminal	6
3000 Series WBT Terminal Features	7

2 General Terminal Information

Version and Copyright Information	11
Network Information	12

3 Display Configuration

Display Screen Resolution	15
Energy Savers	18

4 Keyboard and Mouse Configuration

Keyboard	23
Mouse	25

5 Managing Connections

- Configuring a Connection 27
- Making a Connection 27
- Ending a Connection 28
- Shutting Down the Terminal 29

6 Multiple Sessions

- Setting Up Multiple Sessions 31
- Managing Multiple Sessions 31
- Manipulating Multiple Sessions 32

7 Getting Help

- Troubleshooting Your Terminal 33

Index

List of Figures

- 1-1 3200LE Terminal 2
- 1-2 3320SE Terminal 3
- 1-3 3350SE Terminal 4
- 1-4 3360SE Terminal 5
- 1-5 3720SE Terminal 6
- 2-1 Winterm Connection Manager 10
- 2-2 General Properties Sheet 11
- 2-3 SysInfo Properties Sheet 13
- 3-1 Display Properties Sheet 16
- 4-1 Input Properties Sheet 22
- 5-1 Shutdown Window Dialog Box 29

List of Tables

- 1 Text Format xviii
- 2 User Interface Menu Control xix
- 1-1 Terminal Features 7
- 3-1 Display Screen Resolution 17
- 3-2 Energy Savers 19
- 4-1 Keyboard 23
- 4-2 Mouse 25
- 5-1 Connections Properties Sheet 28
- 5-2 Shutdown Window Dialog Box 29
- 7-1 Troubleshooting the Terminal 33



About the Users Guide

The *Winterm 3000 Series Windows-based Terminal Users Guide* contains the information you will need to use and troubleshoot a WBT (Windows-based Terminal). This guide is written for users and covers the Models 3200LE, 3320SE, 3350SE, 3360SE, and 3720SE terminals.

Guide Overview

The users guide consists of the following chapters:

- Introducing the 3000 Series Windows-based Terminals
- General Terminal Information
- Display Configuration
- Keyboard and Mouse Configuration
- Managing Connections
- Multiple Sessions
- Getting Help

This guide contains information about:

- WBT features and management
- The user interface
- Getting help



Note



The Adobe Acrobat version of this guide features a link to the Wyse home page at www.wyse.com.

Guide Conventions

Text Format

Table 1 lists the text format conventions used in this document.

Table 1 Text Format

Convention	Where Used
<i>Italic</i>	New term, book title or emphasis.
Bold	Screen display, keycaps, and user input.
 Note	Indicates a note. A note adds information.
 Caution	Indicates a caution. A caution indicates actions that may cause damage to equipment, erase files, or destroy data.
+	Keystroke sequences such as: Ctrl+Alt+Del
	Instructions about invoking a menu such as: Network SNMP Network Location

User Interface Menu Control

Table 2 describes the command buttons used for user interface menu control on a 3000 series WBT.

Table 2 User Interface Menu Control

Command Button	Function
X	Found in the upper right corner of a dialog box. Click on this command button to quit a dialog box or properties sheet without saving changes.
OK	Found in dialog boxes and on properties sheets. Click on this command button to save your changes and quit a dialog box or properties sheet.
Cancel	Found in dialog boxes and on properties sheets. Click on this command button at any time to quit a dialog box or properties sheet without saving changes.
Apply	Found in dialog boxes and on properties sheets. Click on this command button to save changes without quitting a dialog box or properties sheet. This command button is sometimes not activated.
Next or Accept	Found in wizards. Click on these command buttons to display the next dialog box in the sequence.
Back	Found in wizards. Click on this command button to return to the previous dialog box.
Finish	Found in wizards. Click on this command button to finish the wizard.

xx

1

Introducing the 3000 Series Windows-based Terminals

Winterm 3000 series WBTs (Windows-based Terminals) are terminals that display windows rather than the classic text-based display. They are designed to connect to Windows 2000 servers via RDP (Remote Desktop Protocol), to Windows NT servers via ICA (Independent Computing Architecture), or to legacy servers using various terminal emulations such as TN3270 or TN5250.

RDP is the Windows CE-based presentation service protocol for connecting to Windows terminal servers. ICA is the presentation service protocol for Windows NT servers. Both allow an application's user interface to execute on a Windows-based terminal while the application's logic executes on the server.

Models Summary

There are five models of Winterm 3000 series terminals:

- Modular type, Models 3200LE, 3320SE, 3350SE, and 3360SE
- Integrated-CRT type, Model 3720SE



Note

Monitors are not provided with Models 3200LE, 3320SE, 3350SE, and 3360SE terminals. Your system administrator must provide a monitor and video interface cable for these terminals.

3200LE Terminal

The Model 3200LE terminal is the entry-level modular-type 3000 Series terminal. The connections for peripherals such as the monitor, keyboard, and mouse are on the back of the terminal. The following figure shows a Model 3200LE modular terminal.

Figure 1-1 3200LE Terminal



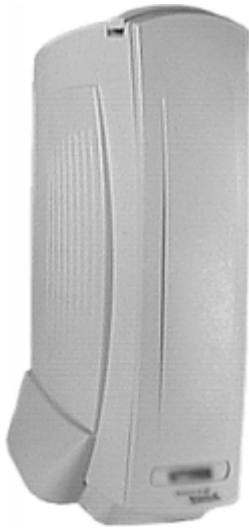
The following items are provided with Model 3200LE terminals:

- Power supply
- Power cord
- Keyboard (with domestic versions only)
- Mouse
- Installation and user information

3320SE Terminal

The Model 3320SE terminal is a standard modular-type 3000 series terminal. The connections for peripherals such as the monitor, keyboard, and mouse are on the back of the terminal. The following figure shows a standard modular terminal.

Figure 1-2 3320SE Terminal



The following items are provided with Model 3320SE terminals:

- Power supply and power cord
- Desktop mounting stand
- Cable shroud and cable clip
- Keyboard (with domestic versions only) and mouse
- Installation and user information



Note

An optional wall-mount bracket is also available. For more information call 1-800-800-WYSE (9973).

3350SE Terminal

The Model 3350SE terminal is a standard modular-type 3000 series terminal. The connections for peripherals such as the monitor, keyboard, and mouse are on the back of the terminal. The following figure shows a Model 3350SE terminal.

Figure 1-3 3350SE Terminal



The following items are provided with Model 3350SE terminals:

- Power supply and power cord
- Cable shroud and cable clip
- Keyboard (with domestic versions only) and mouse
- Installation and user information



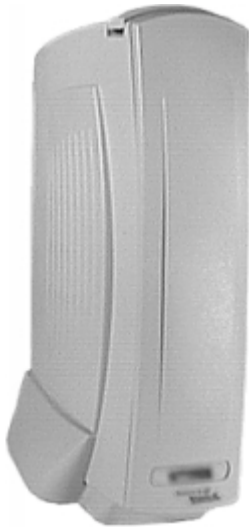
Note

An optional wall-mount bracket is also available. For more information call 1-800-800-WYSE (9973).

3360SE Terminal

The Model 3360SE terminal is a standard modular-type 3000 Series terminal. The connections for peripherals such as the monitor, keyboard, and mouse are on the back of the terminal. The following figure shows a Model 3360SE modular terminal.

Figure 1-4 3360SE Terminal



The following items are provided with Model 3360SE terminals:

- Power supply and power cord
- Desktop mounting stand
- Cable shroud and cable clip
- Keyboard (with domestic versions only) and mouse
- Installation and user information



Note

An optional wall-mount bracket is also available. For more information call 1-800-800-WYSE (9973).

3720SE Terminal

Model 3720SE, the terminal described below, is the standard Integrated-CRT 3000 series terminal. The connections for peripherals such as keyboard and mouse are on the back of the terminal. The following figure shows an integrated-CRT terminal.

Figure 1-5 3720SE Terminal



The following items are provided with Model 3720SE terminals:

- Power cord
- Keyboard (with domestic versions only) and mouse
- Installation and user information

3000 Series WBT Terminal Features

Each model WBT comes with its own set of features. The following table outlines these features.

Table 1-1 Terminal Features

Feature	3200LE	3320SE	3350SE	3360SE	3720SE
Windows 3.1, Windows 95, Windows 98, and Windows NT applications via Windows 2000	✓	✓	✓	✓	✓
RDP and ICA 3.x application compliant	✓	✓	✓	✓	✓
ICA server connections via serial cable		✓	✓	✓	✓
10Base-T network communications	✓	✓	✓	✓	✓
100Base-T network communications	✓	✓	✓	✓	✓
Dual high-speed serial ports		✓	✓	✓	✓
Parallel printer port		✓	✓	✓	✓
Single USB port				✓	
Dual USB ports	✓		✓		
Optional touch screen support	✓	✓	✓	✓	
Support for monochrome or color monitor	✓	✓	✓	✓	
Desktop (standard) or wall-mounted (optional) housing	✓	✓	✓	✓	
Support for PCMCIA modem	✓	✓	✓	✓	✓

2

General Terminal Information

When you turn on your WBT the **Winterm Connection Manager** displays (see Figure 2-1). From the connection manager press **F2** to display the **Terminal Properties** dialog box. Two of the 10 properties sheets in this dialog box provide general information about your WBT. They are the **General** properties sheet and the **SysInfo** properties sheet. The following paragraphs discuss these properties sheets.



Note

If you turn on your WBT and the **Setup Wizard** displays, contact your system administrator. If you are a system administrator, see the administrators guide.



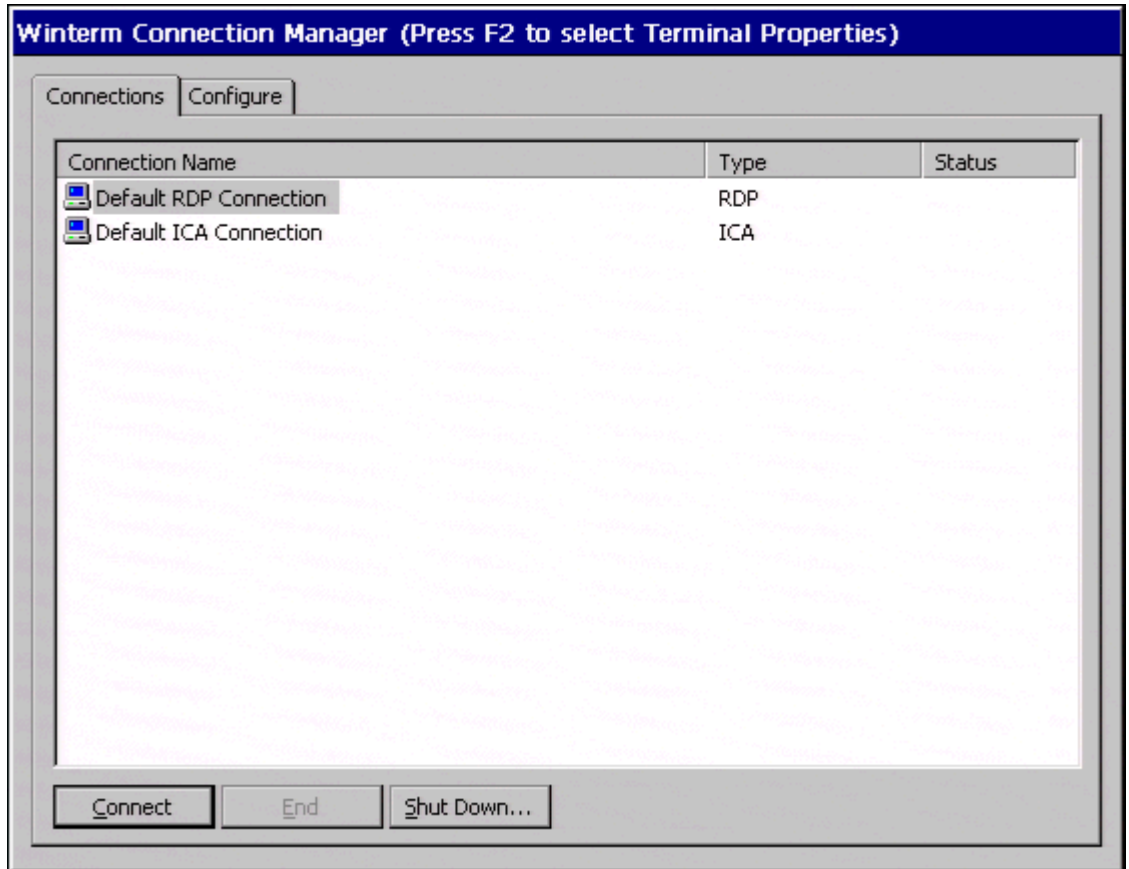
Note

See “Managing Conections” in this guide for more information about the **Winterm Connection Manager**.



Note

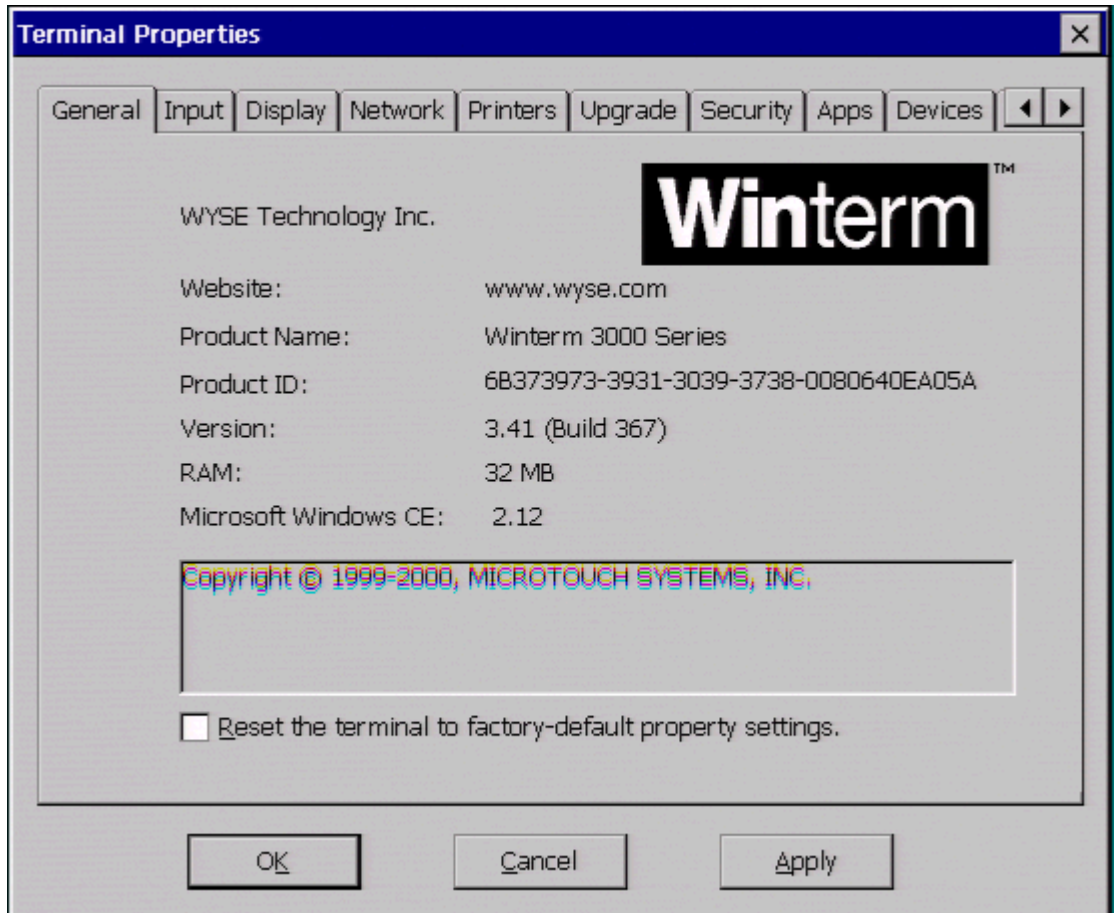
For more information about the **Terminal Properties** dialog box, see your system administrator. If you are a system administrator, see the *Winterm 3000 Series Windows-based Terminal Administrators Guide*.

Figure 2-1 Winterm Connection Manager

Version and Copyright Information

The **General** properties sheet includes information about the current software on your terminal and copyright statements. See Figure 2-2. The **General** properties sheet is the default for the dialog box.

Figure 2-2 General Properties Sheet



Read the information on this sheet. Click on **Close** to return to the **Winterm Connection Manager**. By default **Cancel** and **Apply** are deactivated.

**Note**

The amount of available RAM shown on this properties sheet depends on the model of terminal in use.

**Caution**

There is one function on the **General** properties sheet, **Reset the Terminal to Factory Default Property Settings**. Contact your system administrator before using this function.

Network Information

The **SysInfo** properties sheet contains network information. See Figure 2-3.

Click on the **SysInfo** tab to invoke this properties sheet. Read the information on this sheet. Click on **Close** to return to the **Winterm Connection Manager**.

Figure 2-3 SysInfo Properties Sheet

The image shows a screenshot of a 'Terminal Properties' dialog box with the 'SysInfo' tab selected. The dialog has a title bar with a close button. Below the title bar is a row of tabs: Input, Display, Network, Printers, Upgrade, Security, Apps, Devices, and SysInfo. The SysInfo tab is active and contains four sections: Network Card, Hardware Number, TCP/IP Settings, and DHCP Settings. Each section is enclosed in a box. The Network Card section shows the MAC Address as 00:80:64:0E:A0:5A. The Hardware Number section shows the Serial Number as s97k19907875 and the Revision as N/A. The TCP/IP Settings section shows IP Address, Subnet Mask, and Gateway as 0.0.0.0, DNS as Disable, Default Domain as N/A, DNS Servers as N/A, WINS as Disable, and WINS Servers as N/A. The DHCP Settings section shows DHCP as Disable, Lease as N/A, and Elapsed as N/A. At the bottom of the dialog are three buttons: Close, Cancel, and Apply.

Terminal Properties	
Input Display Network Printers Upgrade Security Apps Devices SysInfo	
Network Card	
MAC Address:	00:80:64:0E:A0:5A
Hardware Number	
Serial Number:	s97k19907875
Revision:	N/A
TCP/IP Settings	
IP Address:	0.0.0.0
Subnet Mask:	0.0.0.0
Gateway:	0.0.0.0
DNS:	Disable
Default Domain:	N/A
DNS Servers:	N/A
WINS:	Disable
WINS Servers:	N/A
DHCP Settings	
DHCP:	Disable
Lease:	N/A
Elapsed:	N/A
Close Cancel Apply	



3

Display Configuration

From the **Winterm Connection Manager** (Figure 2-1) press **F2** on your keyboard. The **Terminal Properties** dialog box displays (see Figure 3-1). The **Display** properties sheet available in this dialog box allows you to configure display screen resolution and turn on the energy savers functions.

To invoke this properties sheet click on the **Display** tab in the **Terminal Properties** dialog box.

Display Screen Resolution

This paragraph discusses display screen resolution referring to Figure 3-1 and using Table 3-1.

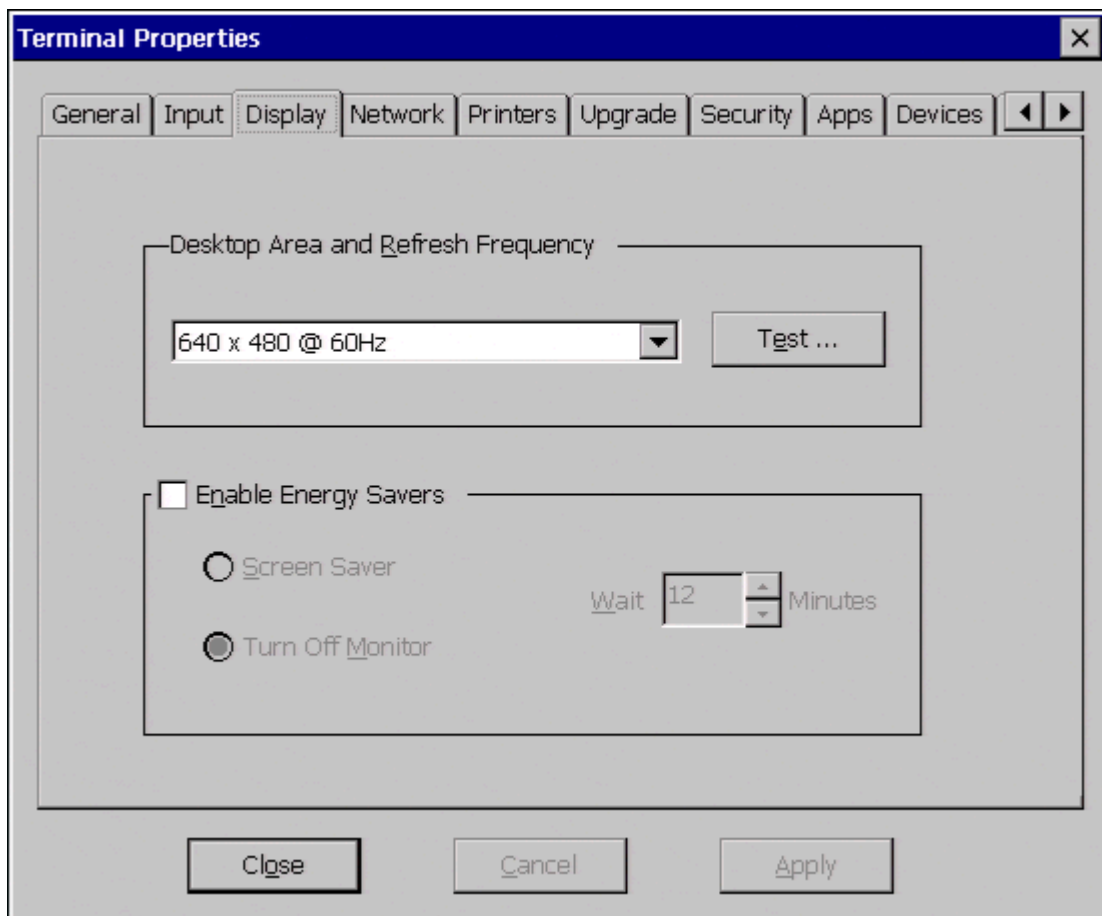
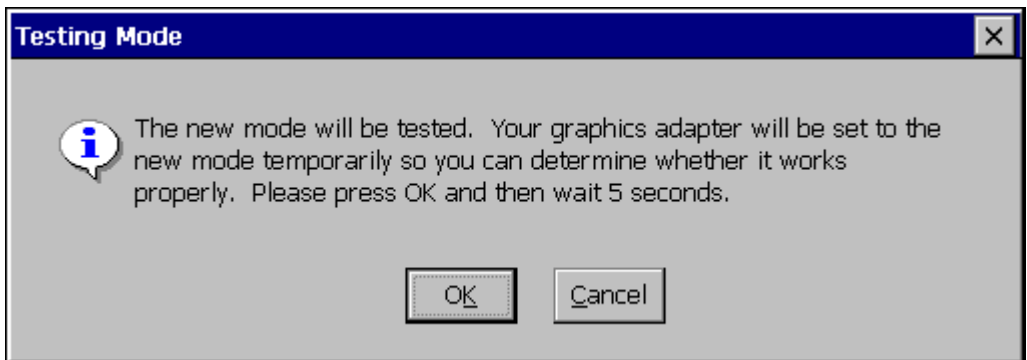
Figure 3-1 Display Properties Sheet

Table 3-1 Display Screen Resolution



Display Properties Sheet Area Called...	To Use...
Desktop Area and Refresh Frequency	The scrolling list box displays the current terminal display screen resolution. Scroll and click on a selection to change the resolution. The default is 640 x 480 @ 60 Hz . Test Click on this command button to test the setting selected in the above scrolling list box. The following dialog box displays:



Follow the instructions in the dialog box. If you click on **OK** a test pattern will display. If you click on **Cancel**, the test is cancelled.

Table 3-1

Display Screen Resolution, Continued

Display Properties Sheet Area Called...	To Use...
	After five seconds the following dialog box displays: <div></div>
	Follow the instructions in the dialog box. If you click on Yes , you will return to the Display properties sheet.
	If you click on No , the following dialog box will display: <div></div>
	Follow the instructions in the dialog box.

Energy Savers

This paragraph discusses energy saving features, referring to Figure 3-1 and using Table 3-2.

Table 3-2 Energy Savers

Display Properties Sheet Area Called...	To Use...
Enable Energy Savers	<p>Click on this check box to activate the energy saver functions. When you check this box, all three functions in the group box are activated:</p> <p>Screen Saver Click on this radio button to enable the screen saver. By default this function is not activated.</p> <p>Turn Off Monitor Click on this radio button to use this function as an energy saver. The function works by shutting off the terminal's display rather than displaying a screen saver. By default this function is not activated. When Enable Energy Savers is activated, this function is enabled.</p> <p>Wait Adjust the amount of time (in minutes) that elapses before the energy saver function you have selected starts. You can enter a number or use the scrolling list. By default the function is not activated. When it is activated, the default is 12.</p>

To finish, click on **Apply** then **Close**. The following dialog box displays:

Figure 3-2 Terminal Settings Change Dialog Box



You can also click on **Cancel** to cancel any changes and return to the **Winterm Connection Manager**.

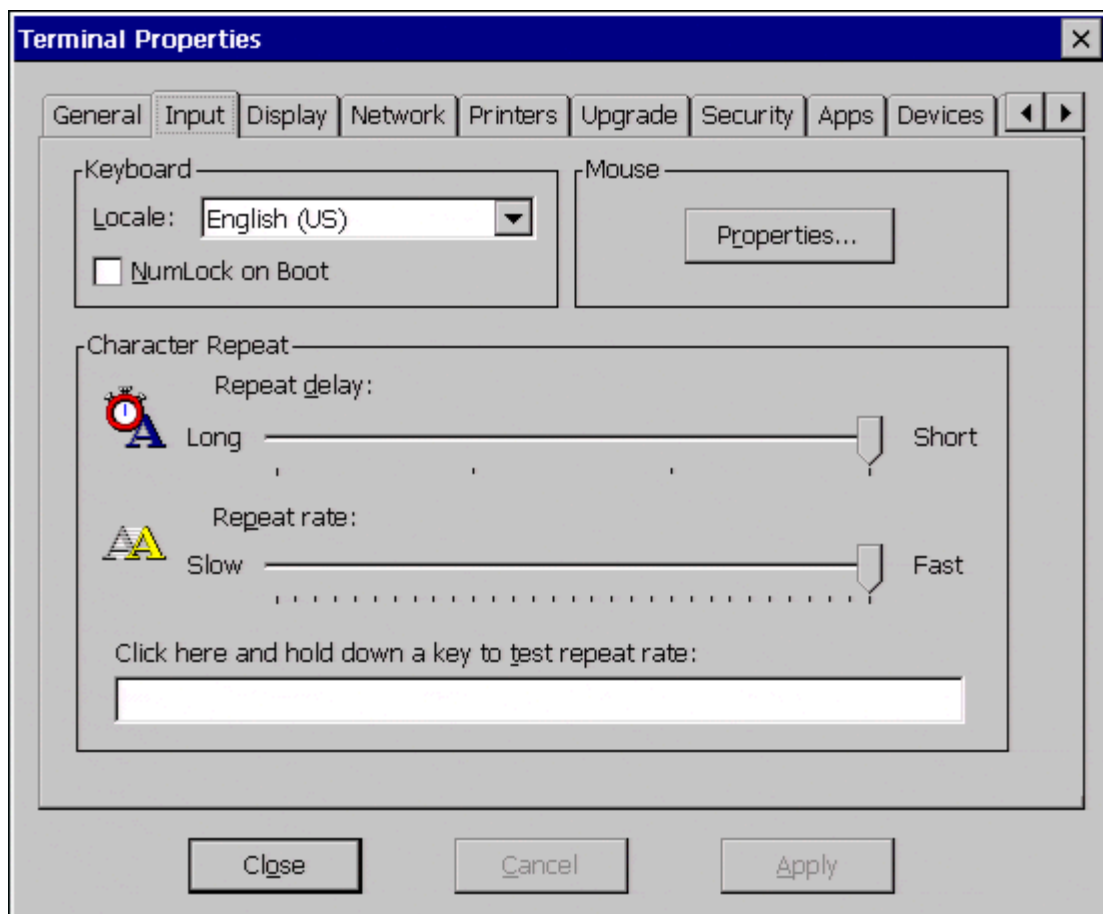


4

Keyboard and Mouse Configuration

From the **Winterm Connection Manager** you can configure your terminal's keyboard and mouse. Press **F2** on your keyboard. The **Terminal Properties** dialog box displays. In this dialog box is a properties sheet you can use for setting up your keyboard and mouse. It is the **Input** properties sheet. Figure 4-1 shows this properties sheet.

To invoke this properties sheet click on the **Input** tab.

Figure 4-1 Input Properties Sheet


Keyboard

This paragraph discusses configuring your keyboard, referring to Figure 4-1 and using Table 4-1.

Table 4-1 Keyboard

Input Properties Sheet Area Called...	To Use...
Keyboard	<p data-bbox="447 456 999 482">Use this group box to configure your keyboard:</p> <p data-bbox="447 510 533 536">Locale</p> <p data-bbox="447 541 1107 567">Use this scroll list to select a language for the keyboard:</p> <div data-bbox="447 595 1116 1102"><ul style="list-style-type: none">• Belgian Dutch• Belgian French• Brazilian (ABNT)• Canadian Eng (Multi)• Canadian FR (Multi)• Canadian French• Danish• Dutch• English (UK)• English (US)• Finnish• French• German• Italian• Italian (142)• Japanese• Latin American• Norwegian• Portuguese• Spanish• Spanish Variation• Swedish• Swiss French• Swiss German• US International</div> <p data-bbox="447 1130 1184 1159">Click on a selection to highlight it. The default is English (US).</p>

Table 4-1 Keyboard, Continued

Input Properties Sheet	
Area Called...	To Use...
	<div><div></div><div>Note An IEPC keyboard is required for any language other than English (US). The keyboard layouts are different for each of the languages listed above.</div></div>
	<div><div>NumLock On Boot</div><div>Click on this check box to enable the Num Lock function on your keyboard. When checked, the keyboard will boot up with the Num Lock function enabled.</div></div>
Character Repeat	<div><div>The group box used to set the keyboard character repeat parameters:</div><div><div>Repeat Delay</div><div>Use this slider control to adjust the repeat delay of keyboard characters. Repeat Delay determines how quickly the same character will appear on screen when typed more than once.</div></div><div><div>Repeat Rate</div><div>Use this slider control to adjust the repeat rate of a keyboard character. Repeat Rate determines how quickly the same character will appear on screen when the associated key is held down.</div></div></div>

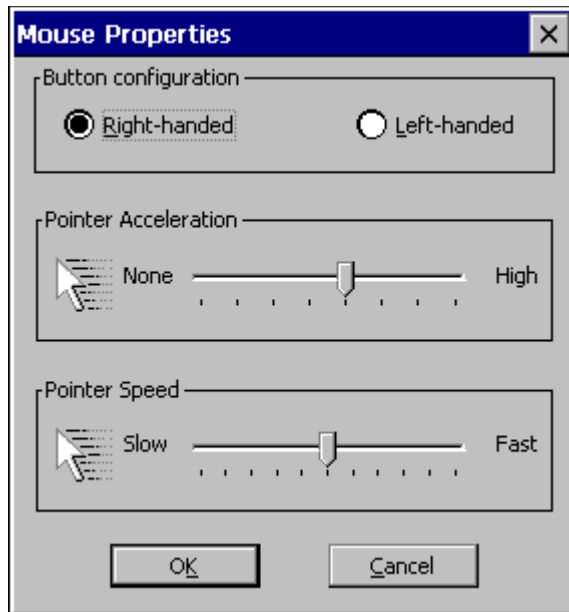
To finish, click on **Apply** then **Close** to apply the changes you made and return to the **Winterm Connection Manager**.

Mouse

This section discusses configuring your mouse referring to Figure 4-1 and using Table 4-2.

Table 4-2 Mouse

Input Properties Sheet Area Called...	To Use...
Mouse	Use the following dialog box to configure mouse attributes. Properties... Click on this command button to invoke the Mouse Properties dialog box. Use it to set your mouse properties.



Button Configuration

Select from:

- **Right-handed**
- **Left-handed**

to choose which button you will use on your mouse. The default is **Right-handed**.

Table 4-2 Mouse, Continued

Input Properties Sheet Area Called...	To Use...
	Pointer Acceleration Use this slider control to adjust the acceleration of the mouse.
	Pointer Speed Use this slider control to adjust the speed of the mouse.

To finish, click on **Apply** then **Close** to apply the changes and return to the **Winterm Connection Manager**.

5

Managing Connections

The **Winterm Connection Manager** is designed to help you manage your network connections. The manager consists of the **Connections** properties sheet and the **Configure** properties sheet. With it you can configure, make, and end connections, and gracefully shut down the terminal. Figure 2-1 shows the **Winterm Connection Manager**.

The **Winterm Connection Manager** is automatically invoked when the terminal is turned on.



Note

If you turn on your WBT and the **Setup Wizard** displays, contact your system administrator. If you are a system administrator, see the administrators guide.

Configuring a Connection

The functions of the **Configure** properties sheet are used to add, modify and delete connections. See your system administrator or the administrators guide for more information about configuring connections.

Making a Connection


The functions of the **Connections** properties sheet (see Figure 2-1) are used to:

- Make terminal connections
- Display the status of a connection
- End a connection
- Shut down the terminal gracefully

 **Note**
The **Connections** properties sheet is the default sheet displayed by the **Winterm Connection Manager**.

Table 5-1 identifies and describes each of functions of the properties sheet.

Table 5-1 Connections Properties Sheet

Function	Description
Connection Name	This application window lists the connections that you can use. Default RDP Connection and Default ICA Connection are the default connections for the window. <div> Note See the administrators guide for information about creating connections.</div>
Type	This list shows the type of connection. The defaults are RDP and ICA .
Status	This list shows the status of the connection. If a connection is live, the status for that connection will be Active . If a connection is not live, the list will show a blank.
Connect	Click on the Connect command button to make the highlighted connection. Click on a connection in the Connection Name list box to highlight it. You can also double-click on a selection to make a connection.
End	See Ending a Connection.
Shutdown	See Shutting Down the Terminal.

Ending a Connection

Click on the **End** command button to end the connection process. When you press the **End** button and the connection is active, the **End Task** dialog displays. The **End** command button is enabled when one or more sessions become active.

Shutting Down the Terminal


Use the **Shutdown Window** dialog box to log off, shut down, or shut down and restart the terminal. Figure 5-1 shows the **Shutdown Window** dialog box.

Figure 5-1 Shutdown Window Dialog Box



Click on the **Shutdown** command button in the **Winterm Connection Manager** to invoke this dialog box. The following table describes the functions of this dialog box.

Table 5-2 Shutdown Window Dialog Box

Function	Description
Logout	Click on this radio button to invoke the Terminal Login dialog box. By default this command button is not activated. You must enable the terminal's security function to activate this radio button.  Note See the administrators guide or your system administrator for more information about logging out.
Shutdown the Terminal	Click on this radio button to shut down the terminal without restarting it. A dialog box displays after you initiate this action. It prompts you about whether you want to continue. By default this radio button is activated and enabled.
Shutdown and Restart	Click on this radio button to shut down then restart the terminal. By default this function is activated.

6

Multiple Sessions

Setting Up Multiple Sessions

To start multiple sessions:

1. Click on a connection in the **Connection Name** list in the **Winterm Connection Manager** to launch your first session. (See “Managing Connections” for more information about configuring connection parameters).
2. Press **Ctrl+Alt+End** while the connection is active to return to the **Winterm Connection Manager**.
3. Click on another connection in the **Connection Name** list to launch another session.

Managing Multiple Sessions

Your terminal is designed to handle multiple sessions. The number of active sessions you can have with your terminal is dependent on the following factors:

- Model number
- Amount of RAM
- The types of connections open
- What type of account you have



Note

Model 3200LE can support a maximum of 1 RDP connection, or 2 ICA or 3 terminal emulation simultaneous connections.

See your system administrator for detailed information about your terminal's ability to conduct multiple sessions.

Manipulating Multiple Sessions

With multiple sessions active, you can toggle between sessions. To toggle between sessions:

- Press **Ctrl+Alt+↑** to proceed to the previous session.
- Press **Ctrl+Alt+↓** to proceed to the next session.

You can also return to the **Winterm Connection Manager** by pressing **Ctrl+Alt+End**.

7

Getting Help

Getting Help provides solutions to problems that may occur while you are using your terminal.

Troubleshooting Your Terminal

Troubleshooting Your Terminal, Table 7-1, lists some common problems and the solutions to those problems.

Table 7-1 Troubleshooting the Terminal

Problem	Solution
When you turn on the terminal nothing happens.	<ol style="list-style-type: none">1. Ensure that the power cord is connected to the power connector on the terminal's back panel.2. Ensure that the power cord is plugged into an AC outlet that works.
When you turn on the terminal the screen remains blank and the power indicator light remains orange.	Turn the terminal off then on again.
During power up the following message displays: Keyboard testing failed	Ensure that the keyboard cord is connected to the keyboard connector on the terminal's back panel.
When you turn on the terminal, the Winterm Connection Manager or the WBT Setup Wizard appears, but the mouse does not function.	Ensure that the mouse cord is properly connected.

Table 7-1 Troubleshooting the Terminal, Continued

Problem	Solution
You are not able to make a network connection using the Winterm Connection Manager .	<ol style="list-style-type: none"> 1. Verify that the network cable is properly connected. 2. Verify that the network cable is connected to a hub or other network outlet. 3. Check with your network system administrator to ensure that the WBT is set up properly.
While connected to a server the keyboard and the mouse freeze.	<p>The connection to the server may be broken.</p> <ol style="list-style-type: none"> 1. Turn the terminal off, then on again. 2. Attempt to make another connection. <p>If you can not make the connection again:</p> <ol style="list-style-type: none"> 1. Verify that the network cable is properly connected. 2. Check with your network system administrator to ensure that you are using the correct network cable.
You are not able to print using the parallel port.	<ol style="list-style-type: none"> 1. Make sure that the printer is plugged into the AC outlet and turned on. 2. Check the cable connection between the printer and the terminal. 3. Ensure that the printer is on line. 4. Ensure that the printer is properly configured in the print manager. 5. Ensure that the printer has not been paused.
You are not able to print using the serial port.	<ol style="list-style-type: none"> 1. Make sure that the printer is plugged into the AC outlet and turned on. 2. Check the cable connection between the printer and the terminal. 3. Ensure that the printer is on line. 4. Ensure that the printer is properly configured in the print manager. 5. Ensure that the printer has not been paused.

**Note**

If any other error messages are displayed, you have any other problems, or you cannot find a solution in this table, contact your network system administrator.

Index

Numerics

100Base-T 7
10Base-T 7

C

Control keys
Ctrl+Alt+Down Arrow 32
Ctrl+Alt+End 31 to 32
Ctrl+Alt+Up Arrow 32
F2 9, 15, 21

D

Dialog boxes
Mouse Properties 25
Shutdown Window 29
Terminal Login 29
Terminal Properties 9, 15, 21
Winterm Connection Manager 9, 15, 21
Display screen resolution 15

E

Energy savers 15
Entry-level modular-type terminal 2

F

Functions
Character Repeat 24
Connect 28
Desktop Area and Refresh Frequency 17
Enable Energy Savers 19
End 28
Keyboard 23
Logoff 29
Repeat Delay 24
Repeat Rate 24
Reset the Terminal to Factory Default
Property Settings 12
Screen Saver 19
Shutdown and Restart 29
Shutdown the Terminal 29

Test 17
Turn Off Monitor 19
Wait 19

I

ICA 1
Independant Computing Architecture 1
Integrated-CRT model number
3720SE 1

L

Logging off the terminal 29

M

Modular model numbers
3200LE 1
3320SE 1
3350SE 1
3360SE 1

P

Parallel port 7
PCMCIA 7
Properties sheets
Configure 27
Connections 27
Display 15
General 9
Input 21
SysInfo 9

R

RAM 12
RDP 1
Remote Desktop Protocol 1

S

Serial port 7
Shutting down and restarting the terminal 29
Shutting down the terminal 29
Standard Integrated-CRT terminal 6
Standard modular-type terminal 3 to 5

T

TN3270 1
TN5250 1
Touch screen 7

U

USB port 7

W

Wall mount 7
WBT *xvii*, 1

WBT model numbers

3200LE *xvii*
3320SE *xvii*
3350SE *xvii*
3360SE *xvii*
3720SE *xvii*

Windows 2000 1

Windows 3.1 7

Windows 95 7

Windows 98 7

Windows CE 1

Windows NT 1

Windows-based terminal 1

Wizards

Setup 9, 27

WBT Setup 33

Winterm 3000 Series Windows[®]-based Terminal Users Guide

Written and published by:
Wyse Technology Inc., May 2000

Created using FrameMaker[®], Acrobat[®], and Magellan[™]

The on-line book is provided in both PDF and HTML versions, presented on both CD-ROM and at www.wyse.com.