

*SECURE CLOUD POS TERMINAL*  
*xCE\_E200I SERIES*

*INSTALLATION GUIDE*

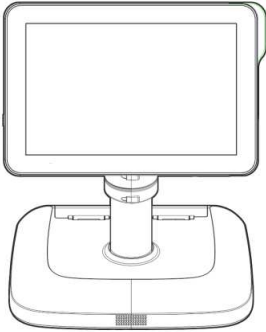


**xCE\_200I series:**

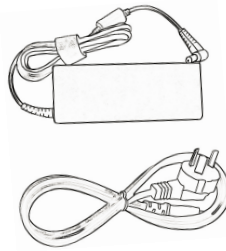
- xCE\_E200I-15YXF
- xCE\_E200I-15YXX
- xCE\_E200I-15NXF
- xCE\_E200I-15NXX

# 1. Package Content

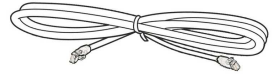
To check your device and the accessories after unpacking:



■ xCE\_E200I



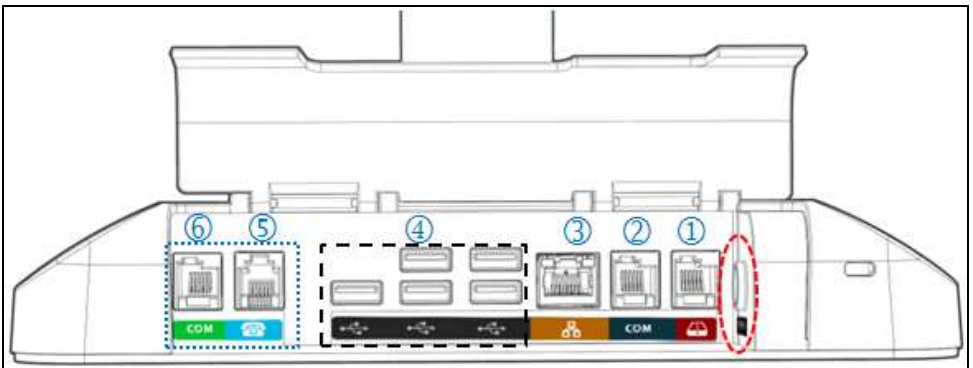
■ Power adaptor & cord



■ Cash Drawer cable

# 2. Before Starting

- A. Open the cable compartment cover behind the stand of terminal and find the power input on the rear side of xCE\_E200I (Figure 1, marked by red circle).



(Figure 1)

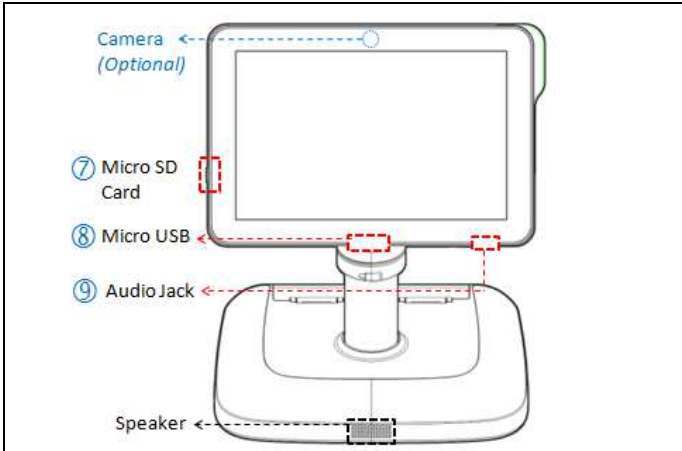
xCE\_E200I supports a variety of I/O ports (Figure 1)

- ①- 1 x Cash drawer port
- ②- 1 x RJ-12 COM port
- ③- 1 x RJ-45 (Ethernet) port
- ④- 5 x USB Host ports

Optional ports (marked by blue square)

- ⑤- 1 x RJ-11 (Modem) port
- ⑥- 1 x RJ-12 COM port

Other ports on the side face of screen (Figure 1-1)



(Figure 1-1)

- ⑦- 1 x Micro SD card slot
- ⑧- 1 x USB Device (Micro USB) port
- ⑨- 1 x Micro SD card slot

**Note:** A “click” sound should be heard when the micro SD card has been inserted properly.

Other features on E200-I:

- Camera for customer facing (Optional, as Figure 1-1)
- Wireless communication built-in: Wi-Fi (802.11 b/g/n) & Bluetooth.

B. Make sure your power adaptor on hand comply with following spec.

■ Power Adapter spec:

**Input:** 100-240Vac 50/60Hz

**Output:** 24V DC, 2.5A

(Use only the AC adapter approved and provided by XAC Automation Corporation for use with this device. Use of any other AC adapter may cause a risk of fire or explosion)

- Operating Temperature: 0 °C to 40 °C
- RTC battery spec.: 3V, CR2450

**Caution:** Risk of explosion if the battery is replaced by an incorrect type.  
Please dispose used battery according to the instructions.

### 3. Powering On Terminal

Plug the power adaptor connector into the power jack of E200-I(as shown in Figure 1) and plug the power cord into a surge suppressor (recommended) or a wall socket to boot up the device.

### 4. Using Magnetic Card Reader

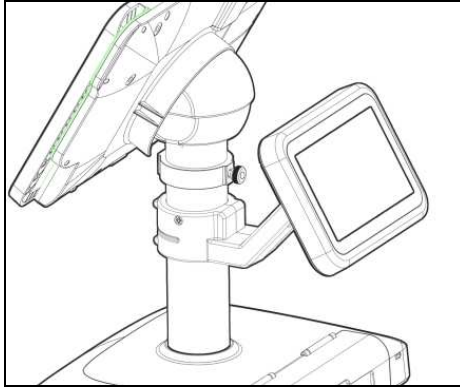
Secure Magnetic Card Reader is located at the right side of terminal. Slide the card in either direction through the slot at even speed.  
(Figure 2)



(Figure 2)

## 5. Customer facing display (Optional)

xCE\_200I provides a 5” shopper display as option for the clients to see the payment amount and the information or the ads at the cashier. (Figure 3)



(Figure 3)

## 6. Fitting the view angle of display

The design of xCE\_E200I stand is flexible for each user to find his/her best view angle to operate the touch display.

This multi-angle stand allows to:

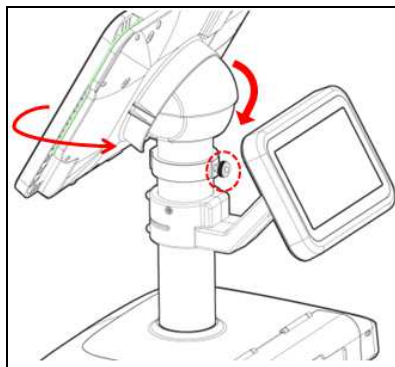
Rotate: 90° (Portrait to Landscape) (Figure 4)

Swivel: 0 ±155° / Tilt: 14 (down) ~85°(up) (Figure 5)

Note: The swivel force is adjustable by turning the screw marked in red circle.



(Figure 4)



(Figure 5)

## 7. Guidelines to properly CLEAN your LCD screens

- Turn your display off and allow it to cool.
- Make sure your cloth is clean and free of any grit before starting.
- Spray a liberal amount of the cleaning solution onto one portion of the cloth
- Using light pressure, wipe the screen to evenly distribute the solution on the screen.
- Rotating the cloth to a dry portion, wipe the screen until it is dry. You may need to rotate the cloth a second time. Always use light wiping pressure.
- Wipe gently and do not overwork or apply excessive pressure to avoid damaging the surface or surface coatings. Finally clean the edges and corners by lifting any dust or debris onto the cloth or use a clean soft brush or a vacuum with a clean soft brush attachment.
- Read the special considerations below.

**Warning Note:** Using Windex, Pledge or other similar household products that contain ammonia on your screen can damage the coating of your screen.

## **FCC for Part15B:**

### **Federal Communication Commission Interference Statement**

This device complies with Part 15 of the FCC Rules. Operation is subject to the following two conditions: (1) This device may not cause harmful interference, and (2) this device must accept any interference received, including interference that may cause undesired operation.

This equipment has been tested and found to comply with the limits for a Class A digital device, pursuant to part 15 of the FCC Rules. These limits are designed to provide reasonable protection against harmful interference when the equipment is operated in a commercial environment. This equipment generates, uses, and can radiate radiofrequency energy and, if not installed and used in accordance with the instruction manual, may cause harmful interference to radio communications. Operation of this equipment in a residential area is likely to cause harmful interference in which case the user will be required to correct the interference at his own expense.

FCC Caution: Any changes or modifications not expressly approved by the party responsible for compliance could void the user's authority to operate this equipment.

### **Radiation Exposure Statement:**

This equipment complies with FCC radiation exposure limits set forth for an uncontrolled environment. This equipment should be installed and operated with minimum distance 20cm between the radiator & your body.

## **FCC for Part68: for xCE\_E200I models with modem function.**

xCE\_E200I-15YXF, xCE\_E200I-15YXX

ID NO. US: N7KMM01B200I15YXF;

## **FCC REQUIREMENTS**

This equipment complies with Part 68 of the FCC rules and the requirements adopted by the ACTA. On the bottom of this equipment is a label that contains, among other information, a product identifier in the format US: N7KMM01B200I15YXF. If requested, this number must be provided to the telephone company. Applicable connector jack Universal Service Order Codes ("USOC") for the Equipment is RJ11C.

A plug and jack used to connect this equipment to the premises wiring and telephone network must comply with the applicable FCC Part 68 rules and requirements adopted by the ACTA. A compliant telephone cord and modular plug is provided with this product. It is designed to be connected to a compatible modular jack that is also compliant. See installation instructions for details.

The REN is used to determine the number of devices that may be connected to a telephone line. Excessive RENs on a telephone line may result in the devices not ringing in response to an incoming call. In most but not all areas, the sum of RENs should not exceed five (5.0). To be certain of the number of devices that may be connected to a line, as determined by the total RENs, contact the local telephone company. For products approved after July 23, 2001, the REN for this product is part of the

product identifier that has the format US: N7KMM01B200I15YXF. The digits represented by 01B are the REN without a decimal point (*e.g.*, 03 is a REN of 0.3).

If your equipment causes harm to the telephone network, the telephone company will notify you in advance that temporary discontinuance of service may be required. But if advance notice isn't practical, the telephone company will notify the customer as soon as possible. Also, you will be advised of your right to file a complaint with the FCC if you believe it is necessary.

The telephone company may make changes in its facilities, equipment, operations or procedures that could affect the operation of the equipment. If this happens the telephone company will provide advance notice in order for you to make necessary modifications to maintain uninterrupted service. If trouble is experienced with this telephone equipment, for repair or warranty information, please contact the following address and phone number for information on obtaining service or repairs. If the equipment is causing harm to the telephone network, the telephone company may request that you disconnect the equipment until the problem is resolved.

**COMPANY:** Zakus, INC.

**ADDRESS:** 146 Main Street, suite 208 Los Altos, CA 94022 U.S.A.

**TEL NO:** 650-917-9158



XAC Automation Corporation

886-3-577-2738

[www.xac.com.tw](http://www.xac.com.tw)

The above information is the exclusive intellectual property of XAC Automation Corporation and shall not be disclosed, distributed or reproduced without permission of XAC Automation Corporation.

XAC AUTOMATION CORP. shall not be held liable for technical and editorial omissions or errors made herein; nor for incidental or consequential damages resulting from the furnishing, performance or use of his material.

This document contains proprietary information protected by copyright. All rights are reserve.