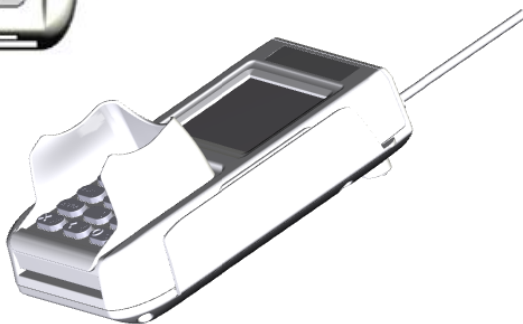


RTOS PAYMENT DEVICE

RP-10

INSTALLATION GUIDE



1. PACKAGE CONTENT



■ RP-10



■ Privacy Shield
(Optional)

2. DEVICE OVERVIEW

RP-10 Key Buttons & Interface Ports (**Figure 1**):



Figure 1

FRONT AREA	1	2.4" Display
	2	Rubber Keypad
	3	Magnetic Strip Reader (MSR) slot
	4	Smart Card Reader (SCR) slot
REAR AREA	5	USB cable (type A)
	6	Battery Compartment

■ **RP-10 power spec:**

Input: 5V DC, 0.5A

- Operating Temperature: 0°C to 40°C

3. POWER ON/OFF THE DEVICE

To power on the device, please plug the USB cable into the USB port of your host terminal or POS.

Note: When there is no action on RP-10 after 60 seconds, the device will enter power saving mode. Please short press any button on keypad to wake up the device.

4. USING THE MAGNETIC CARD READER

Swipe the card through the slot with magnetic stripe side facing the same direction as the display. (Figure 3)



Figure 3

5. USING THE IC CARD READER

Insert an IC card into the slot (Figure 4) with the chip side facing the same direction as the touch panel (Figure 5).



Figure 4



Figure 5

6. USING THE KEY PAD

After inserting the chip card, Press the numeric key as below keypad (**Figure 6**) to enter the desirable numbers. Press Cancel (X) key to terminate any current function and press the Enter (O) key to confirm a value or an option.



Figure 6

7. USING THE CONTACTLESS CARD READER

Tap the contactless card on top of the contactless logo (**Figure 7**).



Figure 7

9. INSERT SIM & SAM CARD

After removing the battery cover, the user can find SAM *2 slots at the bottom side of device.

Please insert the card correctly as the icon shown on the cover:



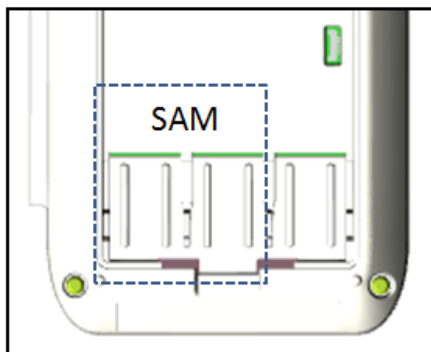


Figure 10

FEDERAL COMMUNICATION COMMISSION INTERFERENCE STATEMENT

This device complies with Part 15 of the FCC Rules. Operation is subject to the following two conditions: (1) This device may not cause harmful interference, and (2) this device must accept any interference received, including interference that may cause undesired operation.

Note: This equipment has been tested and found to comply with the limits for a Class A digital device, pursuant to part 15 of the FCC Rules. These limits are designed to provide reasonable protection against harmful interference when the equipment is operated in a commercial environment. This equipment generates, uses, and can radiate radio frequency energy and, if not installed and used in accordance with the instruction manual, may cause harmful interference to radio communications. Operation of this equipment in a residential area is likely to cause harmful interference in which case the user will be required to correct the interference at his own expense.

FCC Caution: Any changes or modifications not expressly approved by the party responsible for compliance could void the user's authority to operate this equipment.

This transmitter must not be co-located or operating in conjunction with any other antenna or transmitter.

Radiation Exposure Statement:

This equipment complies with FCC radiation exposure limits set forth for an uncontrolled environment. This equipment should be installed and operated with minimum distance 20cm between the radiator & your body.

Note: The country code selection is for non-US model only and is not available to all US model. Per FCC regulation, all WiFi product marketed in US must fixed to US operation channels only.



XAC Automation Corporation
886-3-577-2738

The above information is the exclusive intellectual property of XAC Automation Corporation and shall not be disclosed, distributed or reproduced without permission of XAC Automation Corporation.