

展开尺寸: 375*150mm

BLUETOOTH SPEAKER MANUAL

PRINTED ON 150G PAPER
FOLD AND PLACE ON THE BOTTOM OF THE BOX

☐ = DIE LINES (DO NOT PRINT)

☐ = FOLD LINES (DO NOT PRINT)



wireless speaker bottle.



USER MANUAL

Important Notes 1



- Please read this manual carefully before use.
- Remove speaker from the bottle body before washing.
- Please charge speaker with power adapter (output rated voltage 3.4-4.2V).
- Charge in full before first use.

Product Contents 2



1 TAL™ Wireless Speaker Bottle



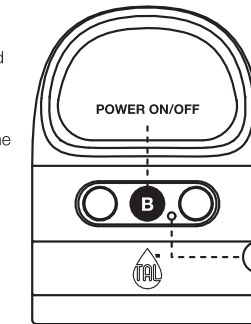
2 User Manual

Technical Information 3

Working Voltage	3.4-4.2V
Charging Power	DC5V/500mA
Bluetooth Version	RDABT Host 4.2
Recharge Method	micro USB
Battery Capacity	450mAh
Rated Power	3W
Bluetooth Range	<25 feet
Bottle Material	Tritan (BPA Free)
Product Size	3.07" x 3.07" x 11.73"
Product Weight	0.5 lbs

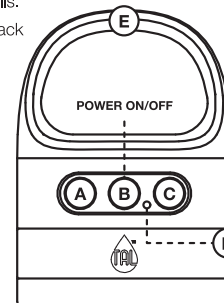
Connecting Your Device 4

- Turn on the bluetooth speaker by pressing and holding **(B)**.
- Turn your Bluetooth device on search mode. Find device titled "TAL BT SPEAKER" and select.
- Once a connection with media device has been established, the flash will slow, remaining blue.



Bottle Functions 5.1

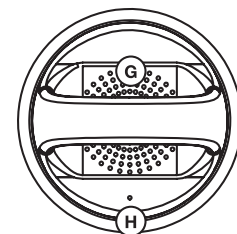
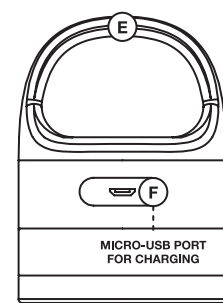
- (A) <<** Press to skip to previous track. Press and hold to decrease volume.
- (B) ||** Press and hold to turn on/off. Press to pause/play music or answer incoming calls or end phone calls. Press **(B)** button twice to call back the last person you talked to.
- (C) >>** Press to skip to next track. Press and hold to increase volume.
- (D)** LED light indicates if device is paired or needs to be charged.
- (E)** **(A) + (C)** Buttons: Press and hold at the same time to toggle on/off strobing lights.



When not connected to a device, Bluetooth Bottle will automatically turn off after 15 minutes.

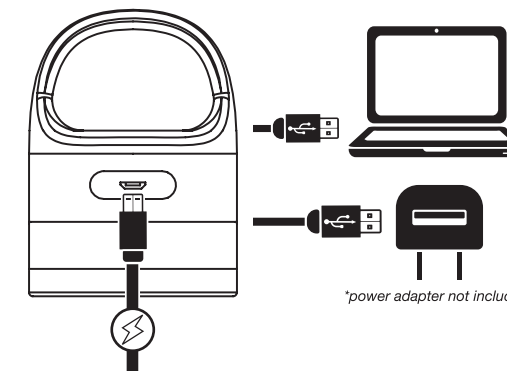
Bottle Functions 5.2

- (E)** Color-changing strobing lights (see page 5.1 for toggle on/off instructions).
- (F)** To charge your bluetooth speaker, connect the micro-USB end to the port.
- (G)** Speaker
- (H)** Microphone (see page 5.1 for phone calls instructions).



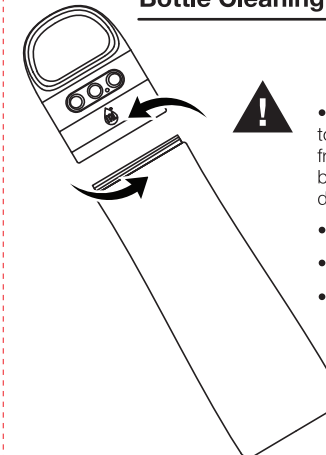
Power Recharging 6

Connect the USB cable included to charge your bluetooth speaker bottle through a computer USB port or power adapter.
Low Power Warning: When voltage is lower than 3.5V, two beeps will sound and the battery indicator LED will flash blue. Leave for at least two hours for full charge.



*power adapter not included

Bottle Cleaning Instructions 7



- To clean the bottle, twist to separate the speaker lid from the bottle body. Clean bottle separately to avoid damage to the speaker.
- Hand wash recommended.
- Use non-abrasive cleaner.
- To clean speaker, wipe with a damp cloth.



The Bluetooth® word mark and logos are registered trademarks owned by the Bluetooth SIG, Inc. and any use of such marks by TAL™ is under license. Other trademarks and trade names are those of their respective owners.

WWW.TALHYDRATION.COM
NEW YORK, NY 10018
MADE IN CHINA

FCC ID: 2ADK3XO-9112

NOTE: This equipment has been tested and found to comply with the limits for a Class B digital device, pursuant to part 15 of the FCC Rules. These limits are designed to provide reasonable protection against harmful interference in a residential installation. This equipment generates uses and can radiate radio frequency energy and, if not installed and used in accordance with the instructions, may cause harmful interference to radio communications. However, there is no guarantee that interference will not occur in a particular installation. If this equipment does cause harmful interference to radio or television reception, which can be determined by turning the equipment off and on, the user is encouraged to try to correct the interference by one or more of the following measures:

- Reorient or relocate the receiving antenna.
- Increase the separation between the equipment and receiver.
- Connect the equipment into an outlet on a circuit different from that to which the receiver is connected.
- Consult the dealer or an experienced radio/TV technician for help

Changes or modifications not expressly approved by the party responsible for compliance could void the user's authority to operate the equipment. This device complies with Part 15 of the FCC Rules. Operation is subject to the following two conditions:

- this device may not cause harmful interference, and
- this device must accept any interference received, including interference that may cause undesired operation.