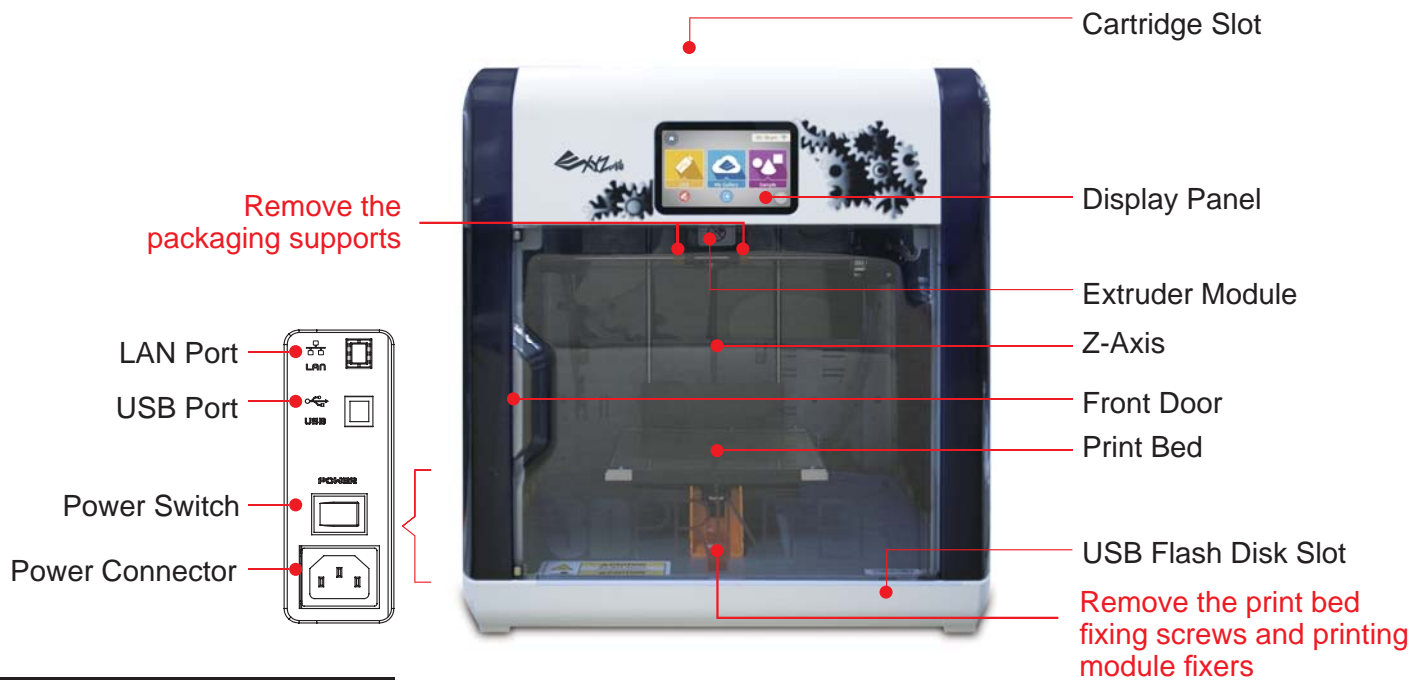




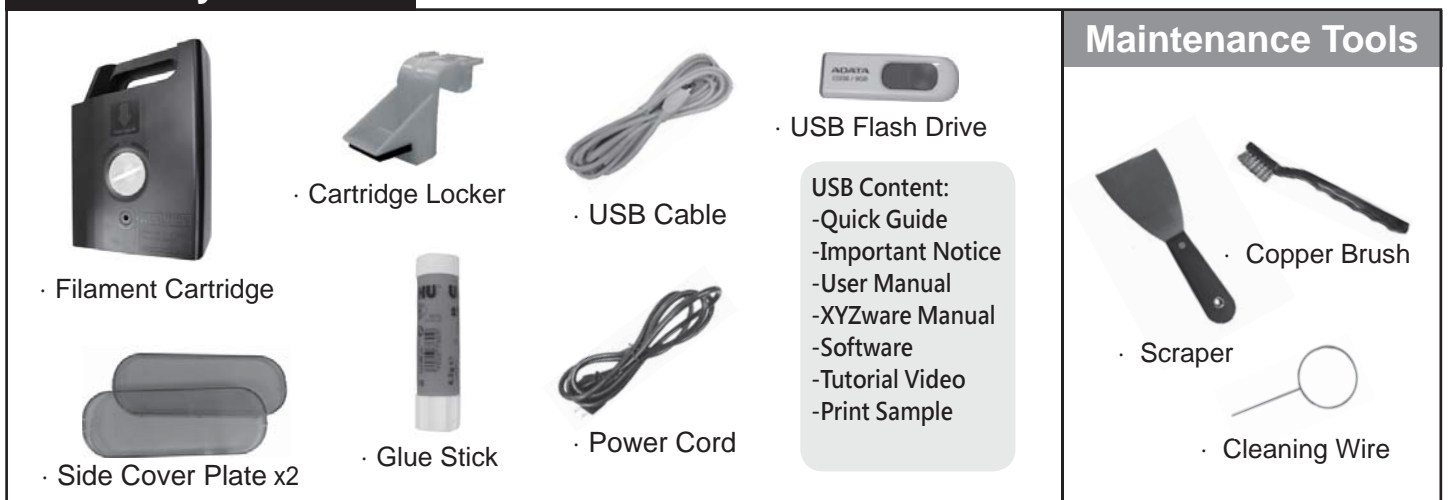
da Vinci 1.1 Plus Quick Guide

- Product Manual 02-08
- XYZware 09
- Print Bed Leveling and Product Specification 10-11
- Support Details 12

Product Overview



Accessory Checklist



Important Safety Instruction for Use of Maintenance Tools



- The maintenance tools provided should be only handled by an adult. Please keep the tools away from children. Incorrect handling or maintenance of the printer may cause damage to the product or personal injury.
- Be sure to maintain the printer while the print bed is cool.



- The scraper is used to remove the object from the print bed when printing has finished and the print bed is cool.



- Over time, carbon deposits or filament dust buildup in the nozzle may decrease its performance. It is advised to clean the nozzle with the cleaning wire by activating "CLEAN NOZZLE" mode after every 25-hour of printing.



- Molten filament may be left on the tip or surface of the extruder and inside the drive gear and may decrease the performance of the printer, or lead to calibration result of "Error". The copper brush is used to clean and remove the filament pieces from the extruder in these cases.

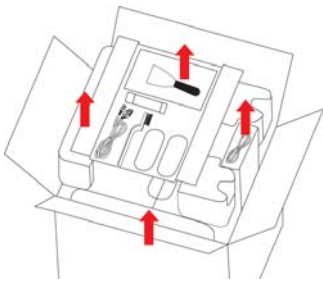
Important Safety Instruction



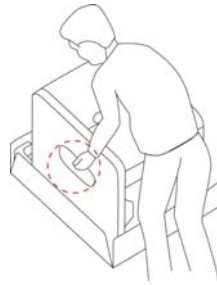
Do not place the printer in humid or dusty environment such as bathrooms and high traffic areas. Do not place the printer on a rickety surface and/or inclined position. Printer may fall down/or tumble and it may cause serious injury. Do not touch the interior of the printer while printing. As it may be hot and include moving parts. Please keep the front door closed during printing to avoid injury.

Open the box

Note: All packaging materials should be removed before powering up the printer.



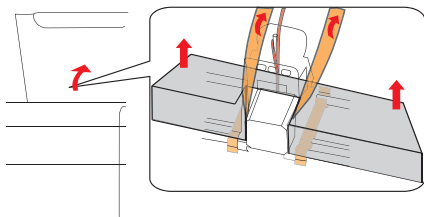
1 Open the box and remove the accessories and the cushion.



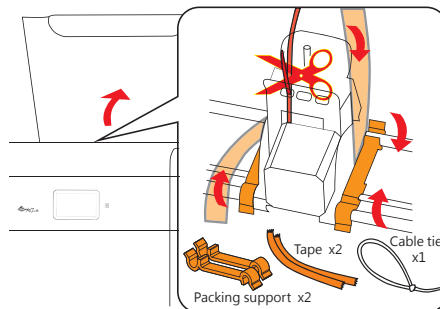
2 Take out the printer by the grip holds.



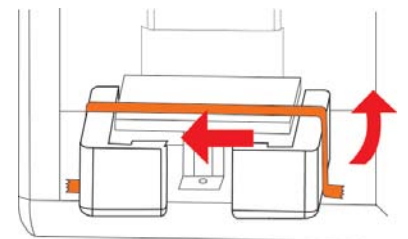
3 Remove plastic bag and all tapes.



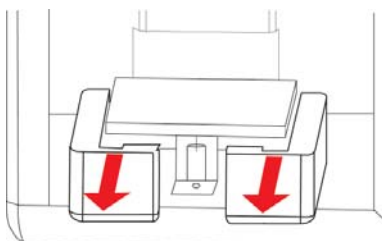
4 Open the top cover, and remove the cushions by the extruder



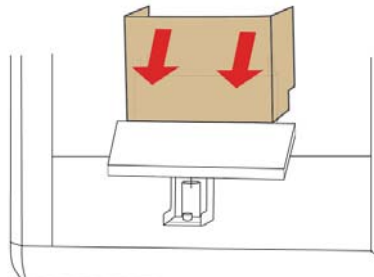
5 Remove the cardboard.



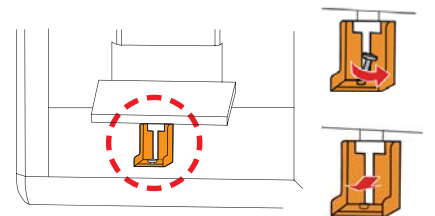
6 Remove the tape on the print bed.



7 Remove the cushions by the print bed.



8 Remove the cardboard.



9 Remove the bottom screw and plastic piece under print bed.



10 Insert the USB flash drive to install XYZware for printing.



11 Use the USB cable to connect the printer to PC. Connect the power cord to the printer then turn on the power switch.

Initial Settings



After powering on the printer for the first time, complete the simple setup as instructed on the screen. Then select language and press to proceed.

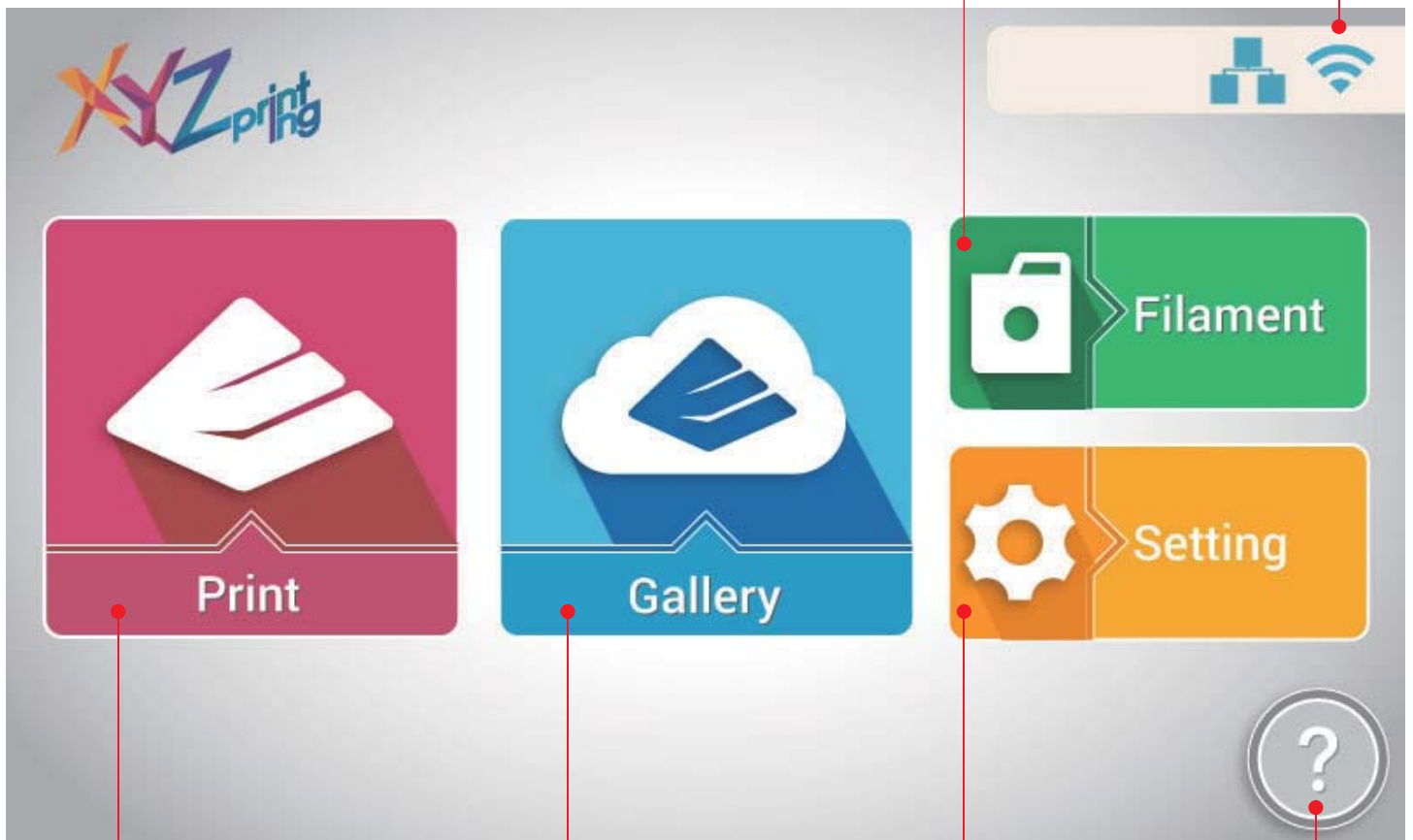
Home Menu

Filament

Load, unload filament and view the information about the filament.

Network Status

Display online status of Wi-Fi or Ethernet network.



Browse the file for printing

Print from USB flash drive*, "My Gallery" and sample folder.

Print from the cloud gallery

Browse the content of XYZprinting gallery and select for printing.

Settings

View the printer status and system settings.

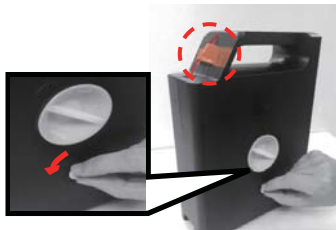
Function Guidelines

Home menu basic operation introduction.

*Please export .stl files into .3w format via XYZware before printing.

Load Filament

First install the cartridge to the cartridge slot...



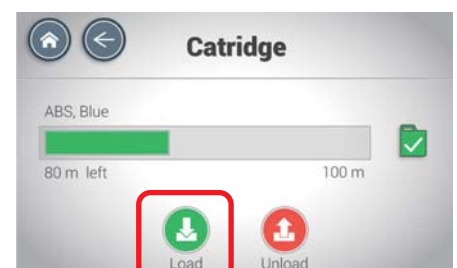
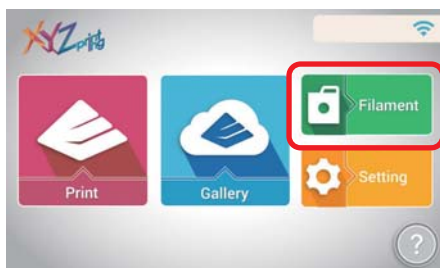
1 Remove the filament stopper and tape.



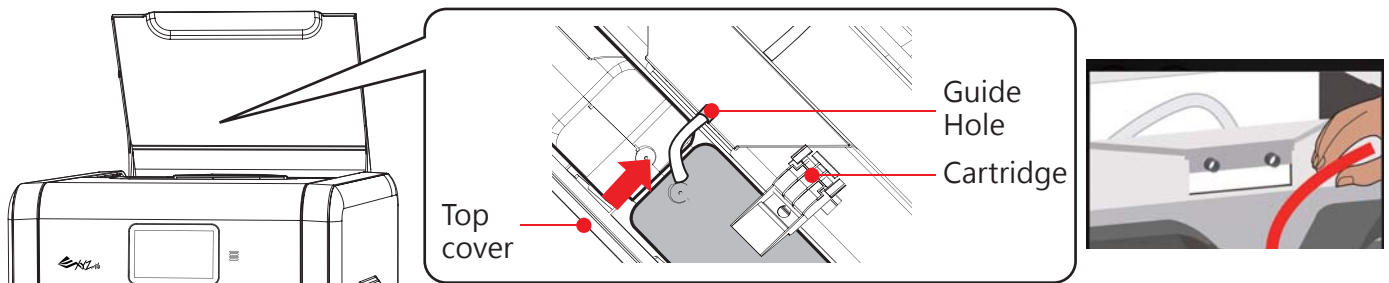
2 Install the new filament cartridge into the empty slot.



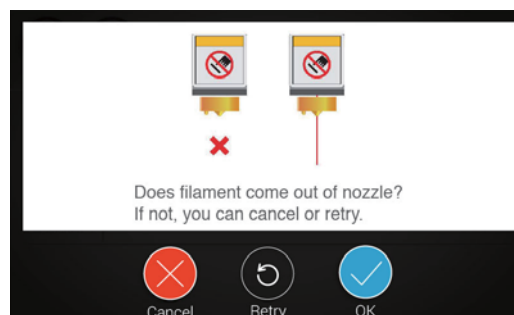
3 Place and push to click the cartridge.



4 Select "Filament" > "Cartridge" > "Load".



5 Insert filament into the guide hole until the printer starts to load filament. (When the loading begins, you will hear the sound of motor and can see the filament is pulled into the printer.)
 Note : Before pushing the filament into the guide hole, please cut the tip of the filament off at a 45° angle with a cutting pliers, filament loading will be easier.

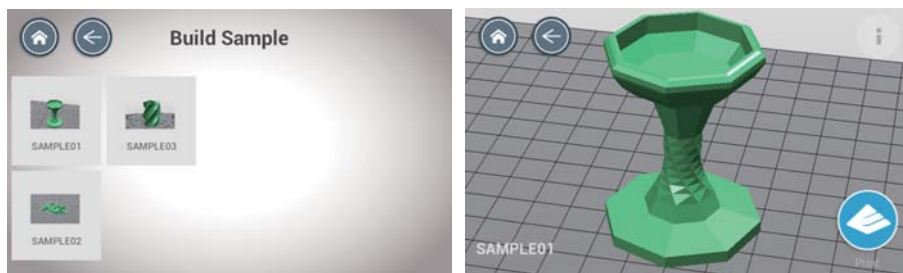


6 If filament doesn't come out from the nozzle, please press "Retry" or "Cancel". When filament is dripping off the nozzle, tap to finish.

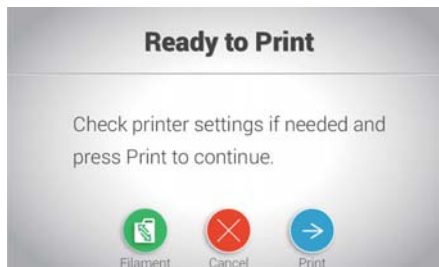
Sample Print




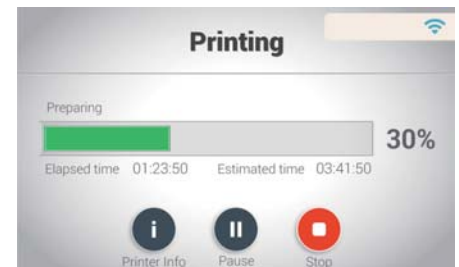
- 1 Select "Print" > "Sample " on the screen.




- 2 Select a sample to print, and tap  to print.



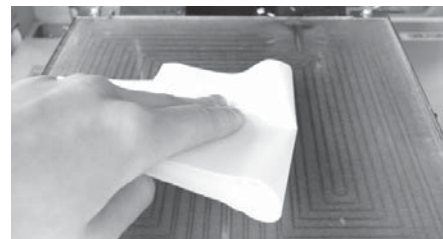
- 3 Apply glue stick gently and evenly to the print bed base on the size of the printing object previewed on screen, and press  to print.



- 4 Printing process is shown on the screen. You may click  for "Printer info" during printing.

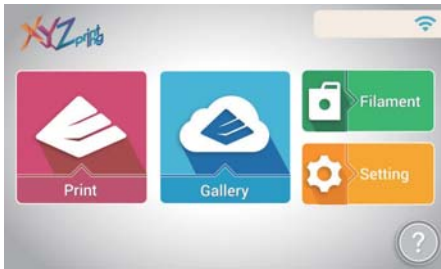


- 5 Remove the printed object when the print bed has descended.

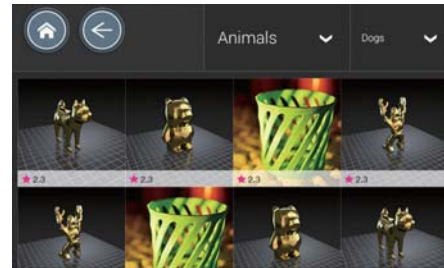


- 6 Cover a damp cloth on the cold print bed for 2-3 minutes, and wipe the glue off gently (Scrape off the glue if necessary).

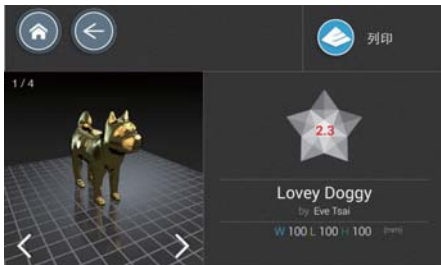
Cloud Gallery




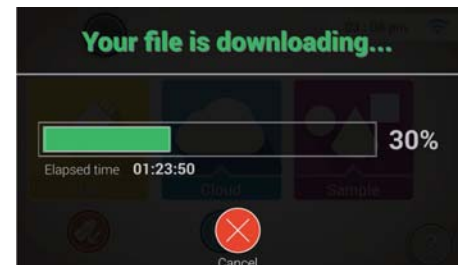
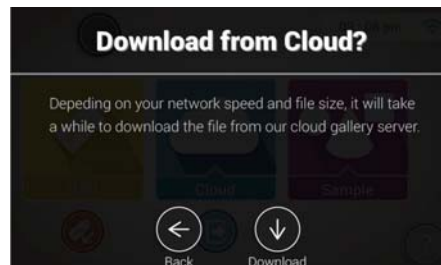
1 Once the printer is connected to the Internet, select "Gallery" to go to XYZprinting cloud gallery.



2 Browse the Gallery and switch among different categories; tap on the desired model for a zoomed-in preview.



3 Preview the image and information of the selected model, and tap  to proceed.



4 Press  to download, and wait for the download to complete.

Caution:

Before printing any model from any media, always remember to apply glue to the printing area on the printing bed. To clean the printing bed after printing is complete, please refer to the Sample Printing section.

Unload filament

Please always complete the procedure for "Unload Filament" before changing a new cartridge.

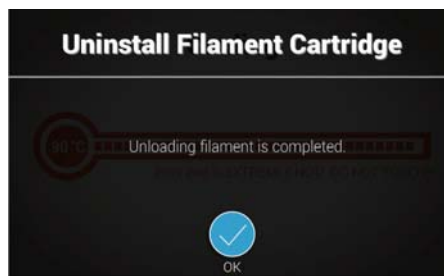


1 Select "Filament" > "Cartridge" > "Unload" on the screen



Gently pull filament out of "Filament Socket 1"

2 Filament is unloaded from extruder automatically. Gently pull filament out from the guide hole when prompted.



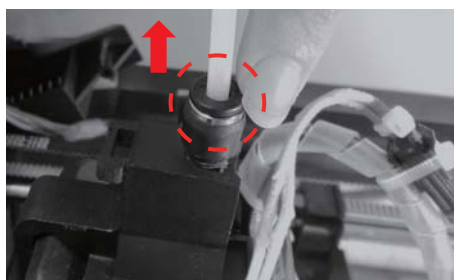
3 When filament is pulled out, press .



4 Remove cartridge locker and the cartridge.

Filament troubleshooting

When the filament is loaded automatically or is stuck in the extruder module, please first unload filament by following the steps above. And then press on the black rubber fixers on either ends of the filament tube. You may also follow the instructions on the screen for troubleshooting.



Status



1 If the filament is stuck in the extruder module, press the release arm on the side of the extruder module to extract the stuck filament.



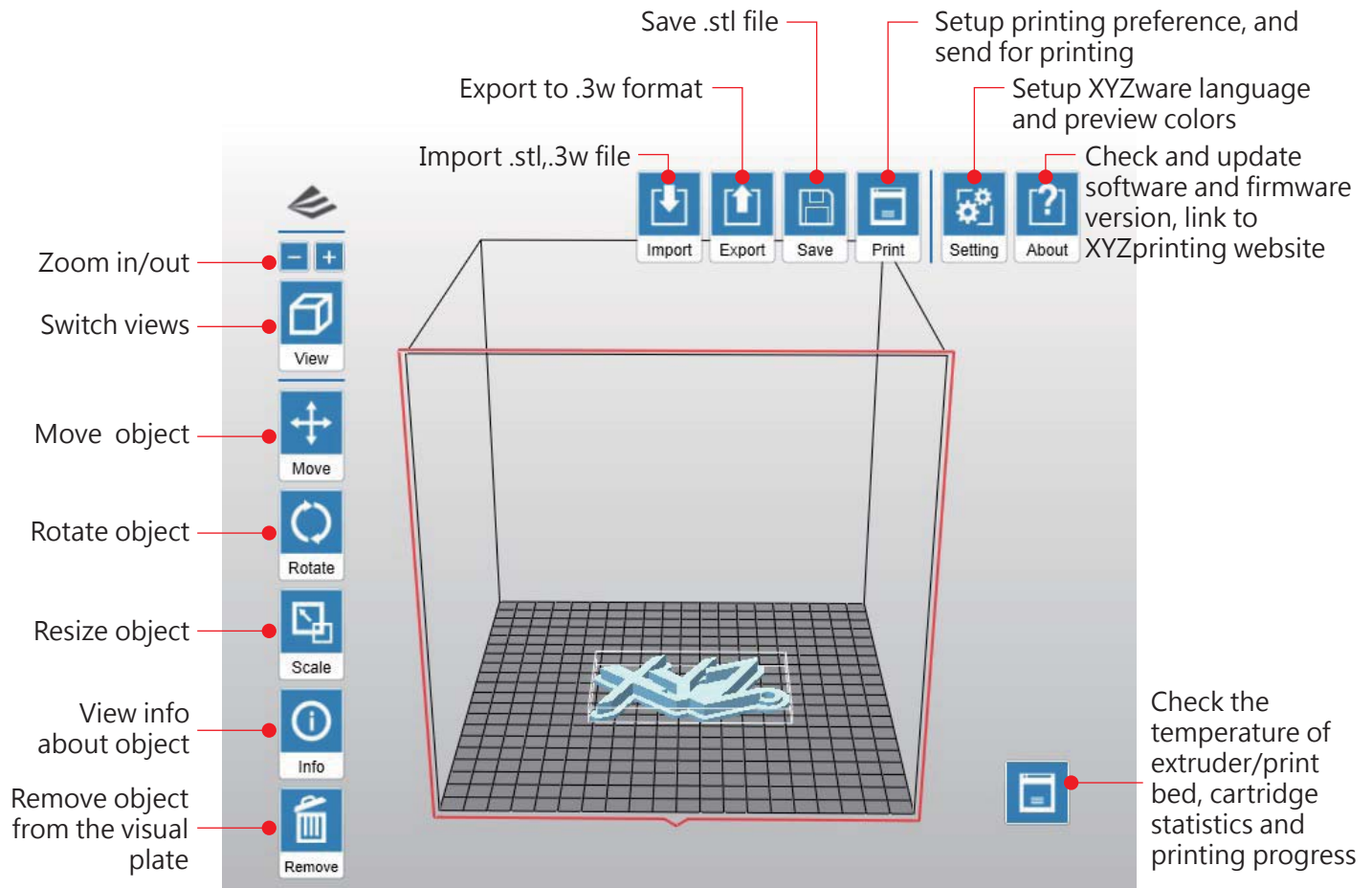
2 If the filament is stuck at the entrance of the guide tube, please press the release arm by the entrance to extract the stuck filament.



3 After removing the filament, plug the filament tube directly back to its original position to complete the re-installation.

XYZware

To transmit print object(s) via USB flash drive or PC to your da Vinci printer, please prepare the file with XYZware. When your PC is connected to the printer, you can send the object(s) to printer directly. XYZware virtualizes the printing platform on the screen. You may move, rotate and resize the object(s) in the software, and send the file for printing via USB flash drive or PC.



XYZware is compatible with Windows XP, Windows 7+ and Mac OS 10.7+, please install the software via the USB flash drive in accessory tray or download the latest XYZware for your OS from XYZprinting website:

<http://support.xyzprinting.com/Support/downloads>

For the latest software updates and further information. Please go to:

<http://support.xyzprinting.com/Support/manuals>

* Note :

Some instruction and video tutorials might require online registration to obtain authorization. Please sign up for XYZprinting membership before downloading XYZware.



This print bed has been calibrated by our professional technician before shipment. Do not adjust the platform yourself unless necessary, or contact the customer service center.




Print Bed Calibration

1. Check for firmware update

In XYZware, select "About" > "Firmware Update" .

2. Activate Calibration



Select "Setting">"Printer Settings">"Maintenance" >"Calibrate Print Bed" and press  to perform calibration.



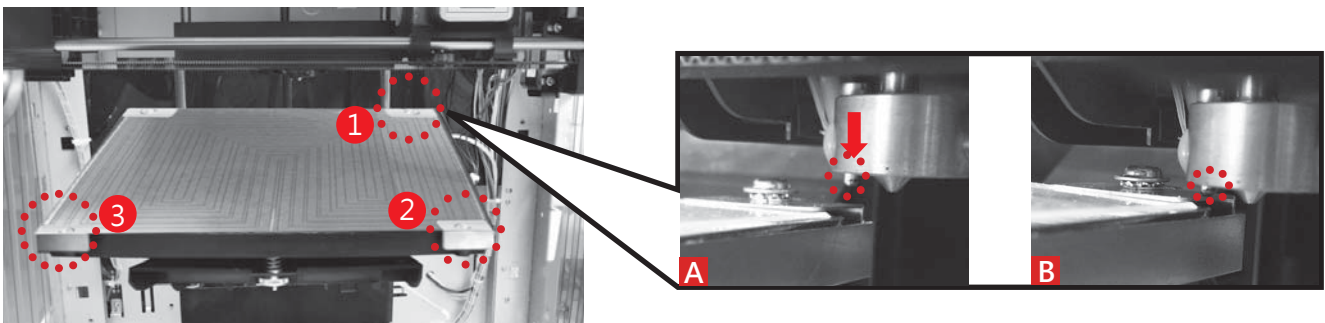
The printer starts automatic measurement. Wait for 2~3 minutes and verify the data shown.

Note: During the measurement process, the print bed and extruder module will be heated. Care should be taken during operation!

3. Wait for detecting

What does "detecting" do:

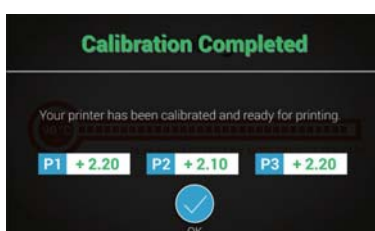
The printer measures the distance between the detecting pin and 3 measurement points at the corners of the print bed to check if the platform is leveled. When the height of the 3 points are no more than ± 0.2 from each other, the print bed is leveled.




4. Check the detecting result on the display

1. "Calibration Completed" - ready to print

The print bed is leveled; adjustment to the print bed is not required.



Skip step 5 & 6, and press  to finish.

2. "Calibration Not Completed" and "Error" is shown - cleaning & leveling is required

The detecting point is too high/low for detection or the pin/measurement point is covered by molten plastic.




Press  and proceed step 5 and 6.

3. "Calibration Not Completed" - leveling is required

Unleveled print bed may affect printout quality. Please level the printbed based on the value of P1, P2 and P3.



Press  and proceed step 6.

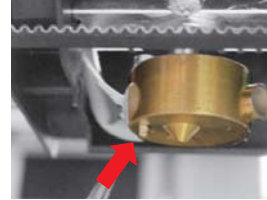
5. Clean the detecting pin

Select "Clean Nozzle" function, and brush the molten filament and dust from the detecting pin while the extruder is heated up.

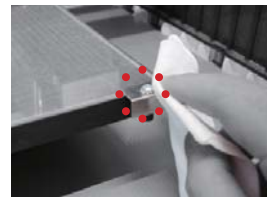


Activate "Setting" > "Printer Settings"> "Maintenance">"Clean Nozzle".

Clean the detecting pin with the copper brush

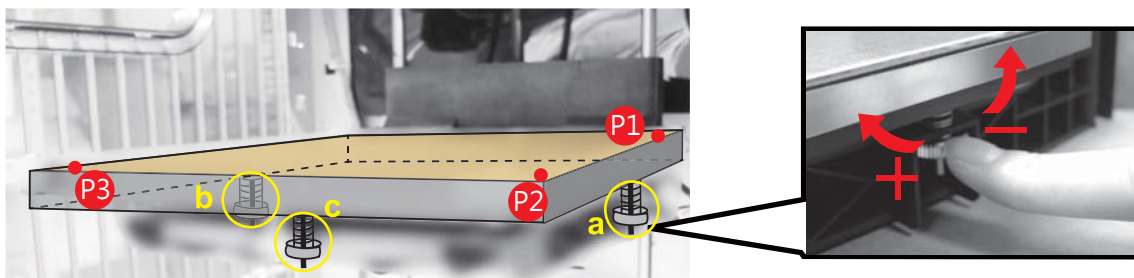


Clean the 3 measurement points



6. Level the print bed

1. The value indicates the height of point P1, P2, P3; greater value indicates the higher the detected point is.
2. Turn the 3 turning screws at location "a", "b", "c" under the print bed to level the platform.



How to adjust :

- Turn clockwise to raise, turn counterclockwise to lower.
- Adjust screw a and b may offset the diagonal. (e.g. Left turn screw b will lead to the descendant of point 2.)
- Tuning the screw for a full circle will change the value by 0.5. A single push to the screw will change the value by 0.2 to 0.25.

Thumb of rules:

- Adjust the values to the 2.3-2.6 range.
- 3 values should be no more than ± 0.2 from each other.

When finishing the adjustment, repeat the calibration from step 2 until it shows "Calibration Completed".

Specifications

Model Name	da Vinci 1.1 Plus 3D Printer	Nozzle Diameter	0.4mm
Print Technology	Fused Filament Fabrication(FFF)	AC Input	100 - 127V~4.0A 50/60Hz 200 - 240V~2.0A 50/60Hz
Print Head	Single Head	Connectivity	USB 2.0 / WiFi LAN / USB Flash Drive
Build Volume (W x D x H)	20 x 20 x 20 cm	Display	5" TFT LCD
Layer Resolution Setting	Standard 200 microns Speed 300 microns Ultra fast 400 microns Custom 100-400 microns	Control Method	Touch Panel
Filament Diameter	1.75mm	Indicator	Speaker
		Weight	27 Kg

Support Details

The troubleshooting instruction may guide you to fix the problem. If any error persists, please contact customer service center for support.

Customer Support Center:<http://support.xyzprinting.com>

Technical Support (US):supportus@xyzprinting.com

Technical Support (EU):supporteu@xyzprinting.com

Other Region:support@xyzprinting.com

Service Code	Symptom	Action	Service Code	Symptom	Action
0003	Print bed heating problem	Reboot the printer.	0029	Cartridge 1 empty	Replace cartridge 1 before printing.
0007	Cartridge 1 chip error	Reinstall the cartridge 1 or change a new cartridge.	0030	X-axis movement abnormalities	Check motor/sensor connections. Check sensor position.
0008	Cartridge 1 chip error	Reinstall the cartridge 1 or change a new cartridge.	0031	Y-axis movement abnormalities	Check motor/sensor connections. Check sensor position.
0010	Print bed heating problem	Check connections, reboot the printer.	0032	Z-axis movement abnormalities	Check motor/sensor connections. Check sensor position.
0011	Extruder 1 heating problem	Check connections, reboot the printer.	0040	Internal storage error	Check if SD card is inserted correctly.
0013	Print bed heating problem	Check connections, reboot the printer.	0050	Memory error	Reboot the printer.
0014	Extruder 1 heating problem	Check connections, reboot the printer.	0060	Internal communication error	Reboot the printer.
0028	Cartridge 1 not installed	Install/reinstall cartridge 1.	0201	Connection error between PC and printer	Reconnect PC to printer, or hotplug the cable between printer and PC.

Error message	Action
The printer is handling other task	Try again after all tasks are completed. Also check the information shown on printer display.
Unable to update printer firmware	Check Internet connectivity/Update firmware again later.
Filament 1 jammed	Unload and reload cartridge 1 and clean the nozzle.
Filament 1 loading problem	Unload and reload cartridge 1.
Filament 1 installation problem	Reinstall the cartridge 1 or change a new cartridge.
Top cover open	Close the top cover.
Filament 1 level low: 30m left	Replace cartridge 1 when necessary.
Filament 1 level low: 5m left	Replace cartridge 1 immediately.

Federal Communications Commission (FCC) Statement

You are cautioned that changes or modifications not expressly approved by the part responsible for compliance could void the user's authority to operate the equipment.

This equipment has been tested and found to comply with the limits for a Class B digital device, pursuant to part 15 of the FCC rules. These limits are designed to provide reasonable protection against harmful interference in a residential installation. This equipment generates, uses and can radiate radio frequency energy and, if not installed and used in accordance with the instructions, may cause harmful interference to radio communications. However, there is no guarantee that interference will not occur in a particular installation. If this equipment does cause harmful interference to radio or television reception, which can be determined by turning the equipment off and on, the user is encouraged to try to correct the interference by one or more of the following measures:

Reorient or relocate the receiving antenna.

Increase the separation between the equipment and receiver.

Connect the equipment into an outlet on a circuit different from that to which the receiver is connected.

Consult the dealer or an experienced radio/TV technician for help.

XYZprinting is not responsible for any radio or television interference caused by using other than recommended cables and connectors or by unauthorized changes or modifications to this equipment. Unauthorized changes or modifications could void the user's authority to operate the equipment.

This device complies with Part 15 of the FCC Rules. Operation is subject to the following two conditions: (1) this device may not cause harmful interference, and (2) this device must accept any interference received, including interference that may cause undesired operation.

This device complies with FCC radiation exposure limits set forth for an uncontrolled environment and it also complies with Part 15 of the FCC RF Rules. This equipment must be installed and operated in accordance with provided instructions and the antenna(s) used for this transmitter must be installed to provide a separation distance of at least 20 cm from all persons and must not be co-located or operating in conjunction with any other antenna or transmitter. End-users and installers must be provided with antenna installation instructions and consider removing the no-collocation statement.