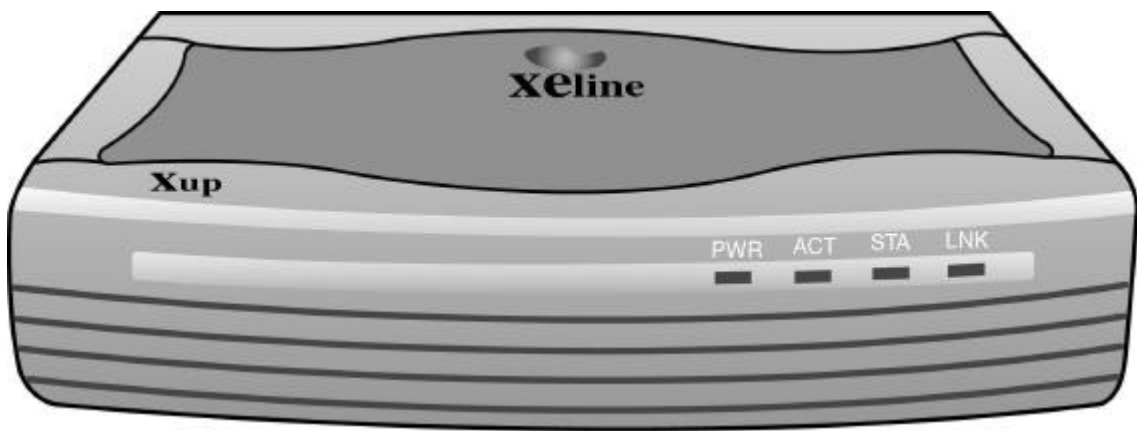


Xup XM100-01-U

User' s Manual



Xeline Co., Ltd.

Guide on User's Manual

Copyright 2001 by Xeline Co., Ltd. All Rights Reserved.

No part of this publication may be reproduced, transcribed, stored in a retrieval system, translated into any language, or transmitted in any form or by any means, electronic, mechanical, magnetic, optical, chemical, photocopying, manual, or otherwise, without prior written permission from Xeline Co., Ltd.

Please be aware that the product would be upgraded to enhance the features and performance without any prior notice. There could be slight difference on actual installation and operation of product from this User's manual.

Should you have any questions or comments on this User's manual, please communicate through "Contact us" menu at our web site www.xeline.com.

Technical Support Center

Address: 7F, Chungjin B/D., 475-22, Bangbae 2-dong, Seocho-ku, Seoul, Korea

Telephone: 822) 598-0980

Web Site: <http://www.xeline.com>

Trademarks

Xup XM100-01-U is a registered trademark of Xeline Co., Ltd.

Windows98/Windows NT is a registered trademark of Microsoft Corporation.

MS-Windows is a registered trademark of Microsoft Corporation.

General Notice: Other brand and product names used herein are for identification purposes only and may be trademarks of their respective owners.

Contents

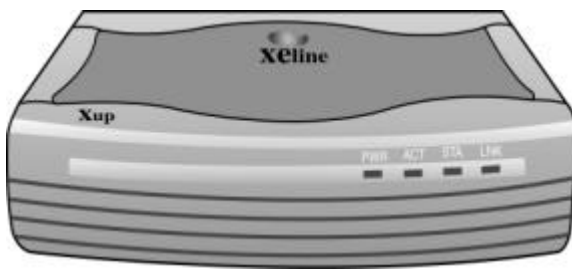
- 1. Product Introduction..... 4
 - 1.1 Product Characteristics 4
 - 1.2 Product Contents 4
 - 1.3 Product Details 5
 - Product Outfit 5
 - Specifications 6
- 2. Installation Guide 7
 - 2.1 Installation 7
 - Set up Xup XM100-01-U 7
 - Installation of Xup XM100-01-U Driver 8
 - TCP/IP setting 11
- 3. Useful Notes 15
 - 3.1 Useful notes 15
 - Cautions 15
 - Troubleshooting 16
 - Warranty 16

1. Product Introduction

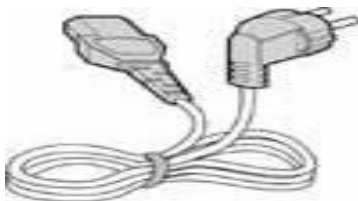
1.1 Product Characteristics

Xup XM100-01-U is enabling the data transmission over powerline. As powerline communications technology offers network by utilizing existing power lines at home or small office, therefore no additional cost is incurred for additional wiring. Xup brings networking solution with ease of installation and no special networking configuration work. It adds more convenience for PC with USB Interface as it does not require set up of LAN CARD.

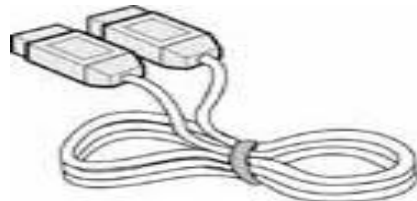
1.2 Product Contents



Xup XM100-01-U



Power Cable



USB Cable



User' s Manual

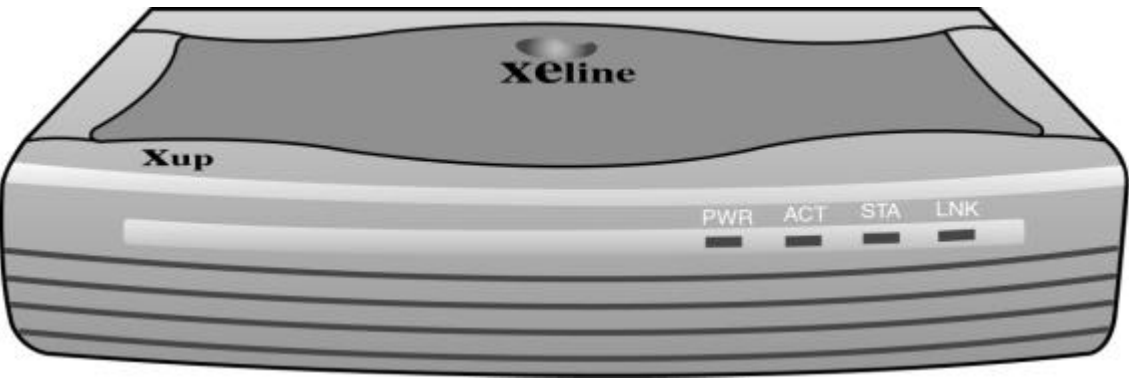


Driver Installation Diskette

1.3 Product Details

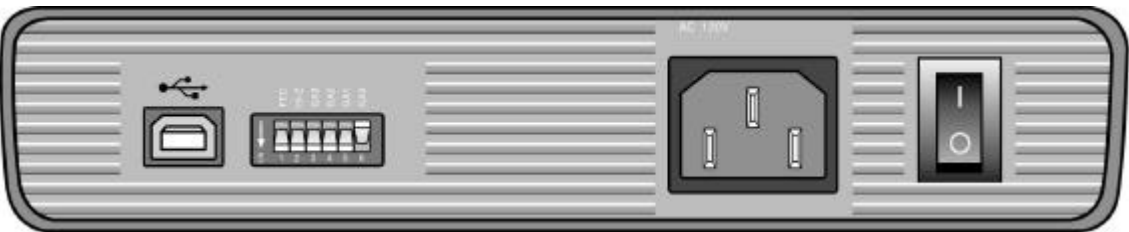
Product Outfit

Front



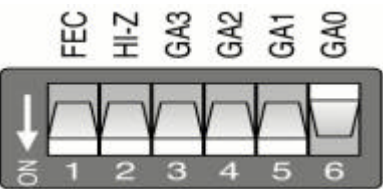
- | | |
|-----|--|
| PWR | Turned on when power is connected and power switch is on. |
| ACT | Blinks when communication is in normal operation. |
| STA | Turned on when power is connected, and initialization is properly completed. |
| LNK | Turned on when connection to PC is properly done. |

Rear



- | | |
|-----------------------|---|
| Power Inlet | Connection point to connect power cable. |
| Power switch | To turn on/off the Xup. |
| USB Interface | Interface between PC and Xup for communication. |
| Performance Selection | DIP Switch |

DIP Switch Configuration



FEC OFF/ON

Mode to stabilize the communications status and increase the reliability though possibly yield lower data rate.

(Set as "OFF" when shipped)

Hi-Z OFF/ON

Mode to improve the receptive sensitivity of Xup.

Set as "OFF" when the power line environment has many noise sources.

(Set as "ON" when shipped)

GA(Group Address)

To set up the address of Xup Products in communications.

All the Xup Products in communications should be configured with the same address.

(Set as "0001" when shipped)

Specifications

User PC Requirements

CPU	:Pentium 166MHz or above
MEMORY	:32Mbyte or above
VGA	:Resolution 640*480 ~1280*1024 (16Bit color or above)
OS	:Windows98/ Windows NT
USB Port	:One or more USB Ports

Specifications

	Specifications	Remarks
Data Rate	Up to 1Mbps	
Interface	USB	Connect to PC USB
Dimension	186 X 143 X 40 mm	(W X D X H)
Weight	750 g	
Power	AC120V, 60Hz	
Power Consumption	Max 15W or below	

2. Installation Guide

2.1 Installation

Set up Xup XM100-01-U

Turn off the power of PC.

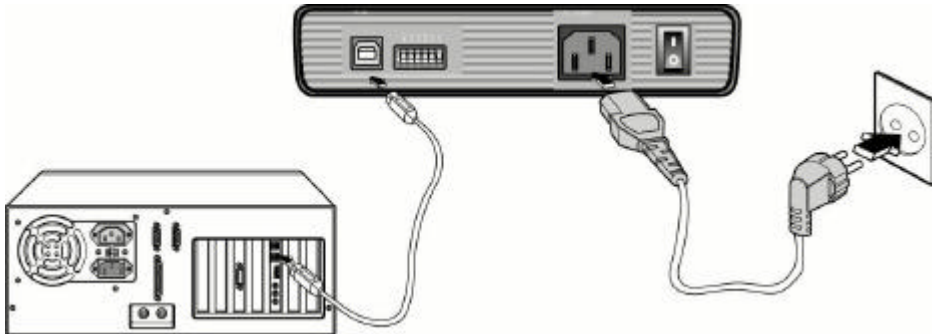
Ensure the PC has USB Port available.

Connect USB Cable to PC.

Connect Power Cable to Xup XM100-01-U.

Connect Xup XM100-01-U and PC with USB Cable.

Ensure all the connections made as figures below.



Installation of Xup XM100-01-U Driver

Turn on your PC and Xup XM100-01-U . Find the new device and display the **"ADMtek 10/100 USB MAC"** window to install the hardware device driver. (Based on Windows98)



Continue and click **[Next>]**.

The Add New Hardware Wizard will search for the driver. Click **[Next>]**.



Select **Search for the best driver for your device[Recommended]** and click **[Next>]**.



Specify the location to install the control device driver.

Select Floppy disk drives and click [Next>].



Find "**ADMtek AN986 USB 10/100 MAC**" from the floppy disk to bring up the above screen.

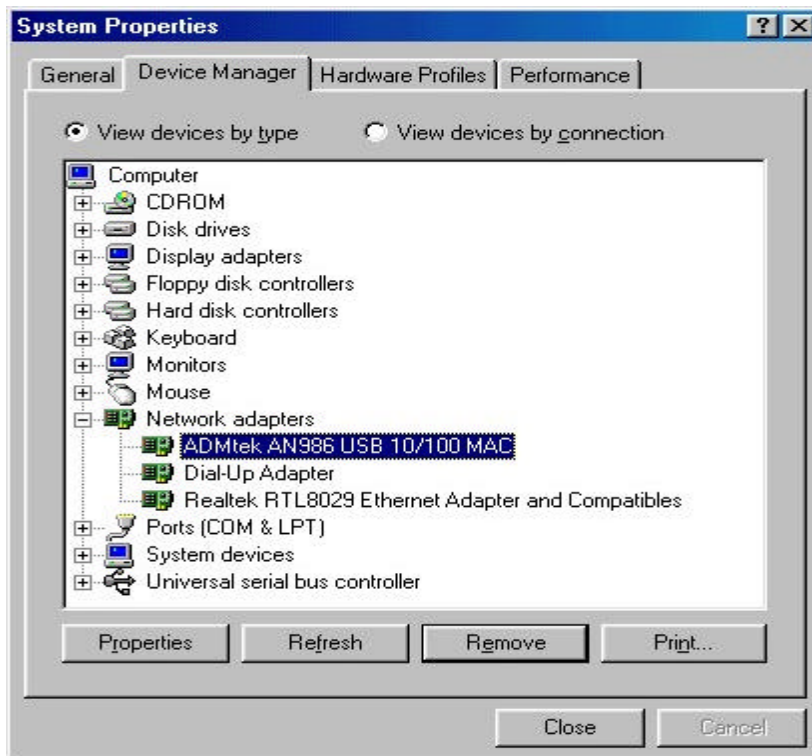
Continue and click [Next>].



When you click the [Next>] button, the software installation for the new "**ADMTek AN986 USB 10/100 MAC**" hardware will be finished.

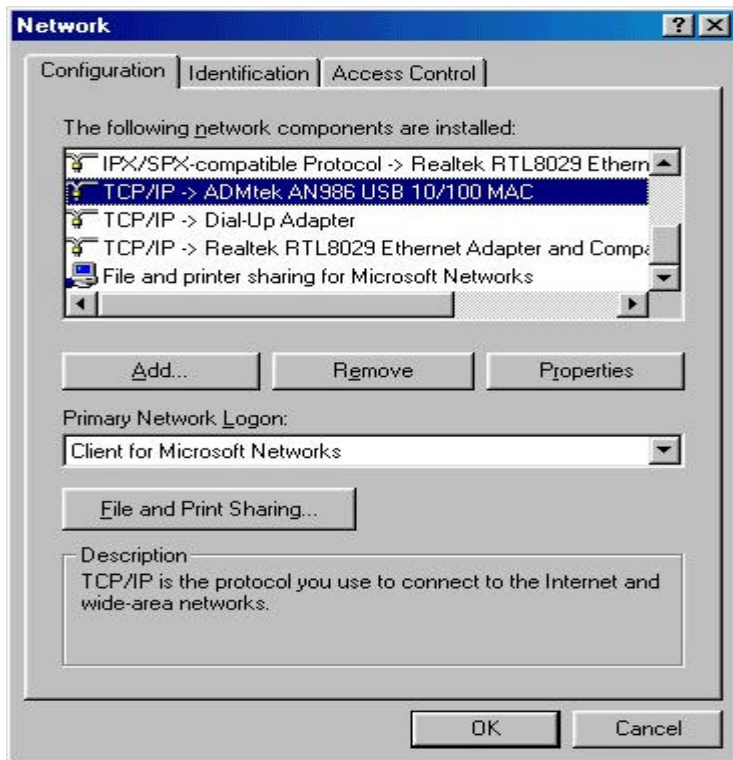
Click [Finish>] and complete the installation.

Installation of the Xup XM100-01-U driver is now finished. Once the hardware installation has been completed, click **Control Panel**→ **Device Manager**→ **Network Adapters** and check if it is set up to display "**ADMTek AN986 USB 10/100 MAC.**" If not, the installation process must be done over again from the beginning. If the driver has been properly installed, you will see the following screen.



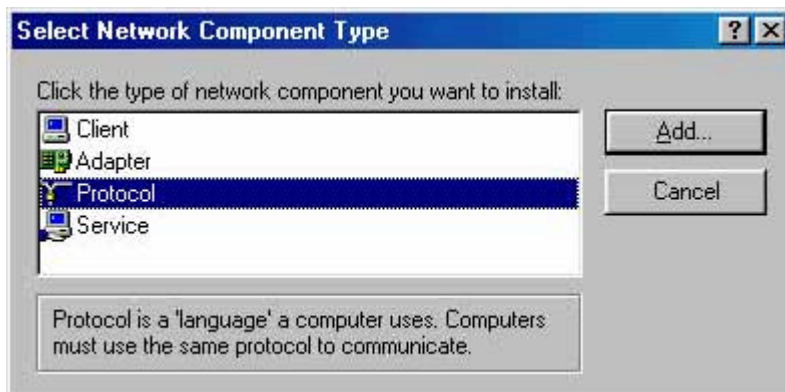
TCP/IP setting

Go to **Network Resources TCP/IP ADMtek AN 986 USB 10/100 MAC** and adjust TCP/IP Settings.

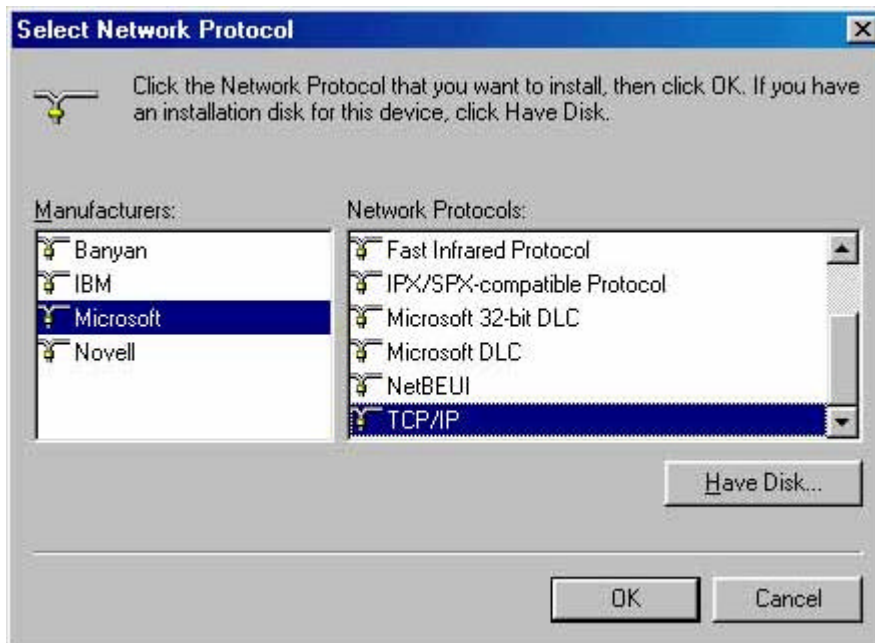


If “**TCP/IP ADMtek AN 986 USB 10/100 MAC**” is not shown in the network components, “TCP/IP PROTOCOL” should be added.

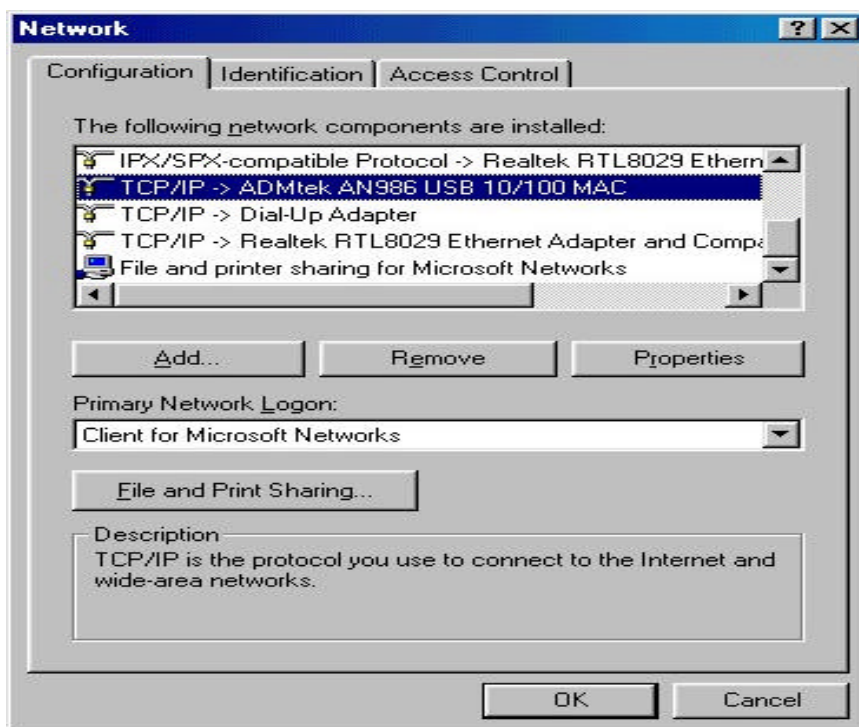
Click [Add...] button, then you will see the following screen.



Select [Protocol], then click [Add] button (A).



Select **[TCP/IP]** in right side, then click **[OK]** button.



Select **TCP/IP -> ADMtek AN986 USB 10/100 MAC**, and click **[Properties]** button.

:If you are setting Home networking or Internet sharing, set as follows:

In the following screen, select **[Specify an IP address]** and input IP address.

:IP address : 192.168.0.1

Subnet Mask: 255.255.255.0

The screenshot shows the 'TCP/IP Properties' dialog box with the 'IP Address' tab selected. The 'Obtain an IP address automatically' radio button is unselected, and the 'Specify an IP address' radio button is selected. Below this, the 'IP Address' field contains '192.168.0.1' and the 'Subnet Mask' field contains '255.255.255.0'. The 'OK' and 'Cancel' buttons are at the bottom right.

TCP/IP Properties

Bindings Advanced NetBIOS
DNS Configuration Gateway WINS Configuration IP Address

An IP address can be automatically assigned to this computer. If your network does not automatically assign IP addresses, ask your network administrator for an address, and then type it in the space below.

☐ Obtain an IP address automatically

☒ Specify an IP address:

IP Address: **192.168.0.1**

Subnet Mask: **255.255.255.0**

OK Cancel

In the following screen, input 192.168.0.1 at New Gateway, then click [Add] button.

The screenshot shows the 'TCP/IP Properties' dialog box with the 'Gateway' tab selected. The 'New gateway' field contains '192.168.0.1' and the 'Add' button is next to it. Below, the 'Installed gateways' list contains '192.168.0.1' and the 'Remove' button is next to it. The 'OK' and 'Cancel' buttons are at the bottom right.

TCP/IP Properties

Bindings Advanced NetBIOS
DNS Configuration Gateway WINS Configuration IP Address

The first gateway in the Installed Gateway list will be the default. The address order in the list will be the order in which these machines are used.

New gateway:

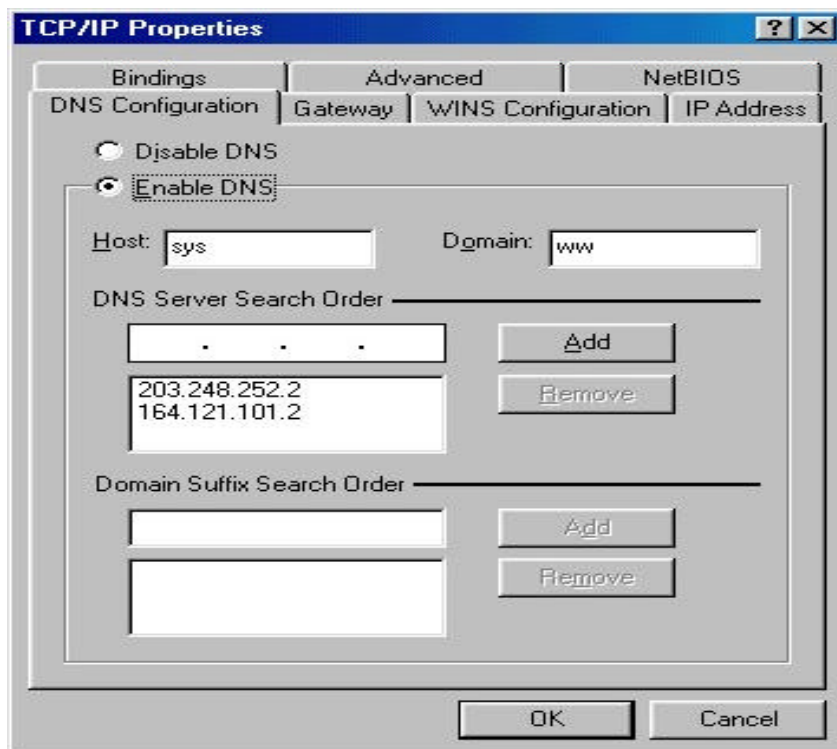
192.168.0.1 Add

Installed gateways:

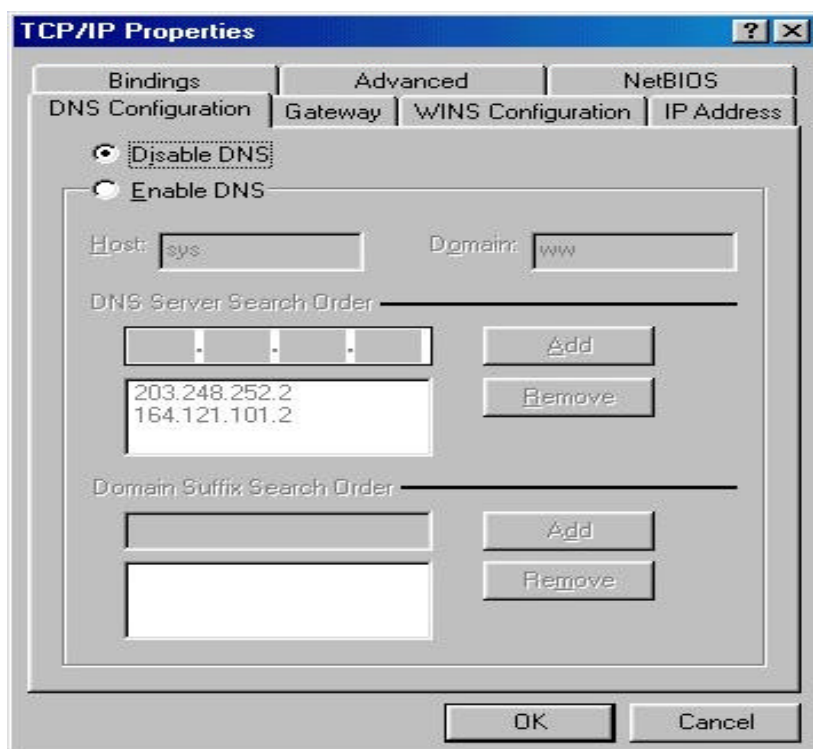
192.168.0.1 Remove

OK Cancel

When you use DNS already, keep the existing DNS as is.



If not, check on [Disable DNS].



For any PCs added with XUp products, set IP address as adding 1 to the last digit of the IP 192.168.0.1.(For example 192.168.0.2)

The set up for GATEWAY/DNS is the same.

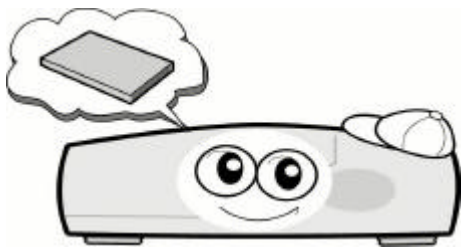
Operations

When PC is re-booted, all PC networking environment for users to enjoy the network communications over power line with Xup XM100-01-U is set.

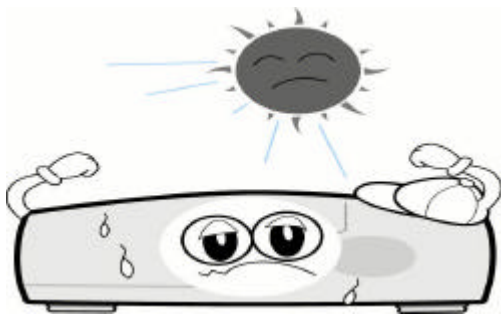
3 Useful Notes

3.1 Useful notes

Cautions

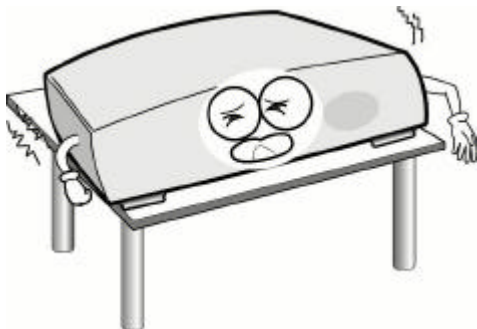


Read User's manual carefully before use.



Do not install in

- Highly humid environment
- Ill-ventilated place
- Under the direct lay
- Where temperature is too high or too low



Install in the even place.
Do not put anything heavy on Xup.

Troubleshooting

Warranty

If LED for Xup XM100-01-U is not on	*Check if the power cable is connected properly in rear
If networking is not working	*Check if LED is properly showing the status. *Check if USB cable in rear is properly connected. *Check the setting of DIP switch in rear. *Check if the driver of Xup XM100-01-U is installed in the PC.
Installation of driver	* If update for current driver is necessary, please down load the latest version available at www.xeline.com , and install it in the PC.

Certificate of Warranty

Model	Xup XM100-01-U
Date of Manufacturing	
Warranty Period	

Warranty Period

Xeline warrants that Xup XM100-01-U, if properly used and installed, will be free from defects in material and workmanship for a period of one (1) year after the date Xup XM100-01-U was purchased.

Only if the product is not altered or damaged and is properly installed, handled and used in accordance with the Product' s normal usage and Xeline' s printed instructions within the warranty period, Xeline will provide repair services at free of charge,

Xeline is not responsible for any repair, replacement or refund if: failure of the products resulted from accident, abuse, misapplication, alterations of the products, opening of the product case, a wiring scheme that does not comply with applicable legal codes, natural disaster, transportation after purchase, or operating other appliances with Xup.

The limited warranty for repair, replacement and refund of the Products will be comply with the Regulation on Indemnification of Consumer Losses set by Economy Planning Board.

If the wiring scheme at each household is not properly set, it would be possible to yield less effective data rate or non-communications status.

FCC Statement

Note: This equipment has been tested and found to comply with the limit for a Class B digital device, pursuant to part 15 of the FCC Rules. These limits are designed to provide reasonable protection against harmful interference in a residential Installation. This equipment generates, uses, and can radiate radio frequency energy and, if not installed and used in accordance with the instructions. If this equipment does cause harmful interference to radio communications. However, there is no guarantee that interference will not occur in a particular installation. IF this equipment does cause harmful interference to radio or television reception, which can be determined by turning the equipment off and on, the user is encourage to try to correct the interference by one or the following measures:

- Reorient or relocate the receiving antenna.
- Increase the separation between the equipment and receiver.
- Connect the equipment into an outlet on a circuit different from that to which the receiver is connected
- Consult the dealer or an experience radio TV technician for help

Change or modification not expressly approved by the party responsible for Compliance could void the user' s authority to operate the equipment