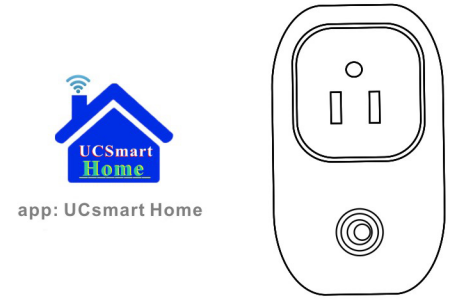


# User Manual WiFi Smart Outlet



(ii) Appointment  
Press the "Appointment" to set the plug when you want to turn off the power of it. You can change the hours and minutes and confirm your setting or Back to exit. (Figure 13)

(iii) Timer  
Press the "Timer" to set the Time schedule and click the "Add Timer" (Figure 14) to set the hours and minutes. You also can set the function to work in everyday for selection. (Figure 15) Then confirm the plug switch to On or Off. And click the "Confirm" to save the setting. (Figure 16-17)

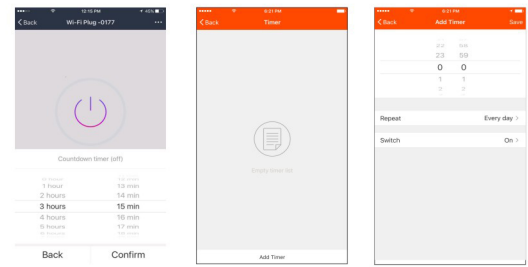
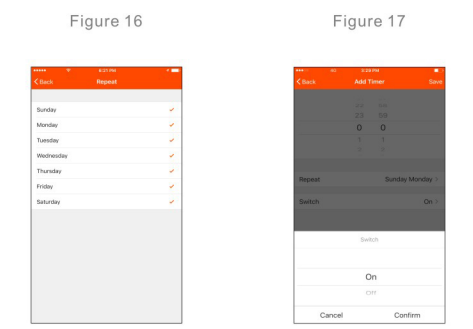


Figure 13 Figure 14 Figure 15  
7



(iv) Click the corner of Wi-Fi plug menu  
There are Modify Device Name  
Check for Firmware Update  
Remove device and  
Cancel item in it.  
You can change the device's name in Modify Device.  
Check the device firmware update or not.  
Remove the online device on APP in Remove device item and cancel the above setting by click the "Cancel". (Figure 18)

Figure 16 Figure 17  
8

### Part 3. Profile

Press "Profile" in Devices main menu. (Figure 19)  
There are Device Sharing  
Message Center  
FAQ  
Feedback and  
About  
in Profile. (Figure 20)

#### (1) Device Sharing

(i) Select "Device Sharing" in Profile, and press "Add Sharing" (Figure 21)

Figure 19 Figure 20  
9

(ii) Input the cell phone number who you want to share the device. Input the Nickname, relationship. You also can select the relationship in Dear, Dad, Mom, Son, Daughter, Friends and other. Click "Confirm" after selected. (Figure 22)

(iii) It will automatically to show the Devices Sharing list after click "Confirm". In the same country, you can share with your friends plurality of wireless devices. (Figure 23)

- (2) Message Center
- (3) FAQ
- (4) Feedbacks
- (5) About

Figure 22 Figure 23  
10

FCC Statement  
This equipment has been tested and found to comply with the limits for a Class B digital device, pursuant to Part 15 of the FCC Rules. These limits are designed to provide reasonable protection against harmful interference in a residential installation. This equipment generates uses and can radiate radio frequency energy and, if not installed and used in accordance with the instructions, may cause harmful interference to radio communications. However, there is no guarantee that interference will not occur in a particular installation. If this equipment does cause harmful interference to radio or television reception, which can be determined by turning the equipment off and on, the user is encouraged to try to correct the interference by one or more of the following measures:  
-- Reorient or relocate the receiving antenna.  
-- Increase the separation between the equipment and receiver.  
-- Connect the equipment into an outlet on a circuit different from that to which the receiver is connected.  
-- Consult the dealer or an experienced radio/TV technician for help.

This device complies with part 15 of the FCC Rules. Operation is subject to the following two conditions:

- (1) This device may not cause harmful interference, and
  - (2) this device must accept any interference received, including interference that may cause undesired operation.
- Changes or modifications not expressly approved by the party responsible for compliance could void the user's authority to operate the equipment.

The distance between user and products should be no less than 20cm

11

## Ucsmart Home WiFi Smart Plug (SM-PW701U)

The WiFi Plug is combined the APP with WiFi technology to make it intelligently implement local or remote power-control function.  
Can local or remote turn ON / OFF the device  
Free App for Android and IOS.  
The Smart Power Plug could be controlled by Android & ISO smart phones and tablets via Wi-Fi, telecom mobile network, or internet. You could make the electronic power-control at Anytime and anywhere, to save you time.  
Has Timer function and Overload protection function.  
Support Remote control, Power metering and AP (Access point) mode.  
With elegant design, Unique knowhow, and Quick setup, Max 3500W load, Security.

Applications: Smart home control, Offices, factories, residential intelligent control, etc.

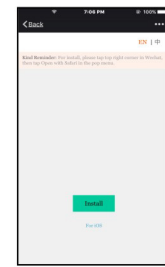
Specifications  
Wireless Standard: IEEE 802.11b/g/n  
Interface: US standard (With Standard US output Plug, and Standard US input plug)  
Operation Frequency: ISM band, 2412-2462MHz  
Security: WPA-PSK, WPA2-PSK, WEP, TKIP

### Part 1. Registration

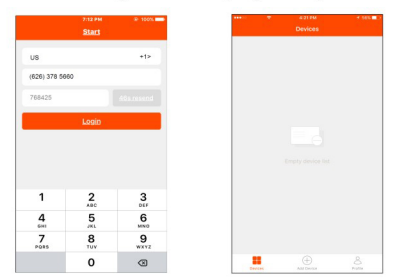
(1) Download and Install the APP Ucsmart Home in your smart phone. you can download and install the APP from Google Play Store and Apple Store into your smart phone; Or scan the following QR code and download the APP; Install the APP into smart phone. Before log in the APP you should have a registration;



(2) Click the Install icon under APP download into the smart phone (Figure 1). Double click the Ucsmart Home APP to running after APP successfully installation in your smart phone.



(3) The system will ask you to have a registration after the APP running. Select the country area where you're location from and input your cell phone number after select your country area. Press the "Registrant code" area, you'll get the code from your cell phone. Input the code in the "Registrant code" area received from your cell phone and press Login. Then you have a successful registration. (Figure 2)



### Part 2. Add Device

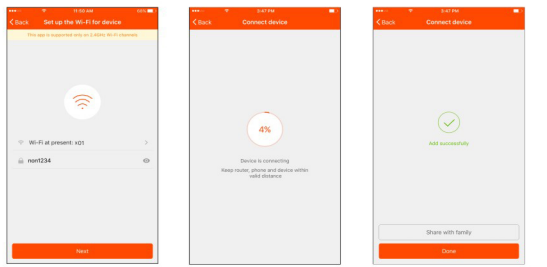
(1) Quickly Network Distribution

(i) Make sure the device is waiting for connection state, if not, reset the plug as follows;

Keep to press On/Off button 5 seconds, the indicator light flashes quickly (approximately 3 times / sec), that means reset successful, it running under quickly connection mode. Press Instructor light is quickly flashing. (Figure 3)

(ii) Open the APP, click on the [Add Device], select the internet login Wi-Fi for plug (usually the Wi-Fi is for home used.), input the password of Wi-Fi in the frame, click Next to start to connect the plug. (Note: The plug only supports 2.4G Wi-Fi network)

(iii) The device will display a successful connection success prompted interface, click ok, return to the device list interface. Then you can start to operate the APP. (Figure 4-6)

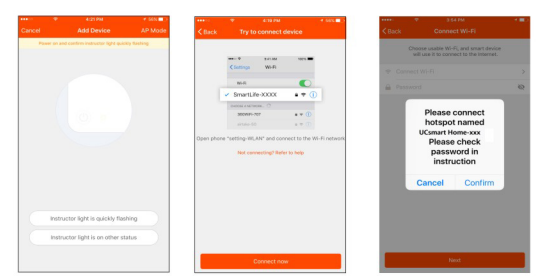


(2) Hotspot Mode to distribute network

(i) Click the "Hotspot mode" at the bottom of APP into the hotspot mode setting;

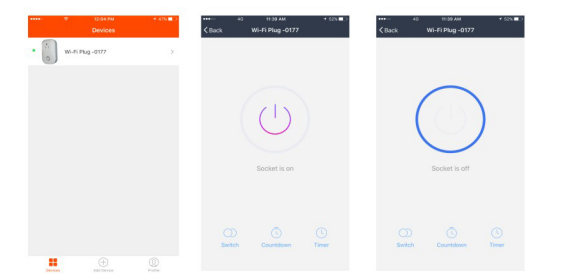
(ii) Reset the device to hotspot mode: keep press the On/Off button for 5 seconds during the indicator fast flash, that means the plug already into the hotspot mode while indicator flash slowly (approximately 1.5 second/time); (Figure 7)

(iii) Connect to device hotspot: Click "Connect" (or open the phone settings - wireless local area network), the connection name is "SmartLife-XXXX" hot spots (generally you can connect it directly, the password is 888888888 if the system need to input the password), then return to APP. The APP began to connect to the device. (Figure 8-9)



(3) How to Turn On/Off the plug

Click the "UCSmart Home" in Devices main menu. (Figure 10)  
You can come into the Smart Wi-Fi Plug and press the button of plug to turn on the power plug On or Off. (Figure 11 and 12)



(4) Setting in plug

(i) Switch On/Off the plug  
There are Switch, Appointment and Timer in plug setting. (Figure 10, 11 & 12)  
You can control the plug On/Off by click the Switch or directly to press the On/Off icon on