

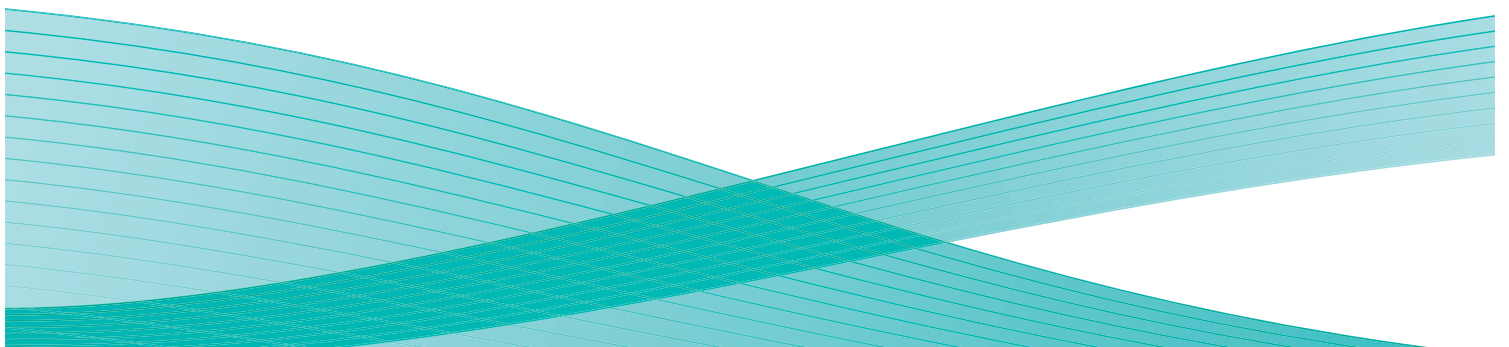
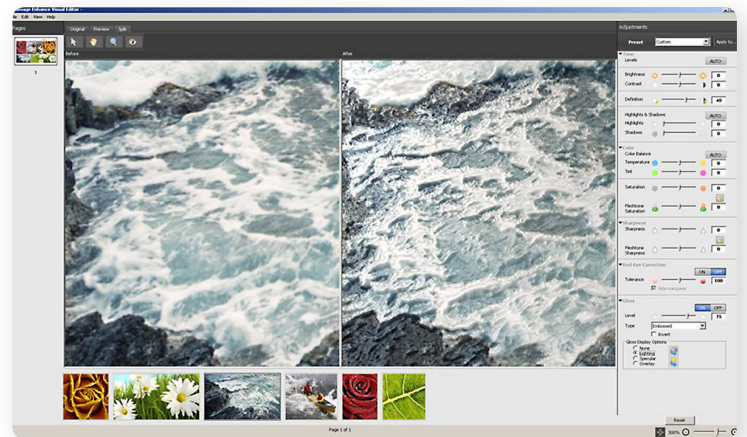
Xerox® Multi-Pass Clear Dry Ink for EFI® Fiery® Print Server

Multiply the power and value of Clear Dry Ink on your applications in an efficient, simplified workflow process.

Xerox® Multi-Pass Clear Dry Ink takes the stunning visual effects and outstanding value of Clear Dry Ink to the next level utilizing the power of your EFI Fiery Print Server.

Using the Fiery server's intuitive Fiery Image Enhance Visual Editor (IEVE) tool, users can now add up to seven layers of Clear Dry Ink to an application in an efficient, simplified workflow.

Exclusive to EFI Fiery print servers, this powerful new feature allows you to magnify the dramatic dimensional effects of Clear Dry Ink in ways you never imagined.



Powered by the Fiery® Image Enhance Visual Editor (IEVE), Multi-Pass Clear Dry Ink application is as easy as 1–2–3.

Key Benefits of Xerox® Multi-Pass Clear Dry Ink

Add more value—Creating dimensional effects with up to seven layers of Clear Dry Ink will help your customers command attention in new and creative ways that generate sales and increase ROI.

Real world applications—Multi-Pass Clear Dry Ink can be a valuable and cost-effective way to increase the success of everyday applications such as photo books, greeting cards, invitations and direct marketing materials using Multi-Pass Clear Dry Ink.

Simplified workflow—The Fiery® server's simple to use, fully integrated, interactive IEVE tool allows easy control of Multi-Pass Clear Dry Ink applications while adjusting image colors in a job—all without the need to open the file in the originating application or an additional computer.

Fiery Image Enhance Visual Editor (IEVE) is an easy, interactive, Command WorkStation® plug-in tool for adjusting image colors in a job without the need to open the file in the originating application. IEVE provides real-time image editing with visual feedback and eliminates the need for additional image editing software. Image Enhance Visual Editor works with both PostScript and PDF files. Now, with the addition of Multi-Pass Clear Dry Ink, IEVE works even harder, giving users command over the application of up to seven layers of Clear Dry Ink with a tool that's simple to use. The tool's "wizard" has also been improved, offering users valuable tips and technical support throughout the work process.

Easy, Economical, Multi-Pass Clear Dry Ink



1. You can use any existing document. Simply import the file into the Fiery.



2. Using Image Enhance Visual Editor, select images from the design and apply Multi-Pass CDI.



3. Follow the simple instructions on the Fiery to print up to seven passes of Clear Dry Ink.

Advantages of Using Fiery Image Enhance Visual Editor

IEVE addresses the widest range of images and jobs by supporting RGB and CMYK color sources and the most commonly used file formats. This makes it the most complete toolset of this type in today's market.

IEVE can be used to improve image quality in many types of applications such as office documents, photo books and professional publishing layouts.

Fiery technology assembles mosaic images from Microsoft® applications to ensure that image enhancements is applied coherently to the image as it was conceived by the author and not to computer generated mosaic tiles.

IEVE Customer Benefits

- Increased revenues for service providers by offering image correction services.
- Reduced turnaround times because operators do not need to return to the originating software application to correct images.
- Apply changes to one or many images in a job.
- Cost-savings—service providers do not need expensive image retouching and layout software at every workstation.
- Apply spot colors and clear layer (up to seven passes of Clear Dry Ink).
- Customers are more satisfied.

For more information on Clear Dry Ink and EFI Fiery Print Server, call 1-800-ASK-XEROX or visit us at www.xerox.com

