

WorkCentre® 7346 Evaluator Guide



ABOUT THIS GUIDE

This guide will introduce you to the Xerox WorkCentre® 7346 color multifunction printer, and aid you in your evaluation process.

CONTENTS

Section 1 — Introducing the WorkCentre 7346 Color Multifunction Printer

Product Overview	1
Specifications	2

Section 2 — Evaluating Color Multifunction Printers

Overview	4
Evaluate Productivity	5
Evaluate Installation and Deployment	6
Evaluate Ease of Use and Management	7
Evaluate Reliability	8
Evaluate Versatility	9
Evaluate Security Capabilities	14
Evaluate Cost Control	15

Section 3 — Configurations, Specifications, Supplies, Support and Additional Information Sources

Configuration Summary	17
Specifications	18
Supplies and Options	19
Support and Additional Information Sources	20



SECTION 1

Introducing the WorkCentre 7346 Color Multifunction Printer

PRODUCT OVERVIEW

With the WorkCentre 7346 multifunction printer, Xerox makes it easier to benefit from a high-performance black-and-white MFP, plus all the competitive advantages of cost-effective color when you need them.

Unleash your office performance

Fast, powerful and engineered to easily perform multiple tasks for workgroups of any size, the WorkCentre 7346 multifunction printer boosts productivity and delivers spectacular results.

- Print and copy speeds up to 45 ppm black-and-white and 40 ppm color, with overall productivity that makes fast work of your office application workloads.
- Xerox multitasking network controller handles multiple tasks concurrently, enabling you to program jobs while others print and minimizing employee delays at the front panel.
- The 50-image-per-minute (ipm) black-and-white and 45 ipm color duplex automatic document feeder (DADF) quickly processes single- or double-sided originals when copying, scanning and faxing.
- A large, color touch-screen interface eases print job programming: Common features are prominently displayed, and users have intuitive access to more advanced features.
- The WorkCentre 7346 multifunction printer is always ready with a fast warm-up time and a quick first-page-out time.

The control you want and need

The WorkCentre 7346 multifunction printer gives you complete control everywhere you need it: IT managers get tools to manage devices and user access; employees get tools to program and execute copy, print, scan and fax jobs.

- Deploy color responsibly with tools that manage user access to color printing and copying features, track color use and cost to the levels of detail you require, and integrate with accounting solutions to assign and bill print-and-copy costs.
- Produce impressive and professional-looking color documents with the WorkCentre 7346 multifunction printer, which utilizes a set of advanced imaging technologies to deliver vibrant and consistent output.
- A set of Xerox tools, and integration with network management applications from other vendors, makes the WorkCentre 7346 multifunction printer easy to manage for your IT staff.

Scalable business solutions

The WorkCentre 7346 multifunction printer is designed to fit the unique needs of your office, with multiple configuration options, simple interface customization, and integration with network applications and workflows.

- Tailor the WorkCentre 7346 multifunction printer to your needs with optional fax and scan functionality, and multiple paper input and finishing options.
- Customize the user interface of your WorkCentre 7346 multifunction printer by integrating network applications that deliver a variety of advanced capabilities and authorization solutions.
- Use your WorkCentre 7346 multifunction printer as a digital on-ramp for your hard-copy documents, and integrate with network workflow applications that automate tasks such as expense report creation, document routing and more.
- An optional EFI Fiery Network Controller provides additional color management controls, productivity features and workflow tools.

WORKCENTRE 7346 SPECIFICATIONS



STANDARD FEATURES

The WorkCentre 7346 multifunction printer delivers standard black-and-white and color copying and network printing.

Copy and Print Features

- Output Speed — Up to 45 ppm black-and-white, 40 ppm color
- First-Page-Out Time — As fast as 4.8 seconds black-and-white, 6.7 seconds color
- Resolution — Up to 600 x 600 dpi (copy), up to 1200 x 1200 dpi (print)
- Copy Feature Highlights — Automatic two-sided output, ID Card Copy, Annotation, Build job, Automatic booklet creation, Covers insertion, Sample set, Automatic color selection, Watermarks
- Print Feature Highlights — Automatic two-sided output, Secure print, Delay print, Sample set, Booklet creation, Watermark, Annotation

Controller

- Processor — 667 MHz
- Memory — 1.5 GB
- Hard Drive — 40 GB (minimum)
- Connectivity — 10/100Base-TX Ethernet, optional USB 2.0, 10Base2, 10Base5, Wireless Ethernet 802.11b (via third party adapters)
- PDL Support — Adobe® PostScript® 3™, XPS®, PCL® 5c and PCL 6 emulations, HP-GL2™

Paper Handling

- Document Handling — 75-sheet duplex automatic document feeder (DADF)
- Paper Input — Customer chooses:
 - Three-Tray Module: 2,180 sheets
 - High-Capacity Tandem Tray: 3,140 sheets
- Paper Output — 400-sheet offsetting center catch tray (200-sheet capacity with any finisher option)

Reliability

- Duty Cycle — 150,000 images per month
- Warranty — Xerox Total Satisfaction Guarantee



OPTIONAL FEATURES

Choose among these options to upgrade your WorkCentre 7346 multifunction printer into an advanced MFP.

Fax Features

- Fax Speed — 33.6 Kbps fax modem
- Compression —
 - Phone-line fax: MH, MR, MMR, G3
 - Internet/Network server fax: PDF, Multipage TIFF, Image-only PDF with G3 MH/G4 MMR/JPEG compression, TIFF-FX with G3 MH/JPEG compression
- Features — Walkup fax (one- and three-line options), Internet fax, LAN fax, Network server fax (optional), Fax forward to email/FTP/SMB, Two-sided send and receive, Print on fax up to 11 x 17 in. (A3)

Scan Features

- Scan Speed — 50 ipm black-and-white, 45 ipm color (with DADF)
- Resolution — Up to 600 x 600 dpi
- File formats — PDF, Searchable PDF, JPEG, TIFF, Multipage TIFF, and XPS®
- Destinations — Scan to Email, Scan to mailbox, Scan to PC, Scan to home, Network scanning

Finishing Options

- Office Finisher —
 - 1,000-sheet stacking
 - 50-sheet multiposition stapling
- Advanced Office Finisher —
 - 3,500-sheet stacking plus 500-sheet top tray
 - 50-sheet multiposition stapling
 - 2- or 3-hole punch
- Professional Finisher —
 - 1,500-sheet stacking plus 500-sheet top tray and booklet tray
 - 50-sheet multiposition stapling
 - 2- or 3-hole punch
 - Up to 15-sheet saddle-stitch booklet making
 - Up to 5-sheet V-folding

Color Server

- EFI Fiery System 8e Network Controller

Section 2

Evaluating Color Multifunction Printers

OVERVIEW

Xerox invented laser printing, Ethernet networking, and the first digital MFP — we've invested years of research and development in designing the most productive office solutions in the industry. This experience has positioned Xerox as the recognized leader in office MFP design and performance. Based on our in-depth understanding of customer requirements in the office, Xerox recommends that you consider the following criteria in your evaluation process of departmental-class copier/printers.

- ✓ **Productivity**
Can it keep up with the demands of your daily and monthly workloads?
- ✓ **Installation and Deployment**
How does the MFP ease the demands of the deployment process?
- ✓ **Ease of Use and Management**
Does the MFP include tools and features to lighten the load for your IT staff?
- ✓ **Reliability**
Is the MFP robust enough to meet your needs and backed by quality service?
- ✓ **Versatility**
Can the MFP be customized to meet your specific needs?
- ✓ **Security**
Does the MFP help keep your confidential information private?
- ✓ **Cost Control**
Can you monitor and control your organization's cost of printing?

MFPs often look the same from the outside. Judging from a quick glance at features and performance specifications, you might conclude that MFPs are largely equal. This section of the Evaluator Guide suggests ways you can more thoroughly evaluate MFPs — you'll soon learn that the WorkCentre 7346 multifunction printer will exceed all your requirements.



EVALUATE PRODUCTIVITY

In addition to actual print engine speed, consider the things that affect overall throughput. Are the scanning and faxing features **powerful enough** to support your busy departments? What is the **warm-up wait time**? Is the device appropriately sized for the **entire workgroup**? Can features be used at the **same time**, or are employees forced to wait for the device to become “free”? Is the system designed to **minimize network traffic**? Can you **monitor the device functions** from your desktop and/or at the device?

THE XEROX
ADVANTAGE

HOW THE WORKCENTRE 7346 MFP EXCEEDS THE PRODUCTIVITY REQUIREMENT:

PRODUCTIVITY

The productivity of the WorkCentre 7346 multifunction printer delivers output speeds of up to 45 ppm black-and-white/40 ppm color. Document scanning speed is notable as well, with a 75-sheet duplex automatic document feeder (DADF) that scans single- and double-sided documents at 50 ipm black-and-white and 45 ipm color. With a black-and-white first-page-out time as fast as 4.8 seconds and a color first-page-out time as fast as 6.7 seconds, you won't have to wait long for your copy jobs either. The WorkCentre 7346 multifunction printer also features fast warm-up times of 30 seconds from low power mode and 45 seconds from cold start.

NETWORK PERFORMANCE

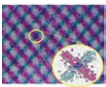
Performance isn't limited to raw document feeds and speeds. The WorkCentre 7346 multifunction printer's network controller utilizes a 667 MHz processor with 1.5 GB of memory and a minimum 40 GB hard drive standard — it's ready and able to process your large, complex print and scan jobs. In addition, 10/100Base-TX Ethernet connectivity comes standard for shared network printing, and optional adapters for 10Base2, 10Base5, 802.11b wireless Ethernet, and USB ensure you can connect the WorkCentre 7346 multifunction printer to your company's specific needs.

The WorkCentre 7346 multifunction printer is easy on your network as well. With RAM collation, files are sent over the network just once no matter how many sets are printed. Job pipelining allows the MFP to process print jobs even if the print engine is busy with an earlier print job — thus optimizing system performance by avoiding delays during job processing.

IMAGE QUALITY

With 600 x 600 dpi copy resolution and 1200 x 1200 dpi print resolution, the WorkCentre 7346 multifunction printer generates high-quality copies and prints with crisp text and images. The WorkCentre 7346 multifunction printer utilizes a number of advanced imaging technologies to deliver fast, reliable, high-quality output, including:

Traditional toner particles



Chemically grown EA-HG toner



- Xerox Emulsion Aggregate (EA) toner — this chemically grown toner technology features smaller, more uniformly sized particles for excellent shadow detail, vibrant colors, consistent color accuracy, and crisp fine-line detail.
- Trickle Charge Development — a Xerox-exclusive technology that maintains print consistency throughout the workday by feeding a mixture of developer and toner to the print engine, helping avoid eleventh-hour print-quality issues.
- Intermediate Belt Transfer with Micro Tandem Engine — provides the speed and efficiency of single-pass color with consistent image transfers, fewer paper jams, and increased uptime.
- Belt Nip Fusing — instead of conventional roller-to-roller contact, Belt Nip Fusing uses a flexible surface contact area that allows toner to better adhere to the media, delivering improved image transfer and registration.

Xerox also delivers multiple page description languages (PDLs) to ensure your printed output meets your high expectations, with Adobe® PostScript® 3™, XPS®, emulations for PCL® 5c, PCL 6 and HP-GL2™.

EVALUATE PRODUCTIVITY (CONTINUED)

CONCURRENCY

The WorkCentre 7346 multifunction printer's network controller also helps avoid bottlenecks at the front panel. Concurrent operation means you won't have to wait until a long print job is complete to program a fax, scan or copy job. By keeping the front panel available for programming while the print engine is busy, your employees can stay productive and avoid idle time waiting for the MFP. Scan and fax jobs can be programmed and executed without waiting for the print engine to become available, while newly programmed copy jobs will join the job queue and be executed when earlier jobs are completed.

MONITORING SYSTEM STATUS

With the WorkCentre 7346 multifunction printer, up-to-date information on every job you process—print, copy, scan, email or fax, plus in-depth device information—is always at your fingertips. Whether at the device or from your desktop, you can manage documents and jobs through an integrated job queue with a few mouse-clicks or button pushes.

EVALUATE INSTALLATION AND DEPLOYMENT

Installing and deploying a fleet of copier/printers and multifunction printers throughout your organization is a potentially time-consuming, complicated process. This is not limited to physically placing the units in your environment; it is really about how these systems will integrate into your **existing network infrastructure**. You also need to consider the process required to **deploy printing and scanning services** to your users, and how automated that process can be.

THE XEROX
ADVANTAGE

HOW THE WORKCENTRE 7346 MFP EXCEEDS THE INSTALLATION AND DEPLOYMENT REQUIREMENTS:

INSTALLATION

When you choose Xerox, you can rest assured that your equipment will be delivered and installed to your specifications and expectations. All network-enabled configurations include a 10/100Base-TX Ethernet connection with features including automatic IP addressing, device naming, and Ethernet speed sensing to provide simple and automatic network installation. Management and system setup can be accomplished through a variety of means, including easy, wizard-based processes found within Xerox CentreWare® Web. Features like cloning enable multiple-device installation onto networks with identical settings, eliminating the need to set up each system individually.

DEPLOYMENT

Another critical area to evaluate is how to deploy print and scan drivers to your employees' computers. Print and scan drivers can be deployed centrally, so your IT staff needn't perform desk-to-desk manual installation of the driver software. Again, CentreWare Web wizards are provided to aid in the process of installing, troubleshooting and upgrading print and scan drivers for your employees, freeing up your IT staff for more pressing projects. Driver support is delivered for Windows (Server 2003 / XP / Vista), including most operating systems with 32- and 64-bit drivers, Macintosh OS (10.3 and above), and multiple UNIX and Linux platforms.

EVALUATE EASE OF USE AND MANAGEMENT

Look for **fully integrated functions** that work together to create more value than the sum of their parts. Are the functions **easy to learn**? Is the user interface **consistent** from function to function? Do the network features give you full access to the power of your network? Does the device include **additional software** to take full advantage of your digital documents? Is the device easy for your IT organization to **manage as part of its infrastructure**?

THE XEROX
ADVANTAGE

HOW THE WORKCENTRE 7346 MFP EXCEEDS THE EASE-OF-USE REQUIREMENT:

FRONT PANEL USER INTERFACE

It doesn't matter if your job is simple or complex — the front panel user interface (UI) is easy to learn and offers quick job programming. The WorkCentre 7346 multifunction printer utilizes an 8.1-inch color touch-screen UI that enables total control of copy, scan and fax functions. The touch-screen UI is intuitively organized, with the most commonly accessed features on the default screen and tab-based access to advanced programming features. A selection of buttons accompanies the touch-panel UI for inputting and numbers, accessing management features, and executing jobs (with the familiar green Start button). Third-party applications can be integrated with the front panel UI as well (for more information, see Extensible Interface Platform on page 13). Whether you've used a Xerox copier/printer or multifunction printer in the past or not, you will find the WorkCentre 7346 multifunction printer a pleasure to use.



BIDIRECTIONAL DRIVERS

The WorkCentre 7346 multifunction printer utilizes CentreWare print drivers to provide an easy, intuitive way to program jobs and get updated system status information. Like the front-panel touch-screen UI, the print drivers are intuitively organized by tabs. The most commonly used features are located on the default tab, with advanced features easily accessible when programming more complex jobs. The print drivers also provide bidirectional information like system status, job status, currently loaded paper sizes, installed options and more.

THE XEROX
ADVANTAGE

HOW THE WORKCENTRE 7346 MFP EXCEEDS THE EASE-OF-MANAGEMENT REQUIREMENT:

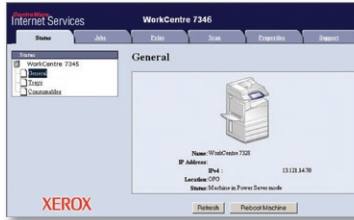
NETWORK MANAGEMENT

It couldn't be easier for the network administrator: The WorkCentre 7346 multifunction printer integrates into virtually any network environment. Network configuration is made simple with CentreWare Web configuration wizards, which eliminates the need for your IT staff to perform tasks at the front panel of each device on your network. The WorkCentre 7346 multifunction printer includes support for multiple native network environments, including TCP/IP, IPv4/IPv6, SNMP, SMB, Novel IPX, AppleTalk and IPP.

XEROX CENTREWARE SOFTWARE

Xerox CentreWare Web (CWW) software is a powerful device-management solution for IT departments. CWW is free software that eases the chore of installing, configuration, managing, monitoring and pulling reports from the networked printers and multifunction printers throughout your enterprise — regardless of vendor. Xerox also addresses enterprise asset management through compatibility with network management tools for Sun, Novell, Microsoft and other environments.

EVALUATE EASE OF USE AND MANAGEMENT (CONTINUED)



XEROX CENTREWARE SOFTWARE (CONTINUED)

The WorkCentre 7346 multifunction printer also includes CentreWare Internet Services (CWIS), an embedded web server that allows employees and IT personnel to perform detailed status checks on the system and consumables, administer system settings, and manage access and accounting controls via any standard web browser.

AUTOMATED DEVICE OWNERSHIP

Xerox offers Smart eSolutions, an application for automating and simplifying device management and ownership. The two Smart eSolutions applications, MeterAssistant and SuppliesAssistant, automate the process of reporting MFP usage data to Xerox and ordering replacement supplies when toner levels run low.

- MeterAssistant™ — automatically collects and securely submits your device meter reads to Xerox using a built-in audit process to increase billing accuracy
- SuppliesAssistant™ — proactively manages toner supplies and monitors usage to ensure you have the right supplies at the right time

XEROX OFFICE SERVICES

Lastly, Xerox offers a set of services for managing document output and asset infrastructure in offices. These services deliver measurable business results by leveraging a powerful set of office technologies, business processes, methodologies and software tools to reduce costs and improve productivity. These offerings are summarized in Section 3 of this guide.

EVALUATE RELIABILITY

Office productivity relies on tools that do their jobs day in and day out. Consider how often you need to intervene to **replace paper or other consumables** or to **clear jams**. How **easy is that intervention**, and how **long is the device typically down**? If outside assistance is required, how **easy is it to arrange** and how long do you have to wait? Is the device a **reliable network citizen**? Has it been **tested and certified** by independent industry participants?

THE XEROX
ADVANTAGE

HOW THE WORKCENTRE 7346 MFP EXCEEDS THE RELIABILITY REQUIREMENT:

DAY-TO-DAY RELIABILITY

Reliability comes in two forms: system reliability and image reliability. The WorkCentre 7346 multifunction printer has been designed to provide maximum system reliability and uptime: Simple paper paths and a minimum of moving parts help optimize day-to-day reliability and contribute to a monthly duty cycle of up to 150,000 pages. Any paper jams or misfeeds are cleared through access doors on the front of the machine, enabling your employees to proactively resolve most issues and limit calls to your help desk. The WorkCentre 7346 multifunction printer also minimizes user interventions for loading paper — it has maximum capacities of 2,180 sheets or 3,140 sheets. Xerox SMart Kit™ technology also helps minimize downtime by predicting when critical parts will fail and alerting you to order replacement units. SMart Kit replaceable units are as simple and easy to replace as toner cartridges. Furthermore, if a WorkCentre 7346 multifunction printer MFP does experience an interruption in service, CentreWare alerts can be configured to inform IT staff.

EVALUATE RELIABILITY (CONTINUED)

DAY-TO-DAY RELIABILITY (CONTINUED)

Image reliability is boosted by advanced technologies such as Belt Nip Fusing, Trickle Charge Development, and Intermediate Belt Transfer with Micro Tandem Engine. Each technology contributes to reliable toner transfer to media, long-term image quality, and image registration.

SERVICE/SUPPORT

Building on the reliability engineered into the WorkCentre 7346 multifunction printer, Xerox has trained and developed a sophisticated service-delivery network capable of maintaining your equipment, addressing issues you encounter, and training your IT staff and employees on how to get the most out of your Xerox equipment.

EVALUATE VERSATILITY

How many **functions** can the device perform? Does the system support the **media types and capacity** your employees require? Does the copier/printer offer the kinds of **finishing options** that can help your employees get their jobs done more efficiently?

THE XEROX
ADVANTAGE

HOW THE WORKCENTRE 7346 MFP EXCEEDS THE VERSATILITY REQUIREMENT:

COPY FEATURES

The WorkCentre 7346 multifunction printer is a reliable, workgroup-class digital MFP capable of supporting the daily copying volumes of your busy employees. Black-and-white output speeds up to 45 ppm and color output speeds up to 40 ppm give you MFP performance for your monthly copy volumes. The 75-page DADF scans two-sided originals in a single pass at speeds up to 50 ipm black-and-white and 45 ipm color, quickly processing even the longest copy jobs.

A rich set of copy features enables your employees to create ready-to-distribute hard copies. Copy feature highlights include:

- ID Card Copy — scans both sides of an ID card and prints it face up on a single sheet of paper
- Automatic booklet creation — create booklets by, for example, printing four letter-size pages onto tabloid-size media for folding as a four-page booklet
- Automatic tray selection — selects correct tray for specified media without requiring user intervention
- Automatic two-sided copies — create two-sided copies of single- or double-sided originals
- Bates Stamping — a key feature for legal and health-care environments, adds sequential page numbering, date and time marks, copyright information, and other information to copy output
- Electronic precollation — collates multiple-set copies in memory to maximize output speed
- Multi-up — prints multiple original pages onto a single copied page
- Sample set — prints the first copy set for verification before releasing the remaining sets
- Store and recall job programming — store settings for complex, commonly executed copy jobs

EVALUATE VERSATILITY (CONTINUED)

PRINT FEATURES

As with copying, the WorkCentre 7346 multifunction printer delivers output speeds to fit your organization's specific needs. A black-and-white print speed up to 45 ppm and color print speed up to 40 ppm, combined with first-page-out times as fast as 4.8 seconds for black-and-white and 6.7 seconds for color, gets your print jobs done quickly.






Building on the impressive printing performance is an impressive array of print features, highlighted by:

- Booklet creation — formats and organizes electronic documents for printing as hard-copy booklets
- Cover selection — choose specialty media for cover pages
- Secure/delay print — print jobs are held in memory until a PIN code is entered at the front panel, ensuring prints are not left unattended at the MFP
- Transparency interleave — inserts blank or printed plain paper between printed transparencies
- Watermarks — Adds labels such as “Draft,” “Confidential,” or customized messages to printed documents



SCAN FEATURES

The WorkCentre 7346 multifunction printer offers powerful network scanning capabilities for companies that routinely digitize hard-copy documents. The 75-sheet DADF processes single- and double-sided originals at 50 ipm black-and-white and 45 ipm color, meaning even long scan jobs are processed quickly. Network scanning serves as a digital on-ramp for your hard-copy documents, enabling them to be distributed, edited, archived, and utilized by your enterprise applications.

The WorkCentre 7346 multifunction printer supports a variety of scan destinations, including:

-  Scan to Email — send scanned images to email recipients, with authentication and LDAP for network security and integration
-  Scan to Mailbox — stores scanned images on hard drive for distribution or retrieval
-  Scan to PC — scans documents directly to a PC by selecting a PC from the local address book or by browsing the network on the front panel UI
-  Scan to Home — sends scanned images to a preassigned “home” destination, such as an email address, FTP location or folder
-  Network Scanning — templates enable transportation of scanned images to multiple predefined locations

Additional Xerox scan software is available to expand the capabilities of your WorkCentre 7346 multifunction printer:

-  Xerox Scan to PC Desktop® — bundles Nuance® PaperPort® software for scanning, organizing and sharing images with Nuance OmniPage® software, which converts hard-copy documents into searchable, editable electronic files
-  Xerox SMARTsend® — eases the process of editing metadata, choosing file formats, and distributing scanned files to multiple destinations, including remote printers, email, network folders, mailboxes, fax destinations, and more

EVALUATE VERSATILITY (CONTINUED)

In addition to a flexible set of destinations and additional software, the WorkCentre 7346 multifunction printer includes a set of scan features highlighted by:



- File formats — support for PDF, searchable PDF, PDF compression, JPEG, TIFF, multipage TIFF, and XPS®



- Job Flow Sheets — facilitate routine workflows like expense report applications or electronic routing and storing of incoming faxes

- Scan resolution — up to 600 x 600 dpi



- Thumbnail preview (optional) — view thumbnail preview of documents stored in the mailbox

FAX FEATURES

The WorkCentre 7346 multifunction printer also offers optional fax capabilities that help further consolidate office devices. This full-featured fax solution combined with the concurrency of the WorkCentre 7346 multifunction printer means you won't need a dedicated fax machine any longer. Fax features include:

- Walkup fax — traditional 33.6 Kbps phone-line faxing via front panel with one- and three-line options
- Network server fax — allows faxes to be sent and received digitally over the network with support for SMTP and POP3
- Internet fax — transmits faxes digitally via the internet with support for SMTP and POP3
- LAN fax — transmits faxes digitally from desktop computers via print driver
- Fax forward to electronic destination — distributes received faxes to preset email addresses, FTP or SMB location for archiving and distribution
- Large format support — print received faxes on 11 x 17 in. paper
- Two-sided fax — send and receive two-sided documents
- Secure fax — holds received faxes until PIN code is entered
- Format support —
 - Phone-line fax — MH, MR, MMR, G3
 - Internet/Network server fax — PDF, multipage TIFF, image-only PDF with G3 MH/G4 MMR/JPEG compression, TIFF-FX with G3 MH/JPEG compression



EVALUATE VERSATILITY (CONTINUED)

MEDIA SUPPORT AND CAPACITY

The WorkCentre 7346 multifunction printer gives you two paper tray options to fit your needs. For organizations that print higher volumes of oversize documents, the Three-Tray Module offers four total trays capable of handling up to 2,180 sheets of 11 x 17 in. (A3) paper. For organizations that print a higher volume of pages on letter-size (A4) paper, the High-Capacity Tandem Tray option offers paper capacity of up to 3,140 sheets. Paper capacity and media support offered by the WorkCentre 7346 multifunction printer includes:

Standard Trays —

- Tray 1 — 520 sheets, 5.5 x 7.2 in. (A5) to 11 x 17 in. (A3), 16 to 110 lb. bond (64 to 220 gsm)
- Tray 5 (Bypass Tray) — 100 sheets, 4.13 x 5.83 in. (A6) to 12 x 18 in. (SRA3), 16 to 110 lb. bond (64 to 220 gsm)

Three-Tray Module Option —



- Trays 2 through 4 — 520 sheets each, 5.5 x 7.2 in. (A5) to 11 x 17 in. (A3), 16 to 110 lb. bond (64 to 220 gsm)

High-Capacity Tandem Tray Option —



- Tray 2 — 520 sheets, 5.5 x 7.2 in. (A5) to 11 x 17 in. (A3), 16 to 110 lb. bond (64 to 220 gsm)
- Tray 3 — 870 sheets, 8.5 x 11 in. (A4), 16 to 110 lb. bond (64 to 220 gsm)
- Tray 4 — 1,130 sheets, 8.5 x 11 in. (A4), 16 to 110 lb. bond (64 to 220 gsm)

FINISHING FEATURES

The WorkCentre 7346 multifunction printer gives you multiple choices to ensure you get the right set of finishing features for your employees, and the documents they produce on a regular basis. When purchasing a WorkCentre 7346 multifunction printer MFP, you'll have your choice of:

Offset Catch Tray (no finisher option) —

- 400-sheet offsetting (200-sheet offsetting with any finisher option)

Office Finisher —



- 1,000-sheet stacking
- 50-sheet multiposition stapling

Advanced Office Finisher —



- 3,500-sheet stacking plus 500-sheet top tray
- 50-sheet multiposition stapling
- 2- or 3-hole punch

Professional Office Finisher —



- 1,500-sheet stacking plus 500-sheet top tray and booklet tray
- 50-sheet multiposition stapling
- 2- or 3-hole punch
- Up to 15-sheet saddle-stitch booklet making
- Up to 5-sheet V-folding

EVALUATE VERSATILITY (CONTINUED)

Add the EFI™ Fiery System 8e® Network Controller to the WorkCentre 7346 multifunction printer for more printing features and functionality.

Ideal for any business that wants to take its office printing capabilities to a new level. The EFI Network Controller includes easy-to-use color management controls, powerful workflow and productivity tools and security features.

- True 600 x 600 x 8 dpi print resolution for outstanding detail and clarity.
- PANTONE® Color Calibrated certification ensures precise colors, every time.
- Fiery ColorWise® offers standard-setting color tools and user flexibility.
- A 2.8 GHz processor and 512 MB memory deliver the power to handle even the most complex print jobs.
- Command WorkStation® 4.6 capability via PC or Mac, with Queue Management and Job Preview, makes it easy to program, monitor and manage your office workflows.
- Freeform, variable data printing capabilities enable you to customize your output to a target audience.
- The Fiery RIP-and-Print utility streamlines the print-job processing workflow in the office environment.

EXPANDABILITY

Your Xerox multifunction printer is now more productive, and your work processes are streamlined. Menus and languages specific to your business or workgroup, such as “fax to accounts payable” or “submit to claims department” can appear on the touch screen of your MFP. Xerox Extensible Interface Platform, or EIP, is at the heart of this. It enables a variety of applications that extend the power of your MFP by allowing you to securely find, save, print and share critical information with just a few easy steps right on your system’s touch screen. That’s Xerox, working for you.

- Access and print information without the use of a computer.
- Simply scan information and store it exactly where you want it.
- Control costs with user-friendly accounting right from the device touch screen.
- Display customized user preferences on the touch screen with the simple swipe of your ID card.
- Simplify the process for complex fax distributions.
- Improve your device management processes with custom displays.
- Connect with a variety of advanced partner solutions created with your business in mind.



EVALUATE SECURITY CAPABILITIES

What types of **security requirements** are critical to your office? Does the device have the **security features** to meet these demands? Can device access be **password protected**? Does the system **remove latent images** on its hard drive? Does the system have features in place to **protect confidential documents**?

THE XEROX
ADVANTAGE

HOW THE WORKCENTRE 7346 MFP EXCEEDS THE SECURITY REQUIREMENT:

INTEGRATED SECURITY

In today's business environment, security is a critical competency. The technology you deploy into your organization must have a complete set of capabilities to help keep your confidential information safe. The WorkCentre 7346 multifunction printer delivers security features that protect your confidential information at all points of document vulnerability:



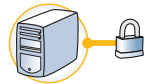
Document —

- Password-protected PDF — protects scanned files by establishing a PIN access code for viewers
- Secure fax — protects faxed documents by requiring a PIN access code before the received fax is printed
- Secure print — holds print jobs at the MFP before they are printed



Device —

- Audit log — tracks printing, scanning and network fax activities by user, time and date
- Restrict job detail display — hides job names when nonauthenticated users view job queue
- Secure Access Unified ID System™ — magnetic card-based access eases authentication and access to device features
- User Authentication — restricts access to device features and management settings by validating user names and passwords, with SMB, LDAP, LDAP+SSL, and Kerberos integration



Hard Drive —

- Encrypted disk drive — applies 128-bit encryption to data stored on the MFP hard drive
- Image overwrite — electronically “shreds” data stored on the MFP hard drive using an algorithm specified by U.S. Department of Defense Directive 5200.28-M



Network —

- Digitally signed documents — creates signatures using a variety of methods, including S/MIME, password encryption and device certificates
- Encrypted email — encrypts email messages sent by the MFP to your email server
- Fax and network isolation — controller architecture separates the network connection and the fax telephone line to avoid incoming fax-based network attacks
- Firewall — restricts access via IP address filtering, domain filtering and port blocking
- IEEE 802.1x protocol — ensures devices connected to the network are properly authenticated
- IPSec — encrypts print jobs sent to the MFP utilizing IPSec
- IPv6 support — built-in support for networks utilizing the IPv6 standard
- Secure data protocols — secures network communications with industry standards, including HTTPS (SSL), SNMP v3.0, and IPSec

EVALUATE SECURITY CAPABILITIES (CONTINUED)

THIRD-PARTY CERTIFICATION

Xerox has a proven track record of participation and compliance with emerging government security standards and third-party testing and certification. The prime example of the Xerox commitment is our participation in the Common Criteria Certification process: Xerox submits its products, along with highly structured statements of the product's information security capabilities, for validation by an independent, government-sponsored laboratory. Certification is a costly, rigorous, time-consuming process. The WorkCentre 7346 multifunction printer has received Common Criteria Certification. Xerox currently has more MFP products certified than any vendor in the industry.

For more information on Xerox security, visit www.xerox.com/security.

EVALUATE COST CONTROL

One of the most important things to consider when evaluating a device with color **capabilities** is to understand the **cost of operation**. Does the vendor provide the tools you need to **control access and use of** the system's color features? Are you charged a premium for the black-and-white output you create because the system is color capable? Are the **accounting tools** available to help **track and assign** printing costs? Does the vendor offer **tools and services** to help you right-size your deployment?

THE XEROX
ADVANTAGE

HOW THE WORKCENTRE 7346 MFP EXCEEDS THE COST CONTROL REQUIREMENT:

ACCOUNTING CAPABILITIES

Xerox provides multiple levels of accounting capabilities to give your organization the control it needs for tracking and assigning color costs. Xerox also provides tools to control employee access to the color features of your WorkCentre 7346 multifunction printer — you have complete control of your color output costs.

- Auditron — controls, tracks and enables quota setting for color output for copy, print, scan and fax activity by user or workgroup for analysis and billing purposes
- Xerox Standard Accounting (XSA) — builds on Auditron by adding web-based remote management
- Network Accounting — job-based accounting enables Xerox MFPs to integrate with third-party accounting and billing solutions from Xerox Business Partners
- Active Directory color control — network administrators can manage and assign color access permissions to users and workgroups in Active Directory, while black-and-white copy and print capabilities are available to any user
- Foreign device interface — enables you to add external third-party access and accounting devices to your Xerox MFP, such as magnetic card readers or coin-operation devices
- Black-and-white print drivers — print drivers with color features disabled to prevent access by employees or workgroups that don't need them

EVALUATE COST CONTROL (CONTINUED)

ACCURATE COLOR COSTS

Two features have been specifically developed to accurately manage color and black-and-white copies and prints, as well as manage access to walk-up color copying features.



- **Automatic Color Copy** — the device detects black-and-white and color pages separately in the original source document and prints and charges for them at their respective rates. In addition, you can select “Black-and-White Only” to copy color documents in black-and-white. These output settings can be assigned as the copy defaults for the device to limit color usage and manage costs.
- **Automatic Color Print** — the device detects black-and-white pages within a print job even with the output selection set to Color. The black-and-white printed pages are then printed and charged at the black-and-white rate.

ASSESSMENT OPTIONS

Xerox can help you decrease your overall document costs by optimizing and right-sizing your technology deployment. Three levels of assessment tools and services are available to help you deploy the right mix of equipment to best serve the needs of your environment:

- **LEVEL 1: Xerox Office Efficiency Calculator** — A five-minute, web-based “instant analysis” offers suggestions on your technology needs by comparing information you enter on your environment against key industry metrics.
- **LEVEL 2: Xerox Office Productivity Advisor (XOPA)** — More in-depth web-based tool assesses your specific document environment. XOPA results suggest better ways to manage page volume between printing, copying and faxing — they deliver end user satisfaction and cost efficiency. XOPA is a free service performed by your local Xerox sales representative.
- **LEVEL 3: Xerox Office Document Assessment (ODA)** — An analytical model that measures and analyzes your current document production infrastructure, the ODA provides in-depth improvement plans for significant cost savings and increased efficiency. The ODA is a six-sigma, fee-based tool and consultative service oriented towards enterprise-level organizations.

SECTION 3

Configurations, Specifications, Supplies, Support and Information Sources

WORKCENTRE 7346 CONFIGURATION SUMMARY



		WorkCentre 7346
Speed		Up to 45 black-and-white / 40 ppm color
Duty Cycle		150,000 images / month
Device Memory		1.5 GB minimum plus 40 GB hard drive
Paper Handling		
Paper Input	Standard	Duplex Automatic Document Feeder: 75 sheets (based on 80 gsm paper) Bypass Tray: 100 sheets; Size: 4.13 x 5.83 in. to 12 x 18 in. / 105 x 148 mm to SRA3 Tray 1: 520 sheets; Size: 5.5 x 7.2 in. to 11 x 17 in. / 139.7 x 182 mm to A3
	Optional	Three Tray Option (Total 2,180 sheets): Adds three 520-sheet paper trays; Size: 5.5 x 7.2 in. to 11 x 17 in. / 139.7 x 182 mm to A3 High-Capacity Tandem Tray (Total 3,140 sheets): Adds one 520-sheet paper tray; Size: 5.5 x 7.2 in. to 11 x 17 in. / 139.7 x 182 mm to A3, one 800-sheet tray and one 1,200-sheet tray; Size: 8.5 x 11 in. / A4
Paper output	Standard	400-sheet Offsetting Center Catch Tray (Cannot be accessed with the Advanced Office Finisher or Professional Finisher attached)
	Optional	Office Finisher: 1,000-sheet stacker, 50-sheet multiposition stapling Advanced Office Finisher: 3,000-sheet stacker and 500-sheet top tray, 50-sheet multiposition stapling and hole punch Professional Finisher: 1,500-sheet stacker and 500-sheet top tray, 50-sheet multiposition stapling and hole punch, saddle-stitch booklet maker, V-Fold
Security		Fax security, Secure Print, Image overwrite security, Password Protected PDF, Encrypted Disk Drive and Email and Print Channel via SSL/TLS Encryption, Secure Access, IPv6
Accounting		Auditron – Xerox Standard Accounting – Copy, Print, Fax, Scan; Network Accounting (Business Partners); Color Access for copy and print via Active Directory
Copy		
First page out time		4.8 seconds black-and-white / 6.7 seconds color
Copy resolution		600 x 600 dpi
Copy features		Automatic two-sided, Color touch screen interface, Electronic pre-collation, Automatic tray selection, Build Job, Negative/Mirror image, Automatic booklet creation, Multi-up, Auto RE, Mixed-size originals, Covers insertion, Sample set, Book copying, Store and recall job programming, Annotation, Auto color selection, Area designation, Watermarks, Contone photo mode
Print		
Processor / PDL		667 MHz / Adobe® PostScript® 3™, XPS®, HP-GL2™, PCL® 5c / PCL 6 emulations
Connectivity		10/100Base-TX Ethernet, 10Base2, 10Base5 (via adapter), USB (optional), Wireless Ethernet 802.11b (via third-party adapters)
Print resolution		600 x 600 dpi, 1200 x 1200 dpi
Print features		Automatic two-sided, Secure Print, Delay print, Sample set, Booklet creation, Cover selection, Paper selection by attribute, Multi-up, Watermarks, Banner sheets, Fit to new paper size, Transparency interleave, Output tray selection, Store and recall driver settings
Fax	Optional	Walkup fax (one-line and three-line options), Network server fax
Fax features		Internet fax, LAN fax, Fax Forward, Duplex Send and Receive, print on fax up to 11 x 17 in. / A3, Fax Build Job
Scan	Optional	Scan to Email, Scan to PC desktop, Scan to mailbox, Scan to FTP, Thumbnail Preview, Various Xerox Business Partner Solutions, SMARTsend®
Operating Systems		Windows XP/Server 2003/Vista; Mac OS 10.3 and above; AIX 51 v5.3; HP UX 11.0/11i v2; Solaris 8/9/10; Linux Fedora Core 1/5; Red Hat ES4; SUSE 10.x
Scan features		Text searchable PDF, XPS, JPEG, TIFF, Multi-page TIFF, Mixed Size-Originals, Scan Build Job, Auto Color
Other Options		Foreign Device Interface, Media Card / USB Thumbdrive Reader, Thumbnail Preview, EFI Fiery Network Controller

WORKCENTRE 7346 SPECIFICATIONS

Device Management	Xerox CentreWare Web, Xerox CentreWare IS, Xerox CentreWare for Unicenter® TNG®, Tivoli® Netware®, Microsoft Management Console, HP® OpenView®
Print Drivers Support	Microsoft Windows® — XP, Server 2003, Server 2003 64-bit, Vista, Vista 64-bit Apple Mac OS® — 10.3 and higher
Media Handling	Supported sizes: Standard Tray — Tray 1: 5.5 x 7.2 in. (A5) to 11 x 17 in. (A3) Tray 5 (Bypass tray): 4.13 x 5.83 in. (A6) to 12 x 18 in. (SRA3) Three-Tray Module Option — Trays 2 through 4: 5.5 x 7.2 in. (A5) to 11 x 17 in. (A3) High-Capacity Tandem Tray Option — Tray 2: 5.5 x 7.2 in. (A5) to 11 x 17 in. (A3) Trays 3 and 4: 8.5 x 11 in. (A4)
	Supported weights: Trays 1 through 5: 16 to 110 lb. bond (64 to 220 g/m2)
Operating Environment	Required Temperature Range — 50° to 82° F (10° to 28° C) Required Relative Humidity — 15% to 85%
Electrical	Power (North America) — 220 to 240 V Nominal, 50/60 Hz, 10A Power Consumption — <ul style="list-style-type: none"> • Running: < 1,012 watts • Standby: < 200 watts • Low-Power Mode: < 80 watts • Sleep Mode: < 10 watts Warm-Up Times — <ul style="list-style-type: none"> • From Sleep: 45 seconds (max) • From Low-Power Mode: 30 seconds (max)
Physical Dimensions (Fully configured)	Width — 73 in. (1,856 mm) Depth — 33 in. (834 mm) Height — 46 in. (1,161 mm) Weight — 616 lbs. (280 kg)
Agency Approvals	FCC Class A Compliant (U.S.), DOC Class A Compliant (Canada), 89/336/EEC (Europe), UL Listed (UL 60950-1, First Edition), CB Certified (IEC 60950-1/EN 60950-1), 73/23/EEC (Europe), Novell Tested and Approved, Windows Hardware Quality Labs

WORKCENTRE 7346 SUPPLIES AND OPTIONS

Consumables and Routine Maintenance Items	Description	Details	Part Number
	Black Toner Cartridge	26,000 pages	6R1175
	Cyan Toner Cartridge	16,000 pages	6R1176
	Magenta Toner Cartridge	16,000 pages	6R1177
	Yellow Toner Cartridge	16,000 pages	6R1178
	Smart Kit™ Drum Cartridge	45,000 impressions	13R00624
	Smart Kit™ Waste Cartridge	30,000 impressions	8R12903
	Smart Kit™ Fuser Kit (110 V)	150,000 impressions	8R13055
	Smart Kit™ Fuser Kit (220 V)	150,000 impressions	8R13056
	Staple Refill	For Office Finisher (3 x 5,000 staples)	8R12915
	Staple Refill	For Advanced and Professional Office Finishers and Convenience Stapler (3 x 5,000 staples)	8R12941
	Staple Cartridge	For Professional Finisher Booklet Maker (4 x 5,000 staples)	8R12925
	Staple Cartridge	For Advanced and Professional Office Finishers and Convenience Stapler (1 cartridge)	8R12964

Options	Description	Details
	Office Finisher	1,000-sheet capacity (stacking, multiposition stapling)
	Advanced Office Finisher	4,000-sheet capacity (stacking, multiposition stapling, hole-punching)
	Professional Office Finisher	2,000-sheet capacity (stacking, multiposition stapling, hole-punching, bifold/saddle-stitch booklet making, V-folding)
	Convenience Stapler Kit (110 V)	
	Convenience Stapler Kit (220 V)	
	Three-Tray Module	2,180-sheet capacity
	High-Capacity Tandem Tray	3,140-sheet capacity
	One-line Fax with Internet Fax	
	Three-line Fax with Internet Fax	
	Fax Server Enablement	
	Scan Kit	Change from network scanning with email
	Thumbnail Preview	
	Secure Watermark	
	Scan to PC Desktop	Professional or SE Edition
	Media Print	Print from USB drive or memory card
	USB Parallel Port Printing	
	Foreign Device Interface	
	Mobility Plate	

SUPPORT AND ADDITIONAL INFORMATION SOURCES

UNRIVALED SERVICE AND SUPPORT

Behind every Xerox product is a large network of customer support that's unrivaled in the industry and available when you need it. Xerox service professionals use leading-edge technologies to keep you up and running. They're even linked to the engineers who designed your product, so you can be confident when you choose Xerox. And Genuine XEROX® supplies are always readily available.

TOTAL SATISFACTION GUARANTEED

The exclusive Xerox Total Satisfaction Guarantee, recognized as unique in the industry, covers every Phaser device that has been continuously maintained by Xerox or its authorized representatives under a Xerox express warranty or Xerox maintenance agreement. You decide when you're satisfied.

XEROX OFFICE SERVICES SUPPORT

Asset Management Services

- Asset Optimization and Tracking — Process and tools to optimize an enterprise's office output infrastructure and reduce hard costs
- Break-Fix Management — Single point of ownership and management for break-fix service for all brands of office output devices, regardless of manufacturer
- Supplies Management — Process and tools to procure, monitor and replenish all document-related supplies proactively

Imaging and Output Management Services

- Output Management — Single point of management of office output from all output devices, regardless of manufacturer
- Image Capture and Workflow — Cost-efficient solutions for capturing, managing, retrieving and distributing information into digital repositories

Support Services

- Technology Procurement and Deployment — A creative and flexible end-to-end print/computer product acquisition solution that uses a single-point-of-contact model while lowering the total cost of acquisition
- Help Desk Services — A broad range of enterprise services, managed through a centralized single point of contact and delivered through either an on-site or off-site model
- End User Services — Microsoft software implementation, IT project consulting, and customer education

Student/Patron Access Services

- Student and Library Patron Access — Custom designed and implemented customer-managed solutions for student and library patron print-access management

ADDITIONAL INFORMATION SOURCES

WorkCentre 7346 Multifunction Printer's Front Panel:

- The front panel offers tools and information pages to help with machine setup, feature selections, operational problems, media feed and supply issues.

Customer Documentation Contains:

- Installation Guide
- Quick User Guide
- Software and Documentation CD-ROM
- Registration Card
- Warranty Booklet

On the Web:

Visit www.xerox.com/office for:

- Product, supply and support information
- Downloading drivers
- Finding your local Xerox sales representative
- Online documentation

Visit www.xerox.com/office/support for:

Support and service information, including the same troubleshooting Knowledge Base used by Xerox Customer Support staff to provide the latest technical information on:

- Application issues
- Errors
- Print-quality issues
- Troubleshooting

NOTES



Questions? Comments? Problems?

If you have any questions, please contact your
Xerox sales representative, call **1-800-ASK-XEROX**,
or visit us on the web at **www.xerox.com/office**

