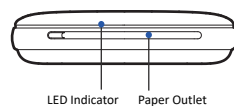
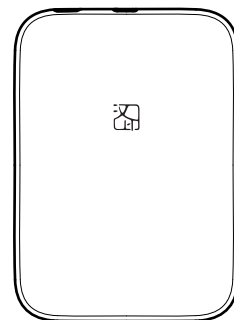
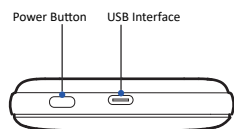


Mini Photo Printer

Note: The items in the package are actually based on the order.



Packing List



USB Type-C Cable



Photo Paper (5pcs)



Quick Start Guide

LED Indicator Status

Red LED	Error Status	ON: Error (Paper jam/Out of paper /Cover opened)
		Slow Flash: Low power
Blue LED	Basic Status	OFF: Power off
		ON: Standby
		Slow Flash: Charging

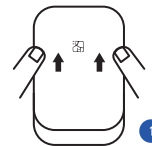
- 1. When red LED stays on, you can check the detailed error condition on APP after connecting it to the printer.
- 2. When updating the printer firmware, the blue LED will flash quickly.

Paper Loading

Steps & Notes

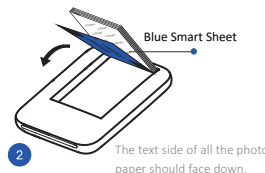
01

Place your hands on both sides of the top cover, push it towards the direction as shown on Figure 1.



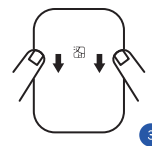
02

Take out one packet of photo paper (including 5pcs or 10pcs of photo paper and 1pc of blue smart sheet), and place them into the printer as shown on Figure 2. The photo paper should be placed after the blue smart sheet and its text side should face down. Please note that never place more than 10pcs of photo paper, and use the photo paper specially for the printer, use other brands of that may affect the print quality.



03

Assemble the top cover.



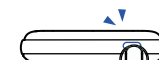
Precautions for Photo Paper

1. The photo paper is easy to get damp, please use it as soon as possible after opening.
2. Avoid excessive direct sunlight and over low temperature.
3. Avoid device damage caused by using non-special paper.
4. Do not fold or damage the paper.

- 1. The blue smart sheet is used for color correction and TPH cleaning. When printing after loading 1 packet of paper for the first time, the blue smart sheet will be automatically out firstly, and then the photo will be printed out.

How to Print

Steps & Notes



1. Hold down the power button for 3 seconds, the printer will be turned on.

Turn on the Bluetooth on your mobile phone, then select "MT53_XXXXXX" in the Bluetooth list to connect. Remark: "XXXXXX" indicates last six digits of Bluetooth address.



Open the photo printer APP, choose "MT53", select the photos and enter the print preview.



Click the print icon that it will show the device list, click the same model ("MT53_XXXXXX") and confirm printing. Then the printer will conduct printing.

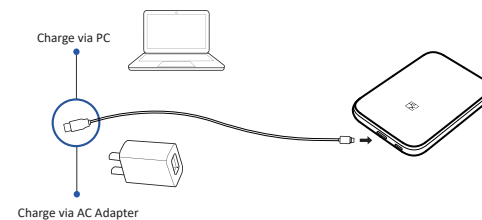
- 1. If Bluetooth has been unconnected for 5 seconds, the printer will enter sleeping mode, press the power button to awaken it.
- 2. In sleeping mode, if not awoken the printer within 5 minutes, it will be off automatically.
- 3. When using it for the second time, just click the print icon that the printer will be connected automatically and send data to print.
- 4. Do not touch the photo paper during printing, or else it may appear stripes.

Precautions for Printing

1. Before putting the photo paper into the printer, do not touch the printing surface of the photo paper with your hands to ensure that the printing surface is free of dirt and dust particles, otherwise the printing effect will be affected.
2. It is not allowed to continuously print more than 10 sheets, or else the print head may accumulate dust, which needs to be cleaned by the blue smart sheet again.
3. After printing 3 sheets continuously, the printer may have overheat protection for the print head, and the printing will be suspended forcibly, which is a normal phenomenon. It can be printed again after cooling the print head.

Battery Charging

1. When the battery power is low, the LED indicator will turn red and flash slowly. Please charge it by the supplied USB cable in time. If you continue printing, it may power off automatically.
2. To charge, insert one end of the USB cable into the printer and the other end into the AC adapter or PC. When connected, the LED indicator will turn blue and flash slowly to indicate charging.
3. It takes about 60 to 90 minutes for fully charge. After that, the blue LED indicator will be lighting all the way.



- 1. The printer can be charged via computer USB port or AC adapter. Please note that the AC adapter is not supplied.
- 2. If charging via AC adapter, connect the USB cable to a power source of supplying DC 5V/2A.

FCC WARNING

This device complies with part 15 of the FCC Rules. Operation is subject to the following two conditions: (1) this device may not cause harmful interference, and (2) this device must accept any interference received, including interference that may cause undesired operation.

Any changes or modifications not expressly approved by the party responsible for compliance could void the user's authority to operate the equipment.

NOTE: This equipment has been tested and found to comply with the limits for a Class B digital device, pursuant to Part 15 of the FCC Rules. These limits are designed to provide reasonable protection against harmful interference in a residential installation. This equipment generates, uses and can radiate radio frequency energy and, if not installed and used in accordance with the instructions, may cause harmful interference to radio communications.

However, there is no guarantee that interference will not occur in a particular installation. If this equipment does cause harmful interference to radio or television reception, which can be determined by turning the equipment off and on, the user is encouraged to try to correct the interference by one or more of the following measures:

- Reorient or relocate the receiving antenna.
- Increase the separation between the equipment and receiver.
- Connect the equipment into an outlet on a circuit different from that to which the receiver is connected.
- Consult the dealer or an experienced radio/TV technician for help.

The device has been evaluated to meet general RF exposure requirement. The device can be used in portable exposure condition without restriction.



APP Download

Scan the QR code to download APP.

Manufacturer: Xiamen Hanin Electronic Technology Co., Ltd.
Address: Room 305A, Angye Building, Pioneering Park, Torch High-tech, Zone, Xiamen, China
E-mail: support@hpert.com
Web: www.hpert.com

