

# Mi Glass User Manual

## Before Using:

1. Mi Glass MiV1 can be used with Mi 5 , **5S ,5S Plus ,Mi note2** or officially announced compatible device models.
2. When use with Mi 5, **5S ,5S Plus ,Mi note2** it need MIUI support, please upgrade MIUI to requested version.
3. Only for children above the age of 13.
4. Please read Health and safety reminding carefully before using, for safety and accuracy considerations, the content of this user manual will be kept up to date, visit [miglass.mi.com/user manual](http://miglass.mi.com/user manual) to view the latest version

## Health and safety:

1. Use Only In A Safe Environment. The Mi Glass produces an immersive virtual reality experience that distracts you from and completely blocks your view of your actual surroundings. Please pay special attention to avoid falling, collision and other dangers. The Mi Glass equipped with a “pass-through” feature which permits you to temporarily see your surroundings for brief real world interaction. You should always remove the Mi Glass for any situation that requires attention or coordination like walking, riding a bicycle and driving.
2. When using Mi Glass, make sure it is comfortably fixed on the head horizontally to ensure clarity of the image seen.
3. The human-being body will gradually adapt to VR, similar to motion sickness adaptation. Do not use Mi glass when in fatigue, drinking, drug use, indigestion, mental anxiety, cold headache since it will increase the body's sensitivity to adverse symptoms.
4. Do not use Mi Glass in turbulent compartment, vessel since it will increase the body's sensitivity to adverse symptoms.
5. Take at least a 10 to 15 minutes break every 30 minutes. Each person is different, so take more frequent and longer breaks if you feel discomfort.
6. Stop using the device if you feel the heat, the system software will also be monitored to prompt the notification when temperature is too high.
7. Listening to sound at high volumes can cause irreparable damage to your hearing. Background noise, as well as continued exposure to high volume levels, can make sounds seem quieter than they actually are. Due to the immersive nature of the virtual reality experience, do not use the Gear VR with the sound at a high volume so that you can maintain awareness of your surroundings and reduce the risk of hearing damage.
8. Please stop using Mi Glass immediately when experience any of the following symptoms: fainting, loss of consciousness, glasses fatigue, muscle twitching, involuntary movements, blurred vision, distortion, ghosting or other

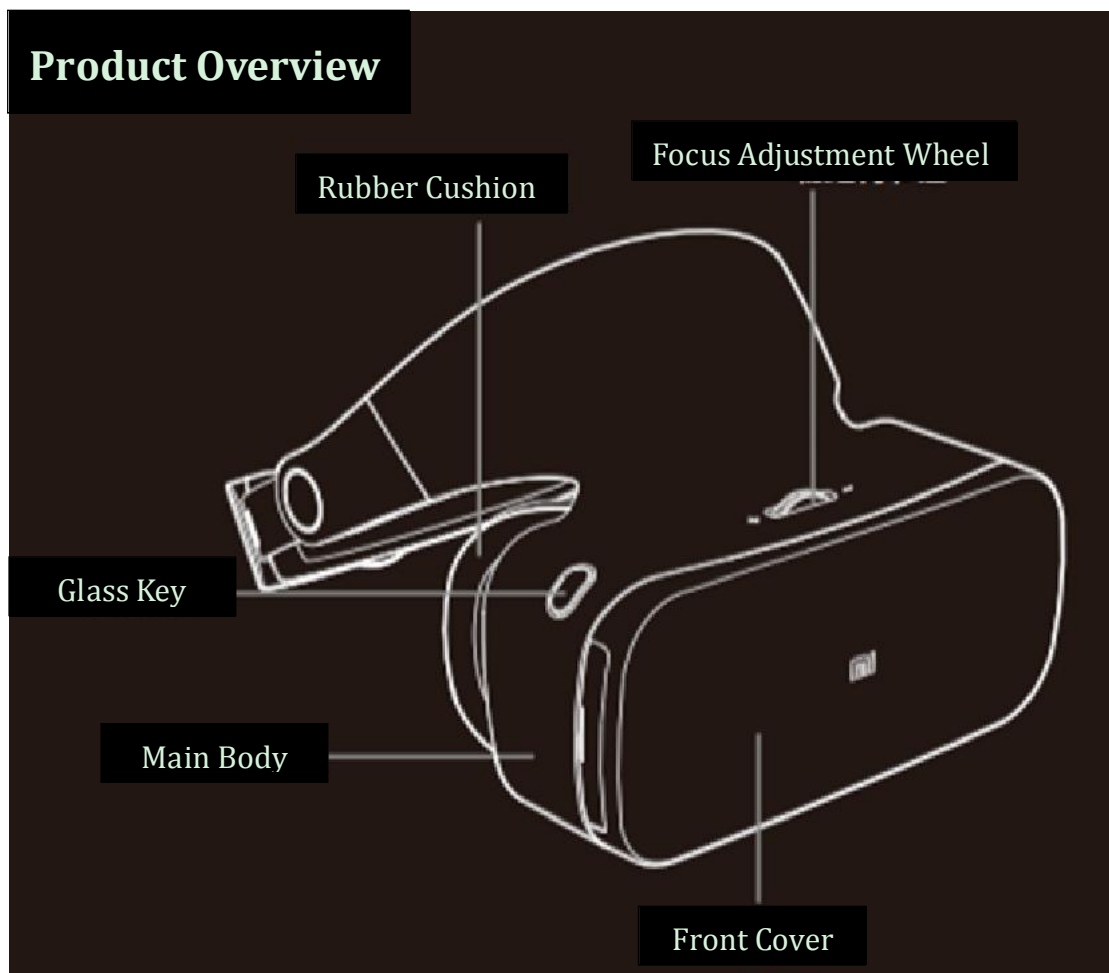
abnormal vision, dizziness, disorientation, balance damage, impaired sense of hand-eye coordination, excessive sweating, excessive salivation, nausea, drowsiness, fatigue or any similar symptoms of motion sickness.

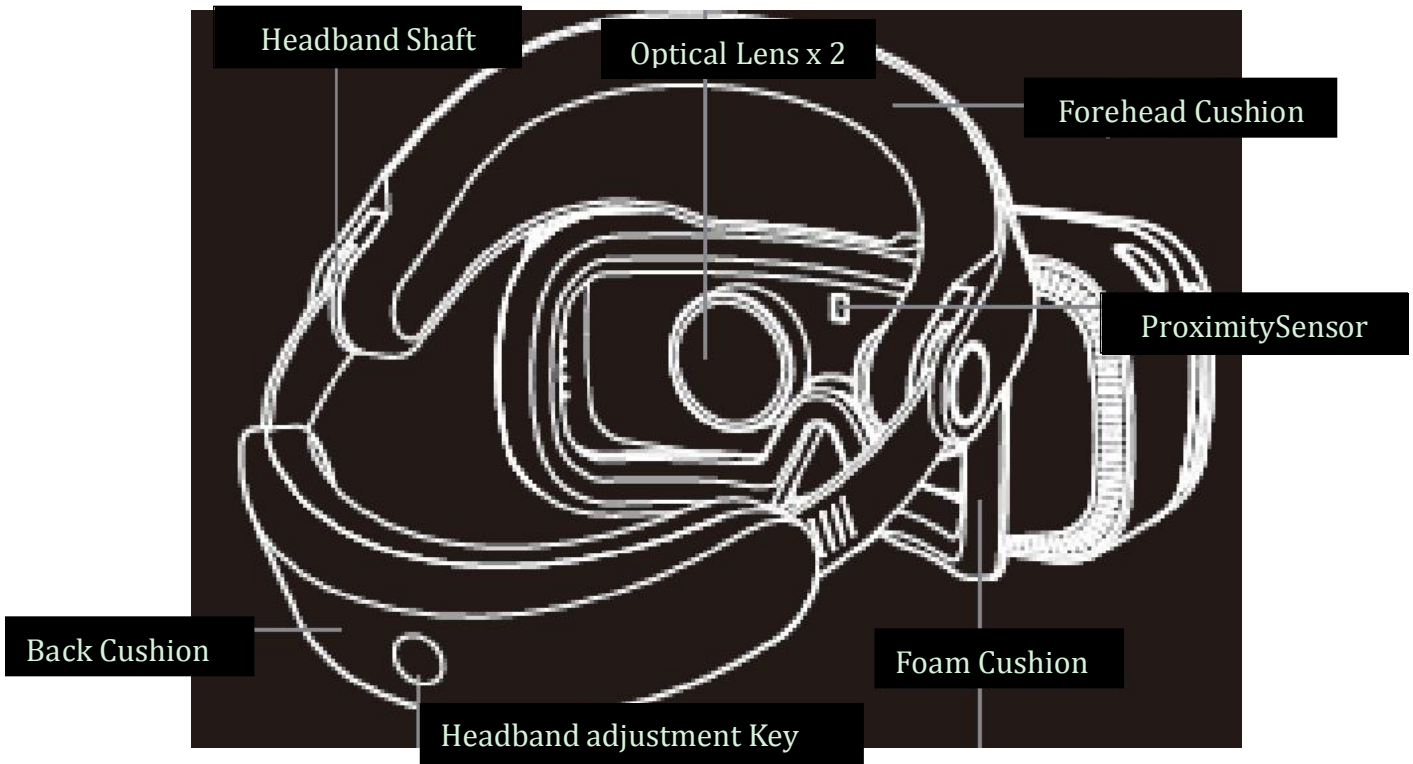
9. Do not drive, operate machinery, or engage in other visually or physically demanding activities that have potentially serious consequences (i.e., activities in which experiencing any symptoms could lead to death, personal injury, or damage to property), or other activities that require unimpaired balance and hand-eye coordination (such as playing sports or riding a bicycle, etc.) until you have fully recovered from any symptoms.

## Package Contents

Mi Glass, remote control, user manual, AAA batteries x2

## Product overview:

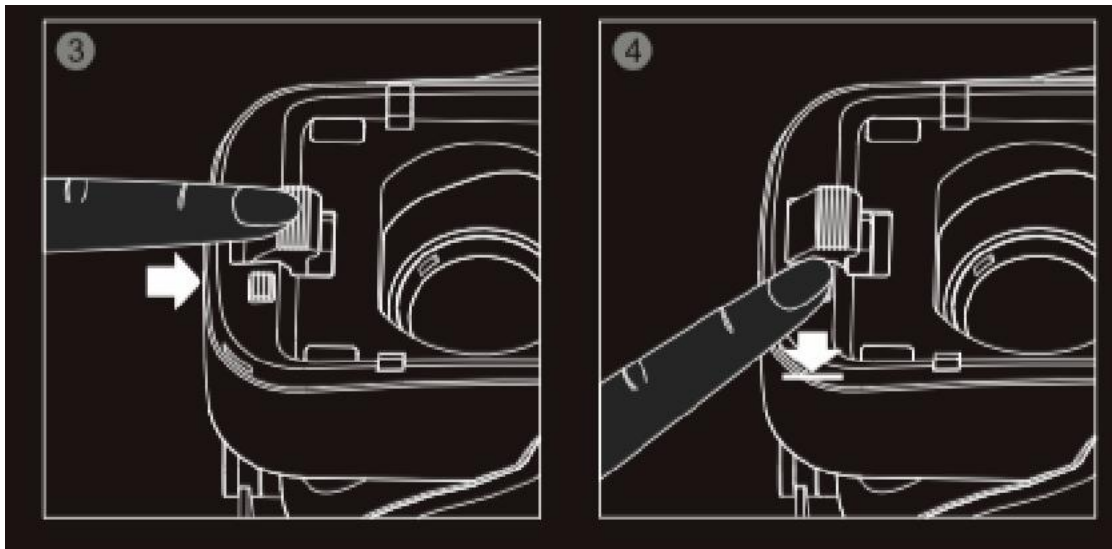
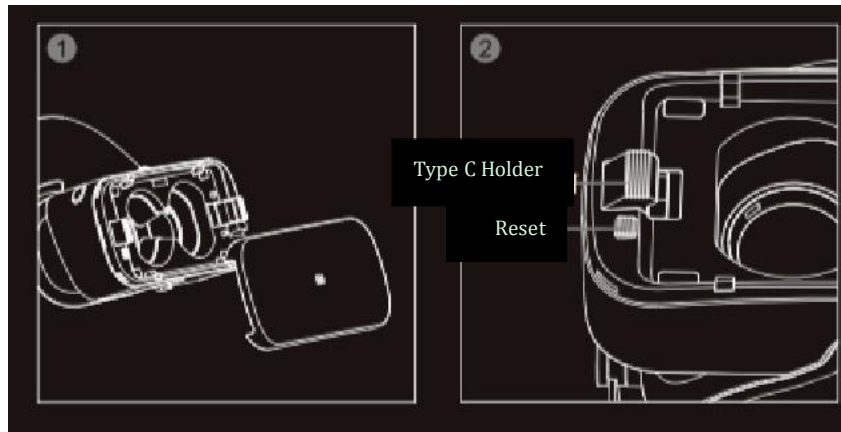




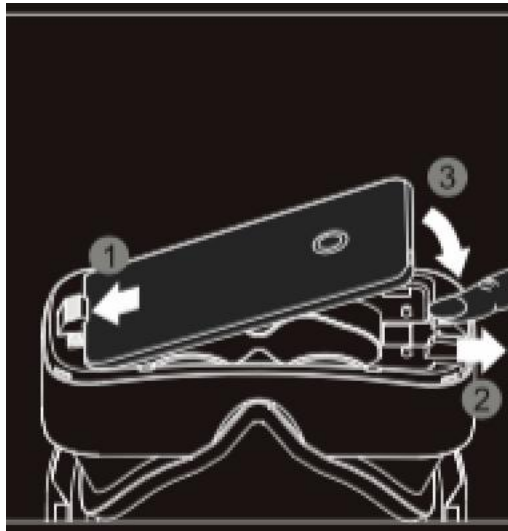
There is no need to charging Mi Glass, it is powered by mobile phone inserted

## Get ready:

1. Adjust Mi Glass phone socket adapter for corresponding compatible mobile devices
  - 1) Remove front cover
  - 2) Type C Connector holder in the outer position is for mobile devices other than Mi 5
  - 3) Push the Type C Connector holder inwards and the position is for Mi 5
  - 4) Press Rest Button to make the holder back to outer position for mobile devices other than Mi 5

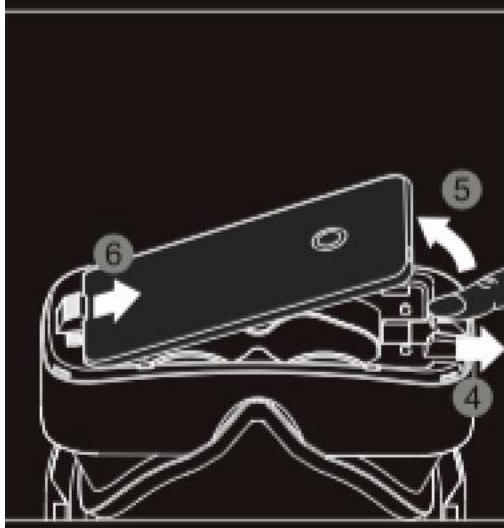


2. Insert the mobile phone into the headset and install the application
    - 1) Please make sure the phone is connected to internet, suggest to link with WiFi
    - 2) Insert the phone with back outwards into Type C connector
    - 3) Wear the Mi Glass, while download notification prompts, remove the phone and complete the installation of the application
- \* Installation of the application requires MIUI support, please updated MIUI to required version



#### Installing phone:

- ① Insert the phone to Type C connector with screen downside
- ② Pull the right device holder out
- ③ Push down the phone into the right device holder to be locked



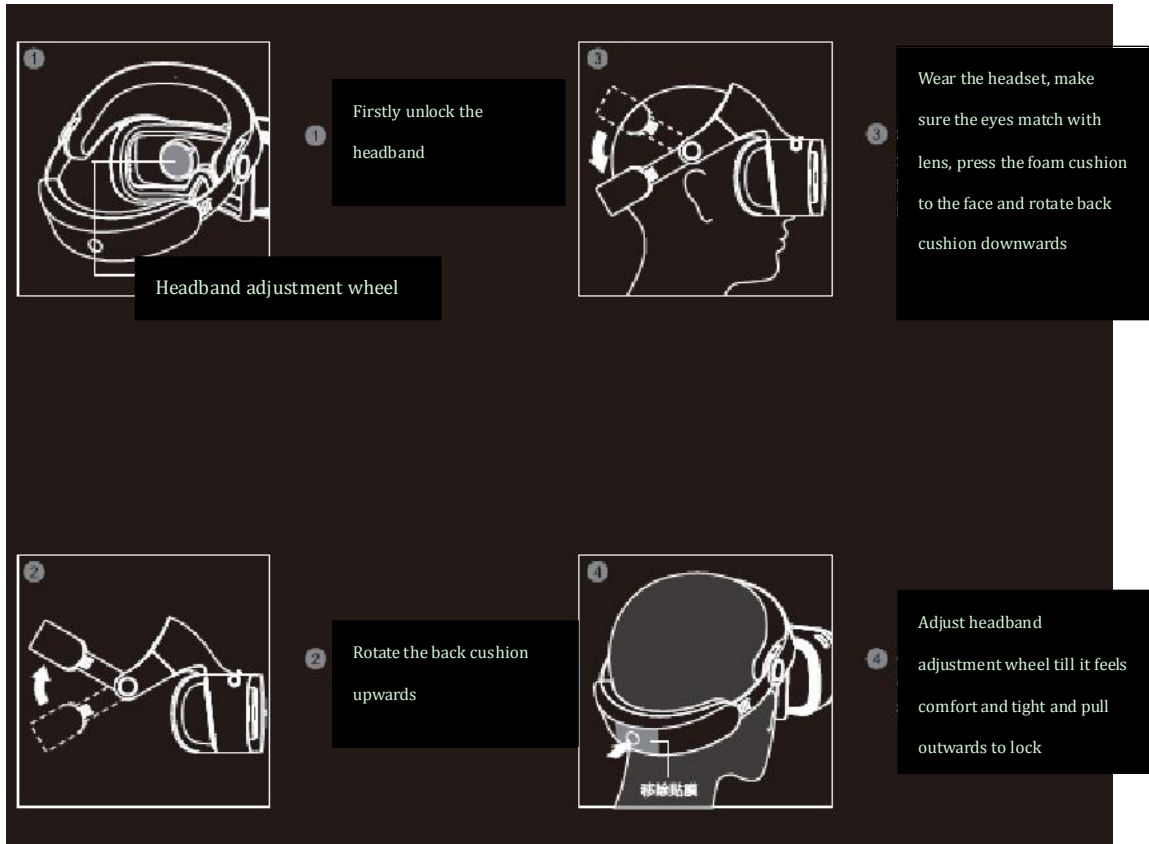
#### Removing phone:

- ④ Pull the right device holder outwards
- ⑤ Slide the phone outwards at an angle
- ⑥ Disconnect the phone from Type C connector

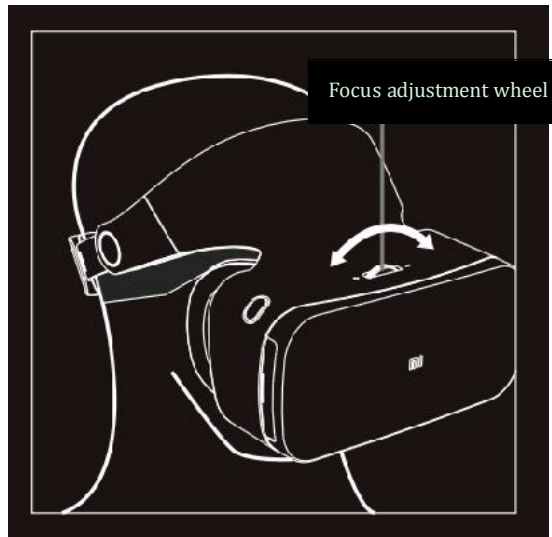
3. Start the application on the phone and complete login and payment bonding following the prompted guidance.
4. Connect Bluetooth remote control
  - 1) Connect the remote control following the prompted guidance on the phone
  - 2) After insert AAA batteries, hold two buttons at same time to trigger the connection status
  - 3) The phone will scan and connect the nearby remote control

### Entering experience virtual reality world

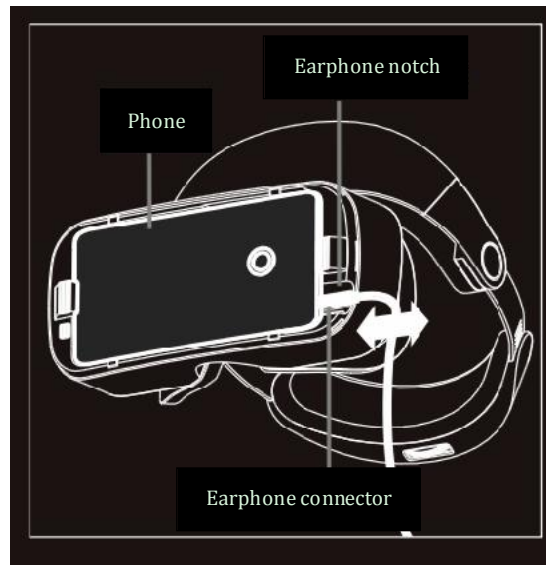
1. After preparation, insert the phone to Mi Glass
2. Properly wear the headset



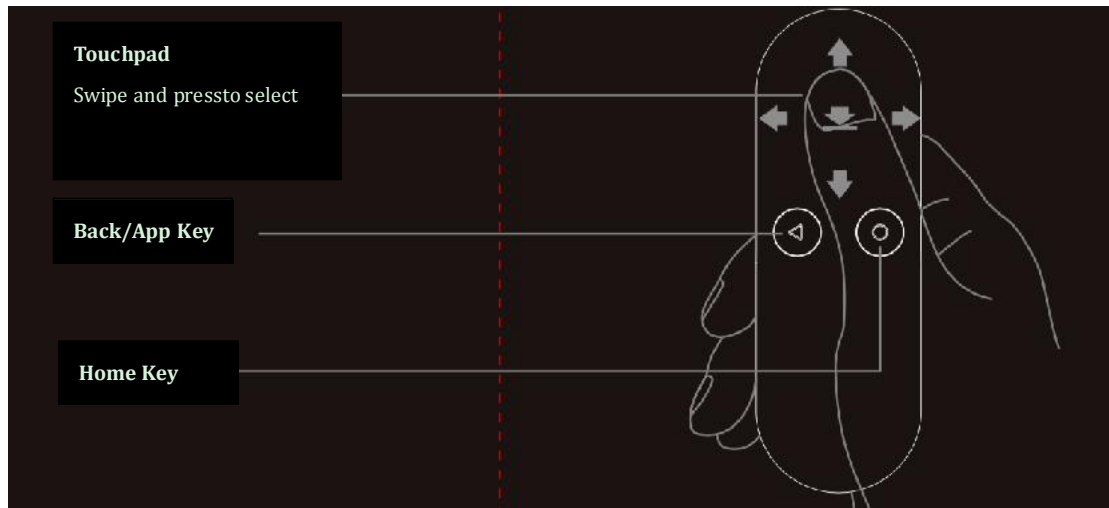
3. Adjust "Focus adjustment wheel" till the image is clear



4. Wear the earphone

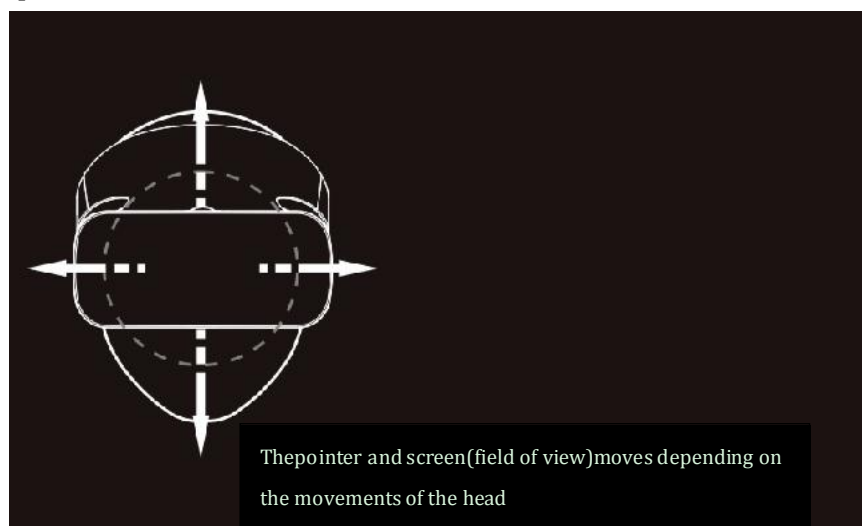


## 5. Remote control



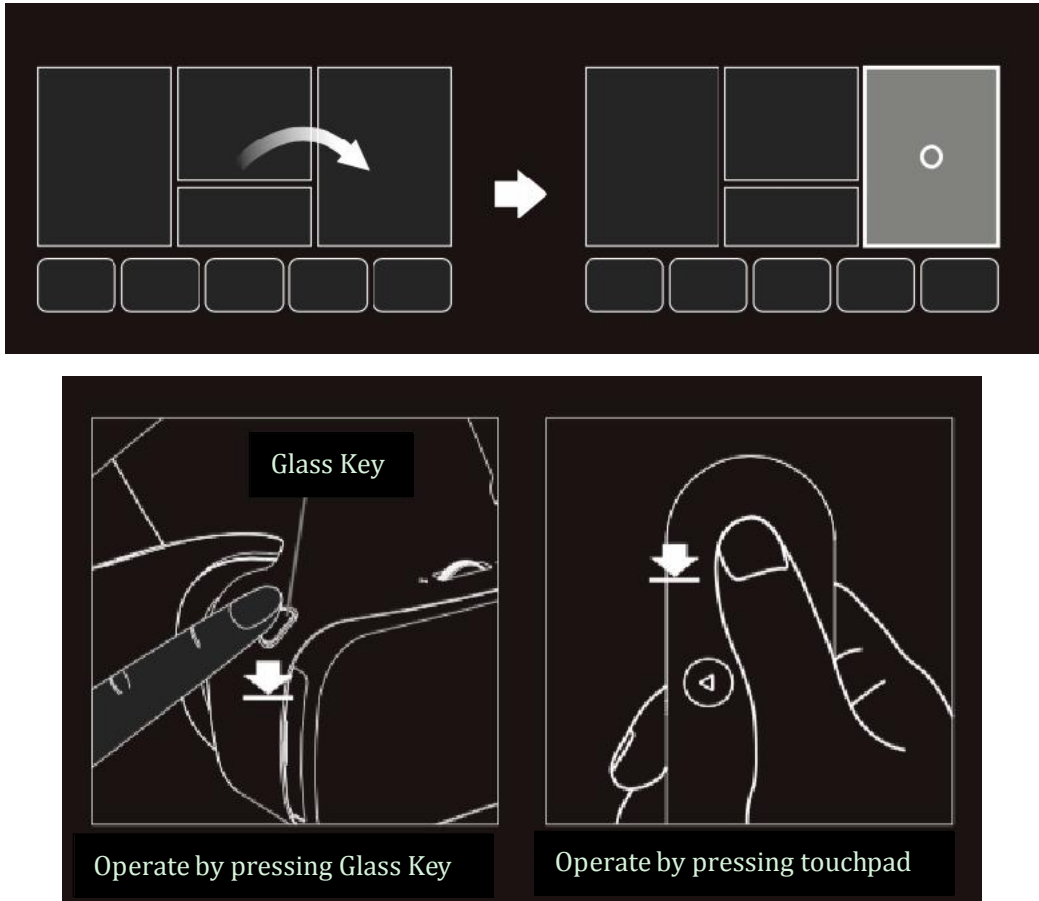
## Start exploring

### 1. Move pointer or screen



## 2. Select and confirm

Move your head to place the displayed pointer onto a desired selection, press the Glass Key or press touchpad of remote control to complete the selection



## 3. Universal Menu

At any time, press and hold Glass Key or Home Key on remote control to access Universal Menu in which you can get back to Home Screen, configure setting, check notification, review download status etc.

## 4. Answer and end calls

- 1) When the phone calls, the screen will pop up with the calling-in notification, you can remove your phone from Mi Glass and answer the call.
- 2) By selecting “Hands-Free answer” in calling-in notification, you can use speaker of the phone the answer the call, when there is earphone with microphone function plugged in, answer the call through earphone
- 3) You can also reject the phone call in calling-in notification

FCC:

This device complies with part 15 of the FCC Rules.

Operation is subject to the following two conditions:



This device may not cause harmful interference, and  
This device must accept any interference received,  
including interference that may cause undesired operation.

RF exposure warning:

The equipment complies with FCC RF exposure limits  
set forth for an uncontrolled environment.

The equipment must not be co-located or operating in  
conjunction with any other antenna or transmitter.

Product name: XiaoMi VR Glass.

Product Number: MiV1

Manufacturer: Shanghai MeetVR Tech. Co., Ltd

Address: 4F, No.14, Caohejing High-tech Park, No.518Xinzhuan Rd, Songjiang  
District, Shanghai

Welcome visiting XiaoMi service net <http://fuwu.mi.com>

Or call XiaoMi phone Number 400-100-5678