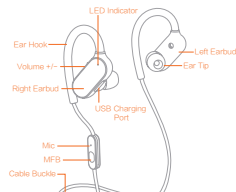




Xiaomi Bluetooth Headset
User Manual

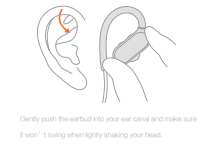
Getting Started

1 Choose between ear tips in different sizes



Normally, the medium ear tips are suitable for most people, so we suggest that you start trying on with the medium ones.

2 How to wear

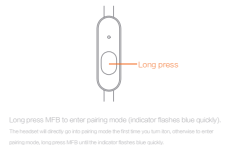


Verify push the earbud into your ear canal and make sure it won't swing when lightly shaking your head.



For optimal voice clarity, put the mic close to your mouth.

3 Pairing with mobile phone

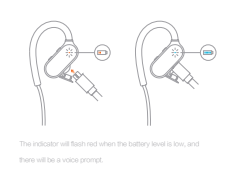


Long press MFB to enter pairing mode (indicator flashes blue quickly). The headset will flash on the pairing mode faster than you can see, otherwise it enter pairing mode. Long press MFB until the indicator flashes blue quickly.



Activate the Bluetooth function of your mobile phone, search for "Xiaomi Bluetooth headset" and click it to connect.

Charging the headset



The indicator will flash red when the battery level is low, and there will be a voice prompt.

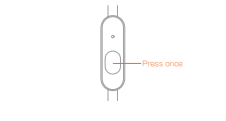


During charging, long press MFB until the indicator flashes red and blue alternately.

General Functions

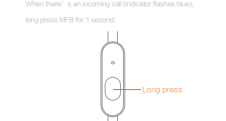
Answer a call

When there is an incoming call (indicator flashes blue), press MFB once.



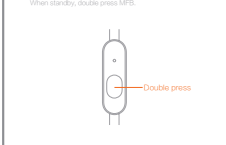
Reject a call

When there is an incoming call (indicator flashes blue), long press MFB for 1 second.



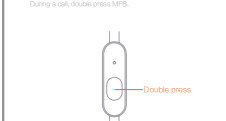
Redial last number

When standby, double press MFB.



Mute

During a call, double press MFB.



Multi-point Connection

1. Follow the pairing procedure to connect the headset to Phone 1 and turn off the headset.
2. Turn on the headset and enter pairing mode again. Activate the Bluetooth function of Phone 2 and search for the headset. Select the name of headset on the device list and click it to connect.



3. Select the name of headset on the device list of Phone 1 and click it to finish multi-point connection.



Multiple call handling

When you are already on a call, if there is an incoming call on the other phone, press MFB to answer the 2nd call and put the 1st call on hold. You can switch between the two calls by double pressing MFB.

Play/Pause

Press MFB when playing music.

Activate voice

Press MFB for 1 second.

Transfer voice between headset and phone

During a call, long press MFB for 1

Product Features

- V4.1 Bluetooth version, compatible with over 99% of mobile phones and tablets
- CSR Bluetooth chip, ensuring optimal Bluetooth performance
- Rear-wearing ear hooks, more suitable for working out
- APT-X audio codec, providing CD-level sound quality

Basic Parameters
 Model: YDVEJ01LM Product Name: Xiaomi Bluetooth headset
 Noise Reduction: CVC Charging Time: 2 hours
 Bluetooth Version: V4.1 Standby Time: 280 hours
 Operating Range: 10m Dimension: 27 × 29 × 30mm
 Music Time: 7 hours Weight: 17g Bluetooth Profile: HSP/A2DP/HSR/A2RCP

For after-sales service, please contact customer service of Xiaomi.
Phone: 400-100-5678

Online service: www.mi.com/service
Manufacturer: Dajiang Science & Technology Co., Ltd.
Address: No. 1, Shuangliu Road, Xitong Park, Haidian District, Beijing
Date: December 10, 2019

Warranty Card

Warranty period:
 Warranty period is at least 12-month warranty applies to our products.
 Free service:
 Under warranty, if there are any malfunctions caused by manufacturing defects, please contact our dealers to enjoy free maintenance. You will always need the Warranty Card and any receipt or other proof of purchase to claim warranty.
 Free maintenance is available under the following circumstances:
 1. Without Warranty Card and related maintenance label
 2. Damage caused by improper disassembly or repair
 3. Damage resulting from liquid or shipping, and other artificial mechanical defects
 4. Damage caused by any force majeure

Part Name	Hazardous Substances					
	(Pb)	(Hg)	(Cd)	(Co)	(Cr)	(PBDE)
Case body	X	0	0	0	0	0
Battery	0	0	0	0	0	0
Ear tips	0	0	0	0	0	0
Charging port	0	0	0	0	0	0
Earhook	X	0	0	0	0	0

(X) shows the content of hazardous substances in the homogeneous materials of corresponding part is within the limitation stipulated in Requirements for Concentration Limits for Certain Hazardous Substances in Electronic Information Products (SJ/T 11363-2009).
 (0) shows the content of hazardous substances in at least a certain homogeneous material of corresponding part is beyond the limitation stipulated in Requirements for Concentration Limits for Certain Hazardous Substances in Electronic Information Products (SJ/T 11363-2009).

"Three Guarantees" Services

According to Law of the PRC on the Protection of the Rights and Interests of Consumers and Product Quality Law of the PRC, Xiaomi provides "three guarantees" for the repair, replacement or return of our products. The relevant terms are as follows:
 Within the validity period of "three guarantees", you can claim repair, replacement or return of the product with your receipt of purchase presented.
 1. Within 7 days from the date you sign for the product, if any performance fault on the below Performance Faults List occurs, after being inspected and confirmed by After-sales Service Center of Xiaomi, you can claim return or replacement of product free of charge depending on your choice.
 2. Within 15 days from the date you sign for the product, if any performance fault on the below Performance Faults List occurs, after being inspected and confirmed by After-sales Service Center of Xiaomi, you can claim repair or replacement of product free of charge depending on your choice.
 3. Within 12 months from the date you sign for the product, if any performance fault on the below Performance Faults List occurs, after being inspected and confirmed by After-sales Service Center of Xiaomi, you can claim repair of product free of charge depending on your choice.

Performance Faults List

Product Name	Performance Faults
Bluetooth Headset	1. No sound can be heard from the headset. 2. Can not be heard by the other when on a call. 3. The headset can not be charged.

Tips

- Before using the headset, please read the manual carefully and keep it for future reference.
- The headset need to be fully charged prior to first-time use.
- If the headset is left unused for over three months, please recharge it periodically.
- Use only chargers made by qualified manufacturer and passed China Compulsory Certification.
- If the headset cannot be searched by your phone, please check whether it is in pairing mode. If not connected for a long while, the headset will exit pairing mode, please re-enter the mode. If a procedure error of your phone occurs, reboot it a procedure error of the headset occurs, reboot or reset it.

Safety Rules

- Never disassemble or modify your headset for any reasons to avoid any damages and danger.
- Do not store the headset in extreme temperatures (under 0°C or over 45°C).
- Avoid using the indicator close to the eyes of children or animals.
- Do not use this headset during a thunderstorm to avoid regular function and increased risk of electric shock.
- Do not use harsh chemicals or strong detergents to clean the headset.
- Keep the headset dry.

This device complies with part 15 of the FCC rules. Operation is subject to the following two conditions:

- (1) this device may not cause harmful interference, and
- (2) this device must accept any interference received, including interference that may cause undesired operation.

Changes or modifications to this unit not expressly approved by the party responsible for compliance could void the user's authority to operate the equipment.

For more information about our products, please visit www.mi.com