

NetDisk™

Installation Guide



NetDisk Installation Guide

XiMeta, Inc.
Irvine, California

Copyright © 2003, All rights reserved. Reproduction in any manner or translation without prior written permission of XiMeta, Inc. is strictly prohibited.

Warranty

XiMeta, Inc. reserves the right to revise this publication and to make changes to the content hereof without the obligation of XiMeta, Inc. to notify any person of such revision or changes. XiMeta, Inc. provides this publication “as is” without warranty of any kind, either express or implied, including but not limited to the implied warranties of merchantability or fitness for a particular purpose.

FCC Compliance Statement

Any changes or modifications not expressly approved by the party responsible for compliance could void the user's authority to operate the equipment.

INFORMATION TO USER

This equipment has been tested and found to comply with the limits of a Class B digital device, pursuant to Part 15 of the FCC Rules.

These limits are designed to provide reasonable protection against harmful interference in a residential installation.

This equipment generates, uses and can radiate radio frequency energy and, if not installed and used in accordance with the instructions, may cause harmful interference to radio communications. However, there is no guarantee that interference will not occur in a particular installation.

If this equipment does cause harmful interference to radio or television reception, which can be determined by turning the equipment off and on, the user is encouraged to try to correct the interference by one or more of the following measures:

- Reorient Relocate the receiving antenna
- Increase the separation between the equipment and receiver.
- Connect the equipment into an outlet on a circuit different from that to which the receiver is connected.
- Consult the dealer or an experienced radio/TV technician for help.

License

The software described in this document is furnished under a license agreement. The software may be used only in accordance with the terms of the license agreement.

All trademarks are the property of their respective owners.

Congratulations on your purchase of the NetDisk Network Direct Attached Storage Solution.

This NetDisk Installation Guide is intended to help you install the product quickly and easily.

The NetDisk Installation Guide is intended for individual users who need to install and support one or more NetDisk on their PC's and network. The NetDisk Installation Guide assumes a basic understanding of PC's and networks.

Please follow these instructions to setup your NetDisk on your network so you can begin using it immediately.

Models Covered By This Guide

This NetDisk Installation Guide includes information on the following models:

- NDU10-80
- NDU10-120
- NDU10-160

Package Contents



NetDisk



Quick Install Guide



Software Installation
CD-ROM



Ethernet Cable



USB Cable



Power Adapter and Power Cord

Table of Content

Preface	3
Network Requirements	
Wired Network Users	5
Wireless Network Users	5
USB Users	5
Software Requirement	5
Hardware Installation	
Installation for Network Users	6
Installation for Cross-wired Ethernet Users	7
Installation for USB Users	8
Software Installation	9
NetDisk™ Registration	12
NetDisk™ Mode	
Read/Write (RW)	15
Read Only (RO)	20
Installation of New NetDisk	26
Add NetDisk	28
Change READ ONLY to READ/WRITE	30
Change READ/WRITE to READ ONLY	32
Aggregation	
Bind	33
Unbind	40
Mirroring	
Mirroring	43
Undo Mirroring	51
Partition NetDisk	52
Initialize NetDisk	57
NetDisk Uninstall	59
Trouble Shooting	60
Contact Information	62

Network Requirements

Wired Network Users

Fast Ethernet LAN (100BASE-T / 802.3u)

- 100 mbps or higher is recommended for best data transfer rate.

Wireless Network Users

Wi-Fi WLAN (802.11a or 802.11g)

- 54 Mbps or higher is recommended for best data transfer rate.

USB Users

- USB 2.0 or higher is recommended for best data transfer rate.

Software Requirement

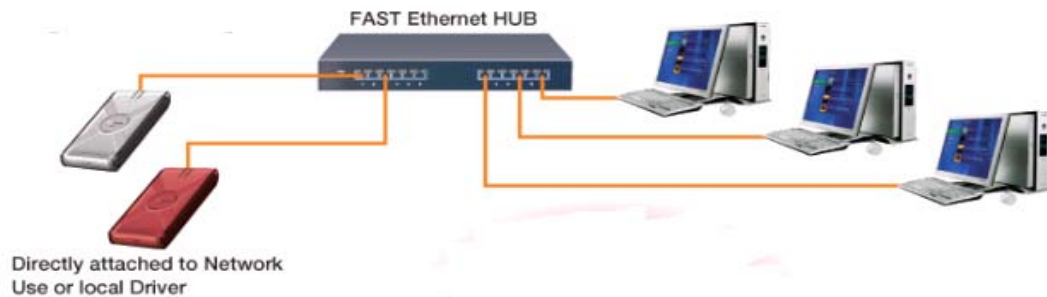
- NetDisk software supports Windows 2000/XP.
- Windows 2000 users should install USB 2.0 driver if it is not installed already. The driver is included on the NetDisk CD.

Hardware Installation

Installation for Network Users

To use NetDisk as Network Direct Attached Storage via Ethernet connection:

1. Connect Power Adapter to NetDisk™ and plug Power Cord into the power outlet.
2. Connect one end of the Ethernet LAN Cable into Hub or Router, the other end into NetDisk LAN Interface (RJ45Jack).
3. Once the NetDisk is connected to the LAN, the LED will light up indicating power and data traffic.
4. To add more NetDisk, please repeat steps 1 - 3. You can add as many Net Disk's as your Hub or Router has ports.
5. Toggle switch on NetDisk should be on Ethernet. Toggle switch is located next to USB port.



Installation for Cross-wired Ethernet Users

To use NetDisk as NetDisk Direct Attached Storage via Ethernet connection:

1. Connect Power Adapter to NetDisk™ and plug Power Cord into the power outlet.
2. Connect one end of the Cross-wire Cable into the PC's Ethernet port and the other end into the NetDisk Ethernet port.
3. Toggle switch on NetDisk should be on Ethernet. Toggle Switch is located next to USB port.
4. Once the NetDisk is connected to USB, the LED will light up indicating power and data traffic.

Installation for USB Users

To use NetDisk as USB 2.0 External Hard Disk Drive:

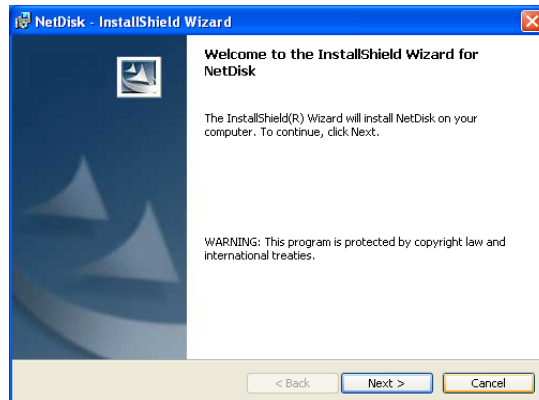
1. Connect Power Adapter to NetDisk™ and plug Power Cord into the power outlet.
2. Connect one end of the USB Cable into the PC's USB port and the other end into the NetDisk USB port.
3. Toggle switch on NetDisk should be on USB. Toggle Switch is located next to USB port.
4. Once the NetDisk is connected to USB, the LED will light up indicating power and data traffic.

Software Installation

A. Insert the **Software Installation CD-ROM** included in the box into the CD ROM drive.



B. **Welcome to the InstallShield Wizard for NetDisk** will appear on the screen. Click **Next**.

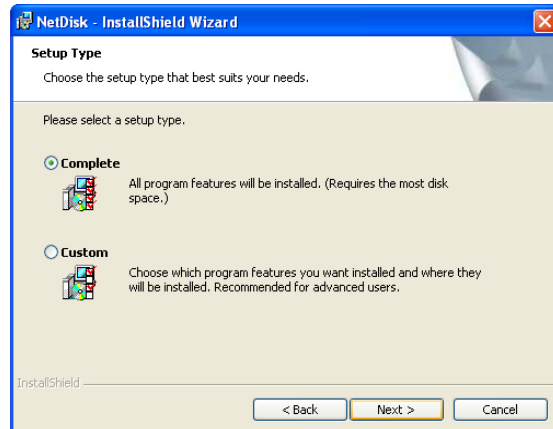


C. **License Agreement** will appear on the screen. Select **I accept the terms in the license agreement** then click **Next**.

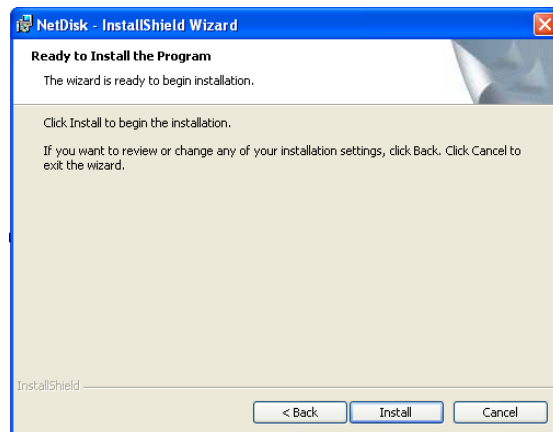


D. Setup Type:

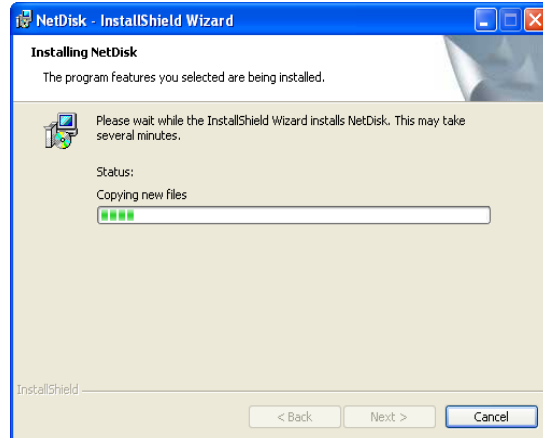
- a. General Users - Select **Complete** and then click **Next**.
- b. Advanced Users - Select **Custom** and then click **Next**.



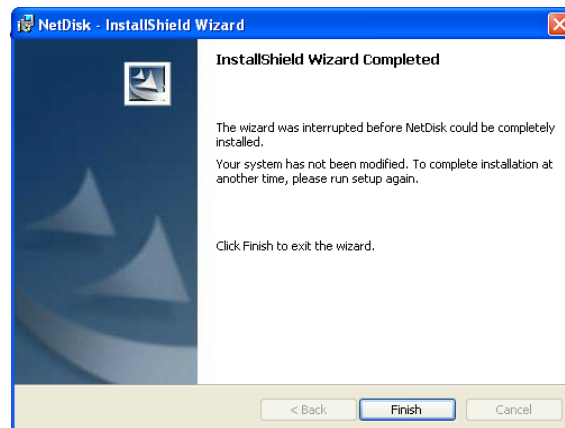
E. Ready to Install the Program will appear on the screen. Click **Install**.



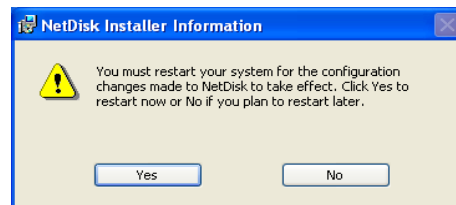
F. InstallShield Wizard is being installed.




G. Installation is completed. Click **Finish**.

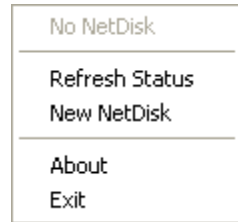


H. You must restart your computer for the changes to take effect. Click **Yes**.



NetDisk™ Registration

1. Click **NetDisk™ Administrator Tool** Icon  located on the bottom right corner of your screen. A menu box, just like the one below, will appear:



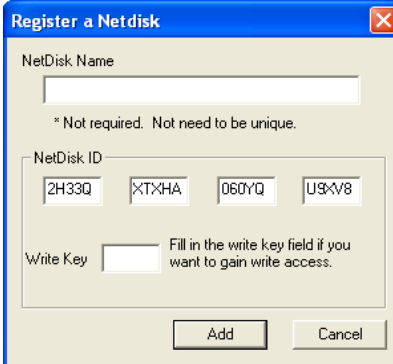
2. Click **New NetDisk**.
3. **Register a NetDisk**: Enter NetDisk ID. NetDisk Name is optional.

NetDisk ID and **Write Key** can be found on the bottom of the NetDisk.

NOTE: Write Key is needed for **Read/Write** access to NetDisk. **Read/Write** allows users to write and read to and from NetDisk.

Add button will be enabled only when the right NetDisk ID is entered.

Click **Add**.

A dialog box titled "Register a Netdisk" with a blue header bar and a close button (X) in the top right corner. The dialog has a light beige background. It contains a "NetDisk Name" label followed by a text input field. Below this is a note: "* Not required. Not need to be unique." Then, there is a "NetDisk ID" label followed by four small text input fields containing the characters "2H33Q", "XTXHA", "060YQ", and "U3XV8". Below these is a "Write Key" label followed by a text input field. To the right of the "Write Key" field is a note: "Fill in the write key field if you want to gain write access." At the bottom of the dialog are two buttons: "Add" and "Cancel".

4. **NetDisk Administrator** window will appear confirming the NetDisk you just registered.

NOTE: If another user has **Read/Write** privilege of the NetDisk you just registered, you will be registered as **Read Only** even if you entered the **Write Key**. You can later switch to **Read/Write** by following the **Change READ ONLY to READ/WRITE** on 30.

- i. If the **Write Key** was entered in the previous step, the NetDisk is

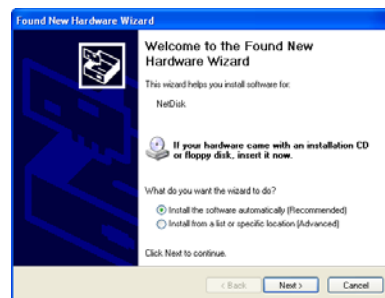
registered as **Read/Write**.



- ii. If the **Write Key** was not entered in the previous step, the NetDisk is registered as **Read Only**.



5. Found New Hardware Wizard:



If you are registering a new NetDisk, **Found New Hardware Wizard** will appear. See **Installation of New NetDisk** on 26 and follow the instructions.

If you are re-registering a NetDisk that has been removed before, **Found Hardware Wizard** may not appear. Just continue to the next step.

- 6. Registration is completed. Click **NetDisk™ Administrator Tool**  to see the registered NetDisk.

- i. NetDisk with **Read/Write** mode.



- ii. NetDisk with **Read Only** mode.



NetDisk™ Mode

Once NetDisk is successfully installed, you will be able to **Read Only** or **Read/Write** to NetDisk. Write privilege is given by entering the **Write Key** during the registration step.

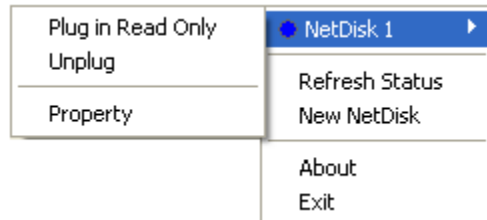
To access NetDisk, click **NetDisk™ Administrator Tool** .

1. **Read/Write** – Read/Write mode is indicated by a **Blue Circle**.



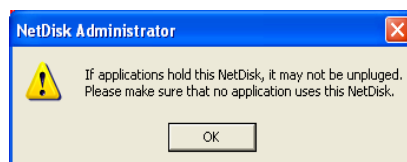
NOTE: **White** circle means the NetDisk is being used by someone else. A **White** NetDisk has same functionalities as a **Gray** NetDisk.

- A. **NetDisk** - Place the cursor on the word NetDisk to view the functions.



- i. **Plug in Read Only** - Enables you to change NetDisk mode from **Read/Write** to **Read Only**.
- ii. **Unplug** - Disables writing and reading to and from NetDisk.

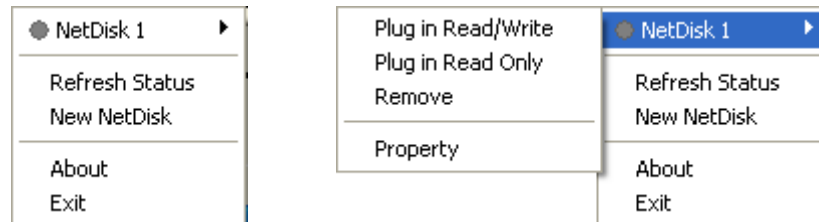
When you select Unplug, a warning window will appear. Click **Ok**.



If the NetDisk is being used by any applications, NetDisk will not be unplugged. In this case, wait until all the applications are finished using NetDisk. Then try unplugging it again.

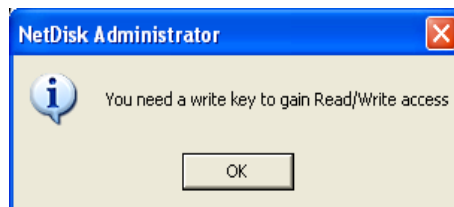
NOTE: If you still cannot unplug after several attempts, reboot your computer. This may occur when unseen programs are still using the NetDisk.

Unplugged NetDisk is indicated by **Gray Circle**.



- a. Once a NetDisk is unplugged, NetDisk can be enabled back to **Read Only** or **Read/Write** by selecting **Plug in Read Only** or **Plug in Read/Write**.

NOTE: If you are enabling **Read/Write** and did not enter **Write Key** in previous registration, the system will ask you to enter **Write Key**.



Click **Ok**.

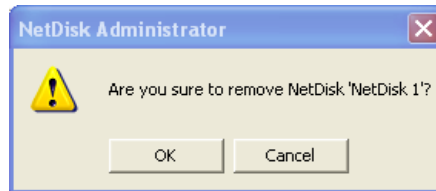
- b. **Edit a NetDisk** will appear.

Enter the correct **Write Key**, then click **Ok**.



- c. From unplugged mode, NetDisk can also be removed using **Remove**.

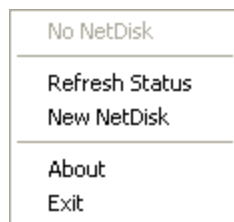
When you click **Remove**, warning window will appear. If you want to continue removing NetDisk click **OK**.



To check whether the NetDisk has been removed, click **NetDisk™ Administrator Tool** .

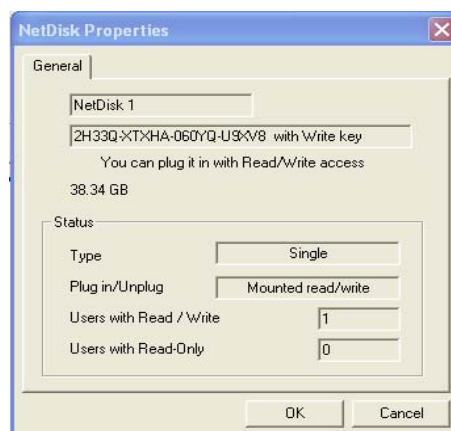
The removed NetDisk will be no longer visible.

The word **No NetDisk** indicates that there is no NetDisk registered in your computer.



NOTE: If you want to add a NetDisk, see **NetDisk™ Registration** on 12.

- iii. **NetDisk Properties** - Display properties of NetDisk.



- B. **Refresh Status** - Updates the status of NetDisk that are connected to the network.

NOTE: If a NetDisk gets displayed by **black** colored NetDisk, it means network cable or power cable of the NetDisk is disconnected. This will cause operations of other NetDisk to be slowed down. We recommend you remove the **Black** NetDisk and re-register.

- C. **New NetDisk** – Registers new NetDisk to your computer.

A Windows-style dialog box titled "Register a Netdisk". It contains a text field for "NetDisk Name" with a note below it: "* Not required. Not need to be unique." Below that is a "NetDisk ID" section with four small text boxes. At the bottom is a "Write Key" text box with a note: "Fill in the write key field if you want to gain write access." There are "Add" and "Cancel" buttons at the bottom right.

Enter NetDisk ID if you want to just read from NetDisk.

Enter both NetDisk ID and **Write Key** if you want to gain **Read/Write** access of NetDisk.

Once you register the NetDisk, **NetDisk Administrator** will appear confirming the registered NetDisk.

- i. If the **Write Key** was entered, the NetDisk is registered as **Read/Write**.



- ii. If the **Write Key** was not entered, the NetDisk is registered as **Read Only**.



If you are registering a new NetDisk, **Found New Hardware Wizard** will appear. See **Installation of New NetDisk** on 26 to complete the registration.

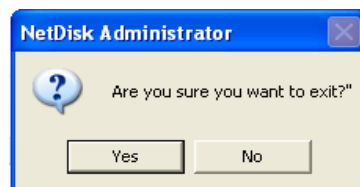


D. **About** - Displays NetDisk Administrator version.



E. **Exit** - Exit NetDisk Administrator.

Click **Yes** if you want to exit. Otherwise, click **No**,



NetDisk Administrator on

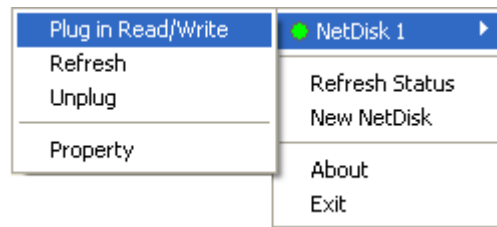
NetDisk Administrator can be restored by double clicking the screen.

2. **Read Only** - Read Only mode is indicated by a **Green Circle**.



NOTE: **White** circle means the NetDisk is being used by someone else. A **White** NetDisk has same functionalities as a **Gray** NetDisk.

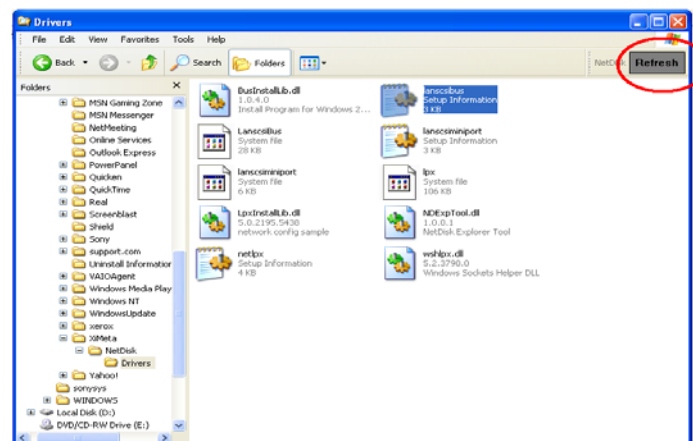
A. **NetDisk** - Place the cursor on the word NetDisk to view the functions.



- i. **Plug in Read/Write** - Enables you to change NetDisk mode from **Read Only** to **Read/Write**.
- ii. **Refresh** - Updates the NetDisk's data you are reading.

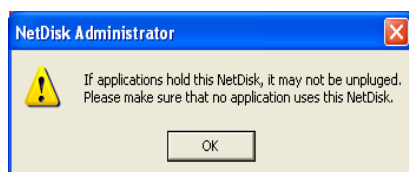
You can find the same **Refresh** button on the Windows Explorer. It has the same functionality as the **Refresh** on the **NetDisk Administrator Tool**.

If you cannot see it, click **View > Toolbars > NetDisk Tool**.



- iii. **Unplug** - Disables writing and reading to and from NetDisk.

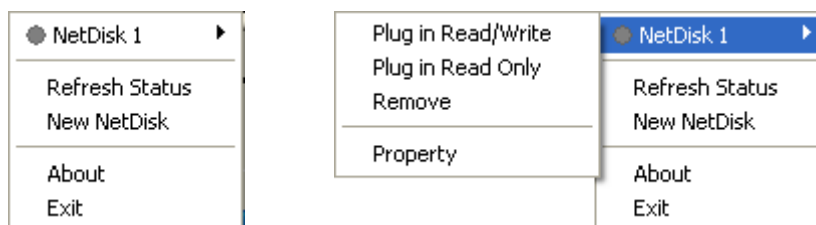
When you select Unplug, a warning window will appear. Click **Ok**.



If the NetDisk is being used by any applications, NetDisk will not be unplugged. In this case, wait until all the applications are finished using NetDisk. Then try unplugging it again.

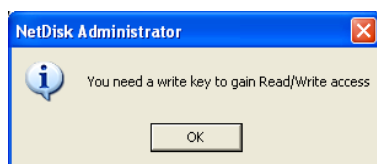
NOTE: If you still cannot unplug after several attempts, reboot your computer. This may occur when unseen programs are still using the NetDisk,

Unplugged NetDisk is indicated by **Gray Circle**.



- a. Once a NetDisk is unplugged, NetDisk can be enabled back to **Read Only** or **Read/Write** by selecting **Plug in Read Only** or **Plug in Read/Write**.

NOTE: If you are enabling **Read/Write** and did not enter **Write Key** in previous registration, the system will ask you to enter **Write Key**.



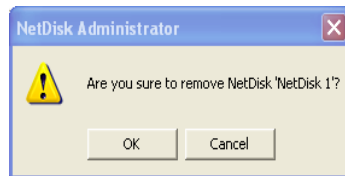
Click **Ok**.

Edit a NetDisk will appear. Enter the correct **Write Key**, then click **Ok**.



- b. From Unplugged mode, NetDisk can also be removed using **Remove**.

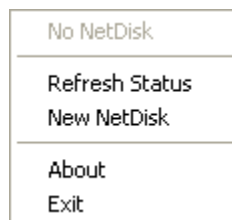
When you click **Remove**, warning window will appear. If you want to continue removing Net Disk, click **Ok**.



To check whether the NetDisk has been removed, click **NetDisk™ Administrator Tool** .

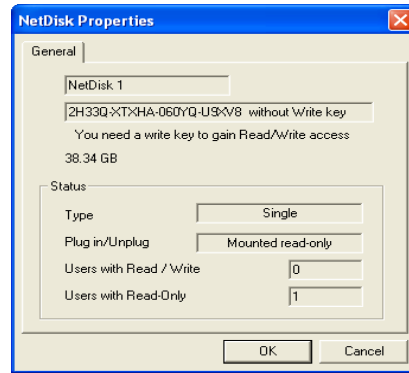
The removed NetDisk will be no longer visible.

The word **No NetDisk** indicates that there is no NetDisk registered in your computer.



NOTE: If you want to add a NetDisk, see **NetDisk™ Registration** on 12.

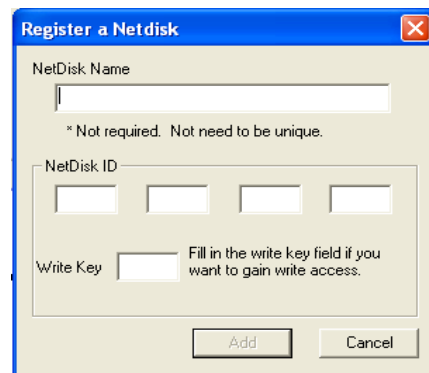
- iii. **NetDisk Properties** - Display properties of NetDisk.



- B. **Refresh Status** - Updates the status of NetDisk that are connected to the network.

NOTE: If a NetDisk gets displayed by **black** colored NetDisk, it means network cable or power cable of the NetDisk is disconnected. This will cause operations of other NetDisk to be slowed down. We recommend you remove the **Black** NetDisk and re-register.

- C. **New NetDisk** – Registers new NetDisk to your computer.



Enter NetDisk ID if you want to just read from NetDisk.

Enter both NetDisk ID and **Write Key** if you want to read and write to NetDisk.

NetDisk Administrator will appear, confirming the registered NetDisk.

- i. If the **Write Key** was entered, the NetDisk is registered as **Read/Write**.



- ii. If the **Write Key** was not entered, the NetDisk is registered as **Read Only**.



If you are registering a new NetDisk, **Found New Hardware Wizard** will appear. See **Installation of New NetDisk** on 26 to complete the registration.

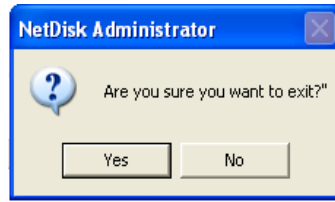


- D. **About** - Displays NetDisk Administrator version.



- F. **Exit** - Exit NetDisk Administrator.

Click **Yes** if you want to exit. Otherwise, click **No**,



NetDisk Administrator

NetDisk Administrator can be restored by double clicking on the screen.

COMMENT:

For Windows 2000 users.

Whether you are in a **Read/Write** mode or **Read Only** mode, Windows 2000 will allow you to write to the NetDisk. However, by now, you know that you can only write to NetDisk if you are in **Read/Write** mode.

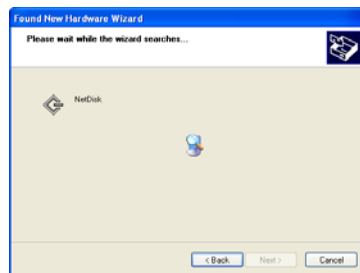
If you are writing to the NetDisk with **Read Only** mode, you are not actually writing the data to the NetDisk but writing it to your computer's memory. The data you entered will get lost as soon as the computer gets re-started or turned off. So if you want to modify or add data to the NetDisk please check that you are in **Read/Write** mode.

Installation of New NetDisk

- A. **Found New Hardware Wizard** will appear. Select **Install the software automatically** and click **next**.



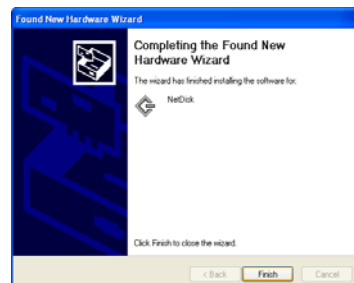
- B. Searching for the new NetDisk.



- C. **Hardware Installation** warning will appear. Click **Continue Anyway**.




- D. Installation is completed. Click **Finish**.



E. New NetDisk has been added to your computer. To view it, click **My Computer** and see under Hard Disk Drive.

Add NetDisk

1. Add more NetDisk.

- A. Click **NetDisk™ Administrator Tool**  and then click **New NetDisk**. Fill in the NetDisk ID. NetDisk Name is optional. **Write Key** is needed to write on NetDisk.



The "Register a Netdisk" dialog box has a blue title bar with a close button. It contains three input fields: "NetDisk Name" (a single line), "NetDisk ID" (four separate boxes for each digit), and "Write Key" (a single line). Below the "NetDisk Name" field is the text "* Not required. Not need to be unique." To the right of the "Write Key" field is the text "Fill in the write key field if you want to gain write access." At the bottom are "Add" and "Cancel" buttons.

Click **Add**.

- i. If the **Write Key** was entered, the NetDisk is registered as **Read/Write**.



- ii. If the **Write Key** was not entered, the NetDisk is registered as **Read Only**.



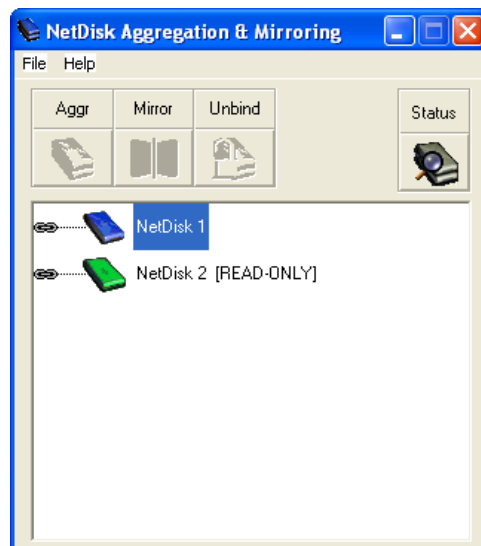
- B. If you are adding a new NetDisk **Found New Hardware Wizard** will appear. Otherwise, continue to the next step.

See **Installation of New NetDisk** on 26.



2. Go to the **NetDisk Aggregation & Mirroring** window.

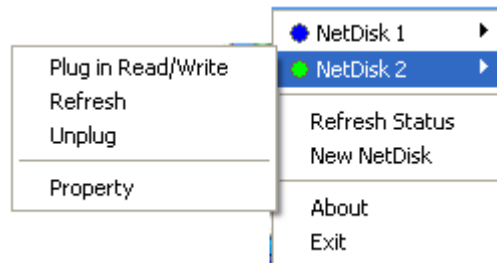
If you do not see all the NetDisk you registered, click **Refresh**.



Change READ ONLY to READ/WRITE

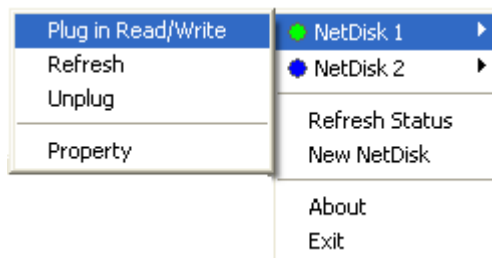
To access **NetDisk**, click **NetDisk™ Administrator Tool** .

A. Select a NetDisk you want to change.



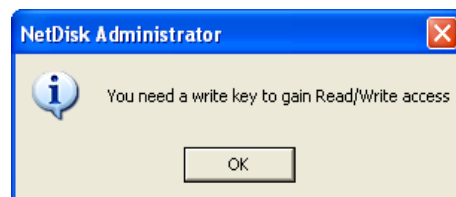
NOTE: Green Circle indicates **Read Only** and **Blue Circle** indicates **Read/Write**.

B. Click **Plug in Read/Write**.



If **Write Key** has not been entered during the registration, warning window will appear.

NOTE: Remember, you need a **Write Key** to write on NetDisk.



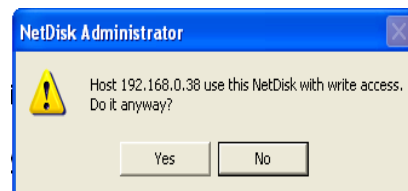
Click **OK**.

C. **Edit a NetDisk** will appear. Enter **Write Key**.



NOTE: If the correct **Write Key** is entered **OK** button will be enabled, if incorrect **Write Key** is entered **Cancel** button will be enabled.

- D. If another user has already registered NetDisk as **Read/Write**, their write privilege will be taken away from him/her and given to you. Click **Ok**, if you want to access write privilege.



- E. Click **NetDisk™ Administrator Tool**  to view the changed NetDisk.



NOTE: If the circle is still **Green**, repeat from step 1.

Change READ/WRITE to READ ONLY

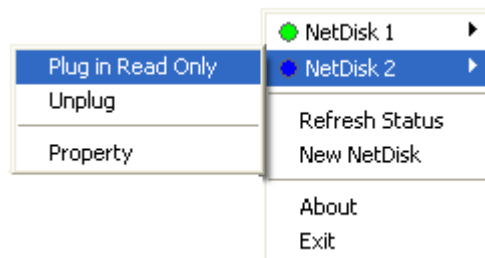
To access **NetDisk**, click **NetDisk™ Administrator Tool** .

A. Select a NetDisk you want to change.



NOTE: Green Circle indicates **Read Only** and Blue Circle indicates **Read/Write**.

B. Click **Plug in Read Only**.



C. Click **NetDisk™ Administrator Tool**  to view the changed NetDisk.



NOTE: If the circle is still **Blue**, repeat from step 1.

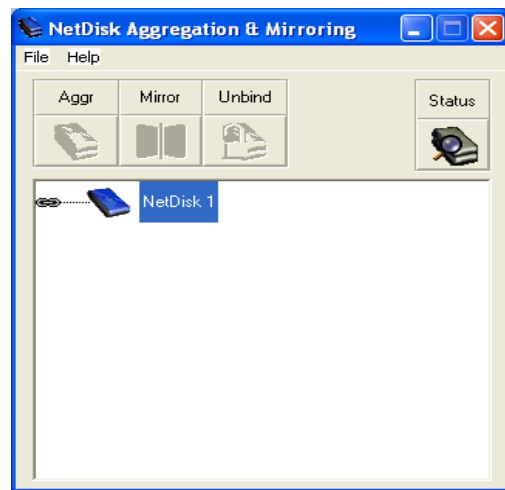
Aggregation - Bind

In order to bind two NetDisk, each NetDisk has to be **unplugged** and have a **Write Key**. Detailed explanation of unplugging and Write Key are listed in the steps below.

The purpose of Aggregation is to enable multiple NetDisk units to be recognized as a single large disk drive. This function is extremely useful where a large storage device is needed.

NOTE: You cannot unplug a NetDisk that is currently being used by someone else. Occupied NetDisk will be indicated by **white** colored NetDisk.

1. Click **Start > Program > NetDisk > NetDisk Aggregation & Mirroring**




NetDisk Aggregation & Mirroring window displays all the NetDisk installed and registered in your computer.







Binding can proceed only if two or more NetDisk are registered in the computer.

NOTE: Only two NetDisk can be bound at a time.

If two or more NetDisk are listed on the **NetDisk Aggregation & Mirroring** window, continue to the next step. Otherwise, go to **Add NetDisk** on 28 to add more NetDisk.

NOTE: Different color NetDisk indicates different mode.

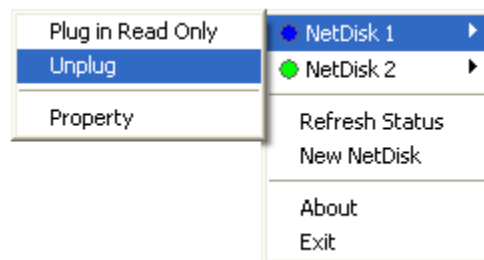
Blue Disk:  Read/Write

Green Disk:		Read Only
Red Disk:		Different Company's Disk (Cannot be used)
Gray Disk:		Unplugged from your computer (Still connected to Network)
White Disk:		Someone else is using the NetDisk (Cannot Aggregate or Mirror NetDisk)
Black Disk:		Not connected to the network
Yellow Disk		Slave disk (Used for Aggregation and Mirroring)

- Before binding the NetDisk, the NetDisk must be unplugged.

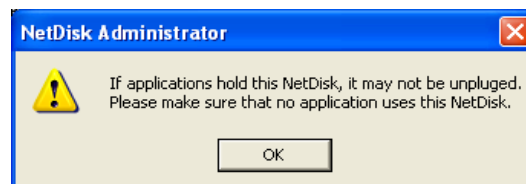
NOTE: Only two NetDisk can be bound at a time. Therefore, unplug the two NetDisk you want to bind.

To unplug NetDisk, click **NetDisk™ Administrator Tool** . Then select a NetDisk and unplug it by selecting **Unplug**.



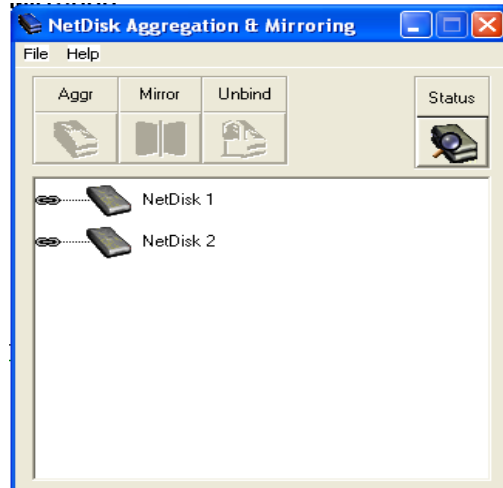
- NetDisk Administrator** will appear.

NOTE: If the NetDisk is being used by any applications, NetDisk will not be unplugged. In this case, wait until all the applications are finished using NetDisk. Then try unplugging it again.



Click **Ok**.

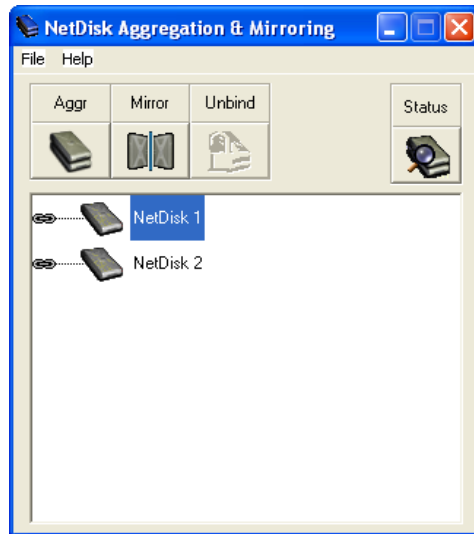
4. Repeat the above two step for the second NetDisk you want to unplug.
5. Now that two NetDisk are unplugged, you will be able to bind them.
6. If **NetDisk Aggregation & Mirroring** window is not opened, click **Start > Program > NetDisk > NetDisk Aggregation & Mirroring**



NOTE: Both NetDisk are unplugged. Indicated by the **Gray** colored NetDisk.

If the color of the NetDisk has not been changed to **Gray**, click **Status**. If the color of the disk is still **Green** or **Blue**, repeat steps 2 and 3 for every NetDisk that has not been unplugged.

7. Once two NetDisk have been unplugged, binding can begin.
8. Select a NetDisk you would like to bind. Once you select a NetDisk, **Aggregation-bind** and **Mirroring** buttons will be enabled.

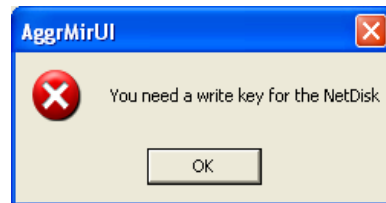


NOTE: Remember you can only bind NetDisk that is unplugged. If you choose a NetDisk that is still plugged, **Aggregation** button will not be enabled.

9. Click bind  button.

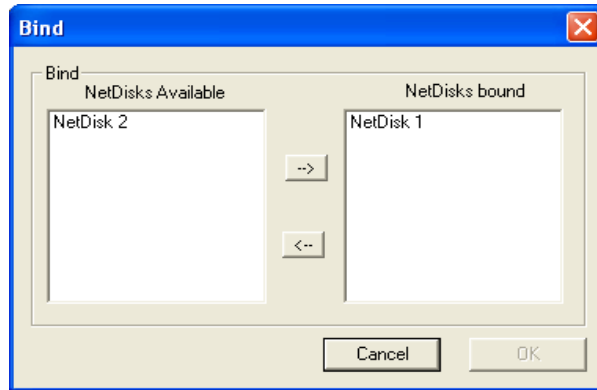
- i. If NetDisk you choose does not have a **Write Key**, the following message will appear.

NOTE: Remember NetDisk has to be **unplugged** and have a **Write Key**.



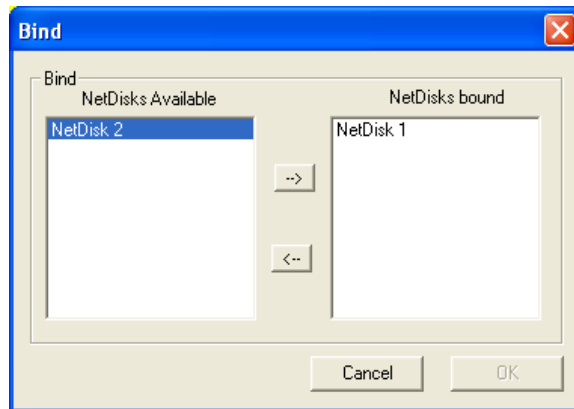
Click **Ok** then go to page 30 and do **Change READ ONLY to READ/WRITE**.

- ii. If NetDisk you chose has a **Write Key**, the **Bind** window will appear.



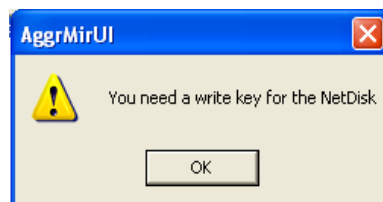
NOTE: The **NetDisks bound** box on the right, indicates the first NetDisk you chose to bind. The **NetDisks Available** box on the left, lists all the NetDisk you can choose from to bind with the first NetDisk.

10. Select a NetDisk from the **NetDisk Available** box that you want to bind.



11. Then click  button.

A. If NetDisk you selected from **NetDisks Available** box does not have a **Write Key**, this message window will appear.



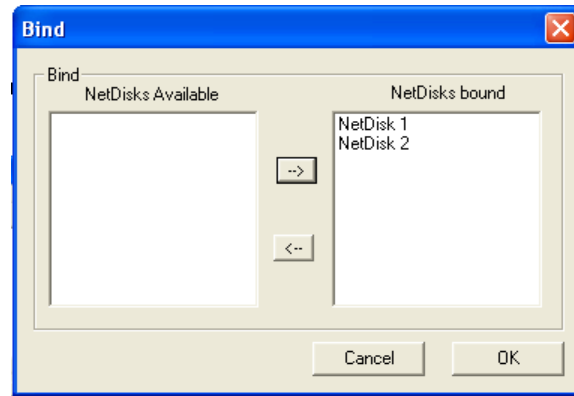
Click **Ok**.

Click **cancel** on the **Bind** window.

Go to page 30 and do **Change READ ONLY to READ/WRITE**.

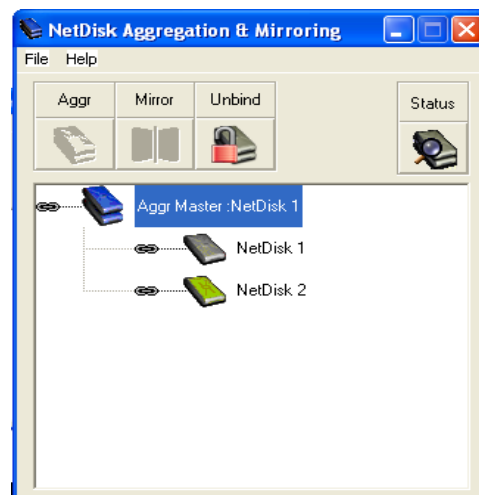
Go back to step 9 and start again.

- B. If NetDisk you selected has **Write Key**, the binding of these two NetDisk will proceed.



Click **Ok**.

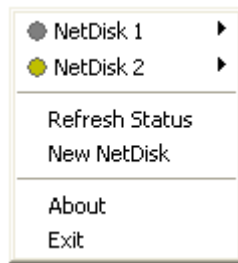
12. Binding is completed.



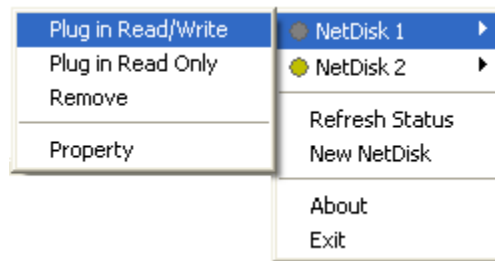
NOTE: The bound NetDisk is indicated by the word **Aggr Master:** **NetDisk 1**. The NetDisk from the **NetDisks bound** box becomes the **Master** NetDisk and the NetDisk from the **NetDisks available** box becomes the **Slave** NetDisk. The slave gets added to the master NetDisk. The name **Master NetDisk 1** is Master plus the name of the first NetDisk.

13. Click **NetDisk Administrator Tool** .

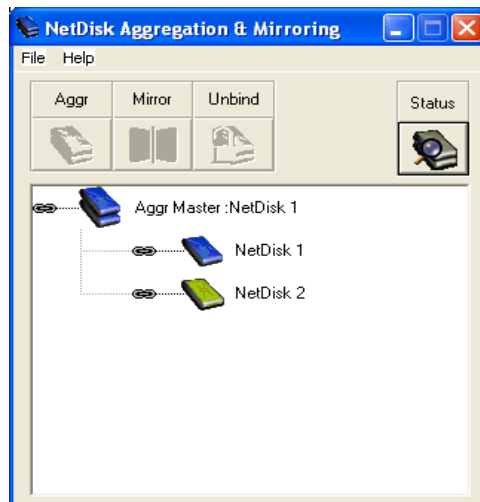
NOTE: NetDisk 1 is unplugged **master** NetDisk and NetDisk 2 is **slave** NetDisk.



14. Plug in the bound NetDisk by selecting either **Plug in Read/Write** or **Plug in Read Only**.



15. Go to **NetDisk Aggregation & Mirroring** window. You will notice the change in the color of the master NetDisk.

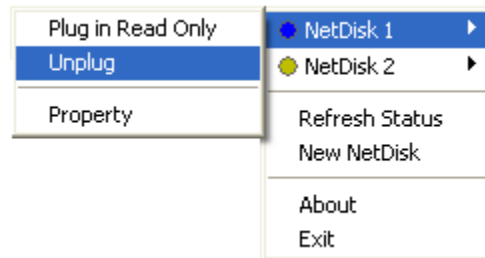


NOTE: **Blue** NetDisk is **Read/Write** and **Green** NetDisk is **Read Only**.

16. Before you can use the new bound NetDisk, the NetDisk needs to be partition. See **Partition NetDisk** on 52.

Aggregation – Unbind

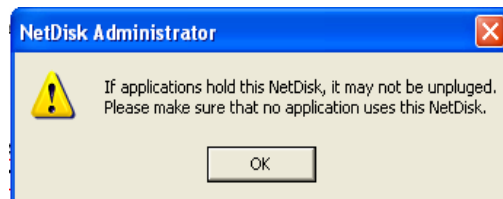
1. Click **NetDisk™ Administrator Tool**  and select a master NetDisk you want to unbind. Then select **Unplug**.



NOTE: You can only unbind unplugged NetDisk.

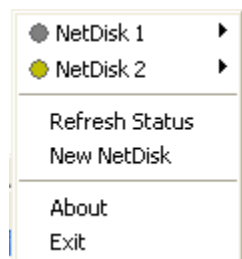
2. **NetDisk Administrator** will appear.

NOTE: If the NetDisk is being used by any applications, NetDisk will not be unplugged. In this case, wait until all the applications are finished using NetDisk. Then try unplugging it again.

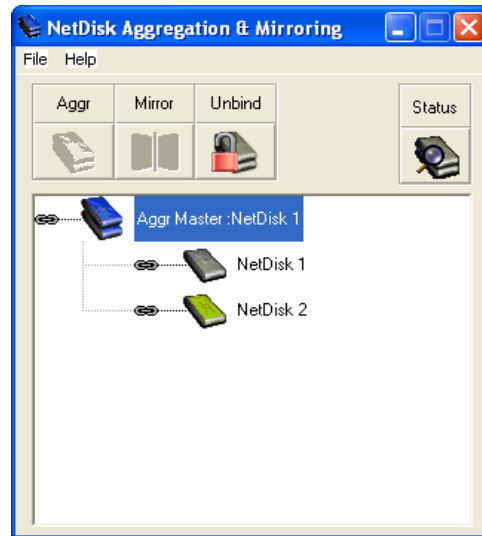



Click **Ok**.

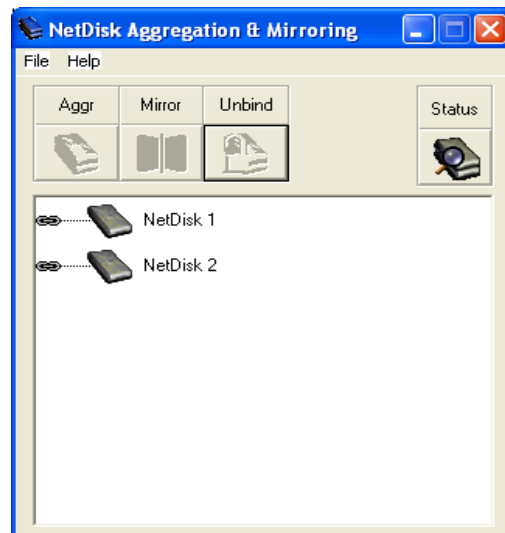
3. Unplugged NetDisk is indicated by **Gray Circle**.



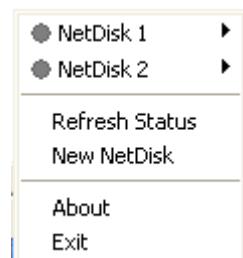
4. Go to **NetDisk Aggregation & Mirroring** window. The color of the master NetDisk you just disabled will be **Gray**. If not, press **Refresh** button.



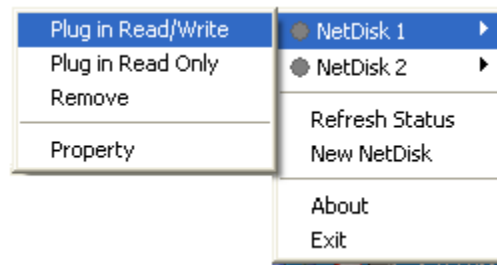
5. Select a NetDisk you want to unbind and click unbind  button.
6. The bound NetDisk will unbind into the two original NetDisk.



Two unbound NetDisk is also visible from **NetDisk™ Administrator Tool**




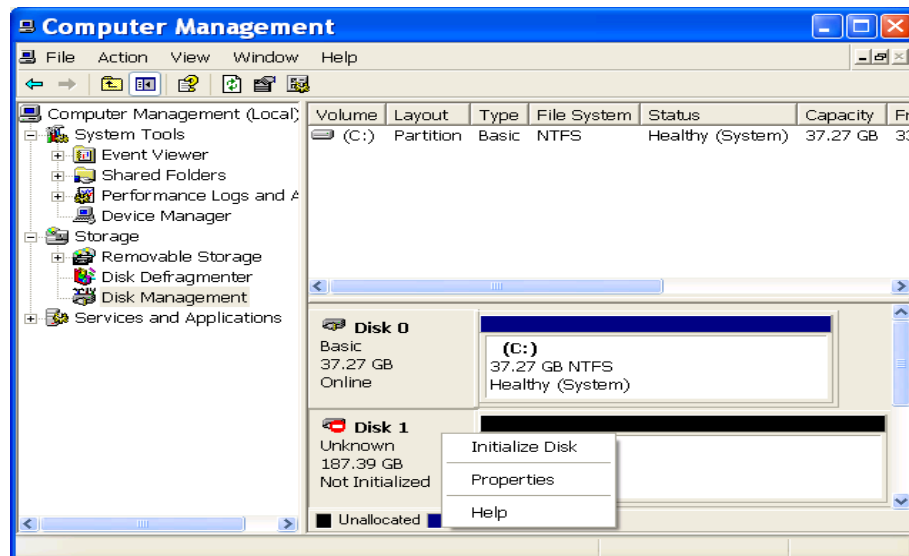
7. Plug in the unbound NetDisk by selecting either **Plug in Read/Write** or **Plug in Read Only**.



Repeat this step for the second unbound NetDisk.

8. Right click **My Computer** > **Management** > **Disk Management**.

If any of the unbound NetDisk are not initialized, indicated by  **Disk 1**, go to **Initialize Disk** on 57. Repeat this step for every not initialized NetDisk.



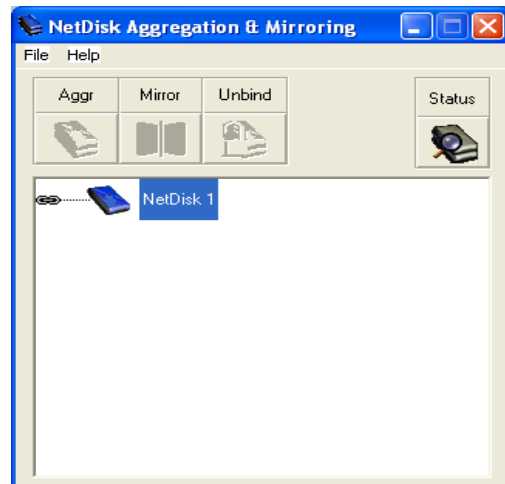
Mirroring

In order to mirror a NetDisk to another NetDisk, both NetDisk has to be **unplugged** and have a **Write Key**. Detailed explanation of unplugging and Write Key are listed in the steps below.

The purpose of mirroring is to continuously create and save a copy of data in one NetDisk to another NetDisk, in real time, whenever a new data is written to the NetDisk.

NOTE: A NetDisk which you are saving the data to must be larger than the NetDisk you are copying the data from. This must always hold true. Otherwise, the NetDisk you are saving the data to may run out of space.

1. Click **Start > Program > NetDisk > NetDisk Aggregation & Mirroring**









NetDisk Aggregation & Mirroring window displays all the NetDisk installed and registered in your computer.

Mirroring can proceed only if two or more NetDisk are registered in the computer.

If two or more NetDisk are listed on the **NetDisk Aggregation & Mirroring** window, continue to the next step. Otherwise, go to **Add NetDisk** on 28 to add more NetDisk.

NOTE: Different color NetDisk indicates different mode.

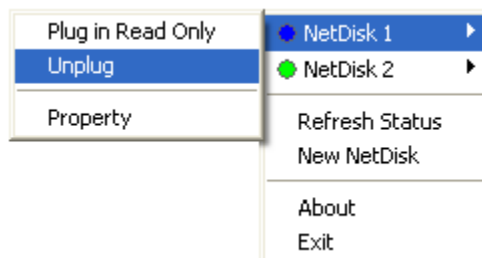
Blue Disk:  Read/Write

Green Disk:		Read Only
Red Disk:		Different Company's Disk (Cannot be used)
Gray Disk:		Unplugged from your computer (Still connected to network)
White Disk:		Someone else is using the NetDisk (Cannot Aggregate or Mirror NetDisk)
Black Disk:		Not connected to the network
Yellow Disk		Slave disk (Used for Aggregation and Mirroring)

- Before mirroring the NetDisk, the NetDisk must be unplugged.

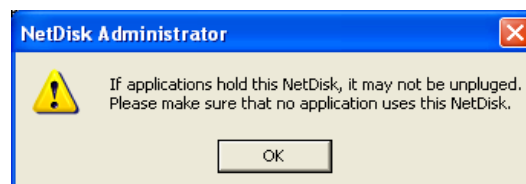
NOTE: Unplug both NetDisk you want to mirror from and mirror to.

To unplug NetDisk, click **NetDisk™ Administrator Tool** . Then select a NetDisk and unplug it by selecting **Unplug**.



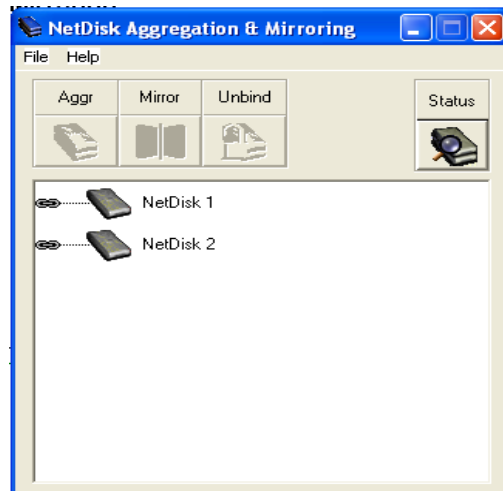
- NetDisk Administrator** will appear.

NOTE: If the NetDisk is being used by any applications, NetDisk will not be unplugged. In this case, wait until all the applications are finished using NetDisk. Then try unplugging it again.



Click **Ok**.

4. Repeat the above two step for the second NetDisk you want to unplug.
5. Now that two NetDisk are unplugged, you will be able to mirror NetDisk.
6. If **NetDisk Aggregation & Mirroring** window is not opened, click **Start > Program > NetDisk > NetDisk Aggregation & Mirroring**



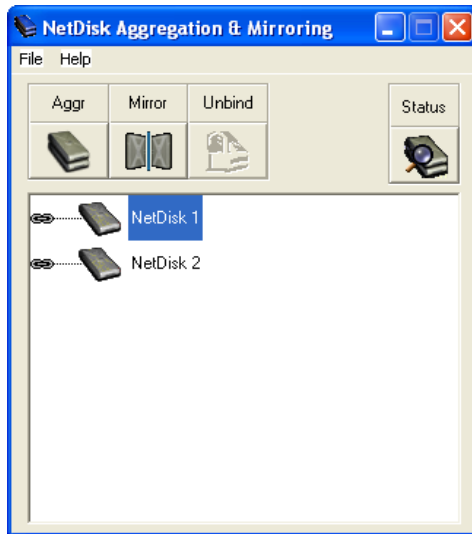
NOTE: Both NetDisk are unplugged. Indicated by the **Gray** colored NetDisk.

If the color of the NetDisk has not been changed to **Gray**, click **Status**. If the color of the disk is still **Green** or **Blue**, repeat steps 2 and 3 for every NetDisk that has not been unplugged.

7. Once two NetDisk have been unplugged, mirroring can begin.
8. Select a NetDisk you would like to mirror from.

NOTE: The size of the NetDisk you are mirroring to have to be larger than the size of the NetDisk you are mirroring it from. This is to prevent

9. Once you select a NetDisk, **Aggregation-bind** and **Mirroring** buttons will be enabled.

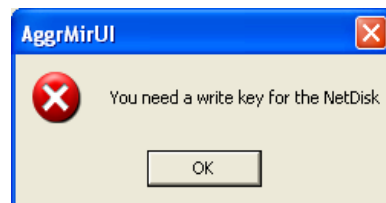


NOTE: Remember you can only mirror NetDisk that are unplugged. If you choose a NetDisk that is still plugged, **Mirror** button will not be enabled.

10. Click mirror  button.

- A. If NetDisk you choose does not have a **Write Key**, the following message will appear.

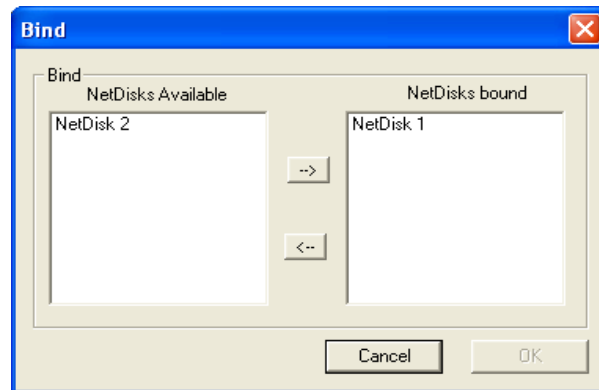
NOTE: Remember NetDisk has to be **unplugged** and have a **Write Key**.



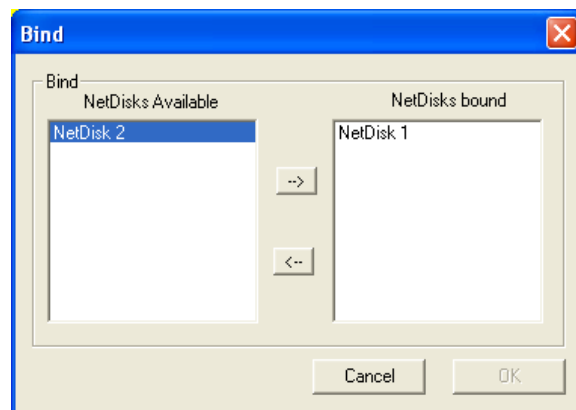
Click **Ok**.


Go to page 30 and do **Change READ ONLY to READ/WRITE**.

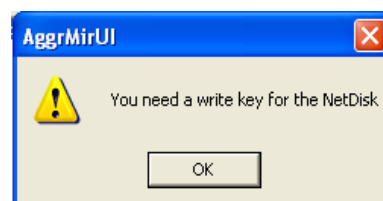
- B. If NetDisk you chose has a **Write Key**, the **Bind** window will appear.



9. Select a NetDisk from the **NetDisk Available** box that you want a data to be mirror to.



10. Click  button.
 - A. If NetDisk you selected from **NetDisks Available** box does not have a **Write Key**, the message window will appear.



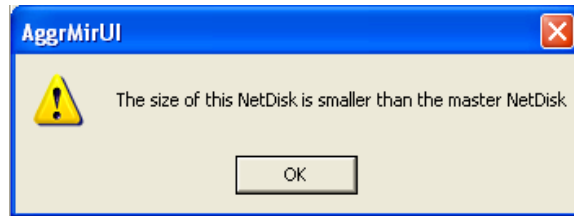
Click **Ok**.

Click **cancel** on the **Bind** window.

Go to page 30 and do **Change READ ONLY to READ/WRITE**.

Go back to step 8 and start again.

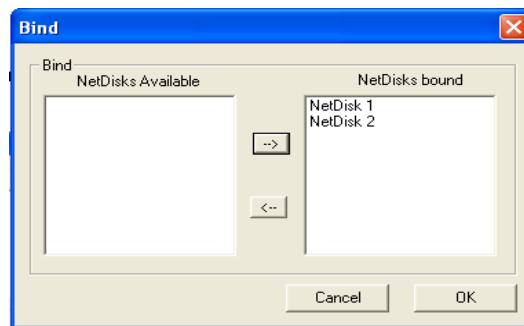
- B. If NetDisk you are mirroring it to is smaller than the NetDisk you are mirroring it from, warning window will appear.



Click **Ok**.

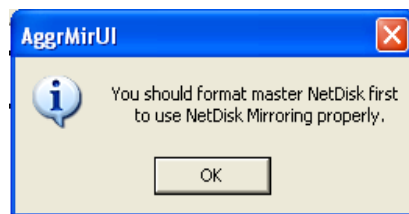
Click **Cancel** from the **Bind** window and repeat from step 8 again.

- 11 Mirroring of NetDisk can proceed.



Click **Ok**.

- 12 AggrMirUI will appear. Click **Ok** then go to **Partition NetDisk** on 52 to partition the master NetDisk,



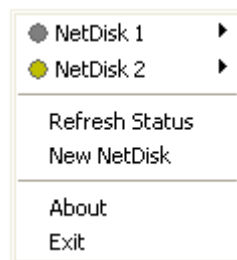
- 13 Mirroring is completed.



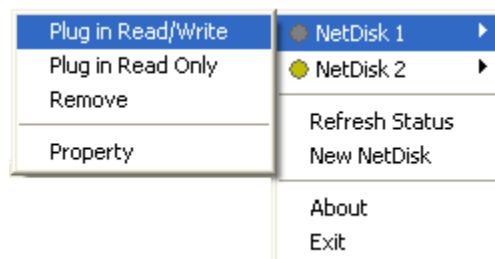
NOTE: The mirrored NetDisk is indicated by the word **Mirror Master: NetDisk 1**. The NetDisk from the **NetDisks bound** box becomes the **Master** NetDisk and the NetDisk from the **NetDisks available** box becomes the **Slave** NetDisk. The master NetDisk is mirrored to slave NetDisk.

14. Click **NetDisk Administrator Tool** .

NOTE: NetDisk 1 is unplugged **master** NetDisk and NetDisk 2 is **slave** NetDisk.

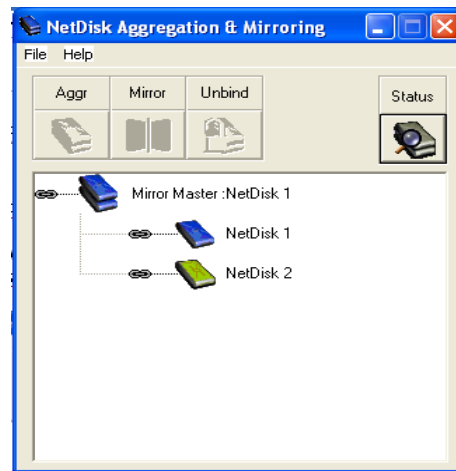


15. Plug in the mirrored NetDisk by selecting either **Plug in Read/Write** or **Plug in Read Only**.



NOTE: **Gray** colored NetDisk is unplugged **master** NetDisk and **Yellow** colored NetDisk is **slave** NetDisk.

16. Go to **NetDisk Aggregation & Mirroring** window. You will notice the change in the color of the master NetDisk.



NOTE: Blue NetDisk is Read/Write and Green NetDisk is Read Only.

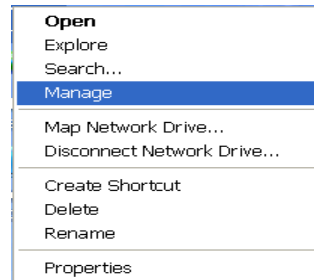
17. Mirroring is completed.

Undo Mirroring

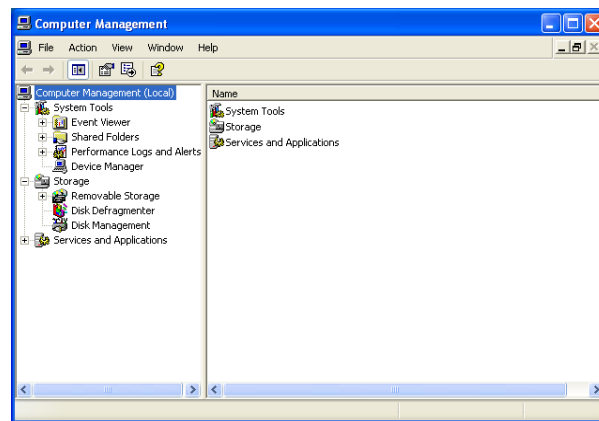
Please follow the **Aggregation - Unbind** on 39 to undo Mirroring.

Partition NetDisk

1. Right click **My Computer** and select **Manage**.

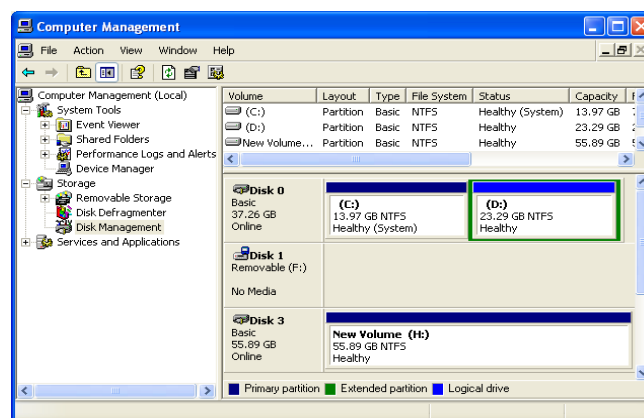


2. **Computer Management** will appear.

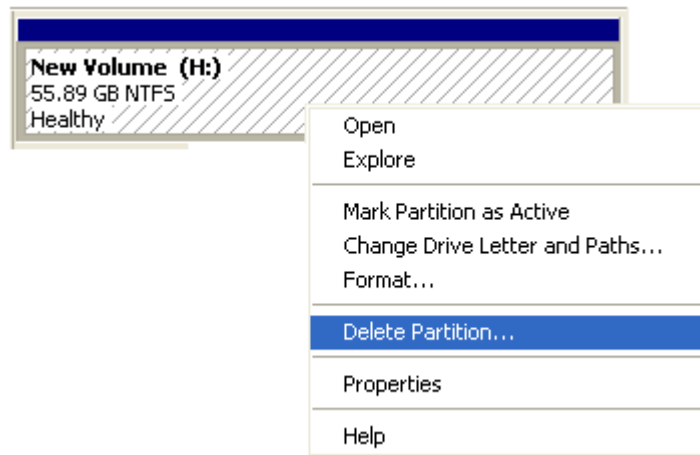


Click **Disk Management** under **Storage**.

3. The plugged disk will be shown on the **Computer Management**.



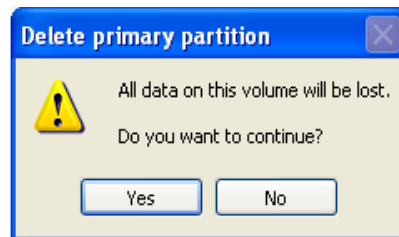
4. Right click on the box and select **Delete Partition**.



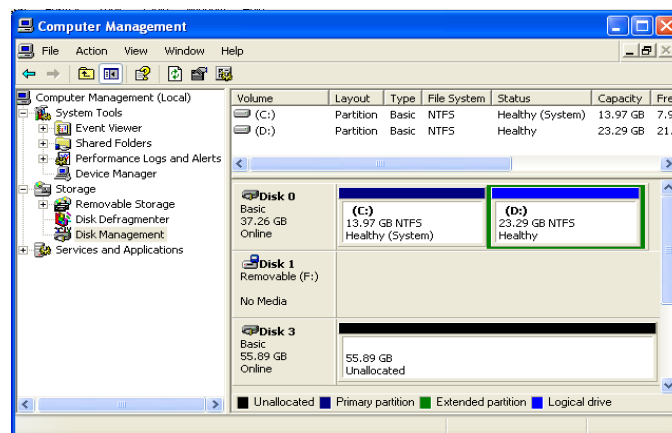
5. **Delete primary partition** will appear.

NOTE: When you delete partition, all the data on the disk will be last.

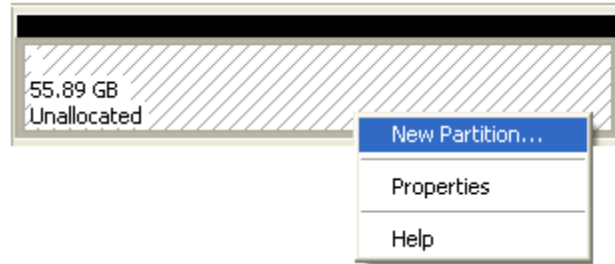
Click **Yes** if you want to continue partitioning. Otherwise, click **No**.



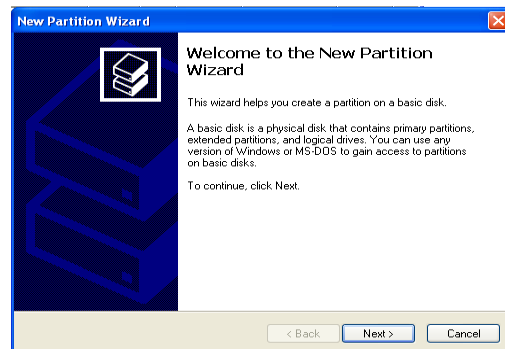
6. Partition has been deleted, indicated by the word **Unallocated**.



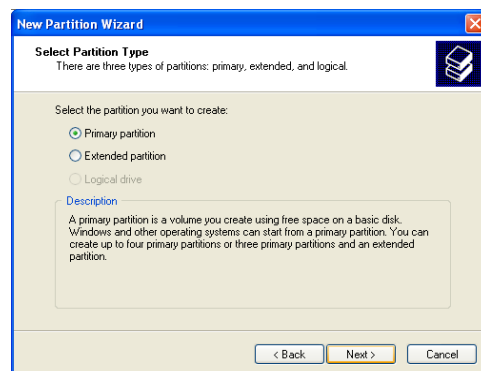
7. Right click on the box and select **New Partition**.



8. **New Partition Wizard:** Click **next**.

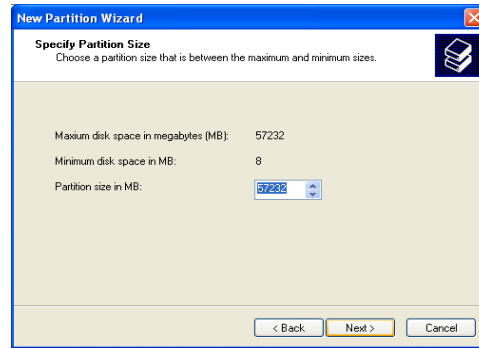


9. **Select Partition Type:** Select **Primary partition** and click **Next**.

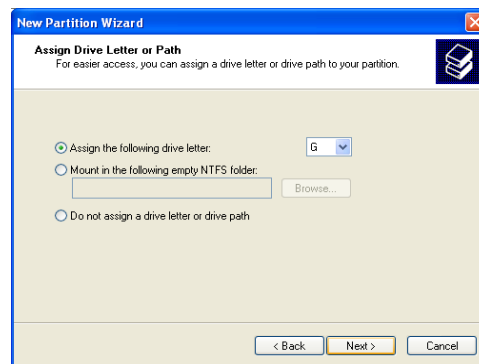


10. **Specify Partition Size:** Click **Next**.

NOTE: The partition size is automatically set. No need to change the size.

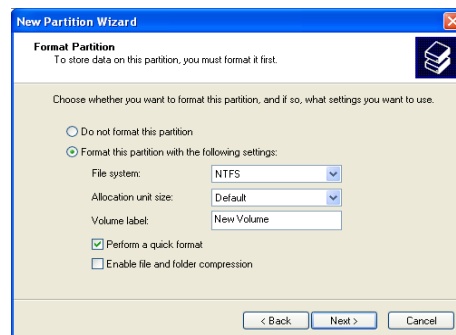


11. **Assign Drive Letter or Path:** Choose the name of the drive from the driver letter then click **Next**.

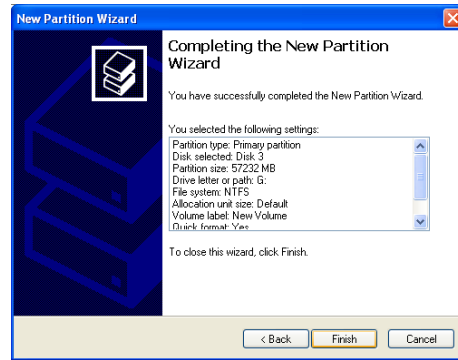


12. **Format Partition:** Select **Format this partition with the following Settings** and **Perform a quick format (Recommended)**.

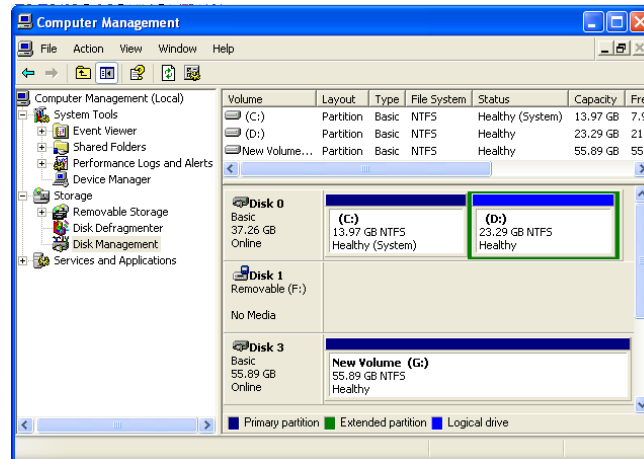
Click **next**.



13. Partitioning is finished. Click **Finish**.

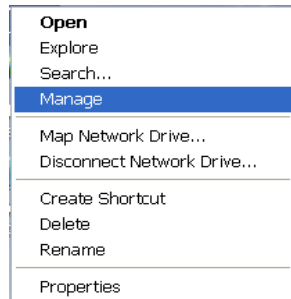


14. You can see the partitioned disk.

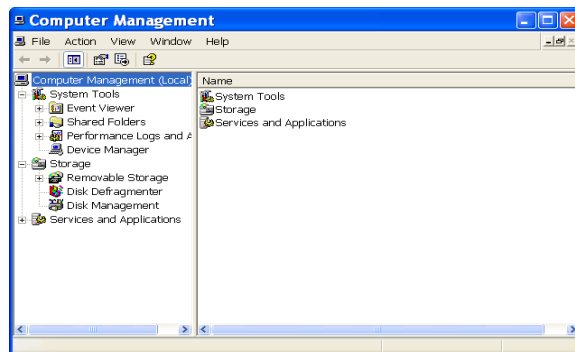


Initialize NetDisk

1. Right click **My Computer** and select **Manage**.



2. **Computer Management** window will appear. Click **Disk Management** under **Storage**.

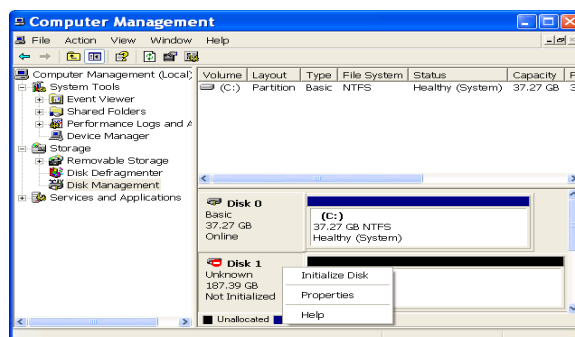


3. **Computer Management** window will list all the disks in the computer.

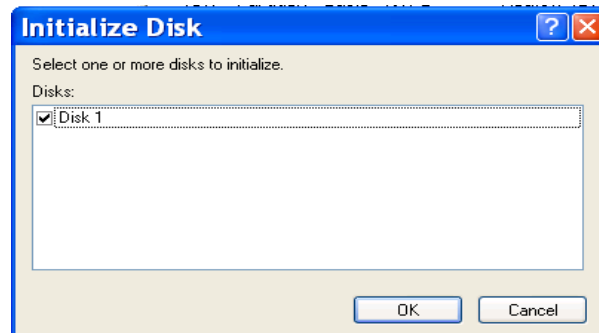


Find NetDisk you want to format and right click

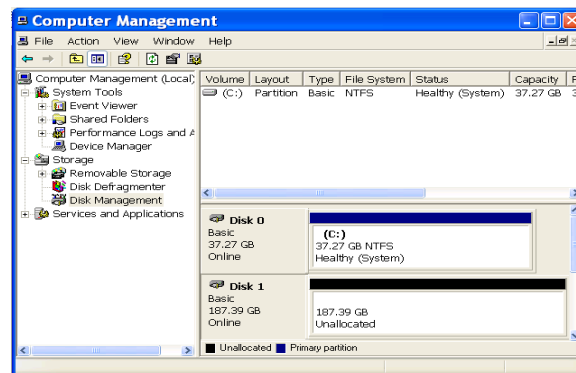
NOTE: NetDisk you are looking for is the unknown or not initialized disk.





4. Select **Initialize Disk**. **Initialize Disk** window will appear. Select the right disk and click **Ok**.

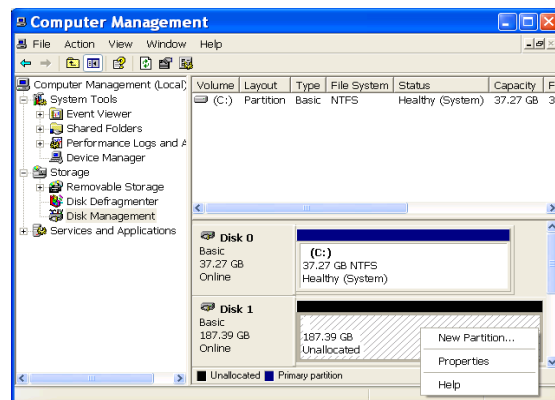


5. NetDisk will be automatically initialized.



NOTE: Unknown  **Disk 1** becomes Basic  **Disk 1**

6. Right click **Unallocated** box then select **New Partition**.



Go to **Partition NetDisk** on 52 and partition the disk.

NetDisk™ Uninstall

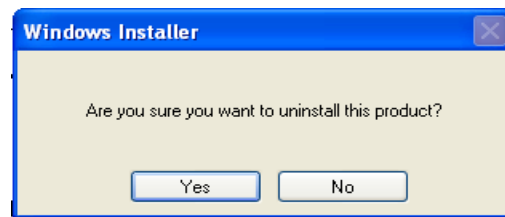
Before you uninstall the NetDisk, you must close all the applications that are using the NetDisk.

NOTE: NetDisk Administrator, NetDisk Aggregation & Mirroring, Windows Explorer and Internet Explorer must be closed.

There are two different ways in which you can uninstall NetDisk.

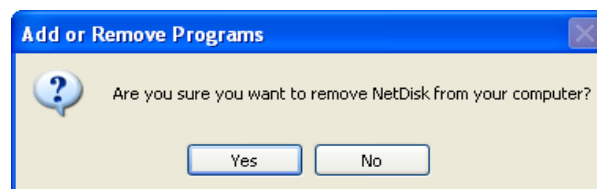
1. Click **Start > All Programs > NetDisk > Uninstall NetDisk**.

Windows Installer will appear. Click **Yes** if you want to continue uninstall. Otherwise click **No**.



2. Click **Start > Control Panel > Add or Remove Programs > NetDisk > Remove**

Add or Remove Programs will appear. Click **Yes** if you want to continue uninstall. Otherwise, click No.



Trouble Shooting

Question - NetDisk Installation was unsuccessful.

Answer - If your installation was not successful, it may be due to a previously installed version of NetDisk software.

1. Un-install software.
2. Reboot computer.
3. Re-install software.
4. Reboot computer.

Question - Un-installation was unsuccessful.

Answer - Windows could be using NetDisk software, reboot and try un-installation again.

Question - NetDisk software was installed, but unable to find NetDisk in Windows.

Answer - After the software installation, use NetDisk Administrator, input NetDisk ID and Write Key. NetDisk Administrator is located on bottom right icon tray; look for an icon that looks like a disk. Click on it and NetDisk popup menu will appear.

Question - NetDisk ID and Write Key do not work.

Answer - NetDisk ID doesn't contain letter O, to eliminate confusion with number 0 (zero). Please check and re-enter correct ID and Write Key.

Question - "The device 'Generic Volume' cannot be stopped right now", message appears and NetDisk cannot be disabled.

Answer - End all programs, if there are not any programs running, Windows could be using it, therefore try to disable it later.

Question - Still can't disable it.

Answer - An unknown program may be using NetDisk, therefore reboot and disable again.

Question - Can't change to **Read & Write Mode**.

Answer - You input a **Write Key** in order to change to **Read & Write Mode**. Write key window will appear, input the write key then change to Read & Write mode.

Question - Can't change to **Read & Write Mode**, even after **Write-Key** is entered.

Answer - Someone else is currently using NetDisk in **Read & Write Mode**. A screen will appear asking if you would like to take over **Read & Write Mode** from the other user, click **Yes or No**. If no one else is using NetDisk and you are unable to enable **Read & Write Mode**, NetDisk and Windows are not synchronized, reboot and try again.

Contact Information

How to Contact XiMeta Technology, Inc.

www.ximeta.com

What to do before you contact us:

Whenever you contact XiMeta Technology, Inc. for technical support, please have the following information available:

Product name, model, serial number and software version number.

Technical Support on the Internet:

For the latest information on NetDisk, visit our website at www.ximeta.com

Technical Support by E-Mail:

Our e-mail address for technical support is support@ximeta.com