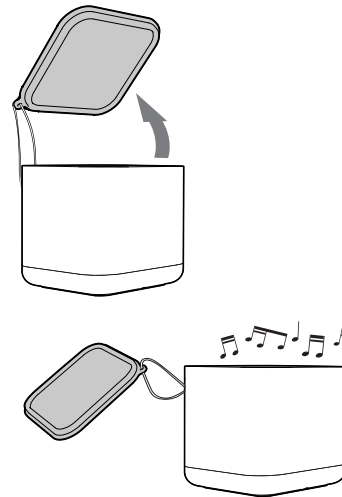
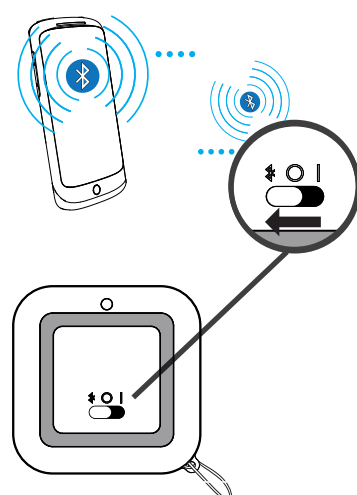
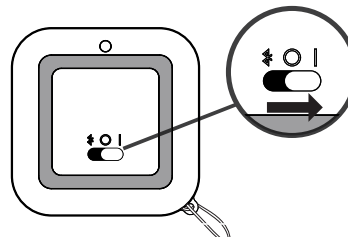
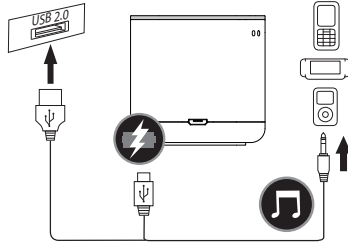
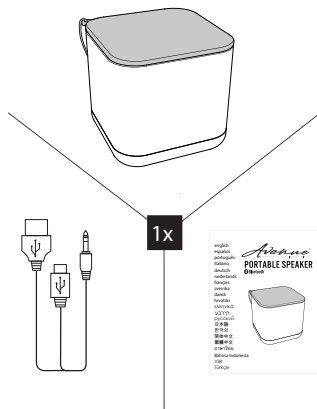
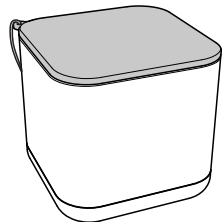


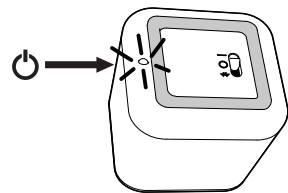
56mm

english
español
português
italiano
deutsch
nederlands
français
svenska
dansk
hrvatski
ελληνικά
עברית
русский
日本語
한국의
简体中文
繁體中文
ภาษาไทย
Bahasa Indonesia
Việt
Türkçe

Avenue
CAREFULLY CONSIDERED SPEAKERS
PORTABLE SPEAKER
Bluetooth



Blue(bright) Azul(brillante) Azul(brilhante) Blu(brillante) Blau(hell) Blauw(helder) Bleu(vif) Blá(kraftig) Blá(bright) Plava (svijetla) Μπλε (φωτεινό) ריהב (לוהט) Синий (ярко) ブルー (明るい) 블루 (밝음) 蓝色 (亮) 藍色 (亮) สีฟ้า (สว่าง) Biru (terang) Màu xanh (sáng) Mavi (aydınlık)	Blue(dim) Azul(tenua) Azul(opaca) Blu(tenua) Blau(matt) Blauw(gedimd) Bleu(faible) Blá(dempet) Blá(svagt) Pava (prigušeno svjetla) Μπλε (γίνεται αμυδρό) ריהב (לוחך) Синий (тускнеет) ブルー (暗くなります) 블루 (흐림) 蓝色 (变暗) 藍色 (變暗) สีฟ้า (ทึบ) Biru (redup) Màu xanh (trở nên mờ) Mavi (sönük)	Red(bright) Rojo Vermelha Rosso Rot Rood Rouge Röd Röd Crven (svijetla) Κόκκινο (φωτεινό) ריהב (סודא) Красный (яркий) レッド (明るい) 레드 (밝음) 红色 (亮) 紅色 (亮) สีแดง (สว่าง) Merah (terang) đỏ (sáng) Kırmızı (aydınlık)
--	--	---



FCC statement

NANO Bluetooth Speaker

This device complies with Part 15 of the FCC Rules. Operation is subject to the following two conditions:

- (1) this device may not cause harmful interference, and
- (2) this device must accept any interference received, including interference that may cause undesired operation.

Changes or modifications not expressly approved by the party responsible for compliance could void the user's authority to operate the equipment.

NOTE: This equipment has been tested and found to comply with the limits for a Class B digital device, pursuant to Part 15 of the FCC Rules. These limits are designed to provide reasonable protection against harmful interference in a residential installation. This equipment generates, uses and can radiate radio frequency energy and, if not installed and used in accordance with the instructions, may cause harmful interference to radio communications.

However, there is no guarantee that interference will not occur in a particular installation. If this equipment does cause harmful interference to radio or television reception, which can be determined by turning the equipment off and on, the user is encouraged to try to correct the interference by one or more of the following measures:

- Reorient or relocate the receiving antenna.
- Increase the separation between the equipment and receiver.
- Connect the equipment into an outlet on a circuit different from that to which the receiver is connected.
- Consult the dealer or an experienced radio/TV technician for help.

RF Exposure Statement
FCC RF warning statement: The device has been evaluated to meet general RF exposure requirement. The device can be used in portable exposure condition without restriction.

FCC ID : A4VXPL01