

TABLE OF CONTENT

I GENERAL DESCRIPTIONS -----	1
Basic Functions-----	1
Accessories-----	4
II OPERATION -----	5
Button function overview-----	5
Function light overview-----	6
Power on/off-----	7
Mode switch-----	7
Playing MP3 music-----	8
Equalizer modes-----	9
Playing voice recording-----	10
Voice recording-----	10
Volume & music/recording control-----	10
Deleting music/voice recording-----	11
PC connection-----	11
Battery power indicator-----	12
Time setting-----	12
Battery recharging-----	12

23 NOV 2004

No 4 0 5 1 1

III INSTALLATION OF MP3 PLAYER-----	14
System requirements-----	14
USB connection-----	14
Installation guide-----	15
Firmware download-----	21
IV CAUTIONS-----	23
V HELPFUL TIPS-----	24
VI PRODUCT SPECIFICATIONS-----	25
NOTE-----	26

I GENERAL DESCRIPTIONS

Basic Functions

1. Playable music format: MP3 / WMA / ADPCM
2. USB1.1 interface
3. Portable storage disk (USB1.1)
4. Playing order: Sequence, Random, Pause, Resuming
5. Choose between different equalizer modes
6. Delete (current track / voice recording)
7. Built in Microphone: ADPCM voice recording
8. Stereo earphone jack: standard ϕ 2.5mm
9. Automatic detecting of battery voltage and power indicator
10. Power saving:
 - ※Automatic power off if no button pushed in 2 minutes under pause status
 - ※Automatic power off in 2 minutes when all tracks played
11. Battery: Rechargeable Li-Ion battery (3.7V)
12. Standard USB port for recharging, download and upload

13. 11 LED lights:

MP3 (MP3): lights up / MP3 mode; flashing per second / playing MP3

PLAY REC (voice recording / playing): lights up / playing mode of voice recording; flashing per second / playing voice recording

RECORDING (voice recording): lights up / voice recording mode; flashing per second / recording

POWER (power supply indicator): lights up / power on; off / power off or no power

(also as battery power indicator) : lights up / full power; flashing per second / 1/5 power remained; flashing per 0.5 sec / out of power soon; off / out of power and automatic power off

CHARGE (recharging): lights up / recharging; off / recharging over

USB : lights up / In proper connection with PC

POP: lights up / equalizer set as POP mode

ROCK : lights up / equalizer set as ROCK mode

JAZZ : lights up / equalizer set as JAZZ mode

CLASSIC: lights up / equalizer set as CLASSIC mode

RANDOM: lights up / random playing

14. 5 buttons:

MODE/ON/OFF----working mode (MODE) / power on (ON) / power off (OFF)

▶/VOLUME+ ----forward (FORWARD) / increase volume (VOLUME+)

◀/VOLUME- ----reverse (REVERSE) / decrease volume (VOLUME-)

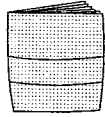
DELETE ----delete (DELETE)

▶/|| ----play (PLAY) / pause (PAUSE)

Accessories



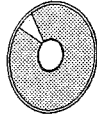
MP3 Watch



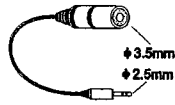
Instruction Manual



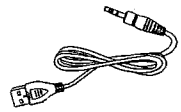
Earphone



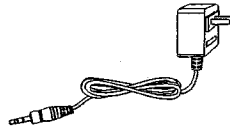
Installation CD



Earphone Plug Converter
(2.5mm to 3.5mm) (optional)



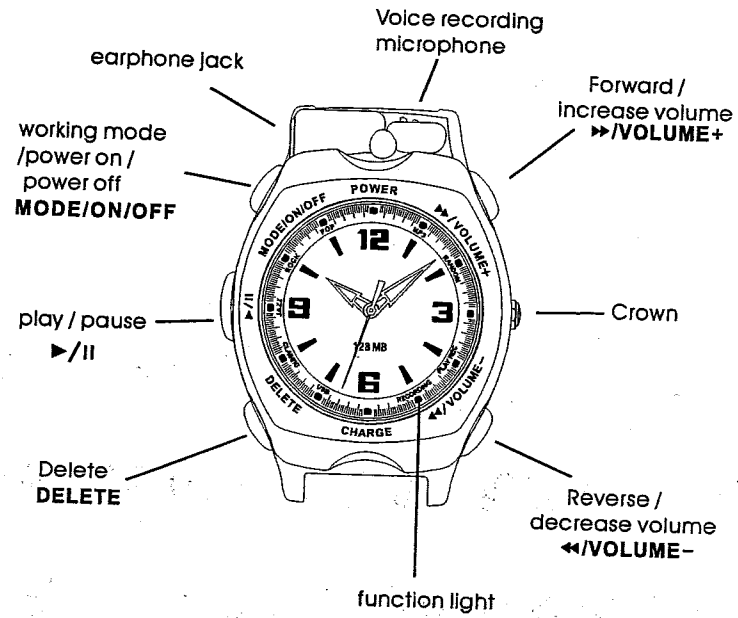
USB extension cable



Charging adapter (optional)

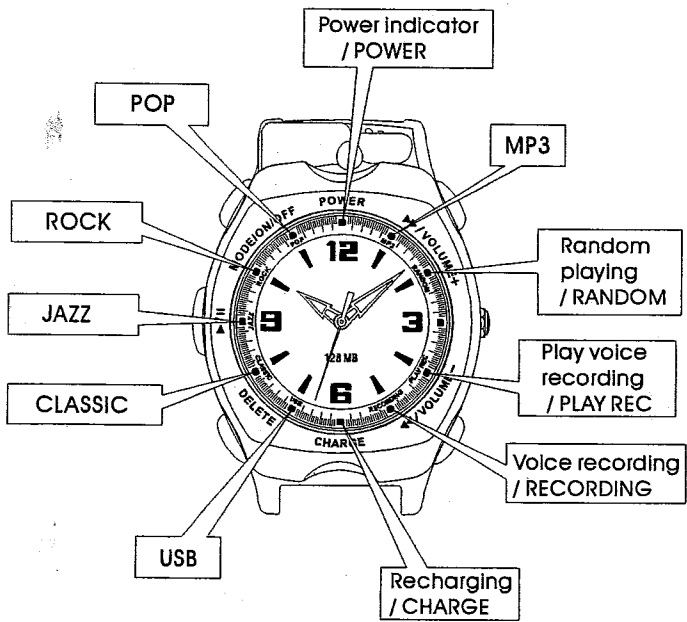
4

II OPERATION



Button function overview

5



Function light overview

Power on/off

Press button **MODE/ON/OFF** momentarily

---- POWER light lights up, power on

Press and hold button **MODE/ON/OFF** for

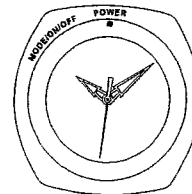
3 seconds

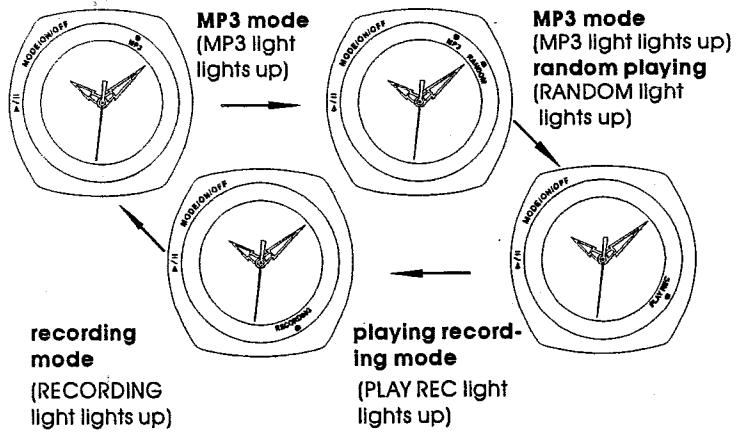
----POWER light off, power off

※Note: default mode when power on : 1) MP3 playing mode, MP3 light lights up. 2) equalizer mode, same as when power off last time 3) play the last track of voice recording once motivated

Mode switch

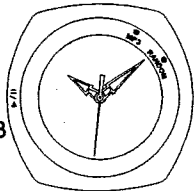
Under pause status of MP3 playing / voice recording playing or when voice recording is stopped, press button **MODE/ON/OFF** momentarily to switch between the following modes:





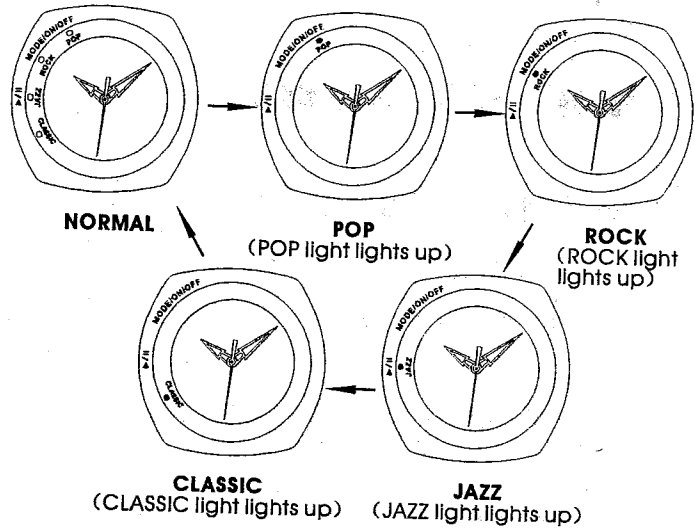
Playing MP3 music (under MP3 mode)

Press ►/|| momentarily ----play, MP3 light flashing
 Press again ►/|| momentarily---- pause, MP3 light lights up
 (Random playing starts when RANDOM light lights up.)



Equalizer modes (under music playing mode)

Press button **MODE/ON/OFF** momentarily --- switch among the following equalizer modes:



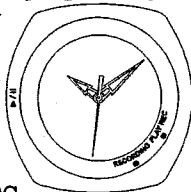
※Note: under NORMAL mode POP/ROCK/CLASSIC/JAZZ lights are off.

23 NOV 2004
 No 4 0 5 1 1

Playing voice recording (under recording playing mode)

Press ►/|| momentarily ----play, PLAY REC light flashing

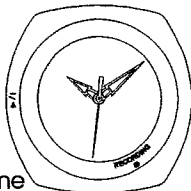
Press again ►/|| momentarily---- pause, PLAY REC light lights up



Voice recording (under recording mode)

Press ►/|| momentarily----start voice recording (RECORDING light flashing per second)

Press again ►/|| momentarily----stop voice recording (RECORDING light lights up)



Volume & music/voice recording control

(Under music playing or voice recording mode)

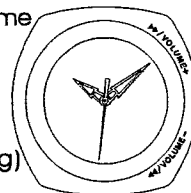
Press and hold ►/VOLUME+ ---- increase volume

Press ►/VOLUME+ momentarily----play next track (music/recording)

Press and hold ◀/VOLUME- ----decrease volume

Press ◀/VOLUME- momentarily (1) play previous track (music/recording) if pressing within 5 seconds after playing

(2) replay the current track (music/recording) if pressing after playing for 5 seconds



10

Deleting music/voice recording

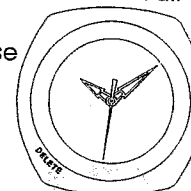
Press and hold button DELETE for 2 seconds----delete the current track(music/voice recording)

Press and hold button DELETE for 10 seconds :

1.delete all music tracks under the pause status of MP3 playing and random playing (MP3 light flashing per 0.5 second within 10 seconds and keeps lighted up after 10 seconds when all tracks deleted.)

2.delete all recording tracks under the pause status of playing recording (PLAY REC light flashing per 0.5 second within 10 seconds and keeps lighted up after 10 seconds when all tracks deleted.)

3.delete all recording tracks under the pause status of recording (RECORDING light flashing per 0.5 second within 10 seconds and keeps lighted up after 10 seconds when all tracks deleted.)



PC connection

- 1.Connect the watch to PC through USB cable.
- 2.Recharging light (CHARGE) lights up, which means the product is already connected to PC and being recharged.
- 3.Flashing USB light (USB) means data in transmission (Busy) ; lighted USB light (USB) means ready for work (Idle) ; dead

11

USB light (USB) means disconnected with PC (Suspend)

4. Remove the product as per PC's requirement when upload and download completed.

Battery power indicator

Power indicator (POWER light): lights up --- full power

Flashing per second --- 1/5 power remained

Flashing per 0.5 second --- out of power soon

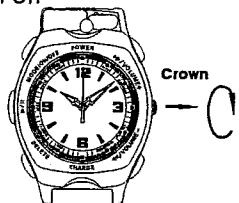
Off --- out of power and automatic power off

Time setting

1. Pull out the crown to stop the second hand when it sweeps to 12 o'clock.

2. Turn the crown to set hour and minute hands.

3. Push back the crown and the second hand starts sweeping.

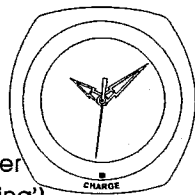


Battery recharging

Recharging is needed when power indicator (POWER light) is flashing per 0.5 second or off.

1) Connect the watch to PC through USB cable or through optional adaptor to AC power for recharging (ref. to Figure 'Battery recharging')

2) Recharging light (CHARGE) lights up ----under recharge



3) Recharging light (CHARGE) lights weakly----slow recharge

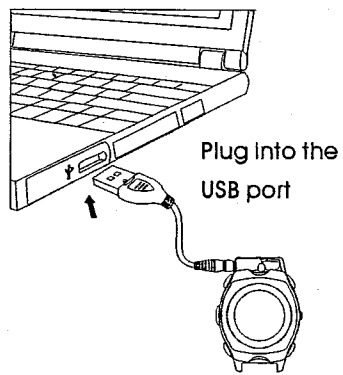
4) Recharging light (CHARGE) off----recharge over

※Note: a) The battery will be recharged slowly when close to full power and the product can work by then.

b) No slow recharge is indicated by CHARGE light when recharged through PC.

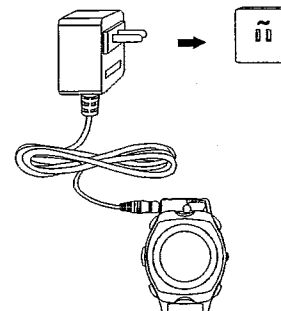
c) The output voltage is 5V± 0.25V(But cannot be more than 7V, otherwise the exchange IC will be destroyed.)

d) Output electric current cannot be less than 500mA)



Battery recharging

Plug into 100v-240v AC power



III INSTALLATION OF MP3 PLAYER

System requirements

IBM compatible personal computer

Pentium 166 MHz MMX or faster

Windows98SE/ME/2000/XP

USB port (Universal Serial Bus)

Mac Os X/Mac Os 9.0

64MB RAM or more

20MB free hard-disk space or more

4 x CD-ROM drive or more

Accessible to Internet (Recommended)

※Note: User name has to be set as administrator under Windows2000

USB connection

1. USB port on your PC is used for sending files and battery recharging.

2. Check the USB port on your PC referring to its hardware instruction manual.

3. USB light and CHARGE light are lighted when the product connected to PC through USB port.

4. Under Win98 SE make sure the driver MP3 Player utilities enclosed in the packing is successfully installed before connecting the product to PC.

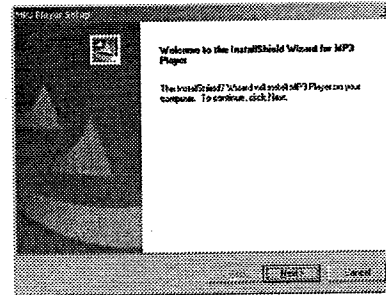
14

Installation guide

Install the driver MP3 Player:

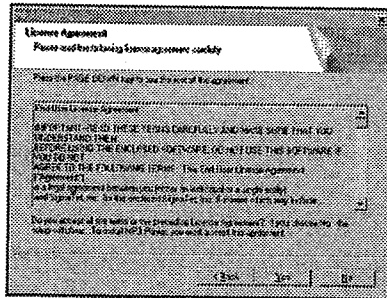
Put the Installation CD into CD-ROM Drive and then it will be installed automatically.

The following window will pop up:

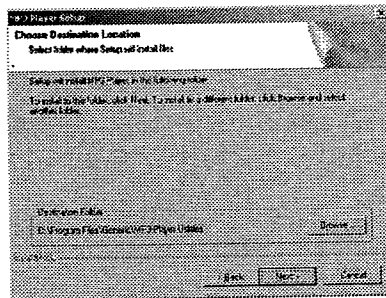


Click Next button and the window below will pop up

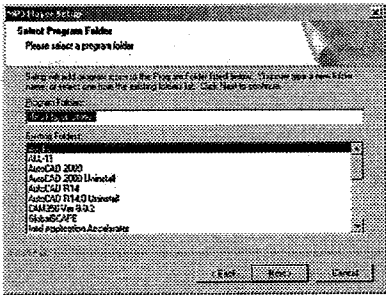
15



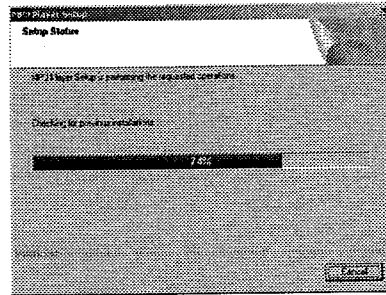
Click Yes button to continue



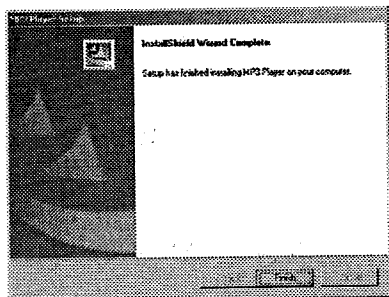
Select the installation folder and then click Next



Click Next to start installation



Installation completed

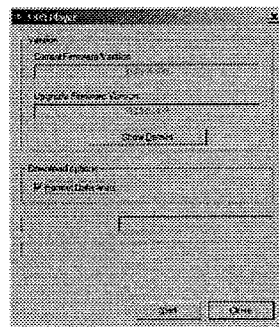


Click Finish and restart your PC according to the PC requirement

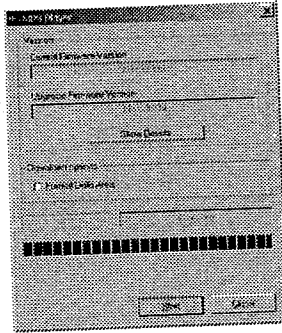
Firmware download:

1. Make sure the MP3 player utilities is successfully installed
2. Connect the product to PC
3. Click (start) → (program) → (MP3 Player Utilities) → (Firmware Download)

the following window will pop up



Click Start and the window below will pop up



Click Close to complete the download

IV CAUTIONS

1. Do not disassemble or change any part of the product that is not mentioned in this manual.
2. Do not pull or plug the product with wet hands, which may cause short circuit of the product.
3. Do not expose the product to fire or excessive heat.
4. Do not expose the product to electromagnetic wave circumstances, which may cause malfunction or data transmitting error of the product.
5. Ensure the USB plug is dry before connecting to computer to avoid damage by moisture.
6. Recharge the battery after power drained to prolong the battery life.

V HELPFUL TIPS

Problem	Analysis	Solution
Unable to play MP3	Battery low	Recharge the battery
	Not standard MP3/WMA files	Download standard MP3/WMA files
Unable to download music	Battery low	Recharge the battery
	USB cable broken or not connected properly.	Check the USB connection and reinsert
Unable to do voice recording	No space for more recording files	Delete some old recording files
No Drive Letter	The USB plug not connected or loose.	Check USB connection
	The Manager Software not installed successfully.	Reinstall the Manager Software
	The PC motherboard does not support USB port.	Upgrade the motherboard driver
Sound skips	MP3 file made at compression level exceeding 320kbps.	Using lower compressing level to record the file into MP3 format.
	Electrical interferences from other appliances like mobile phone, fluorescent lamp, bulb and high voltage wiring etc.	Move away from source of electrical interference
MP3 shut off suddenly	Maybe caused by strong external static interference	Restart the MP3 player by pressing the "MODE/ON/OFF" button

VI PRODUCT SPECIFICATIONS

Built in memory: 32MB/64MB/128MB/256MB/512MB flash

Port: standard USB port

Battery: 170mAh/3.7V macromolecule polymer Li-ion rechargeable battery

Recharging time: 2 hours for fully charged

Battery playtime: 5 continuous hours with fully charged battery

Voice recording time: 2hours/32MB, 4.5hours/64MB, 9hours/128MB, 18hours/256MB,36hours/512MB

Music playtime: WMA format (64Kbps): 60minutes/32MB, 120minutes/64MB, 240minutes/128MB,480minutes/256MB,960minutes/512MB

MP3 format (128Kbps): 30minutes/32MB, 60minutes/64MB, 120minutes/128MB,240minutes/256MB,480minutes/512MB

S/N Ratio: 90dB

Working temperature: -5°C ~ +50°C

Earphone Output: 5mW+5mW

Frequency response: 20Hz ~ 20KHz

Sampling frequency of voice recording: 8KHz

Compression level: 32Kbps ~ 320Kbps

NOTE:

The manufacturer is not responsible for any radio or TV interference caused by unauthorized modifications to this equipment. Such modifications could void the User's authority to operate the equipment.

THIS DEVICE COMPLIES WITH PART 15 OF THE FCC RULES. OPERATION IS SUBJECT TO THE FOLLOWING TWO CONDITIONS:
(1) THIS DEVICE MAY NOT CAUSE HARMFUL INTERFERENCE, AND
(2) THIS DEVICE MUST ACCEPT ANY INTERFERENCE RECEIVED, INCLUDING INTERFERENCE THAT MAY CAUSE UNDESIRE OPERATION.

NOTE: This equipment has been tested and found to comply with the limits for a Class B digital device, pursuant to Part 15 of the FCC Rules. These limits are designed to provide reasonable protection against harmful interference in a residential installation. This equipment generates, uses and can radiate radio frequency energy and, if not installed and used in accordance with the instructions, may cause harmful interference to radio communications. However, there is no guarantee that interference will not occur in a particular installation. If this equipment does cause harmful interference to radio or television reception, which can be determined by turning the equipment off and on, the user is encouraged to try to correct the interference by one or more of the following measures:

- Reorient or relocate the receiving antenna.
- Increase the separation between the equipment and receiver.
- Connect the equipment into an outlet on a circuit different from that to which the receiver is connected.
- Consult the dealer or an experienced radio/TV technician for help.