

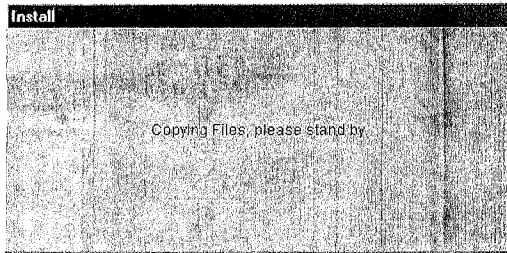
# DATA BANK Software Guideline

## SYSTEM REQUIREMENT

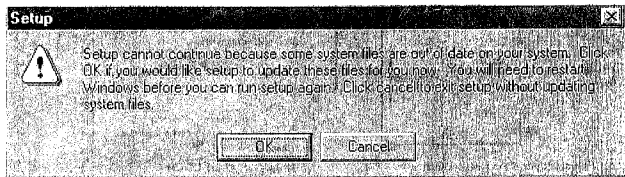
1. IBM PC / AT or compatible Pentium 100 computer or above.
2. CD-ROM or DVD-ROM disk driver.
3. At least one free D-Sub 9 pin plug.
4. Microsoft Window 95 version or above.

## Install DATABANK software

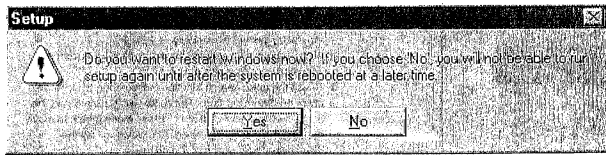
1. Start up Microsoft Windows.
2. Insert the disk into the disk driver, the software will operate automatically later.
3. If the software cannot operate automatically, please double-click the file named **setup.exe** in disk.
4. After initial picture appears, click **Install Wrist Databank Manager**.
5. Starts to execute the install program.



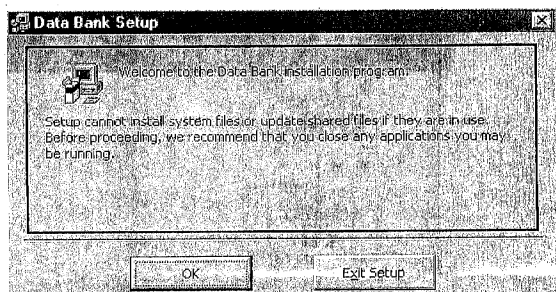
6. Please click **OK**, if the following cue shown in PC.



7. Click **Yes** to reset computer. Please re-start to install program from second step.

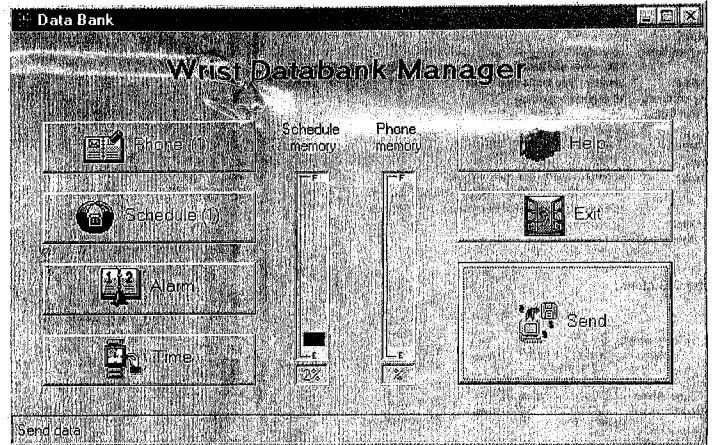


8. Click **OK**.

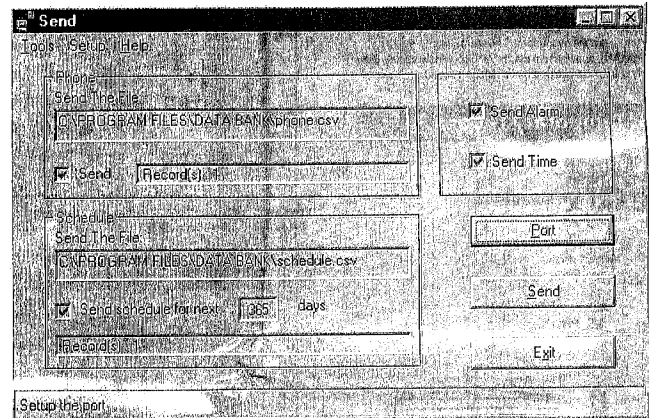


## Procedure of Downloading

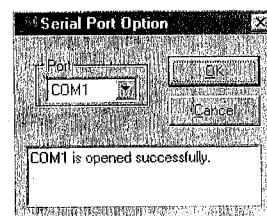
1. Switch off your computer.
2. Insert the 9 pin plug of console into the port of computer. (COM 1 or COM 2).
3. Start up Microsoft Windows.
4. Click **Start** → **Program** → **Data Bank** → Click **Data Bank**.
5. Input data into **Phone, Schedule, Alarm, Time** mode and choose **Send** in **Send Option**.
6. Click **Send**.



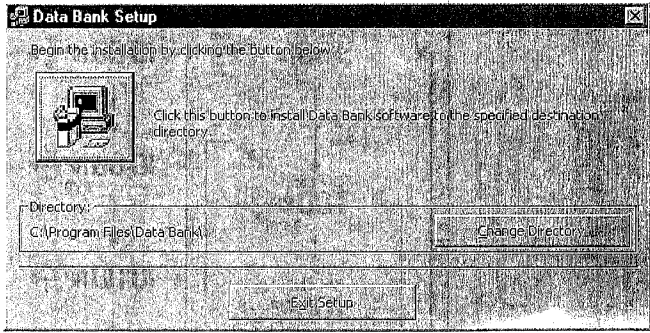
7. Click **Port** to setup the ports to be used. (It is only required for first time use. In future, you can skip to step 9 directly.)



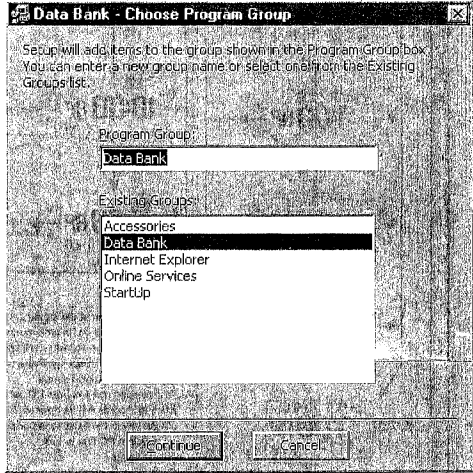
8. Select the correct port and click **OK**.



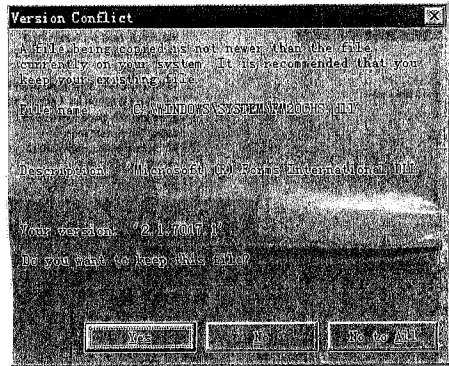
- Click **Change Directory** to choose another install path. Start to install program into computer by clicking the ico.



- Click **Continue**.



- Please click **Yes**, if the cue shown in PC as the below chart.



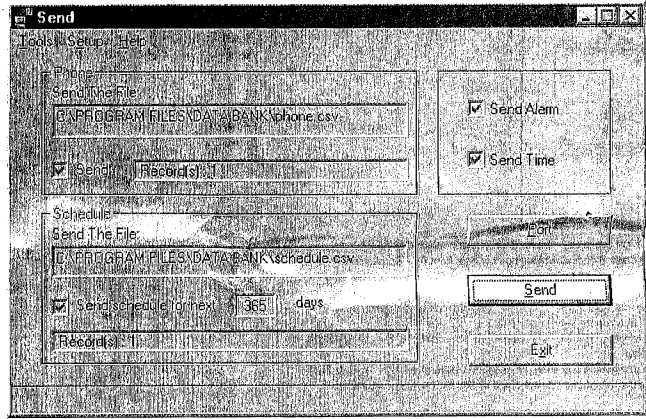
- Installation is completed successfully. Please click **OK**.



- Set the watch to **WDT** mode. When **WDT** appears on the display, push the watch into the console.

- Click **Send** to send data.

**\*\*Note:** If you choose **Not send to watch** in **Phone, Schedule, Alarm and Time** mode at the same time, you cannot send the data to the watch by clicking **Send**.



- Download completed. Click **OK**.

**NOTE:**

The manufacturer is not responsible for any radio or TV interference caused by unauthorized modifications to this equipment. Such modifications could void the User's authority to operate the equipment.

FCC ID: RFZPDATWUSB

This device complies with Part 15 of the FCC Rules. Operation is subject to the following two conditions:  
 (1) this device may not cause harmful interference, and  
 (2) this device must accept any interference received, including interference that may cause undesired operation.