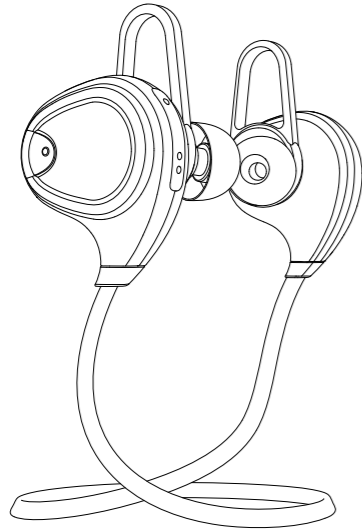


User Manual

RING EARBUDS
Wireless Earbuds

Model: XG31009



Patent Information:
PRC Design: 201630493380.7
Others patent pending



Specification and appearance subject to change without notice.
All trademarks and registered trademarks are the property of their respective owners © 2016 Xoopar Ltd.



NOTE: High fidelity wireless earbuds for sports and daily use. Pick up calls, manage music with one finger microphone included. Battery and controller are built in headset to provide weightless cable.

FCC Warning:

Any Changes or modifications not expressly approved by the party responsible for compliance could void the user's authority to operate the equipment.
This device complies with part 15 of the FCC Rules. Operation is subject to the following two conditions: (1) This device may not cause harmful interference, and (2) this device must accept any interference received, including interference that may cause undesired operation.

This equipment complies with FCC radiation exposure limits set forth for an uncontrolled environment.

Note: This equipment has been tested and found to comply with the limits for a Class B digital device, pursuant to part 15 of the FCC Rules. These limits are designed to provide reasonable protection against harmful interference in a residential installation. This equipment generates, uses and can radiate radio frequency energy and, if not installed and used in accordance with the instructions, may cause harmful interference to radio communications. However, there is no guarantee that interference will not occur in a particular installation. If this equipment does cause harmful interference to radio or television reception, which can be determined by turning the equipment off and on, the user is encouraged to try to correct the interference by one or more of the following measures:

- Reorient or relocate the receiving antenna.
- Increase the separation between the equipment and receiver.
- Connect the equipment into an outlet on a circuit different from that to which the receiver is connected.
- Consult the dealer or an experienced radio/TV technician for help.

Important Safety Instructions

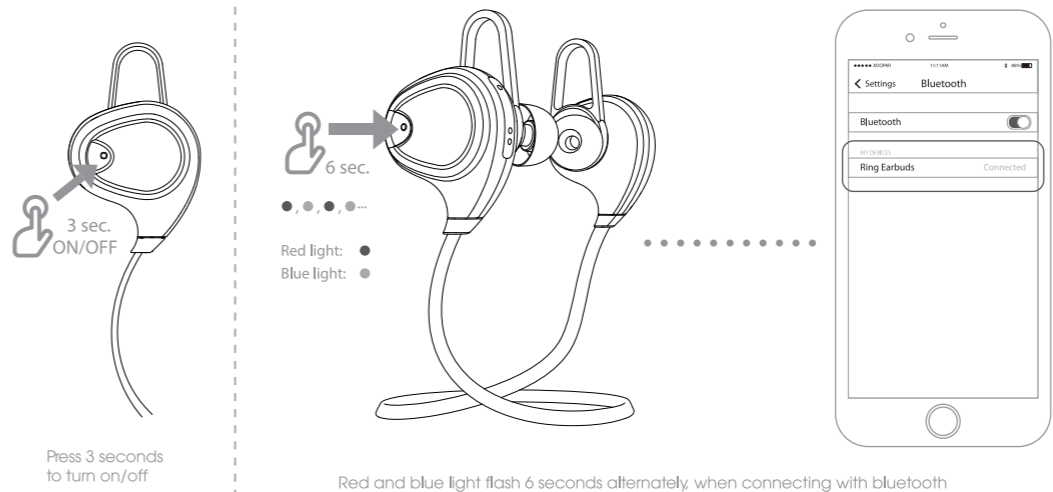
To prevent possible hearing damage, do not listen at high volume levels for long periods.



Please use appointed battery in case of explosion risk, please dispose of lifeless battery under guidance. Recycle your phone. The WEEE logo (shown at the left) appears on the product to indicate that this product must not be disposed off or dumped with your other household wastes. You are liable to dispose of all your electronic or electrical waste equipment by relocating over to the specified collection point for recycling. Of such hazardous waste.

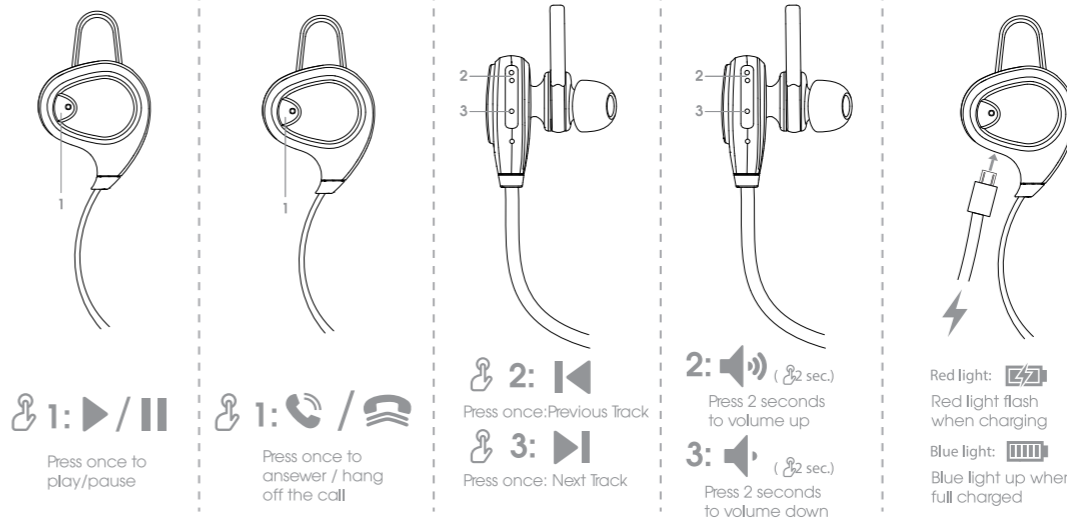
Specifications:

Material: Matt ABS
Transmission Distance: Up to 10m (33ft)
Speaker: High Quality Rich Bass
Music or Talk Time: Up to 5 hrs
Standby Time: Up to 160 hrs
Support Multi-point Connection And Auto Re-connect



Press 3 seconds to turn on/off

Red and blue light flash 6 seconds alternately, when connecting with bluetooth



Press once to play/pause

Press once to answer / hang off the call

Press once: Previous Track

Press 2 seconds to volume up

Press 2 seconds to volume down

Red light: Red light flash when charging
Blue light: Blue light up when full charged