



MOTION COMPUTING M1200 TABLET PC

USER GUIDE

Copyright Information

Acrobat is a registered trademark of Adobe Systems Incorporated.

Microsoft Windows, Windows XP, Windows XP Tablet PC Edition, and Windows Journal are either registered trademarks or trademarks of Microsoft Corporation in the United States and/or other countries.

O₂ Micro is a trademark of O₂ Micro International Limited.

Realtek is a trademark of Realtek Semiconductor Corporation.

Pentium is a registered trademark of Intel Corporation.

Sigmatel is a registered trademark of Sigmatel Corporation.

Motion Computing, Inc. has made every effort to identify trademarked properties and owners on this page. All other trademarks are properties of their respective owners.

NOTICE: The information in this publication is subject to change without notice. MOTION COMPUTING, INC. SHALL NOT BE HELD LIABLE FOR TECHNICAL, OR EDITORIAL ERRORS OR OMISSIONS CONTAINED HEREIN NOR FOR ACCIDENTAL OR CONSEQUENTIAL DAMAGES RESULTING FROM THE FURNISHING, PERFORMANCE, OR USE OF THIS MATERIAL. This publication contains information protected by copyright. No part of this publication may be photocopied or reproduced in any form without prior written consent from Motion Computing, Inc.

© 2003 Motion Computing, Inc.
Motion Computing, the Motion logo, Registered, U.S. Patent and Trademark Office
(March 2003)
P/N 024-02-0016 A05

About This User Guide

CAUTIONS, WARNINGS AND NOTICES

The following notices are found in this *User Guide*:



WARNING: Text set off in this way indicates that failure to follow directions in the warning could result in bodily harm or loss of life.



CAUTION: Text set off in this way indicates that failure to follow directions in the Caution could result in damage to the equipment or loss of information.

IMPORTANT: Text set off in this way presents information or instructions that should be followed or information of particular interest.

NOTE: Text set off in this way presents information or instructions.

MENU ITEMS, BUTTONS, ICONS

Menu items, icons, and instructions found in the procedures in this *User Guide* are set apart by capitalizing them exactly as shown on screen. For example, the Start menu, Dashboard, Tablet and Pen Settings icon, Apply, Reset, etc. Buttons on the chassis are identified through diagrams.

WRITING ON THE DISPLAY

References to writing on the Tablet PC display in this *User Guide* mean any hand-written input using the specially-designed Motion M-Series Pen, provided. The display responds only to this Motion Pen and not to any other type of Pen or to a stylus or other device used with Personal Digital Assistants (PDAs). The display surface may be damaged by ink pens or other pointed objects.

INK

Reference to ink in the documentation means text entered in handwritten format and converted to an object that can be displayed exactly as you wrote it.

REFERENCES TO USING THE PEN AND PEN FUNCTION BUTTON

Notations for using the Motion M-Series Pen, which are found throughout this *User Guide*, are described below:

- Tap — Tap the Pen on the Motion M1200 Tablet PC display, without pressing the function button on the Pen
- Double-tap — Double-tap the Pen on the display, without pressing the function button on the Pen
- Right-click — Press the function button on the Pen and tap the Pen on the display (equivalent to a mouse right-click)
- Press and hold — Press and hold the tip of the Pen to the display, without pressing the function button on the Pen (equivalent to a mouse right-click)
- Tap and drag — Tap and drag the Pen on the display
- Select/Highlight — Tap on the item on the Tablet PC display with the Pen to activate the function

Table of Contents

About This User Guide

- Cautions, Warnings and Notices
- Menu Items, Buttons, Icons
- Writing on the Display
- Ink
- References to Using the Pen and Pen Function Button

Table of Contents

Chapter 1 Using the Motion M1200

Features	1
Package Contents	2
Motion M-Series Accessories	3
Steps We Recommend	3
Practice Using Your Digitizer Pen	3
Calibrate Your Digitizer Pen	3
Take Time for the Tutorials	4
Motion Resources Page and Online User Guide	4
Microsoft Help and Resources Center Page	5
Did You Know Section	5
Take a Tour of Windows XP	5

Chapter 2 Motion M1200 Tablet PC Hardware Components

Motion Display and Writing Surface	6
Overview of the Display	7
Chassis and Hard Top	9
Pen	9
Motion M-Series AC Adapter	9
Motion M-Series Batteries	9
Front Panel Buttons	10
Modem and LAN Ports	10
Motion M1200 LEDs	11
Motion M1200 Front Panel LEDs	11
Battery Status LEDs	11
Battery Status Gauge	12
Labels	13
Accessories	14
Motion M-Series Desktop Stand	14
Motion M-Series FlexDock	14
Motion M-Series Mobile Keyboard with Touch Pad ...	15
Motion M-Series Hard Top Cover and Portfolios	15
Motion M-Series Optical Disk Drives	16
256MB and 512MB Memory Upgrade Modules	16
PC Card Slot	17
Mini PCI Card (Wireless)	17

Chapter 3 Motion M1200 Tablet PC Software

Software CDs	18
Motion M1200 Recovery CDs	18
Motion M1200 Utilities and Drivers CD	19
Motion M-Series Application CD	19
Motion M1200 Application Software	20
Motion M1200 Dashboard	20
Tablet PC Input Panel	20
Speech and Voice Recognition	21
Windows XP Tablet PC Edition	22

Chapter 4 Using Your Motion M1200 Tablet PC

Initializing Microsoft Windows	23
Required	23
Optional	23
Windows Initialization Procedure	24
Microsoft Office Registration	25

Starting and Stopping the Motion M1200 Tablet PC	25
Starting	25
Stopping	25
Opening the Motion Dashboard	26
Using Stand By or Hibernate	26
Setting Up Stand By or Hibernate with the Power Switch	26
Accessing Stand By from the Motion Dashboard	27
Returning from Stand By or Hibernate	27
Operating the Motion M-Series Digitizer Pen	27
Calibrating the Pen	27
Writing with the Pen	28
Adjusting Pen Properties	29
Learning Pen Gestures	29
Using the Tablet PC Input Panel Window	30
Sending as Text on the Tablet PC Input Panel	31
Sending as Ink (Handwriting/Drawings) on the Tablet PC Input Panel	31
Writing and Drawing in the Windows Journal	32
Creating Forms and Editing in the Windows Journal	33
Sticky Notes	33
Changing Screen Orientation	34
Changing Button Properties	35
Adjusting Brightness	36
Connecting the Appropriate AC Power Adapter	36
Reading Battery Power	36
Reading Battery Power from the Tablet PC Display	36
Reading Battery Power from the Battery Gauge	37
Reading the Power Meter	37
Changing the Power Schemes	37
Creating a New Power Scheme	37
Charging the Battery	38
Changing the Battery	38
Disposing of Used Batteries	39
Battery and Power Management Hints	39
Adding Memory	39
Selecting Cables for Operating Optical Disk Drives	40
Installing Optical Disk Drives	40
Setting Up a Dual Display Clone or Extended Desktop	40
Changing to Dual Display Clone	41
Changing to an Extended Desktop	42
Setting Up a Wireless Connection	43
Setting Up Speech Recognition	44
Using Speech Recognition	44
Changing Screen Resolution	44
Setting Up a New Screen Resolution Scheme	45
Multimedia Applications	45

Setting Up Tablet PC Security	45
Setting the Windows Operating System Password	45
Setting the BIOS Passwords	46
Clearing Tablet PC Security	47
Caring for the Motion M1200 and Its Accessories	47
General Care	48
Caring for the Display Screen	48
Caring for the Motion M-Series Digitizer Pen	48
Ordering New Pens	49
Traveling With the Motion M1200 Tablet PC	
Packing the Motion M1200	49
Traveling by Air	49
Other Travel Hints	50

Appendix A Regulatory Compliance Notices

Appendix B Troubleshooting and Support

Appendix C Safety

Appendix D Specifications

Appendix E Limited Warranties

Index

Chapter 1

Getting Started with the Motion M1200 Tablet PC

Thank you for choosing the Motion M1200 Tablet PC from Motion Computing™! The Motion M1200 combines the best features of a desktop computer and notebook with more power than any touchscreen or personal digital assistant (PDA).

MOTION M1200 FEATURES

This section describes the Motion M1200 Tablet PC features, which include:

- Microsoft® Windows® XP Tablet PC Edition operating system
- 12.1-inch XGA TFT LCD display
- M-Series Digitizer Pen with function button
- Intel® Pentium® processor
- 256MB base RAM, upgradeable to 1GB; minimum 20GB hard drive
- (Optional) Motion M-Series FlexDock docking station for desktop use
- IEEE 802.11b wireless LAN mini-PCI card capability
- Front panel LEDs that show Power/Stand By status, battery status, Hard Disk Drive (HDD) status, and wireless connections
- Front Panel Buttons: programmable buttons with Primary and Secondary functions; one five-way directional control button; one Security button (Ctrl-Alt-Del)
- Special Features: Motion Dashboard for easy access to Tablet PC functions; a rotating portrait/landscape display; hand-writing/drawing recognition; voice recognition software; dual-head video controller
- Power switch On/Off; with Stand By and Hibernate modes
- AC Power Adapter and power cord

- I/O: Microphone in; Headphone out; DC power in; two USB ports; IEEE 1394 port; external VGA monitor port; RJ-11 (modem); RJ-45 (Ethernet network)
- Pen storage slot and Pen tether anchor on the Tablet PC chassis
- PC card slot, for networking, memory expansion or accessory connections
- USB keyboard and mouse support
- 6-cell, prismatic Lithium-ion battery
- (Optional) CDROM, CDRW, and DVD/CDRW drives
- Power saving schemes
- Multimedia application support
- Lightweight Magnesium alloy chassis
- Kensington lock slot

PACKAGE CONTENTS

Your Motion M1200 package should contain the following Motion M-Series equipment:

- Motion M1200 Tablet PC
- Digitizer Pen, extra pen tips, and pen tip replacement tool
- AC Adapter, Power Cord, and AC Mini Plug
- Hard Top Cover
- Adjustable desktop stand
- Cloth for cleaning the display
- System software CDs (for a list of CDs, see Chapter 3 of this *User Guide*)
- Product documentation

NOTE: Before discarding any shipping containers, check that you've unpacked all the items. If anything appears to be missing from your order, read the invoice to see if the part was back ordered. To check your order, contact your Motion reseller or Motion Computing, if you bought the Tablet PC directly from us.

Motion M-Series Accessories

You can purchase any of the following Motion M-Series accessories:

NOTE: New accessories may be added from time to time. Visit the Motion Computing website at www.motioncomputing.com/accessories for the most current list of options.

- FlexDock with Microphone in; Headphone out; DC power in; three USB ports, one IEEE 1394 port; VGA monitor port; pass-through to an RJ-11 (modem) port on the Motion M1200; RJ-45 (Ethernet LAN/network) port; docking connector for the Motion M1200
- Mobile Keyboard with Touch Pad
- Replacement Hard Top cover
- Standard or Executive Leather Portfolio
- Extra pens
- CDROM, CDRW, or DVD/CDRW Optical Disk Drives

**STEPS WE
RECOMMEND**

- 256MB or 512MB Memory Upgrade Modules
- 40GB to 60GB Hard Drives
- PC card options
- Additional software (For a list of software, see Chapter 3.)

Congratulations! By now you should have read the Installation Poster, started your Tablet PC, and initialized Windows XP. We recommend that you now take the following steps:

NOTE: If you are reading this *User Guide* from our website, you may not have set up nor used the Tablet PC. Before you can begin using the Tablet PC, you must plug in a standard USB keyboard and initialize the Windows XP operating system software. This procedure is described in Chapter 4 of this *User Guide*.

- Practice using the Pen and Pen function button.
- Calibrate the Motion M-Series Digitizer Pen
- Play the Inkball game to hone your Pen skills.
- Take the tutorials.
- Review the Using Your Motion M1200 page.
- Review the Windows Help and Support Center page.
- Take the Microsoft Windows XP tour.

Each of these is briefly described in the following sections.

Practice Using Your Digitizer Pen

The Motion M-Series Digitizer Pen is one of the unique components of the Tablet PC, but it may take a little practice to use. Here are some hints:

- When you use the Tablet PC, you can rest your hand or arm on the display. You won't disturb any open programs or damage its durable surface through this type of use.
- Watch the small dot, which is the Pen cursor, instead of the Pen tip when you write. The cursor is a guide for your Pen movements.
- Practice writing and learn how hard and where to tap on the display. You need these skills for writing recognition and for tapping icons and menus to activate functions.
- Learn how to hold the Pen (like any other writing tool) and when and how to click the function button to make the Pen work like a mouse.

For other hints about using the Pen, see the section "Using the Pen" in Chapter 4 of this *User Guide*.

Calibrate Your Digitizer Pen

Your Digitizer Pen will function better and you'll be more successful using it if you calibrate it now. For information about calibrating the Pen, see the section "Calibrating the Pen" in Chapter 4 of this *User Guide*.

Play Inkball

Practice your pen skills on this game found from Start, All Programs, Games, Inkball.



Take Time for the Tutorials

When you start the Motion M1200, several Tablet PC Tutorials appear that will help you learn about the Tablet PC and its various functions, such as the Windows Journal, Tablet PC Input Panel, and Speech recognition.

The Tutorials are short, quick, and informative and we highly recommend them as a starting place to begin a successful experience with your Tablet PC.



NOTE: Microsoft Windows XP for Tablet PC offers several tutorials. One set appears each time you start the Tablet PC (unless you deactivate this option). Others can be found by selecting Start, Using Your Motion M1200, or from Start, Get Going with Tablet PC.

Motion Resources Page and Online User Guide

The link to the *Motion M1200 User Guide* is provided on the Using Your Motion M1200 page. Plus there are instructions for using the Pen, Dashboard, and other applications included on your Tablet PC found there.



Microsoft Help and Resources Center Page

You can find additional information about your Motion M1200 and the Microsoft Windows XP operating system that may not be found in this *User Guide* in the Microsoft Help and Support Center. The Help and Support Center is installed on your Tablet PC. To access Help, select Start, then Help and Support.



Did You Know Section

Whenever you open the Help and Support Center while the Motion M1200 is connected to the Internet, the “Did You Know” section checks for updates from Microsoft and Motion Computing, such as system usage hints, or notices from Motion Computing about your Motion M1200 Tablet PC.

Take a Tour of Windows XP

If this is your first experience with the Windows XP operating system, this tour is a good introduction. You can find this by selecting Start, then Windows Help and Support Center, and finally What's new in Windows XP.



Chapter 2

Motion M1200 Tablet PC Hardware Components

This chapter describes the Motion M1200 Tablet PC, its components, LEDs, hardware, and accessories.

MOTION DISPLAY AND WRITING SURFACE

The Motion M1200 Tablet PC display and writing surface combine three key components:

- A highly-readable, liquid-crystal display
- An acrylic protective layer that provides a hard writing surface, minimizes glare, and improves viewability
- Under the display, a digitizer panel that allows on-screen keyboard data entry, plus hand-written entry with a specially-designed Digitizer Pen



Unlike touchscreens and Personal Digital Assistants (PDAs), the Motion M1200 Tablet PC display responds only to the Motion M-Series Digitizer Pen. The Motion M1200 will not respond to a PDA stylus or to finger taps.

You can steady your hand on the display surface when you write. The pressure of your hand won't affect any open programs or data input.

NOTE: For more information about the care and maintenance of the Motion M1200 display and writing surface, see Chapter 4 of this *User Guide*.

OVERVIEW OF THE DISPLAY

The following diagram shows the LEDs, buttons, connectors, and other components on the Motion M1200 Tablet PC.

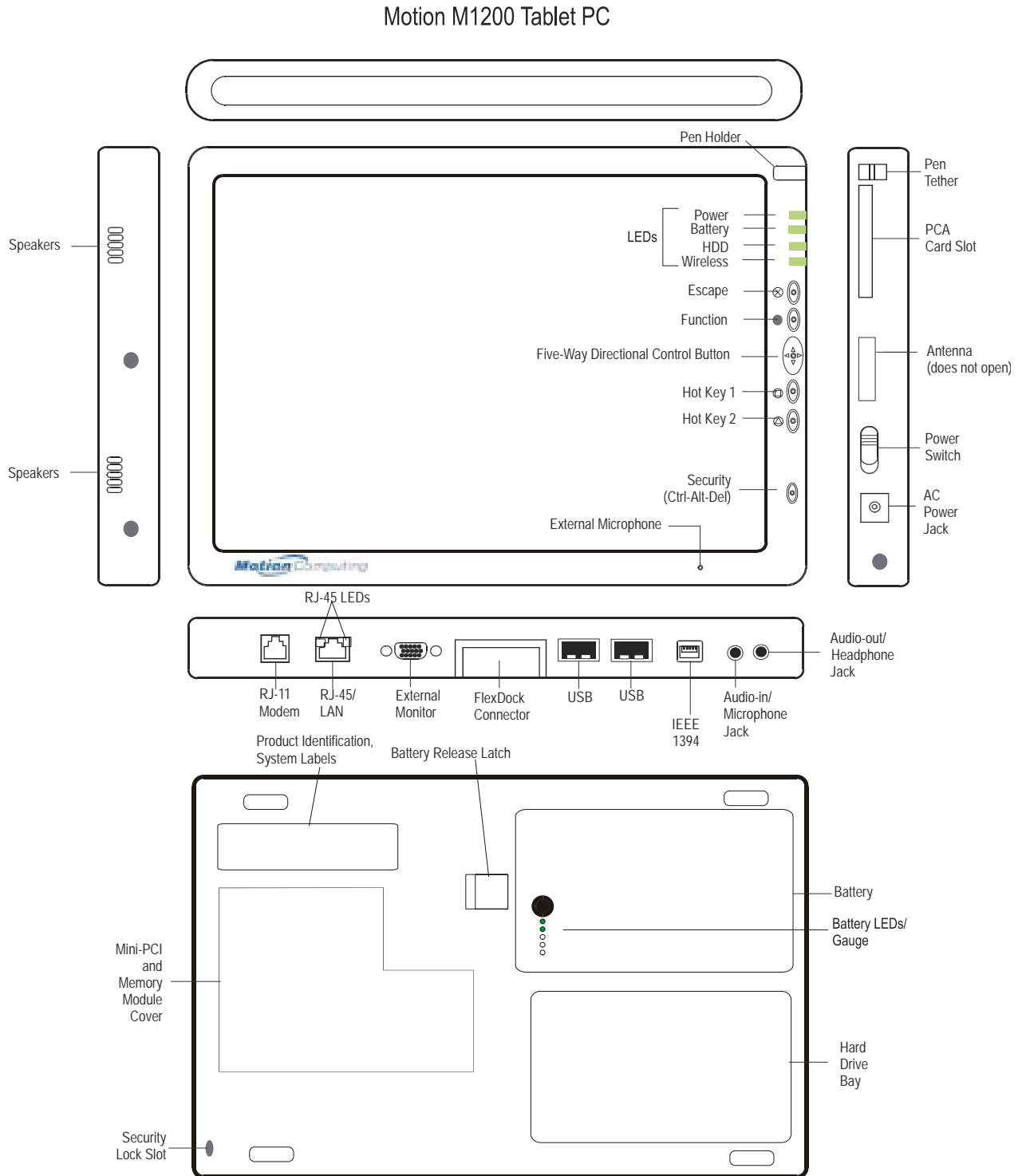


Table 2-1 Motion M1200 Tablet PC LEDs, Buttons, Connectors, and Other Components	
Pen holder	Storage for the Motion M-Series Digitizer Pen
Power LED	Displays power status
Battery LED	Displays battery status
Hard Disk Drive LED	Displays Hard Disk Drive activity
Wireless LED	Displays wireless status (ON or OFF) and activity
Escape Button	Primary function (not programmable): Esc. Secondary function (programmable): Alt+Tab
Function Button	Press and hold this Function button + another button to activate Secondary functions
Five-way Directional Control Button	Primary functions (not programmable): Scrolls Up/Down/Right/Left + Enter Secondary functions (programmable): Left arrow—Shift+Tab; Right arrow—Tab; Up arrow—Page Up; Down arrow—Page Down
Hot Key #1 Button	Primary function (programmable): Displays Dashboard Secondary function (programmable): Opens the Tablet PC Input Panel.
Hot Key #2 Button	Primary function (programmable): Changes the Tablet PC display orientation Secondary function (programmable): Opens the Windows Journal.
Security Button	Primary function: Ctrl-Alt-Del; Secondary function: None
Built-in, mono microphone	Works at a natural distance; disabled when an external microphone is plugged in
Pen tether	Attach a pen tether to this post to secure the Pen.
PC Card slot	Holds one Type-II PC card for networking, memory expansion or accessory connections. A plastic blank ships with the Motion M1200; leave this installed when the slot isn't in use.
Antenna cover	802.11 wireless networking antenna cover; this area does not open
Power switch	Turns the Motion M1200 on and off; can be set to activate Hibernate or Stand By mode
AC power jack	Connects to the Motion M-Series AC Adapter through a right-angled connector on the Adapter. Use only a Motion M-Series AC Adapter for your Motion M1200 Tablet PC.
Speakers (2) integrated	Speakers mute when a headset or external speakers are connected.
RJ-11 Modem port	Connector for a 56K V.90 modem
RJ-45/LAN	Standard RJ-45 connector for a 10/100 Mbps network
RJ-45 LEDs (2)	Display status of the LAN connection; blink green/amber for a connection
External monitor	Fits a standard DB-15 monitor connector for an external monitor.
Docking connector	Docks with the Motion M-Series FlexDock
USB ports (2)	Each Universal Serial Bus port connects USB accessories, such as a keyboard, mouse, printer, or digital camera.
IEEE 1394 port	Connects 4-pin accessories, such as DVD players, optical disk drives, video cameras and other electronics.
Audio-in/Microphone	Input jack for 3.5mm plug for a microphone
Audio-out/Headphone	Input jack for a 3.5mm plug for a headset; mutes the built-in speakers
Battery	Self-monitoring battery monitors the amount of charge and notifies the Tablet PC how long it will operate with the current power consumption; user swappable
Battery release latch	Slide to remove the battery.
Battery gauge	Push the button next to the LEDs to check the battery's charge.
Memory/mini-PCI access	256MB RAM (standard) upgradeable to 1GB. For information about upgrading memory, see Chapter 4 of this <i>User Guide</i> .
Security lock slot	Fits a Kensington-style cable lock for securing the unit to a desk, etc.
Hard drive bay	20GB (standard); optional 40GB and 60GB hard drive capacity
Product Identification	Serials numbers, System certifications

**CHASSIS AND
HARD TOP**

The Motion M1200 chassis is constructed of magnesium alloy, which is lightweight, durable, and easy to maintain. The Motion M-Series Hard Top Cover is molded of a tough plastic. When snapped over the Tablet PC display, it can protect the Tablet PC display when the Tablet is not in use. It snaps onto the bottom of the Tablet PC for convenient storage.

PEN

The Motion M-Series Digitizer Pen is a sensitive, electronic data-entry device designed for use with the Motion M1200 display screen. It contains no batteries and requires no external power. To help prevent loss of your Pen, you can connect it to the built-in pen tether on the Tablet PC chassis.

NOTE: For best results, we recommend that you calibrate your Pen before using it for the first time. For information about this and other Pen procedures, see Chapter 4 of this *User Guide*.

**MOTION
M-SERIES AC
ADAPTER**

The Motion M-Series AC Adapter consists of three parts:

- AC power adapter (with a right-angled connector)
- Power cord
- AC mini-plug with folding prongs for travel



CAUTION: Use only a Motion M1200 M-Series AC Adapter with the Motion M1200. This adapter should not be used to power any other electronic devices. If you do so, you may damage the accessory or other device.

**MOTION
M-SERIES
BATTERIES**

In standard configuration, the Motion M1200 ships with a 6-cell Lithium-ion battery in its battery bay. Fully charged, a new Motion M1200 standard battery can power the Tablet PC for 3-4 hours, depending on conditions and use.

Extra batteries are available from Motion Computing. Use only a Motion Lithium-ion battery in the Motion M1200 Tablet PC.



WARNING: To avoid personal injury, handle the battery with care. Do not open, puncture, short, or expose it to fire or water. Keep the battery in an ambient temperature of less than 140° F (60° C); for example, don't leave it in a closed car in hot weather for extended periods of time.

NOTE: For more information about the Tablet PC battery LEDs, see the section "Battery Status LEDs" in this chapter and for more information about battery care, see Chapter 4 of this *User Guide*.

FRONT PANEL BUTTONS

The Motion M1200 contains six buttons on the front panel. Most have two functions and some are programmable.

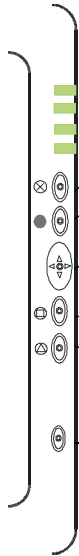
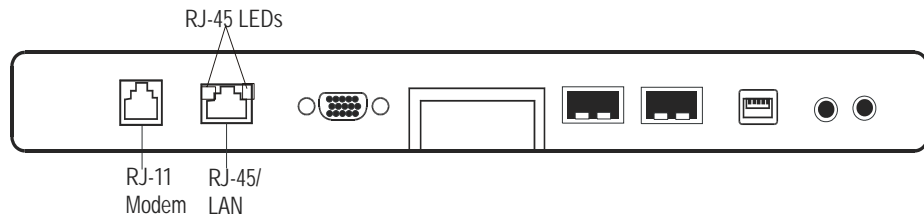


Table 2-2 Motion M1200 Button Default Functions		
Button	Primary Function	Secondary Function (Press Function + this button)
Escape ³	Same as keyboard Esc key.	Equivalent to Alt + Tab
Function ²	Function + other button activates secondary function	None
Five-way Directional Control Button ²	Works like the arrow keys on a keyboard. The center of the button works like the Enter key.	Left arrow = Shift+Tab Right arrow = Tab Up arrow = Page Up Down arrow = Page Down
Hot Key #1 ^{1 & 2}	Opens the Motion Dashboard.	Opens the Windows Journal.
Hot Key #2 ^{1 & 2}	Rotates Tablet PC display.	Opens the Tablet PC Input Panel.
Security ³	Opens the Windows Task Manager (Ctrl + Alt + Del). Also used for domain authentication or logon screen.	None

NOTE: ¹Primary function programmable. ²Secondary function programmable. ³Not programmable. For information about programming buttons, see Chapter 4 of this *User Guide*.

MODEM AND LAN PORTS


The two Motion M1200 communications ports—one for a modem, one for a LAN (network connection)—sit side-by-side on the Tablet PC.



Their functions are described below:

NOTE: The Motion M-Series FlexDock has no built-in modem port. When using a FlexDock, you must connect to the modem port on the Motion M1200 through the FlexDock opening designed for this purpose.

- **Modem** (RJ-11 port) — Built-in, V.90 modem that operates at a maximum of 56K throughput and has fax capabilities; port supports a standard phone cord connector; connect the modem only to an analog telephone jack, not to a digital telephone (PBX) network jack
- **Ethernet LAN** (RJ-45) — Used for network, cable modem, and xDSL connections

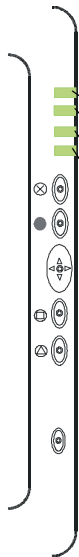
 **CAUTION:** Do not plug a standard RJ-11 phone cord into the RJ-45 port or you will damage the RJ-45 LAN port.

MOTION M1200 LEDs

The Motion M1200 contains status LEDs on the front panel and over the battery case on the bottom of the Tablet PC. These are described below:

Motion M1200 Front Panel LEDs

The four status LEDs on the Motion M1200 front panel indicate:



LED	Description	Status
Power/Stand By	Steady green	Tablet PC is on
	Flashing green	Tablet PC is in Stand By
Battery Status	See Table 2-4.	
Hard Drive	Flashing/On	Hard drive of the Tablet PC is being read or written to
Wireless 802.11b Activity	Steady or flashing green	Wireless is on
	Off	Wireless is off

Battery Status LEDs

The Motion M1200 has a “smart” battery that can communicate messages to the Tablet PC about its power status. Some are informational, others require attention.



CAUTION: To avoid personal injury, if the battery is overheated, wait until the battery cools to room temperature before recharging or replacing it.

NOTE: While the Tablet PC is running on battery power, you can check the battery status by moving the Pen over the Power/Battery icon in the System Tray, located in the lower-right corner of the Tablet PC display. This shows the number of hours of charge and the percentage of battery charge remaining.



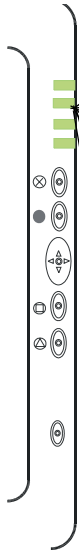
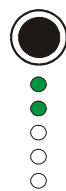


Table 2-4 Front Panel Battery Status LED		
LED	Battery Status	Action
Steady green	Battery 100% charged (AC plugged in)	None
Steady amber	Battery is charging (AC plugged in)	None
Steady red	Battery is overheated or defective.	Wait for the battery to cool. Replace the battery.
Flashing green and amber	Battery is discharging abnormally.	Replace the battery
Slow-flashing amber	10% battery charge (AC unplugged).	Immediately charge the battery to avoid loss of data.
<p>NOTE: When the battery reaches a 10% charge, the Tablet PC issues a Low Battery alarm message in addition to the LED warning. For information about modifying this alarm (you can set it to display a message or to produce an audible warning), see Chapter 4 of this <i>User Guide</i>.</p>		
Fast-flashing amber (for only a few seconds)	3% battery charge (AC unplugged)	The Motion M1200 issues a Critical Battery alarm and automatically goes into Hibernate mode.
<p>NOTE: Hibernate mode attempts to save data in any open programs to your hard drive. When you restart the Tablet PC, it returns to the same place you were before the system hibernated.</p>		
Off	<ul style="list-style-type: none"> Unit is off Battery is discharged (with AC unplugged) The battery is uninstalled 	Turn on the Tablet PC or charge or reinstall the battery

Battery Status Gauge

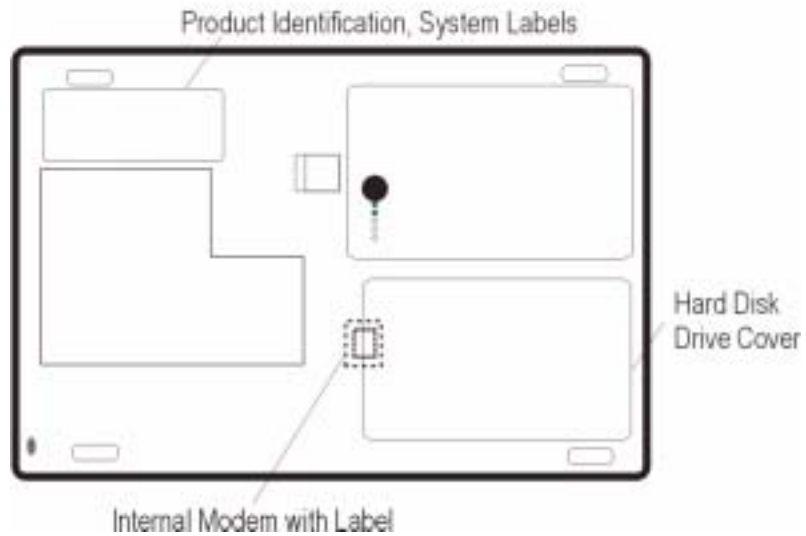


A five-LED battery gauge is located on the battery on the bottom of the Motion M1200. Each LED represents about 20% of available power. You can activate the gauge by pushing the black button next to the LEDs.

In the example shown here, the battery has about 40% of its power remaining.

LABELS

Most Motion M1200 identification and system labels are located on the bottom panel of the Tablet PC. These include serial and model numbers as well as regulatory and approval labels. Some internal components, such as the modem, contain their own approval labels.

Motion M1200 Label Locations

ACCESSORIES

You can order the following accessories for the Motion M1200 from the Motion website at www.motioncomputing.com/accessories.

NOTE: You should order the Motion M-Series FlexDock, batteries, and Digitizer Pens from Motion Computing.

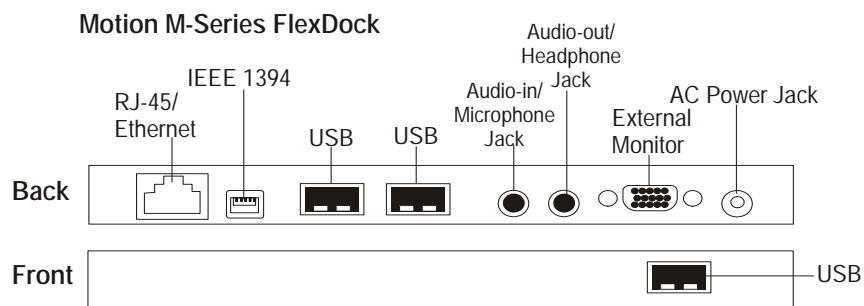
Motion M-Series Desktop Stand

The Motion M-Series Desktop Stand is an easel-like device that holds the Motion M1200 in either portrait or landscape mode. You can open the desktop stand to different widths to change the display angle: the wider you open the stand, the more the Motion M1200 tilts back.

Some connectors may interfere with Motion M1200 placement in the Desktop Stand. If you regularly connect several accessories to your Motion M1200, consider obtaining a Motion M-Series FlexDock.

Motion M-Series FlexDock

The Motion M-Series FlexDock is a desktop docking station that provides a convenient interface for the Motion M1200 at your desktop. It contains interfaces for RJ-45/Ethernet, three USB connectors, a IEEE 1394 connector, headphone and microphone jacks, and a VGA monitor connector. These are shown in the diagram below.



- Easily docks and undocks with the Tablet PC
- Automatically senses and adjusts the Tablet PC display when you rotate the Tablet PC 90 degrees between Primary Landscape and Primary Portrait.
- Adjusts to support the Tablet PC from 0°- 90° for viewing and writing
- “Grab-and-Go” capability lets you safely remove the Motion M1200 from the FlexDock without turning the system off or putting it in Stand By mode.

NOTE: For more information about installing the FlexDock, see Chapter 4 of this *User Guide* or the *Installation Card* packaged with the FlexDock.

Motion M-Series Mobile Keyboard with Touch Pad

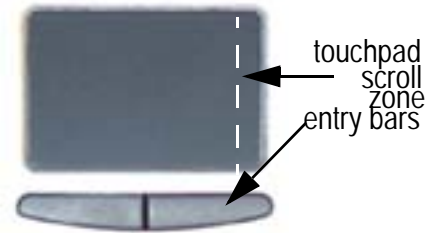
The Motion M-Series Mobile Keyboard with Touch Pad is a USB keyboard that plugs into any USB port on the Motion M1200 or into the Motion M-Series FlexDock. When you connect the Keyboard for the first time, the Windows XP operating system finds and loads the hardware driver.



IMPORTANT: The first time you start your Tablet PC, you must connect a standard USB keyboard to the Tablet PC to complete the initialization of the Windows XP operating system. For the steps in this procedure, see Chapter 4 of this *User Guide*.

The Touch Pad on the keyboard has a scroll zone similar to the scroll bar along the side of a window.

- Scrolling — Press on the right edge of the Touch Pad surface and drag your finger up, to scroll up; or down, to scroll down through a document
- Deleting text — Line the cursor over the text you want to select, tap once with your finger to insert the cursor in the text (the cursor will begin to blink). Tap again to select a single word; double-tap to select a whole line. Select Delete from the keyboard. (Or, tap the right entry bar, which opens a drop down menu. Select Cut.)



Motion M-Series Hard Top Cover and Portfolios

- The Motion M-Series Hard Top Cover is constructed of molded plastic and is designed to protect the display when the Tablet PC is not in use. One ships with each Tablet PC. It conveniently stores on the bottom of the Tablet PC when in use.



The illustration below describes how to attach and remove the Hard Top Cover.



To attach the Hard Top Cover:

1. Align the tabbed edge of the Hard Top and the button end of the Tablet PC.
2. Align the smooth edges of both together.
3. Snap the Hard Top on the Tablet PC until it clicks into place.

To remove the Hard Top Cover:

1. With your fingers, gently pry the tabbed edge of the Hard Top from the Tablet PC.
2. Snap the Hard Top to the bottom of the Tablet PC for storage.

- The Motion M-Series Standard Portfolio is a lightweight cover with a front flap that folds over and snaps into place, with a hand strap in the flap for a secure hold. It also has a shoulder strap and two pen holders.
- The Motion M-Series Executive Leather Portfolio is made of high-quality black leather with shoulder strap and foldover cover and features a sleeve for papers, a business card holder, and pen holder.
- The Motion M-Series Slip Case has a clear cover to protect the display, zippered access to side ports, and a hand strap on the back.



Executive Leather Portfolio

Motion M-Series Optical Disk Drives

Motion M-Series Optical Disk Drives are optional equipment for the Motion M1200 Tablet PC. Depending on the Optical Disk Drive you purchase, these offer CDROM, CDRW, and DVD capabilities.

For information about installing these Drives, see the documentation packaged with each Optical Disk Drive. For general information about using your Optical Disk Drives, see Chapter 4 of this User Guide.

256MB and 512MB Memory Upgrade Modules

Additional memory modules improve performance and increase the battery life of your Tablet PC.



NOTE: For information about installing additional memory upgrade modules, see Chapter 4 of this *User Guide* or the *Installation Card* packaged with the upgrade module.

The following configurations are supported:

Slot A	Slot B	Total Memory
256MB	256MB	512MB
	512MB	768MB
512MB	256MB	768MB
	512MB	1GB

PC Card Slot

The PC card slot, located on the Power Switch side of the Tablet PC, holds one Type-II PC Card for networking, memory expansion, or accessory connection.

1. To install the PC card, insert it label-side up.
2. To remove the PC card, push the button next to the slot until it pops out, then push it again to eject the card.

NOTE: The Tablet PC ships with a plastic blank in the PC Card slot. When the slot isn't in use, leave the plastic blank in place.

Mini PCI Card (Wireless)

The Tablet PC is designed to accept a mini-PCI card for wireless communications.

NOTE: Most Motion M1200 Tablet PCs ship with an 802.11b mini-PCI card installed.

For information about wireless operations, see Chapter 4 of this *User Guide*.

Chapter 3

Motion M1200 Tablet PC Software

Pre-loaded on your Motion M1200 Tablet PC is the Windows XP Tablet PC Edition operating system plus additional software applications, drivers, and utilities. These help you personalize your Tablet PC and make the most of its features. This chapter describes the CDs, software, applications, and software features provided with your Tablet PC.

NOTE: For additional information about Motion M1200 software applications, from Start, tap Using Your Motion M1200, then Explore the Motion M1200 applications.

SOFTWARE CDs

Depending on the configuration you order, the following CDs may be shipped with your Motion M1200:

- Motion M1200 System Recovery CDs
- Motion M1200 Utilities and Drivers CD
- Motion M-Series Application CD

IMPORTANT: For additional information about initial installation of software on the Motion M1200, see the section “Installing Initialization Software” in Chapter 4 of this *User Guide*.

Motion M1200 Recovery CDs

These CDs contain a complete re-install of the Windows XP Tablet PC Edition operating system, all drivers, utilities, and applications. They include Readme.txt and Revision.txt files with installation instructions, as well as information about software changes.

Use the Recovery CDs when your system is completely down and you must completely re-install. This procedure will overwrite everything on your Motion M1200. If possible, back up your data files onto a backup CD or diskette before running this procedure.

To use the restore and recovery CD:

1. Turn on the Motion M1200 Tablet PC.
2. If possible, back up your data files onto a backup CD or diskette.
3. Insert the Recovery CD-1 of 2 (Windows XP Professional Service Pack 1 CD) in your CDROM drive. The system should automatically begin installing the operating system.
4. Follow the onscreen instructions for entering any information.
5. When prompted, insert the Recovery CD-2 of 2 (Windows XP Professional CD 2).
6. Follow the onscreen instructions for entering any information.

Motion M1200 Utilities and Drivers CD

The Motion M1200 Utilities and Drivers CD contains separately installable drivers and utilities. A Readme.txt file is included on the CD that contains instructions for installing each driver and utility.

To install utilities and drivers:

1. Turn on the Motion M1200 Tablet PC.
2. Insert the Utilities and Drivers CD into your CDROM drive.
3. On the CD and drivers file, browse to and open the Readme.txt file for installation instructions.
4. Follow the installation instructions. In most cases, this involves locating the executable file (.EXE) and running it from the CD while following the onscreen instructions.

Motion M-Series Application CD

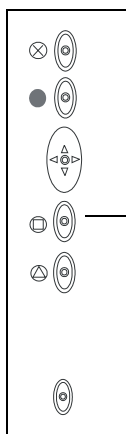
The Motion M-Series Application CD contains additional applications for the Motion M1200. To see the most current applications available, go to the Motion Computing website at www.motioncomputing.com. From the Products category, select Software to view a list of Motion Computing software, third-party applications to purchase, as well free applications.

MOTION M1200 APPLICATION SOFTWARE

The Motion M1200 contains software applications, some developed by Motion Computing, to enhance your Tablet PC.

Motion M1200 Dashboard

An exclusive Motion Computing design for your Tablet PC, the Motion Dashboard makes many Tablet PC operations easy to identify and puts them in a single location for convenient access.



To display the Dashboard, press Hot Key #1.

Motion M1200 Dashboard features are described in the following table:

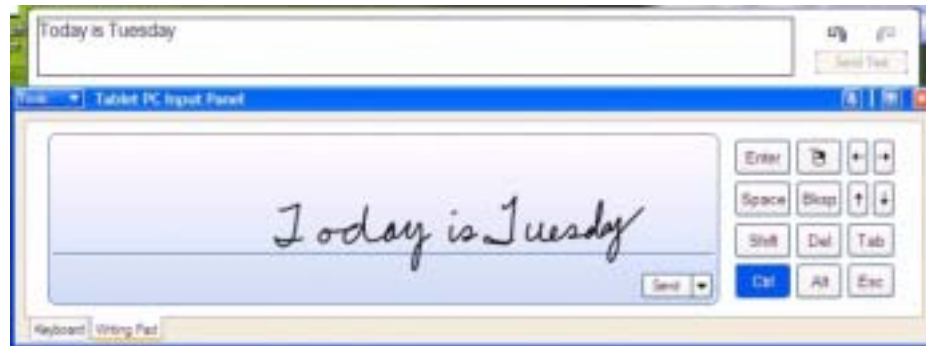
Table 3-1 Motion M1200 Dashboard Features	
Feature	Description
Speaker Volume	Adjusts the speaker volume. The Advanced option adjusts or mutes the volume of the Tablet PC Wave, SW Synth, and PC Speaker.
Display Brightness	Adjusts the display's brightness level
Calibrate	Opens the Pen Calibration utility
Display Rotation	Changes the orientation of the Tablet PC display (portrait/landscape)
Graphics Properties	Sets properties on the Intel(R) Graphics Controller, which include: Devices; Color; Schemes; Hot Keys; Rotation; OpenGL; Information
Power Management	Lets you set different Power Schemes and functions for the Power Button. Access to the Power Option Properties window where you can set Power Schemes, Alarms, Power Meter, Advanced, and Hibernate.
Wireless Operation	Enables/Disables the optional mini-PCI wireless LAN. Connection Properties include General (a description of the connection) and Advanced (Internet connection options)
Battery	Displays battery status.
Quick Keys	Performs the keyboard equivalent of various keystrokes. Slide bar lets you view addition Quick Keys.
Shortcuts	Provides shortcut access to designated software programs, e.g. Windows Journal, Sticky Notes, MSN Messenger, Calculator, Tablet and Pen Settings, Control Panel.
Input Panel & Keyboard	Opens the onscreen Tablet PC Input Panel for typing and writing.
Stand By	Puts the Motion M1200 in low-power Stand By mode for temporary suspension from which you can quickly resume your Windows session.

Tablet PC Input Panel

To open the Tablet PC Input Panel, tap on the Tablet PC Input Panel icon located next to the Start button. From this window, you can enter data by hand, by soft keyboard, or by voice.

The illustration below shows the Tablet PC Input Panel with the Text Preview window open. You can select this option from the Tools drop-down menu.

NOTE: For more information about the Tablet PC Input Panel, see Chapter 4 of this *User Guide*.



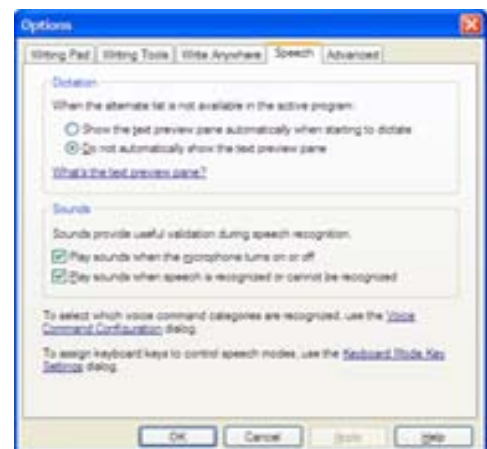
IMPORTANT: To view the text you write or type in the Tablet PC Input Panel, you must open another application, such as Notepad, Wordpad, or install Microsoft Office (ordered separately; this works with XP Pack for Tablet PC-- called Pen Extensions, which is already loaded on your Tablet PC). Otherwise, your text will be transferred to the Text Preview area (if it is open), but not to another application since none is available to accept the input. If the text preview window isn't open, your text will disappear from the display window after a few seconds.

NOTE: For security and accuracy when entering passwords or other confidential text, we recommend that you use the soft keyboard on the Tablet PC Input Panel instead of the writing pad.

Speech and Voice Recognition

The Motion M1200 is designed to accept and interpret the human voice, both for dictation and for keyboard-equivalent voice commands.

NOTE: For information about setting up speech recognition through the Tablet PC Input Panel, see Chapter 4 of this *User Guide*.

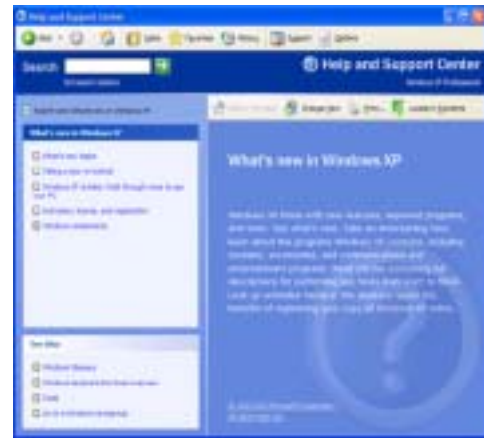


**WINDOWS XP
TABLET PC
EDITION**

The Microsoft operating system is a fully-functioning version of Windows XP Professional and adds the following pen-based computing functions:

Table 3-2 Windows XP Pen Functions	
Tablet and Pen Settings	Set properties for the Motion M-Series Digitizer Pen, Motion M1200 buttons, and display screen
Tablet PC Input Panel	Enter data with its writing pad, soft keyboard, and voice recognition
Windows Journal	Hand-write documents, then turn them into text or image files
Sticky Notes	Make a quick note with your pen or voice and drop it into another program
Document annotation	Insert handwritten notes into Word documents and other programs
Enhance speech and voice recognition	Record voice messages, take dictation for entry into text documents, provide voice commands to the system, etc.
Inkball	Practice and master pen input with this game of strategy

NOTE: For information about the Windows XP operating system, tap Start, Help and Support Center, then What's New in Windows XP. Or, read the *Windows XP Start Here* booklet packaged with your Tablet PC.



Chapter 4

Using Your Motion M1200 Tablet PC

This chapter describes various procedures, settings, and functions you can perform with the Motion M1200 Tablet PC.

INITIALIZING MICROSOFT WINDOWS

All Motion M1200 Tablet PCs come with pre-installed software applications and drivers, including those for the Windows XP Tablet PC Edition operating system. The first time you start your Tablet PC, you must initialize Windows XP. This initialization is described in this section.

Required

- A USB keyboard (for inputting information to initialize the Microsoft Windows XP for Tablet PC operating system)
- Computer name (you can create this yourself or obtain one from your system administrator)

Optional

- Internet access
- Motion M-Series AC Power Adapter
- Administrative password
- Description of your computer
- Company name
- Network settings
- Domain name
- Names of the people who will be using this Tablet PC
- Microsoft Office Product Keys (if you are going to install any Microsoft Office products, such as Word, Excel, PowerPoint)

Windows Initialization Procedure

IMPORTANT: You do NOT need Internet access to initialize Windows. When the Windows initialization procedure prompts you for this information, you can either Skip the step or select the option that lets you set up Internet access later.

1. Before you start the Motion M1200 Tablet PC, connect any USB keyboard to a USB port on the Tablet PC. This lets you enter information through the keyboard or keyboard touch pad. (The Pen does not function until you complete the Windows initialization.)
2. (Optional) Connect your Tablet PC to AC power to ensure continuous power during this initialization procedure and in case your battery is low.
3. Briefly slide the Power switch to start the Motion M1200 Tablet PC. After a few minutes, the “Welcome to Microsoft Windows” screen appears.
4. Move the cursor with the keyboard touch pad and select Next. The End User License Agreement for Microsoft Windows XP appears.

NOTE: You can also use the Tab key, arrow keys, Enter keys, and space bar on the keyboard to select and enter data. This installation describes using the keyboard touch pad.

5. To accept the End User License Agreement and continue the installation, select “Yes, I Accept.” Then select Next.
6. Type in the name of your computer (Tablet PC name). Choose the name provided by your network administrator or, if one isn’t available, a name of your choice.
7. (Optional) Type in a description of your computer. Select Next.
8. (Optional) Enter the Administrator password (from your network administrator) or specify a password for yourself as Administrator. If you don’t have an Administrator password, just select Next.
9. (Optional) Type in the domain name (from your network Administrator). If you don’t have a domain name, select “No,” then Next.
10. (Optional; you do not need Internet access to initialize Windows) Check the option for how this computer will connect to the Internet. Select Skip to set up Internet access later.
11. Select “Yes to Ready to activate Microsoft Windows XP.”
12. (Optional) Ready to register with Microsoft. Skip this screen if you don’t want to register now. If you choose to register, you will need Internet access. Select “No, not at this time.”
13. You may get a message either that your computer is not connected to the Internet or asking if you want to set up Internet access. You do not have to set up Internet access to initialize Windows. Select Skip.
14. Type in your name in the “Your name” field. If others will be using the Tablet PC, type in their names also (up to five total). These messages appear:

Thank you! Congratulations, you’re ready to go!

15. Select Finish. These messages appear:

Windows XP
Please wait.
Windows is starting up...
Loading your personal settings
Applying your personal settings

IMPORTANT: It is not necessary to connect to the Internet to activate your system.

16. Windows will load and may discover and install new hardware.

When prompted, answer Yes or OK to install all hardware.

17. When the Tablet PC Tutorials appear, we recommend that you take them. However, you can access them later if you wish.

This completes the Windows XP initialization process. The Tablet PC is ready to use and the Pen is operational.

Microsoft Office Registration

If you ordered the Microsoft Office XP Professional software, it is already installed on your system. To activate it, follow these steps:

1. Install the Microsoft Office software from the CD provided.
2. Open a Microsoft Office application, such as Microsoft Word.
3. A screen appears, prompting you to enter your User name, Initials, Organization, and the 25-character Product Key. The Product Key is printed on the Microsoft Office CD packaged with your Tablet PC.
4. Follow the onscreen messages to complete the Microsoft Office installation.

STARTING AND STOPPING THE MOTION M1200 TABLET PC

Starting

You can start the Tablet PC by briefly sliding the Power switch (the ridged button on the right side of the Tablet PC). If you are connected to AC power, the Power LED turns solid green and the Hard Disk Drive (HDD) LED flashes green. Then Windows XP launches.

When you start the Tablet PC, the Windows XP Tablet PC Tutorials screen appears. If you don't want this to appear each time, you can check "Do not show me this again." We recommend that you run the tutorials, which take just a few minutes. You can return to the Microsoft Tutorials from Start, Using Your Motion M1200 Tablet PC.

Stopping

You should shut down the Tablet PC by selecting Start, Turn Off Computer.

IMPORTANT: You can force a shutdown by pressing and holding the Power switch for about 5 seconds. A forced shutdown should only be used when the system is completely unresponsive to software commands. If you have any

applications open or any unsaved work, Windows XP prompts you to save it. You will lose any unsaved work.

OPENING THE MOTION DASHBOARD

In the following sections, you will be required to open the Motion Dashboard. You can access the Motion Dashboard by pressing Hot Key #1 on the Tablet PC chassis.



You can also access the Dashboard by first selecting Start, then All Programs, and finally Motion Resources, where the Dashboard option appears.

The Motion Dashboard offers many Tablet PC functions in a convenient location on your display.



USING STAND BY OR HIBERNATE

You can configure the Tablet PC's power options to activate either low-power Stand By or Hibernation modes. The differences between these are described below:

- **Stand By mode** — Greatly reduces Tablet PC power consumption, but Tablet runs on battery if not connected to AC power. Before shutting down, Stand By saves your settings so you can later resume work where you left off. Choose Stand By when you plan to return to work within a few minutes or hours; the Tablet PC restarts from Stand By within only a few seconds.
- **Hibernate mode** — Completely shuts down the Tablet PC. However, like Stand By, Hibernate saves your settings so you can later resume work where you left off. Choose Hibernate when you plan to stop work for longer periods, such as overnight. The Tablet PC restarts from Hibernate in slightly more time than from Stand By.

Setting Up Stand By or Hibernate with the Power Switch

The Tablet PC comes with the Tablet PC set to shut down when you slide the Power switch. You may want to be able to enter Stand By or Hibernate with the Power switch:

1. Open the Motion Dashboard.
2. On the Dashboard, under Power Management, tap the down arrow by the Pwr Button.
3. From the drop-down menu, select Stand by or Hibernate, as desired.
4. Select OK.

Accessing Standby from the Motion Dashboard

To immediately put the Tablet PC in Standby, tap the Stand By button on the Motion Dashboard.

NOTE: You can access Stand by and Hibernate in other ways. Another quick method is to select Start/Turn Off Computer. In the pop-up window, there are three options: Stand By, Turn Off, and Restart. You can select Stand By here or press the Shift key to toggle to Hibernate. Then simply select the desired action.

Returning from Standby or Hibernate

To return from Standby or Hibernate, briefly slide the Power button until the display comes on. Wait until the logon screen (or Windows desktop) is displayed. The Tablet PC shows the number of programs running. Tap on your user name to resume Tablet PC operations.

OPERATING THE MOTION M-SERIES DIGITIZER PEN



The Motion M-Series Digitizer Pen contains internal electronics that make the Pen the only way you can write, tap, or input on the Motion M1200 display. Finger-tapping or writing with a PDA stylus has no effect. The Pen contains a Pen function button, used for right-clicking (like a mouse) and a small opening near the end for attaching a Pen tether. The Pen also comes with replacement Pen tips and a replacement tool, shown here. For information about replacing the Pen tips, see “Replacing the Pen Tips” in this chapter.

Notations for using Motion M-Series Pen, which are found throughout this *User Guide*, are described below:

- Tap — Tap the Pen on the Motion M1200 Tablet PC display, without pressing the function button on the Pen
- Double-tap — Double-tap the Pen on the display, without pressing the function button on the Pen
- Right-click — Press the function button on the Pen and tap the Pen on the display (equals a mouse right-click). For more information about using the Pen function button, see the section “Writing with the Pen” in this chapter.
- Press and hold — Press and hold the tip of the Pen to the display, without pressing the function button on the Pen (equals a mouse right-click)
- Tap and drag — Tap and drag the Pen on the display
- Select/Highlight — Tap on the item on the Tablet PC display with the Pen to activate the function

Calibrating the Pen

You should calibrate your Pen the first time you use the Motion M1200, then at other times if the onscreen pointer doesn't seem to line up with the Pen tip. Each user who logs onto the Tablet PC should calibrate the Pen; the Tablet

PC stores these on a per-user basis. Calibration ensures the accuracy of the Pen and adjusts the Tablet PC display for different users.

To open the calibration program:

1. Open the Motion Dashboard and tap the Calibrate button. Or double-tap the Tablet and Pen Settings icon in the System Tray, located in the lower right-hand corner of the display window. This opens the Tablet and Pen Settings window.



NOTE: This icon may be hidden in the System Tray. Tap the System Tray down-arrow to open all hidden icons.

2. Choose the Settings tab.
3. Tap Calibrate while holding the Pen in a normal writing manner.
4. Carefully align the Pen point *precisely* in the crosshairs in the calibration display for best performance.
5. Rotate the Tablet PC display and repeat this for each orientation (0°, 90°, 180°, or 270°).



Writing with the Pen

The first time you pick up the Pen, you'll notice how light it is (it has no internal battery), its unusual tip, and its function button. Here are some hints for using the Pen:

- You can hold the Pen like any other writing pen, except that you should place your fingers on either side of the Pen function button so that you don't inadvertently press it as you write. Pressing the function button while tapping the Pen on the display is like right-clicking with a mouse and will pop-up menus.
- Practice pressing the Pen function button with both your index finger and thumb to see which you prefer.
- Relax your grip. Only a light touch is needed to write with the Pen.
- With a little practice, you will learn how to tap on the Tablet PC display to activate buttons and menus.
- The more precise your handwritten input, the more accurate the Tablet PC will be converting it to text. You can use printed or cursive handwriting, but a mixture of upper and lowercase letters works best.
- When you hold the Pen over the Tablet PC display, a pointer (small dot) appears under the Pen tip on the display and moves with the Pen on the display. To select something on the display, line up this pointer before you touch (tap) the Pen to the display surface. The digitizer under the Motion M1200 display reads the position of the pointer, not where you touch the Pen to the display.



CAUTION: Do not write on the Tablet PC display with ink pens or other pointed objects that could damage it.

A comparison of the Pen and mouse operations is shown below:

With a Mouse	With the M-Series Digitizer Pen
Point and click	Point and tap the Pen on the display.
Double-click	Double-tap the Pen on the display.
Click-and-drag	Tap-and-drag the Pen on the display.
Right-click	Press the Pen button while tapping, or press and hold the Pen on the display.

Deactivating the Right-Click Function

You may want to deactivate the right-click function of the Pen:

1. Double-tap the Tablet and Pen Settings icon in the System Tray, located in the lower right-hand corner of the display window. This opens Tablet and Pen Settings. (You can also access this through the Windows Control panel.)
2. Select the Pen Options tab.
3. Uncheck the option Use pen button to right-click.
4. Tap Apply.



Adjusting Pen Properties

You may want to adjust the settings on the Pen, such as which hand you write with, the menu location, or other pen options.

To access Pen properties:

1. Repeat Steps 1 and 2 above.
2. Select the Settings tab.
3. Change the Handedness or Menu location, as desired.
4. Tap Apply.

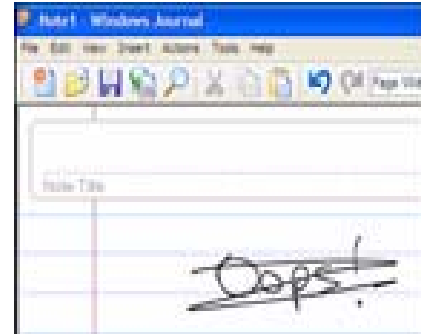
Learning Pen Gestures

You can use pen gestures to perform some actions:

NOTE: Gestures work primarily in the Tablet PC Input Panel and the Write Anywhere feature. For more information about gestures, gesture symbols, and for handwriting

tips, open the Tablet PC Input Panel, the Tools menu, then select Help, Help Topics. Under Tips and Tricks, select Tips for entering text. You will find a Gesture reference.

- **To Open the Tablet PC Input Panel** — Holding the tip of the pen above the screen, quickly move the pointer back and forth several times.
- **To Backspace** (erase the previous character) — Quickly draw a right-to-left line on the display surface
- **To Erase** — Draw a short, wide “Z” from left to right across what you want to erase. (It may take some practice to master this gesture.) The erase gesture works in the Windows Journal, Tablet PC Input Panel, and the Write Anywhere (an option of the Windows Journal).

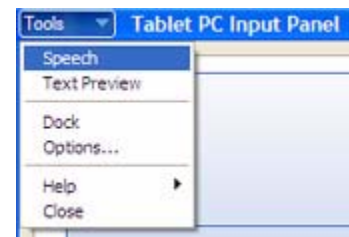


USING THE TABLET PC INPUT PANEL WINDOW

To access the Tablet PC Input Panel window, tap the Tablet PC Input Panel icon. This window contains several writing and typing options:



- Writing Pad and Virtual Keyboard — Toggle the tabs at the bottom-right corner of the this window to switch between these options
- Preview window — From the Tools menu, select Text Preview for an extended preview window
- Relocate the Tablet PC Input Panel — From Tools, uncheck Dock
- Change the amount of delay to transfer writing, thickness of the ink, or the number of lines on the Panel — From Tools, select Options
- **&** — Displays a set of keyboard symbols; the **↑** (up arrow) — hides the Input Panel
- **Send** — Lets you send handwritten text as Text or as Ink if the program accepts it



NOTE: For more information about Tablet PC Input Panel functions, see the Help menu under Tools on the Tablet PC Input Panel window.

“Sending as Text” on the Tablet PC Input Panel

To hand write or type on the keyboard of the Tablet PC Input Panel and transfer the input to another application:

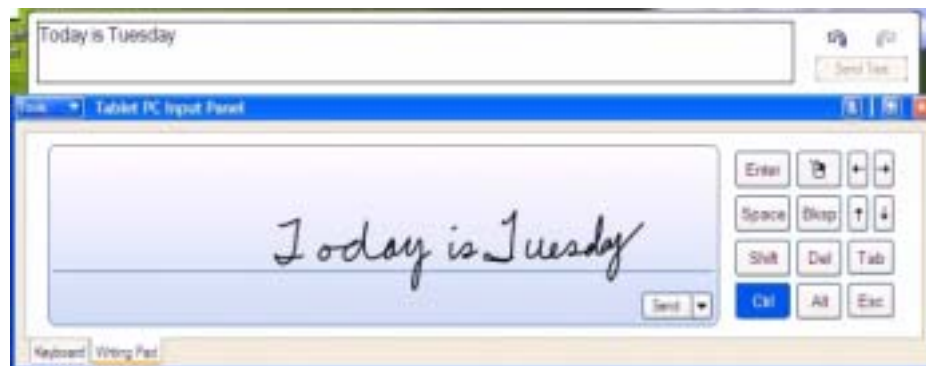


1. Open the Tablet PC Input Panel.
2. Tap the down arrow beside Tools to open the Input Panel’s preview window.
3. Open another application, such as Notepad, Wordpad, or Microsoft Word to write your input to. If you don’t open this second application, your input will disappear from the display in a few seconds.

IMPORTANT: Windows Journal will convert handwritten input and typing to text if you Insert a Text Box on the Journal display or if you lasso the text and select Convert handwriting to text from the Actions menu.

4. Tap Text Preview to open the preview window. The Tablet PC Input Panel will now automatically convert your handwriting or keyboard input to text.

NOTE: You can send drawings from the Tablet PC Input Panel to some applications (such as Wordpad or Microsoft Word), but not to the Text Preview window. If you draw from the Tablet PC Input Panel with the Text Preview window open, Windows XP tries to interpret the drawing as text and may enter nonsense characters.



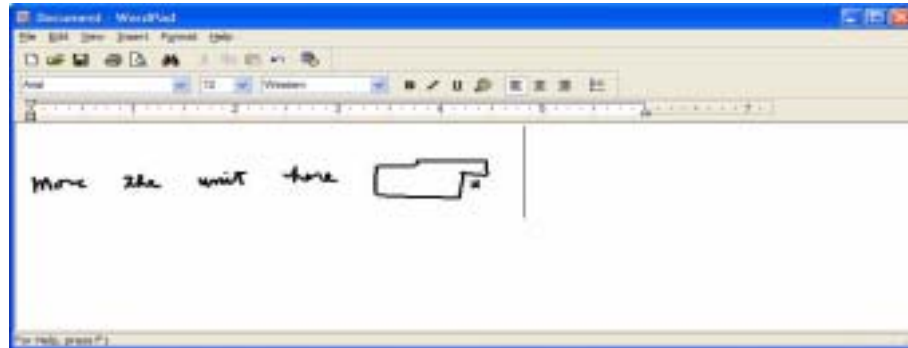
IMPORTANT: For security and accuracy when entering passwords or other confidential text, we recommend that you use the soft keyboard on the Tablet PC Input Panel instead of writing this restricted information on the Writing Pad.

“Sending as Ink” (Handwriting/Drawings) on the Tablet PC Input Panel

To transfer ink input to another application:

1. Open the Tablet PC Input Panel.
2. Close the Text Preview window by deselecting it from Tools.

3. Open another application, such as Notepad, Wordpad, or Microsoft Word to write your input to. If you don't open this second application, your input will disappear from the Tablet PC Input Panel display in a few seconds.
4. Tap the down arrow beside Send.
5. Enable Send as Ink. (If the application you have open doesn't accept ink input, this option will be grayed out.)
6. Create the text or simple drawing you want to send as ink.



NOTE: To increase the size of the text and drawings, highlight these on screen, then change the font size. Wordpad and Notepad don't allow you to reset the default font size, but once you increase the font size, later inputs will retain the new sizing.

WRITING AND DRAWING IN THE WINDOWS JOURNAL

If you write or draw on the Windows Journal, your input is preserved on the Tablet PC display until you either save or delete it. The Motion M1200 saves handwritten messages and drawings exactly as you create them. You can create more complex diagrams and drawings in this application than in the Tablet PC Input Panel.



**CREATING
FORMS AND
EDITING IN THE
WINDOWS
JOURNAL**

You can create forms or edit documents from many formats (such as Word, Adobe® Acrobat) by creating a Journal Template. You can then write on your new “form” or exchange edits with others.

1. Create or open the desired document on your Tablet PC.
2. Tap Print.
3. Select the Journal Note Writer as the printer.
4. Tap Print.
5. On the Save As screen, type in a name for the document.
6. Tap Save. This saves your document as a Windows Journal template to My Documents/My Notes.

NOTE: Windows Journal may take a few minutes to save, but even documents of 50 pages and more will convert to a Journal Note Writer file.

7. Open the Windows Journal, then open your document. (If View Note is checked at the bottom of the Save As window, Journal opens automatically and displays your document.)
8. Write with your Pen on this document as you would any other Journal document (fill in your “form” or make your edits).
9. Save your document with a new file name to preserve your edits.

You can reuse and save this document as many times as you want.

STICKY NOTES

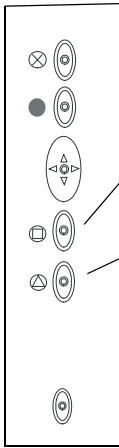
Sticky Notes are a convenient place to store things like names, phone numbers, simple maps, or other information that you would normally put on a paper note. They can also be used to record voice notes.

Sticky Notes are kept in a numbered stack and can be browsed, copied, deleted, or exported to another program. The text notes can even be dragged and dropped to another program or to your desktop (however, you can't drag the voice notes to another program or the desktop).



**CHANGING
SCREEN
ORIENTATION**

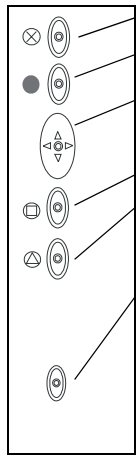
To change the display orientation from landscape-to-portrait (horizontal-to-vertical) or to secondary landscape (180° from the default) or secondary portrait (270° from the default):



- From the Motion Dashboard
 1. Press Hot Key #1 on the Motion M1200 chassis to open the Motion Dashboard.
 2. Select from the rotation options: 0°, 90°, 180°, or 270°
- From the Tablet PC chassis
 1. Press Hot Key #2 on the Motion M1200 chassis. Each time you press the key, the display rotates 90°.
 2. Rotate the display to the desired orientation.
- From the Tablet and Pen Settings Screen
 1. Tap the Tablet and Pen Settings icon on the System Tray, located at the bottom right of the display window. Or, go to the Control Panel and select the Tablet and Pen Settings icon.
 2. From the Tablet and Pen Settings window, select the Display tab.
 3. Tap the down-arrow next to Orientation.
 4. Select the desired orientation: Primary landscape, Primary portrait, Secondary Landscape, Secondary portrait.

**CHANGING
BUTTON
PROPERTIES**

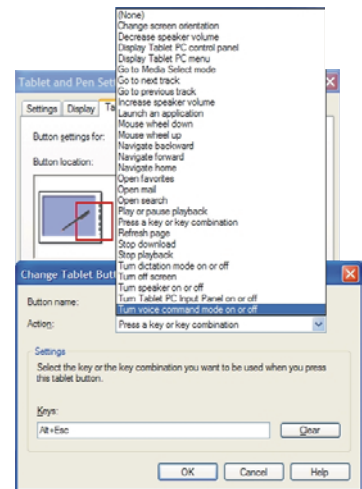
You can reprogram the Tablet PC buttons for other functions. The default button settings of all the buttons are described in Chapter 2 of this *User Guide*.



- Escape button (Secondary function is programmable)
- Function button (not programmable)
- Five-way directional control buttons (Secondary functions are programmable)
- Hot Keys 1 & 2 (Primary and Secondary functions are programmable)
- Security (Ctrl+Alt+Del) not programmable)

To change the default button properties.

1. Double-tap the Tablet and Pen Settings icon in the System Tray, located in the lower right-hand corner of the display window. Or, go to the Control Panel and select the Tablet and Pen Settings icon. This opens the Tablet and Pen settings window.
2. Choose the Tablet Buttons tab.
3. Highlight the button you want to reprogram. The button being programmed turns red.
4. Select Change.
5. On the Change Button Functions window, tap the down-arrow beside Action for a selection list.
6. Select an new action from the list.



NOTE: For some actions, you only need to select the action to change the button property. For others, such as to launch a program, you must browse and find the program; or, to set up a key combination, you must press a sequence of keys. You can also Reset the button defaults whenever you want.

7. Select OK. The list of actions should now display the new action for the button you reprogrammed. You can also Reset the defaults.

ADJUSTING BRIGHTNESS

You can adjust the brightness level of the Motion M1200 display.

- From the Motion Dashboard
 1. Open the Motion Dashboard.
 2. Adjust the desired brightness level on the Display Brightness slider.



- From the Tablet and Pen Settings Window
 1. Double-tap the Tablet and Pen Settings icon in the System Tray, located in the lower right-hand corner of the display window. Or, go to the Control Panel and select the Tablet and Pen Settings icon. This opens the Tablet and Pen settings window.
 2. Tap the Display tab.
 3. Adjust the Brightness slider at the bottom of this window. You can have a different setting when running on AC power versus battery.



CONNECTING THE APPROPRIATE AC POWER ADAPTER

You can operate the Tablet PC from external power through the Motion M-Series AC Adapter. This adapter was designed for the Tablet PC and should only be used with the Tablet PC. Other accessories may have their own power adapters.



CAUTION: Before you plug an AC adapter into the Tablet PC or into an accessory, make sure you are using the correct AC power adapter (the one that came with the Tablet PC or the accessory). The Tablet PC has an identifying label attached to the cord of its AC power Adapter. Leave this label attached to ensure you always connect this AC power Adapter only to the Tablet PC. If you connect this adapter to an accessory, you may damage the accessory.

READING BATTERY POWER

Reading Battery Power from the Tablet PC Display

To check the battery power, you can move the Pen over the Power/Battery icon on the System Tray at the bottom-right corner of the Tablet PC display. This shows you the number of hours of battery power and the percentage of battery power left. (The blue area on the battery icon shrinks as the battery runs down.)



Reading Battery Power from the Battery Gauge

Turn the Tablet PC over to view the battery gauge on the bottom of the Tablet PC. Press the button next to the underside battery gauge. If all five LEDs are green, the battery is fully charged.

READING THE POWER METER

You can check your power settings on the Power Meter:

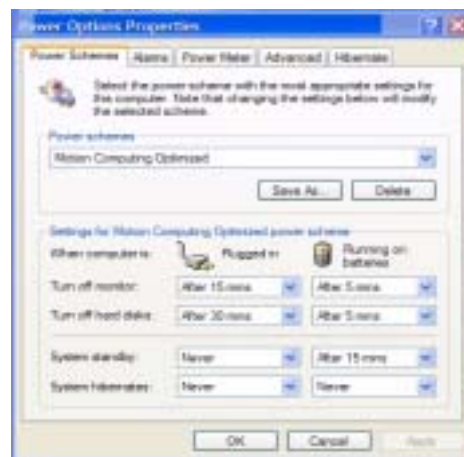
1. Right-click the Power/Battery icon in the System Tray, located in the lower right-hand corner of the display window, until Adjust Power Properties or Open Power Meter is displayed. Or, go to the Control Panel and select Power options.
2. Tap Adjust Power Properties to open the Power Options Properties window. The following options are available:
 - Power Schemes, Alarms, Power Meter, Advanced, Hibernate

CHANGING POWER SCHEMES

Creating a New Power Scheme

The Motion M1200 is configured with the default power scheme “Motion Computing Optimized” that optimizes performance and battery life. You can create different power schemes with different battery and AC power settings.


1. Right-click the Power/Battery icon in the System Tray, located at the bottom right of the Tablet PC display window until Adjust Power Properties or Open Power Meter is displayed. Or, go to the Control Panel and select Power options.
2. Tap Adjust Power Properties to open the Power Options Properties window.
3. The window opens to Power Schemes.
4. Change the settings to the desired power configuration.
5. Tap Save As and enter a name for the new scheme.
6. Tap Apply.



NOTE: We recommend that you create new power schemes instead of overwriting the default (Motion Computing Optimized) so you can reactivate it later.

Setting Up Max Battery Mode

Max Battery mode prolongs the battery’s charge. For example, when not connected to AC power, this option turns the monitor and hard disk drive off after 5 minutes, puts the system in Stand By after 15 minutes, and in Hibernate after 2 hours of inactivity. Running on AC power has other power options.

1. Right-click on the Power/Battery icon in the System Tray, located in the lower right-hand corner of the display window. Tap Adjust Power Properties in the menu. This opens Power Options Properties. Or, go to the Control Panel and select Power options. 
2. Under Power Schemes, tap the down arrow to display a list of schemes.
3. Select Max Battery as your power scheme.
4. Tap apply.

CHARGING THE BATTERY


When you connect the Tablet PC to AC power with the battery installed, the system automatically charges the battery until it reaches full charge (100%).

The Battery Status LED glows steady amber while the battery is charging and changes to steady green when charging is complete.



WARNING: To avoid personal injury, if the battery is overheated, wait until it cools to room temperature before recharging or replacing it with another battery.

To charge the battery at any time, including while you're working:

1. Plug the AC power adapter into the Motion M1200, then into a wall outlet or power strip. (Completely recharging the battery may take up to two hours, although the battery reaches an 80% charge in much less time.)
2. To check the battery power, move the Pen over the Power/Battery icon. This shows you the number of hours of battery power and the percentage of battery power left. (The blue area on the battery icon shrinks as the battery runs down.) 
3. Or, turn the Tablet PC over to view the battery gauge on the bottom of the Tablet PC.
4. Press the button next to the battery gauge. If all five LEDs are green, the battery is fully charged.

CHANGING THE BATTERY

You can change the battery while the system is powered on, with or without the Tablet PC connected to AC power.

1. If the Tablet PC is running, save all active files.
2. Open the Motion Dashboard and tap Properties under Power Management.
3. Select the Hibernate tab and make sure the box beside Hibernate is checked. (The default is Enabled.)
4. Go to Start>Turn Off Computer.
5. When the Turn Off Computer window appears, press the Shift key on your external keyboard or tap Shift on the Tablet PC Input Panel keyboard to change the option from Stand By to Hibernate.
6. Tap Hibernate. The Tablet PC displays that it is Hibernating.
7. Wait until the system shuts down and all LEDs are off.

8. With the replacement battery close at hand, push the battery release latch on the bottom of the Tablet PC to eject the internal battery.
9. Insert the new battery until you hear the latch click, which ensures the new battery is correctly seated.



CAUTION: To avoid damage to the Motion M1200, install only Motion Computing batteries, which are specially designed for the Tablet PC.

Disposing of Used Batteries

When an Motion M1200 battery is no longer serviceable, dispose of it responsibly at a hazardous materials recycling center. Do not send it to a landfill by tossing it in the trash.

Battery and Power Management Hints

- Use AC power whenever available to lengthen the battery's usable life. Leave the battery in place when using AC power.
- Use AC power when installing software or writing to a CD and, for best performance, when using a DVD player.
- Whether using AC or battery power, when leaving the Tablet PC unattended, place the system in Stand By or Hibernate mode.
- Keep in mind that the display, processor, PC cards, wireless cards, and accessory drives all draw on the battery, so adjust properties and disable unused accessories and PC cards when operating on battery power.
- When running on battery, adjust the power mode and display brightness to lower settings to prolong the battery's charge.

ADDING MEMORY

Use only Motion M-Series Memory modules obtained from Motion Computing to upgrade the factory-installed memory.



WARNING: To avoid the risk of personal injury or damage to the Tablet PC, when performing the following tasks, turn off your Tablet PC, unplug the AC power connection, and remove the battery. Ground yourself by touching the Tablet PC. Avoid touching the pins and leads on the memory and the internal circuitry of the Tablet PC.

1. After you disconnect power, unscrew the L-shaped cover from the bottom of the Tablet PC.
2. If you are replacing a module, release the clips on each side of the module and lift to remove it.
3. Align the pins on the Memory Upgrade module with the receptors on the slot.
4. Gently push the new module into the slot at a 25-degree angle until it is firmly seated; then rotate it into place.
5. Replace the external cover and install the two screws.



6. To check that the Memory Upgrade has installed successfully, select Start, My Computer, View System Information. The General tab shows the amount of RAM (memory) installed in your system.

NOTE: If the amount of RAM shown and the actual RAM differ, the Memory Upgrade module may not be seated properly. Repeat Steps 1-5, taking care to re-seat the module correctly.

SELECTING CABLES FOR OPERATING OPTICAL DISK DRIVES

Depending on the model you have purchased, two types of cables may be packaged with your Optical Disk Drive. Each type is clearly marked on the connector. You should consider which cable connection best suits your requirements:

- **IEEE 1394** — Fastest performance; recommended for everyday use; it is excellent for DVD video and multimedia games
- **USB** — Required connection for installation/reinstallation of your operating system or any operation that requires your system to boot (start up) directly from the Optical Disk Drive

INSTALLING OPTICAL DISK DRIVES

The Optical Disk Drive you've purchased does not require any special software drivers to operate as a standard CDROM device.

Depending on the Optical Disk Drive model you have purchased, additional software may be provided for DVD and CDRW drives:

- DVD software is required to view video DVDs. It is included with all DVD-enabled Optical Disk Drives.
- CD writing software provides advanced CD-writing capabilities beyond those offered in Windows XP. It is included with all CDRW-enabled Optical Disk Drives.

For information about installing your Optical Disk Drive, see the documentation packaged with the Drive.



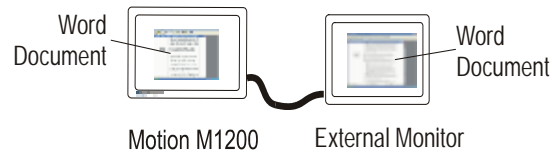
CAUTION: Use only the AC power supply provided with the Optical Disk Drive to power your drive. Connecting a power adapter other than the one provided could permanently damage the drive.

SETTING UP A DUAL DISPLAY CLONE OR EXTENDED DESKTOP

The Tablet PC has a Dual Head Video Controller that lets you clone or extend your Tablet PC display to a second monitor or to an external display.

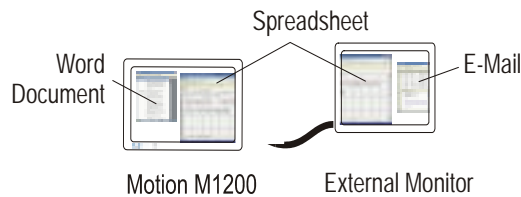
Examples of how you might set up a monitor + notebook (clone) and extended desktop mode are shown below:

Monitor + Notebook (Clone)



NOTE: The resolution of the external monitor will be the same as the Tablet PC display.

Extended Desktop



NOTE: When you attach the cables between the Tablet PC and the external monitor, the external monitor will be off until you change the graphics settings. You cannot change these settings before you attach the cables.

To set up the VGA monitor and Tablet PC:

1. Plug the VGA monitor cable into the VGA port on the Motion M1200 or Motion M-Series FlexDock.
2. Plug the external monitor or data projector into a power outlet and turn it on. Windows XP will recognize the new hardware and search for its driver. (You may need to install the driver from the CD supplied by the monitor's manufacturer.)

Changing to Dual Display Clone

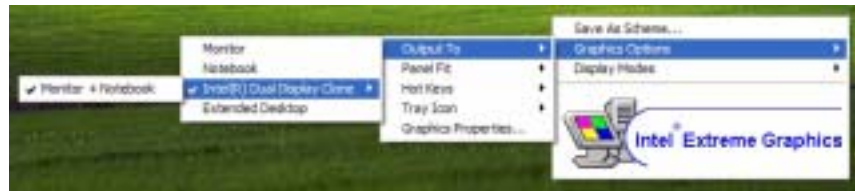
To change the graphics settings for a dual display clone:

1. Tap the icon for the Intel Extreme Graphics Application in the System Tray, located in the lower-right corner of the Tablet PC display.



NOTE: You can also access Graphics through the Motion Dashboard as well as through the Windows Control panel.

2. Tap Graphics Options.
3. Tap Output to.
4. Tap Intel(R) Dual Display Clone.
5. Tap Monitor + Notebook (clones the image to the external monitor from the Tablet PC).



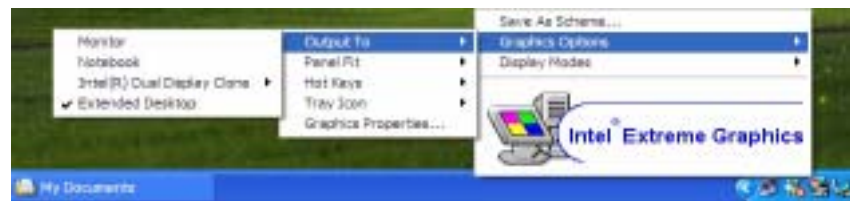
6. Tap **Apply**.

Example: You can have the Tablet PC display to the larger screen of your monitor or to an overhead projector and retain the handwriting and drawing capabilities of the Tablet PC. For example, you can open a Word document and the Tablet PC Input Panel and apply handwritten notes during a presentation.

Changing to an Extended Desktop

To change the graphics on the Motion M1200 display for extended desktop:

1. Tap the icon for the Intel Extreme Graphics Application in the System Tray, located in the lower-right corner of the Tablet PC display.
2. Tap Graphics Options.
3. Tap Output to.
4. Extended Desktop.



5. Tap **Apply**.

Example: You can set the extended Desktop with either the Tablet PC display (called the Notebook) or the external display (Monitor) as the Primary or Secondary Device. The default Primary Device is the Tablet PC. You can change this through the Graphics Properties... selection on Graphics Options (in Step 2, above). Or, go to the Windows Control Panel, tap the Display icon, and from the Display Properties window, select the Settings tab to view the physical arrangement of your monitor.

SETTING UP A WIRELESS CONNECTION

Wireless networks are available in non-secure areas, such as airports or businesses; others are in secure, private areas, such as corporations. You can also set up your own wireless access point at home for private use (which you can configure with or without security).

Although wireless access is available in public areas, your ability to connect to a wireless access point depends on the following conditions:

- The Tablet PC's distance from the wireless access point
- The Tablet PC's ability to access the wireless access point
- The Tablet PC's ability to access services on the wireless access point (which may require a user name, password, account, fee or other network setup through a network administrator)



WARNING: FAA regulations require that you disable any wireless connection when traveling by air. If the Wireless LED on the front of the Motion M1200 is off, wireless communications are disabled.

To set up a wireless connection through the Motion Dashboard:

1. Open the Motion Dashboard and make sure that Enable 802.11 Wireless Radio is checked.
2. Under Wireless Operation, tap Properties.
3. On the Wireless Network Connection Properties screen, tap the Wireless Networks tab.
4. From Available Networks, choose a network (an access point).
5. Tap Configure. The access point you selected should appear in the Network name (SSID) description.
6. Tap OK.
7. Tap OK again to complete the setup of the wireless connection.



NOTE: To complete the wireless connection, you may need to enable Wired Equivalent Privacy (WEP), Extensible Authentication Protocol (EAP), or other settings before the wireless network will connect. This may require you to add a network name (SSID) and Network key and/or to authenticate access (by password or other means). In a corporate wireless network, contact your System Administrator for these settings. For a home network, follow the instructions that come with your wireless access point. For other wireless access points that are available through third-party service provider (such as a wireless telephone service), contact the appropriate service provider.

To set up a wireless connection through the Control Panel:


1. Open the Control Panel and tap Network Connections.
2. Make sure the Wireless Network Connection is enabled. (If it's not, right-click on the connection and tap Enable.)

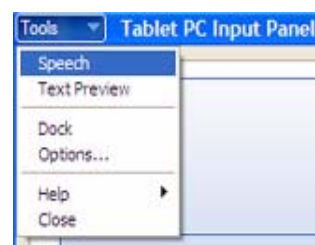
3. Right-click Wireless Network Connection.
4. Tap View Available Wireless Networks.
5. Tap Advanced.
6. Repeat Steps 3-7 above.

SETTING UP SPEECH RECOGNITION

To set up speech recognition:

NOTE: The Motion M1200 works best for dictation if you use a high-quality, headset microphone.

1. Plug a microphone into your Tablet PC.
2. Tap the Tablet PC Input Panel icon on the menu bar at the bottom of the Tablet PC display. The Tablet PC Input Panel appears. 
3. Tap the down-arrow beside Tools to open the selection box.
4. Tap Speech. The first time you access this function, a Speech Recognition Enrollment message appears suggesting that you take 10 minutes to Adjust the microphone and Train speech recognition before continuing. In addition, if you have not completed speech training, the speech buttons are inactive.
5. Tap Next and follow the Microphone Wizard.



NOTE: Speech recognition will only correctly recognize 85%-90% of your words as you dictate. As you use this tool, accuracy gradually improves. You can improve this performance by running further speech training sessions. Open the Windows Control Panel and select Speech to access speech training.


USING SPEECH RECOGNITION

After you complete Speech Recognition training, when you select Speech, the Tablet PC Input Panel displays options for Dictation or Commands. The display also indicates if it is Not Listening or Listening.

NOTE: For more information about using this feature, see the Windows Help and Support Center where you can search for topics about speech recognition and training. Also available are the speech tutorials. To find the speech tutorial, select Start, Help and Support, Welcome to Tablet PC, Tablet PC Tutorials.

CHANGING SCREEN RESOLUTION

The default screen resolution on the Tablet PC is True Color, 1024x768. To change screen resolution:

1. Tap the Graphics Properties button on the Motion Dashboard. Or, the Intel(R) Extreme Graphics icon in the System Tray, located at the bottom-right corner of the display. Then select Graphics Options, Graphics Properties... 

2. Under the Devices tab, tap the down-arrows to change the Colors or Screen area.
3. Tap OK or Apply. The screen will blank out for a few seconds. Then a message appears stating that your desktop has been reconfigured and asking you to confirm the settings.
4. To confirm the settings, tap OK. Otherwise, the display will automatically return to the previous settings in 15 seconds.

SETTING UP A NEW SCREEN RESOLUTION SCHEME

To set up a new screen resolution scheme:

1. Repeat Step 1 above.
2. From the Intel(R) 82830M Graphics Controller Properties window, select the Schemes tab. The current Video Mode is displayed.
3. Tap the New button on this window.
4. Type in a name for the new scheme.
5. Highlight this new scheme in the Schemes window.
6. Add or change the parameters for this scheme.
7. Tap Save.
8. To test or launch a scheme, select it from the list and tap the Invoke button.
9. Tap OK.

MULTIMEDIA APPLICATIONS

The Motion M1200 supports most multimedia applications.

SETTING UP TABLET PC SECURITY

Passwords protect your Tablet PC from unauthorized access. Passwords can create different levels of protection for your Tablet PC and the data it contains:

- **Operating system password** — Secures the files on your Tablet PC from other users
- **BIOS passwords** — Secures the software routines that test hardware at startup, start the operating system, and support the transfer of data among hardware devices; BIOS is the Basic Input/Output System
 - **System password** — Locks access to the BIOS; locks Tablet PC hardware so that even replacing the Hard Disk Drive will not let the system be accessed
 - **HDD (Hard Disk Drive) password** — Secures your data so the Hard Disk Drive cannot be accessed by removing it and connecting it to another Tablet PC

Setting the Windows Operating System Password

You can set up a Windows operating system password through the Control Panel, User Accounts.

Setting the BIOS Passwords




CAUTION: We strongly recommend that you write down your password(s) and keep it in a safe location. If you enter a wrong BIOS System password several times, you will be locked out of the system until you enter the correct password. If you become locked out, you can restart the Tablet PC and retry the password again. You can repeat this procedure as many times as needed. However, if you are not able to remember your password, you will be unable to access your Tablet PC. If this happens, you must call Motion Computing Technical Support or your Motion reseller for assistance.

The level of security you want on your Tablet PC helps determine what BIOS password(s) you set.

BIOS System Passwords

To set up a password to access the PhoenixBIOS Setup Utility on the Tablet PC:

NOTE: These procedures describe using the Pen to enter information; you can also attach an external keyboard if you prefer.

1. Start the Tablet PC.
2. When the Motion Computing Splash Screen appears, quickly press Hot Key #2. If you miss the Splash screen, turn the Tablet PC off then back on and try this step again. 
3. From the PhoenixBIOS Setup Utility, tap Security on the menu bar.
4. **To set up a System password**, double-tap Enter next to Set System Password.
5. Type in a System Password using the onscreen keyboard.
6. Tap Enter.
7. Type in the password again to confirm it.
8. Tap Enter. The system returns to the Security screen and the System Password reads Set. A password is now required to enter the PhoenixBIOS Setup Utility.
9. **To set up a Password on boot**, tap Disabled next to Password on boot until Enabled is highlighted. You will not be prompted to type in another password because Password on boot uses the System password.

NOTE: You cannot set up Password on boot until you set up a System password.

10. If you have finished setting up security, tap Exit or press the Esc key on the Tablet PC to exit the PhoenixBIOS Setup Utility.
11. When you exit, you're prompted to select from the following options:
 - Exit Saving Changes
 - Exit Discarding Changes
 - Load Setup Defaults

- Discard Changes
 - Save Changes
12. Select the desired action.
 13. Confirm the selection by double-tapping Yes.

Hard Disk Drive (HDD) Password

To set up a password to start the Tablet PC (no one can access the information on the Hard Disk Drive of the Tablet PC even if it's removed and installed in another Tablet PC):

1. Repeat Steps 1-3 above.
2. **To set the hard disk password**, double-tap Enter next to Set Hard Disk Password.
3. Type in a New Password.
4. Tap Enter.
5. Type in the password to confirm it.
6. Tap Enter. The system returns to the Security screen and the HDD Password is Set. (When you exit then re-enter the PhoenixBIOS setup, the HDD Password is Locked.)
7. Repeat Steps 10-13 above.

CLEARING TABLET PC SECURITY

To clear the Tablet PC PhoenixBIOS security:

1. Repeat Steps 1-3 in the first procedure. If you have rebooted, you will be prompted to enter the password(s) you've set up.
2. To clear the System and Password on boot passwords, double-tap Enter next to Set System Password.
3. Type in the Current Password.
4. Leave the space blank next to Enter New Password.
5. Tap Enter.
6. Leave the space blank to Confirm New Password.
7. Tap Enter.
8. When the Security screen appears, the System Password should be Clear and the Password on boot Disabled.
9. To clear the Hard Disk Drive password, double-tap Enter next to Set Hard Disk Password.
10. Repeat Steps 3-7 in this procedure. When the Security screen appears, the HDD Password should be Clear

CARING FOR THE MOTION M1200 AND ITS ACCESSORIES

The Motion M1200 display and chassis are designed to be very durable. This section describes the proper care and maintenance that will keep them working and in good condition for a long time.



CAUTION: Be sure to follow the guidelines listed below when caring for your Motion M1200 and its components. Improper use may damage the Motion M1200 and/or its components.

General Care

- Protect the Motion M1200 from exposure to extreme temperatures, shock, liquids, strong magnetic fields, and turbulent conditions.
- Optimal ambient operating temperature range: 41°F to 95°F (5°C to 35°C)
- Keep the side vent exposed when using the Motion M1200 in extreme heat (+95°F or +35°C).
- Do not open or disassemble the Motion M1200 other than to replace memory modules or to replace the battery.



WARNING: To avoid the risk of personal injury or damage to the Tablet PC, when replacing memory modules, turn off your Tablet PC, unplug the AC power connection, and remove the battery. Ground yourself by touching the Tablet PC. Avoid touching the pins and leads on the memory and the internal circuitry of the Tablet PC. See the section “Adding Memory” in this chapter for more information about replacing or adding memory modules.

- When storing the Motion M1200 for an extended period of time, unplug AC power and remove the battery after discharging it partway.
- Do not place heavy objects on top of the Motion M1200.

Caring for the Display Screen

- You can clean fingerprints and most marks from the display surface by wiping it with the soft cloth (provided). If needed, you can spray this cloth with a window-type cleaner. Never spray or pour liquids directly onto the display surface. Never use an abrasive cleaner on the display. If liquid is spilled on the display surface, wipe it up immediately.
- Avoid using tissues or paper towels to clean the display surface. These contain wood fibers that can scratch the display.
- Use only the Motion M-Series Digitizer Pen on the display. Do not write on the surface with an ink pen or pencil, any pointed or other object that could damage the display surface.
- Do not place heavy objects on the display surface.
- Protect the display surface from unnecessary contact by using the Hard Top cover or a portfolio when transporting the Motion M1200.
- Avoid exposing the display to direct sunlight for long periods of time.

Caring for the Motion M-Series Digitizer Pen

- Always store the Motion M-Series Digitizer Pen in the Motion M1200 pen holder or in the portfolio when not in use.
- Store extra Pens in your portfolio. The Pen should not be stored vertically on the tip as constant tip pressure can affect the pen-to-digitizer interaction.
- The Pen contains sensitive electronics. Do not immerse it in liquids.

Replacing the Pen Tips

Normal use wears down the Pen tip, so the Pen ships with extra tips and a tool for replacing them.

To remove the pen tip:

1. Grasp the old tip with the silver ring of the replacement tool.
2. Pull the old tip out of the Pen.
3. Insert a new tip.
4. Apply slight pressure to set it in place.

Ordering New Pens

To order additional Pens, visit the Motion Computing website at www.motioncomputing.com/accessories.

TRAVELING WITH THE MOTION M1200 TABLET PC

Recommendations for traveling with the Motion M1200 are listed below.



WARNING: FAA regulations require that you disable any wireless connection when traveling by air. The LED on the front of the Motion M1200 provides a convenient way to check the status of your wireless connection. If the LED is off, wireless communications are disabled.

Packing the Motion M1200

- Remove all accessories and cables. Remember to pack those you'll need while traveling and don't forget to pack at least one Motion M-Series Digitizer Pen.
- Attach the Hard Top or slip the Motion M1200 into its portfolio to protect the display.
- Protect the Pen by keeping it in the Motion M1200 pen holder or portfolio case during travel.
- Pack the Tablet PC securely in a briefcase or hand-carried luggage, and keep it separate from toiletries, liquids, and food. Do not pack it in checked luggage when you travel.
- Keep the Tablet PC stable during travel; secure it to prevent it from sliding around in overhead bins and car trunks.

Traveling by Air

- Prepare for airport security by charging the battery in case Security asks you to start the Tablet PC.
- Have it hand-inspected or sent through the X-ray scanner, but never carry it through the metal detector.
- Either turn off or place the Tablet PC in hibernation for takeoff and landing.
- The FAA requires that wireless operations be suspended before boarding the plane. The easiest way to disable wireless operations is by unchecking the Wireless box in the Motion Dashboard. The wireless LED on the Motion M1200 front panel is off when wireless

communications are disabled.

- We recommend that you carry the Tablet PC on board the aircraft and not check it as baggage.

Other Travel Hints

- Before extended use in the field or long trips away from AC power, adjust the Power properties to maximize battery conservation. Right-click the Power/Battery icon in the System Tray, located in the lower right-hand corner of the display window, to open the Power Options Properties dialog box. Then adjust the options. For more information, see the section “Changing the Default Power Scheme” in this chapter. Or see the Performance and Maintenance section of the Help and Support Center for details about power settings.
- For international travel, obtain and use the appropriate adapters for your destination’s electrical outlets. A current converter is not necessary.
- You may want to carry proof of ownership or a merchandise passport when traveling internationally.
- Consult your insurance company and credit card company to learn about emergency travel assistance if your Motion M1200 is lost or disabled.

Appendix A

Regulatory Compliance Notices

REGULATORY COMPLIANCE NOTICES

Electromagnetic Interference (EMI) is any electromagnetic disturbance that interrupts, obstructs, or otherwise degrades or limits the effective performance of electronics or electrical equipment. These emissions can potentially disrupt, degrade, or otherwise interfere with authorized electronic emissions, which may include television, AM/FM broadcasts, cellular services, radar, air-traffic control, and pagers.


The FCC Rules and Regulations have established Radio Frequency (RF) emission limits to provide an interference-free RF spectrum. Many electronic devices, including computers, generate RF energy incidental to their intended function and are, therefore, covered by these rules.

Your Motion M1200 Tablet PC and Motion M-Series FlexDock have been designed and found to meet the regulatory agency limits for Electromagnetic Compatibility (EMC). EMC is the ability of electronic devices, including computers, to function properly together in the electronic environment. However, there is no guarantee that in a specific installation it will not cause interference. Should this equipment cause harmful interference to radio or television reception, which can be determined by turning the equipment off and on, you are encouraged to try to correct the interference by one or more of the following measures:

- Reorient the receiving antenna.
- Relocate the Tablet PC and the receiver.
- Separate the Tablet PC and the receiver.
- Plug the Tablet PC and receiver into different circuits.

You may also need to contact a radio/television technician for assistance.

**FEDERAL
COMMUNICATIONS
COMMISSION
NOTICE****Unintentional Emitter per FCC Part 15**

The rating label on the Motion M1200 Tablet PC and M-Series FlexDock shows which class (A or B) the Tablet PC falls into. Class B devices have an FCC logo () or FCC ID on the label. Class A devices do not have an FCC ID on the label. Once you determine the class of the device, refer to the following corresponding statement and to the FCC notices in this appendix.

- Class A is for business or industrial environments.
- Class B is for residential environments.

This device complies with Part 15 of the Federal Communications Commission (FCC) Rules. Operation is subject to the following two conditions:

- This device may not cause harmful interference.
- This device must accept any interference received, including interference that may cause undesired operation.

Class A Equipment: This equipment has been tested and found to comply with the limits for a Class A digital device, pursuant to part 15 of the FCC Rules. These limits are designed to provide reasonable protection against harmful interference when the equipment is operated in a residential environment. This equipment generates, uses, and can radiate radio frequency energy and, if not installed and used in accordance with the manufacturer's instruction manual, may cause interference with radio communications. Operation of this equipment in a residential area is likely to cause harmful interference, in which case you will be required to correct the interference at your own expense.

Class B Equipment: This equipment has been tested and found to comply with the limits for a Class B digital device, pursuant to part 15 of the FCC Rules. These limits are designed to provide reasonable protection against harmful interference when the equipment is operated in a residential environment. This equipment generates, uses, and can radiate radio frequency energy and, if not installed and used in accordance with the manufacturer's instruction manual, may cause interference with radio communications. However, there is no guarantee that interference will not occur in a particular installation. If this equipment does cause harmful interference to radio or television reception, which can be determined by turning the equipment off and on, you are encouraged to try to correct the interference by one or more of the following measures:

- Reorient or relocate the receiving antenna
- Increase the separation between the equipment and the receiver
- Connect the equipment into an outlet on a circuit different from that to which the receiver is connected

- Consult the dealer or an experienced radio/television technician for help

The following information is provided on the device or devices covered in this document in compliance with FCC regulations:

- Model number: T001
- Company name: Motion Computing, Inc.
- 9433 Bee Caves Road, Building 1, Suite 250
- Austin, Texas 78733
- 512-637-1120

Intentional Emitter per FCC Part 15

Embedded in your Motion M1200 Tablet PC is a low frequency, Radio Frequency (RF) wireless communication device. This Radio LAN type device operates in the 2.4 GHz Band and has met all the qualifications for use under FCC regulations and guidelines.

The FCC guidelines for the use of this equipment specifies that a distance of 8 inches (20 cm) should be maintained between the wireless communication device and the body (but not the extremities) when the device is turned on. The power output of the wireless communication device in your Tablet PC is well below the RF exposure limits set by the FCC.

Operation of this wireless communication device is subject to the following two conditions:

- This device may not cause harmful interference
- This device must accept any interference received, including interference that may cause undesired operation.

WARNING: Do not attempt to service the wireless communication device built into your Tablet PC yourself. Such action may void the warranty on your Tablet PC. Contact your Motion Reseller or Motion Computing for information about servicing your wireless communication device.

Modifications

The FCC requires that you be notified that any changes or modifications made to this device that are not expressly approved by Motion Computing, Inc. may void the your authority to operate the equipment.

Cables

Connections to this Tablet PC must be made only with shielded cables. This reduces possible interference with radio communications and complies with FCC Rules and Regulations for this EMC classification.

Internal Modem

The Motion M1200 Tablet PC has an internal modem that has been tested to comply with FCC Standards and that complies with FCC Part 68 Reg. No: 5ZXMUL-36273-FB-E; AC REN:0.1B; USOC:RJ11; DOC REN:.0.0. The FCC compliance label is located on the internal modem installed in the Tablet PC.

IC NOTICE (CANADA ONLY)

Unintentional Emitter per ICES-003

Motion Computing Tablet PCs are classified by the Industry Canada (IC) Interference-Causing Equipment Standard #3 (ICES-003) as Class B digital devices. This classification is located on the label on the bottom of your Tablet PC. Look for a statement on the label similar to the following: Canada ICES-003, Class/Classe B.

This Class B (or Class A, if so indicated on the registration label) digital apparatus meets the requirements of the Canadian Interference -Causing Equipment Regulations.

Cet appareil numérique de la Classe B (ou Classe A, si ainsi indiqué sur l'étiquette d'enregistrement) respecte toutes les exigences du Règlement sur le Matériel Brouilleur du Canada.

Intentional Emitter per RSS 210

This device complies with RSS 210 of Industry Canada. Operation is subject to the following two conditions: (1) this device may not cause interference, and (2) this device must accept any interference, including interference that may cause undesired operation of this device.

L'utilisation de ce dispositif est autorisée seulement aux conditions suivantes: (1) il ne doit pas produire de brouillage et (2) l'utilisateur du dispositif doit être prêt à accepter tout brouillage radioélectrique reçu, même si ce brouillage est susceptible de compromettre le fonctionnement du dispositif.

The term "IC" before the equipment certification number only signifies that the Industry Canada technical specifications were met. Approval Number:

CE NOTICE (EUROPEAN UNION)




Unintentional Emitter

The **CE** (Conformité Européenne) symbol found on the Tablet PC indicates compliance to the EMC Directive and the Low Voltage Directive of the European Union. This means that the Tablet PC meets the following technical standards:

- EN 55022 — Limits and Methods of Measurement of Radio Interference Characteristics of Information Technology Equipment

- EN 55024 — Information Technology Equipment-Immunity characteristics - Limits and methods of measurement
- EN 61000 3-2 - Electromagnetic compatibility (EMC)-Part 3: Limits - Section 2: Limitations for harmonic current emissions (Equipment input current up to and including 16 A per phase)
- EN 61000 3-3 - Electromagnetic compatibility (EMC) - Part 3: Limits - Section 3: Limitations of voltage fluctuations and flicker in low-voltage supply systems for equipment with rated current up to and including 16 A
- EN60950 — Safety of Information Technology Equipment

Intentional Emitter

   This device complies with the essential requirements of the R&TTE Directive 1999/5/EC with essential test suites as per standards:

- EN60950 — Safety of Information Technology Equipment
- ETS 300 328 Technical requirements for radio equipment
- ETS 300 826 General EMC requirements for radio equipment

Belegië/Belgique:

For outdoor usage only, channel 10 (2457 MHz) and 11 (2462 MHz) is allowed. For private usage outside buildings across public grounds over less than 300 meters, no special registration with IBPT/BIPT (Belgium Institute for Postal services and Telecommunications) is required. Registration to IBPT/BIPT is required for private usage outside buildings across public grounds over more than 300 meters. An IBPT/BIPT license is required for public usage outside buildings. For registration and license, please contact IBPT/BIPT.

Gebruik buiten gebouw alleen op kanalen 10 (2457 MHz) en 11 (2462 MHz). Voor privé-gebruik buiten gebouw over publieke grond over afstand kleiner dan 300m geen registratie bij BIPT/IBPT nodig; voor gebruik over afstand groter dan 300m is wel registratie bij BIPT/IBPT nodig. Voor publiek gebruik buiten gebouwen is licentie van BIPT/IBPT verplicht. Voor registratie of licentie kunt u contact opnemen met BIPT.

L'utilisation en extérieur est autorisé sur le canal 10 (2457 MHz) et 11 (2462 MHz). Dans le cas d'une utilisation privée, à l'extérieur d'un bâtiment, au-dessus d'un espace public, aucun enregistrement n'est nécessaire pour une distance de moins de 300m. Pour une distance supérieure à 300m un enregistrement auprès de l'IBPT est requise. Pour une utilisation publique à l'extérieur de bâtiments, une licence de l'IBPT est requise. Pour les enregistrements et licences, veuillez contacter l'IBPT.

Deutschland:

A license is required for outdoor installations. Check with reseller for procedure to follow.

Anmeldung im Outdoor-Bereich notwendig, aber nicht genehmigungspflichtig. Bitte mit Händler die Vorgehensweise abstimmen.

France:

Restricted frequency band: only channels 10 and 11 (2457 MHz and 2462 MHz respectively) may be used in France.

A license is required for every installation, indoor and outdoor. Please contact ART (L'Autorité de Régulation des Télécommunications) for procedure to follow.

Bande de fréquence restreinte: seuls les canaux 10 à 11 (2457 et 2462 MHz respectivement) doivent être utilisés en France.

Toute utilisation, qu'elle soit intérieure ou extérieure, est soumise à autorisation. Vous pouvez contacter L'Autorité de Régulation des Télécommunications (<http://www.art-telecom.fr>) pour la procédure à suivre.

Italia:

A license is required for indoor use. Use with outdoor installations is not allowed.

E' necessaria la concessione ministeriale anche per l'uso interno. Verificare con i rivenditori la procedura da seguire. L'uso per installazione in esterni non e' permessa.

Nederland:

A license is required for outdoor installations. Check with reseller for procedure to follow.

Licentie verplicht voor gebruik met buitenantennes. Neem contact op met verkoper voor juiste procedure.

Appendix B

Troubleshooting and Support

The Motion M1200 Tablet PC has passed a rigorous series of performance and quality-control tests, but now and then a problem may appear. If you don't see a solution among the following system and software issues, check the Support Options listed at the end of this chapter or go to www.motioncomputing.com/support.

SOLUTIONS

PROBLEM	CAUSE	SOLUTION
POWER		
The Tablet PC won't start when I slide the Power switch.	The Power switch hasn't been fully engaged.	Slide and hold the Power switch for at least a half-second, but no more than three seconds.
	Fully discharged battery or no battery and no AC power.	Connect the AC adapter to operate the Tablet PC and charge the battery.
The Tablet PC won't shut down.	An application has locked up the Tablet PC.	Slide and hold the Power switch for at least 5 seconds to force a shutdown of the Tablet PC.
The Tablet PC won't enter Hibernation mode.	Hibernation isn't enabled.	Enable Hibernation through Power Option Properties.
The Tablet PC won't come out of Stand By or Hibernation mode when running on battery power.	Fully discharged battery and no AC power.	Connect the AC adapter to provide power to the Tablet PC and charge the battery.

PROBLEM	CAUSE	SOLUTION
POWER (CONTINUED)		
The display goes black while the Tablet PC is still turned on.	The Tablet PC system has gone into Stand By after sitting idle for a period of time. (In this state, the power LED flashes green.)	Slide the Power switch for about a second to resume operations.
	System has gone into low-battery Hibernation. (In this state, the power LED is off.)	Slide the Power switch for about a second to resume operations. Connect the AC adapter to the Tablet PC to charge the battery.
BATTERY		
Data loss during battery swap.	<ul style="list-style-type: none"> You set the Tablet PC to Stand By instead of Hibernate to change the battery. You put the Tablet PC in Stand By and didn't save your data before changing the battery. 	<ul style="list-style-type: none"> Be sure to set the Tablet PC to Hibernate instead of Stand By to change the battery. If you do want to use Stand By (not recommended), save your data before changing the battery.
The battery seems to run down very quickly (lasting less than three hours after a full charge).	Accessory devices such as a DVD player and applications that make heavy use of the hard drive drain the battery more quickly.	<ul style="list-style-type: none"> Use AC power when possible. Readjust the Power properties on the Tablet PC to Max Battery or Motion Optimized when AC power is unavailable.
	The battery is weakening or defective.	All batteries weaken in time, but if a new battery is needed, contact your reseller or Motion Computing Support about replacing it.
DISPLAY		
The desktop is too big for the display – I can't see all of the desktop icons.	Screen resolution is set higher than the default 1024 x 768 with 32-bit resolution.	Decrease the screen resolution by opening the Motion Dashboard, selecting Graphics Properties, then the Schemes tab.
When I disconnected a second monitor from the Tablet PC, the image became too big for the Tablet PC display.	The Tablet PC has attempted to spread the image of a window or desktop beyond the screen area of the active monitor.	<ol style="list-style-type: none"> Tap the Extreme Graphics icon in the system tray. Tap Graphics Options, then Graphics Properties... to open the Properties screen. Select Notebook to make it the primary display.
The display looks dim.	Brightness is set too low.	Adjust brightness from the Tablet PC Dashboard.

PROBLEM	CAUSE	SOLUTION
DISPLAY (CONTINUED)		
The screen is unreadable or distorted.	Screen resolution and/or color quality are set incorrectly.	Reset resolution to 1024 x 768 and color quality to 32-bit by opening the Motion Dashboard, Graphics Properties, then the Schemes tab.
	Display driver has become corrupted or uninstalled.	<ol style="list-style-type: none"> 1. Open the Windows Control Panel, select Performance and Maintenance (Category View). or System (Classic View). 2. Select the Hardware tab. 3. Select Device Manager. 4. Open Display adapters. 5. Double-tap on an adapter. 6. Select the Driver tab. 7. Choose Update Driver... and follow the Installation Wizard.
PEN		
The Tablet PC digitizer screen doesn't respond to the plastic stylus I use on my PDA.	You're using the wrong input device.	Use only the Motion M-Series Digitizer Pen. The Tablet PC doesn't respond to other tablet pens or to plastic styluses.
I have the Tablet PC Input Panel open, but a few seconds after I write, my writing disappears.	You don't have any application or word processing program open for the Input Panel to send text to.	Open the Text Preview window from the Tools menu on the Input Panel. If you want to save your work, you also need to open a word processing program, such as Microsoft Word, Notepad, or Wordpad.
The Motion M-Series Digitizer Pen tip doesn't line up with the arrow-cursor when I tap on the screen.	The pen and display need recalibrating.	Double-tap the Tablet and Pen Settings icon and select the Pen Settings tab. Or select Calibrate on the Motion Dashboard.
I sometimes unintentionally click the Pen function button while I'm writing with the Pen and the Pen doesn't work the way I expect it to.	The default setting for the Pen function button is a right-click option, similar to a mouse. You're pressing the Pen button with your thumb or finger when you write or gripping the Pen too tightly and accidentally pressing the Pen button.	<ul style="list-style-type: none"> • Readjust how you hold the Pen. Place your fingers on either side of the Pen function button when you write. • Practice using the Pen function button with both your index finger and thumb to see which you prefer. • Relax your grip. Only a light touch is needed to write with the Pen. • Deactivate the right-click function through Tablet and Pen Settings. Instead, press and hold the Pen to the display surface to right-click. •

PROBLEM	CAUSE	SOLUTION
PEN (CONTINUED)		
The Pen button doesn't work. I can't get it to right-click.	<ul style="list-style-type: none"> The right-click option for the Pen button may be deactivated. You may not be correctly timing when you click the Pen button and tap the Pen on the display. 	<ul style="list-style-type: none"> Re-activate the right-click option: Double-click the Tablet and Pen icon, select Pen Options, and reselect Use pen button to right-click. Select Apply, then OK. To right-click, click the Pen button as you tap the display.
INTERFACE/PORTS		
The buttons on the Tablet PC don't do what I expected.	Button functions have been changed.	Double-tap the Tablet and Pen Settings icon then Tablet Buttons . You can reset the buttons to the default.
The system doesn't recognize the PC card I've inserted.	<ul style="list-style-type: none"> The card is incorrectly inserted. The device is not supported. 	<ul style="list-style-type: none"> Eject the card and re-insert it with the label side up. Check Windows XP compatibility.
The system doesn't recognize a USB or IEEE 1394 device.	Windows XP may take a short time to recognize the device.	Wait until Windows XP recognizes the device.
	The accessory isn't connected to the Tablet PC correctly.	Check the connection cable and be sure it is inserted into the correct port on the Tablet PC and the accessory device.
	The correct driver isn't built into Windows XP.	Use the device's installation CD or check the manufacturer's website for the correct driver.
The Tablet PC is sitting in the Motion M-Series FlexDock, but the system doesn't recognize any accessory devices, such as the external monitor or CDROM.	The Tablet PC isn't fully seated in the Motion M-Series FlexDock.	Reseat the Tablet PC in the Motion M-Series FlexDock.
AUDIO		
The built-in microphone doesn't seem to hear my voice correctly.	The built-in microphone is not intended for dictation.	For speech recognition, attach a headset microphone. A DSP headset provides good results.
No sound is coming from the built-in speakers.	Connecting a headset or external speakers mutes the built-in speakers.	Disconnect the headset or external speakers if not in use.
No sound is coming from any speakers.	Audio volume is too low.	Adjust volume by selecting the Speaker icon in the System Tray, located in the lower-right corner of the display window.

PROBLEM	CAUSE	SOLUTION
OPERATING SYSTEM		
I've forgotten my BIOS password and can't access my system.	The Tablet PC will let you enter a certain number of incorrect passwords (five) before it locks the system.	Turn the Tablet PC off and back on and try entering your password (you can do this as many times as needed). If you have forgotten your password, contact your Motion Computing reseller or Motion Technical Support for information about unlocking your system.
The program I'm working in has stopped responding, but the cursor moves and other programs work.	The program has crashed.	Press the Security button (small button with a key icon) on the Tablet PC front panel to open the Task Manager and end the non-responsive program.
The system keeps showing the wrong date and time even after I reset it.	Wrong time zone is selected.	Check that the time zone is correct and reset it as needed.
	The system memory (CMOS) battery on the mainboard may need to be replaced.	Contact your reseller or Motion Computing Support at www.motioncomputing.com/support
The system seems to be operating more slowly than usual.	The hard drive is full or nearly full.	Run the Disk Cleanup utility to clear out unnecessary and temporary files. Remove unneeded programs and files. Consult the "Performance and Maintenance" section of the Help and Support Center.
	The disk needs defragmenting.	Run Disk Defragmenter to consolidate files and folders on the hard drive. Consult the "Performance and Maintenance" section of the Help and Support Center.
COMMUNICATIONS		
Wireless communications keeps connecting even when I don't want it to.	The default setting is On.	Uncheck the Wireless Communications checkbox in Dashboard.
Data doesn't transfer through the wired Ethernet cable.	The Ethernet cable is not connected correctly.	Reconnect and check the activity LEDs next to the LAN (RJ-45) port. They should flash green and amber.

FAQs**How long will the battery stay charged?**

This can vary according how you're using the Tablet PC, but a new, fully charged standard Motion M-Series 6-cell battery can last 3-4 hours.

Can I make the battery charge last longer?

- Adjust the Power properties to Max Battery or Motion Computing Optimized (right-click on the Power/Battery icon in the System Tray, located in the lower-right corner of the display window, select Adjust Power Properties; under Power schemes, select Max Battery).
- Dim the display brightness (double-tap on the Tablet and Pen Settings icon in the System Tray and choose the Display tab; adjust the Brightness slider)
- Disconnect LAN/modem connections and disable wireless communications when not in use (uncheck the Wireless Communications checkbox in the Motion Dashboard)
- Turn off optional and unnecessary background programs and turn off or unplug accessory equipment from the USB and IEEE 1394 ports

What does the Tablet PC need for use in another country?

Just an outlet adapter, which you can find in airports and travel stores. The AC adapter will adjust automatically to different voltage when plugged into the correct location-appropriate power adapter.

What's the best way to clean the display screen?

You can spray a window-type cleaner onto a soft cloth, like the one supplied with your Tablet PC, to clean the display screen. Do not spray cleaners, spray/pour any liquid, nor wipe any abrasive cleaner on the screen nor any surface of the Tablet PC. Do not use tissues or paper towels to clean the screen. They contain wood fibers and may scratch the surface.

Will scratches affect the display/digitizer's performance?

Testing has not found appreciable loss of performance on a scratched display.

How sensitive is the screen to sunlight and the elements?

As with any computer or electronic device, the Tablet PC should be protected from liquids, dirt and sand, other contaminants, and extreme heat.

Will the Tablet PC work with any monitor or USB accessory keyboard, mouse, disk drive, etc?

As long as the device's driver is available either in the Windows XP operating system or from the manufacturer and it carries the Windows XP logo or certification, it should work with your Tablet PC. For more information, see www.microsoft.com/help.

Why doesn't the Tablet PC or FlexDock have parallel, serial, or PS2 (mouse) ports?

Microsoft Tablet PC certification requires the system to be completely Grab-and-Go—that is, to be able to dock with and undock from all accessories without putting the system into suspend or shutting it down. Connection through legacy ports (serial, parallel, PS2) often requires suspending or restarting the system, which prevents you from moving between desktop mode and mobile mode seamlessly in one docking/undocking step. You can purchase a USB-to-serial or USB-to-parallel adapter from Motion Computing or a Motion Computing reseller.

How do I adjust the Tablet for left-handed use?

Double-tap on the Tablet and Pen Settings icon in the System Tray, located in the lower-right corner of the display window, which opens the Settings window. You can change handedness as well as the location of the menus.

**MOTION
WARRANTIES****Standard, and Extended Warranty and Insurance Programs**

Motion Computing offers a 1-year limited warranty on the Motion M1200 Tablet PC, the Motion FlexDock, and Memory Upgrade Modules. For a copy of this Warranty, see the Warranty packaged with your Motion M1200 or Appendix D of this *User Guide*.

Motion Computing offers 90-day warranties on other accessories. For a copy of this Warranty, see the Warranty packaged with your Motion M1200 or Appendix D of this *User Guide*.

In addition, Motion Computing offers 2-year and 3-year extended warranties along with various screen and configuration insurance programs. For information, contact Motion Computing at www.motioncomputing.com/support. For a copy of this Warranty, see the Warranty packaged with your Motion M1200 or the Warranty chapter in this *User Guide*.

**MOTION
COMPUTING
SUPPORT
OPTIONS****Motion Computing Support**

If you need assistance or answers to frequently asked questions about your Motion M1200, visit www.motioncomputing.com/support. We also offer a Knowledge Base of additional information that may help with your problem. If you do not find your answer here, please call Motion Computing at 1-866-322-9783.

Returning the Motion M1200 for Repairs

To request service for your Motion M1200, contact Motion Technical Support at www.motioncomputing.com/support or call toll-free 866-322-9783.

RMA Process (Warranty Service)

To request warranty service, contact Motion Technical Support at our toll-free number, 866-322-9783. If Motion determines a return is necessary, you will be given an RMA (Return Material Authorization) number, as well as packing and shipping instructions. Motion Computing will complete the repair within 48 business hours and return it by two-day air shipment.

Appendix C

Safety

This Motion M1200 Tablet PC is designed to optimize safety, minimize strain and withstand the rigors of portability. However, certain precautions should be observed to further reduce the risk of personal injury or damage to the computer. Be certain to read the general precautions below and to note the cautions included in the text of the *User Guide*.

BASIC SAFETY



WARNING: When using your Tablet PC and accessories, always follow basic safety precautions to reduce the risk of personal injury, fire, and electric shock. These include the following:

- Do not use this product near water; for example, near a bathtub, washing bowl, kitchen sink or laundry tub, in a wet basement, or near a swimming pool.
- Avoid using the wired modem or LAN during an electrical storm. There may be a remote risk of electric shock from lightning.
- The cable used with the modem should be manufactured with a minimum wire size of 26 American wire gauge (AWG) and an FCC-compliant RJ-11 modular plug.
- To help avoid the potential hazard of electric shock, do not connect or disconnect any cables or perform maintenance or reconfiguration of this product during an electrical storm.

USING YOUR TABLET PC

- When setting up the Tablet PC for work, place it on a level surface or in the Motion M-Series Desktop Stand or FlexDock.
- Before you clean your Tablet PC, it is best to turn it off, unplug it from its power source, and remove the battery.

- You can use a soft, dry cloth to clean the display. If you need to use a window-type cleaning product, DO NOT spray directly on the Tablet PC display. Instead, spray the cloth first and then wipe the display.
- Do not push objects into air vents or openings of your Tablet PC. Doing so can cause personal injury and damage to the device by shorting out internal components.



WARNING: To avoid the risk of personal injury, when working with accessories or replacing memory modules, always follow installation instructions closely. Do not attempt to service the Tablet PC yourself, except for those operations described in this *User Guide*, such as changing memory modules or the battery.

- When installing memory modules or other components, unplug the Tablet PC from its power source, and remove the battery. Handle the memory module with care. Ground yourself by touching the Tablet PC before handling them. Hold these components by their edge, not their pins.
- When you disconnect a cable, pull on its connector, not on the cable itself. As you pull out the connector, keep it evenly aligned to avoid bending any connector pins. Also, before you connect a cable, make sure both connectors are correctly oriented and aligned.
- To completely power-down the Tablet PC, turn it off, disconnect the AC adapter from the electrical outlet, and remove the battery.
- When traveling, do not place the Tablet PC in an overhead storage compartment where it could slide around.
- When you move your Tablet PC between environments with very different humidity and/or temperature ranges, condensation may form on or within the Tablet PC. To avoid damaging the Tablet PC, allow sufficient time for the moisture to evaporate before using it.
- When traveling, do not check the Tablet PC as baggage.
- You can put your Tablet PC through an X-ray security machine, but never put your Tablet PC through a metal detector.
- If you have the Tablet PC checked by hand, be sure to have a charged battery available in case you are asked to turn it on.

PERSONAL COMFORT

- Help prevent injuries before they occur by taking frequent breaks each hour to stretch and change position. Visit the Mayo Clinic website at www.mayoclinic.com for other suggestions.
- Rest your hands and wrists frequently so they have time to recover from repetitive movements.
- Use a wrist pad.
- The touch pad on the Motion M-Series Keyboard changes the way you use your hands and wrists, so work with it occasionally as a break from the keyboard or mouse.

**PRESSURE OR
IMPACT
DAMAGE**

- Do not apply heavy pressure to the Tablet PC or subject it to strong impact. Excessive pressure or impact can cause damage to Tablet PC components or otherwise cause malfunctions.
- Do not drop your Tablet PC or subject it to other mechanical shocks.

**USING THE
BATTERY**

- The Motion M-Series 3-cell and 6-cell batteries contain the following label: CAUTION: The battery used in this device may present a risk of fire or chemical burns if mistreated. Dispose of used battery properly. Do not dispose of in fire. Do not disassemble, incinerate, or short external contacts.
- To avoid injury, if the battery is overheated, wait until the battery cools to room temperature before recharging or replacing it.
- Do not carry a battery in your pocket, purse, or other container where metal objects (such as car keys) could short-circuit the battery terminals. The resulting excessive current flow can cause extremely high temperatures and may result in burns.
- Replace the Tablet PC battery only with a Motion battery or a Motion-approved equivalent.
- Dispose of used battery properly. Do not dispose of in fire. Do not disassemble, incinerate, or short external contacts. You can also check with local authorities for disposal instructions.
- Protect your Tablet PC, battery, and hard drive from environmental hazards such as dirt, dust, food, liquids, temperature extremes, and overexposure to sunlight.

AC ADAPTER

- Place the AC adapter in a ventilated area, such as a desk top or on the floor, when you use it to run the Tablet PC or to charge the battery. Do not cover the AC adapter with papers or other items that will reduce cooling; also, do not use the AC adapter while it is inside a carrying case.
- Be sure that nothing rests on your AC adapter's power cable and that the cable is not located where it can be tripped over or stepped on.
- Use only the AC adapter and power cord approved for use with this Tablet PC. Use of another type of AC adapter may cause personal injury or damage to the Tablet PC.
- If you use an extension cable with your AC adapter, ensure that the total ampere rating of the products plugged into the extension cable does not exceed the ampere rating of the extension cable.

Appendix D

Motion M1200 Specifications

Motion M1200 Tablet PC	
CPU	Intel Pentium processor
Chipset	Intel 830MG
System Memory	256MB base RAM (maximum 1GB); two PC133 SODiMM sockets
System Storage	Available configurations: minimum 20GB, upgradeable
I/O	Microphone-in; Headphone out; DC power in Ports: two USB 1.1 ports; one IEEE 1394; one RJ-11; one RJ-45; one VGA monitor; one Motion M-Series FlexDock docking connector
Front Panel Buttons (in Primary landscape mode; top to bottom)	One Alt+Tab key with secondary function One Function key Five-way directional control buttons with secondary functions Programmable Hot Key: One Dashboard display button with secondary function Programmable Hot Key: One Portrait/Landscape rotation key with secondary function One Security button (Ctrl+Alt+Del)
PC Card Controller	O2 Micro OZ6912T PCI Cardbus
PCMCIA	Single Type-II PCMCIA cardbus slot
Audio	Sigmatel AC 97 audio codec
Display	12.1" XGA TFT LCD
Graphics	Intel 830MG integrated graphics with UMA rotational support. Rotation: 0, 90, 180, 270 degrees
Communications	
Ethernet LAN	10/100: Realtek RTL8100B LAN on motherboard
Modem	V.92 56.6Kbps/14.4Kbps transceiver fax
Wireless	802.11b via Type-III mini-PCI interface
Input Device	Active digitizer pen (no battery required) with single function button
Docking	Motion M-Series FlexDock docking station. Features include: microphone-in; headphone out; DC power in; three USB 1.1 ports; IEEE1394 connector; RJ-45 connector; VGA connector (for external monitor); docking connector to the Tablet PC; cut-out that allows access to the RJ-11 (modem) connector on the Tablet PC

Battery/Power Management	
Battery Type	Six prismatic Lithium-ion cells; Smbus control; 40Whr capacity (optional lightweight 3-cell Li-ion battery, purchased separately)
Battery Life	Six-cell battery; Maximum 3-4 hours
Battery Charging Time	Approximate charging time of 2 hours (Tablet PC on); 1.2 hours (Tablet PC off)
AC Power Adapter	50W universal, 2-pin jack, 90~264V AC, 47-63Hz
LED System Status Indicators	Power/Stand By; Battery Status; Hard Drive Access; Wireless Activity
Software (standard)	Microsoft Windows XP Tablet PC Edition; Adobe Acrobat; Motion Computing Dashboard; customer support tools; online documentation; drivers
BIOS	512KB Flash BIOS ROM; suspend to RAM; suspend to disk; Password protection for system; ACPI 1.1 compliant; Pen/Button driven setup
Environment	Operating Temperature: 5 to 35 degrees Celsius Storage Temperature: -20 to +65 degrees Celsius Humidity: 10% to 90% without condensation Operation Altitude: 0 to 10,000 feet Storage Altitude: 0 to 40,000 feet
Physical Characteristics	
Size	296.0mm x 240.0mm x 22.0mm (11.7" x 9.4" x 0.90")
Carrying Weight	<3.0 lb (1.36KG) (in selected configurations)
Optional Accessories*	Motion M-Series FlexDock; Motion M-Series Desktop Stand; Motion M-Series Slip Case; Motion M-Series Hard Top Cover; Motion M-Series Standard Portfolio; Motion M-Series Executive Leather Portfolio; Motion M-Series Mobile Keyboard with Touch Pad; Motion M-Series Optical Disk Drive; Motion M-Series 3-cell Battery; Motion M-Series 6-cell Battery; 256MB Memory Upgrade for Motion M-Series; 512MB Memory Upgrade for Motion M-Series; Motion M-Series 40GB and 60GB hard drive upgrades.
	*New accessories may be added from time to time. For a list of the currently available accessories, see the Motion website at www.motioncomputing.com/accessories .
Service/Support	
Warranty	1 year limited warranty on the Motion M1200, Motion M-Series FlexDock, and Memory Upgrade Modules; 90 days on all other accessories. Extended warranty on the Motion M1200 is available for 1-year or 2-years. To read the Warranty, see the Warranty card packaged with your Motion M1200 or go to the Warranty chapter in this <i>User Guide</i> .
Motion Computing Support	Contact your Motion Computing reseller or go to the Motion Computing support website at www.motioncomputing.com/support .
Agency Certifications	
Emissions	FCC 15, Class B EN55022 (CISPR22) Class B ICES-003 Class B ETS 300 328 ETS 300 826 IC RSS 210
Immunity	EN55024
Safety	UL and cUL, UL1950 CSA C22.2 EN60950 TUV/GS
Telecom	FCC Part 68 IC CS03

Appendix E

Limited Warranties

LIMITED PRODUCT WARRANTY

Warranty Disclaimer

EXCEPT AS EXPRESSLY SET FORTH IN THIS LIMITED WARRANTY, MOTION COMPUTING MAKES NO OTHER WARRANTIES OR CONDITIONS, EXPRESS OR IMPLIED. ANY IMPLIED WARRANTIES THAT MAY BE IMPOSED BY LAW ARE LIMITED IN DURATION TO THE LIMITED WARRANTY PERIOD.

Warranty Coverage and Period

Motion Computing warrants that the Motion M-Series product(s) that you have purchased is free from defects in materials or workmanship for one(1) year from the date of product purchase.

This limited Warranty extends only to the original purchaser and is not transferable. This Limited Warranty does not extend to: Expendable parts; Products without serial numbers; Damage that results from (i) failure to follow the provided instructions; (ii) accident, misuse, abuse, or other external causes; (iii) operation outside the usage parameters stated in the user documentation; or (iv) use of parts not manufactured or sold by Motion Computing; or Damage due to modifications or service by anyone other than (i) Motion Computing, (ii) a Motion Computing authorized service provider, or (iii) your own installation of end-user replaceable Motion Computing parts.

Repair or Replacement

Replacement products or components are warranted to be free from defects in material or workmanship for thirty (30) days or for the remainder of the Limited Warranty Period of the Motion Product in which they are installed, whichever is longer. In the unlikely event that your Motion Product has a recurring failure, Motion Computing, at its discretion, may elect to provide you with a replacement product of Motion Computing's choosing that is at least equivalent to your Motion Product in performance. Motion Computing reserves the right to elect, at its sole discretion, to give you a refund of your purchase price or lease payments (less interest) instead of a replacement. THIS IS YOUR EXCLUSIVE REMEDY FOR DEFECTIVE PRODUCTS. To obtain warranty service, please contact Motion Computing at www.motioncomputing.com/support.

Limitation of Liability

IF YOUR MOTION COMPUTING PRODUCT FAILS TO WORK AS WARRANTED ABOVE, YOUR SOLE AND EXCLUSIVE REMEDY SHALL BE REPAIR OR REPLACEMENT. MOTION COMPUTING'S MAXIMUM LIABILITY IS LIMITED TO THE LESSER OF THE PRICE YOU HAVE PAID FOR THE PRODUCT OR THE COST OF REPAIR OR REPLACEMENT OF ANY COMPONENTS THAT MALFUNCTION IN CONDITIONS OF NORMAL USE. MOTION COMPUTING SHALL NOT BE LIABLE FOR ANY INCIDENTAL, SPECIAL, OR CONSEQUENTIAL DAMAGES RELATING TO THE PRODUCT, INCLUDING ANY LOST PROFITS OR LOSS OF DATA, REGARDLESS OF WHETHER MOTION COMPUTING KNEW OR SHOULD HAVE KNOWN OF THE POSSIBILITY OF SUCH DAMAGE. THIS LIMITATION OF LIABILITY APPLIES WHETHER DAMAGES ARE SOUGHT, OR A CLAIM MADE, UNDER THIS LIMITED WARRANTY OR AS A TORT CLAIM, CONTRACT CLAIM, OR OTHER CLAIM. THIS LIMITATION OF LIABILITY, HOWEVER, WILL NOT APPLY TO CLAIMS FOR PERSONAL INJURY. SOME STATES OR COUNTRIES DO NOT ALLOW THE EXCLUSION OR LIMITATION OF INCIDENTAL OR CONSEQUENTIAL DAMAGES, SO THE ABOVE MAY NOT APPLY TO YOU. THIS LIMITED WARRANTY GIVES YOU SPECIFIC LEGAL RIGHTS. YOU MAY ALSO HAVE OTHER RIGHTS THAT MAY VARY FROM STATE TO STATE OR FROM COUNTRY TO COUNTRY.

LIMITED ACCESSORY WARRANTY

Warranty Disclaimer

EXCEPT AS EXPRESSLY SET FORTH IN THIS LIMITED WARRANTY, MOTION COMPUTING MAKES NO OTHER WARRANTIES OR CONDITIONS, EXPRESS OR IMPLIED. ANY IMPLIED WARRANTIES THAT MAY BE IMPOSED BY LAW ARE LIMITED IN DURATION TO THE LIMITED WARRANTY PERIOD.

Warranty Coverage and Period

Motion Computing warrants that the Motion M-Series product(s) that you have purchased is free from defects in materials or workmanship for the following period from the date of product purchase.

Product	Warranty Period
Motion M-Series FlexDock	1 year
M-Series Memory	1 year
All other M-Series Accessories	90 days

This limited Warranty extends only to the original purchaser and is not transferable. This Limited Warranty does not extend to: Expendable parts; Products without serial numbers; Damage that results from (i) failure to follow the provided instructions; (ii) accident, misuse, abuse, or other external causes; (iii) operation outside the usage parameters stated in the user documentation; or (iv) use of parts not manufactured or sold by Motion Computing; or Damage due to modifications or service by anyone other than (i) Motion Computing, (ii) a Motion Computing authorized service provider, or (iii) your own installation of end-user replaceable Motion Computing parts.

Repair or Replacement

Replacement products or components are warranted to be free from defects in material or workmanship for thirty (30) days or for the remainder of the Limited Warranty Period of the Motion Product in which they are installed, whichever is longer. In the unlikely event that your Motion Product has a recurring failure, Motion Computing, at its discretion, may elect to provide

you with a replacement product of Motion Computing's choosing that is at least equivalent to your Motion Product in performance. Motion Computing reserves the right to elect, at its sole discretion, to give you a refund of your purchase price or lease payments (less interest) instead of a replacement. THIS IS YOUR EXCLUSIVE REMEDY FOR DEFECTIVE PRODUCTS. To obtain warranty service, please contact Motion Computing at www.motioncomputing.com/support.

Limitation of Liability

IF YOUR MOTION COMPUTING PRODUCT FAILS TO WORK AS WARRANTED ABOVE, YOUR SOLE AND EXCLUSIVE REMEDY SHALL BE REPAIR OR REPLACEMENT. MOTION COMPUTING'S MAXIMUM LIABILITY IS LIMITED TO THE LESSER OF THE PRICE YOU HAVE PAID FOR THE PRODUCT OR THE COST OF REPAIR OR REPLACEMENT OF ANY COMPONENTS THAT MALFUNCTION IN CONDITIONS OF NORMAL USE. MOTION COMPUTING SHALL NOT BE LIABLE FOR ANY INCIDENTAL, SPECIAL, OR CONSEQUENTIAL DAMAGES RELATING TO THE PRODUCT, INCLUDING ANY LOST PROFITS OR LOSS OF DATA, REGARDLESS OF WHETHER MOTION COMPUTING KNEW OR SHOULD HAVE KNOWN OF THE POSSIBILITY OF SUCH DAMAGE. THIS LIMITATION OF LIABILITY APPLIES WHETHER DAMAGES ARE SOUGHT, OR A CLAIM MADE, UNDER THIS LIMITED WARRANTY OR AS A TORT CLAIM, CONTRACT CLAIM, OR OTHER CLAIM. THIS LIMITATION OF LIABILITY, HOWEVER, WILL NOT APPLY TO CLAIMS FOR PERSONAL INJURY. SOME STATES OR COUNTRIES DO NOT ALLOW THE EXCLUSION OR LIMITATION OF INCIDENTAL OR CONSEQUENTIAL DAMAGES, SO THE ABOVE MAY NOT APPLY TO YOU. THIS LIMITED WARRANTY GIVES YOU SPECIFIC LEGAL RIGHTS. YOU MAY ALSO HAVE OTHER RIGHTS THAT MAY VARY FROM STATE TO STATE OR FROM COUNTRY TO COUNTRY.

Product Support

Technical assistance with questions and issues about any software included with the Motion Computing product is available for the first ninety (90) days from date of product purchase. Please visit our website for service and support at www.motioncomputing.com/support

(C) 2003 Motion Computing, Inc.

Motion Computing and the Motion logo are trademarks of Motion Computing, Inc.

Index

A

- AC adapter vii
 - foreign use xii
- AC mini-plug 9
- AC power adapter 9, xii
 - wrong 40
- Accessories 2, 14, viii
 - FlexDock 14
 - Hard Top Cover 15
 - Keyboard 15
 - Memory Upgrade Modules 16
 - Optical Disk Drives 16
 - Portfolio 15
- Adding memory 39
- Adjusting brightness 36
- Administrator password 24
- Alarms 37
- Analog telephone jack 10
- Application CD 18
- Arrow keys 10, 35

B

- Battery 8, viii, xii
 - and storing the Tablet 48
 - Battery Status Gauge 12
 - Battery Status LED 38
 - changing 38
 - charging 38
 - check status 11
 - Dashboard 20
 - disposing of 39
 - functions 9
 - gauge 38
 - hints 39
 - overheated 38
 - reading the Power Meter 36, 38
 - recharging 38
 - re-charging bridge battery 38
 - recharging time 38
 - Status 11
 - temperature 9

- testing the charge 38
- troubleshooting viii
- type to use 38
- Battery Status 11
- Battery status gauge 8, 12
- BIOS
 - accessing 46
 - exiting 46
- Bridge battery
 - recharging 38
- Bridge battery time limit 38
- Brightness 20
- Button functions
 - Alt + Tab 10
 - Tablet PC Input Panel 10
- Buttons
 - changing defaults 35
 - Escape button 10
 - Function button 10
 - Hot Key #1 (Dashboard) 10
 - primary functions 10
 - Resetting button functions 35
 - secondary functions 10
 - Security xi
 - setting functions x

C

- Cable connections
 - DVD, CDRW 40
- Calibrating 20, ix
- Caution iii
- CDROM 40
- CDRW 40
- Cleaning recommendations 48
- Cloning 40
- Commands
 - voice 44
- Computer name 24

D

Dashboard 20
 and Stand By mode 38
 Calibrate Pen button 28
 Quick Keys 20
 shortcuts 20
Default power scheme 37
Desktop Stand 14
Dictation 44
Did You Know updates 5
Display
 brightness 36, viii
 cleaning 48, xii
 orientation 34
 performance xii
Display Brightness 20
Display Rotation 20
Display screen 48
Domain name 24
Dual Head Video Controller 40
DVD/CDRW 40

E

Enable 802.11 Wireless Radio 43
End User License Agreement 24
Ethernet
 troubleshooting xi
Extended desktop 42

F

FAQs xii
Faxing 10
FCC i
Features 1
FlexDock 14, 41, x
Frequently Asked Questions (FAQs) xii
Function button. See Pen, function button 28

G

Gauge 12
Gestures, Pen 29
Graphics 41, 42

Graphics Properties 20
Grounding 39

H

Hard drive 8, xi
Hard Drive LED 11
Hard Top 48
Hard Top Cover 15, 48
HDD password 45
Headphone 8
Help and Support Center xi
Hibernate
 Power Management 39
Hibernation
 definition of 26
 exiting 27
 troubleshooting viii
 when to use 26

Hints

battery 39
Power Management 39
Wireless 17
Hot Key #2 (Orientation) 10, 34
Hot Key #2 (orientation) 34
Hot Keys 35

I

I/O 2
IEEE 1394 40
Important iii
Ink 30
 definition iii
Inkball 4
Intel Extreme Graphics 41, 42
Internet
 initializing in Windows XP 23

J

Journal. See Windows Journal 31

K

Keyboard 15
Keyboard, USB 24

L

LEDs

- Battery Status 11
- front panel 11
- Hard Drive 11
- Power/Stand By 11
- status 11
- Wireless 11

Lithium-ion battery 2

Lock slot 8

Locked, HDD Password 47

M

Max Battery power setting viii, xii

Memory 8, 39
amount of 40

Memory configurations 17

Memory upgrade modules 16

Microphone

- built-in 8
- jack 8
- troubleshooting x

Microphone Wizard 44

Mini-PCI card 1, 8, 17

Modem 10

Motion M1200 Tablet PC

- care 47
- chassis 9
- features 1
- software 23
- starting and stopping 25
- storing 48

Motion M-Series Digitizer Pen 9

Multimedia 45

O

Operating system
troubleshooting xi

Optical Disk Drive

- AC power adapter 40
- cables 40
- diagram 40
- installation 40

Optical Disk Drives 16

Orientation

- changing 34

P

Package contents 2

Password

- forgotten 46
- HDD 45
- operating system 45
- Password on boot 46
- removing 47
- system 45

PBX 10

PC card

- PC card slot 8, 17

Pen

- adjusting properties 29
- and mouse 29
- backspace gesture 30
- button 27
- calibrating 9, 27
- care 29, 48
- description 6
- double-tap iii, 27
- electronics 48
- function button 28
- gestures 29
- hints for using 28
- ordering 49
- overview 27
- pen tether anchor 8
- pointer 28
- practice 3
- press and hold iii, 27
- replacing pin tips 49
- right-click iii, 27
- select/highlight iii, 27
- tap and drag iii, 27
- troubleshooting ix, x

- using on the display 48
- Windows XP pen functions 22
- writing with 28
- Pen Calibration 20
- Peripheral devices 14
- PhoenixBIOS Setup Utility 46
- Plugging in wrong AC power adapter 40
- Portfolio 15, 48
- Ports
 - IEEE 1394 8
 - LAN (RJ-45) 10
 - modem (RJ-11) 8, 10
 - troubleshooting x
 - USB 8
 - VGA monitor 8, 41
- Power Management 20
 - hints 39
- Power Meter 37
- Power Schemes 37
- Power switch 8, 25
 - troubleshooting vii
- Power/Stand By LED 11
- Preview window 30
- Product Key 23

- Q**

- Quick Keys
 - Dashboard 20

- R**

- Radio Frequency i
- Regulatory Compliance i
- RJ-11 10

- S**

- Safety instructions xv
- Scheme
 - screen resolution 45
- Screen resolution viii
 - changing 44
 - setting up a new scheme 45
- Security 45
 - disabling passwords 47
- Security button 10
- Set System Password 46
- Shortcuts
 - Dashboard 20
- Slot A 17
- Slot B 17
- Smart battery 11
- Software 18
 - Dashboard 20
 - Microsoft activation 23
- Speaker Volume 20
- Speakers 8
 - troubleshooting x
- Speech
 - headset microphone 44
 - Listening... 44
 - Not Listening 44
- Speech recognition 21
 - setting up 44
- Stand By 20
 - battery change limitation 38
 - bridge battery 38
 - definition of 26
 - exiting 27
 - Power Management 39
 - troubleshooting viii
 - when to use 26
- Stand By mode 14, 38
- Starting and stopping 25
- Sticky Notes 22, 33
- Support
 - warranty repairs xiii
- System Properties ix
- System Restore and Recovery CDs 18

- T**

- Tablet and Pen Settings 22
- Tablet PC Input Panel
 - getting text to appear in 31
 - icon 30
 - ink 30
 - send as Ink 30
 - Sending as Text 31
 - writing 20
- Tablet PC Tutorials 4

Take a Tour of Windows XP 5
Task Manager 10
Temperature 48
Throughput 10
Touchpad 15
 scroll zone 15
Travel xii
 adjusting power settings 50
 international 50
 wireless on airplanes 49
Troubleshooting i-??
Tutorials, Tablet PC 4

troubleshooting xi
Wireless access point
 connecting to 43
 range 43
Writing 6
Writing with the Pen 28

X

xDSL 10

U

USB 40
 keyboard requirement 23
USB Keyboard 15
Utilities and Drivers CD 18

V

VGA 41
Video Mode 45
Voice commands 21
Voice notes 33

W

Warning iii
Warranty repairs xiii
Windows Journal 8, 22
 inserting a Text Box 31
 writing to 31
Windows XP Pen Functions 22
Windows XP Tablet PC Edition
 initilizing 23
Wireless 1, 17, xii
 Control Panel 43
 Dashboard 20, 43
 disabling for air travel 43, 49
 Enable 802.11 Wireless Radio 43
 FAA regulations 43, 49
 setting up
 Wireless
 non-secure 43