

WIGO 800I Installation Manual

Your Best GSM & WiFi Phone Partner

BCM Communication Co., Ltd.

Introduction

This is a start up manual for **WIGO800I**, a GSM-Wireless VoIP Dual mode Phone of BCM. Before using this unit, some configurations are required to make the phone work properly. Make sure that DHCP server is available, and handsets can register itself to AP correctly. Otherwise, you should setup the IP address of this unit by yourselves. You can use any of your current GSM SIM card in this unit. Thank you for choosing **WIGO800I** for your dual world experience.

Owner's Record

The MAC address is located inside battery compartment. Record the MAC address in the space provided below. It may be required whenever you contact your service provider. Or you can check it inside the phone system by manual, please refer to the chapter PhoneSettings.

Model No. : WIGO800I

MAC Address : _____

Dealer : _____

Limited Warranty

- BCM warrants to you that, for a period of one year (the "Warranty Period"), your equipment will be substantially free of defects in materials and workmanship under normal use. Your exclusive remedy and BCM's entire liability under this warranty will be for BCM at its option to repair or replace the product or refund your purchase price less any rebates. This limited warranty extends only to the original purchaser.
- This product (including document, contents, and firmware of this device) is provided "AS IS". Except as required by applicable law, no warranty of any kind, express or implied conditions, representations and warranties, including but not limited to all implied warranties and conditions of merchantability and fitness for a particular purpose and non-infringement. BCM reserves the right to make changes, improvements, revises or withdraw to any of the product at anytime without prior notice.
- If the product proves defective during the Warranty Period call BCM technical support in order to obtain a return authorization number, if applicable. If you are requested to return the product, mark the return authorization number clearly. You are responsible for shipping defective products to BCM.



- This warranty does not apply if the product (a) has been altered, except by BCM, (b) has not been installed, operated, repaired, or maintained in accordance with instructions supplied by BCM, or (c) has been subjected to abnormal physical or electrical stress, misuse, negligence, or accident. In addition, due to the continual development of new techniques for intruding upon and attacking networks, BCM does not warrant that the product will be free vulnerability to intrusion or attack.
- To the extent not prohibited by law, BCM is liable for any loss or damaged data, any revenue or profit, or for special, incidental, consequential, indirect or punitive damages, regardless of the theory of liability (including negligence), arising out of or related to the use of or inability to use the product (including any software) howsoever caused. The foregoing limitations will apply even if any warranty or remedy provided under this agreement fails of its essential purpose. Some jurisdictions do not allow the exclusion or limitation of incidental or consequential damages, so the above limitation or exclusion may not apply to you.
- Unauthorized changes or modifications to this device may void your authority to operate the equipment.
- This product is protected by certain intellectual property rights of Microsoft Corporation. Use or distribution of such technology outside of this product is prohibited without a license from Microsoft or an authorized Microsoft subsidiary.
- This product includes Skype™ Version V1.1.0.20. **This product uses the Skype API but is not endorsed or certified by Skype.**
- IP TV, IP Radio, films, pictures and other materials may be copyrighted. Unauthorized recording of such materials may violate copyright laws.
- Use, transfer, or distribution of part or all of this product in any form without the prior written permission of BCM is prohibited.
- Certain features, such as Skype, MSN, IP TV, IP Radio are branded services provided by third parties. BCM does not guarantee such services or warrant their continued availability.

Note for Use

- The availability of particular products may vary by region. Screen shots in this manual may be different from the actual displays in the supplied software.
- Emergency call is available to use while there is not a SIM Card inserted.
- **GSM radio and WLAN radio are not operating simultaneously.**

On Copyrights

Copyright © 2007 BCM. All rights reserved.

- Other products and brands mentioned herein maybe trademarks or registered trademarks of their respective owner.

- The LCD of your device is designed with precision technology. However, in some cases, individual pixels may remain lit or may not light at all. Also, the brightness of the display may appear inconsistent, depending on the angle of view. Such anomalies are caused by the nature of the LCD and do not indicate a malfunction. Please note that BCM does not guarantee a replacement or refund for such cases. Do not expose the LCD to direct sunlight for prolonged periods of time. It may result in a malfunction. Do not store your device in areas subject to sunlight, such as near windows, and be careful when using outdoors.
- **Please take few minutes to run-through this manual, especially pay attention on [Note], they can be very useful and important notice for you to use this phone. Do not skip these notice.**

Federal Communication Commission Interference Statement

This equipment has been tested and found to comply with the limits for a Class B digital device, pursuant to Part 15 of the FCC Rules. These limits are designed to provide reasonable protection against harmful interference in a residential installation. This equipment generates, uses and can radiate radio frequency energy and, if not installed and used in accordance with the instructions, may cause harmful interference to radio communications. However, there is no guarantee that interference will not occur in a particular installation.

If this equipment does cause harmful interference to radio or television reception, which can be determined by turning the equipment off and on, the user is encouraged to try to correct the interference by one of the following measures:

- Reorient or relocate the receiving antenna.
- Increase the separation between the equipment and receiver.
- Connect the equipment into an outlet on a circuit different from that to which the receiver is connected.
- Consult the dealer or an experienced radio/TV technician for help.

This device complies with Part 15 of the FCC Rules. Operation is subject to the following two conditions: (1) This device may not cause harmful interference, and (2) this device must accept any interference received, including interference that may cause undesired operation.

FCC Caution: Any changes or modifications not expressly approved by the party responsible for compliance could void the user's authority to operate this equipment.

IMPORTANT NOTE:

FCC Radiation Exposure Statement:

This equipment complies with FCC radiation exposure limits set forth for an uncontrolled environment. End users must follow the specific operating instructions for satisfying RF exposure compliance.

This transmitter must not be co-located or operating in conjunction with any other antenna or transmitter.

Specification & Key Features

- GSM & Wi-Fi Dual Standby
- GSM Quadri-Band 850/900/1800/1900 Supported
- 802.11b/g WLAN Support
- Frequency
 - FCC -- Channel 1~11 Supported
 - CE -- Channel 1~13 Supported
 - JP -- Channel 1~14 Supported

■ SMS Supported

■ MPEG-4, WMV, MP3 Support

■ Skype / MSN Installed

⌚ This product uses the Skype API but is not endorsed or certified by Skype.

■ Hot Spot Auto-Login

■ Battery Power

- GSM + WLAN Dual Standby Time up to 50 Hours
- Talking Time up to 3 Hours

⌚ Actual talk time vary according to different operating environments. Battery talk and standby times are estimates only and depend on network configuration, signal strength, features used, battery age and condition, charging practices, temperatures to which battery is exposed, and many other factors. Please note that the amount of time a phone is used for calls, Skype, or MSN will affect its standby time. Likewise, the amount of time that the phone is turned on and in standby mode will affect its talk time.

■ 2.2" 240 x 320 pixels with 65k color TFT-LCD

■ Dimension : 121 x 46.5 x 19.5mm

■ 4.8oz

■ Battery: LI-ION 1500mAh

■ Memory 32MB Flash / 128MB SDRAM

⌚ Please note that actual free memory may vary due to phone pre-configuration.

■ T Flash supported

■ Stereo Earphone Jack

■ miniUSB Charging Mechanism

■ Multiple Languages -- • English • Spanish

■ Support G.711, G.729 Codec

■ Support RFC3261 SIP V2 / RFC2327 SDP

■ 3-way Conference Call

■ Support VOD (Video On Demand)

■ Web Camera Streaming

■ IE Browser Installed

■ Phone Book & Speed Dial

■ Web GUI

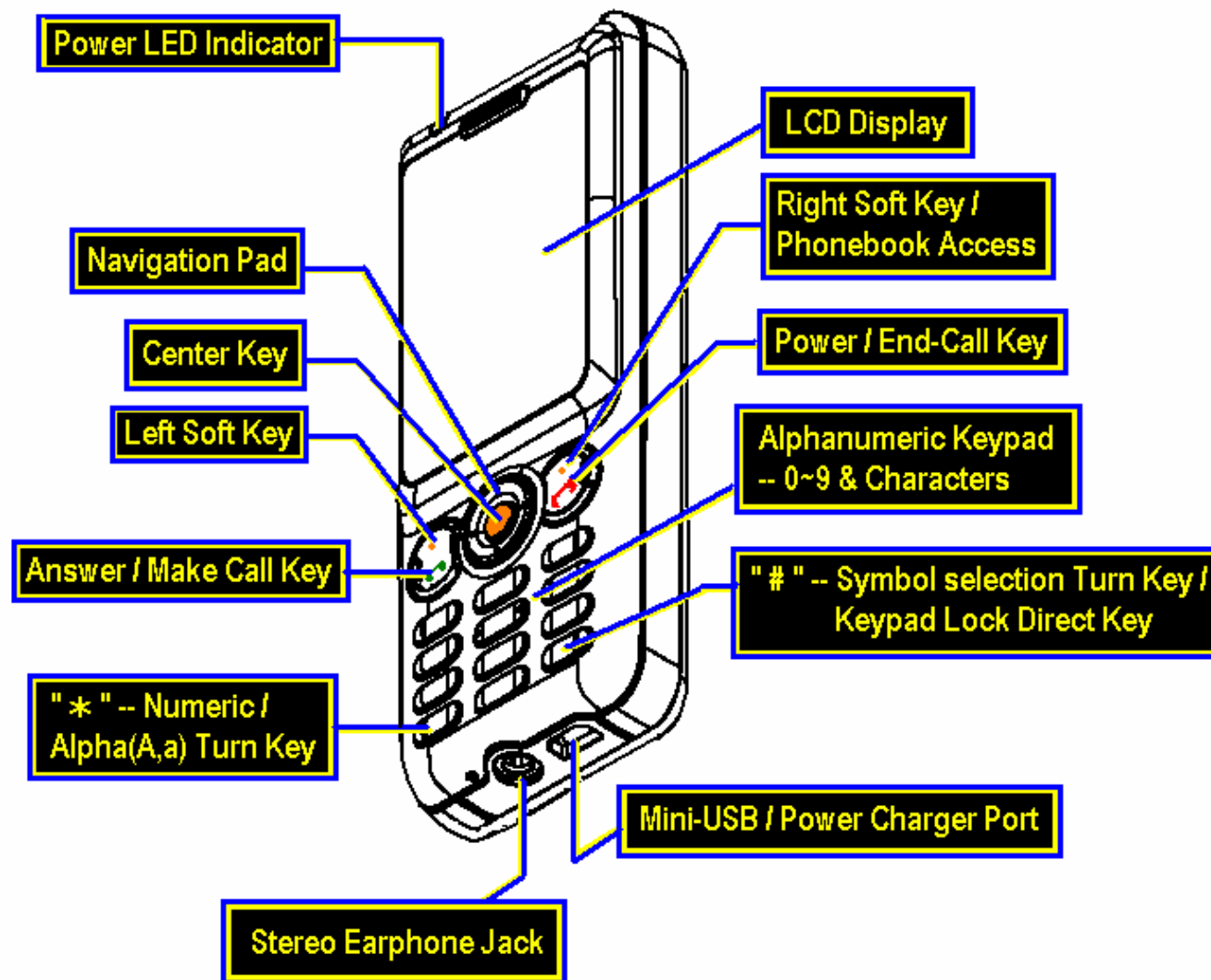
■ Software Auto-Upgrade through Internet / Auto-Provisioning

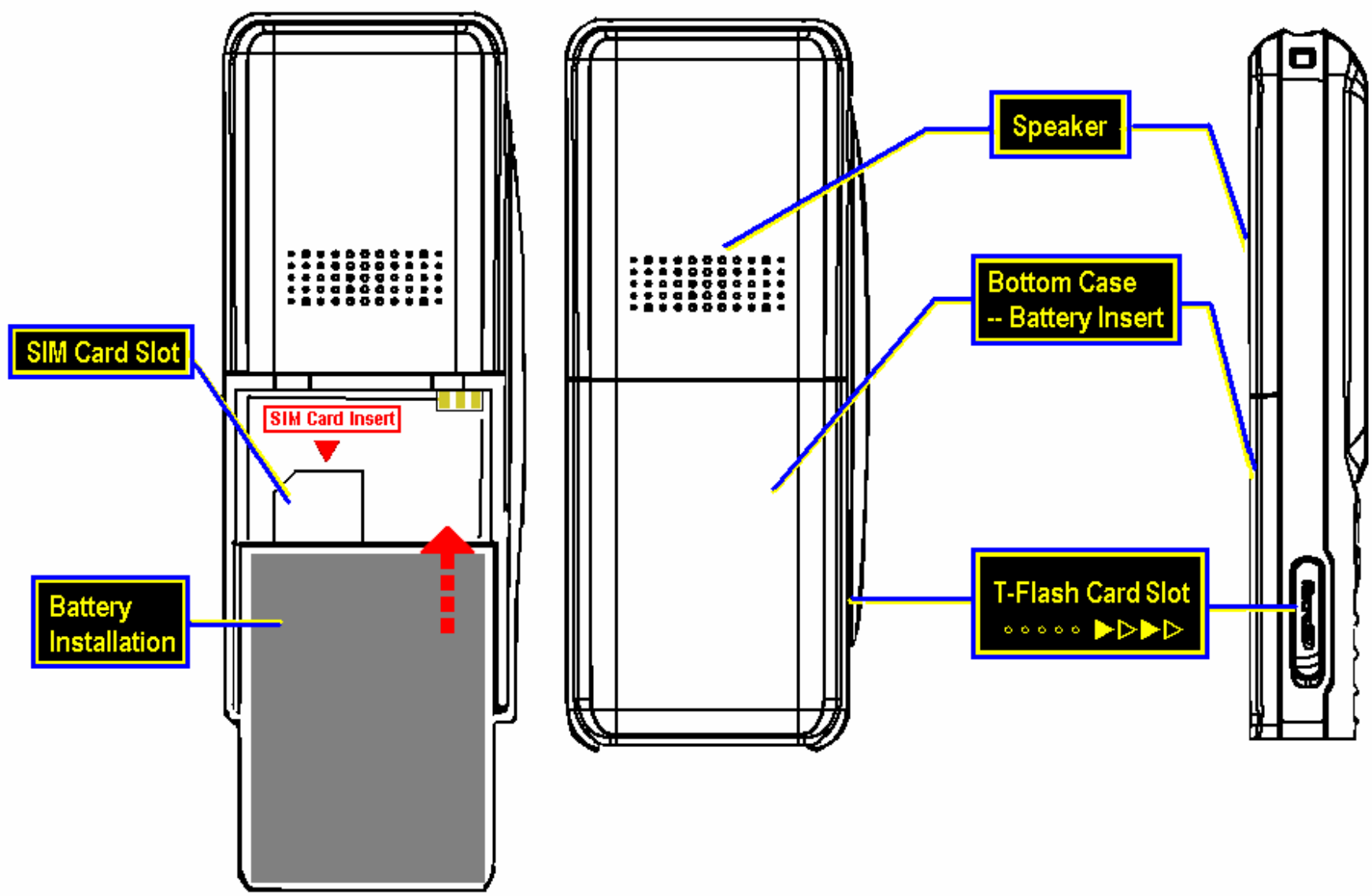
⌚ Please note that local variations may apply.

■ Support 64/128-bit WEP Key

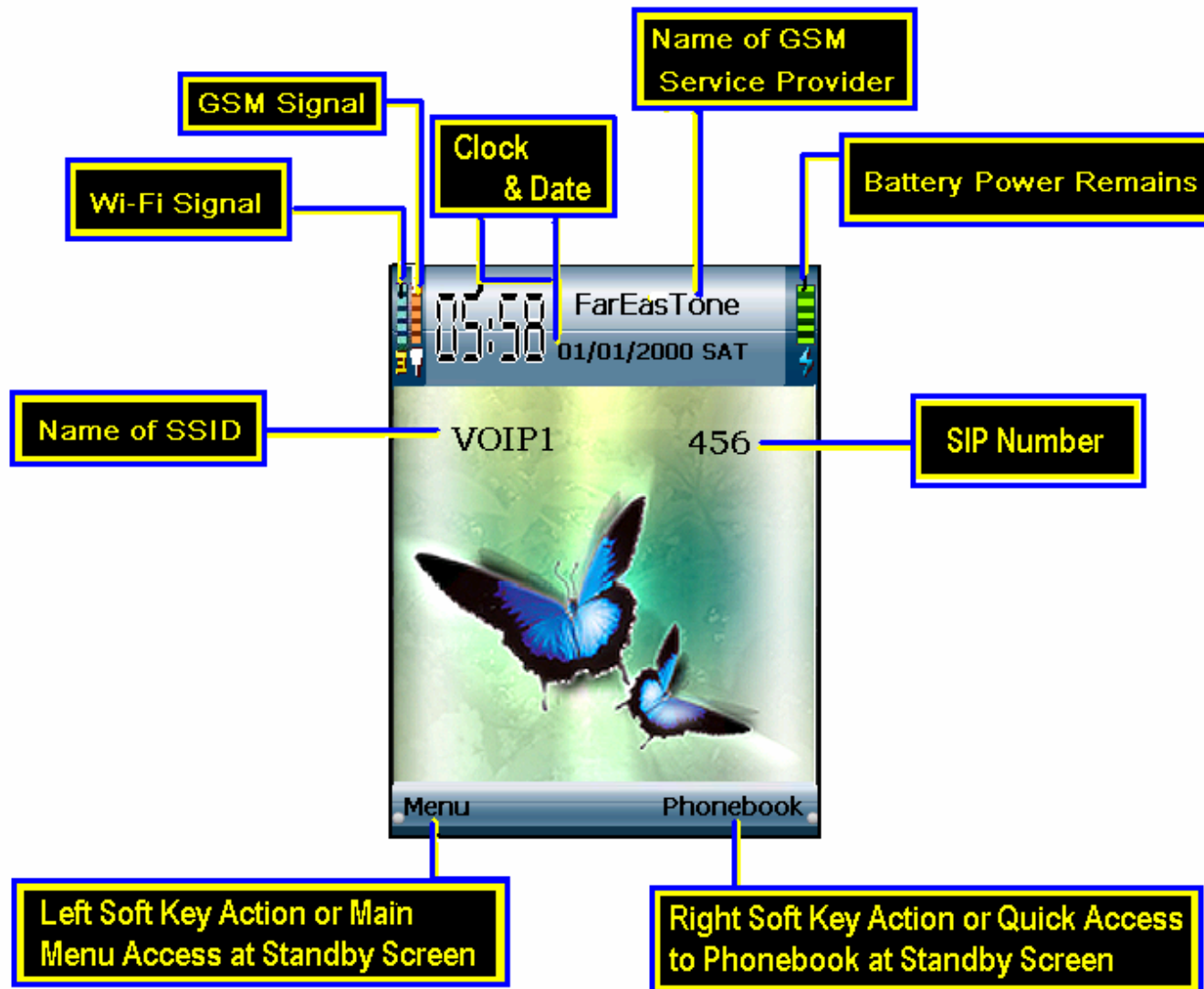
■ Support WPA-PSK Encryption

Understand Your Phone






The Information at Stand-by Display



Make Calls

You can make calls by selecting from Phonebook or dial the number directly. There are 2 phone call service types for you to make a voice call – GSM or SIP.


1 To start a voice call directly, enter the phone number in the standby mode, including the area code if you want to make GSM calls.

The phone calls service type will show at the left top of the window, you can press the center key  to switch between GSM and SIP calls.





For international calls, Press the asterisk key * twice for the “+ ” character before a country code.

To make a call from Phonebook, press right soft key to the contact list, or you can also enter the first letter of the name to the search field, a matching contacts will be listed.

Scroll to the desired name and press , there will be options of call type for you to select, choose one--SIP or GSM—and press **make call key** again.



- 2 Press  to call the number.
- 3 Press  to end the call, or deny an incoming call.

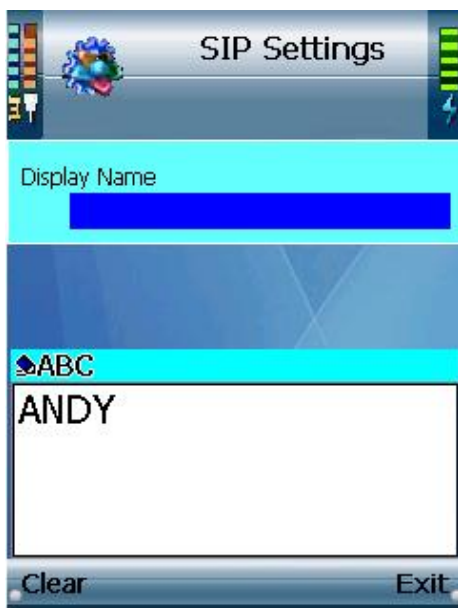
Continued 

SIP Settings

Make sure you already have a SIP account pre-set in the unit by your service provider. If you do not have a SIP number, please contact your service provider.

[Hint] Menu → Phone Settings → SIP Settings

If you want to show your name to people you call, Press left soft key to edit your “Display Name”, use center key to save and then return.



[Note]

- 1 You can use SIP type just same as ordinary GSM call, however you must have an **active internet connection** since the SIP call dialing till end of the call.
- 2 For both way to make calls, You can select **Option** during a call connected, there are several line options available. You can make any line action anytime by selecting from the line options list.
- 3 To change the volume during a call, You can use the **navigation pad** to adjust Volume.

Continued →→→

Communications

Before You start

Make sure your network has an active internet connection.

Skype

[Hint] Menu → Skype → Settings

If you have not yet registered Skype ever, Go to Skype website and get a Skype Name!

- 1 Press **Select** to start your Skype account settings.
- 2 Select “Edit” to enter your Skype account information—Name, Password, and Skypeout Country Code (for Skype out dialing), then press center key to save and then return to previous page.



Scroll to **Skype**, press select to log in.



MSN

[Hint] Menu → MSN → Settings

If you have not yet registered MSN ever, Go to MSN website and sign up for service!

- 1 Press **Select** to start your MSN account settings.

Continued →→→

- 2 **Edit** your MSN **registered Mail-address** and password in Settings, press center key to save and then return.



- 3 Scroll to "MSN", select it to sign you in.



[Note]

You need ONLY 1 Time to set your Skype and MSN account information. After the first log-in, Skype and MSN will automatically log in while you select to log in by the account information saved in your handset.

If you want to log in by another account, please follow the steps above.

When the connection is not stable, or incorrect account information input, a log-in error may occur, the system will pop-out a notify message and fix it automatically. Please try the steps again and make sure you enter every words correct.

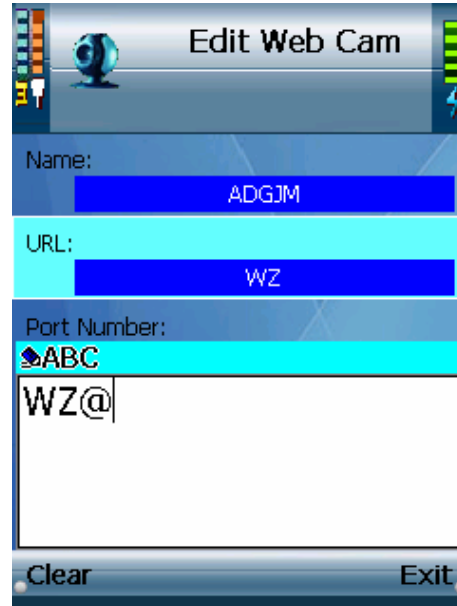
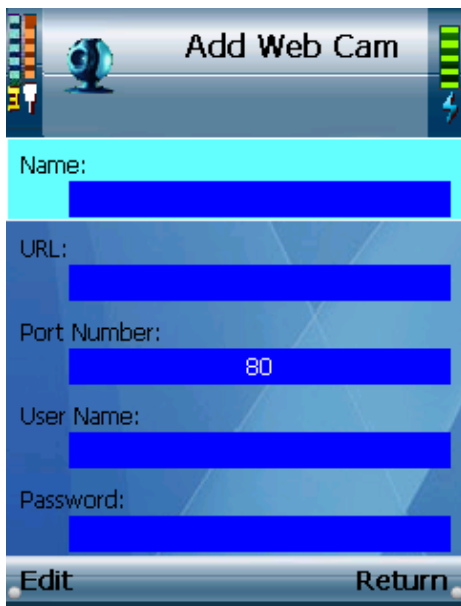
Continued →→→

Web Camera

[Hint] Menu → Web Cam → Option → Edit/Add/Delete

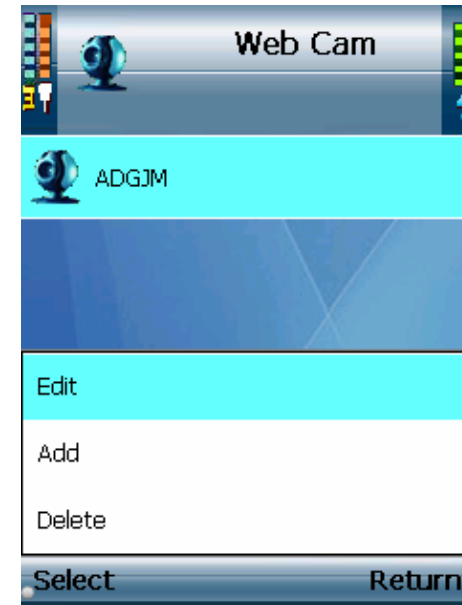
To watch web camera streaming, you need to set up the URL information of a web camera in the profile first.

- 1 To create a new web camera streaming URL, select **Add** in **Option** menu.



A settings list will be displayed, enter the required **User Name** and **Password** (if necessary). Press center to save and then return.

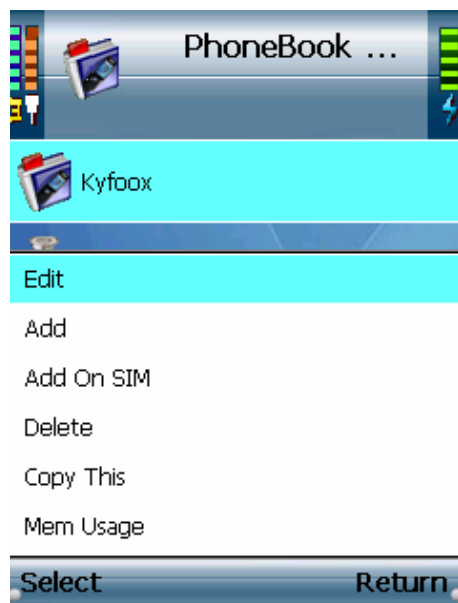
- 2 Navigate on your web camera profile list, use center key to activate your selection, it will connect to the web camera you select automatically.
- 3 If you want to modify the settings of an existed web cam in your profile, select **Edit** in **Option** menu, and follow the steps above.



Continued →→→

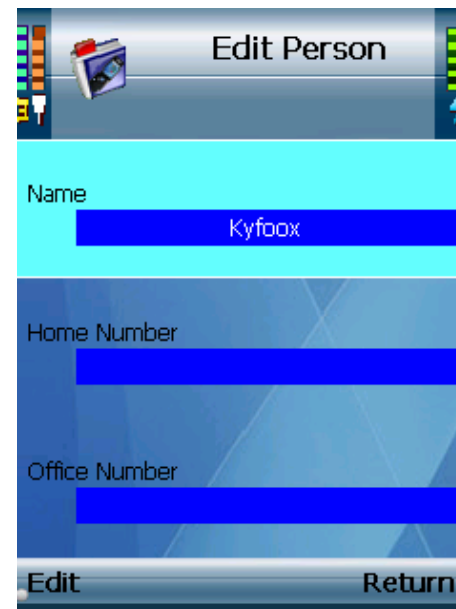
Phone Book

You can manage your phonebook in **Option** menu. Press **left soft key** to activate it.



[Hint] Menu → Phone Book → Edit

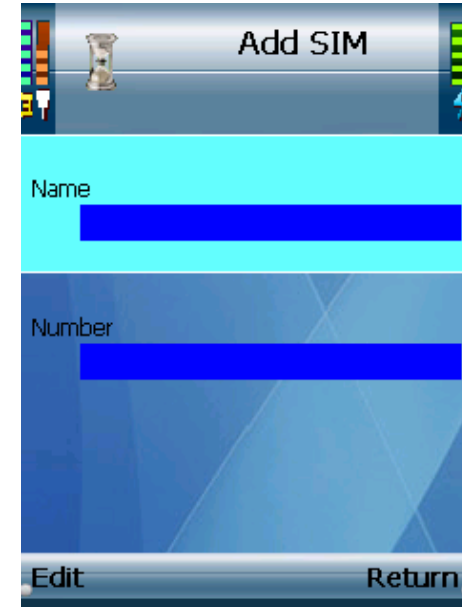
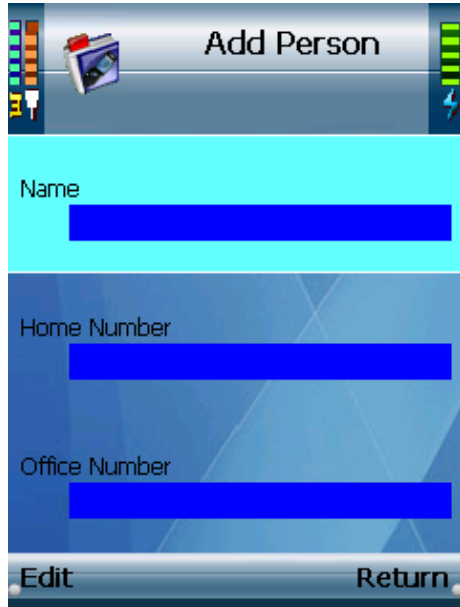
- 1 To **edit an existed contact** information of your phonebook list, scroll to **Edit** and activate the Edit Person menu. Fill in the any item you want to modify -- **Name**, 2 single **Home Number**, 2 single **Office Number**, 2 single **Mobile Number**, and **E-Mail** address. You can also edit the personal settings of **Speed-Dial Number**, and **Ring Tone** for each contact person in your phonebook. These contact information will only be saved in this device.



[Hint] Menu → Phone Book → Add

- 2 To **add a new contact**, scroll to **Add** and select to activate the Add Person menu. Fill in the any item you want to modify -- **Name**, 2 single **Home Number**, 2 single **Office Number**, 2 single **Mobile Number**, and **E-Mail** address. You can also edit the personal settings of **Speed-Dial Number**, and **Ring Tone** for each contact person in your phonebook. These contact information will only be saved in this device.

Continued ⇨⇨⇨



[Hint] Menu → Phone Book → Add On SIM

- 3 To add a new contact in your SIM card, scroll to **Add On SIM** and select to activate the menu. There are only 2 items for you to edit – **Name** and **Number**. Press **Edit** to enter the contact information, and use center key to save the name and number of your contact for SIM card only!

[Tip] In edit mode, use asterisk key “*” to switch between capital letters (A,B,C), lowercase letters (a,b,c), and numbers(1,2,3)

[Hint] Menu → Phone Book → Delete

- 4 To delete an existed contact person, scroll to **Delete**, press **Select** or **center key**, and it will be deleted directly.

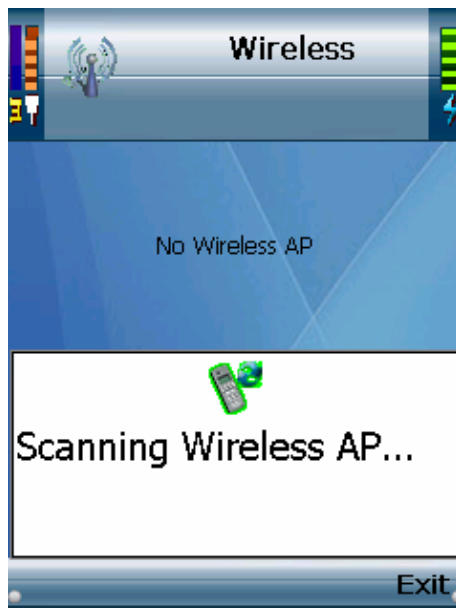
Continued ⇨⇨⇨

Wireless Configuration

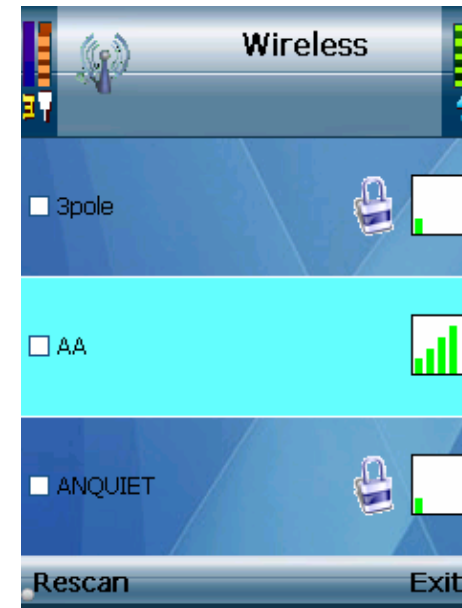
Set WiFi – Wi-Fi Scanning

[Hint] Menu → Phone Settings → Wireless → Set WiFi

- 1 Power on your phone, it will auto-scan wireless networks (WLANs) by your Profiles (if you have any saved in your phone.)
- 2 To set WLANs by manual, press **left soft key** to activate **Select**, or press **center key** at stand-by screen. The unit will start to find available WLANs nearby.



- 3 A list will display, press **center key** to select the network name (SSID) of the listed WLANs you want to join in, and your handset will connect to the network automatically.

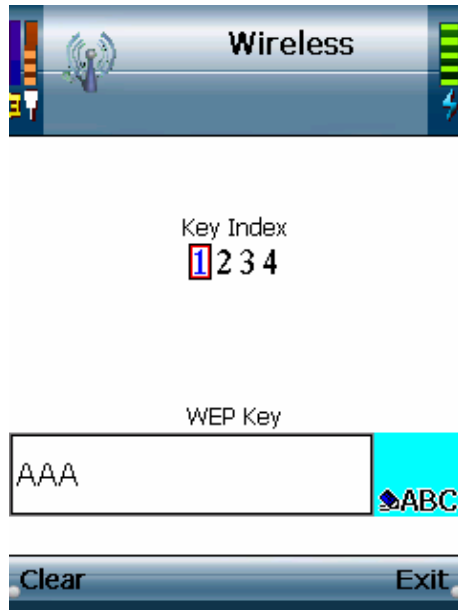


- 4 Select **Exit** when WLAN connection successfully, or press **left soft key** to **Rescan** for connecting again.

[Note] The Key Index will pop out if a WEP Key / WPA Key is required. Enter the WEP Key / WPA Key and then press **center key**, the connection will continue.

Continued →→→

[Tip] You can use asterisk key(“*”) to switch between capital letters (A,B,C), lowercase letters (a,b,c), and numbers(1,2,3) for WEP/WPA key insert.

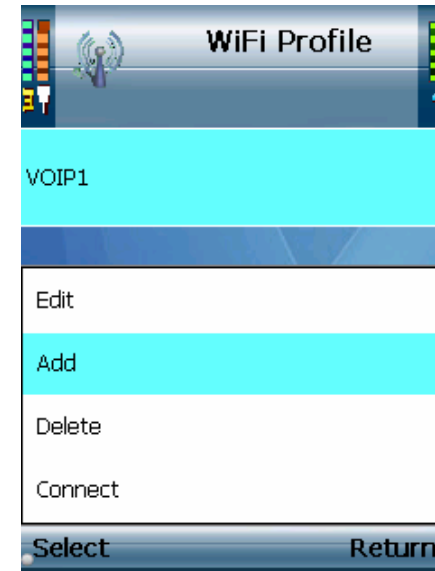


Profile – Set Your Wi-Fi Profile

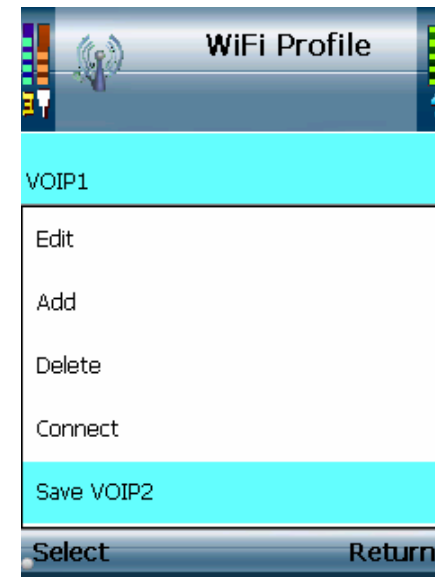
[Hint] Menu → Phone Settings → Wireless → Profiles

- 1 Select **Add** in **Option** to set WLAN you want as a location profile, edit the WLAN information in the displayed settings list.

[Tip] In **Option** you can manage the profile in order, **Edit** the settings, or select to **Connect**.



You can save the current connected WLAN as a location profile in **Option**.



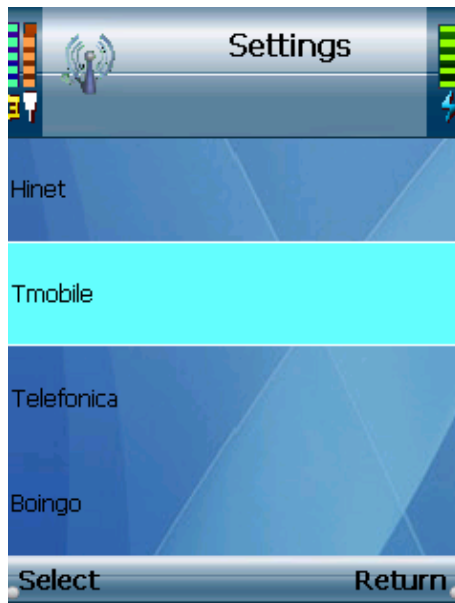
Continued →→→

Hotspot – Auto HotSpot Log-in

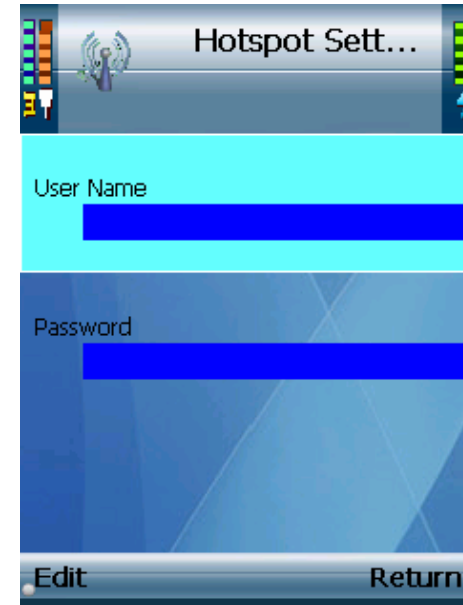
[Hint] Menu → Phone Settings → Wireless → Hotspot

When you stay in a Hotspot coverage, the unit will pop out IE browser to notify and log in automatically if you have set up your account in your device.

- 1 If you already have a Hotspot account, scroll to the Hotspot in Settings menu and press **Select** to enter.



- 2 A list of settings will be displayed. Press **Edit** to set your User Name and Password, and use **center key** to save and then return.



[Note]

There are 4 Hotspot services are supported currently -- [Hinet](#), [Tmobile](#), [Telefonica](#) and [Boingo](#). Please note that local variations may apply and increase continually.

Continued →→→

Phone Settings

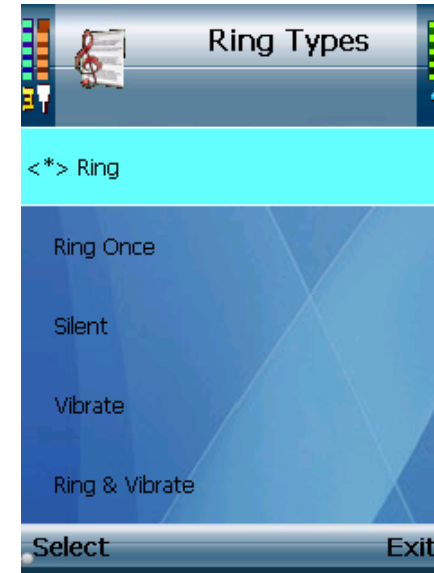
Ring Option

[Hint] Menu → Phone Settings → Ring Option → Ring Types / Ring Tones / Ring Volume

In Ring Option menu, you can set your personal like for Ring Types, Ring Tones, or Ring Volume.



- 1 In Ring Types, there are 5 choices for you -- **Ring**, **Ring once**, **Silent**, **Vibrate**, or **Ring&Vibrate**. Scroll to the type you desire, press **Select**, it will be saved and return to previous page.



- 2 In Ring Tones, there are 3 default choices for you, scroll to the desired ring tone and press **Select** to save.
- 3 In Ring Volume, you can set the volume with 5 levels choices. Scroll to the desired volume and press **Select** to save.

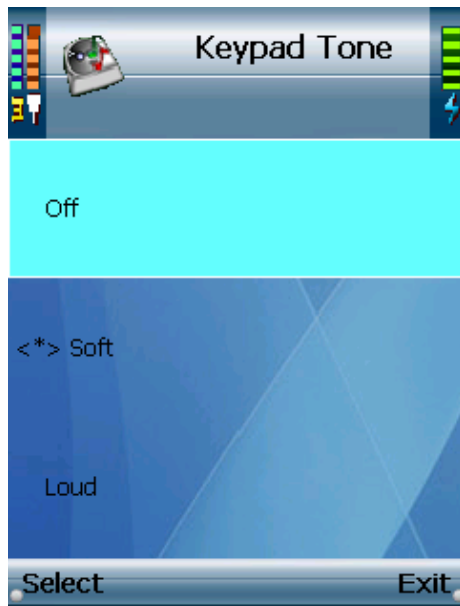
[Tip] You can use navigation pad to adjust the volume while IT TV, IP Radio performing, or during an online phone call.

Continued →→→

Keypad Tone

[Hint] Menu → Phone Settings → Keypad Tone

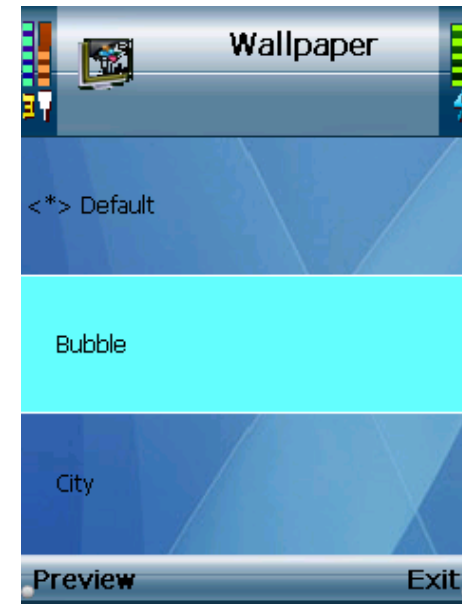
You can turn on or turn off the keypad tone in this layer – Off, Soft, or Loud. Press **Select** to save.



Wallpaper

[Hint] Menu → Phone Settings → Wallpaper

There are 7 default pictures inside the Wallpaper menu, scroll to your favorite picture and press **center key** to save it as wallpaper!



[Tip] Use left soft key to preview the picture or you can use WEB configuration to download your own file.

Continued →→→

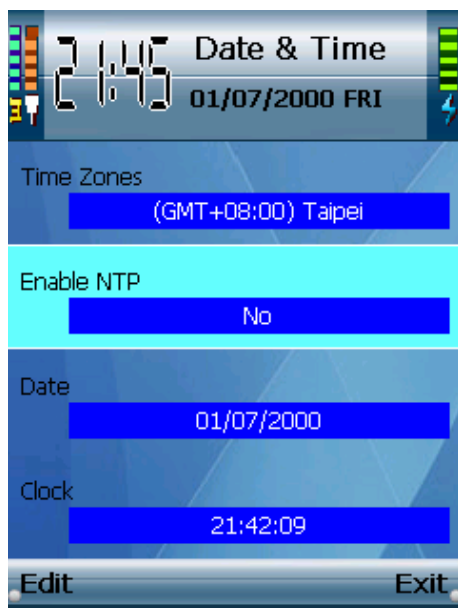
Date & Time

[Hint] Menu → Phone Settings → Date & Time

Within this settings menu, you can set the [Time Format](#), [Clock Type](#), [Time Zones](#), [NTP](#), and [Daylight Time](#)(if you enable NTP), or [Date](#) and [Clock](#) if you disable NTP.

[Note]

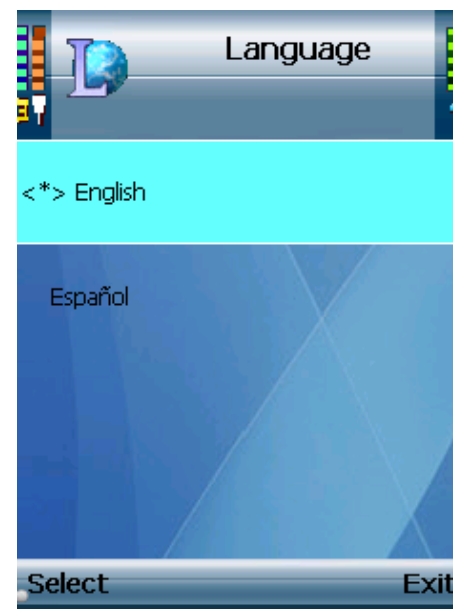
If you enable NTP – press **Edit** or **center key** and switch to Yes – the date and time will automatically update and last walking. Or you can disable NTP -- press **Edit** or **center key** and switch to No – and Edit the time manually.



Language

[Hint] Menu → Phone Settings → Language

There are 2 languages preset in this device for you – [English](#), [Español\(Spanish\)](#) currently. Choose one as your own default language!



[Note]

Please note that actual languages support may vary from different countries!

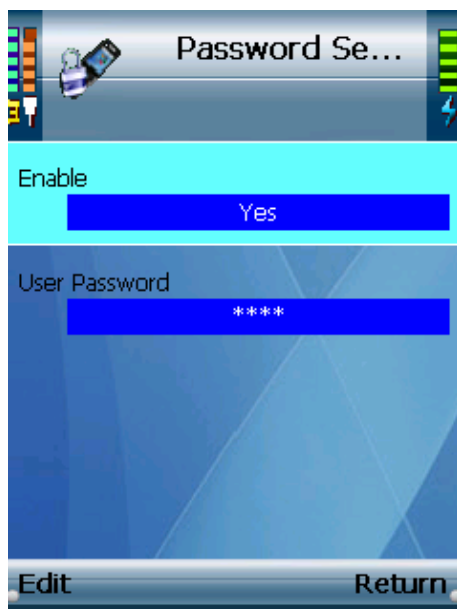
Continued →→→

WIGO800I Instructions

Phone Password

[Hint] Menu → Phone Settings → Phone Password

- 1 Press **Edit** to Enable or Disable Phone Password.
- 2 To set a phone password, please select **Edit** and then use **center key** to save it and then return.



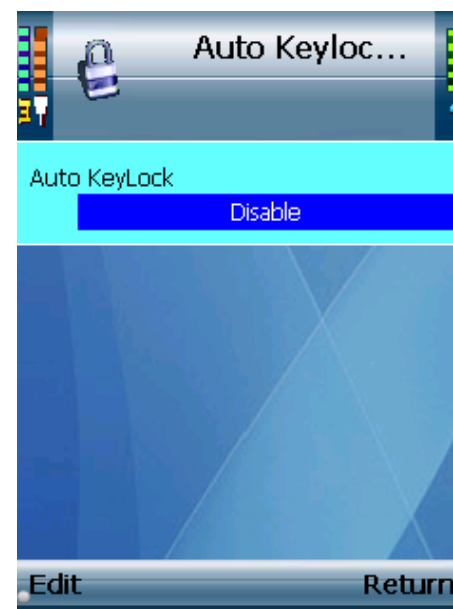
[Note]

Once you Enable Phone Password, the unit will ask you to enter the password at the phone every start-up. Default password is number "0000". If you forget your password, please contact your service provider.

Auto Keylock

[Hint] Menu → Phone Settings → Auto KeyLock Settings

- 1 Select **Edit** to Enable or Disable auto Keypad lock. When you have not acted for 1 minute the keypad will lock automatically if you enable this function.



- 2 To Unlock keypad, press **Unlock** and then press "*" key.

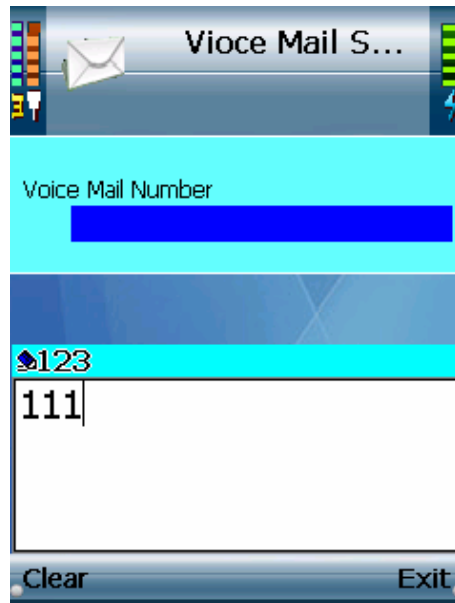
[Tip] Press "#" key for few seconds at stand-by screen, it is the direct key for keypad lock!

Continued →→→

Voice Mail

[Hint] Menu → Phone Settings → VoiceMail

To set your voice mail, press **Edit** to enter the voice mail number, then use **center key** to save and return.

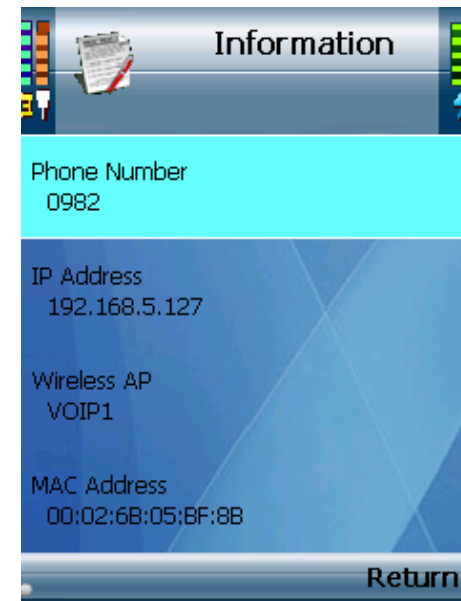


[Tip] To speed dial for voice mail, press the numeric key "1" and hold it for few seconds at standby screen. Please note that it workd only when you already set a voice mail box number in your device.

Information

[Hint] Menu → Phone Settings → Information

To check the information of your phone, you can enter Information menu. In this menu, it displays your **phone number**, **IP Address** (only shown when you connect on a network), **SSID** (the current connected Wireless AP), **MAC Address** and **Firmware Version**.

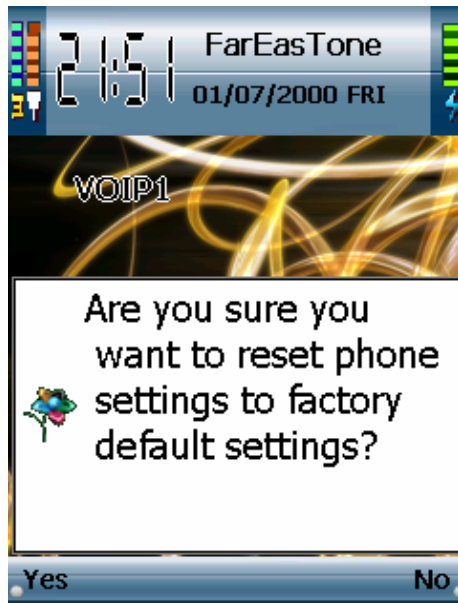


Continued →→→

Factory Default

[Hint] Menu → Phone Settings → Factory Default

Select Factory Default to reset your phone settings to factory default values. Your phone will reboot automatically when the progress completed.



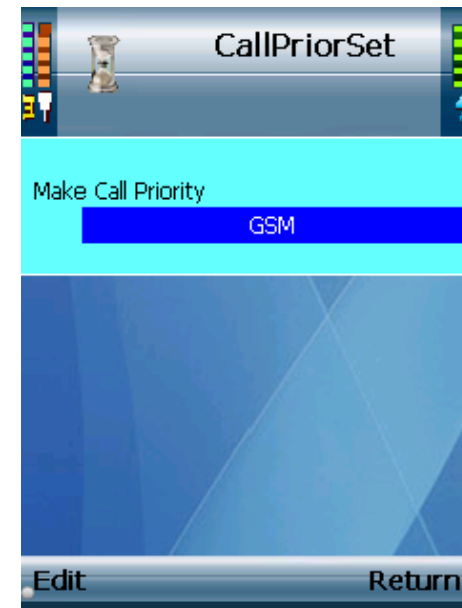
[Note]

Before you proceed Factory default, make sure you already [backup](#) your personal files which are already set in your phone. Or they will be deleted after factory default complete.

Call Settings

[Hint] Menu → Phone Settings → Call Settings

To set the priority of make-call types – GSM first, or SIP first – press **Edit** to select. It will be your first make-call type when you dial, or you can press center key to switch while dialing.



Continued →→→

BandSettings – For GSM frequency settings

[Hint] Menu → Phone Settings → BandSettings

There are quadri-band supported in this phone 850/900/1800/1900, and you have 6 options – [Monoband 850](#), [Monoband 900](#), [Monoband 1800](#), [Monoband 1900](#), [Dualband 850/1900](#), and [Dualband 900/1800](#) – for GSM frequency selection.

Press **Select** to choose one to meet the required frequency of where you locate.



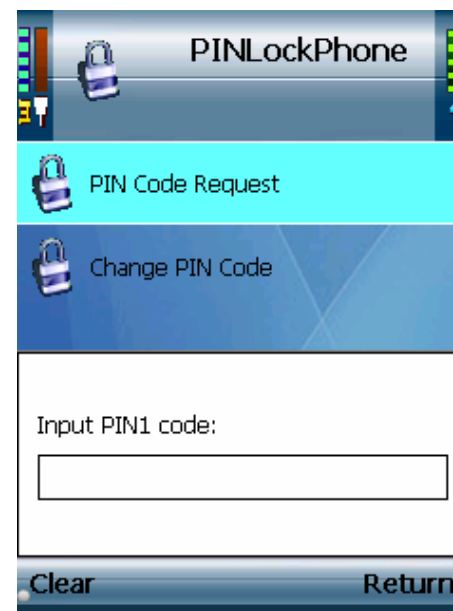
[Note]

Do not forget to change the band settings during your roaming period if the required GSM frequency is different from your original location. Or it may cause the GSM service invalid during this period of time.

Security Settings – For SIM Card PIN Code Settings

[Hint] Menu → Phone Settings → Security Settings

- 1 Press Select to enter the PIN1 Code Request of your SIM Card from GSM service provider, and press center key to confirm your input.

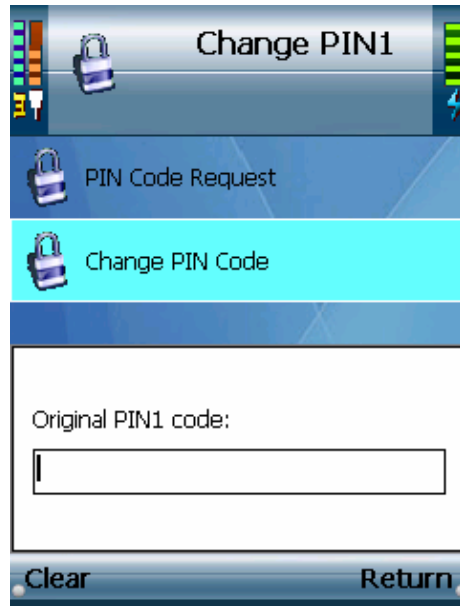


[Note]

Please be aware if you enter an incorrect PIN1 code for **3 times**, it may cause your SIM Card locked and invalid to use, please contact your GSM service provider to solve.

Continued →→→

2 To change PIN1 code, scroll to Change PIN Code and select to activate, enter the original PIN1 Code to access, and enter the new PIN1 Code you desire to set.



[Note]

Please be aware if you enter an incorrect PIN1 code for 3 times, it may cause your SIM Card locked and invalid to use, please contact your GSM service provider to solve.

For additional information or trouble shooting help about this product, Please visit BCM Website:

<http://www.bcmcom.com.tw>

Declaration of Conformity

Trade Name :

BCM

Model No. :

WIGO800I

Responsible Party :

BCM Communication Co., Ltd.

Visit:

<http://www.bcmcom.com.tw>

Address :

**5F-1, No. 2, Jian 8th Rd., Jhonghe City, Taipei County
235, TAIWAN**

Telephone No. :

886-(2)-82280218

E-mail support:

sales@bcmcom.com.tw

Authored By BCM Communication Co., Ltd. D.0205200704.02