

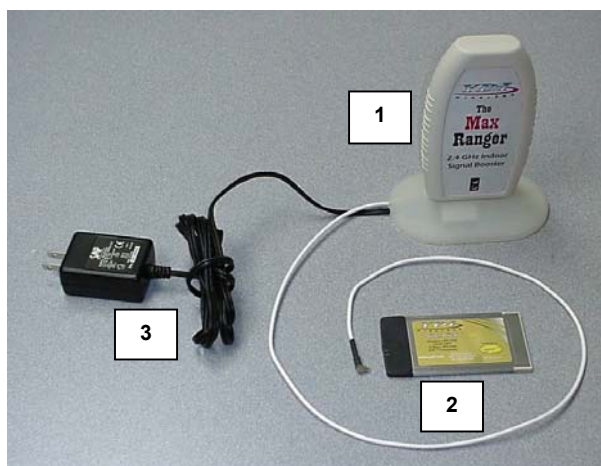
Introduction

The Max Ranger is an antenna with an integrated bi-directional amplifier used to extend the indoor range of 802.11b Wireless LAN cards. The Max Ranger is designed to be used with YDI/Agere PCMCIA WLAN cards that can be inserted into any suitable device such as an Access Point, YDI Ethernet Converter (EC), or even a laptop computer. It is easy to install and ready to work "right out of the box". The internal antenna is horizontally polarized for optimum RF connection to other WLAN cards which typically are also horizontally polarized. It features over 300 mW (+25 dBm) of transmit power (EIRP). It is FCC Part 15 Certified for license-free operation with our Sidekick and Sapphire WLAN cards, and is capable to work in a temperature range of 0°C to +50°C.

Max Ranger Kit Contents

1. Antenna with integrated bi-directional amplifier and RF cable terminated in antenna connector for the YDI/Agere WLAN card
2. YDI Sidekick Wireless LAN card
3. 110/220 VAC to 5 VDC wall mount power supply

Figure 1 – Max Ranger Kit

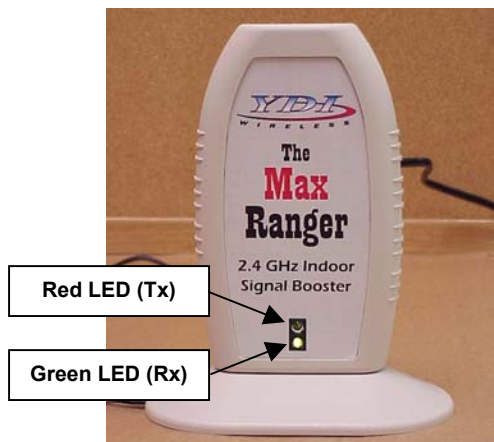


LEDs

Two LEDs are present on the front of the Max Ranger (see Figure 2):

- The Red LED flashes when the Max Ranger transmits data
- The Green LED indicates that the Max Ranger is in receive mode

Figure 2 – Max Ranger LEDs



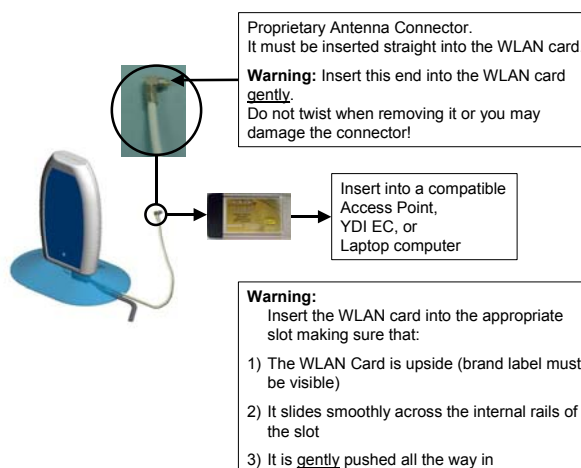
Installation

The Max Ranger radio unit can be placed near the computer or device on a tabletop.

1. Remove the small black plastic cap from the proprietary antenna jack of the WLAN card with your finger nail or a small screwdriver.
2. Plug the RF cable that is attached at the bottom of the Max Ranger to the proprietary antenna jack on the WLAN card as shown on figure 3.

CAUTION: The antenna connector is a tight push-on fit.

Figure 3 – Connecting the Max Ranger to the WLAN Card



3. Plug the DC power connector into the jack at the bottom of the Max Ranger as shown on Figure 4. Push the cable into the notch in the base to insure the Max Ranger is stable on the tabletop.
4. Plug the power supply into a standard wall outlet.

