

**Yealink Bluetooth® USB Dongle BT40**  
**User's manual**



# Content

|  |    |
|--|----|
| ■ Brief introduction.....                      | 1  |
| 1. About BT40.....                             | 1  |
| 2. System requirements.....                    | 1  |
| ■ Getting started.....                         | 2  |
| 1. Installation.....                           | 2  |
| 2. System setting.....                         | 2  |
| 3. Pairing Dongle with Bluetooth receiver..... | 3  |
| 4. Music mode and remote control.....          | 7  |
| 5. Make VOIP call.....                         | 8  |
| 6. LED indicator.....                          | 10 |
| ■ Care and maintenance.....                    | 10 |
| ■ FAQs.....                                    | 11 |
| ■ Specification.....                           | 12 |

Welcome to use this Plug & Play Bluetooth USB Dongle BT40. Please read this user manual carefully before use.

## ■ Brief introduction

### 1. About BT40

BT40 is a Plug & Play Bluetooth USB Dongle, it supports HSP, HFP, A2DP and AVRCP profiles. It has the following features:

- 1) You can use VoIP software like Skype comfortably after pairing with a Bluetooth headset (or Bluetooth hands-free device) supporting HSP profile.
- 2) Pairing with a Bluetooth stereo headset (or Bluetooth speaker) supporting A2DP profile enables you to listen to your music wirelessly. If your Bluetooth stereo headset supports AVRCP profiles you can remote control your PC's media player.
- 3) Switch easily between music and VoIP calls.

**Note:** Even though the paired Bluetooth device and the Dongle support the same Bluetooth profiles, the functions may be different due to specification differences.

### 2. System requirements

- ◆ Operating system: Compliant with Windows 2000 /2003 /XP /Vista/7
- ◆ Compliant with USB 2.0
- ◆ Software demand: you should install the Bluetooth software "BlueSoleil" on your PC

### Remarks:

- ◆ To complete the above functions, the paired devices should support the same Bluetooth profile with this product.
- ◆ Even though the paired Bluetooth device and the Dongle support the same Bluetooth profiles, the functions may be different due to specification differences.

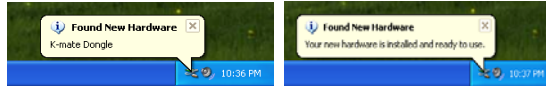
## ■ Getting started

### 1. Installation

1) Before use this product, you should install a software “BlueSoleil” on PC. Put the CD which provided by this product into the driver of PC, the PC will install the procedures automatically, also you can install manually. After installing successfully, there will be a Bluetooth Logo on PC taskbar.



2) When you first use BT40, please turn off or forbid the antivirus software. After plugging the Dongle into PC, the operating system will show “Find New Hardware” and install the devices automatically. The whole process will need a few second and if you plugging the Dongle into PC next time, it needn't install again.



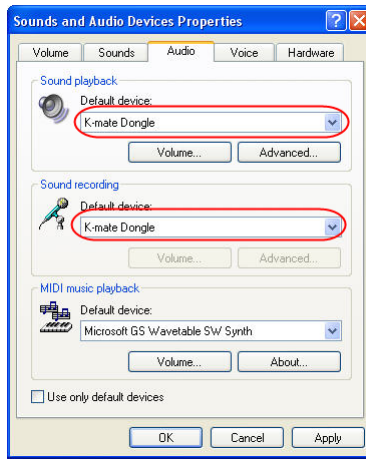
### 2.System setting

Before using Dongle, you should set it as default device in Windows Audio Device System.(Control desk→Sound and Audio Devices Properties)

#### Note:

Depending on the actual operating system, the device name maybe is named as “K-mate Dongle”, “USB Audio Device” or “USB Composite Device”.

Following is Windows XP set up method:



### 3. Pairing Dongle with Bluetooth receiver

Before using Dongle to listen wireless music or make VOLP call, you should paring Dongle with Bluetooth headset (or other Bluetooth receiver). Hereby take a Bluetongue headset BTH002 (not included in accessory)for example:

- 1) Inserting BT40 into PC, then operating system will show “ Find New Hardware” and install the devices automatically.
- 2) Open BlueSoleil and make BTH002 into pairing mode.



- 3) Right-button click the central of spherical symbol to search equipment, the device will be searched and displayed in around.



4) Choosing BTH002 in search device list, you can see all the Bluetooth services that BTH002 support.



5) Right-button click BTH002 to pairing, enter "0000" when the software indicate enter PIN number and click confirm.



6) After confirm, paired with BTH002 successfully.



7) Right-button clicks BTH002 and chooses Bluetooth service which you want to connect.





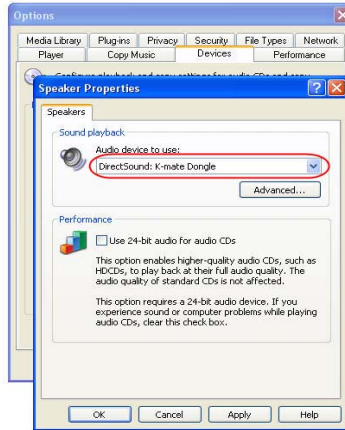
**Note:**

- ◆ Dongle can pairing with Bluetooth Audio receiver which PIN number is “0000”, “1234”, “8888” or “1111”.
- ◆ Dongle can connect max four devices at the same time.

**4. Music mode and remote control**

**1) Listening to stereo music**

- ◆ If you want to listen to stereo music, the pairing device must be support A2DP agreement.
- ◆ Before playing music, besides the above system setting, you may also set Dongle as audio output devices of player. Please check the specific setting method with the use’s help of player.
- ◆ Take Windows Media Player as example, click “tool→option→device→speaker”, and set Dongle as voice playback device in attribute.



## **2) Headsets remote control**

Using Dongle, you can remote control the media player so that you can choose previous song, next song, pause or play. Remote control needed to achieve the following conditions:

- ◆ Pairing headsets should support A2DP or AVRCP agreement.
- ◆ Depending on your media player, Dongle support remote control media player included Windows Media player, Real player, iTunes and so on, but it can not support Winamp media player remote control. Besides, when some media player (Real player, iTunes and so on) is playing in background, you can not remote control it.

## **3) Pairing with HFP device**

You can listen to music through the receiver in following two conditions, but the tone quality is bad and you can not remote control the media player.

- ◆ Pairing device only support HFP agreement
- ◆ Although pairing device support HFP and A2DP etc. agreement, but it enter the conversation mode in currently so that it activate the HFP service.

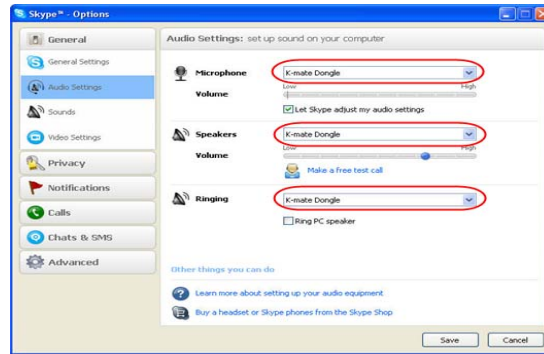
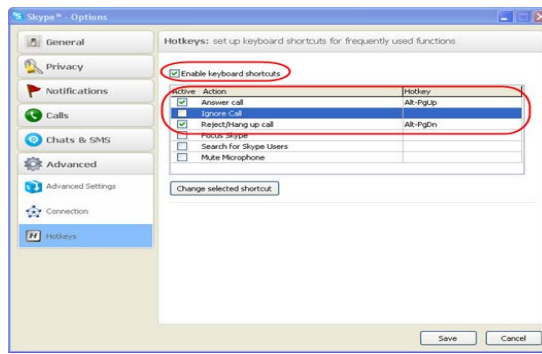
## **5. Make VOIP call**

Dongle support VOIP service following common internet communication software: MSN, Skype, Google Talk, Yahoo Talk. Following take Skype as example.

### **1) Skype installation**

Before you use Dongle to make a hands-free call with Skype, you should install Skype as following steps:

- ◆ Click "Option→General→Audio Setting", install Microphone, Speaker and Ringing as Dongle.
- ◆ Click "Option→Advanced→Hotkeys", install hotkey of "Answer call" and "Reject/Hang up call" as "Alt - PgUp" and "Alt - PgDn". Then choose these two option and open hotkey. After confirm, please save the installation.



## 2) Make call with Skype

| Type                  | Function    | The status of headsets | Operation  |
|-----------------------|-------------|------------------------|--|
| Operation of headsets | Answer call | Ringling               | Use the function of last number dialing on the headsets to answer the call |
|                       | Reject call | Ringling               | Use reject function on the headsets to reject the call                     |
|                       | End call    | Conversation           | Press the end button on the headsets                                       |
| Operation of Skype    | Answer call | Ringling               | Click answer button on the Skype   |
|                       | Reject call | Ringling               | Click reject button on the Skype   |
|                       | End call    | Conversation           | Click end button on the Skype  |

## 6. LED indicator

| Status of dongle    | LED indicator                        |
|---------------------|--------------------------------------|
| Standby mode        | Red LED flash once every 1.2 seconds |
| Connect with device | Red LED on and the edge will flash   |

### ■ Care and maintenance

Please read the following suggestion carefully, it will help you to fulfill any warranty obligation and enjoy this product for many years.

- ◆ Keep dry and don't put it in the wet place, in case of affecting the interior circuit of product.
- ◆ Don't put the product under the sunlight or place in hot areas. High temperature will shorten the life of electronic device and distort certain plastic.
- ◆ Don't expose the product to extreme temperatures, which may damage the internal circuit board.
- ◆ Don't try to take apart the product. It may damage the product if you are not professional.

- ◆ Don't fall off on the floor, or knock the hard substance, it may damage interior circuit.
- ◆ Don't use intensify chemical or detergent to clean the product.
- ◆ Don't scrap the surface with sharp things.
- ◆ Don't use this product during strenuous sport cause it is not water-resistant.

If the product can't work normally, please send it to the regularly asserted store, the staff will help you to solve problem warmly.

#### ■ FAQs

1 Q: Why can not turn on the Dongle?

- A: a) Please avoid using the USB extension cable.  
b) Please make sure your USB port supports USB1.1,2.0(or more than USB1.1)

2 Q: Why the Dongle can not drive automatically?

- A: Please turn off or disable your antivirus software.

3 Q: Why the receiver can not play music?

- A: a) Make sure the system default audio output device has already set to Dongle (refer to "system setting");  
b) Make sure the default audio output device of media player is Dongle;  
c) Make sure the player is not in mute;  
d) Make sure the volume of player has already adjusted to suitable position.  
e) Make sure the volume of receiver has already adjusted to suitable position.

4 Q: Why the receiver can't remote control the player?

- A: a) Make sure your Bluetooth receiver supports AVRCP profile;  
b) Make sure the device is in music mode not in conversation mode;  
c) Make sure your player is compatible with this product and the version of player is the updated;  
d) Make sure media player is not playing music in background

5 Q: Why can listen to low quality music from receiver but can not switch to music mode?

- A: a) Make sure the VoIP calls has already ended;  
b) Windows may work unusual, please try to log-out system.

■ **Specification**

|                            |                     |
|----------------------------|---------------------|
| <b>Bluetooth version</b>   | Bluetooth V4.0      |
| <b>Bluetooth agreement</b> | HSP,HFP,A2DP, AVRCP |
| <b>Frequency range</b>     | 2.402GHZ-2.480GHZ   |
| <b>Distance</b>            | 10m                 |
| <b>Dimensions</b>          | 18*14*5.5mm         |
| <b>Weight</b>              | 2g                  |

■ **FCC Statement**

This device complies with Part 15 of the FCC Rules. Operation is subject to the following two conditions: (1) This device may not cause harmful interference, and (2) this device must accept any interference received, including interference that may cause undesired operation. Any Changes or modifications not expressly approved by party responsible for compliance could void the user's authority to operate the equipment.

■ **Radiation Exposure Statement**

This equipment complies with FCC radiation exposure limits set forth for an uncontrolled environment.  
This transmitter must not be co-located or operating in conjunction with any other antenna or transmitter.