



# Gigabit Color IP Phone

SIP-T29G



## Quick Start Guide (V80.1)

[www.yealink.com](http://www.yealink.com)

Applies to firmware version 46.80.0.1 or later.

## Declaration of Conformity



Hereby, Yealink Network Technology CO.,LTD. declares that this phone is in conformity with the essential requirements and other relevant provisions of the CE, FCC.

### CE Mark Warning

This device is marked with the CE mark compliance with EC Directives 2006/95/EC and 2004/108/EC.

### Part 15 FCC Rules

**Any Changes or modifications not expressly approved by the party responsible for compliance could void the user's authority to operate the equipment.**

This device is compliant with Part 15 of the FCC Rules. Operation is subject to the following two conditions:

1. This device may not cause harmful interference.
2. This device must accept any interference received, including interference that may cause undesired operation.

### Class B Digital Device or Peripheral

Note: This equipment has been tested and found to comply with the limits for a Class B digital device, pursuant to part 15 of the FCC Rules. These limits are designed to provide reasonable protection against harmful interference in a residential installation. This equipment generates, uses and can radiate radio frequency energy and, if not installed and used in accordance with the instructions, may cause harmful interference to radio communications. However, there is no guarantee that interference will not occur in a particular installation. If this equipment does cause harmful interference to radio or television reception, which can be determined by turning the equipment off and on, the user is encouraged to try to correct the interference by one or more of the following measures:

1. Reorient or relocate the receiving antenna.
2. Increase the separation between the equipment and receiver.
3. Connect the equipment into an outlet on a circuit different from that to which the receiver is connected.
4. Consult the dealer or an experienced radio/TV technician for help.

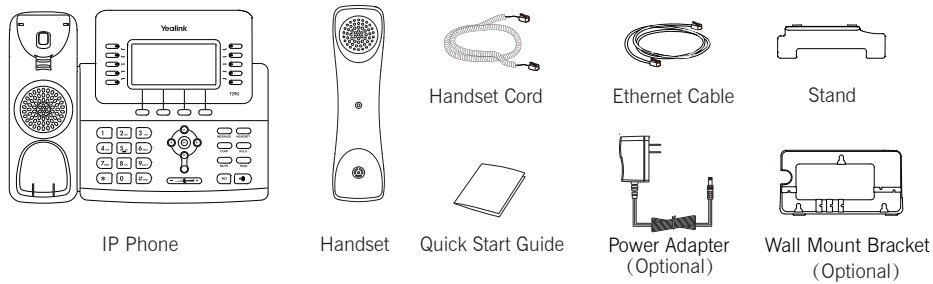
### WEEE Warning



To avoid the potential effects on the environment and human health as a result of the presence of hazardous substances in electrical and electronic equipment, end users of electrical and electronic equipment should understand the meaning of the crossed-out wheeled bin symbol. Do not dispose of WEEE as unsorted municipal waste and have to collect such WEEE separately.

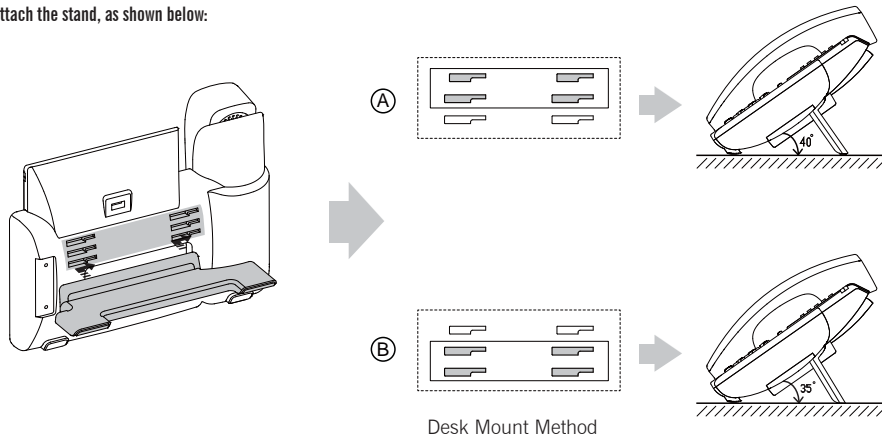
## Packaging Contents

The following items are included in your package. If you find anything missing, contact your system administrator.



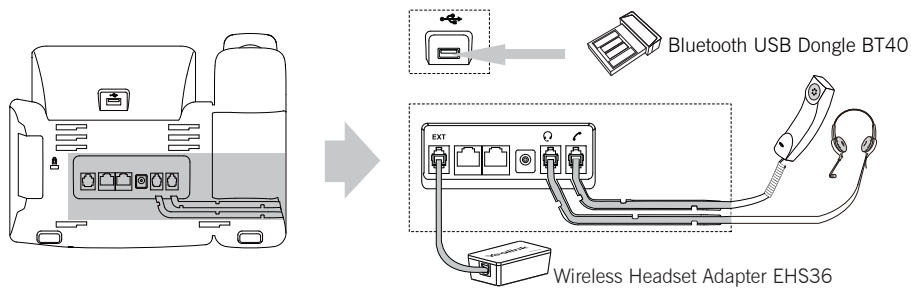
## Assembling the Phone

1. Attach the stand, as shown below:



Note: You can also mount the phone to a wall. For more information on how to attach the wall mount bracket, refer to Yealink Wall Mount Quick Installation Guide for Yealink IP Phones.

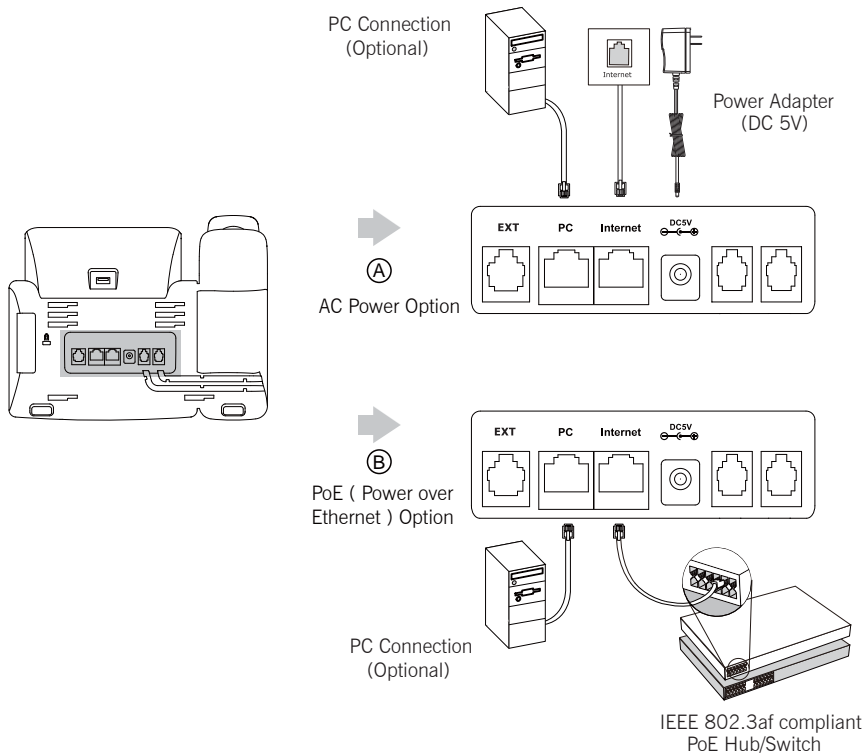
2. Connect the handset and optional headset, as shown below:



Note: The headset, Bluetooth USB dongle BT40 and wireless headset adapter EHS36 should be purchased separately. The EXT port can also be used to connect the expansion module EXP38 or EXP39. For more information on how to use the EHS36, EXP38, EXP39 and BT40, refer to Yealink EHS36 User Guide, Yealink EXP38 and EXP39 User Guide and Yealink Bluetooth USB Dongle BT40 User Guide.

### 3. Connect the network and power, as shown below:

You have two options for network and power connections. Your system administrator will advise you on which one to use.



**Note:** If inline power (PoE) is provided, you don't need to connect the power adapter. Make sure the hub/switch is PoE-compliant.

## Startup

After the IP phone is connected to the network and supplied with power, it automatically begins the initialization process. After startup, the phone is ready for use. You can configure the phone via phone user interface or web user interface.

