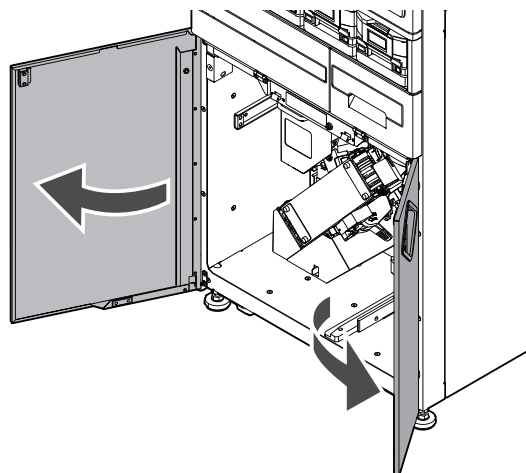


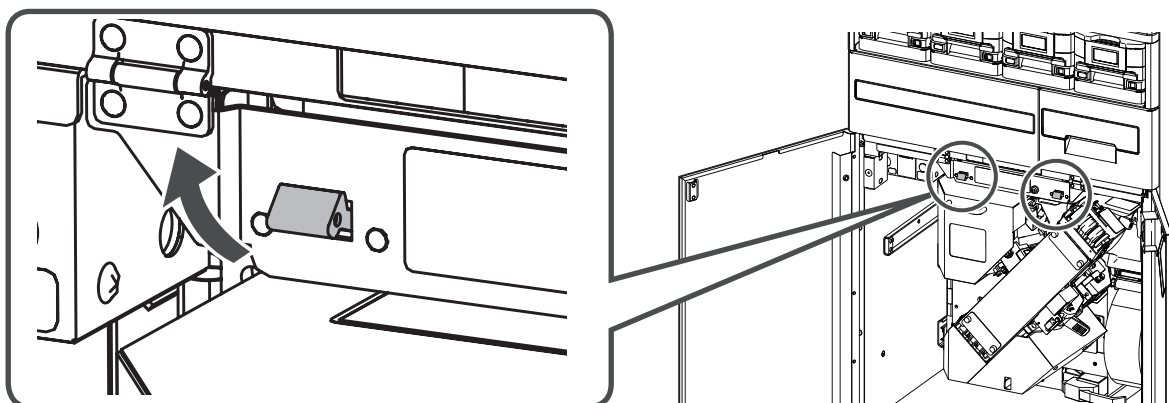
1 Open the lower doors.

Open the left door first and then open the right door.

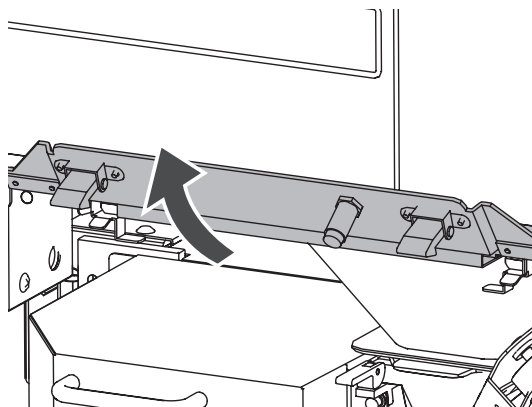


2 Remove the large hopper.

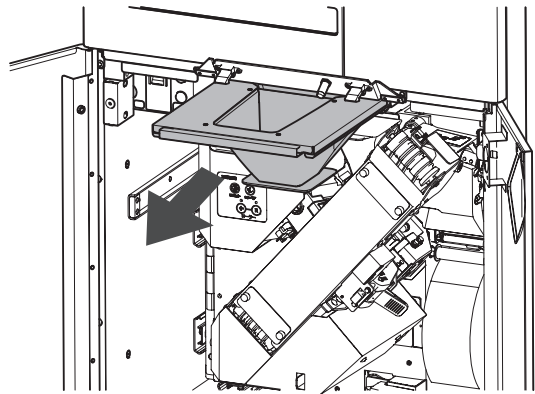
Release the black latches on each side under the DTA unit.



Raise the front cover while releasing the black latches.

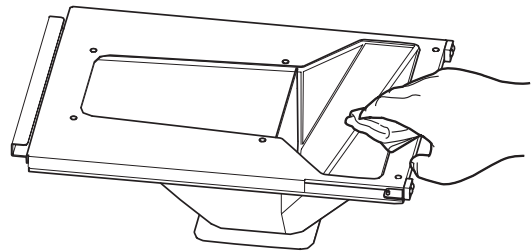


Pull out the large hopper to remove it while raising the front cover.



3 Clean the large hopper.

Wipe with a soft damp cloth that has been wrung out thoroughly.
After that, dry with a soft cloth.

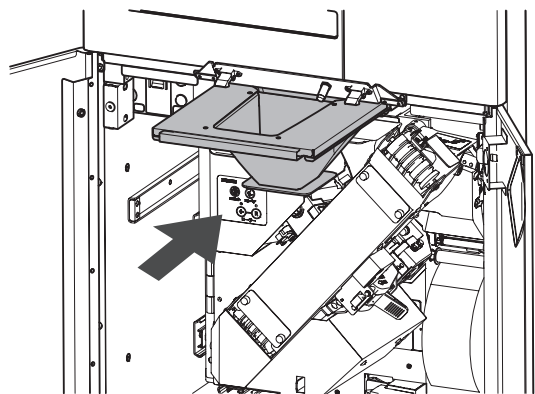


CAUTION

Do not use a cleanser or wax for cleaning.
Doing so may cause a deterioration or damage to the surface.
Do not touch the cushion sheet during cleaning.
If the cushion sheet is torn or removed, tablets may be dispensed incorrectly.

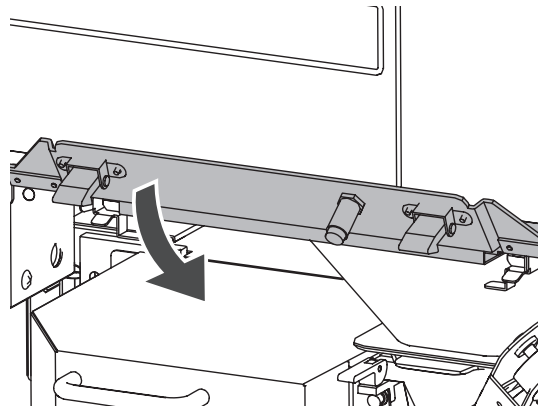
4 Return the large hopper to its original position.

Be careful to attach the large hopper in the correct direction.



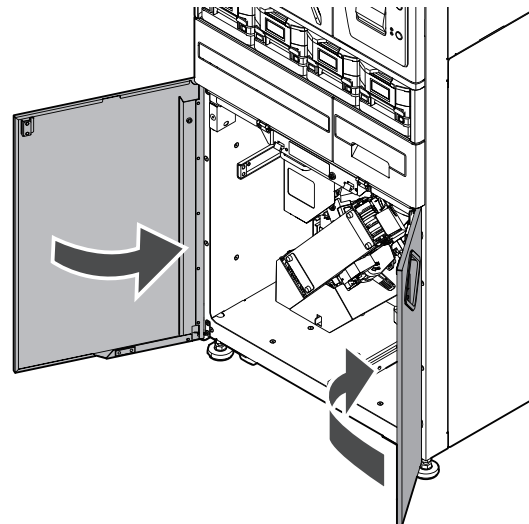
➔ *Large Hopper (Continued)*

Lower the front cover to return it to its original position.
Also, set the latches in place.



5 Close the lower doors.

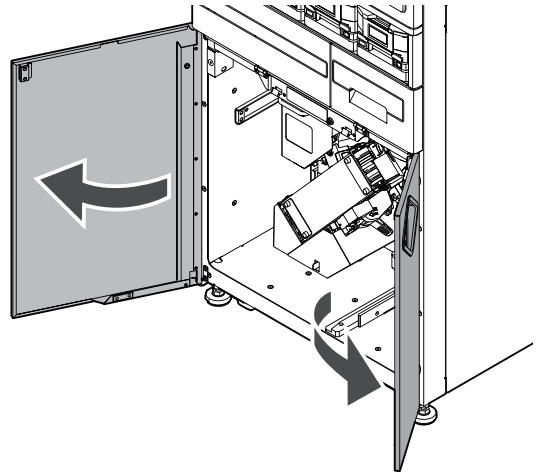
Close the right door first and then close the left door.



Print Head

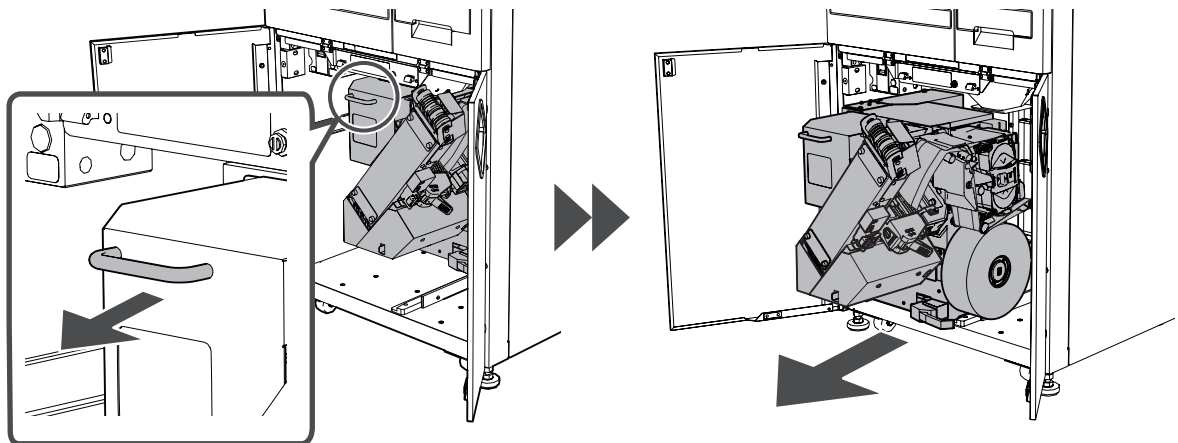
1 Open the lower doors.

Open the left door first and then open the right door.



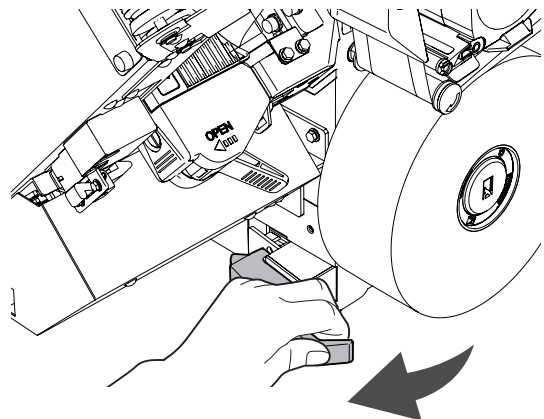
2 Pull out the packaging unit.

Hold the handle on the packaging unit and then pull it out.



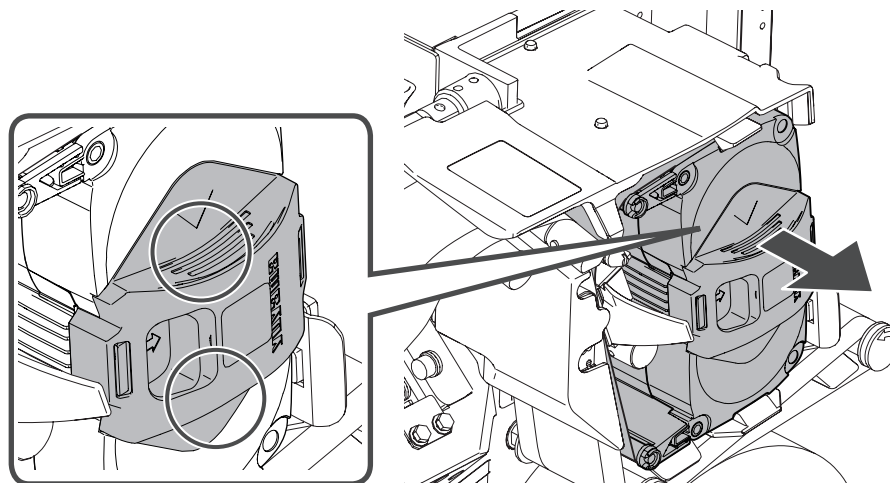
3 Open the packaging unit.

Pull the lever on the packaging unit.
After unlocking the packaging unit, pull it out.



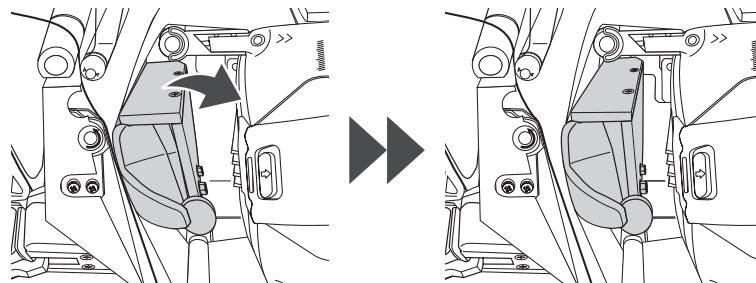
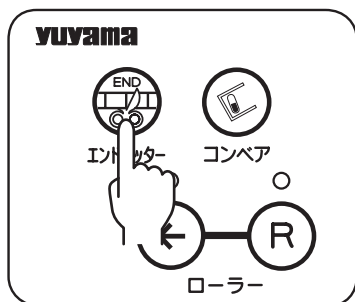
4 Remove the ink ribbon cartridge.

Hold two grooves on the cartridge case and take it out.



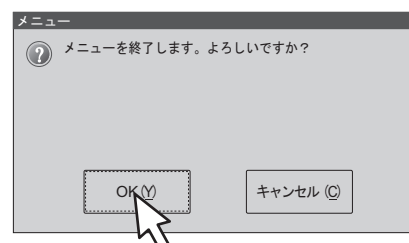
Tips

When the packaging unit is pulled out while dispensing (printing) is suspended, the print head is closed.
When opening the print head, press the heat roller normal rotation button.

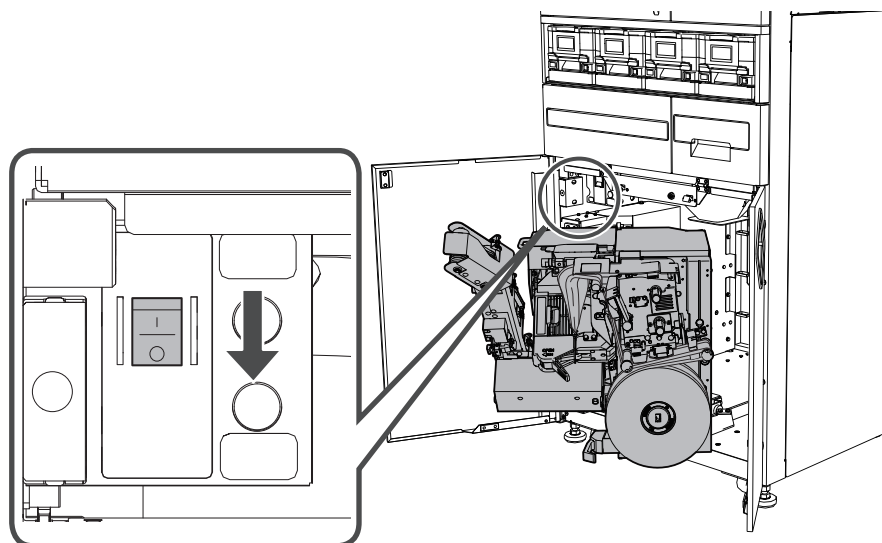


5 End the tablet packaging system.

Click [JSD.NET] and then click [End].
When the confirmation message appears, click [OK].
Check that the packaging machine is turned off.

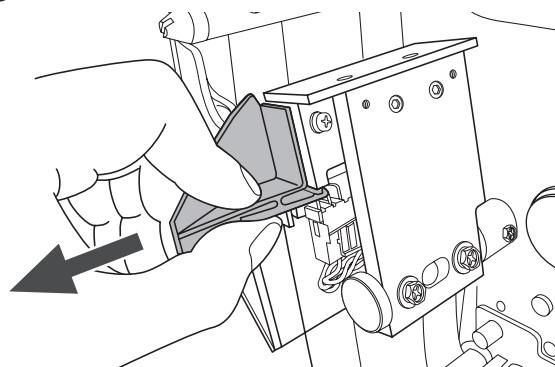
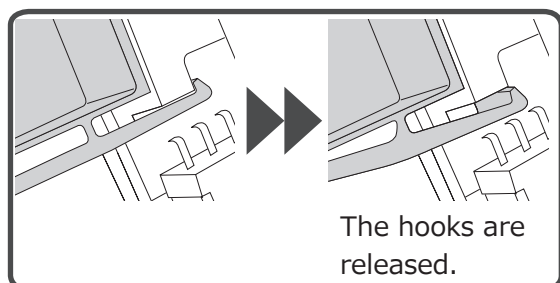


6 Turn off the breaker.



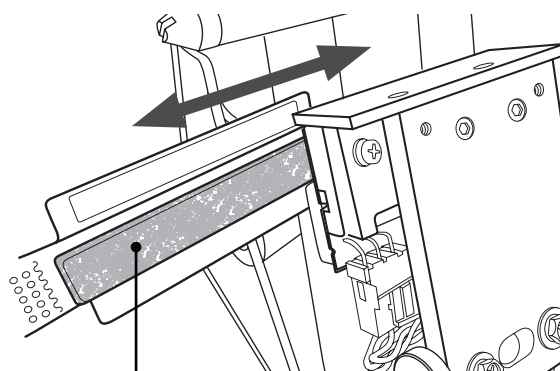
7 Remove the ribbon guide.

Push the tabs on the ribbon guide to release the hooks, then remove the ribbon guide.



8 Clean the print head.

Wipe the surface of the print head with the provided print head cleaner soaked in alcohol.



Print head cleaner

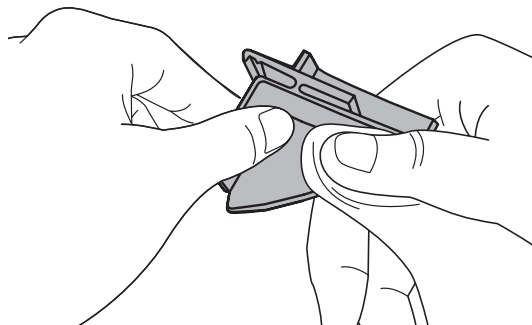


CAUTION

Be sure to turn off the packaging machine when cleaning with alcohol. Doing so may cause electric shock.

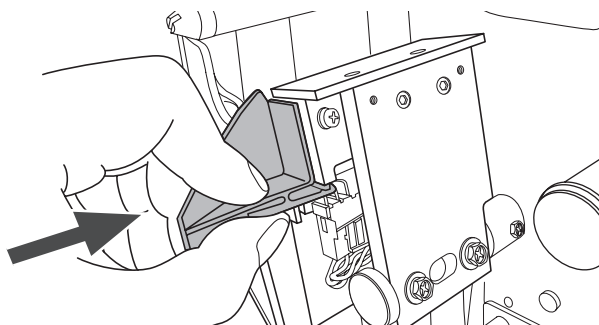
9 Clean the ribbon guide.

Wipe with a soft damp cloth.



10 Attach the ribbon guide.

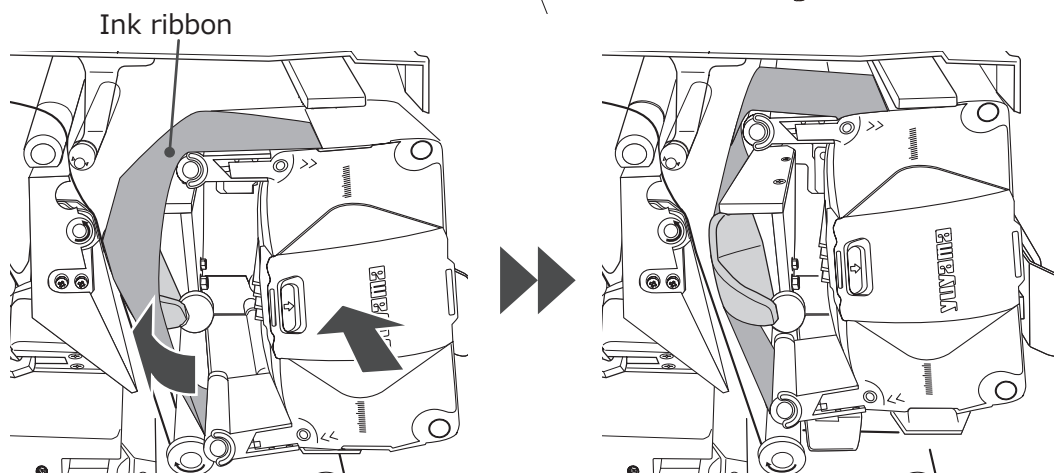
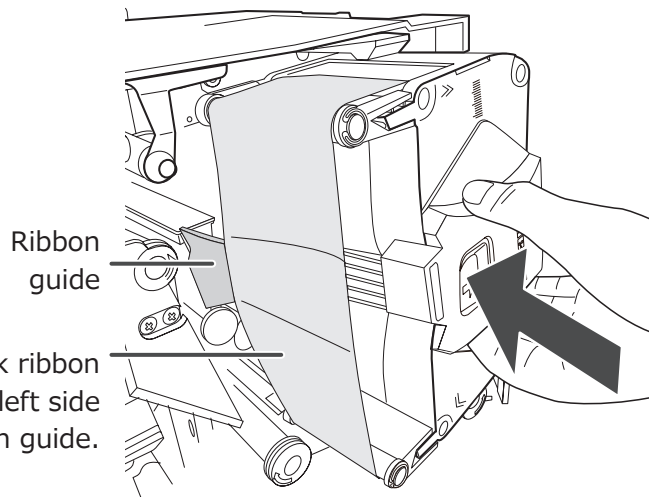
Push the tabs on the ribbon guide and insert the ribbon guide straight into the insertion hole.



11 Attach the ribbon guide.

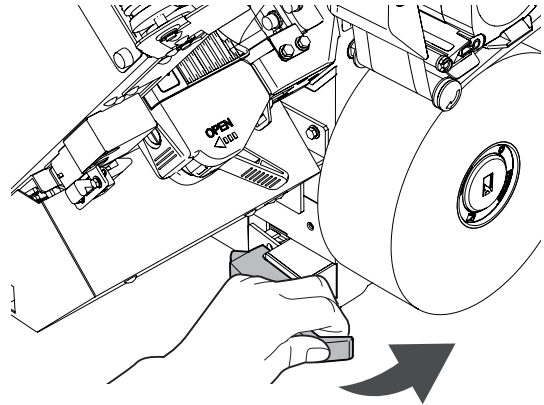
Attach the cartridge case so that the ink ribbon passes through the left side of the ribbon guide.

After that, check if the cartridge case is securely fixed.

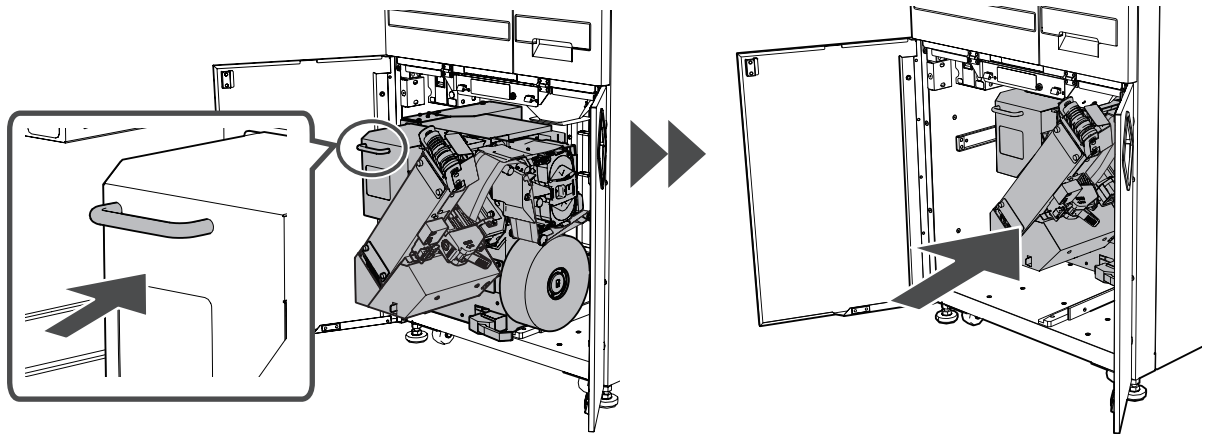


12 Return the packaging unit to its original position.

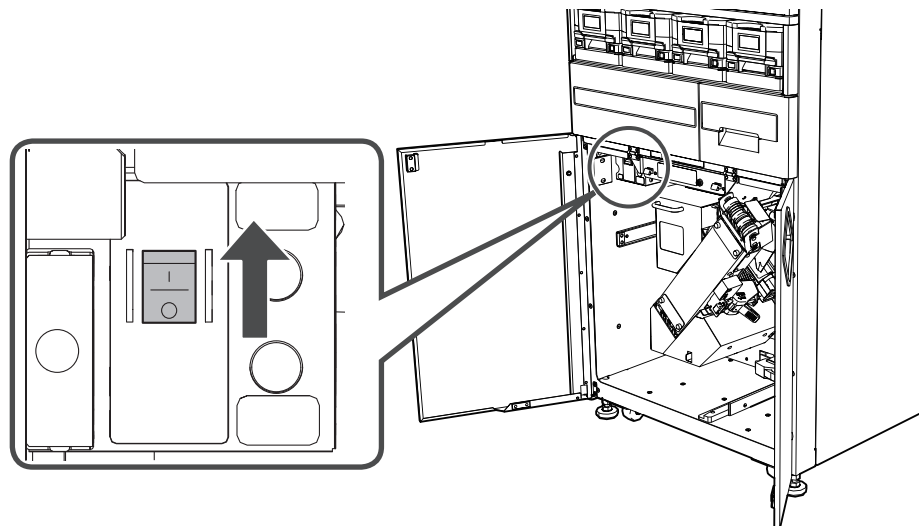
Hold the lever on the packaging unit and push the packaging unit.
Push it all the way in until it clicks.



Hold the handle on the packaging unit and return the packaging unit to its original position.
Push it all the way in until it clicks.

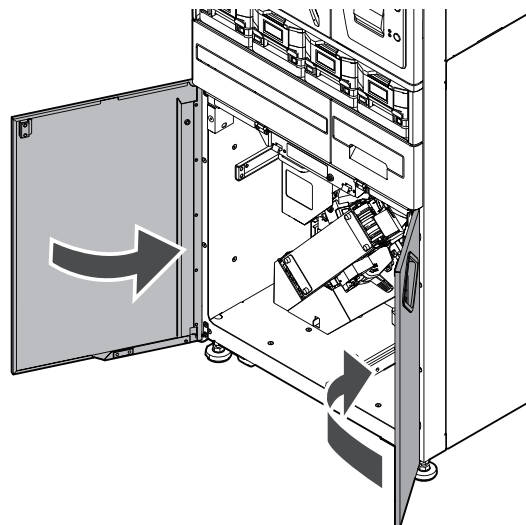


13 Turn on the breaker.



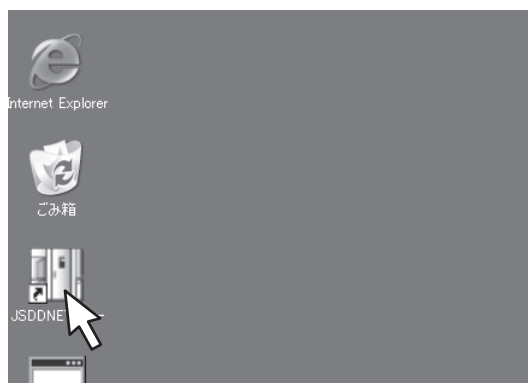
14 Close the lower doors.

Close the right door first and then close the left door.



15 Start up the system.

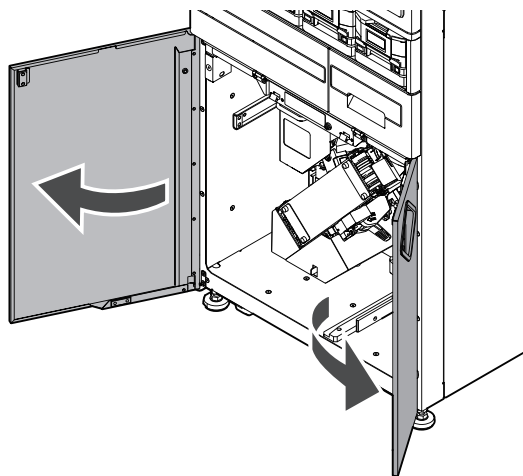
Double-click the "JSD.NET" icon on the desktop to start up the system.



Last Hopper

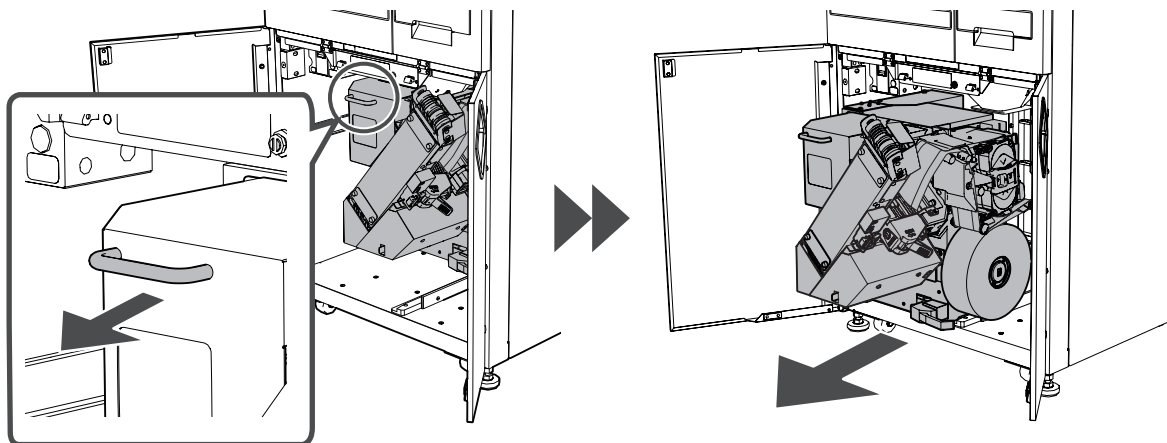
1 Open the lower doors.

Open the left door first and then open the right door.



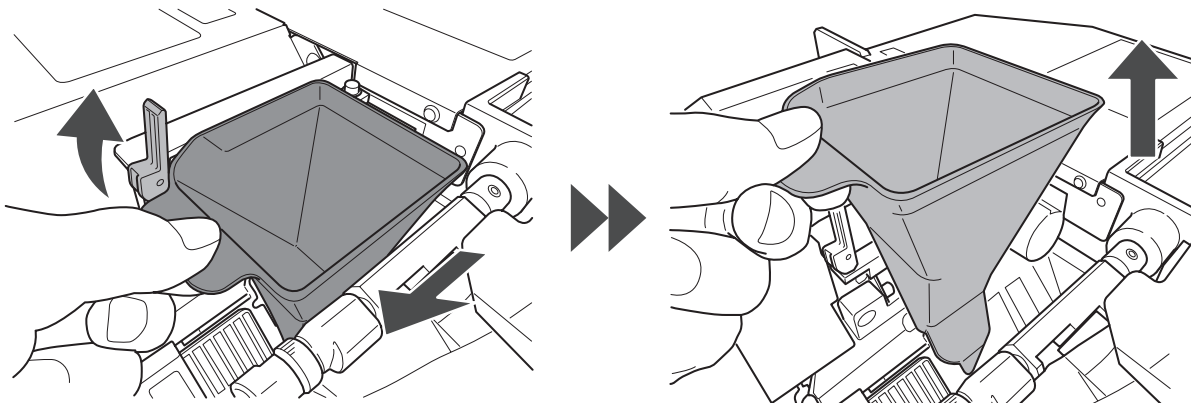
2 Pull out the packaging unit.

Hold the handle on the packaging unit and then pull it out.



3 Remove the last hopper.

Unlock the fixing lever and pull out the hopper, then lift the hopper.

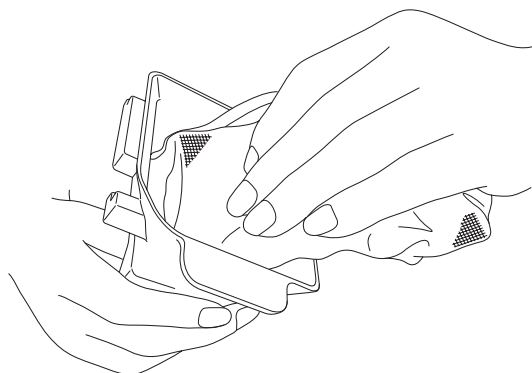


4 Clean the last hopper.

Wipe with a soft damp cloth that has been wrung out thoroughly.
After that, dry the surface with a soft cloth.

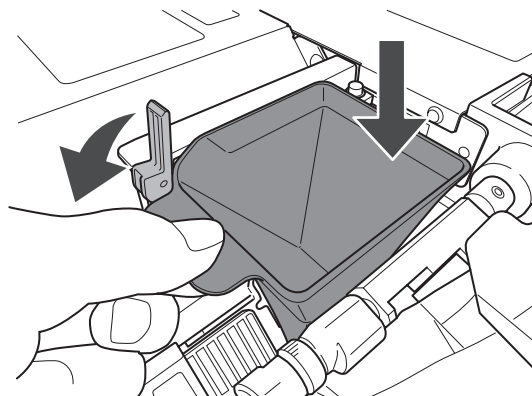
CAUTION

Do not use a cleanser or wax for cleaning. Doing so may cause a deterioration or damage to the surface.



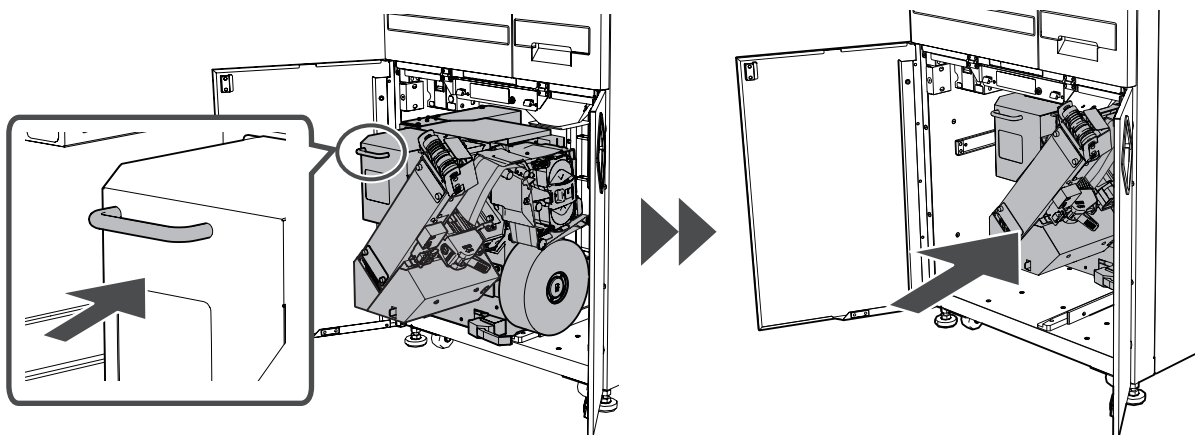
5 Return the last hopper to its original position.

Attach the last hopper and then set the fixing lever in the position.



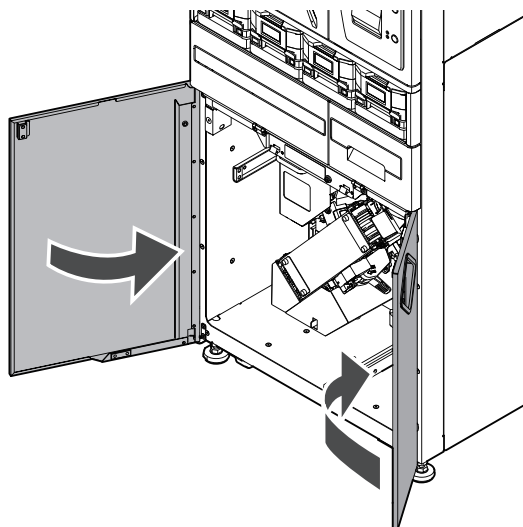
6 Set the packaging unit in place.

Hold the handle on the packaging unit and return the packaging unit to its original position. Push it all the way in until it clicks.
When the packaging unit is set in place, the beep sound is played.



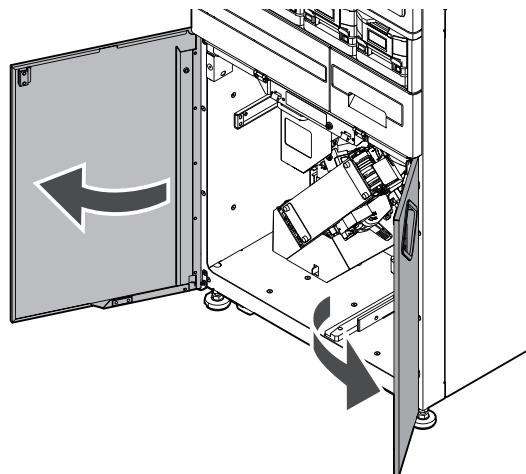
7 Close the lower doors.

Close the right door first and then close the left door.



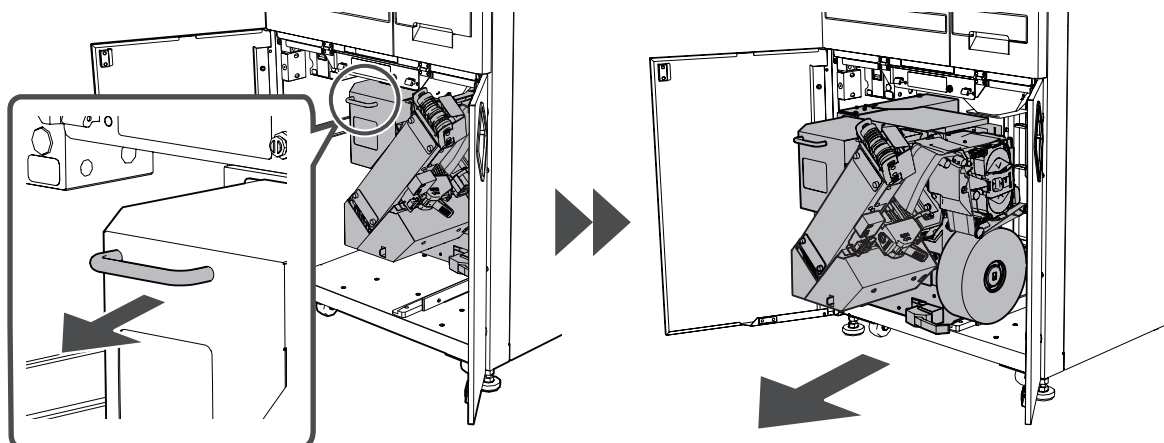
1 Open the lower doors.

Open the left door first and then open the right door.



2 Pull out the packaging unit.

Hold the handle on the packaging unit and then pull it out.



3 Open the packaging unit.

Pull the lever on the packaging unit.
After unlocking the packaging unit, pull it out.



CAUTION

When opening the packaging unit, be careful not to hit against something that could damage the packaging unit.

