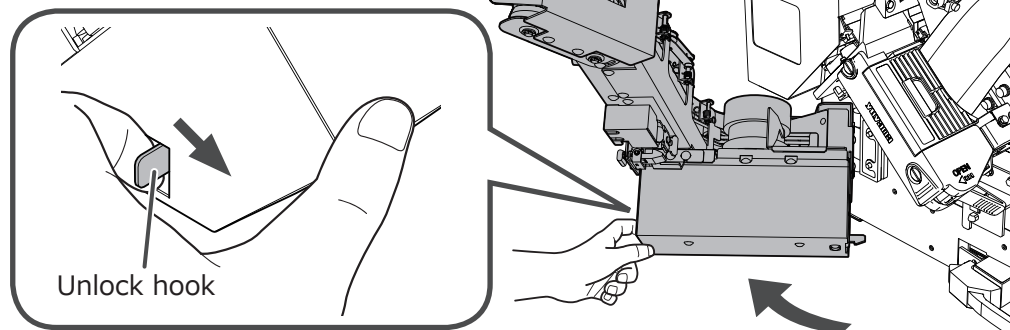


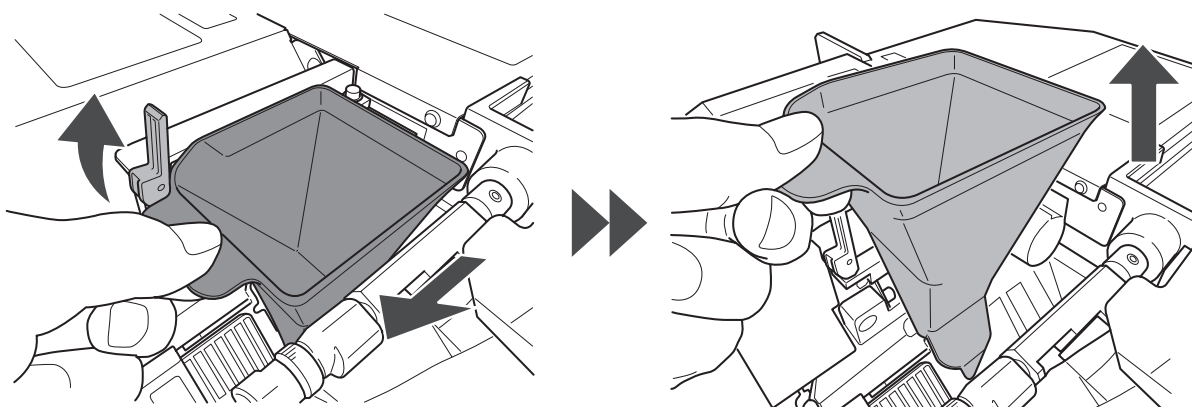
4 Open the conveyor.

Hold the unlock hook on the conveyor unit and open the conveyor to the left side.



5 Remove the last hopper.

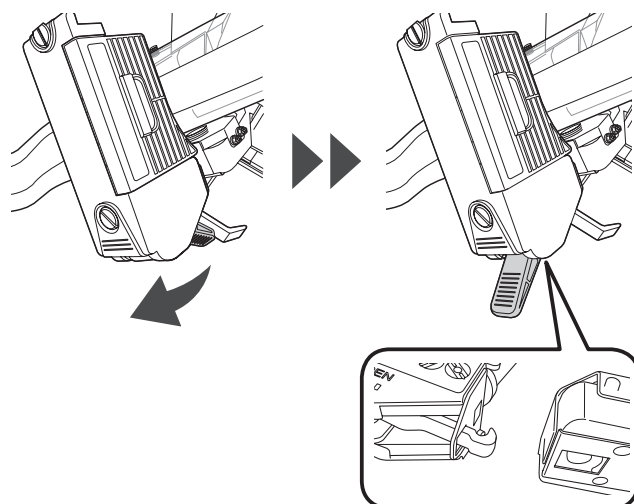
Unlock the fixing lever and pull out the hopper, then lift the hopper.



6 Open the heat roller.

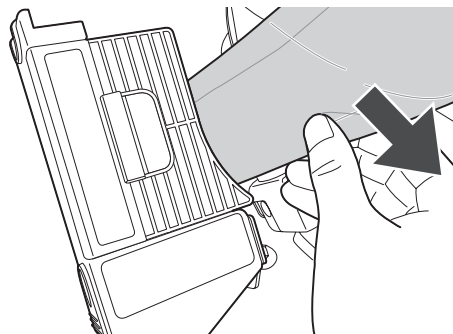
Pull the heat roller lever to the "OPEN" position.

The hook is released when the lever is pulled and then the heat roller opens.

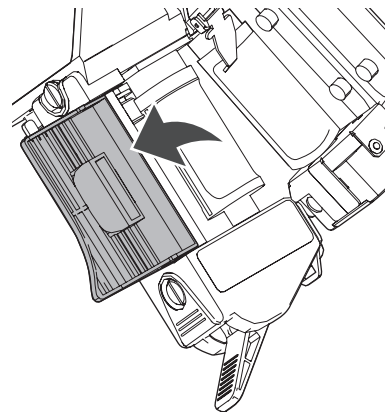


➔ Heat Roller (Continued)

Remove the remaining packaging paper from the heat roller.



7 Open the heat roller cover.

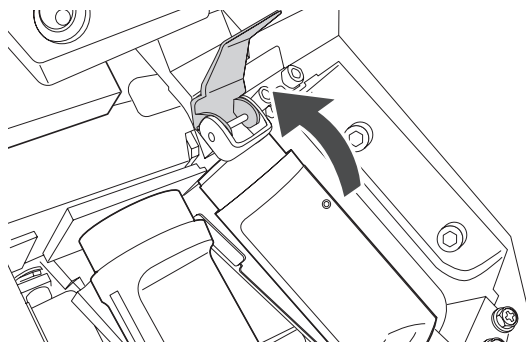


8 Raise the paper retainer.



WARNING

The heat roller and its surrounding area are extremely hot while the heat roller is heated and right after the power is turned off. Thus there is a risk to get burned. Never touch the heat roller directly.



9 Clean the heat roller.

Apply the wax to the provided brush.
Then brush the glue of the packaging paper
off the surface of the heat roller.

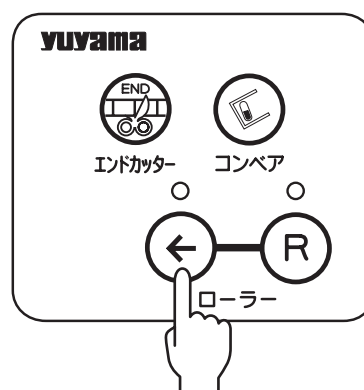
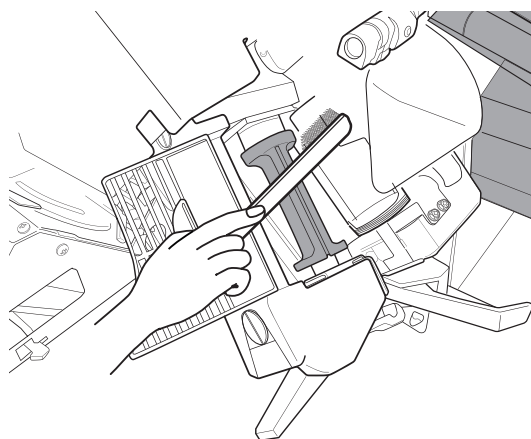


CAUTION

Be careful not to touch the surface of
the heat roller because it is extremely hot.

Press the heat roller normal rotation button to
rotate the heat roller and clean the other side
of the heat roller as well.

Note: Do not clean the heat roller while it is
rotating.



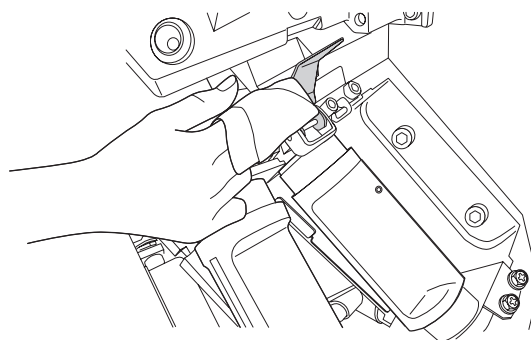
10 Clean the paper retainer.

Wipe with a soft cloth soaked in alcohol.

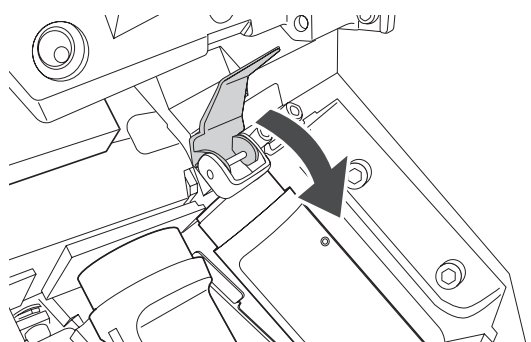


WARNING

The heat roller and its surrounding area are
extremely hot while the heat roller is heated
and right after the power is turned off. Thus
there is a risk to get burned.
Never touch the heat roller directly.



11 Return the paper retainer to its original position.



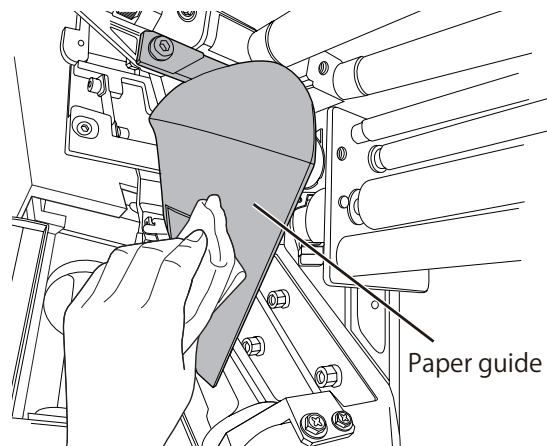
12 Clean the paper guide.

Wipe with a soft damp cloth that has been wrung out thoroughly.
After that, dry the surface with a soft cloth.



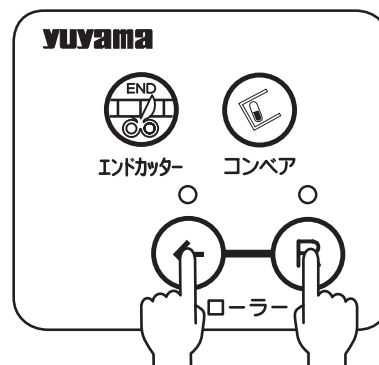
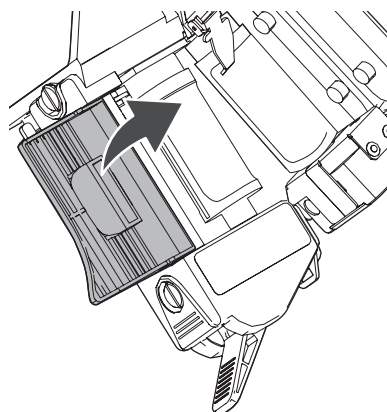
WARNING

The heat roller and its surrounding area are extremely hot while the heat roller is heated and right after the power is turned off. Thus there is a risk to get burned.
Never touch the heat roller directly.



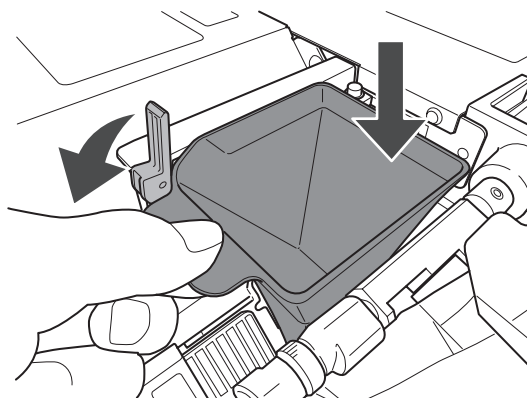
13 Close the heat roller cover.

After closing the heat roller cover, press the heat roller normal rotation button and heat roller reverse rotation button at the same time in order to move the heat roller to its paper feed position.



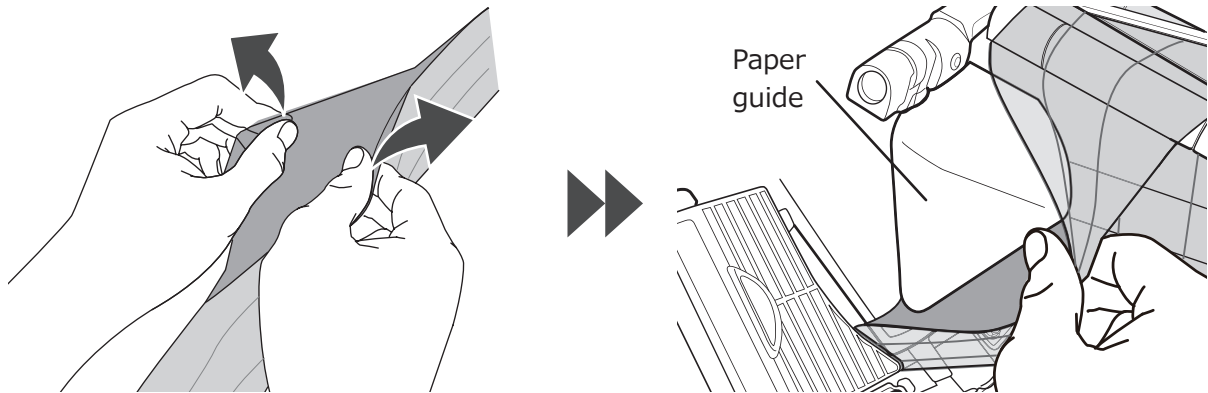
14 Attach the last hopper.

Attach the last hopper and then set the fixing lever in the position.

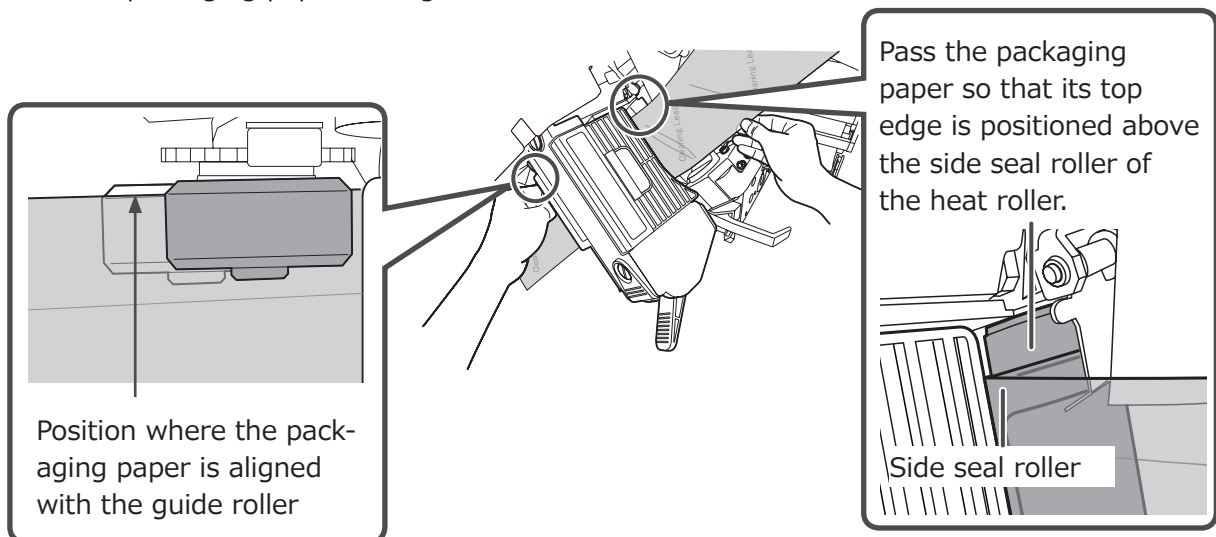


15 Pass the packaging paper through the heat roller.

Open the packaging paper and pass it with covering the paper guide.

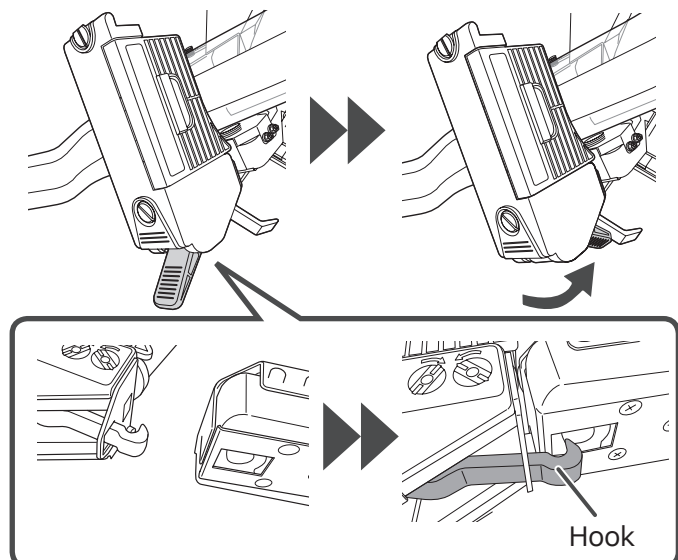


Pass the packaging paper through the heat roller.



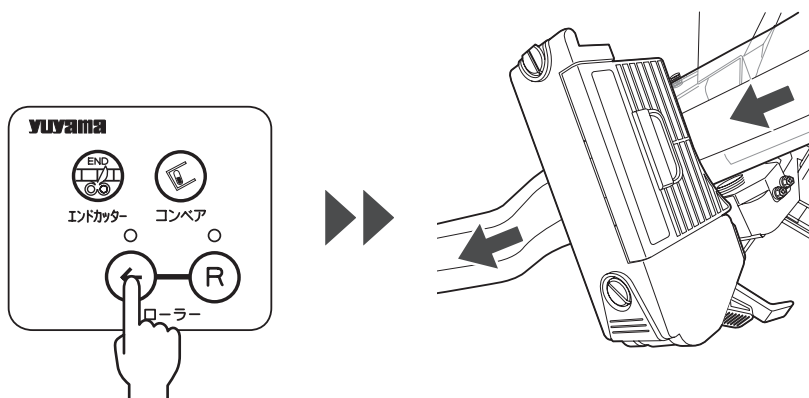
16 Close the heat roller.

Hold the lever and hitch the hook. Pull the lever to the right and close the heat roller.



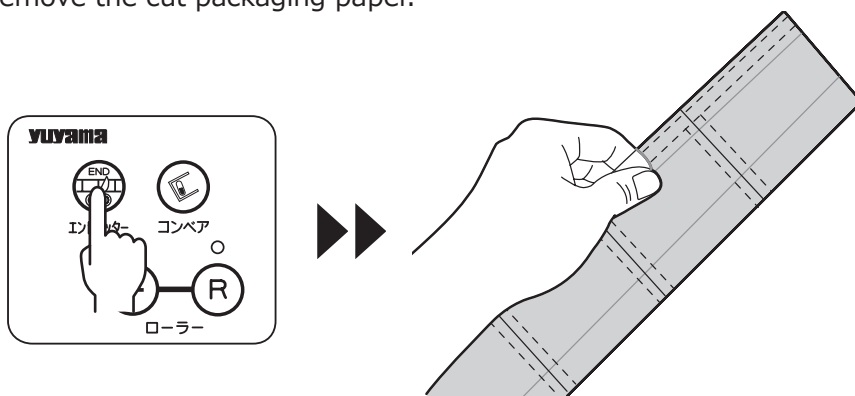
17 Feed the packaging paper.

Press the heat roller normal rotation button to feed the packaging paper.



18 Cut the packaging paper.

Check if the packaging paper is sealed properly. Then press the end cutter button to cut the packaging paper and remove the cut packaging paper.



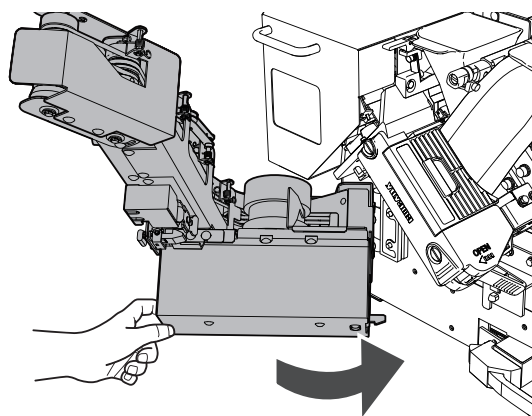
⚠ CAUTION

When the end cutter button is pressed, the conveyor works as well. Thus, be careful not to feed the cut packaging paper to the conveyor.

19 Close the conveyor.

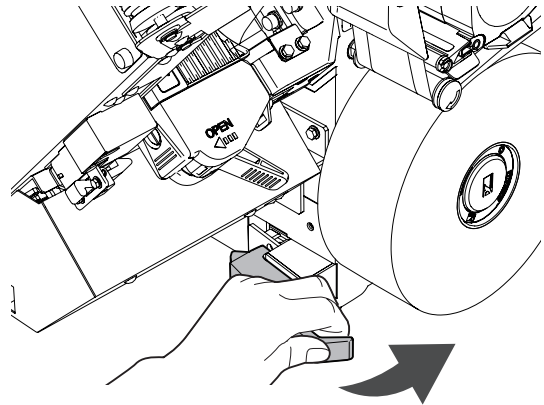
Hold the handle on the conveyor unit as shown in the right image and push the conveyor unit.

Push it all the way in until it clicks.

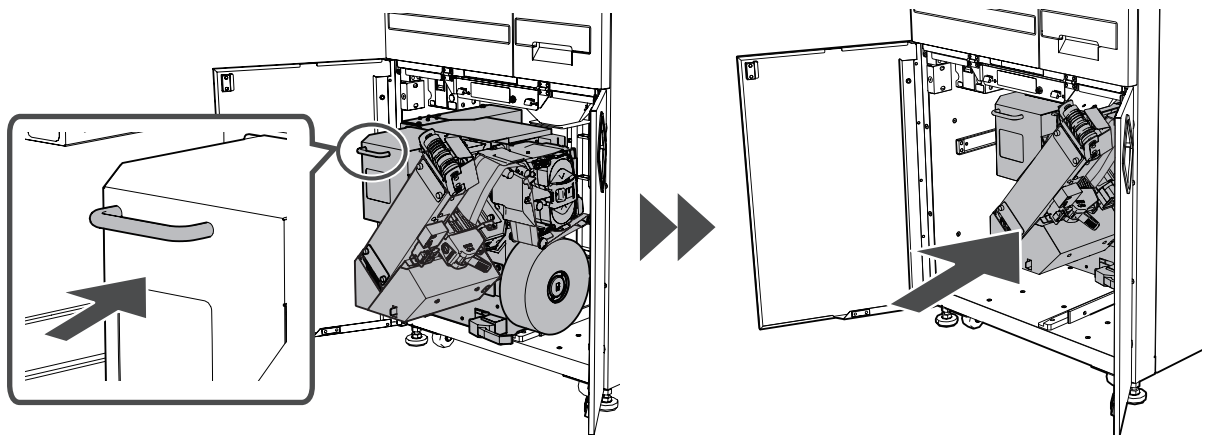


20 Return the packaging unit to its original position.

Hold the lever on the packaging unit and push the packaging unit.
Push it all the way in until it clicks.

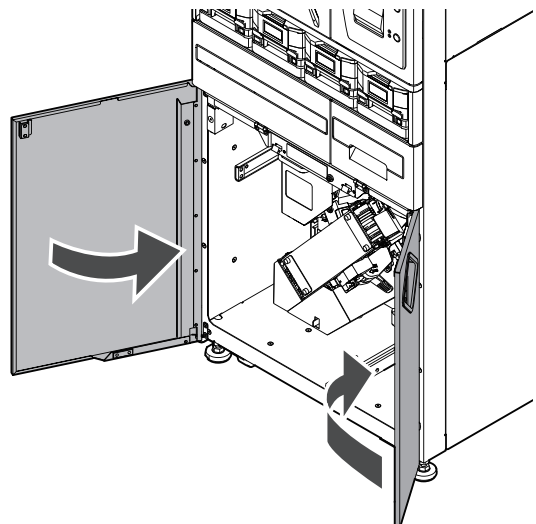


Hold the handle on the packaging unit and return the packaging unit to its original position.
Push it all the way in until it clicks.
When the packaging unit is set in place, the beep sound is played.



21 Close the lower doors.

Close the right door first and then close the left door.



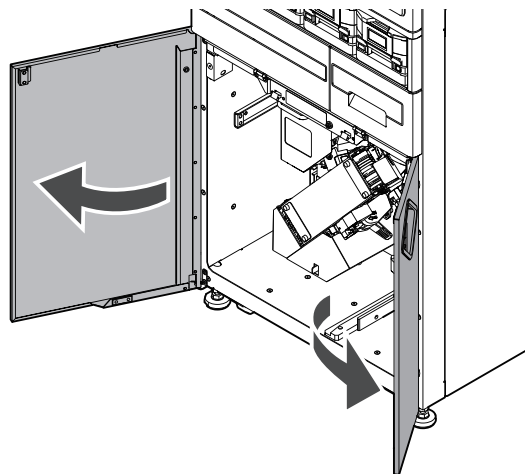
After dispensing medicine such as plain tablets, a small amount of powder may remain inside the packaging machine.

Maintain the packaging machine periodically to ensure that such powder is not mixed with other medicines during dispensing.

Be sure to keep the power turned on while cleaning the DTA.

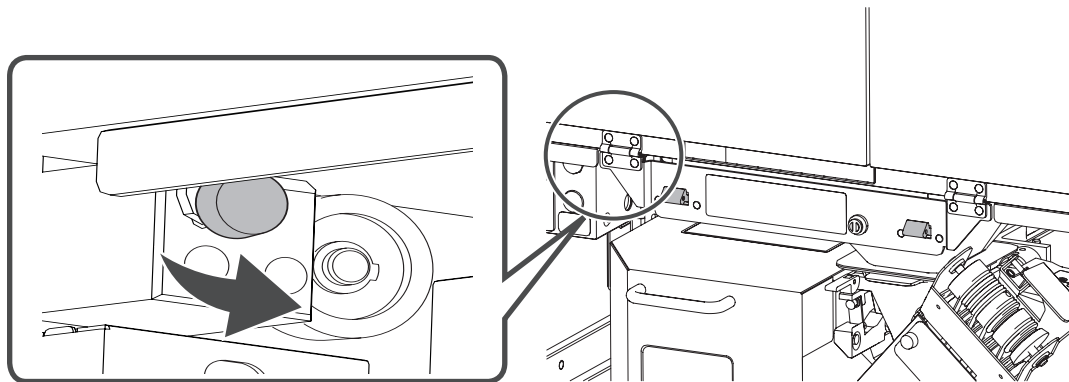
1 Open the lower doors.

Open the left door first and then open the right door.

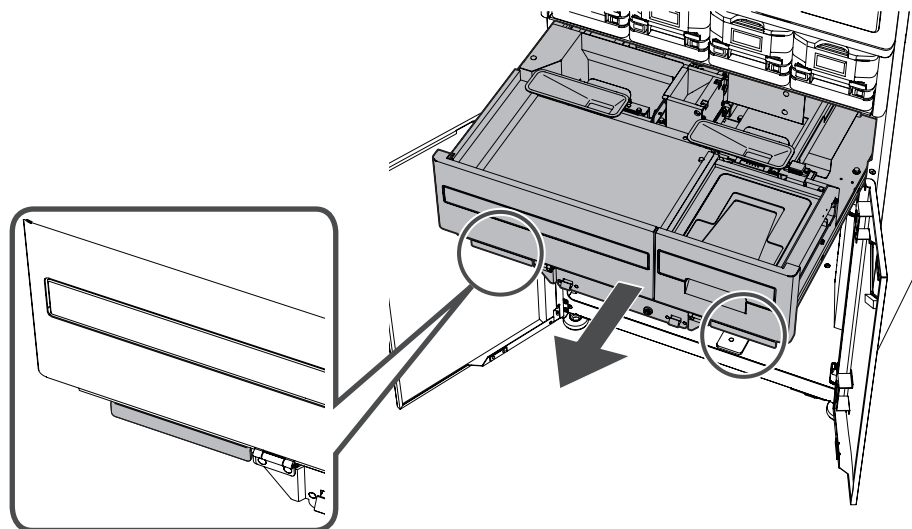


2 Pull out the DTA unit.

Turn the white screw which fixes the DTA unit to the left to remove it.

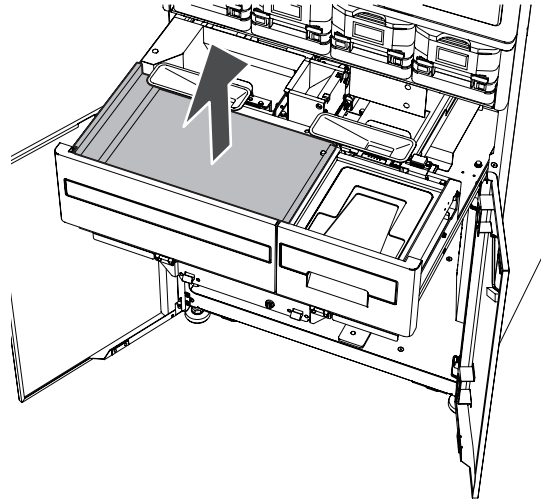


Hold the handles on each side and pull out the DTA unit.



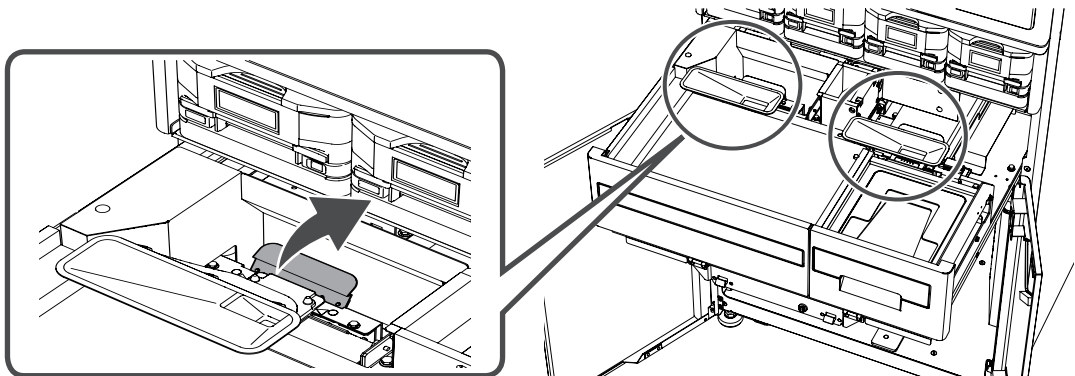
3 Remove the DTA partition tray cover.

Lift the DTA partition tray cover up to remove it.

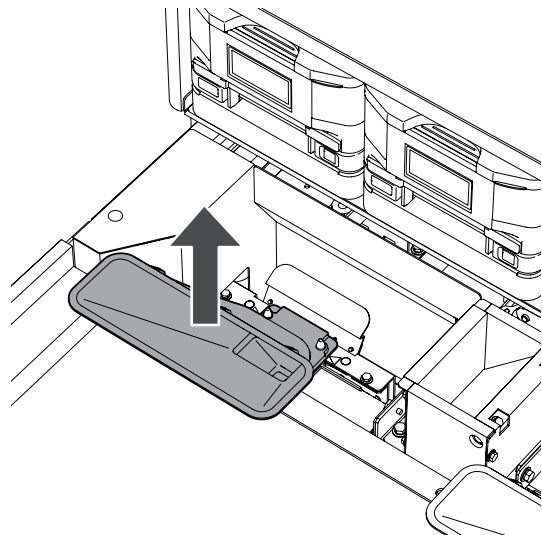


■ When Universal Canisters (Option) are Attached

When universal canisters are attached, the UC hopper needs to be removed first. Push the lever back.



While pushing the lever back, lift the UC hopper up to release it from the pins. Then lift the DTA partition tray cover up to remove it.

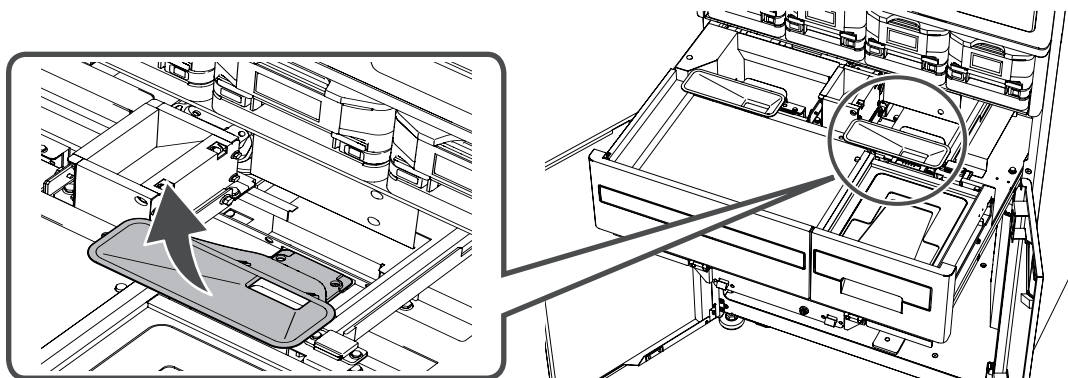


➔ DTA Unit (Continued)

■ When Universal Canisters (Option) and Slide Unit (Option) are Installed

When the slide unit is installed, the process to remove the right UC hopper is not the same as the another one.

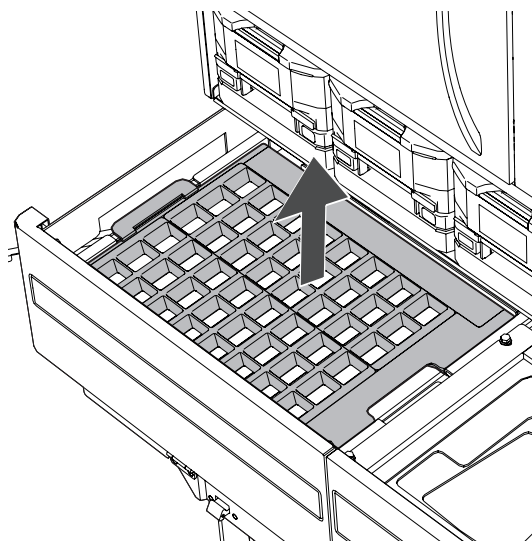
Pull the hopper obliquely upward and lift it up. Then lift the DTA partition tray cover up to remove it.



4 Remove the DTA partition tray.

When holding the DTA partition tray, hold its both sides.

Generally lift it up and remove it from the back side.



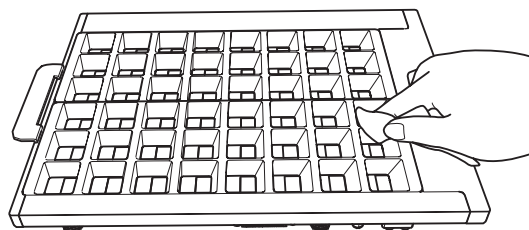
5 Clean the DTA partition tray.

Wipe with a soft dry cloth.



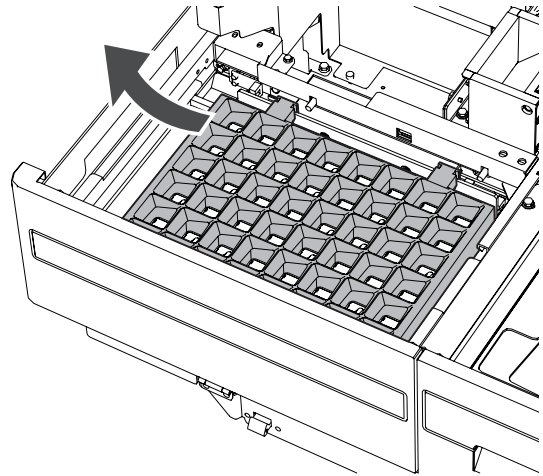
CAUTION

Do not wipe with a damp cloth or wash in water if LED lights are installed. Doing so may cause a failure.



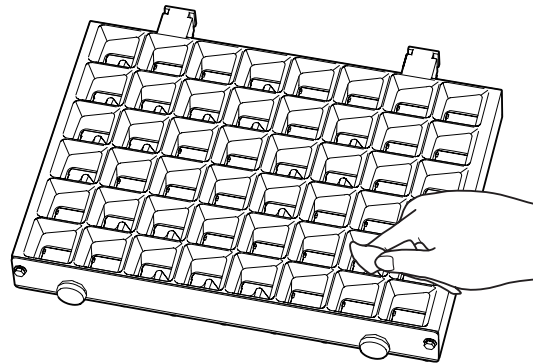
6 Remove the DTA feeder.

Gently lift it up and remove it from the left side.



7 Clean the DTA feeder.

Wipe with a soft damp cloth.
After that, dry with a soft cloth.

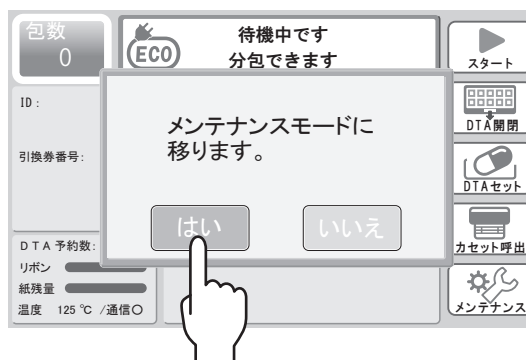


8 Enter the maintenance mode.

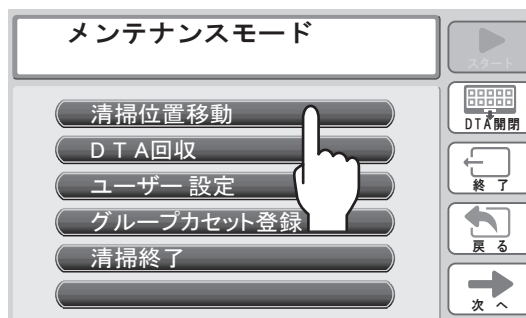
Tap [Maintenance].



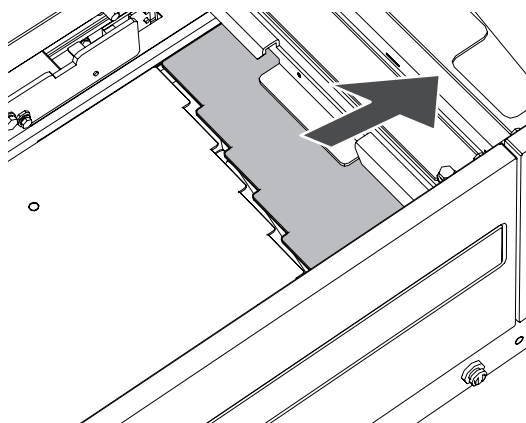
The confirmation message appears.
Then tap [Yes].
The maintenance mode appears.



Tap [Move to Cleaning Position].

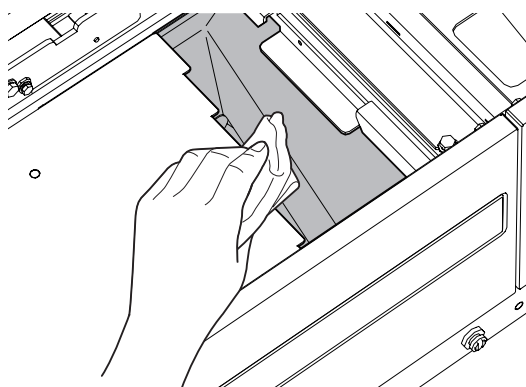


The slide plate automatically opens.

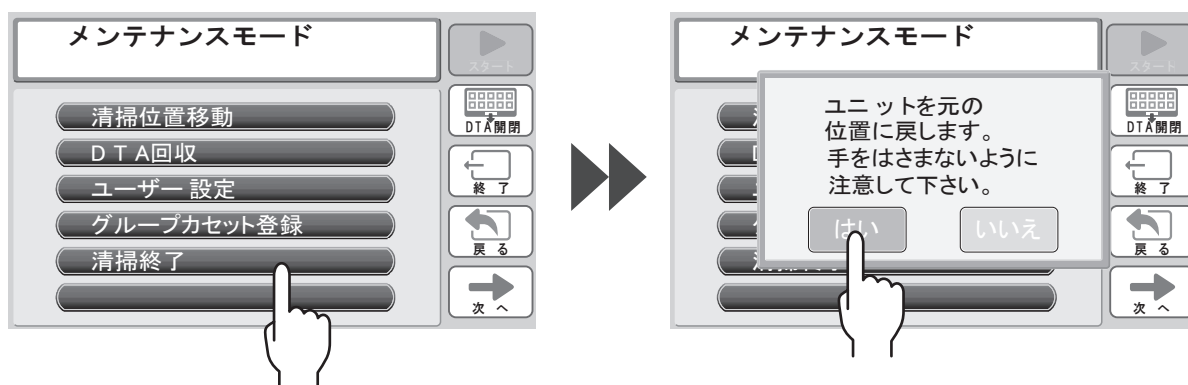


9 Clean the dispensing route in the DTA.

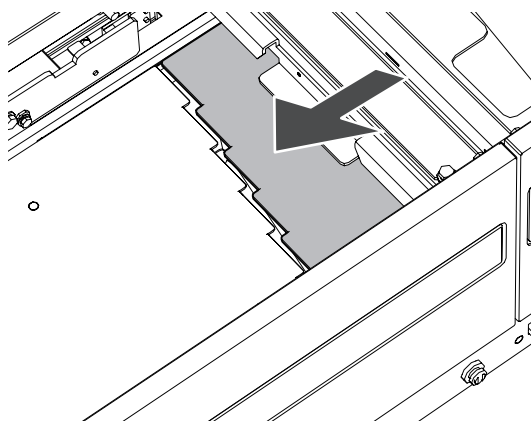
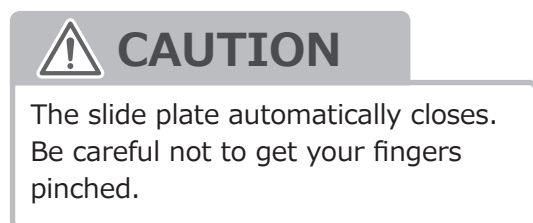
Wipe with a soft damp cloth.
After that, dry with a soft cloth.



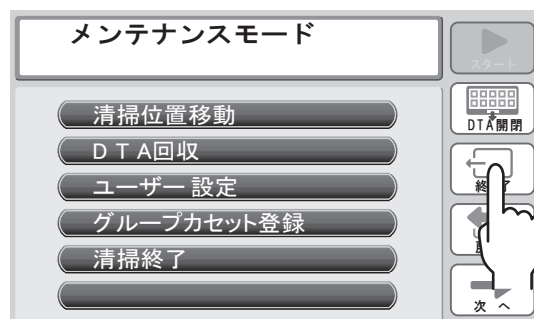
After cleaning is completed, tap [End Cleaning].
The confirmation message will appear. Then tap [Yes].



The slide plate automatically closes.

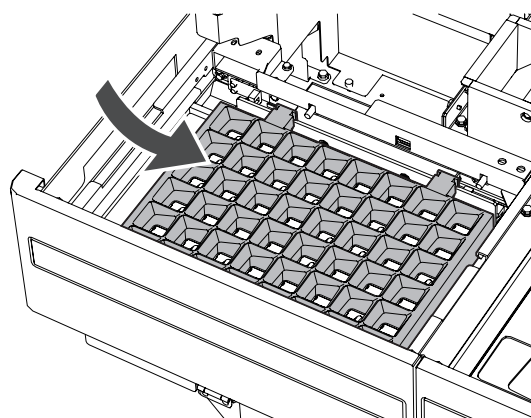


Tap [End] to end the maintenance mode.



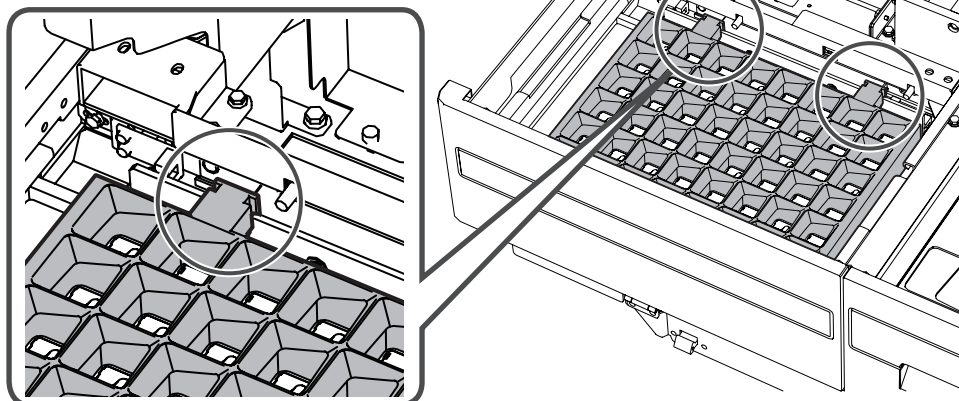
10 Attach the DTA feeder and DTA partition tray.

When attaching the DTA feeder, slide it from left to right.



➔ DTA Unit (Continued)

Be sure that the DTA feeder securely fit in the grooves.

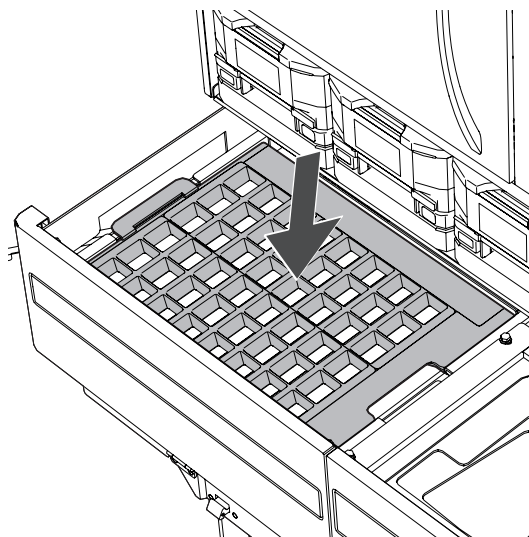


CAUTION

Be sure that the slide plate is closed before attaching the DTA feeder.

When attaching the DTA partition tray, fit the front in place first.

When returning the DTA partition tray to its original position, be sure to check if it is set in place.



11 Attach the DTA partition tray cover.

Attach the DTA partition tray cover by hooking it.

