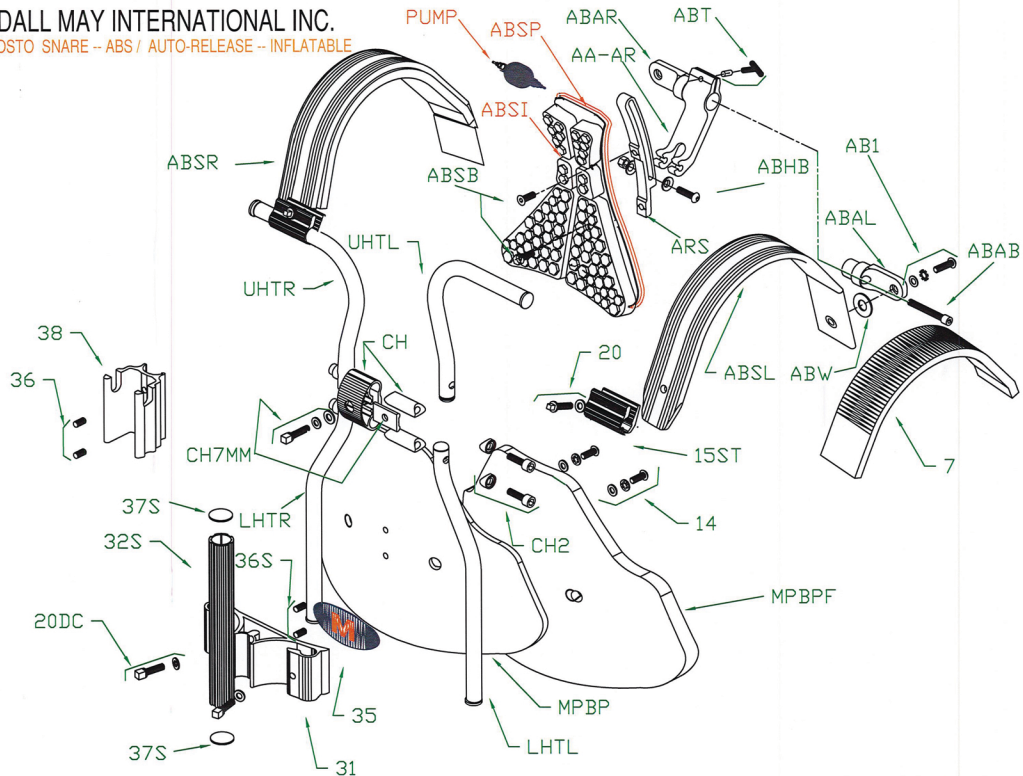


**RANDALL MAY INTERNATIONAL INC.**  
**MONOPOSTO SNARE -- ABS / AUTO-RELEASE -- INFLATABLE**

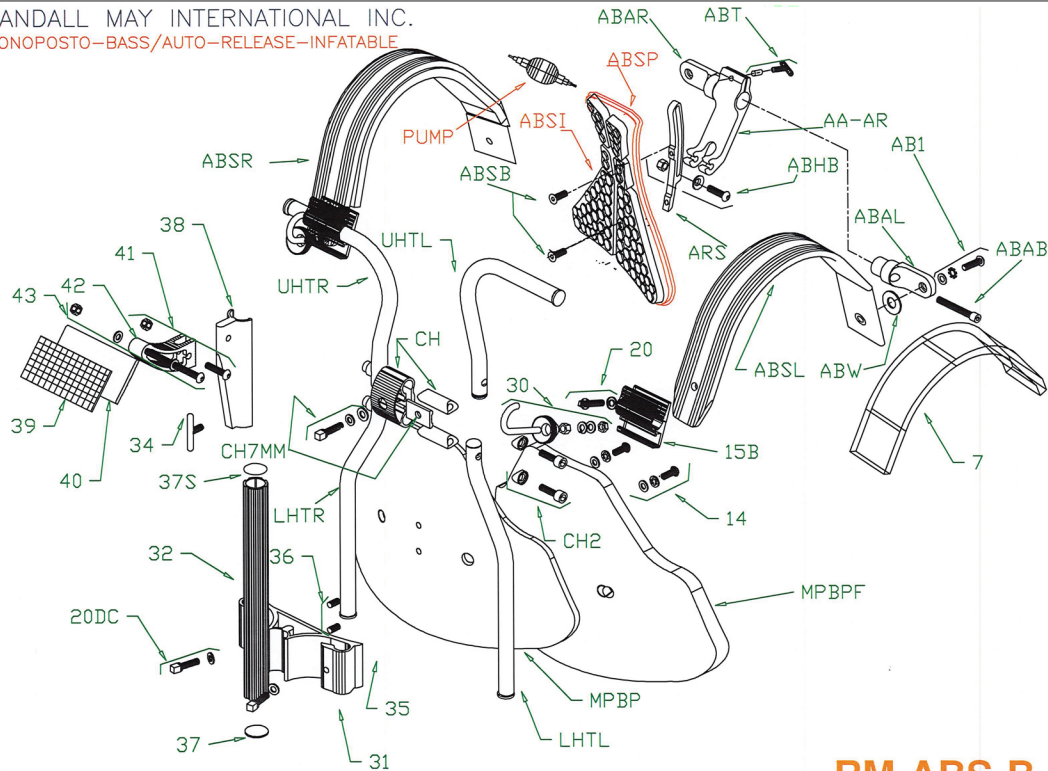


**ABS SNARE CARRIER w/ Auto-Release**

Model #	REF #	PART #	DESCRIPTION/SPEC	UOM
RM-ABS-S	7	RM-TV7	Shoulder Foam (pair)	(pair)
	14	RM-TV14DC	SS Bolt/nut/washer set in ziplock pouch RM-TV	set
	15ST	RM-TV15ST	Shoulder Tube Clamp (ea)	EA
	20	RM-TROD627	Drum key Bolt and Washer Stainless for Clamp M6x27	EA
	20DC	RM-TVHMS-20DC	Stainless Keybolt and Washer	EA
	31	RM-TVHMS-31	Monoposto Snare Bridge	EA
	32S	RM-TVHMS-32S	Monoposto Snare Tube with Caps	EA
	36	RM-TVHMS-36	1/4 - 20 X 1/4" Socket Set Screws (pair)	(pair)
	36S	RM-TVHMS-36S	1/4 - 20 X 1/2" Stainless Socket Head cap (pair)	(pair)
	37S	RM-TVHMS-37S	Monoposto/Bipost Snare Tube Cap	EA
	38	RM-TVHMS-38	Monoposto Snare U-Channel	EA
	MPBP	RM-MPBP	Belly Plate with Foam	EA
	MPBPF	RM-MPBPF	Belly Plate Foam Only	EA
	UHTR/UHTL/CH/CH7MM/LHTR/LH TL/CH2	RM-RTH	Contour Hinge Tube Assembly (Double Hinge)	EA
	CH7MM	RM-CH7MM	Stainless Steel Keybolt with 2 Washers	EA
	ABSR	RM-ABSR-Y	Right Shoulder for ABS w/FOAM	EA
	ABSL	RM-ABSR-Y	Left Shoulder for ABS w/FOAM	EA
	ABW	RM-ABW-Y	Rubber Washer for ABS	EA
	ABAB	RM-ABAB-Y	Join Bolt for Rotational Axle	EA
	ABAL	RM-ABAL-Y	Left ABS pad attachment to Shoulder	EA
	ABAR	RM-ABAR-Y	Right ABS pad attachment to Shoulder	EA
	AB1	RM-AB1-Y	Bolt and Washers - ABS	EA
	ABSB	RM-ABSB-Y	Backsaver Screws	EA
	ABS	RM-ABS-Y	Adjustable Back Support Plate with Foam	EA
	ARS	RM-ARS-Y	Slider piece for ABS Auto-Release	EA
	ABHB	RM-ABHB-Y	Bolt, Nut, and Washers for ABS Back Pad	EA
AA-AR	RM-AAAR-Y	Arm to attach Slider Assembly on ABS	EA	
ABT	RM-ABT-Y	3/4" Tbolt with Pin and Spacer	EA	



RANDALL MAY INTERNATIONAL INC.  
 MONOPOSTO-BASS/AUTO-RELEASE-INFATABLE



**RM-ABS-B**

**ABS MONOPOSTO BASS CARRIER w/ Auto-Release**

Model #	REF #	PART #	DESCRIPTION/SPEC	UOM
RM-ABS-B	7	RM-TV7	Shoulder Foam (pair)	(pair)
	14	RM-TV14DC	SS Bolt/nut/washer set in ziplock pouch RM-TV	set
	15B	RM-TV15B	Shoulder Clamp for Bass Carrier	EA
	20	RM-TROD627	Drum key Bolt and Washer Stainless for Clamp M6x27	EA
	20DC	RM-TVHMS-20DC	Stainless Keybolt and Washer	EA
	30	RM-TV30	J-Hook With Coupler Nut Assembly	EA
	31	RM-TVHMS-31	Monoposto Bridge Snare/Bass	EA
	32	RM-TVHMS-32S	Monoposto Tube with Caps	EA
	37S	RM-TVHMS-37S	MONOPOSTO/BIPOSTO TUBE CAP	EA
	34	RM-SH37AH	1/4 - 20 X 3/8" Stainless Steel Socket Head Screw	EA
	39	RM-TV39	Non-Skid Pad for Angle Plate	EA
	40	RM-TV40	Adjustable Angle Plate - No Pad	EA
	RM-TVHMB-DH	RM-TVHBM-DH	Monoposto Sliding Angle Plate Assm. w/o tube	EA
	MPBP	RM-MPBP	Belly Plate with Foam	EA
	MPBPF	RM-MPBPF	Belly Plate Foam Only	EA
	H/CH7MM/LHT	RM-RTH	Contour Hinge Tube Assembly (Double Hinge)	EA
	CH7MM	RM-CH7MM	Stainless Steel Keybolt with 2 Washers	EA
	ABSR	RM-ABSR-Y	Right Shoulder for ABS w/FOAM	EA
	ABSL	RM-ABSR-Y	Left Shoulder for ABS w/FOAM	EA
	ABW	RM-ABW-Y	Rubber Washer for ABS	EA
	ABAB	RM-ABAB-Y	Join Bolt for Rotational Axle	EA
	ABAL	RM-ABAL-Y	Left ABS pad attachment to Shoulder	EA
	ABAR	RM-ABAR-Y	Right ABS pad attachment to Shoulder	EA
	AB1	RM-AB1-Y	Bolt and Washers - ABS	EA
	ABSB	RM-ABSB-Y	Backsaver Screws	EA
	ABS	RM-ABS-Y	Adjustable Back Support Plate with Foam	EA
	ARS	RM-ARS-Y	Slider piece for ABS Auto-Release	EA
ABHB	RM-ABHB-Y	Bolt, Nut, and Washers for ABS Back Pad	EA	
AA-AR	RM-AAAR-Y	Arm to attach Slider Assembly on ABS	EA	
ABT	RM-ABT-Y	3/4" Tbolt with Pin and Spacer	EA	