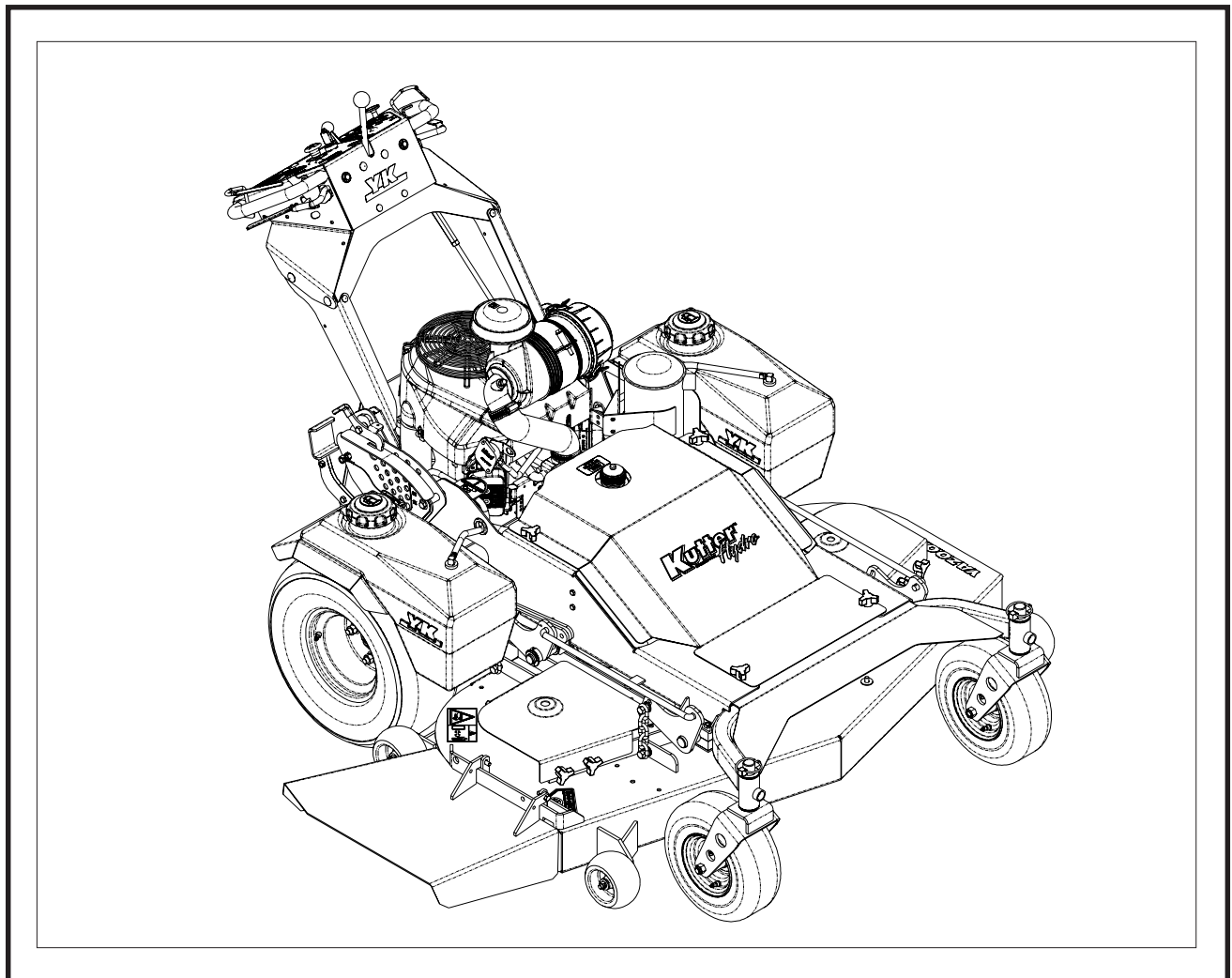


YAZOO/KEES



Parts manual

Models:

KKFW48171

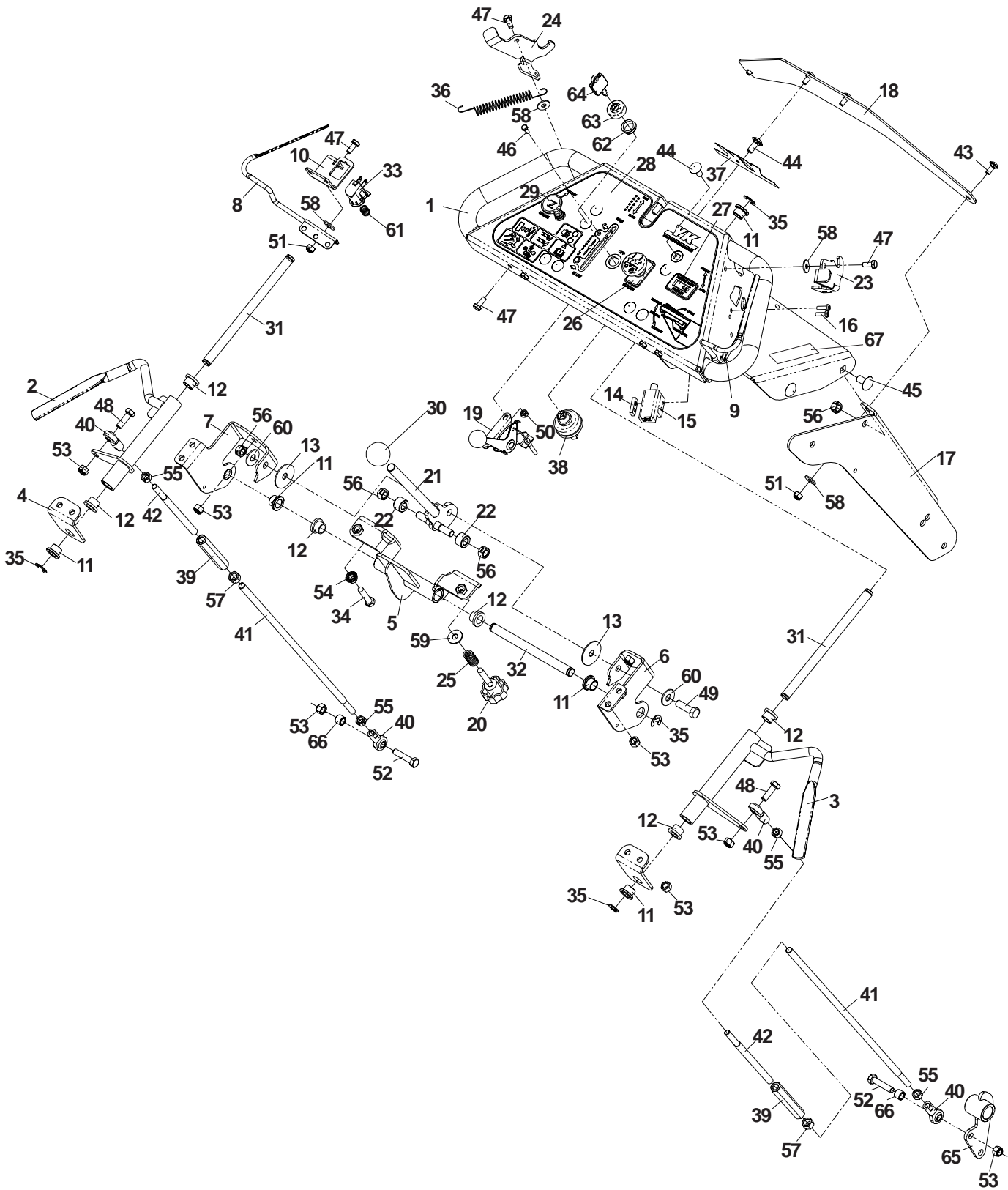
KKFW52211

CONTENTS

HANDLE ASSEMBLY	4-5
MAIN FRAME	6-7
COVERS	8-9
POWER UNIT	10-11
CASTER ASSEMBLY	12
HYDRAULIC KIT	13
17 HP ENGINE	14-15
21 HP ENGINE	16-17
ELECTRICAL COMPONENTS	18-19
DECK LIFT PEDAL	20
WHEEL MOTOR ASSEMBLY	21
48" DECK	22-23
52" DECK	24-25

NOTE: ALL FASTENERS ARE GRADE 5 UNLESS OTHERWISE SPECIFIED.

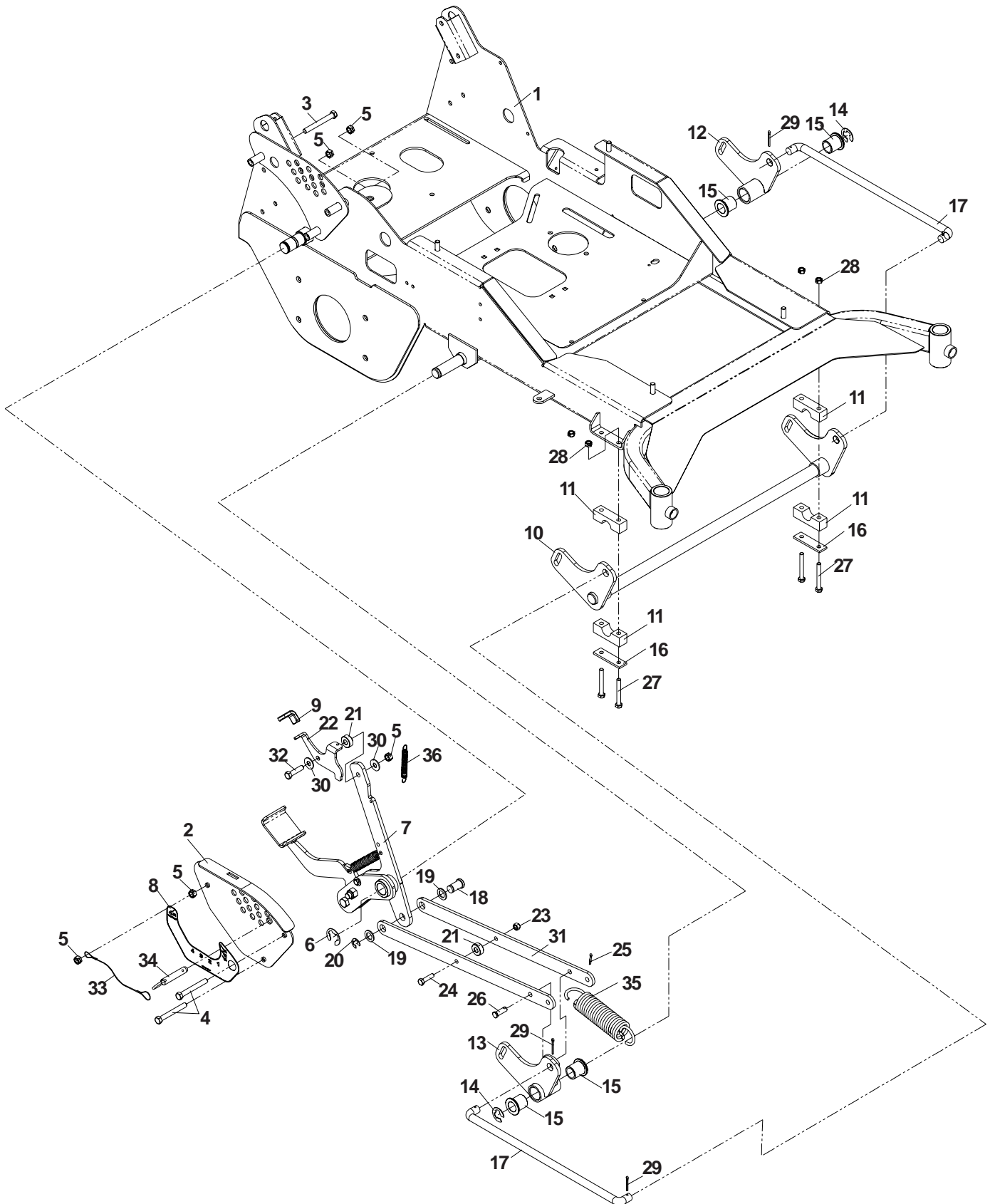
HANDLE ASSEMBLY



HANDLE ASSEMBLY

ITEM	PART NO.	QTY.	DESCRIPTION	ITEM	PART NO.	QTY.	DESCRIPTION
1	110579	1	HANDLE W/DECALS	33	109570	2	SWITCH, N.C.
2	109594	1	DRIVE LEVER, LEFT	34	109765	1	HCS, 5/16-18 X 1 1/2, GR5, SPECIAL
3	109593	1	DRIVE LEVER, RIGHT	109766	1	HARNES, UPPER, (NOT SHOWN)
4	109120	2	BRACKET, SUPPORT	35	101949	6	E-RING, 1/2"
5	109126	1	GROUND SPEED, WELDMENT	36	109148	2	NEUTRAL SPRING
6	109127	1	BRACKET, RIGHT, GROUND SPEED	37	111109	1	DECAL, PPS
7	109128	1	BRACKET, LEFT GROUND SPEED	38	101770	1	SWITCH, IGNITION
8	109130	1	OP, WELDMENT, LEFT	39	109149	2	TURNBUCKLE, 3/8
9	109132	1	OP, WELDMENT, RIGHT	40	102590	4	BALL END, R.H.
10	109133	1	BRACKET, LEFT, OPERATION	41	109577	2	LINKAGE, LONG
.....	109134	1	BRACKET, RIGHT OPERATION, (NOT SHOWN)	42	109615	2	LINKAGE, SHORT
11	110552	6	BUSHING, FLANGE	43	109034	4	RHSNB, 1/4-20 X 5/8, GR5
12	100032	6	BUSHING, NYLON FLANGED	44	109100	10	RHSNB, 5/16-18 X 3/4, GR5
13	102998	2	WASHER, FRICTION	45	109117	4	RHSNB, 3/8-16 X 3/4, GR5
14	102678	2	PLATE, TAPPED	46	990411	2	HCS, #10-24 X 1/2
15	101080	2	SWITCH, N.C.	47	990072	8	HCS, 1/4-20 X 5/8, GR5
16	976952	4	SCREW, #10-24	48	990209	2	HCS, 5/16-18 X 1, GR5
17	109804	1	LEG, RIGHT, FLT	49	976941	1	HCS, 3/8-16 X 1 1/4, GR5
.....	109803	1	LEG, LEFT, FLT (NOT SHOWN)	50	976977	2	NUT, #10-24, NYLOC
18	109141	1	BRACE	51	976978	12	NUT, 1/4C, NYLOC
19	103275	1	CABLE, THROTTLE	52	976935	2	HCS, 5/16-18 X 1 1/2, GR5
20	109764	1	KNOB, THREADED STUD	53	990717	14	NUT, 5/16C, NYLOC
21	109613	1	ROLLER LEVER	54	990585	1	NUT, 5/16C
22	109612	2	ROLLER	55	990223	4	NUT, 5/16F
23	109142	1	THUMB LATCH, RIGHT	56	990546	7	NUT, 3/8C, CENTER LOCK
24	109143	1	THUMB LATCH, LEFT	57	990155	2	NUT, 3/8F
25	101224	1	SPRING	58	990598	8	WASHER, 1/4
26	101768	1	SWITCH, CLUTCH	59	990692	1	WASHER, 5/16
27	108016	1	HOURMETER, LCD, W/FLASH ALERT	60	990517	2	WASHER, 3/8
28	109767	1	DECAL, CONSOLE	61	110509	2	SPRING, SWITCH
29	109954	1	CABLE, CHOKE	976856	3	WIRE TIRE (NOT SHOWN)
30	100147	1	KNOB, SHIFT	62	103177	1	NUT, IGNITION SWITCH
31	109112	2	PIVOT SHAFT	63	103178	1	CAP, IGNITION SWITCH NUT
32	109121	1	PIVOT SHAFT, GROUND SPEED	64	104812	1	KEY, PADDED GRIP
				65	109953	1	BELLCRANK, RIGHT
				66	102827	2	SPACER, PULLEY
				67	110769	1	DECAL, PPS, RIGHT
				110770	1	DECAL, PPS, LEFT (NOT SHOWN)
				110864	1	DECAL, DUAL HEIGHT (NOT SHOWN)
				110984	2	GRIP (NOT SHOWN)

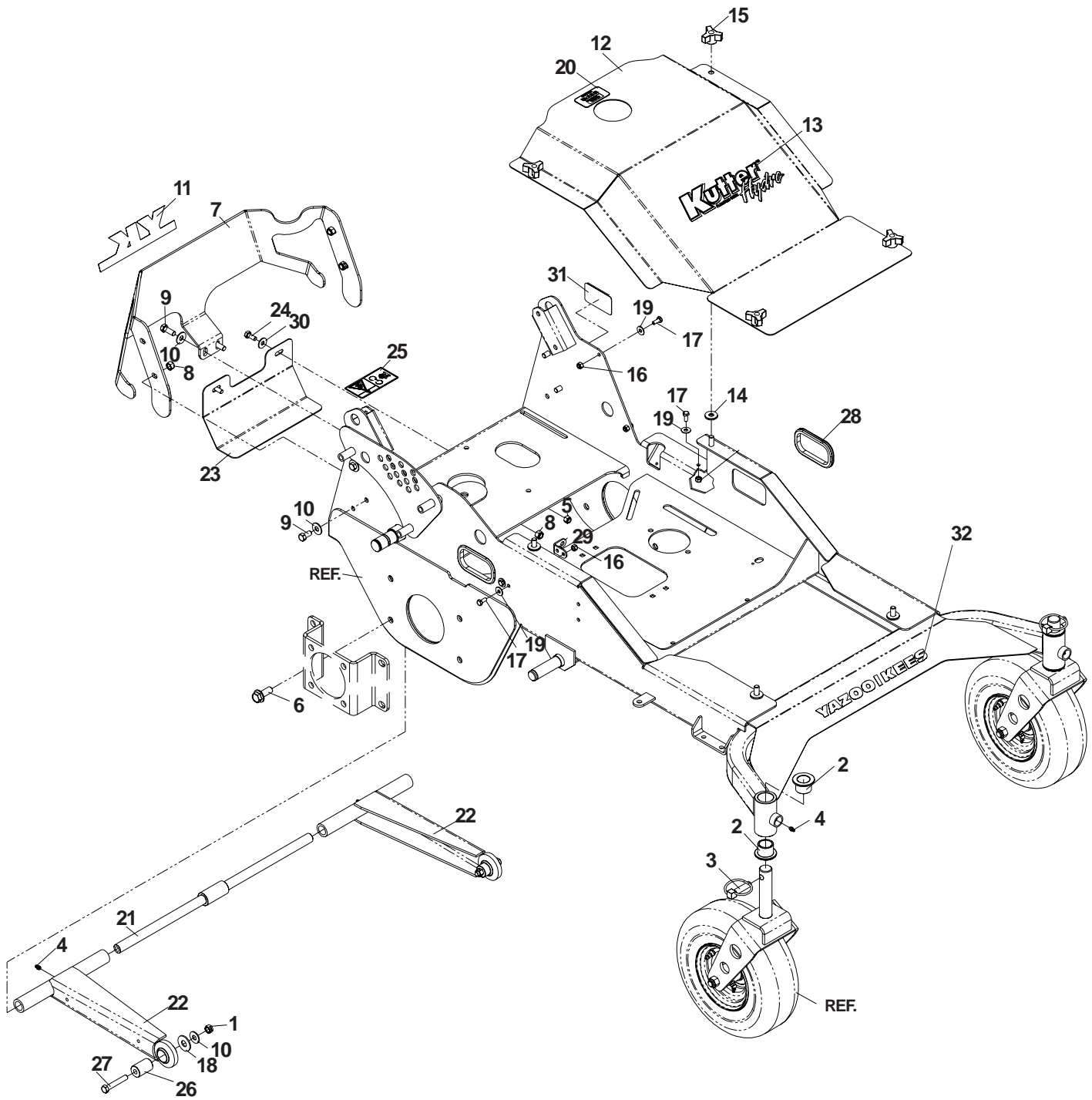
MAIN FRAME



MAIN FRAME

ITEM	PART NO.	QTY.	DESCRIPTION
1	107677	1	MAIN FRAME W/DECALS
2	107018	1	HEIGHT PLATE
3	102754	1	NUT, 3/8C X 3 1/2
4	101341	2	NUT, 3/8C X 3
5	990546	14	NUT, 3/8C, CENTER LOCK
6	912730	1	E-RING 1"
7	107092	1	DECK LIFT
8	107028	1	HEIGHT DECAL
9	976527	1	LATCH GRIP
10	107030	1	FRONT LIFT ARM
11	104808	4	PILLOW BLOCK
12	107031	1	BELLCRANK, LEFT
13	107032	1	BELLCRANK, RIGHT
14	101802	2	E-RING, 7/8
15	101232	4	BUSHING, FLANGED, PM
16	104807	2	REINFORCEMENT BAR
17	107038	2	LIFT LINKAGE
18	105060	1	CLEVIS PIN
19	991043	2	BUSHING, 5/8, MACH.
20	105069	1	E-RING, 5/8
21	102656	2	SPACER
22	107041	1	TRANSPORT LOCK
23	990717	11	NUT, 5/16C, NYLOC
24	990627	1	HCS, 5/16-18 X 1 1/4
25	990365	1	COTTER PIN
26	977703	1	CLEVIS PIN
27	991046	4	HCS, 5/16-18 X 2 1/2
28	990184	10	NUT, 5/16C, CENTER LOCK
29	990297	4	COTTER PIN
30	990517	16	WASHER, 3/8
31	107040	2	LIFT STRAP
32	107042	1	HCS, 3/8-16 X 1 1/2, GR8
33	102563	1	LANYARD
34	102526	1	LIFT PIN
35	102642	1	EXTENSION SPRING, DECK BELTS
36	977250	1	SPRING

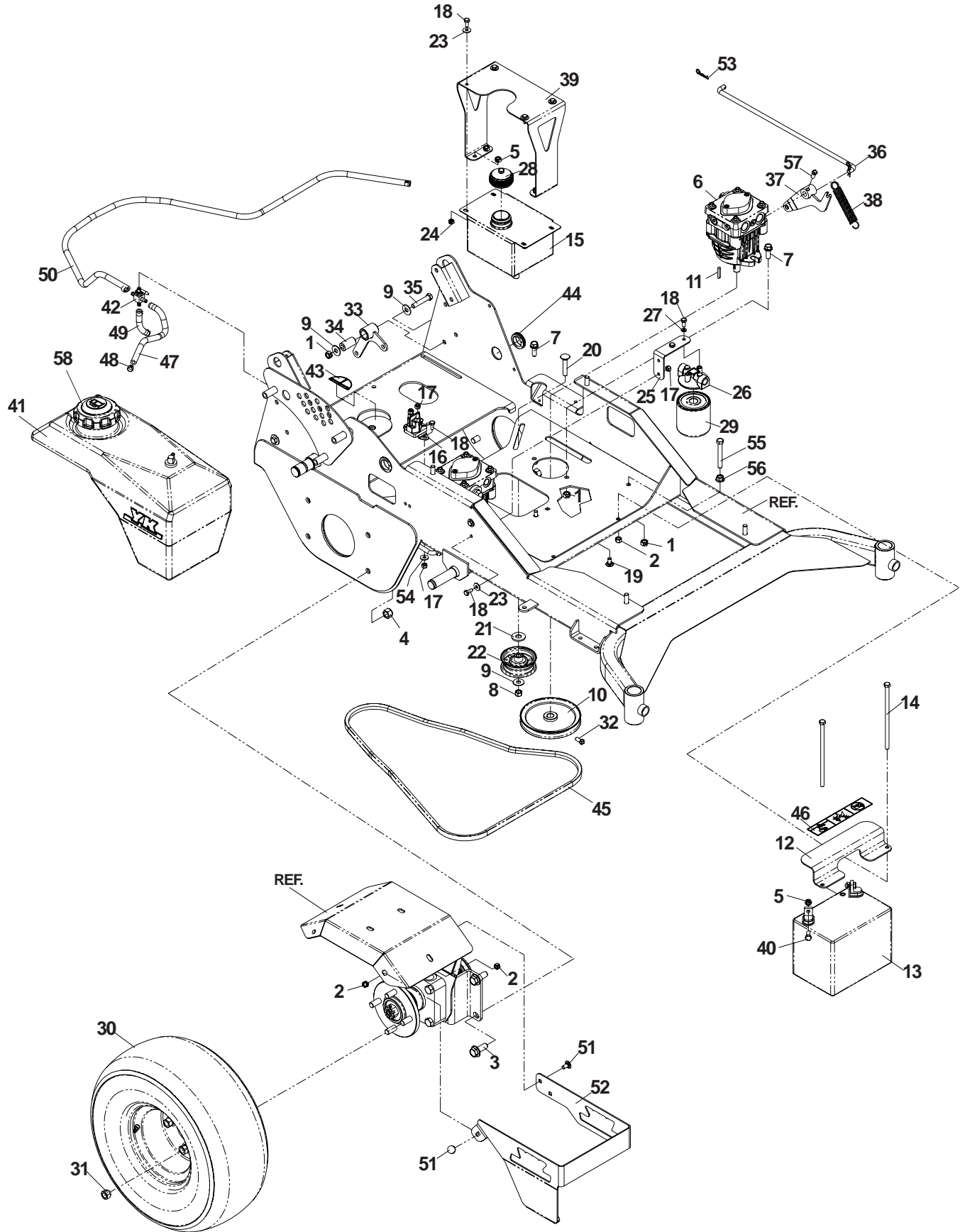
COVERS



COVERS

ITEM	PART NO.	QTY.	DESCRIPTION
1	990546	14	NUT, 3/8C, CENTER LOCK
2	106656	4	BUSHING, CASTER
3	101874	2	LYNCH PIN, 7/16
4	976998	4	ZERK
5	990717	11	NUT, 5/16C, NYLOC
6	990622	8	BOLT, 1/2-13 X 1 1/4, WHIZLOCK
7	107050	1	REAR CROSS BRACE
8	976979	7	NUT, 3/8-16, NYLOC
9	990563	6	HCS, 3/8-16 X 1
10	990517	15	WASHER, 3/8
11	106456	1	DECAL, YK
12	107052	1	HOOD
13	110768	1	DECAL, KUTTER FLOAT DECK HYDRO
14	102056	4	WASHER, 3/8, SEALING
15	102070	4	KNOB, 3 PRONG
16	976978	11	NUT, 1/4-20, NYLOC
17	990072	15	HCS, 1/4-20 X 5/8
18	990550	3	WASHER, 1/2
19	990598	11	WASHER, 1/4
20	105301	1	DECAL, MOBIL
21	107070	1	STRUT SHAFT
22	107073	2	STRUT
23	107075	1	BELT SHIELD, LOWER
24	976934	4	HCS, 5/16-18 X 3/4
25	105744	1	DECAL, EURO DANGER, BELT DRIVES
26	105641	2	SPACER, STRUT
27	990629	2	HCS, 3/8-16 X 2 1/4
28	107116	2	GROMMET
29	107120	1	TAB
30	990692	2	WASHER, 5/15
31	101881	1	DECAL, PROP 65
32	103420	1	DECAL, YAZOO/KEES

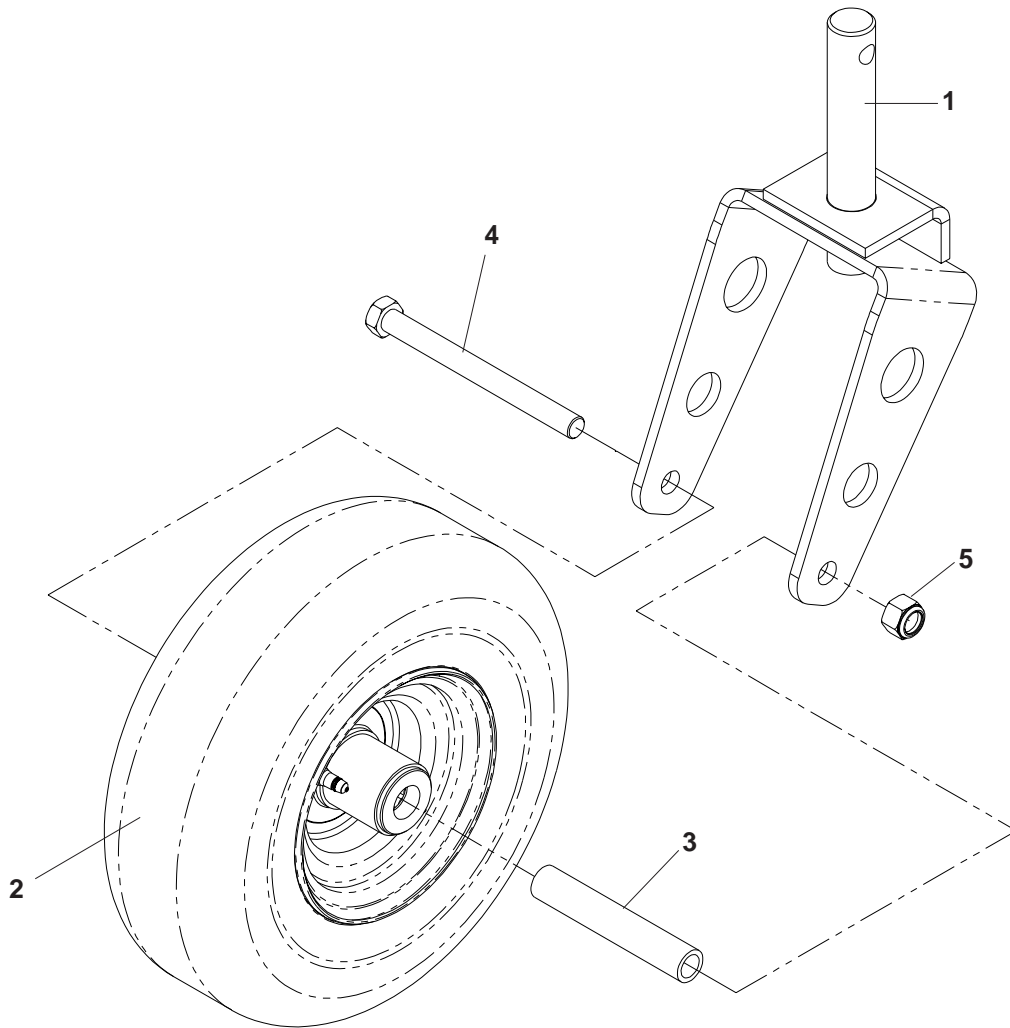
POWER UNIT



POWER UNIT

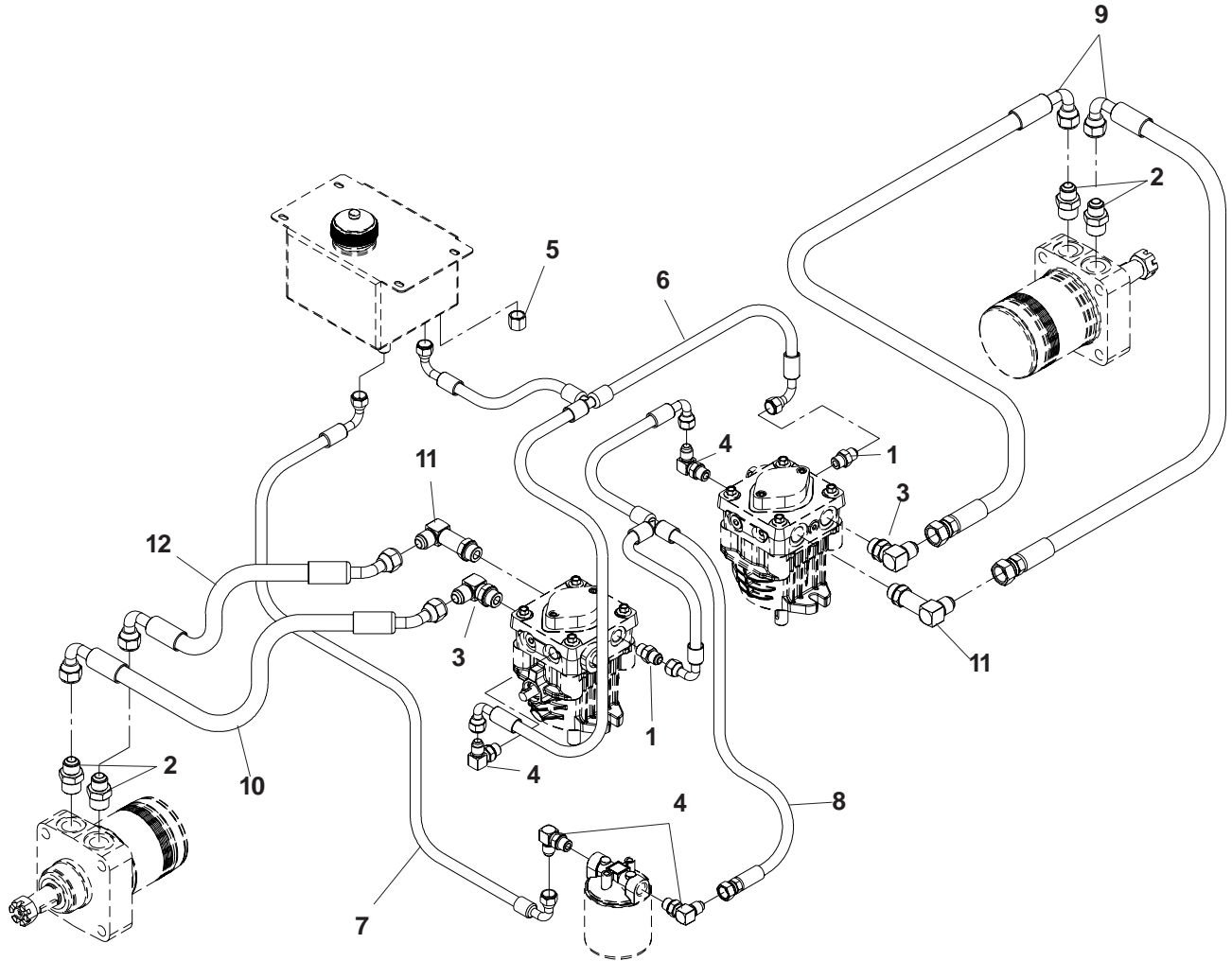
ITEM	PART NO.	QTY.	DESCRIPTION	ITEM	PART NO.	QTY.	DESCRIPTION
1	990546	14	NUT, 3/8-16, CENTER LOCK	34	101836	2	SLEEVE BUSHING
2	990717	11	NUT, 5/16-18, NYLOC	35	990588	2	HCS, 3/8-16 X 2
3	990622	8	BOLT, 1/2-13 X 1 1/4, WHIZ LOCK	36	107062	2	PUMP LINKAGE
4	101331	8	NUT, 1/2-13, NYLOC	37	107064	1	PUMP ARM, LEFT
5	990184	10	NUT, 5/16-18, CENTER LOCK	107059	1	PUMP ARM, RIGHT (NOT SHOWN)
6	108246	2	PUMP, 10A W/.031 POPPETS	38	916159	2	SPRING
7	990582	4	HCS, 3/8-16 X 1, SERRATED HEAD	39	107069	1	RESERVOIR SUPPORT
8	976979	7	NUT, 3/8-16, NYLOC	40	976934	4	HCS, 5/16-18 X 3/4
9	990517	15	WASHER, 3/8	41	107067	2	FUEL TANK
10	102228	2	PULLEY	42	102679	1	FUEL VALVE
11	101177	2	KEY, METRIC	43	102670	1	DECAL, FUEL VALVE
12	105942	1	BATTERY STRAP	44	105974	2	RUBBER GROMMET
13	102463	1	BATTERY, WET	45	107097	1	PUMP BELT
14	105826	2	HCS, 5/16-18 X 7	46	105745	1	DECAL, EURO BATTERY WARNING
15	105024	1	OIL RESERVOIR	47	104993	1	FUEL LINE, 14"
16	101714	1	SOLENOID	48	912222	6	HOSE CLAMP
17	976978	11	NUT, 1/4-20	49	932956	1	FUEL LINE, 10"
18	990072	15	HCS, 1/4-20 X 5/8	50	107113	1	FUEL LINE, 53"
19	990799	4	BOLT, 5/16-18 X 5/8, CARRIAGE	51	109100	6	RHSNB, 5/16-18 X 3/4
20	100145	1	RHSNB, 3/8-16 X 2	52	107723	1	FUEL TANK GUARD, RIGHT
21	990550	3	WASHER, 1/2	107721	1	FUEL TANK GUARD, LEFT (NOT SHOWN)
22	919078	1	IDLER PULLEY	53	976988	4	HAIRPIN
23	990598	11	WASHER, 1/4	54	990053	2	LOCKWASHER, 1/4, IT
24	990761	4	NUT, 1/4-20, CENTER LOCK	55	102612	1	HCS, 3/8-16 X 2 3/4
25	107055	1	FILTER MOUNT	56	990613	1	NUT, 3/8-16
26	101165	1	FILTER HEAD	57	105079	2	SETSCREW, 5/16-18 X 5/8, CONE POINT
27	990052	2	LOCKWASHER, 1/4	107649	1	LOWER HARNESS, (NOT SHOWN)
28	101202	1	OIL CAP	103306	2	POSITIVE CABLE (NOT SHOWN)
29	102606	1	FILTER ELEMENT	107645	1	CABLE, NEGATIVE, (NOT SHOWN)
30	105805	2	TIRE ASSEMBLY	102759	4	INSULATOR (NOT SHOWN)
.....	105535	1	TIRE, 18 X 7.50-8	976856	1	TIE, PLASTIC (NOT SHOWN)
.....	104628	1	RIM	58	106188	2	FUEL CAP
.....	912234	1	VALVE STEM				
31	101173	8	LUG NUT, 1/2"				
32	102717	4	SCREW, 5/16-18, SET				
33	107061	1	BELLCRANK				

CASTER ASSEMBLY



ITEM	PART NO.	QTY.	DESCRIPTION
1	107036	1	CASTER FORK
2	106993	1	CASTER TIRE (COMPLETE)
	106995	1	TIRE, 410/350-5, 4 PLY
	106994	1	RIM
	912234	1	VALVE STEM
	102484	2	FLANGE BEARING
	105307	1	ROLLER BRG. 3 1/4
	103300	1	ZERK, 45°
3	105543	1	SPACER
4	101907	1	HCS 1/2C X 5 1/2
5	101331	1	NUT 1/2C, NYLOC

HYDRAULIC KIT



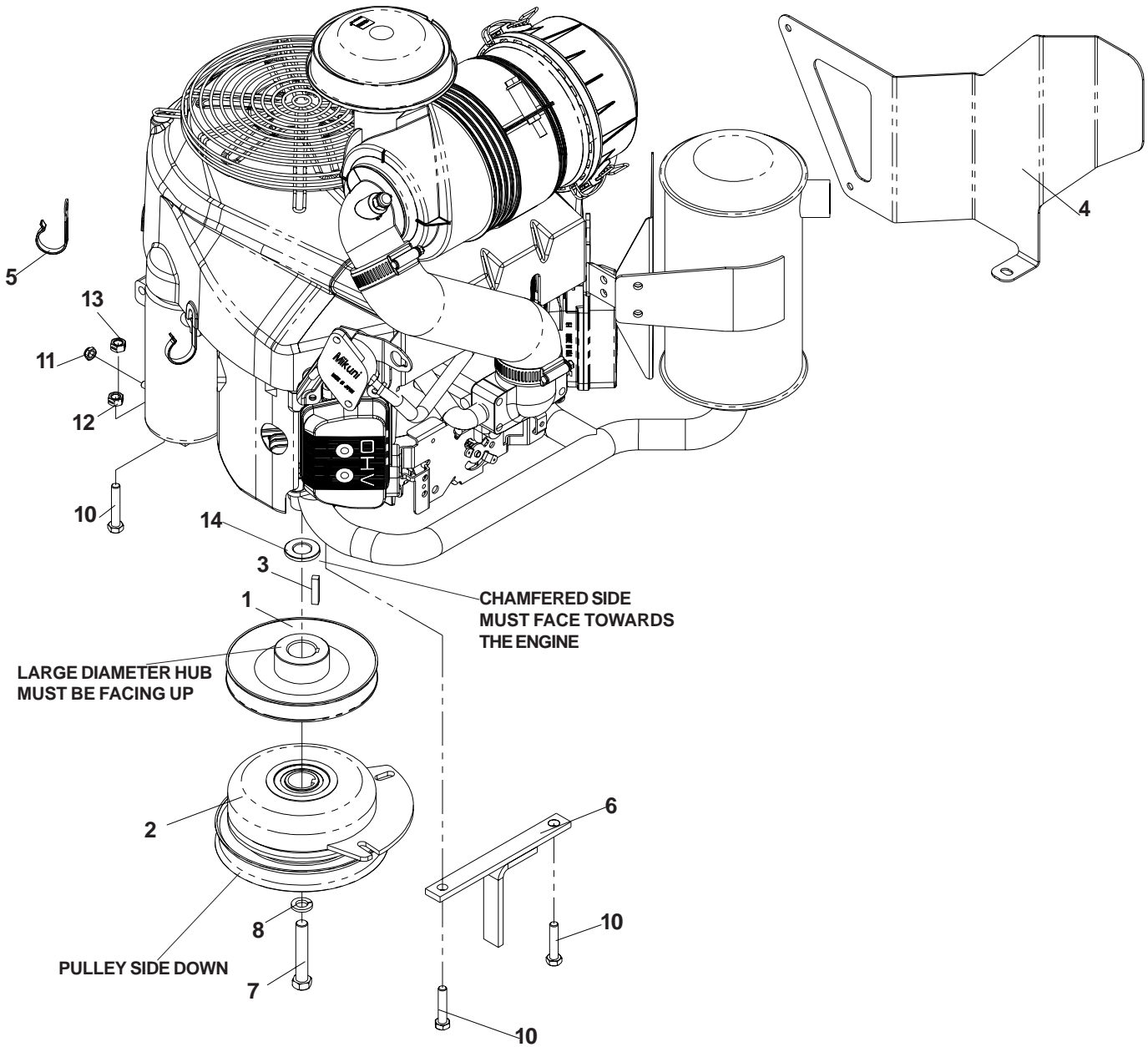
ITEM	PART NO.	QTY.	DESCRIPTION
------	----------	------	-------------

1	103316	2	CONNECTOR, STRAIGHT
2	101239	4	CONNECTOR, STRAIGHT
3	101242	2	ELBOW, 90°, ADJ
4	101238	4	ELBOW, 90°, ADJ
5	105168	1	NUT, CAP, 304-C-6
6	107124	1	HOSE, INLET TEE
7	107027	1	HOSE
8	107123	1	HOSE, TEE
9	107341	2	HOSE 1/2", 22"
10	107125	1	HOSE, 1/2"
11	107342	2	ELBOW, 90°, ADJ
12	107646	1	HOSE, 1/2"

17 HP ENGINE

ITEM	PART NO.	QTY.	DESCRIPTION
1	107077	1	MUFFLER SHROUD
2	105804	1	CLUTCH, 125 FT/LB
3	101995	1	KEY, 1/4" SQ. X 1 1/8"
4	105610	1	PUMP PULLEY
5	976935	1	HCS, 5/16-18 X 1 1/2
6	990669	3	HCS, 5/16-18 X 1 3/4
7	991120	1	HCS, 7/16-20 X 2 1/2
8	108120	1	NUT, 1/4-20, THIN NYLOC
9	990184	4	NUT, 5/16-18, CENTER LOCK
10	107098	3	CLAMP
11	990247	1	LOCK WASHER, 7/16
12	106819	1	CLUTCH TIE DOWN
13	990717	1	NUT, 5/16-18, NYLOC

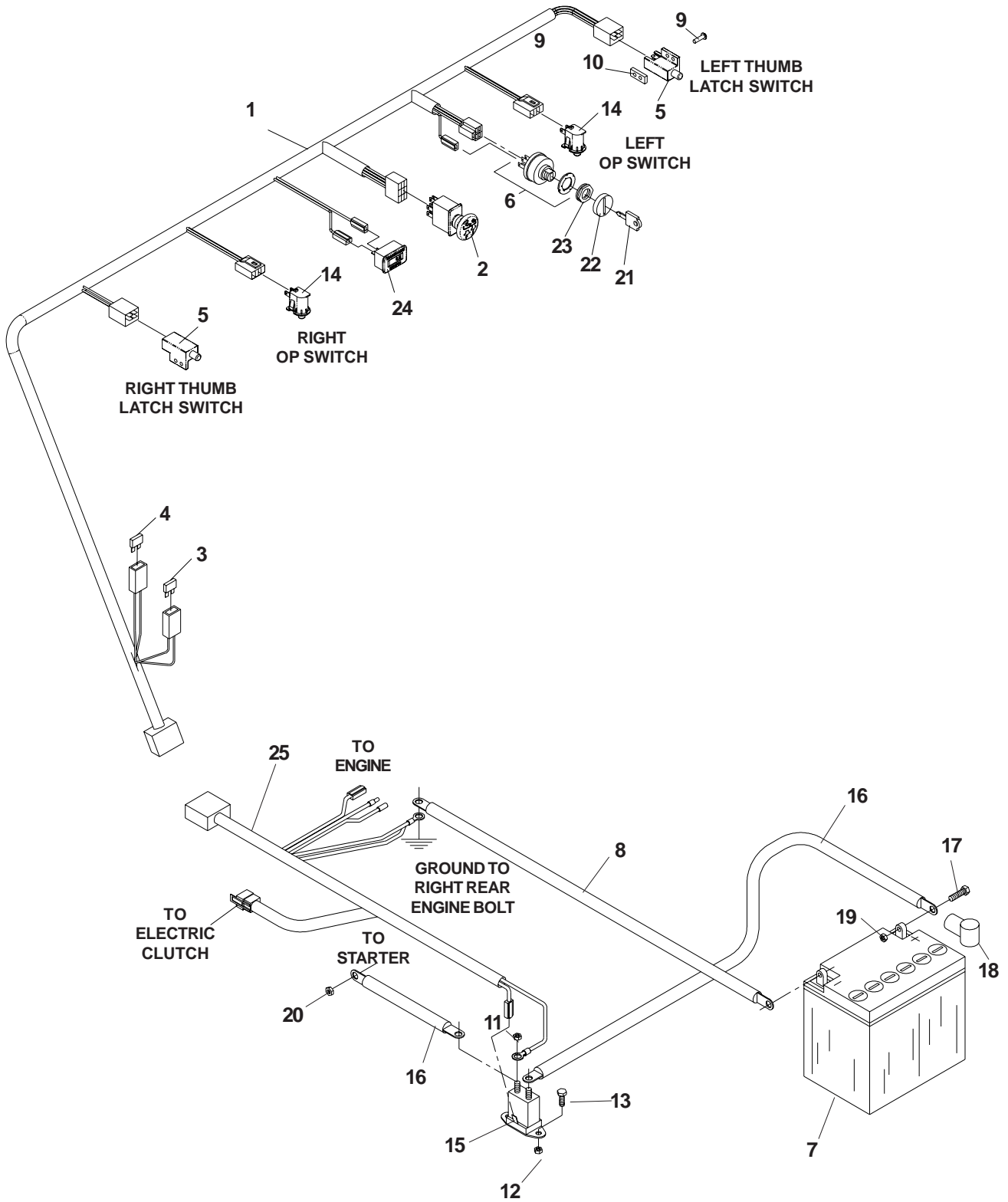
21 HP ENGINE



21 HP ENGINE

ITEM	PART NO.	QTY.	DESCRIPTION
1	105610	1	PULLEY, PUMP
2	109245	1	CLUTCH, 125 FT/LBS
3	101995	1	KEY, 1/4" SQ. X 1 1/8"
4	107057	1	MUFFLER SHROUD
5	107098	3	CLAMP
6	106819	1	TIE DOWN, CLUTCH
7	923388	1	HCS, 7/16-20 X 3
8	990247	1	LOCKWASHER, 7/16
9	976935	1	HCS, 5/16-18 X 1 1/2
10	990669	3	HCS, 5/16-18 x 1 3/4
11	108120	1	NUT, 1/4-20, THIN NYLOC
12	990184	4	NUT, 5/16-18, CENTER LOCK
13	990717	1	NUT, 5/16-18, NYLOC
14	109759	1	SPACER

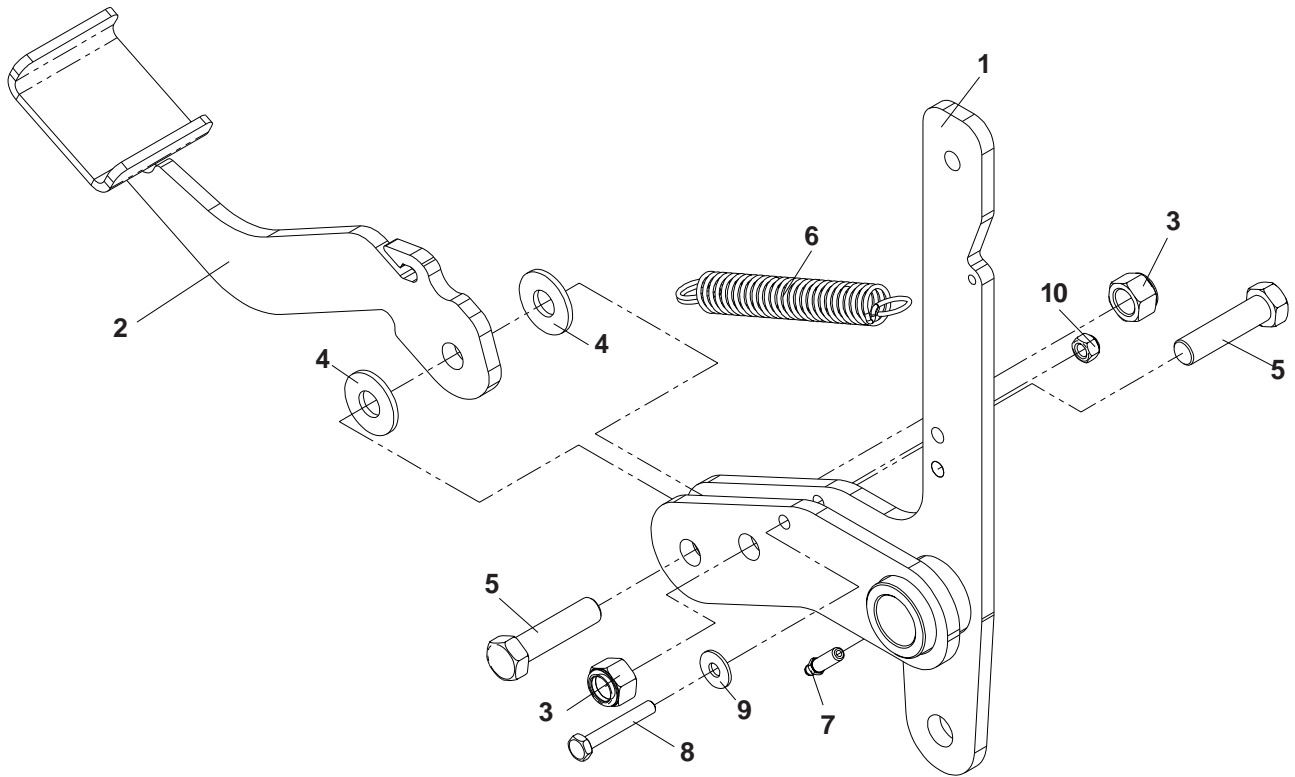
ELECTRICAL COMPONENTS



ELECTRICAL COMPONENTS

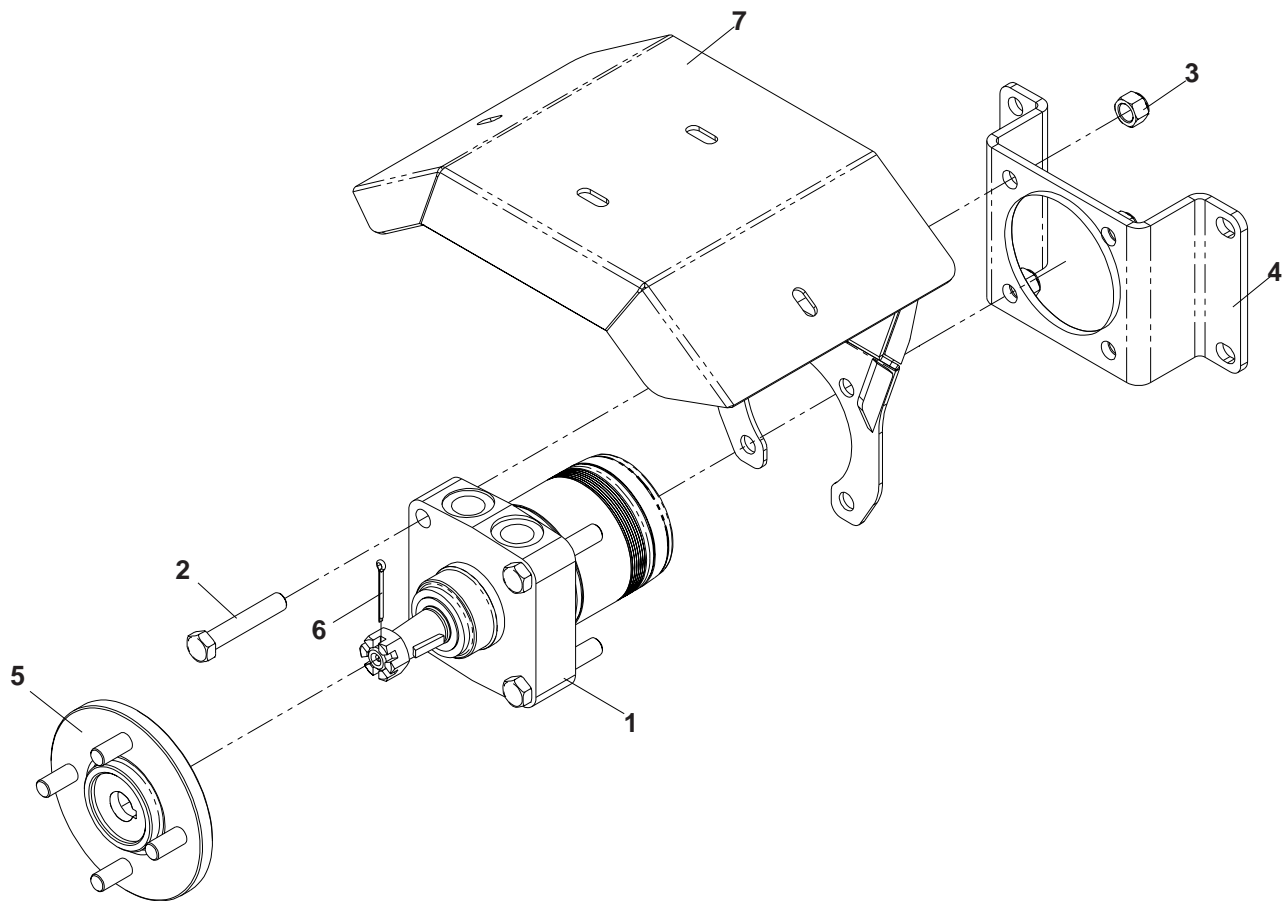
ITEM	PART NO.	QTY.	DESCRIPTION
1	109766	1	WIRING HARNESS
2	101768	1	SWITCH, CLUTCH
3	102086	1	FUSE, 20 AMP
4	101771	1	FUSE, 7.5 AMP
5	101080	2	SWITCH, NC
6	101770	1	SWITCH, IGNITION
7	102463	1	BATTERY
8	107645	1	CABLE, NEGITIVE
9	976952	6	SCREW, #10-24 X 5/8
10	102678	3	NUT PLATE
11	976978	2	NUT, 1/4C
12	990372	2	LOCKNUT, 1/4C
13	990072	2	HCS 1/4C X 5/8
14	109570	1	SWITCH, NC
15	101714	1	SOLENOID
16	103306	2	CABLE, LONG POSITIVE
17	976934	2	HCS 5/16C X 3/4
18	102759	4	INSULATOR
19	990184	2	NUT, 5/16C, CENTERLOCK
20	108120	1	NUT, 1/4C, THIN NYLOC
21	104812	1	KEY, PADDED GRIP
22	103178	1	CAP, IGNITION SWITCH NUT
23	103177	1	NUT, IGNITION SWITCH
24	108016	1	HOURLMETER, LCD, W/FLASH ALERT
25	107649	1	LOWER WIRE HARNESS

DECK LIFT PEDAL



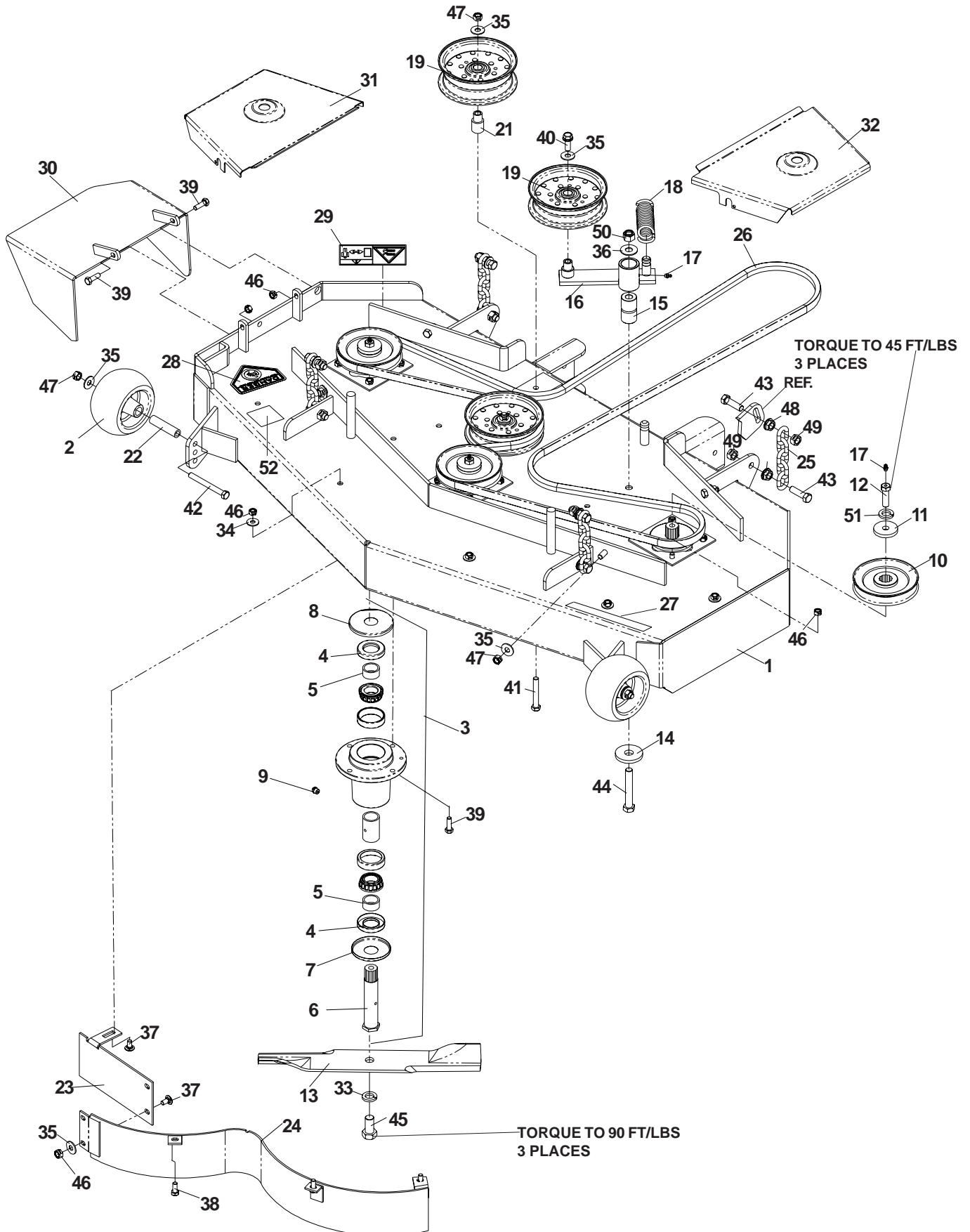
ITEM	PART NO.	QTY.	DESCRIPTION
1	107022	1	LIFTARM
2	107025	1	FOOT LIFT ARM
3	101331	2	NUT, 1/2C, NYLOC
4	990550	2	WASHER, 1/2, FLAT
5	107026	2	BOLT, 1/2C X 2, GR 8
6	916159	1	SPRING
7	104761	1	ZERK, LONG
8	991003	1	BOLT, 1/4C X 1 3/4
9	990598	1	WASHER 1/4, FLAT
10	976978	1	NUT, 1/4C, NYLOC

WHEEL MOTOR ASSEMBLY



ITEM	PART NO.	QTY.	DESCRIPTION
1	103527	1	MOTOR
2	101332	4	BOLT, 1/2C X 2 3/4
3	101331	4	NUT, 1/2C, NYLOC
4	107047	1	WHEEL MOTOR HAT
5	101109	1	HUB, WHEEL
6	990297	1	PIN, COTTER, 1/8 X 1 1/2
7	107045	1	FENDER

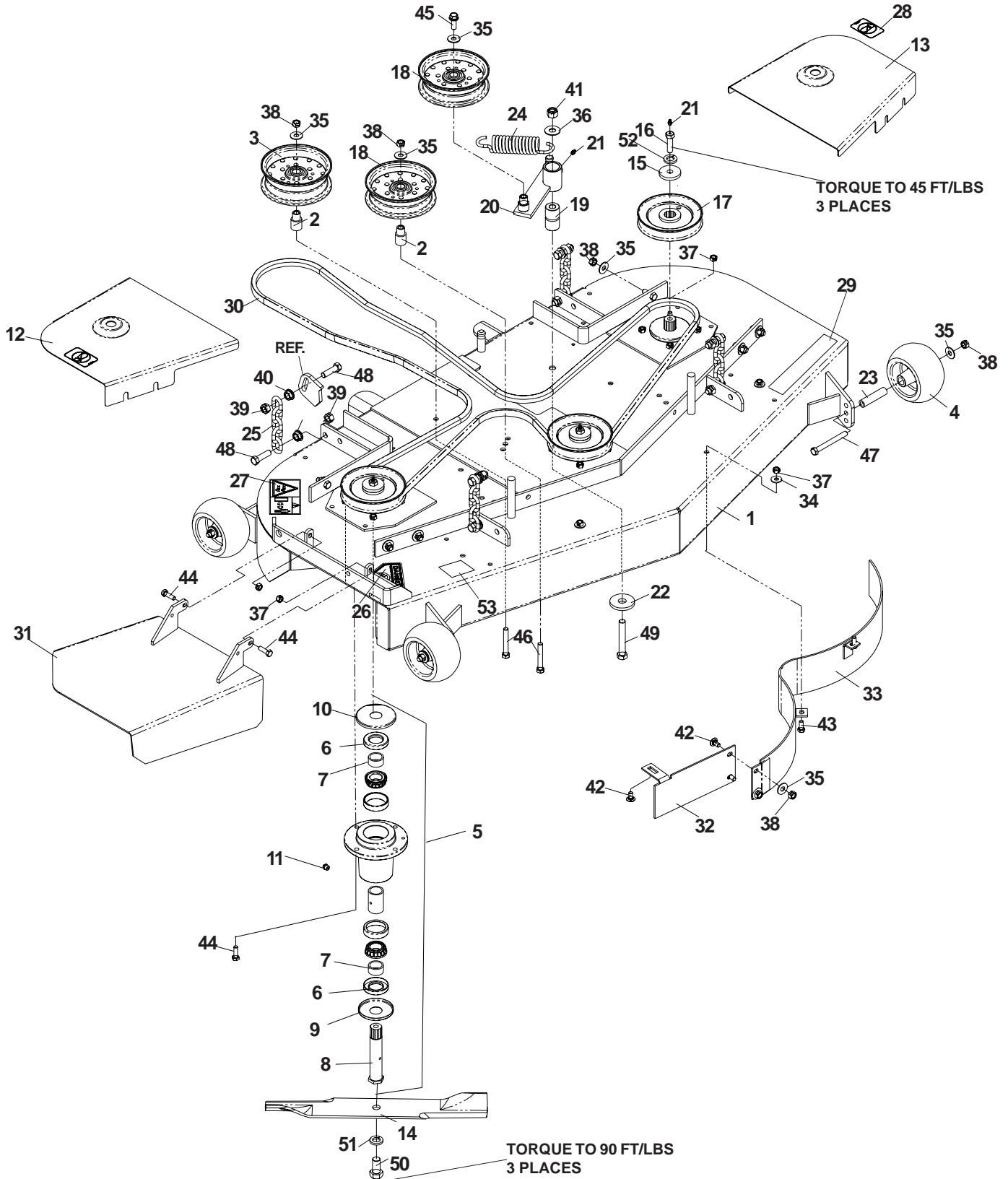
48" DECK



48"DECK

ITEM	PART NO.	QTY.	DESCRIPTION	ITEM	PART NO.	QTY.	DESCRIPTION
1	107675	1	DECK W/DECALS	29	105746	1	DECAL,EURO SEVERING
2	102643	2	ROLLER, ANTI-SCALP	30	107426	1	CHUTE, 48"
3	108773	3	SPINDLE, COMPLETE	31	108903	1	SHIELD, RIGHT
4	108754	2	SHAFT SEAL	32	108905	1	SHIELD, LEFT
5	108758	2	SPACER	33	990333	3	LOCKWASHER, 5/8
6	108760	1	SPINDLE	34	990692	4	WASHER, 5/16
7	108449	1	DUST CAP, BOTTOM	35	990517	11	WASHER, 3/8
8	108450	1	DUST CAP, TOP	36	990550	1	WASHER, 1/2
9	977326	1	GREASE POPET	37	990799	4	RHSNB, 5/16-18 X 5/8
10	107276	3	PULLEY	38	976934	2	HCS, 5/16-18 X 3/4
11	106504	3	WASHER, HEAVY	39	990209	14	HCS, 5/16-18 X 1
12	108766	3	HCS, 7/16-20 X 1 1/2	40	990582	1	HCS, 3/8-16 X 1,WHIZLOCK
13	100340	3	BLADE, 16 1/4"	41	990637	2	HCS, 3/8-16 X 2 1/2
14	102243	1	SUPPORT WASHER	42	102754	2	HCS, 3/8-16 X 3 1/2
15	103427	1	BUSHING, PIVOT	43	101175	8	HCS, 7/16-14 X 1 1/2
16	103230	1	IDLER ARM	44	103433	1	HCS, 1/2-13 X 3 1/4
17	976998	4	ZERK	45	103299	3	HCS, 5/8-18 X 1 1/4
18	103256	1	SPRING	46	990184	20	NUT, 5/16-18,CENTER LOCK
19	103257	3	IDLER PULLEY	47	990546	8	NUT, 3/8-16,CENTER LOCK
21	103295	2	IDLER BUSHING	48	102582	8	NUT, 7/16-14,WHIZLOCK
22	102698	2	BUSHING	49	990839	8	NUT, 7/16-14,CENTER LOCK
23	105444	1	BAFFLE, CENTER	50	101331	1	NUT, 1/2-13, NYLOC
24	105448	1	BAFFLE, MAIN	51	990247	3	LOCKWASHER, 7/16
25	102641	4	LIFT CHAIN	52	101369	1	DECAL, 48
26	103240	1	BELT, DECK				
27	102063	1	DECAL, COMMERCIAL				
28	913010	1	DECAL, CPSC				

52" DECK



52"DECK

ITEM	PART NO.	QTY.	DESCRIPTION	ITEM	PART NO.	QTY.	DESCRIPTION
1	107676	1	DECK W/DECALS	28	105743	2	DECAL,EURO NO STEP
2	103295	2	IDLER BUSHING	29	102063	1	DECAL, COMMERCIAL
3	103258	1	PULLEY, IDLER (TALL)	30	107095	1	BELT
4	102643	3	ROLLER, ANTI-SCALP	31	107090	1	CHUTE, DISCHARGE
5	108773	3	SPINDLE, COMPLETE	32	105453	1	BAFFLE, CENTER
6	108754	2	SEAL, SHAFT	33	105457	1	BAFFLE, MAIN
7	108758	2	SPACER	34	990692	3	WASHER, 5/16
8	108760	1	SPINDLE	35	990517	14	WASHER, 3/8
9	108449	1	DUST CAP, BOTTOM	36	990550	1	WASHER, 1/2
10	108450	1	DUST CAP, TOP	37	990184	17	NUT, 5/16-18,CENTER LOCK
11	977326	1	GREASE POPET	38	990546	13	NUT, 3/8-16,CENTER LOCK
12	108909	1	SHIELD, RIGHT	39	990839	8	NUT, 7/16-14,CENTER LOCK
13	108911	1	SHIELD, LEFT	40	102582	8	NUT, 7/16-14, WHIZ
14	100341	3	BLADE, 18"	41	101331	1	NUT, 1/2-13, NYLOC
15	106504	3	WASHER, HEAVY	42	990799	3	RHSNB, 5/16-18 X 5/8
16	108766	3	HCS, 7/16-20 X 1 1/2	43	976934	2	HCS, 5/16-18 X 3/4
17	107277	3	PULLEY	44	990209	14	HCS, 5/16-18 X 1
18	103257	2	IDLER PULLEY	45	990582	1	HCS, 3/8-16 X 1, WHIZ
19	103427	1	BUSHING, PIVOT	46	990637	2	HCS, 3/8-16 X 2 1/2
20	103230	1	IDLER ARM	47	102754	3	HCS, 3/8-16 X 3 1/2
21	976998	4	ZERK	48	101175	8	HCS, 7/16-14 X 1 1/2
22	102243	1	SUPPORT WASHER	49	103433	1	HCS, 1/2-13 X 3 1/4
23	102698	3	BUSHING	50	103299	3	HCS, 5/8-18 X 1 1/4
24	105192	1	SPRING	51	990333	3	LOCKWASHER, 5/8
25	102641	2	LIFT CHAIN	52	990247	3	LOCKWASHER, 7/16
26	913010	1	DECAL, CPSC	53	101099	1	DECAL, 52
27	105746	1	DECAL,EURO SEVERING				

YAZOO/KEES