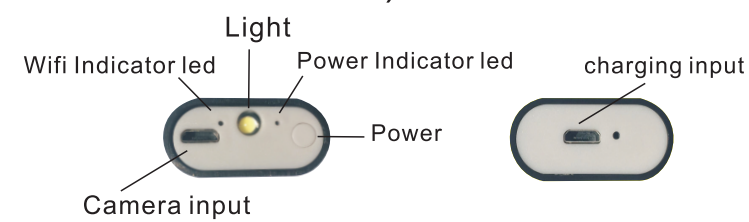




### Features:

Resolution: HD640\*480, 1280\*720  
View angle: 70°  
Focal distance: 4-6cm(the best)  
Camera Head Diameter 8.0mm  
Light: 8 adjustable white LED lights  
Waterproof level: Ip67  
Frequency: 2.412-2.462MHz  
Transmission distance:0-30M  
Capacity:750mah(working110 Minutes)  
Support system: ios/Android/Windows  
(Vista/XP/Win7/Win8/)/Mac



### How to use on Smartphone?

### 1.Install mobile phone software.

For iPhone user, two ways to download software:

- ① searching“moqo view”in APP Store.
- ② by scanning the QR code below



### IOS QR

For Android user,two ways to download software:

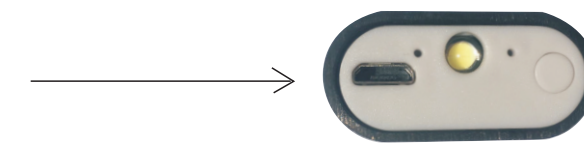
- ① searching“moqo view”in Google Play.
- ② by scanning the QR code below ,If you can not use Google, scan Second QR code



### Android QR

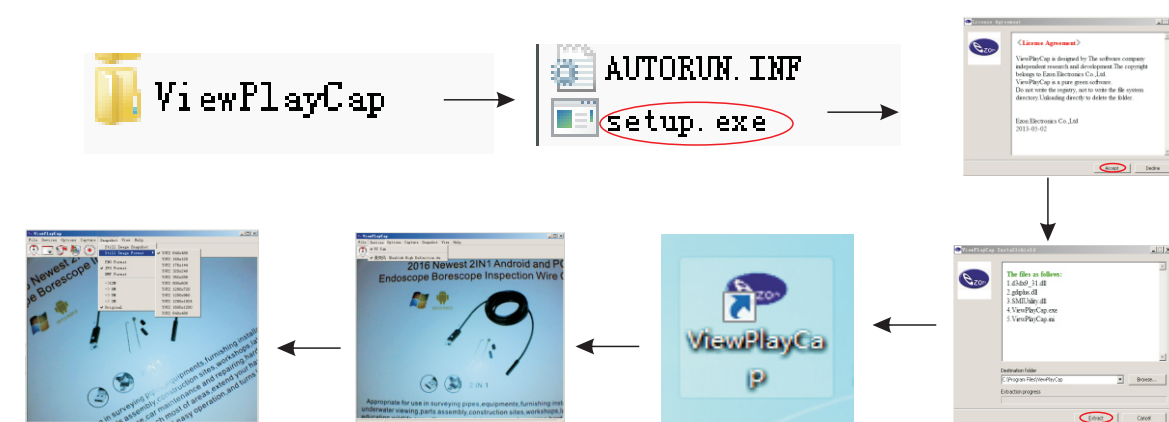


### 2.Plug in camera

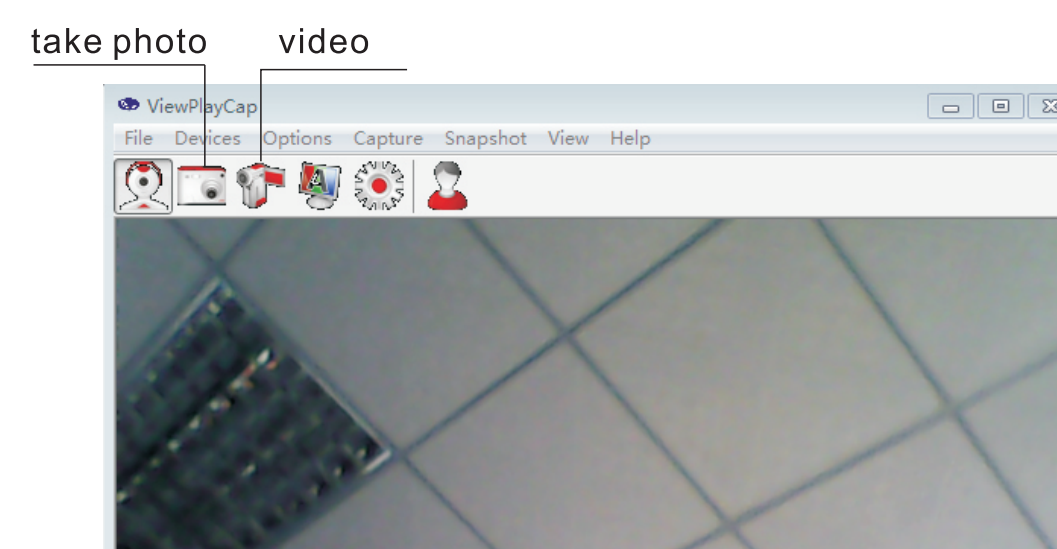


- ① For MacBook OS, please use "Photo Booth" "QuickTime Player" "VLC(VideoLan Client)"

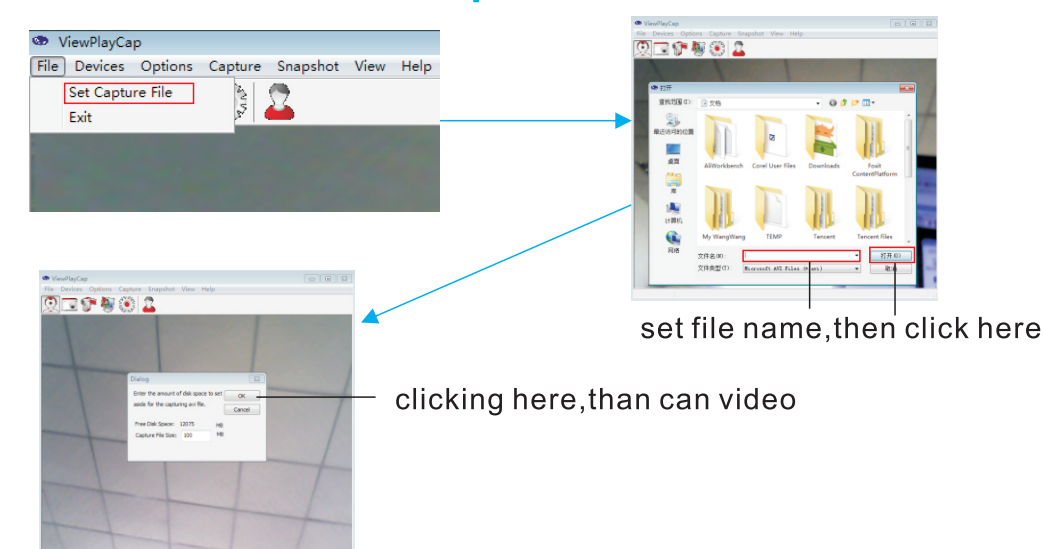
- ② For windows user, please doenload software by [link:www.kkmoom.com/pc.rar](http://link:www.kkmoom.com/pc.rar)



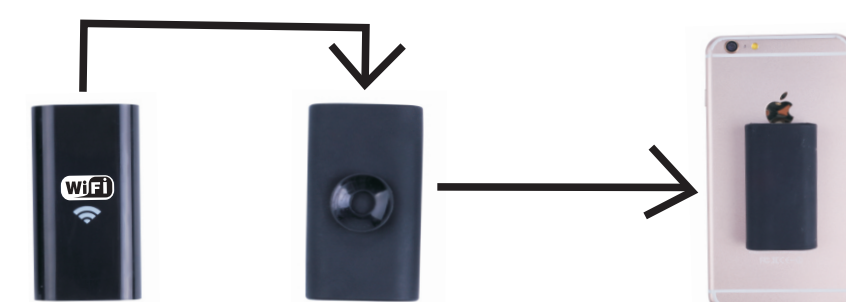
Open the ViewPlayCap ,and then choosed the USB.2.0 PC Camera in the Device



### How to set the path for the video file?



Paste the wifi box on the phone by using the silica sucker.



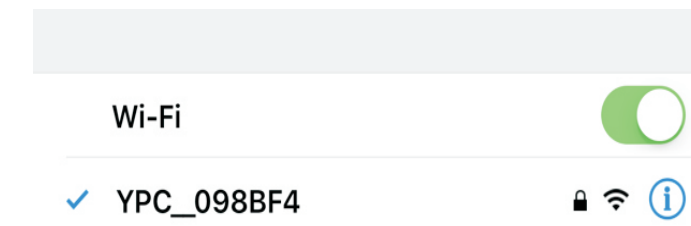
### Package Includes:

- 1\* Mini USB Endoscope
- 1\* Wifi unit
- 1\* protective sleeve with sucker
- 1\* Small hook
- 1\* Magnet
- 1\* Side view mirror
- 1\* fixed set
- 1\* Micro to USB connector
- 1\* Manual

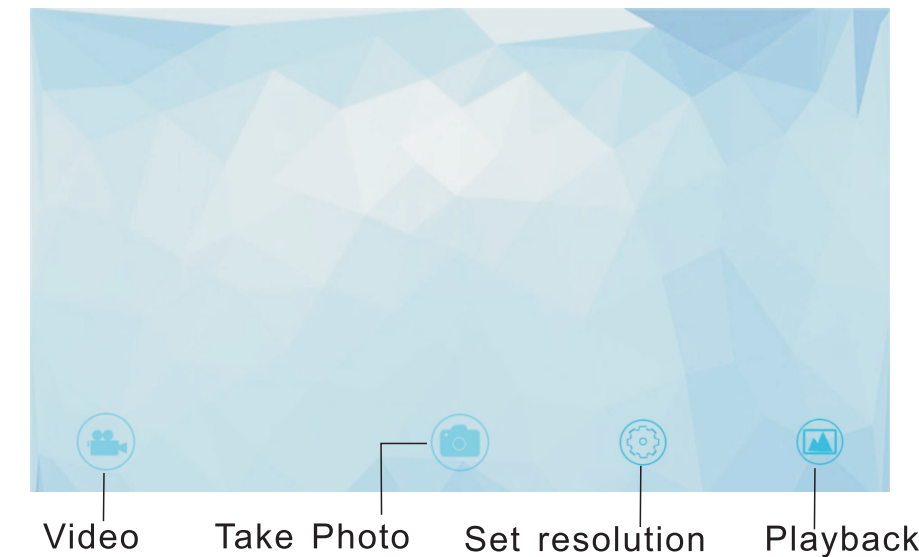


3.To turn on the Wifi unit just press the power switch once, and the green light will on.then you can search the Wifi signal on your phone

4.Click Phone Setting > WLAN > Scan, search Wifi Name “ypc-xxx” , input code “12345678” and connect.



5.Afterthe WLAN is connected successfully, click 'MOQO' to use the device. The endoscope will work.



### How to turn off the device?

Press the power butoon quickly 2 times to turn off the device.

### How to control the light on and off?

Press Long the power butoon 3 seconds, light will put on or off.

### How to charge the device?

Charging the device with the power of the 5V 1A or 5V 500MA. When fully charged,it can be used about 110 Minutes. Bule LED lighted when charging ,and goes out when fully charged. Charging fully needs 2 hours.

### How to use on PC?

1. Via PC,using usb to Micro USB F Cable



### FCC Statement

This equipment has been tested and found to comply with the limits for a Class B digital device, pursuant to Part 15 of the FCC Rules. These limits are designed to provide reasonable protection against harmful interference in a residential installation. This equipment generates uses and can radiate radio frequency energy and, if not installed and used in accordance with the instructions, may cause harmful interference to radio communications. However, there is no guarantee that interference will not occur in a particular installation. If this equipment does cause harmful interference to radio or television reception, which can be determined by turning the equipment off and on, the user is encouraged to try to correct the interference by one or more of the following measures:

- Reorient or relocate the receiving antenna.
- Increase the separation between the equipment and receiver.
- Connect the equipment into an outlet on a circuit different from that to which the receiver is connected.
- Consult the dealer or an experienced radio/TV technician for help.

This device complies with part 15 of the FCC Rules. Operation is subject to the following two conditions:

(1) This device may not cause harmful interference, and (2) this device must accept any interference received, including interference that may cause undesired operation. Changes or modifications not expressly approved by the party responsible for compliance could void the user's authority to operate the equipment.