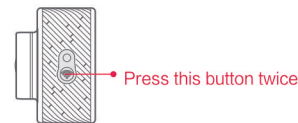


正面:

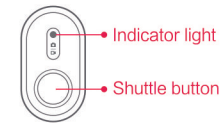


Yi Bluetooth Remote Control

1. Pairing the Bluetooth Remote Control with Yi Action Camera



1. Power on the Yi Action camera.
2. Press the Wi-Fi button twice in quick succession on the side of the camera. You will hear a short beep and a blue light will appear.
3. The camera now enters into a Bluetooth device pairing state.



4. Press the Shutter button on the Bluetooth remote control until you hear a short beep. You will see the indicator light turns blinking blue when you successfully paired with the camera.

If the indicator light turns red, this indicates the camera has failed paired with the Bluetooth remote control.

2. Take photo/Capture video

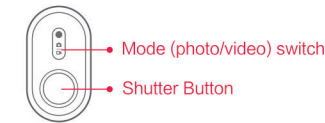


Photo Mode: Press the Shutter button once to take picture.
Video Mode: Press the Shutter button once to start/stop recording.

Reminder: Press the Mode button once to switch between photo mode and video mode.

Battery Replacement



① Remove the silicone protective cover by pulling both side away from the unit



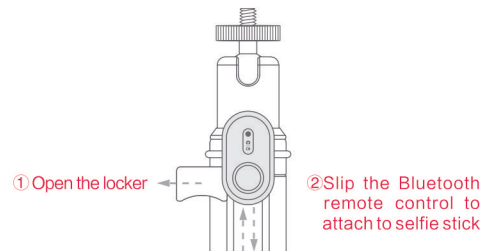
② With the backside of the unit facing up

Use a small coin to turn the cap the clockwise until the cap pops out.

Tips: Use one coin to rotate the cap.

背面:

Attaching the Bluetooth remote control to Yi Selfie stick



Tips: Yi Selfie Stick is sold separately.

Thank you for choosing Yi Bluetooth Remote Control.
Before using the product, please read this user guide.

This product complies with RoHS environmental requirements: Currently there isn't international technology able to reduce the lead on electronic alloys, optical glass and steel.

This device complies with Part 15 of the FCC Rules / Industry Canada licence-exempt RSS standard(s). Operation is subject to the following two conditions: (1) this device may not cause harmful interference, and (2) this device must accept any interference received, including interference that may cause undesired operation.

Le présent appareil est conforme aux CNR d'Industrie Canada applicables aux appareils radio exempts de licence. L'exploitation est autorisée aux deux conditions suivantes : (1) l'appareil ne doit pas produire de brouillage, et (2) l'utilisateur de l'appareil doit accepter tout brouillage radioélectrique subi, même si le brouillage est susceptible d'en compromettre le fonctionnement.

Changes or modifications not expressly approved by the party responsible for compliance could void the user's authority to operate the equipment.

This equipment has been tested and found to comply with the limits for a Class B digital device, pursuant to part 15 of the FCC Rules. These limits are designed to provide reasonable protection against harmful interference in a residential installation. This equipment generates and can radiate radio frequency energy and, if not installed and used in accordance with the instructions, may cause harmful interference to radio communications. However, there is no guarantee that interference will not occur in a particular installation. If this equipment does cause harmful interference to radio or television reception, which can be determined by turning the equipment off and on, the user is encouraged to try to correct the interference by one or more of the following measures:

- Reorient or relocate the receiving antenna.
- Increase the separation between the equipment and receiver.
- Connect the equipment into an outlet on a circuit different from that to which the receiver is connected.
- Consult the dealer or an experienced radio/TV technician for help.

Under Industry Canada regulations, this radio transmitter may only operate using an antenna of a type and maximum (or lesser) gain approved for the transmitter by Industry Canada. To reduce potential radio interference to other users, the antenna type and its gain should be so chosen that the equivalent isotropically radiated power (e.i.r.p.) is not more than that necessary for successful communication.

Conformément à la réglementation d'Industrie Canada, le présent émetteur radio peut fonctionner avec une antenne d'un type et d'un gain maximal (ou inférieur) approuvé pour l'émetteur par Industrie Canada. Dans le but de réduire les risques de brouillage radioélectrique à l'intention des autres utilisateurs, il faut choisir le type d'antenne et son gain de sorte que la puissance isotrope rayonnée équivalente (p.i.r.e.) ne dépasse pas l'intensité nécessaire à l'établissement d'une communication satisfaisante.

Yi Bluetooth Remote Control

Product Name: Yi Bluetooth Remote Control
Material: Silicone, plastic alloy
Product Type: XYLY01
Manufacturer: Xiaoyi Technology Co.,Ltd.
Address: 6/F, Building E, No.2889 Jinke Road, Pudong District, Shanghai, China.
Tel: +086-021-6165 6722

