

Smart Band

M99



Thank you for choosing this product. Please read this manual carefully before using it.

The hardware platform of the mobile phone system needs to meet the conditions:

Version IOS 8.0 and above



Version Android 4.4 and above

Users' express manual

1. Download I BAND

Only the application supports can the bracelet be connected to the phone. Before downloading the APP, please check the requirements of the hardware platform of the mobile phone system.

Search method 1: Scan the QR code to download

The download link in the page may not be able to be open by using WeChat and other scanning tools. Please copy it to the browser and then open!

Search method 2: Search to download

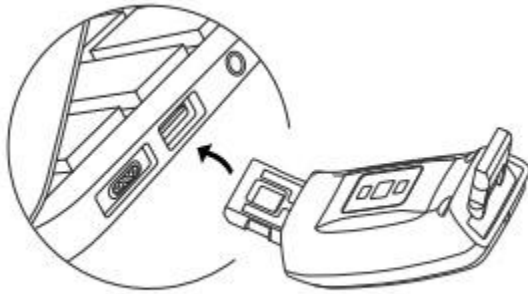
Search for "I BAND" in the APP Store or Android App Store and download directly from your phone:

Android App Store recommends: Google Play Store and 360 mobile assistant/ Wandoujia /Yingyongbao /baidu assistant, etc



1. Activation and charging of the product

Please make sure the power is normal while using for the first time (the charging method is shown in the diagram below, and the DC interface can be charged directly by USB directly, and 5v-100ma is required. Please do not use the quick charger for charging).



3) Long press to start up

Enter the main standby interface. The four-set main interface UI is set in the bracelet, and in the main standby interface, long press the touch button for 2S and the next standby interface will be automatically switched.



a. Pedometer during exercise

Accurately calculate the number of daily exercise steps, walking time, exercise mileage and calorie consumption.

b. Sleep monitoring

Accurately monitor the quality of sleep every day and calculate the time of deep sleep and light sleep.

c. Health measurement

Accurately monitor the current health information, including heart rate, blood pressure and blood oxygen (the data are for reference only, not for medical use)

Enter the heart rate test interface. Long press the touch key for 2S to enter the monitoring mode.

d. Alarm / message reminder

Alarm clock, phone, QQ, WeChat, SMS, sedentariness reminder and anti-lost reminder

e. Remote control camera

Support the mobile phone to take photos remotely

f. Hang up the phone

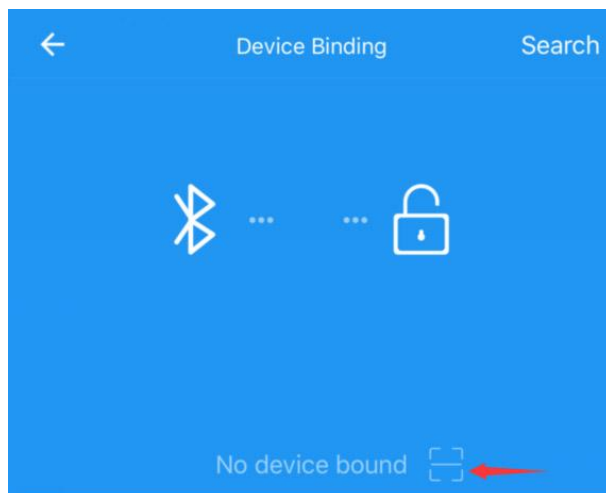
Long pressing of the touch button of the bracelet can hang up the phone.

3) Instruction of the starting and closing the bracelet.

- a. Long press the touch button to start up.
- b. If the long press fails to start up, please confirm whether the battery is electrified
- c. If the battery is dead, please use USB for charging.
- d. Device binding

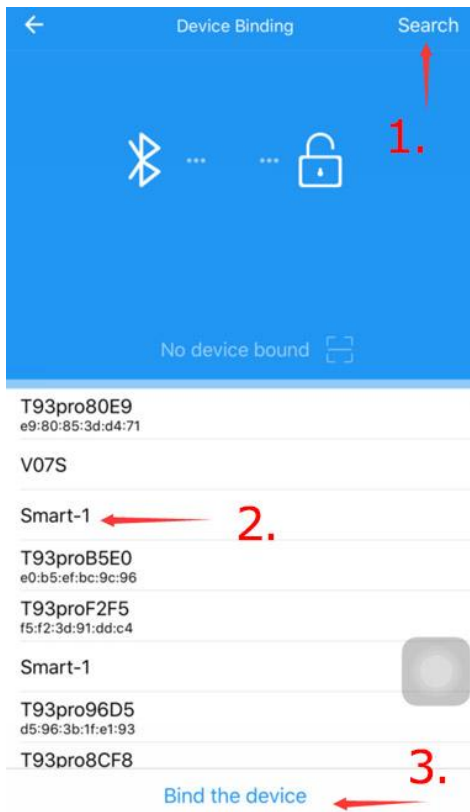


Method 1: In the pedometer interface, long pressing the touch key will produce a QR code (when the bracelet and the phone is connected, then the QR code will not be open by long pressing of the button). Open the QR code and scan it in the APP for binding.



Method 2:

Inside the APP, enter the binding device interface and follow the icon to bind the bracelet.



Introduction and operation instructions of the bracelet function interface



The main interface. After the APP is synchronized, the current time and date will be displayed on it.



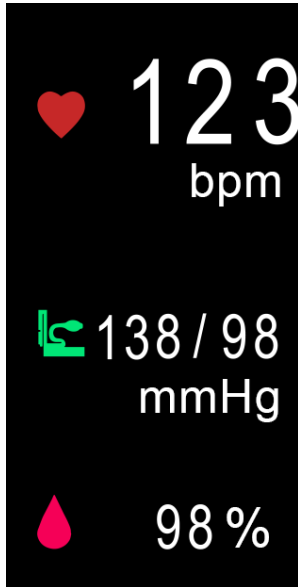
Pedometer interface. Record the current exercise data. Enter the QR code interface by the long press of the touch button. Press touch button quickly to enter the next functional interface.



Movement mode. Enter the movement mode to choose the interface by the long press of the touch button. There are 2 modes to choose from. The first is riding mode and the second is running mode. Enter the movement mode by the long press of the touch button. After selecting the riding mode, long press the touch key for 2S and then enter the state of riding mode. If you need to exit, long press the touch key 2S to exit the current mode. Short press the touch button can switch. If you need to return to the previous menu, long press the touch button in the "back" interface



Heart rate interface. Long press the touch key for 2S and then enter the test interface of heart rate, blood pressure and blood oxygen.



The data are the value of heart rate, blood pressure and blood oxygen.

The dynamic heart rate will be measured automatically for half an hour and the data will be synchronized to the APP in real time. Manual test heart rate will not be synchronized to the APP.



Sleep monitoring interface. Record the sleep of the day before. Sleep monitoring is from 9pm to 9am. After 9:00 am, the data will be updated to APP, and the APP will record the current data and keep it



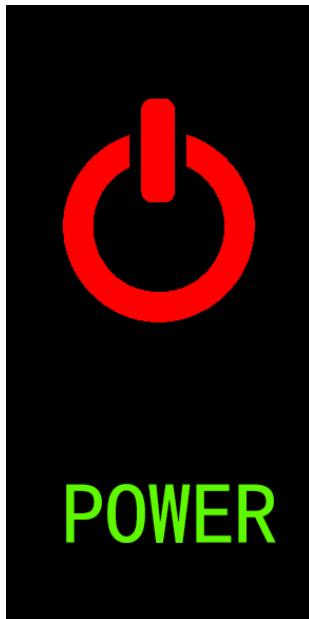
This alarm clock screen shows the reminder time.



Find the cell phone. After binding the bracelet, long press this button and the phone will ring.



Version information of the machine. Long press this interface, and then the version number of this machine will be introduced.

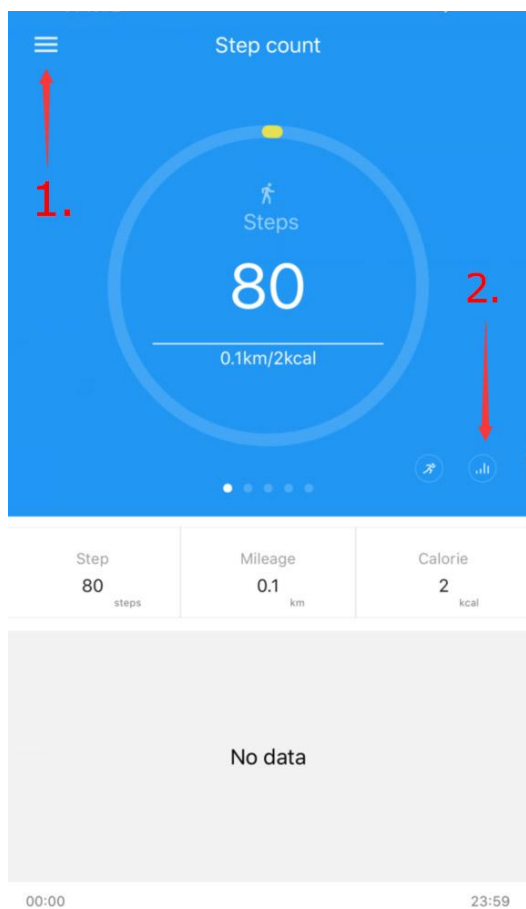


Press the touch button for 3 seconds and the bracelet will be turned off

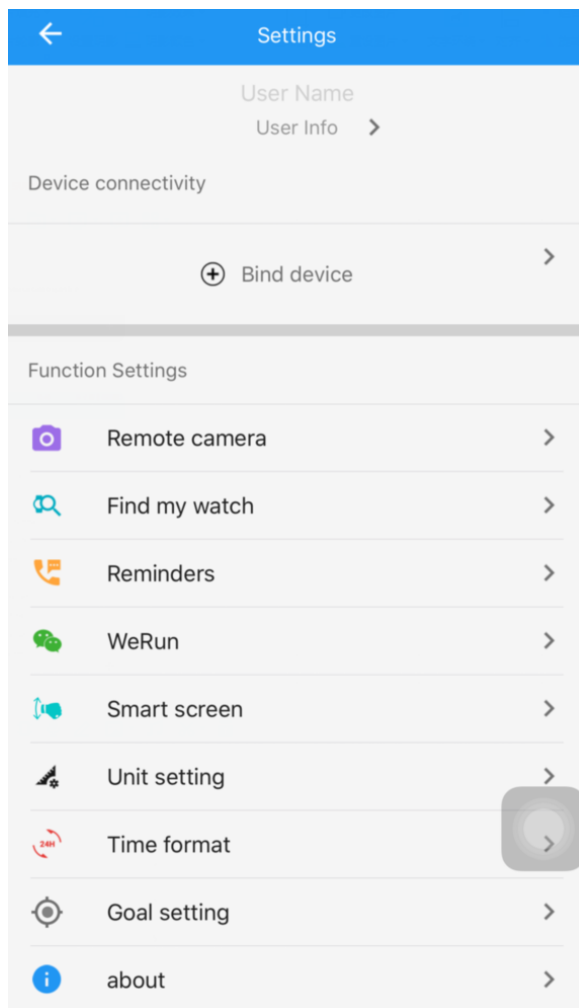
Introduction to APP Settings

a. Enter the interface of the bracelet APP and the function menu button can be seen in the upper left corner.

(1. Enter the function menu interface, 2. View historical data)



b. After entering the Settings interface, you can enter the corresponding function setting interface.



On this function interface, there are remote control camera, bracelet finding, reminder function, flip bright screen, unit settings, time format, target settings and the interface software on the bracelet.

Among them, you can set up phone alerts, SMS reminders, SMS, sedentariness reminder, alarm alerts, anti-lost reminder and social software reminders after entering the reminder function.

7) Notes for the use of the bracelet

- a. The bracelet supports IOS7.1 system or above and Android 4.4 system, a phone or tablet device with Bluetooth 4.0, not all mobile device models. Please refer to the actual conditions.
- b. The inside of this product is precision parts. Please do not drop the product and impact with the hard object, otherwise the machine surface or hardware will be damaged.
- c. Please don't separate the machine without permission.
- d. Do not throw the product into the fire as it may cause an explosion.
- e. Please note that if you are sensitive skin, you may feel uncomfortable while wearing it.
- f. When the USB of the bracelet is touched with water, please wipe it dry before charging. Otherwise, it will cause malfunction and corrosion to the charging contact.

g. In a strong electrostatic environment, the bracelet may fail. For example, there will be no display or display abnormally. Do not use it in the environment of high voltage to avoid static electricity interference.

h. Only when the lens and case remain intact can it be waterproof. Violent disassembly or installation may result in waterproofing failure.

i. This product is waterproof, but only for cold water. Hot water will lead to water mist in the lens.

(Do not wear it while taking a hot shower or swimming to avoid damage.)

Frequently Asked Questions FAQ

Can't find the bracelet when pairing?

Please confirm that the Bluetooth of your mobile phone has been switched on and the phone is in the "support range".

When pairing, make sure the distance between the bracelet and the phone is within 0.5m. After pairing, the distance of the range of the Bluetooth communication is within 10m.

Please check whether the bracelet has power. Please contact us if it is still unresolved after the charging.

Occasionally a Bluetooth connection does not work?

Occasionally, an exception occurs when some phones' Bluetooth service is restarted, which will result in such situation; usually, after re-opening the phone or restarting the phone, you can establish a normal connection.

Statement of toxic and hazardous substances in electronic information products

This product complies with the standards of EU ROHS, referring to the instructions IEC 62321 and the EU ROHS, instructions of 2011/65 / EU and its revised directives.

Basic parameters

Battery capacity: 90mAh

The weight of a single machine: 40g

Bluetooth version: BLE4.0

Waterproof grade: life waterproof

Duration of standby: 7-10 days

FCC Warning:

This equipment has been tested and found to comply with the limits for a Class B digital device, pursuant to part 15 of the FCC Rules. These limits are designed to provide reasonable protection against harmful interference in a residential installation. This equipment generates, uses and can radiate radio frequency energy and, if not installed and

used in accordance with the instructions, may cause harmful interference to radio communications. However, there is no guarantee that interference will not occur in a particular installation. If this equipment does cause harmful interference to radio or television reception, which can be determined by turning the equipment off and on, the user is encouraged to try to correct the interference by one or more of the following measures:

- Reorient or relocate the receiving antenna.
- Increase the separation between the equipment and receiver.
- Connect the equipment into an outlet on a circuit different from that to which the receiver is connected.
- Consult the dealer or an experienced radio/TV technician for help.

Caution: Any changes or modifications to this device not explicitly approved by manufacturer could void your authority to operate this equipment.

This device complies with part 15 of the FCC Rules. Operation is subject to the following two conditions: (1) This device may not cause harmful interference, and (2) this device must accept any interference received, including interference that may cause undesired operation.

The device has been evaluated to meet general RF exposure requirement. The device can be used in portable exposure condition without restriction.