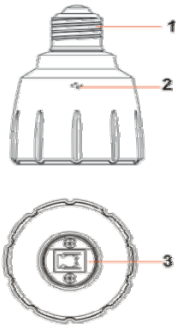


# User's Guide (Smart Bulb Holder)

FCC ID:S7JSH36

Model:SH36

## 1. Smart Bulb Holder



1. Screw plug

2. shell

3. Screw shell

## 2. Getting Started

To configure your Smart Bulb Holder, you need the following:

- Available wireless network (Wi-Fi Router)
- Smart phone (or tablet)
- Common light bulb connected to Smart Bulb Holder

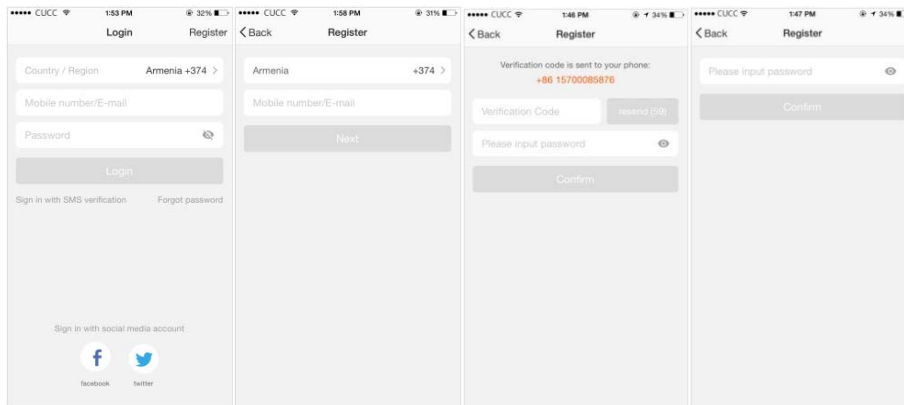
Use your phone to scan the QR code below or search "Tuya smart" in application market to download and install the App



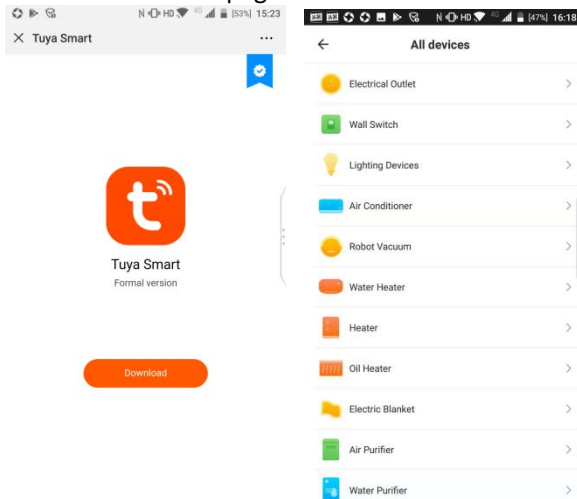
**Step 1:** Registration and login "Tuya smart" APP.

If you don't have the account of "Tuya smart" APP, register an account or sign in with cellphone number + verification code. This page describes the Registration process.

1. Tap "Register" in the upper right (pic 1)
2. The system automatically determines your country / area. You can also select your country code by yourself. Enter the cellphone number/E-mail and tap "Next" (pic 2)
3. If you enter the mobile cellphone number, enter the verification code in the message (pic 3), and enter the password, tap "Confirm" to finish your registration.
4. If you enter the E-mail, enter the password (pic 4), tap "Confirm" to finish your registration.

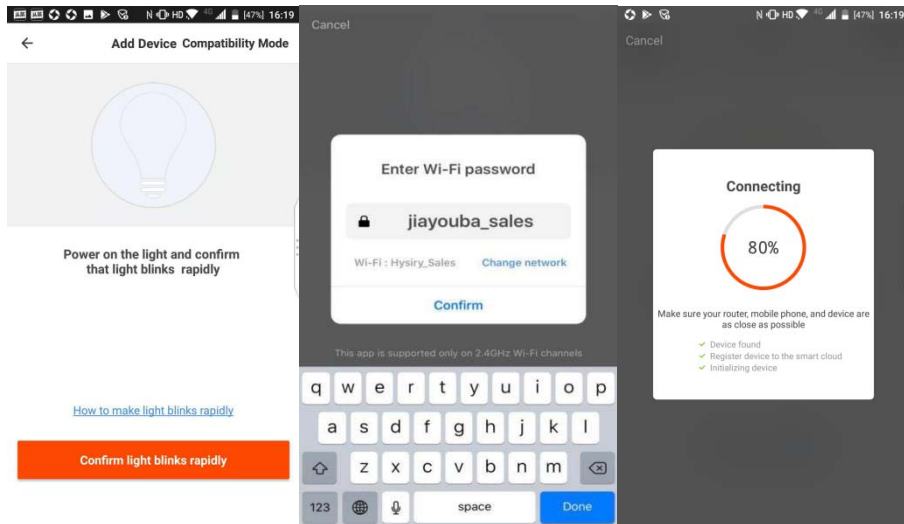


Make sure your phone is connected to WiFi in your home. Click "+" in the upper right corner of the homepage and select "Electrical outlet" from the device type.

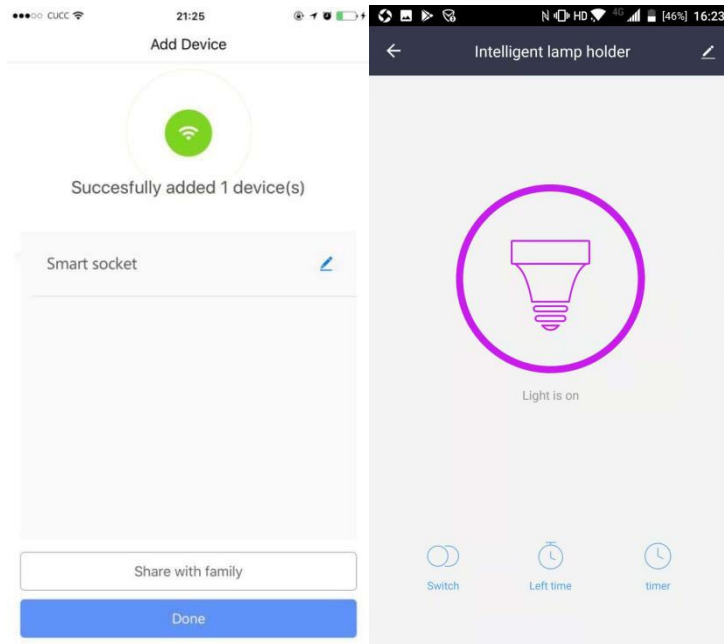


**Step 2:** connect to the power supply and press the switch 3 times until the lamp on the converter flashes rapidly.

**Step 3:** Enter your WiFi password for your phone and click "Confirm" to enter the page of the search device.

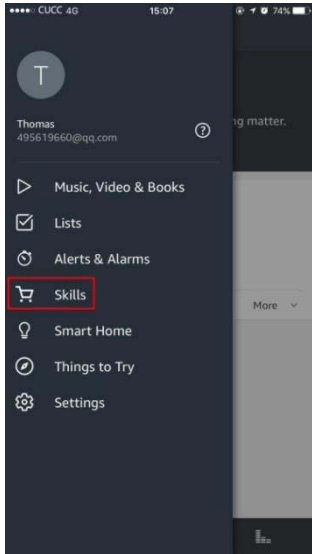


**Step 4:** Enter the device page, then complete the configuration

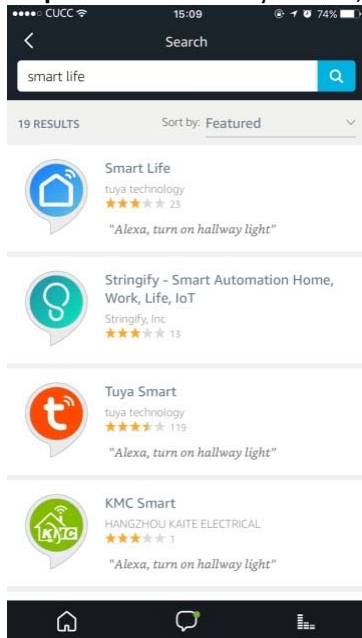


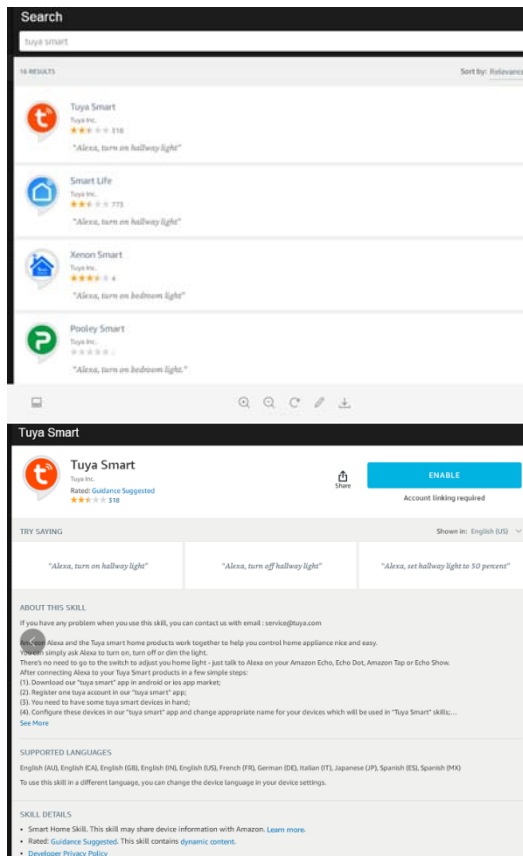
How to use Amazon Echo to control your Smart devices?

**Step 1:** Open the "Amazon Alexa" APP, then find the "Skills" button on the menu. Press it.

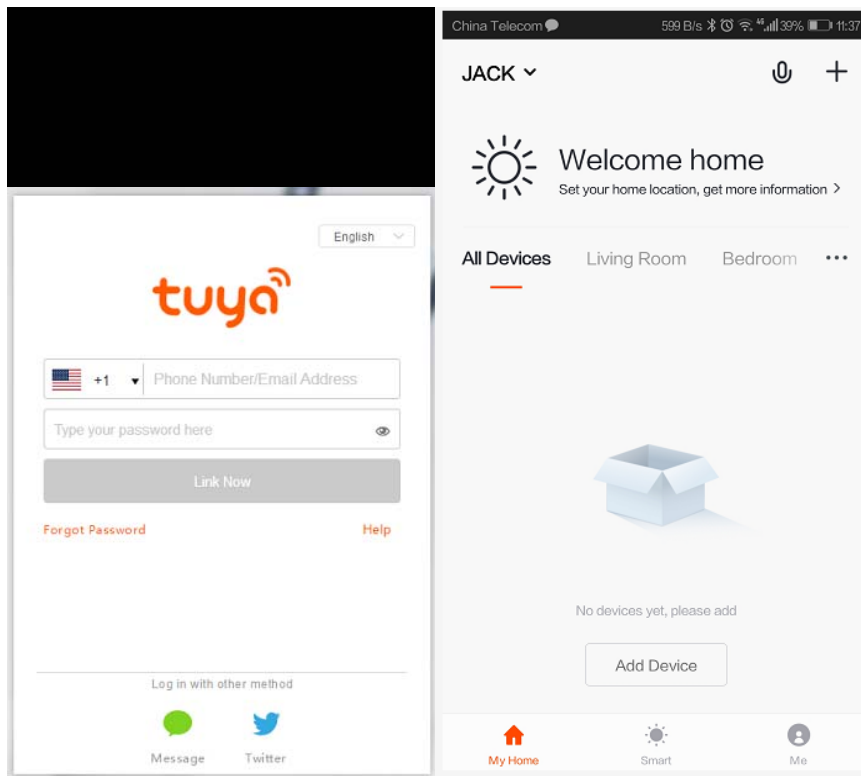


**Step 2:** Search the "Tuya smart," and choose the first one, then Enable it.

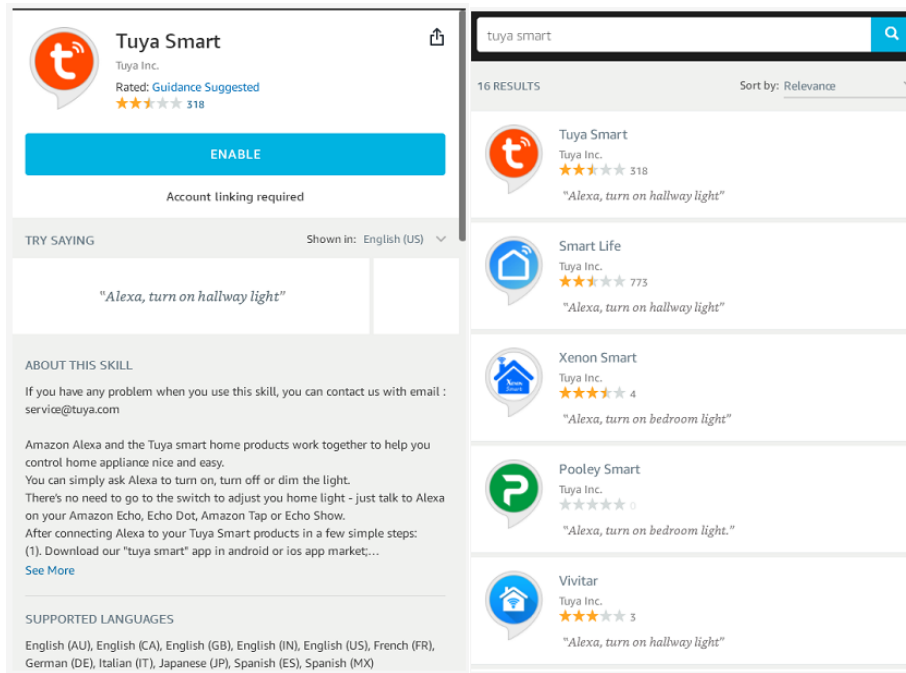




**Step 3:** Select your country code and Enter your “Tuya smart,” APP Account and Password, then press the “Link Now” button. When the Account success to login press the “Done” button.



**Step 4:** Back to the menu, and press the “Smart home” button, then choose the “Devices”, then press the “Discover” button.



**Step 5:** Now u can use your Alexa to control your Smart devices, enjoy yourself.

## Major Specifications

Item	Descriptions
System support	Android 4.0 /IOS 7.0
Wireless IEEE standards	802.11 b/g/n
transmission mode	2.4GHz
Rated Voltage	100~240 V, 50/60Hz
Max. Rated Power	40W
Connector Type	E26/E27
Working life	2-3 years
Transmission distance	Indoor: 20 ~ 30 meters; Outdoor: 40 ~ 50 meters(for reference only, different conditions with different data)
Storage Temperature	-20°C ~ +65°C
Operating Temperature	0°C ~ +50°C
Operation Relative Humidity	20% ~ 90% ( 40°C )
Storage Relative Humidity	20% ~ 93% ( 40°C )
Size L*W*H	93mm*67mm*67mm
The weight of the	70g

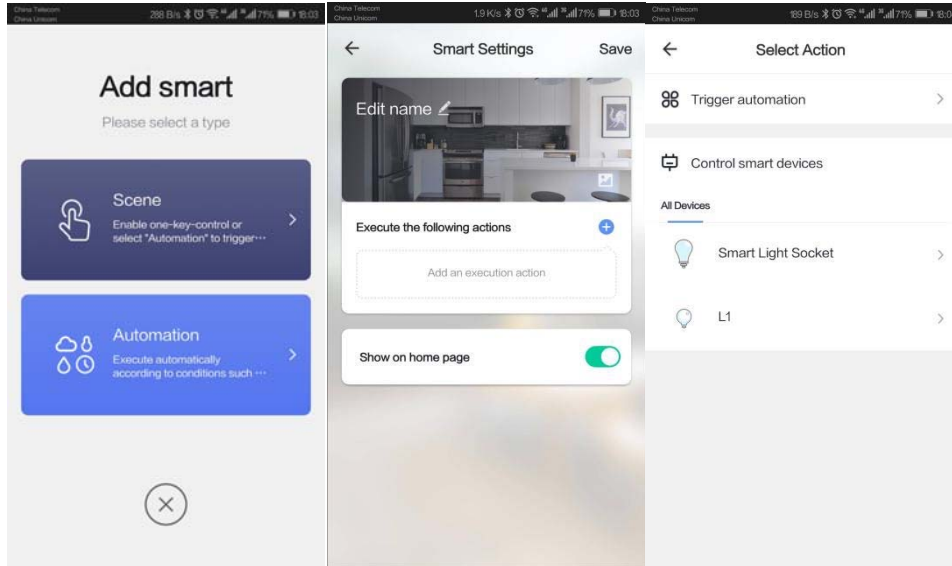


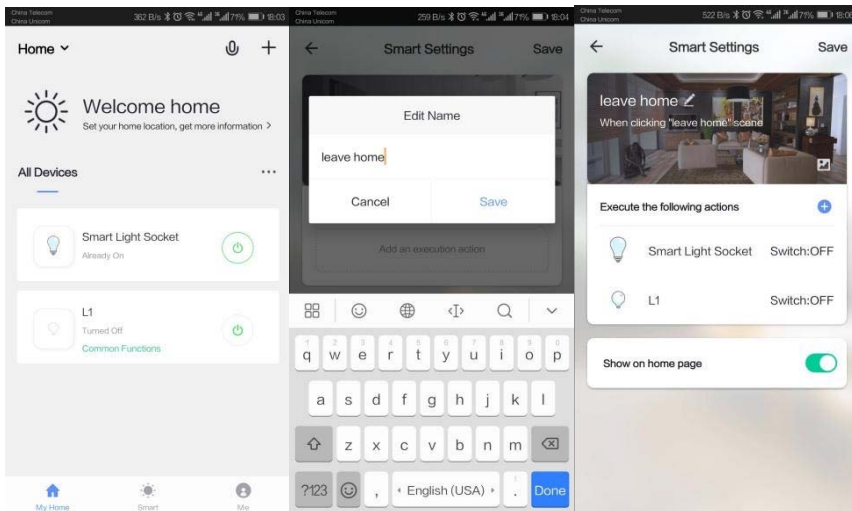
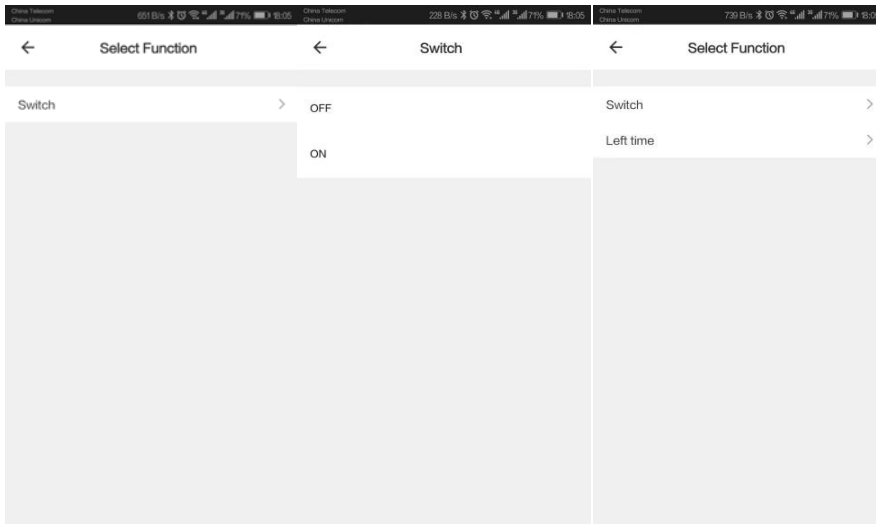
The operation instructions of APP as followings:

—> scene setting:

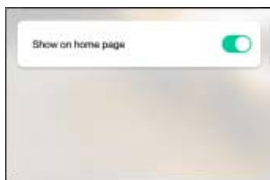
- 1) Add scenarios

Edit the name, such as "home mode" one button to turn on devices .





The above "Setting" appears on the first page of the APP

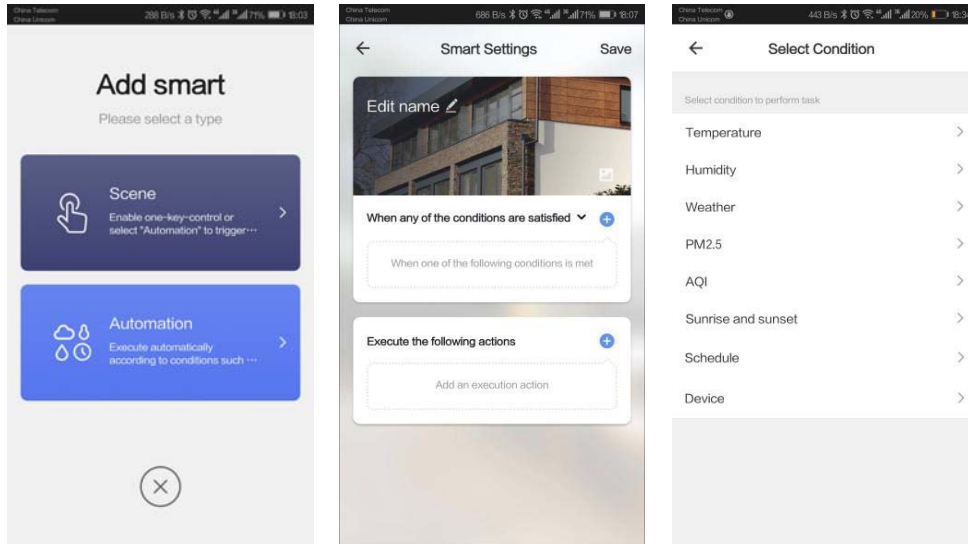


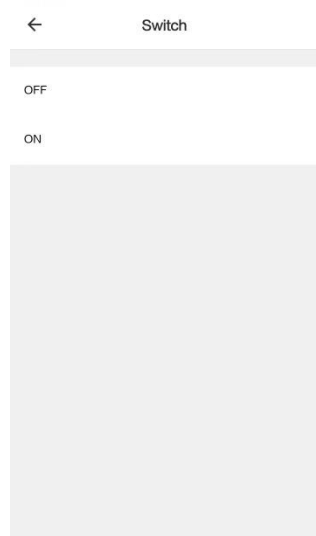
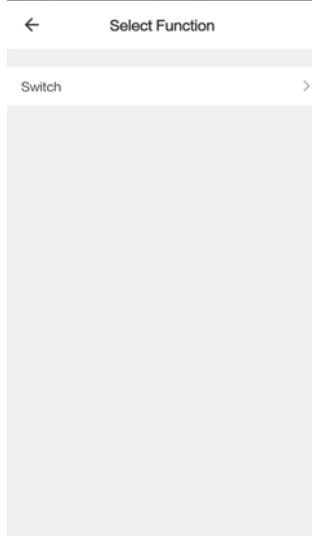
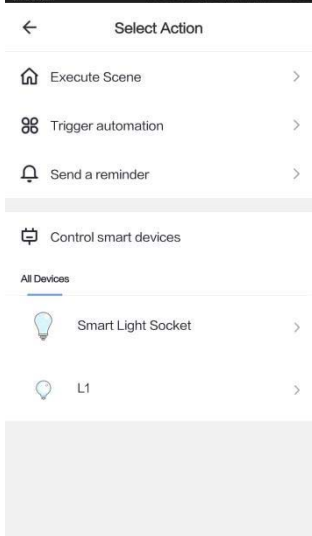
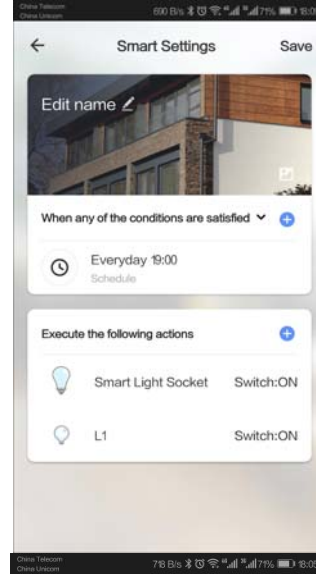
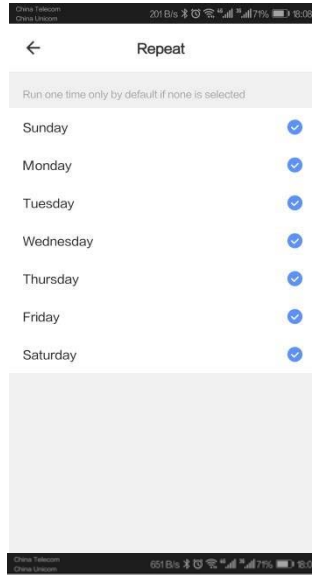
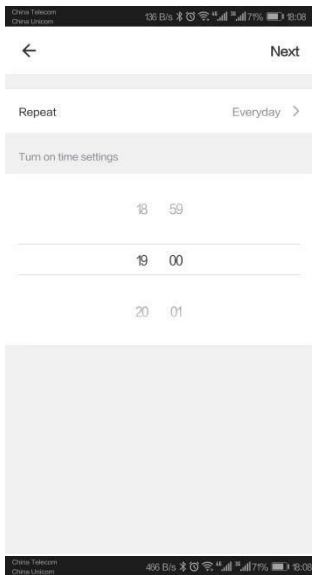
2.

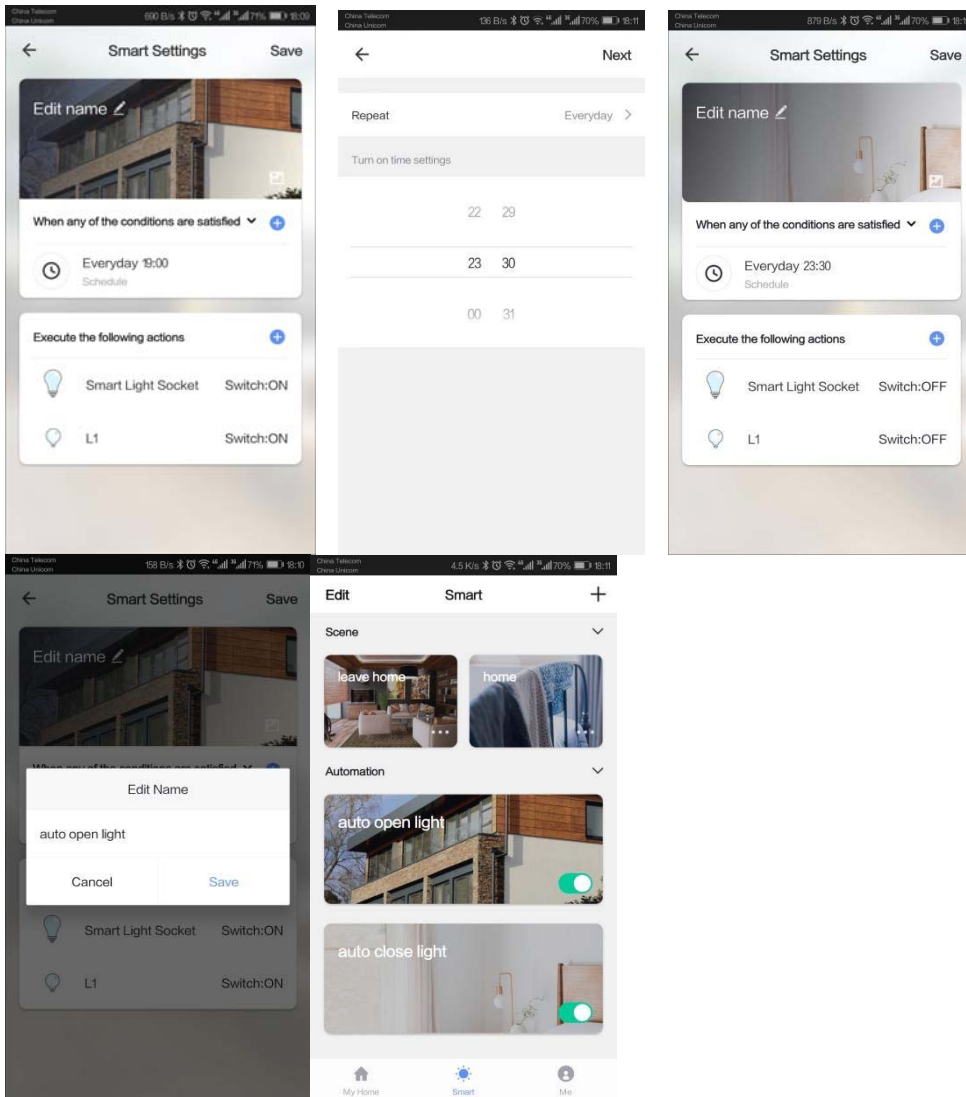
Add automation (Execute automatically according to conditions such as weather, device, time, etc any of the conditions are satisfied.)

Selection conditions: temperature, humidity, weather, PM2.5, AQI, sunset and sunrise, schedule, Device.

To perform the following actions.(execute scenarios, trigger automation, send alerts and control smart devices)







The other scenarios and automated settings refer to the above examples

## FCC Warning

This device complies with part 15 of the FCC Rules. Operation is subject to the following two conditions:

(1) This device may not cause harmful interference, and (2) this device must accept any interference received, including interference that may cause undesired operation.

Any Changes or modifications not expressly approved by the party responsible for compliance could void the user's authority to operate the equipment.

**Note:** This equipment has been tested and found to comply with the limits for a Class B digital device, pursuant to part 15 of the FCC Rules. These limits are designed to provide reasonable protection against harmful interference in a residential installation. This equipment generates uses and can radiate radio frequency energy and, if not installed and used in accordance with the instructions, may cause harmful interference to radio communications. However, there is no guarantee that interference will not occur in a particular installation. If this equipment does cause harmful interference to radio or television reception, which can be determined by turning the equipment off and on, the user is encouraged to try to correct the interference by one or more of the following measures:

- Reorient or relocate the receiving antenna.
- Increase the separation between the equipment and receiver.
- Connect the equipment into an outlet on a circuit different from that to which the receiver is connected.
- Consult the dealer or an experienced radio/TV technician for help.

This equipment complies with FCC radiation exposure limits set forth for an uncontrolled environment. This equipment should be installed and operated with minimum distance 20cm between the radiator & your body.