

## **TABLE OF CONTENT**

PRODUCT OVERVIEW .....	2
KEY FEATURES .....	3
PACKAGE CONTENT .....	3
CHAPTER 1 HOW TO USE THE DIGITAL PEN.....	3
Installing/Replacing an Ink Refill into the Pen.....	3
Installing/Replacing Pen Batteries .....	4
Write Correctly .....	5
CHAPTER 2 BASE UNIT .....	6
General Overview .....	6
Getting To Know Your Memory Unit.....	6
CHAPTER 3 USE YOUR PEN TABLET IN MOBILE MODE .....	8
Mounting your Base Unit to Paper .....	8
Take handwritten notes .....	9
CHAPTER 4 USING THE BLUETOOTH .....	10
CHAPTER 5 USE YOUR POCKET PEN TABLET IN CONNECTED MODE.....	10
Install the Software Suite .....	10
Run the Software.....	12
Connect Memory Unit to Computer .....	13
Uploading Notes to your PC.....	13
Viewing Notes .....	16
Using your Pen in Mouse Mode .....	16
The Note Manager .....	17
Creating Notes .....	20
Manage Notes .....	23
Setting Your Preferences .....	28
Setting a Reminder .....	30
Exporting to JPEG .....	31
Exporting to a Data format file .....	32
Importing a Data format file.....	32
Pasting Notes into Other Applications .....	32
Creating Sticky Notes.....	33
Creating Paper holder Notes.....	35
The Note Editor .....	36

Sending Notes.....	40
Receiving notes over the local network .....	42
Convert Note to Text.....	43
Using the "Note to Text" menu (only available in Windows Vista or 7) .....	43
Using the Vision Objects MyScript® Notes (Optional) .....	43
Application Tray Icon .....	45
CHAPTER 5 USE PEN TABLET IN WINDOWS VISTA .....	45
Getting started.....	46
Windows Journal.....	46
Tablet PC Input Panel.....	47
Sticky Notes.....	48
Windows Snipping Tool.....	49
Pen-and-Ink functionality in Vista- Office 2007 .....	49
CHAPTER 6 USING IN MAC OS .....	52
CHAPTER 8 USING THE PHOTO SKETCHER .....	56
CHAPTER 8 TAKING CARE OF YOUR POCKET PEN TABLET .....	56
Cleaning your Pocket pen tablet .....	56
CHAPTER 9 TROUBLESHOOTING .....	56
CHAPTER 10 TECHNICAL SPECIFICATIONS .....	58

## Product Overview

Thanks for purchasing this useful and powerful product!

The Pocket Pen Tablet can capture any handwritten notes or drawings on a plain paper and store them in its internal flash memory. Captured notes can be uploaded to computer via its USB interface. It really helps when you are away from computer and needs to capture any instant thoughts or important points.

The *Pocket pen tablet* consists of a digital pen and a small receiving unit, which combines Ultrasound and Infrared technologies with sophisticated algorithms to enable an accurate tracking and positioning system that tracks the movement of the tip of the pen on any surface and converts the movement into a vector image of the user's handwriting. The digital pen transmits handwritings to the receiver unit for storage.

The following chapters will describe both hardware and software features of the device in details. Read the Quick User Guide before operation. For detail information

about the device, please read the included User Manual on the CD provided with the package, so that you are aware of some useful functions that you may not know.

## Key Features

- Capture natural handwritings and drawings while being away from computer.
- Save captured handwritten notes into built-in flash memory.
- Upload captured handwritten notes to computer via USB connection.
- Act as a digital ink pen with hovering and mouse functionality to directly write into Windows Vista and Office 2007.
- No installation is required to activate digital ink in Vista and Office 2007.
- No need for special paper.
- Standard off-the-shelf ink refill and batteries.

## Package Content

- Digital Pen
- Base unit
- USB cable
- Pen battery
- ink refill
- Quick Start Guide
- Warranty Card
- Note Manager CD

## Chapter 1 How to use the Digital Pen

Your Pen is a unique device that captures notes handwritten on plain paper, and transmits them to the base unit

The *Pen* Uses patented technology combining Ultrasound and Infrared technologies with sophisticated algorithms to enable an accurate tracking and positioning system that tracks the movement of the tip of the pen on any surface and converts the movement into a vector image of the user's handwriting.

### ***Installing/Replacing an Ink Refill into the Pen***

The top of the pen cap also functions as an ink refill extractor.

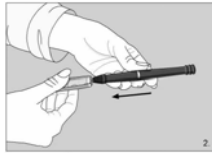
**NOTE:** Make sure you use a refill that is similar to the original (standard refill (67.0mm long X 2.35mm diameter)).

*To replace the ink refill:*

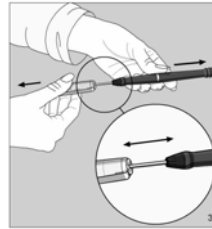
1. Detach the cap from the digital pen.



2. Insert the ink refill into the cross of the extractor with pressure so that the extractor holds the refill firmly. Hold the pen firmly, and apply pressure with the extractor against it.



3. Pull the used Refill out.



*To insert a new refill*

1. Slide the new refill into the tip of the pen.
2. Gently press the new refill until it is lodged securely in place.



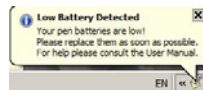
**Installing/Replacing Pen Batteries**

- (1) Remove the battery compartment cover.
- (2) Install two SR41 batteries, with the positive poles facing up.
- (3) Supplied batteries are good for initial use only Replace battery compartment cover.



**Notice:**

- Please use the enclosed GP SR41 batteries with the positive polarity facing up.
- Batteries may be safely disposed of in normal household waste. Contact your local government for disposal or recycling practices in your area.
- Caution: Risk of explosion if battery is replaced by an incorrect type Please use silver oxide button cells battery type only.
- When your Pen battery runs low, the following message appears on your screen:



This warning is continuously displayed on each new note and the application tray icon in the system tray changes to reflect the current status until the batteries are replaced.

Tray icon indication, for Pen low battery, in Note Mode



Tray icon indication, for Pen low battery, in Mouse Mode.




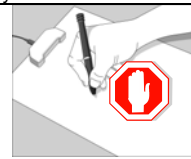

**Note:** Lifetime of the batteries may vary and cannot be guaranteed.



### **Write Correctly**

When you pick up the pen, find a position that is comfortable for you. Be careful to hold the pen in a way that does not block the signals sent from the tip of the pen to the memory unit receivers.

When you are writing with the digital pen, make sure its inclination to the paper surface is between 45° and 90°. Hold the pen firmly and write normally.



For better writing quality		
		
Do not block the base unit with your hand.	Do not place your hand between the pen and receiver.	Do not hold the pen like a paintbrush.

 <b>WARNING:</b> Do not attempt to open the Digital Pen. This may cause the pen to malfunction.	
--	---

## Chapter 2 Base Unit

### General Overview

The Pocket pen tablet is a unique device that captures notes handwritten on plain paper, Stores the notes to memory and uploads them to a PC.

The device consists of a Digital Pen and a small receiving unit.

The *Pocket pen tablet* uses a patented technology combining Ultrasound and Infrared technologies with sophisticated algorithms to enable an accurate tracking and positioning system that tracks the movement of the tip of the pen on any surface and converts the movement into a vector image of the user's handwriting.

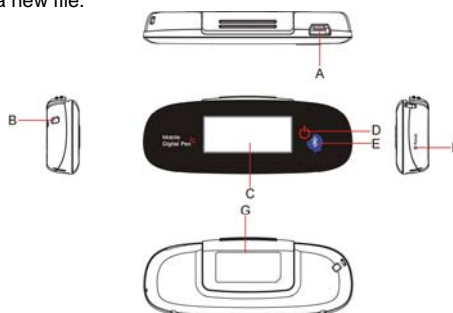
The *Mobile Pocket pen tablet* can capture and store up to 50 A4 pages.

At home or in the office, the user can connect the Mobile Pocket pen tablet to the PC using the USB cable, then upload and manage the saved notes.

### Getting To Know Your Memory Unit

#### Buttons & Ports

The memory unit consists of an LCD for status indications. The memory unit also consists of a single button (Top button) allowing you to turn the unit ON and OFF, as well as creating a new file.



- A. USB port** – connect to computer through the USB cable
- B. Neckstrap Holder**
- C. LCD display**
- D. Top button** – Press and hold for about 5 seconds to turn on the unit. Press shortly to create a new note.
- E. Bluetooth ON/OFF** – Turn on or off the bluetooth.
- F. Reset hole** – When the unit does not respond, stab into this hole to reset it and then press and hold the Top button to restart the unit.
- G. Paper Clip** – clip the unit to paper

### Turn on/off the Unit

Press and hold the Top button to turn on or off the unit before you use the base unit in mobile mode.

**NOTE:** The unit will power off automatically after 60 minutes of idle time (no working).

### Charge the Battery









Your Pocket pen tablet includes a rechargeable internal battery. Each time you connect your unit to your PC USB port, the batteries are being charged. Full charge time takes about 3.5 hours.

### Reset the Base Unit

If the base unit is frozen, you can use a pin to press the Reset button to reset it and then press and hold the **Top** button (ON/OFF button) to restart the unit.

### Memory Unit LCD

Use the LCD to view status indications.

	Name	On when	Off When	Blinks When
	Mobile Pocket pen tablet is Connected	Unit is connected to PC	Unit is NOT connected to PC	Data is uploaded to PC
	Memory FULL	Mobile Pocket pen tablet Unit Memory is 90% full. It is highly recommended to upload your files to your PC and delete them from memory!	Less than 90% capacity used	Never
	Pen Low Battery	Low Pen battery	Pen Battery good	Low Pen battery
	Base unit Low battery	Full	Unit is Off	Charging
	Note Mode	Pen down/Pen move	Mouse Mode	Pen down/Pen move
	Mouse Mode	Pen down/Pen move	Pen Mode	Pen down/Pen move
	Number of saved notes in memory	Always	Unit is Off	Memory full Or Error
	Bluetooth	The bluetooth is on	The bluetooth is off	Never

### Power Save mode

In order to save power from the rechargeable battery, while in mobile mode, if there is no activity (Meaning: No Pen usage nor key press on base unit), your base unit will automatically shut down in 60 minutes. Your note will be automatically saved.

To exit power save mode, simply press ON/OFF button on the unit to turn it on. (**Note:** This will start a new note file).

## Chapter 3 Use your Pen Tablet in Mobile Mode

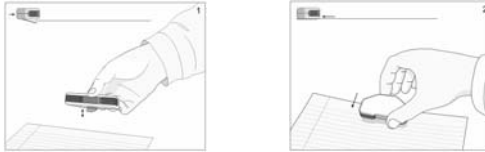
In the mobile mode, you can use your Pocket Pen Tablet to take and store your important notes or drawings at any time and where.

### Mounting your Base Unit to Paper

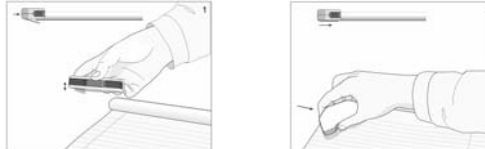
Your base unit can be mounted in 3 positions on top of the paper depending on various device model.

The following images illustrate the way you can mount your base unit, according to the recommended positioning.

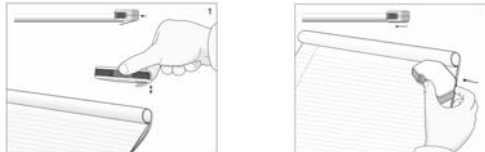
- A. Mounting your base unit at the **top center** of the paper is recommended for a **single paper** usage:



- B. Mounting your base unit at the top left corner of a paper block is recommended for right hand Users.



- C. Mounting your base unit at the **top right corner** of a **paper block** is recommended for **left hand Users**.





**Base Unit Coverage area:**

The following images illustrate the coverage area of your base unit.

Note: a. The paper is an A4 size paper; b. The striped line illustrates the covered area in each of the positions.

Base unit located at the left corner.



Base unit located at the right corner.



Base unit located at the top center.

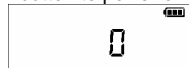


**Warning:**

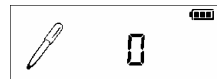
DO NOT move or overturn the base unit when you are using the base unit. Fix it up onto the edge of the paper with the face up. Moving or overturning it may result in mixed strokes or other fatal errors.

**Take handwritten notes**

- (1) Press and hold the ON/OFF button to power on the unit.



- (2) Hold the base unit and gently press the paper clipper.  
(3) Slide the base unit into the paper's upper edge and make sure the base unit is in the center.  
(4) Pick up the digital pen and start writing. (NOTE: Be careful to hold the pen in a way that does not block signals sent from the tip of the pen to the receiver unit.)



- (5) Once you've completed one page, shortly press the ON/OFF button to save current page and start a new page. On the base unit screen, you can see the page number added by one.  
(6) All notes are stored in the base unit. You can upload them to a PC for viewing, editing, or email.

## Chapter 4 Using the Bluetooth

The device has bluetooth which enables you to connect the base unit wirelessly to any mobile device with bluetooth, for example, mobile phone based on Windows / Android operating system.

1. Install the Note Manager application on your mobile device (mobile phone).
2. Press the **Bluetooth** button on the unit to turn on the bluetooth.
3. Turn on the bluetooth on your mobile device (mobile phone) and pair with the base unit.
4. Once the base unit and mobile phone is paired and connected successfully, you can start using the Pen Tablet just as you do on a PC.

## Chapter 5 Use your Pocket Pen Tablet in Connected Mode

Connect your Pocket Pen Tablet to the computer with the USB cable, the device works in the connected mode. Once connected, you can view, edit, send or print your notes. Also, you can take notes and make drawings just as you do in mobile mode. The digital pen can also acts as a mouse with features like hovering, left and right click. Additionally, there are some special features to be used only with the connected mode. Those features will be described in details in the followed chapters. Before you connect the device to a PC, first make sure to install the Pocket pen tablet manager application included in the CD and run it.

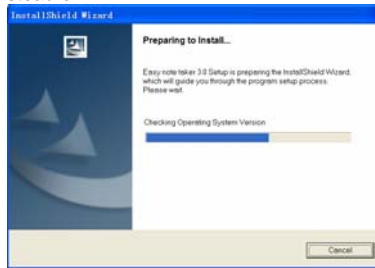
### ***Install the Software Suite***

Your product is packaged with a CD that includes its companion desktop software – Note Manager. With the software, you can upload notes to computer, view or edit the notes.

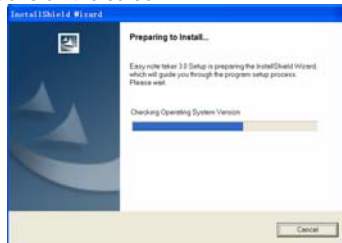
#### **System Requirements:**

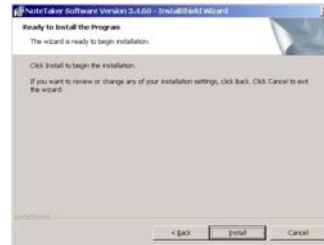
- o Microsoft © Windows 2000 (SP4) or Microsoft © Windows XP (SP2) or Microsoft © Vista or Windows 7.
  - o Minimum 50MB available hard disk space
  - o Minimum 128MB RAM
  - o 32 bit color quality
  - o Screen resolution of 1024x768 pixels
  - o Available USB port.
- (1) Insert the installation CD into your CD ROM drive. The setup program should start automatically. If not, run the program by selecting 'Run' from the Windows

'Start' menu and type in D:\setup.exe. If your CD drive uses a different letter, type that letter instead of D.



(2) Follow the instructions on the screen.



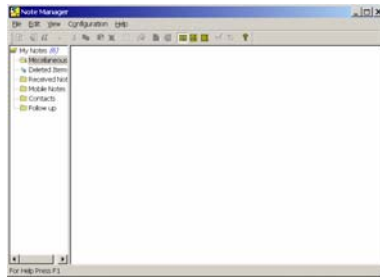


(3) Click "Finish" once the installation is finished.

**Note:** After the installation process, when running the application for the 1<sup>st</sup> time, a new folder named "Ink Notes" is created in your "My Documents" directory. All your notes will be saved into this directory. In the event that no "My Documents" directory is found, the installation process will create a new "My Documents" folder on your C hard drive. The 'Ink Notes' folder will then be created under this directory. If you uninstall, upgrade or reinstall the software in a different location, the note files will remain in this directory, and will not be overwritten.

### ***Run the Software***

Select "Programs" → "Pocket pen tablet" from the Windows "Start" menu to run the Note Manager.



### **Connect Memory Unit to Computer**

Use the Mobile Pocket pen tablet's mini USB connector to plug in the USB cable (included in the package), which connects the unit with the PC when uploading notes.

**Note:** Only use the USB cable supplied with your Mobile Pocket pen tablet package.

The USB cable (included in the package) plugs into the Memory Unit Connector and is used for the following:

- Uploading notes from the memory unit to the PC
- Working in Connected Mode
- Firmware updates

**Important Notice:** Do not connect more than one set of this device at the same time. That may cause interference with each other.

### **Uploading Notes to your PC**

#### **Connect Memory Unit to Computer**


When in Connected Mode, you can upload all your notes from the memory unit to your PC using the Pocket pen tablet software application.

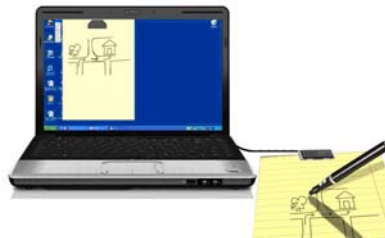
Before doing so, first make sure that:

- Your Note Manager software application is running
- Your memory unit is connected to your PC's USB port using the memory unit USB cable.

The "CONNECTED" icon will be displayed on your memory unit LCD:



Application Tray Icon will change while uploading your notes: 



## Port Auto-Detection

Once you launch the application, the Pocket pen tablet software automatically detects your hardware.

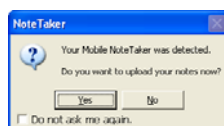
The application automatically searches all ports in order to detect the hardware. If it is unable to locate the connection, the Hardware Detection dialog box appears.



## USB Hot-Insertion

USB Hot Insertion refers to connecting the USB cable while the application is running. The application will auto-detect your hardware if the USB cable is disconnected while the system is running and then re-connected. The application will also auto-detect the hardware if you first run the software and then connect the USB cable.

When you plug your Mobile Pocket pen tablet unit (If the application is running), you will be asked if you want to upload your notes from the Mobile unit memory to your Note Manager.



## Setting your base unit orientation preferences

Your base unit can be placed the top center of an A4 paper.



## Pen Mode and Mouse Mode

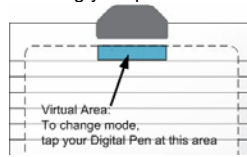
The device supports a Note mode and a Mouse Mode. In the Note mode, you can write and draw pictures with the pen. In the Mouse mode, the pen acts as a mouse with click and hovering function.

Selecting default mode can be done in 2 ways:

- a. At the first time you start your Pocket pen tablet application, OR
- b. Using the Pocket pen tablet "Configuration" menu ('Set Digital Pen Mode')

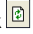
Changing modes during operation can be done in 2 ways:

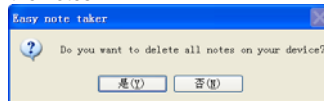
- Press the base unit top button ('Mode' button) , OR
- Right click the 'Pocket pen tablet' tray icon, and change mode, OR
- Clicking on the virtual area using your pen.



**Note:** On each mode change, a Balloon will popup indicating the current mode and the corresponding LED will lit.

### Uploading Notes

- Start the Note Manager.
- In the "File" menu, select "Upload", or click  in the upper toolbar. All the notes in your memory unit are uploaded to your PC.
- At the end of the process, a message appears asking if you want to delete all notes on the memory unit. Select 'Yes' to erase all notes on your memory unit. Select 'NO' to retain the notes.



- Uploaded notes will be saved in the Mobile Notes folder named by date.

**NOTE:** When you select "NO", the next time you upload those notes that are already uploaded to the PC Will not be uploaded.

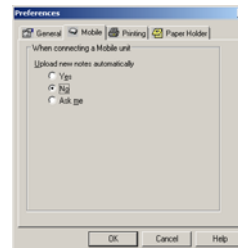
However, if you delete notes from the PC application and then upload again from the memory unit, the notes will be uploaded again.

You can select one of three options to be performed automatically when your Mobile Pocket pen tablet base unit is connected. The following can be selected in the 'Configuration -->Preferences' menu within the Note Manager.

#### Upload new notes automatically options:

**YES** – Your Mobile Notes will be automatically uploaded each time you connect it to your PC

**NO** – Your Mobile Notes will not be uploaded. In this option, you will manually need to perform this action by



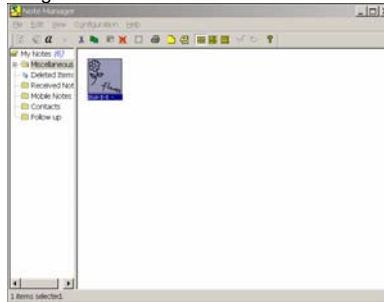
selecting "File" --> "Upload" menu within the Note Manager

**ASK ME** – Each time you connect the Mobile Pocket pen tablet base unit, you will be prompt if you want to upload your notes.

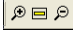
### **Viewing Notes**

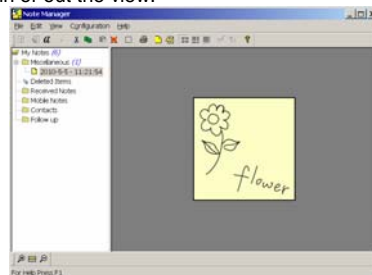
You can view your note on the computer screen.

(1) Run the Note Manager.



(2) Click the "Mobile Notes" folder in the left pane, you should see all note thumbnails.

(3) Double click a note thumbnail to view it in full screen. You can click the  button to zoom in or out the view.



### **Using your Pen in Mouse Mode**

In Mouse mode, your Digital pen behaves as a mouse, having the following functionality:

- To move your mouse cursor you can hover with the pen.  
To start **Hovering** you can press the side button or tip the pen on the paper.  
The pen will now hover even with no press for about 30 seconds.



- To **Click** an object, point your mouse cursor on that object. Now tip the pen on the paper or click the side button.
- To **Double-Click** an object, point your mouse cursor on that object. Now tip the pen twice on the paper or click the side button twice.
- To **Right-Click** an object, point your mouse cursor on that object. Now press the tip of the pen a bit longer on the paper. A special 'Right Click' cursor will appear. Lift the pen from the paper, and the context menu (Right Click menu) appears.

**Avoid interference while using regular mouse:**

When the pen is not in use it powers off automatically after 60 minutes.

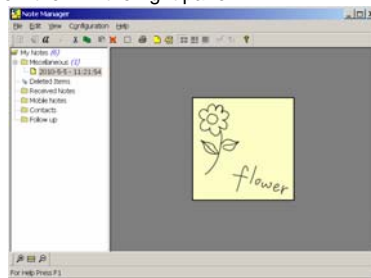
It is recommend that while not in use, the pen is placed as shown, to avoid interface with a regular mouse operation.



**The Note Manager**

The Note Manager can be used for storing, viewing, searching, copying and exporting notes.

It is set up in Windows Explorer format, which allows you to browse through your files in the left pane and view them in the right pane.



**Note Manager Menus**

Use these menus to select options and preferences and to perform all software functions relating to storage and transfer of your notes.

The following table contains a list of all menus and menu commands in the system together with a short description of their function.

<b>File Menu</b>	
Upload	Upload notes from the mobile unit to the PC
Note To Text	Convert handwritten note to texts (only available in Windows Vista or 7 OS).

Convert To Text	Convert your note to Text using MyScript® Notes. (Only available if the recognition software is installed.)
Join Notes	Join several notes together.
Move to	Allows you to move the selected note to another folder
Send To	Sends any note by email (Jpeg or Data file) or local network
Import	Import data file (.pegvf format)
Export	Exports the selected note/s to a JPEG file or a data file format
Set Reminder	Enables you to set an exact date and time that a selected note will be displayed as a reminder
Show as Sticky Note	Make this Note a Sticky Note
Show As Paper Holder	Make this Note as Paper holder
Properties	View Note Properties
New Folder	Create a new folder
Empty Deleted Items	Performs a final irreversible deletion of all deleted notes
Print	Prints the selected note/notes
Print Preview	Displays the selected note as it will look when printed
Print Setup	Allows you to select print options
Backup/Restore	Backup/Restore your Notes Database
Exit	Exits the Note Manager interface
<b>Edit Menu</b>	
Edit Note	Allows you to edit a selected note
Cut	Cuts the selected note and saves it to the clipboard
Copy	Copies the selected note and saves it to the clipboard
Paste	Pastes whatever was last copied or cut to the clipboard
Delete	Deletes the selected note/notes
Rename	Allows you to rename the selected note
Find Note	Lets you search through saved notes based on defined criteria
Find Next	Locates the next note that matches the search criteria
Select All	Selects all notes
<b>View Menu</b>	
Sort	Sort Notes by Date or Name
Small Thumbnails	Displays small thumbnails in the Note Manager view
Medium Thumbnails	Displays medium sized thumbnails in the Note Manager view
Large Thumbnails	Displays large thumbnails in the Note Manager view
Zoom In	Enlarges the thumbnail view by 50% (available only when viewing an individual note thumbnail)



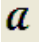



Zoom to Fit	Returns the thumbnail view size to the original size (available only when viewing an individual note thumbnail)
Zoom Out	Reduces the thumbnail view by 50% (available only when viewing an individual note thumbnail)
<b>Configuration Menu</b>	
Detect Hardware	Allows you to detect your unit
Preferences	Allows you to select your personal preference for elements such as; note color, auto-save, windows options and printing options
Pen Styles	Lets you select the default ink color and stroke width of the pen
Set Device Orientation	Set your device position on paper (Top center, Left or Right corners).
Set digital note mode	Select default Pen mode (Mouse/Note)
Mouse Properties	Mouse resolution
<b>Help Menu</b>	
Read User Manual	Opens the pocket pen tablet User Manual
About NoteTaker	Displays pocket pen tablet version information








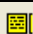



### Note Manager Toolbox

The Note Manager Toolbox contains buttons that give you access to the most commonly used menu commands.



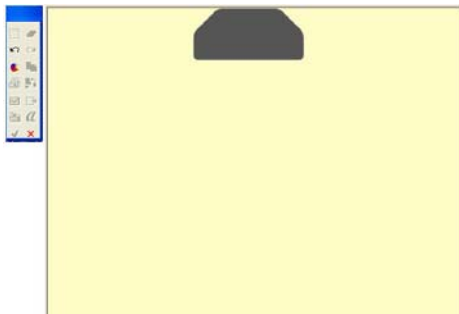
The following table contains a list of each button in the toolbox together with a description of its function.

Button	Description
	UPLOAD – When in Connected Mode, you can upload all your notes from the mobile unit to your PC using the Pocket pen tablet software application
	Note To Text - Convert handwritten note to texts. (only available in Windows Vista or 7)
	Convert your note to text using MyScript® Notes. (Only available if the recognition software is installed.)
	CUT – Cuts the selected note and saves it to the clipboard
	COPY – Copies the selected note and saves it to the clipboard
	PASTE – Pastes whatever was last copied or cut to the clipboard

	DELETE – Deletes the selected note/notes
	EDIT NOTE – Allows you to edit a selected note
	PRINT -- Prints the selected note/notes
	SHOW AS STICKY NOTE – Make your Note as Sticky Note
	SHOW AS PAPER HOLDER – Make your Note as a paper holder
	SMALL THUMB – Displays small thumbnails in the Note Manager view
	MEDIUM THUMB - Displays medium sized of thumbnails in the Note Manager view
	LARGE THUMB - Displays large thumbnails in the Note Manager view
	NOTE MODE
	MOUSE MODE – TURNS YOUR PEN INTO A MOUSE
	ABOUT – Provides you with your Pocket pen tablet version information

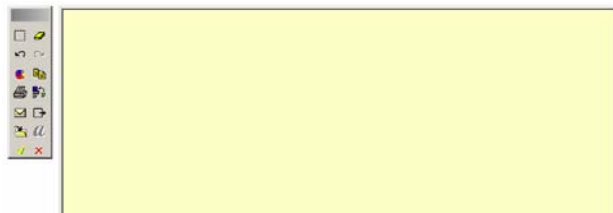
### **Creating Notes**

The moment you begin to write or sketch with your digital pen, a **Note Window** appears on your screen that reflects everything that you write on the paper attached to the base unit. The Note Window toolbar allows you to perform various basic functions such as saving, editing, sending and copying your notes while writing, or once you have finished writing.






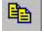







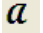


**NOTE:** While writing, make sure not to block the line of sight between the pen and the base unit with your hand. When the line of sight is blocked, the Pocket pen tablet will not function properly.

**The Notes Toolbar**



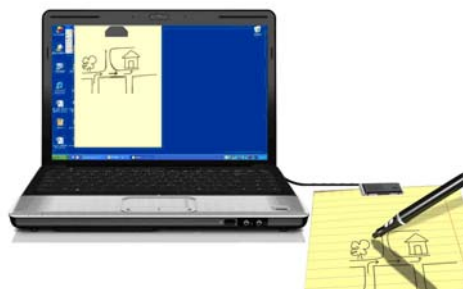
The following table contains all buttons available in the Notes toolbar together with a description of their functions.

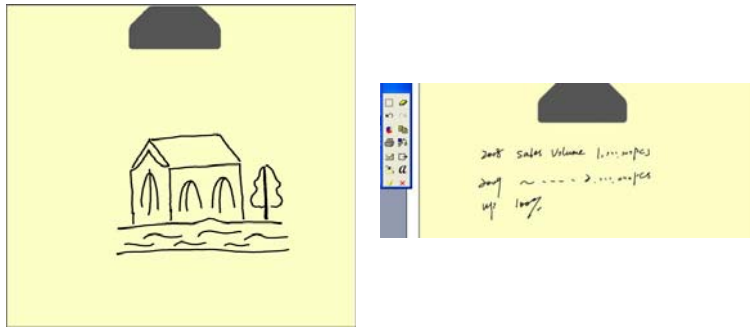
Button	Description
	<b>EDIT</b> – Opens the Note Editor for editing the note
	<b>CLEAR</b> – Clears the entire on-screen note.
	<b>UNDO</b> – Clears the previous stroke made by the digital Pen in reverse chronological order.
	<b>REDO</b> – Replaces previously undone strokes in chronological order.
	<b>PEN STYLES</b> - Changes the Ink color and width.
	<b>COPY</b> – Copies the note to the clipboard for pasting into other applications.

	<b>PRINT</b> – Prints the current note.
	<b>SEND BY NETWORK</b> – Sends the current note by local network to selected recipients.
	<b>SEND BY EMAIL</b> - Sends the current note by email to selected recipients as a JPEG attachment.
	<b>EXPORT TO JPEG</b> - Exports the selected note to a JPEG file.
	<b>SAVE TO FOLDER</b> – Saves the note to a specified folder and closes the note window.
	Convert your note to Text using MyScript® Notes. (Only available if the recognition software is installed.)
	<b>CLOSE WITHOUT SAVING</b> – Closes the current note without saving.
	<b>SAVE AND CLOSE</b> – Closes the current note and saves it into the Notes Manager under the default Miscellaneous folder (the note is named according to the creation date).

### Writing notes or Make Drawings

With the device connected, pick up the pen to write or draw.





During writing or drawing, you can use the toolbar to edit, cancel, erase, copy or send the notes. When finished, click to exit from the Note Window.

### **Saving Notes**

Notes can be saved at any time during the note creation process. They are automatically saved to the default and named according to the date they were created. Notes can be renamed at any time once they have been saved.

To save a note,

- (1) In the Note Window Toolbar, click the Save and Close icon to save the note to the default *Miscellaneous* folder.
- (2) Click the Save the Folder icon to save the note to any folder you select.

**NOTE:** It is also possible to configure an 'Auto-Save' feature. That will automatically save your note periodically while you are working.

### **Manage Notes**

The Note Manager is installed with predefined folders, ***Miscellaneous, Deleted Items, Contacts, Follow Up, Received Notes*** and ***Mobile Notes***.

You can use these folders for storing your notes and can create additional custom folders, as needed.

- Miscellaneous: User-defined Folder
- Deleted Items: Store deleted notes
- Received Notes: Store received notes by e-mail.
- Mobile Notes: Store uploaded notes from the base unit.
- Imported Notes: Store imported notes from computer.
- Follow up: Store to-be-continued notes
- Contacts: Store contact information.

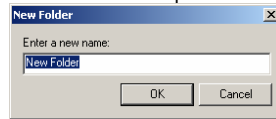
### Creating a new folder

To create a new folder:

Creating a new folder can be done in few ways:

You can use 'File' menu to run the 'New Folder' option

- (1) Choose the folder you want to create a sub folder for or choose the 'My Notes' root folder
- (2) Use 'File' menu to run the 'New Folder' option.



- (3) Fill the new folder name.

You can right click any folder in the Folders Tree

- (1) Choose the folder you want to create a sub folder for or choose the 'My Notes' root folder.
- (2) Right click this folder.
- (3) Choose 'New Folder' from the drop down menu.
- (4) A new folder will be created.
- (5) To rename this folder please see 'Renaming a folder'

### Renaming a folder

All folders can be renamed except for the predefined **Miscellaneous**, **Deleted Items**, **Received Notes** and **Mobile Notes**.

To rename an existing folder:

- (1) Right-click the folder you want to rename (Or press F2 key, when the folder is selected).
- (2) In the short-cut menu, select Rename. The folder name is now highlighted.
- (3) Type the new folder name.

### Deleting a folder

All folders can be deleted except for the predefined

**Miscellaneous**, **Deleted Items**, **Received Notes** and **Mobile Notes**

To delete a folder,

- (1) Right-click the folder you want to delete (Or press the delete button, when the folder is selected).
- (2) In the shortcut menu that appears, select Delete.
- (3) Select 'Yes' to confirm that you would like to delete the folder, or 'No' to cancel the operation.



### Renaming Notes

Each time you create and save a new note, it is automatically given a name that corresponds to the exact date and time the note was created. You can rename notes at any time to give them names that are more meaningful to you.

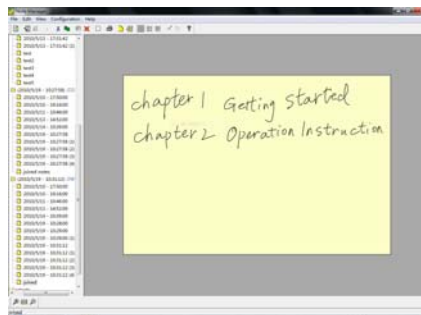
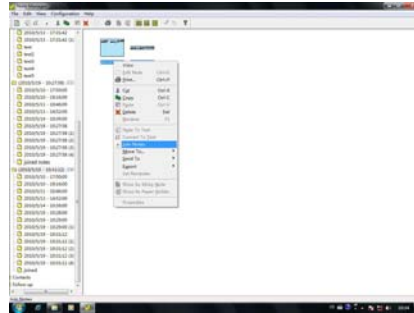
To rename a note:

- (1) Right-click the note you want to rename (Or click F2 key, when the note is selected).
- (2) In the shortcut menu that appears, select **Rename**. The note name is highlighted.
- (3) Type the new note name.

### Join Notes

You can join more than one note together.

- (1) Select more than one note together by dragging the mouse.
- (2) Right click the selected notes and then select "Join Note" from the menu.
- (3) Enter the new name for the joined note and press Confirm. The selected notes are joined into one note with the new name.



(joint note)

### Moving Notes

You can move a note from the folder it is currently in to any other folder.  
To move a note to another folder:

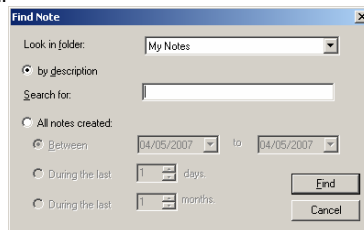
- (1) In the **Note Manager**, select the note file name or thumbnail.
- (2) From the **File** menu, select **Move to**,  
–or–  
right-click the note name or thumbnail and in the shortcut menu, select **Move to**
- (3) Select the folder name to which you would like to move the note

**NOTE:** You can also use 'Drag and Drop' to move a note.

### Finding Notes

It is possible to search through your saved notes to locate any particular note.  
In order to perform a search:

- (1) In the Notes Manager *Edit* menu, select *Find Note*.
- (2) Select the folder or folders where you would like to search.
- (3) If you would like to search by description or note name, select by description and then in the search for field, type in the name or description of the note you are looking for.
- (4) To search by creation date parameters, select All notes created and then specify the date range according to which you would like to search.
- (5) Click Find.




### Printing Notes

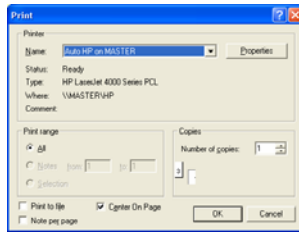
A note can be printed from any of the 3 Note interfaces – The Note Window, The Note Editor or the Note Manager. Notes can be printed from a saved file in the Note Manager, or while they are open in the Notes Window or Notes Editor.

To print a note from a file,


- (1) In the Note Manager, click the note name or thumbnail.
- (2) In the File menu, select Print Preview to first see how the note will look when printed.

**Note:** You can preview multiple notes simultaneously. Select the first note, then on the keyboard press the <CTRL> key and select the other notes.

- (1) In the File menu, select Print or click the Print button .
- (2) Select your desired print setting and properties (this can also be done through Print Setup from the File menu. Some default print preferences can also be set through the Configuration menu preferences).
- (3) Click OK.



To print an open note,

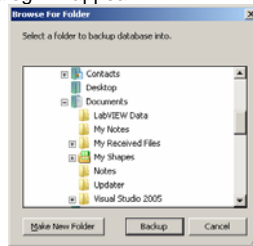
- (1) In the Notes Editor File menu, select Print or click the Print button    
–or–   
in the Note Window toolbar, simply click the Print button.
- (2) Repeat steps 4 and 5 in the previous procedure.

### Backup and Restore Notes Database

You can use the Note Manager to backup your entire database, and restore it when needed.

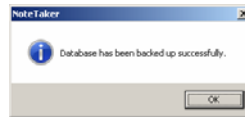
To backup your database:

- (1) Select '*File -->Backup/Restore --> Backup Database*' from the Note Manager menu, the following dialog will appear.



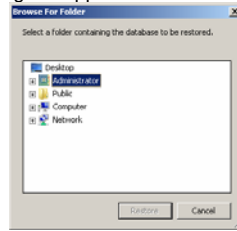
- (2) Choose the destination path to backup all your notes database   
(You can create a new folder by pressing '*Make New Folder*' button)

- (3) Click the '*Backup*' button, Upon a successful backup, the following message appears:

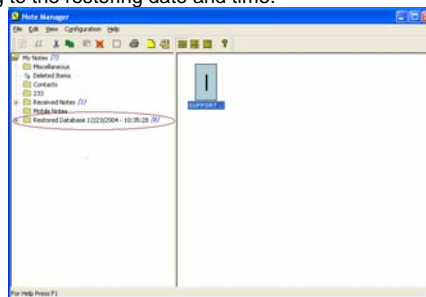


To restore your database:

- (1) Select '*File -->Backup/Restore --> Restore Database*' from the Note Manager menu, the following dialog will appear.



- (2) Choose the location of your database backup]
- (3) Click the '*Restore*' button.
- (4) Upon a successful restore, your database will be restores to a new folder in the Note Manager. This new folder will be named '*Restored database*' and will also be according to the restoring date and time.



### **Setting Your Preferences**

Set your default preferences such as note color, auto-save options, print preferences, etc. in the **Preferences** dialog box.

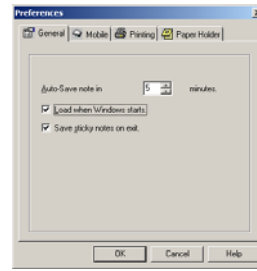
The dialog box is divided into three tabs, each controlling a different aspect of the system: General, Printing, and Ink.

To access Preferences:

(1) In the Notes Manager **Configuration** menu, select **Preferences**.

(2) Set your **General Preferences** as follows:

- In the **Auto-Save note in** box, select the time interval (in minutes) after which the system automatically saves your note. This also activates an auto-recovery feature that recovers any unsaved information in case of system crash or power failure. The only lost inputs are changes made since the last auto-save.
- Select the **Load When Windows Starts** checkbox to automatically load the Pocket pen tablet each time you turn on your computer, so that a new note will pop up whenever you begin to using the Pen
- Select the **Save Sticky Notes on Exit** checkbox to automatically save all the new sticky notes you created. The saved sticky notes will then instantly appear the next time you either turn on your computer or restart the application



Set your **Mobile Preferences** as follows:

- Select the **Upload new notes automatically** proper option.



Set your **Print Preferences** as follows:

- Select the **Note Per Page** checkbox to specify that when you print notes, only one note is printed per page
- Select the **Center Note On Page** checkbox to specify that notes always be centered on the page when printed



Set your **Paper Holder Preferences** as follows:



- Under Paper Holder opacity, drag the slider to set the desired level of transparency

### Selecting Pen Style

You can change Ink color and width of on-screen pen strokes at any time

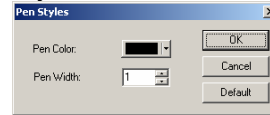
(The default pen color is black and the default width is 1)

To select the pen style:

In the Notes Manager **Configuration** menu, select **Pen Styles**

–or–

Right-click the new note and in the shortcut menu that appears, select Pen Styles



- (1) Click the arrow to the right of the current pen color to open the Pen Color list and select the color you want.
- (2) Use the arrows to the right of the current pen color width to select a pen stroke width between 1-10 (you can also type the desired width directly in the box)
- (3) Click Default in order to restore the default settings at any time
- (4) Click Cancel to return to the Note Manager or to the note without changing the current pen style settings

### NOTE:

You can also change the color and width of any pen stroke in the Note Editor by selecting an individual pen stroke or group of strokes and then in the **Tools** Menu selecting Color or Line Width.

### Setting a Reminder

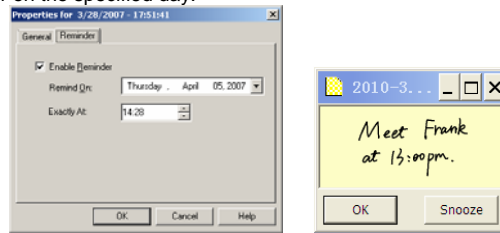
You can use notes stored on your PC to be reminders by setting an exact date and time for a selected note to automatically pop up on your screen.

To set a Reminder:

- (1) In the Note Manager, select the note or note thumbnail In the File menu, select Set Reminder –or– Right-click the note and , in the shortcut menu, select Set Reminder.
- (2) **Select the Enable Reminder checkbox**
- (3) In the Remind On list, click the arrow to the right of the list and select a date from the drop down calendar that appear

- (4) If you would like to specify an exact time for the reminder, select the Exactly At checkbox and use the arrows to change the default time or type in the desired time.

**NOTE:** If you do not select an exact time, the reminder will appear when you turn on your computer on the specified day.

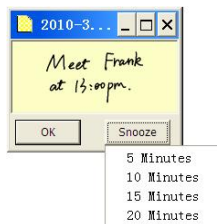


### Setting a Reminder to Snooze

When a reminder appears, you can set it to snooze so that it disappears and then pops up again within 5, 10, 15 or 20 minutes (depending on your preference).

To set a reminder to snooze

- (1) Click Snooze.
- (2) In the drop-down list, select the number of minutes you want to “snooze” until you’re reminded again.



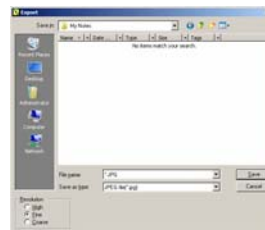
### Exporting to JPEG

You can export any note to JPEG file format, turning the note into a graphic image.

This is useful for example when you want to insert notes into documents created in other applications such as MS Word or PowerPoint.

To export a note to jpeg format:

- (1) In the Note Manager, select the note you want to export.
- (2) Right-click the note name,  
–or–



in the File menu, select Export to JPEG. The Export dialog box appears.

- (3) In Save in, select the destination file path
- (4) In the Save as type list, select JPEG.
- (5) Under Resolution, select the resolution quality
- (6) Click Save

**NOTE:** You can export multiple notes simultaneously. On the keyboard, hold down the <CTRL> key and then in the Note Manager, select the notes you want to export.

### **Exporting to a Data format file**

You can export any note to a vector format file, so that another Pocket pen tablet user can import this file into the Note Manager database

To export a note to a data file (.pegvf file):

- (1) In the Note Manager, select the note you want to export.
- (2) Right-click the note name,  
—or—  
in the File menu, select 'Export as a data file'. The Export dialog box appears.
- (3) In Save in, select the destination file path.
- (4) Click Save.



### **Importing a Data format file**

You can import any .pegvf Data format file into the Note Manager database

To import a data format file:

- (1) In the File menu, select 'Import a data file'. The Import dialog box appears.
- (2) Select the file you would like to import.
- (3) Click Open



### **Pasting Notes into Other Applications**

You can paste any saved note into another application. (The note is automatically converted into a JPEG image).

To paste a note into another application:

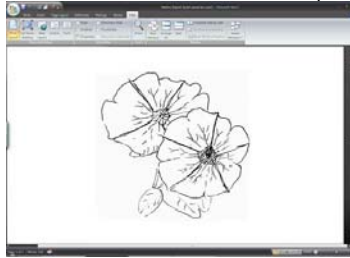
- (1) In the Note Manager, select the note or thumbnail.
- (2) In the Edit menu, select **Copy** or **Cut** (cutting will delete the note from its current location),

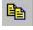


-or-

right-click the note name or thumbnail and, in the shortcut menu, select **Copy** or **Cut**.

- (3) Open the application into which you would like to paste the note.
- (4) In the open application, locate and select the Paste option.

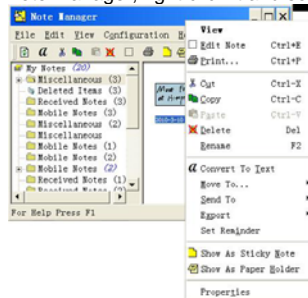


**Note:** You can also copy a note that you are currently sketching by clicking on the  button in the Note Toolbar

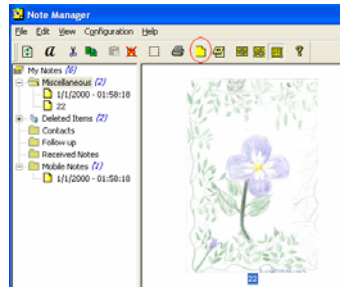
### **Creating Sticky Notes**

You can create sticky notes by doing one of the following:

- (1) Dragging notes from the Note Manager to your desktop.
- (2) Select a note in the Note Manager, right click it and select 'Show as Sticky Note'



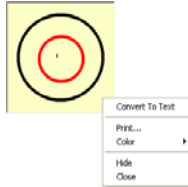
- (3) Select a note in the Note Manager, click the 'Show as Sticky Note' toolbar button



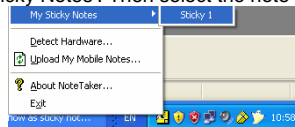
**NOTES:**

To view additional sticky note options,

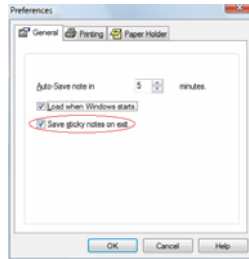
- (1) Right click on the sticky note.



- (2) Select 'HIDE' to hide a sticky note into the application tray icon
- (3) You can restore any hidden sticky note by right clicking the application tray icon, and selecting 'My Sticky Notes'. Then select the note you would like to restore.



- (4) A Sticky Note can automatically pop up after the application has been closed and re-opened, or after system reset. In the **Note Manager**, use the **Configuration** menu



### Creating Paper holder Notes

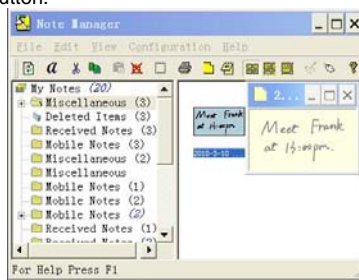
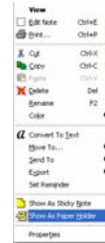
Paper holder notes can help you in many ways.

One common way is if you need to read your note and rewrite it in a text editor.

A paper holder note will always be on top, and its transparency can be adjusted

You can create paper holder note by doing one of the following:

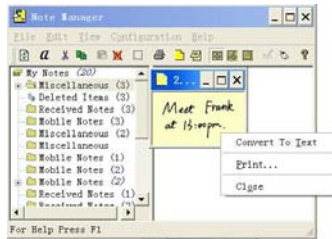
- Select a note in the Note Manager, right click it and select 'Show as Paper Holder'.
- Select a note in the Note Manager, click the 'Show as Paper Holder' toolbar button.



### NOTES:

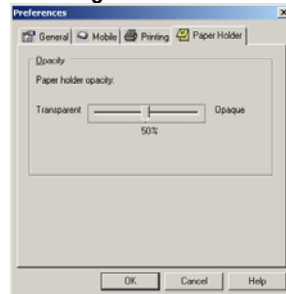
You can hide and show paper holder notes the same way you hide and show sticky note.

To view additional options, right click on the sticky note



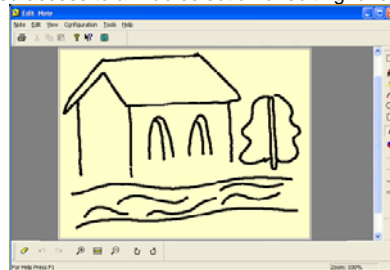
You can set the transparency to a Paper Holder.

In the **Note Manager**, use the **Configuration** menu



### **The Note Editor**

Notes can be edited at any time, whether you are still writing one, or you want to edit a note you have already saved in the Note Manager. The Note Editor contains menus and a toolbar that give you access to a wide selection of editing functions



### **Note Editor Menus**

The following table lists all menu commands available in the Note Editor, together with a description.



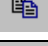


<b>Note menu</b>	
Print	Prints the selected note
Print preview	Displays the selected note as it will look when printed
Print setup	Allows you to select print options
Exit & Save/Send	Saves the edited note and closes the editing
EXIT Without Save/Send	Closes the editing application without saving any changes
<b>Edit Menu</b>	
Undo	Clears the last stroke made by the digital Pen. Clicking <i>Undo</i> again will clear the stroke made before that, and so forth.
Redo	Replaces previously undone strokes in chronological order
Cut	Cuts the selected note and saves it to the clipboard
Copy	Copies the selected note and saves it to the clipboard
Paste	Pastes whatever was last saved to the clipboard
Delete	Deletes the selected note
Clear Note	Clears the entire on-screen note
Select All	Selects all the pen strokes in the note
<b>View menu</b>	
Zoom In	Increases the note view
Zoom to fit	Restores the note view to the original size
Zoom Out	Reduces the note view
Toolbars	Allows you to select which editing toolbars you want to view (Standard, Tools, Manager)
Status bar	Allows you to view or hide the status bar at the bottom of the Notes Editor
Full screen	Opens the Notes Editor into full screen view
<b>Configuration menu</b>	
Pen/Highlight Properties	Lets you select the color and width of the Editor Pen and Highlighter
<b>Tools menu</b>	
Selector	Allows you to select any area by clicking and dragging with your mouse
Pen	Allows you to freestyle draw with your mouse
Highlight	Allows you to highlight any area by freestyle drawing with your mouse


















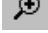
Line	Allows you to insert a line of any length
Circle	Allows you to insert a circle image of any size
Rectangle	Allows you to insert a rectangle of any size
Text	Allows you to insert type written text
Color	Allows you to pre-select or change the color of pen strokes or to highlight strokes or text
Line Width 1	Allows you to pre-select or change the thickness of any stroke to width 1
Line Width 2	Allows you to pre-select or change the thickness of any stroke to width 2
Line Width 4	Allows you to pre-select or change the thickness of any stroke to width 4
Line Width 8	Allows you to pre-select or change the thickness of any stroke to width 8
<b>Help menu</b>	
Read User Manual	Review the user manual
Check for Software Updates	To get software update programs
About NoteTaker	Displays software version information




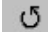
### Note Editor Toolbars

The Note Editor Toolbars provide you with quick access to the more common menu commands.

The following table lists all toolbar buttons, together with a description of their functions.

<b>Standard Toolbar</b>	
	PRINT -- Prints the selected note
	CUT – Cuts the selected note and saves it to the clipboard
	COPY – Copies the selected note and saves it to the clipboard
	PASTE – Pastes whatever was last saved to the clipboard
	ABOUT POCKET PEN TABLET – Provides you with your Pocket pen tablet version information



	FULL SCREEN – Brings the Notes Editor into full screen view
	<b>NOTE COLOR</b> – Changes the current note color.
<b>Tools toolbar</b>	
	SELECT – Allows you to select any area by clicking and dragging with your mouse
	PEN – Allows you to freestyle draw using your mouse
	HIGHLIGHT – Allows you to highlight any area by freestyle drawing using your mouse
	LINE – Allows you to insert a line of any length
	CIRCLE – Allows you to insert a circle image of any size
	RECTANGLE – Allows you to insert a rectangle of any size
	TEXT – Allows you to insert type written text
	COLOR – Allows you to pre-select or change the color of pen strokes or to highlight strokes or text
	LINE WIDTH 1 – Allows you to pre-select or change the thickness of any stroke to width 1
	LINE WIDTH 2 – Allows you to pre-select or change the thickness of any stroke to width 2
	LINE WIDTH 4 – Allows you to pre-select or change the thickness of any stroke to width 4
	LINE WIDTH 8 – Allows you to pre-select or change the thickness of any stroke to width 8
<b>Manager toolbar</b>	
	CLEAR PAGE – Clears the entire on-screen note
	UNDO- Clears the previous action
	REDO- Replaces previously undone action
	ZOOM IN – Enlarges the note view

	ZOOM TO FIT - Returns the note view to the original size
	ZOOM OUT – Reduces the note view
	ROTATE RIGHT – Rotates the entire note image 90° to the right
	ROTATE LEFT – Rotates the entire note image 90° to the left

### Editing Notes

Once a note is open in the Note Editor, you can only edit elements of the note (pen strokes, etc.) after they have been selected. Once you have selected the area you want to edit, you can delete it, change the color and/or width of the pen strokes, etc. You can also add figures and drawings into the note using the various drawing features (insert circle, line, highlight, text, etc). These new elements can also be edited after you insert them.

To start editing a note,

- (1) While working on a note, or in the **Note Manager** select the note and click the **Edit Note** button ,  
 –Or–  
 right-click the note and, in the shortcut menu, click **Edit Note**.  
 –Or–
- (2) Double click a note in the note view mode.
- (3) The Note Editor window opens displaying the selected note.
- (4) Use the **Select Area** button  in the Tools Toolbar or the **Select** option from the Tools Menu to select a particular stroke or group of strokes,  
 –or–  
 in the **Edit** menu, click **Select All** to select the entire note.
- (5) Use the edit toolbar to edit the strokes.

**NOTE:** While editing, you can still use your pen to continue sketching on the note.

### Sending Notes


You can send any note by email or over the local network. An emailed note appears as a JPEG attachment to the recipient. In order to send a note by local network, the recipient must have the Pocket pen tablet software installed and running on his/her PC. Notes can be sent by email or network from both the *Note* window and the *Note Manager*.



### Sending notes by email

The Pocket pen tablet uses your default email client to send notes as email.

To send a note immediately after you have completed it:

- (1) Click the Send Note by Email button 
- (2) A new email form opens with the note in the form of a JPEG attachment
- (3) Type in the desired recipient's email address and any desired text in the subject and body of the email
- (4) Send the email


To send a saved note:

Any saved note can be send as a JPEG or vector format file

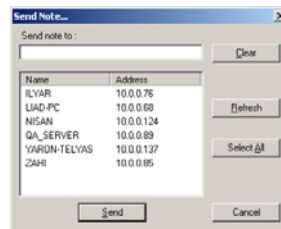
- o In the **Note Manager**, click the note name or thumbnail.
- o In the **File** menu, select **Send TO --> Email**,  
-or-  
right-click the note name or thumbnail and, in the shortcut menu that appears, select **Send TO--> E-Mail**.
- o A new email form opens with the note attached as a JPEG file.
- o Type the desired recipient's email address and any desired text in the subject and body of the email
- o Send the email

### Sending notes over the local network

To send a note immediately after you have completed it,

- (1) In the Note Window, click the Send Note to Network PC button 

- (2) In the **Send Note** dialog box, a list of all network users that have the Pocket pen tablet application installed and running automatically appears. Select the Name/IP address of the person(s) to whom you would like to send the note



-or-

click **Select All** to send the note to everyone on the list.

- (3) Click **Send**.

To send a saved note:

- o In the Note Manager, click the note name or thumbnail.

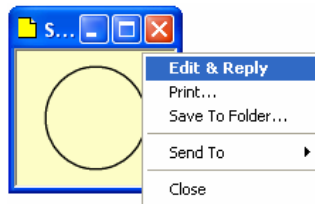
- o In the File menu, select Send To--> Network PC,  
–or–  
right-click the note name or thumbnail and, in the shortcut menu that appears, select Send To --> Network PC.
- o In the Send Note dialog box, a list of all network users that have the Pocket pen tablet application installed and running automatically appears. Select the Name/IP address of the person(s) to whom you would like to send the note  
–or–  
click Select All to send the note to everyone on the list.
- o Click Send

**NOTE:** You can select multiple recipients when sending a note via local network By selecting a name in the list, then pressing <CTRL> On the keyboard and selecting another name or names.

***Receiving notes over the local network***

Users on a local area network (LAN) such as may exist in an office environment can receive notes over the LAN.

When you receive a note, it automatically appears on your PC screen and a sound is heard.



- Right click the received note to have the following options:
  - o Replying to the sender (this includes an editing function so the user can add text and sketches)
  - o Printing the note
  - o Saving the note
  - o Setting a reminder
  - o Sending the note to other users on the network
  - o Close the Note

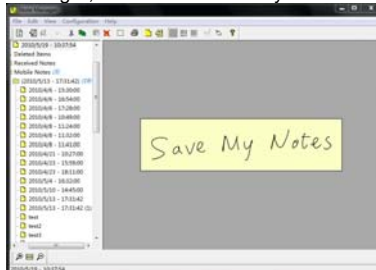
Notes received by LAN will be saved under '*Received Notes*' in the *Note Manager*.

### Convert Note to Text

You can convert your handwritten notes to texts in the following two methods.

#### Using the “Note to Text” menu (only available in Windows Vista or 7)

- (1) Open the Note Manager, select the note that you want to convert.




- (2) Click the “Note to Text” icon  from the top tool bar. The note is then converted to text. Save the converted note as you want.



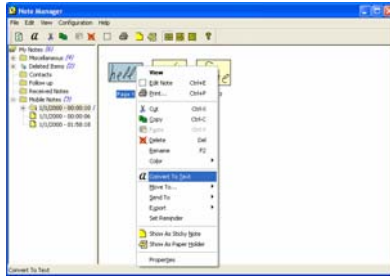
#### Using the Vision Objects MyScript® Notes (Optional)

**MyScript® Notes** is a well known character recognition engine. It can convert the notes in your Pen-Tablet to texts. You can purchase the software from its vendor if you want.

- (1) Installing MyScript® Notes. Follow the installation instructions in the software manual.
- (2) Operating MyScript® Notes. To use the **MyScript® Notes** recognition engine, please make sure you have installed Pen-Tablet Software Suite. Then, you can select a note, Notes, or a Sticky Note, and export them to the **MyScript® Notes** recognition engine.  
Exportable objects from NoteTaker to MyScript® Notes:
  - A New Note
  - A single Note from “NoteTaker Manager”
  - Multi pages Note from “NoteTaker Manager”
  - Sticky Note from “NoteTaker Manager”
- (3) Exporting objects. Use the following methods for each type of object in order to export it to **MyScript®**.
  - a. For a New Note, Click the “Convert to Text” toolbar button .



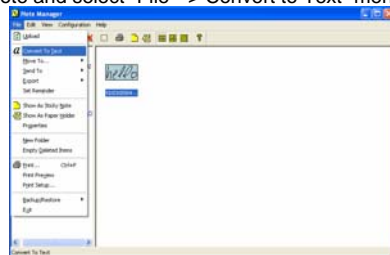
b. For A single/multi page Note from "NoteTaker Manager", right click the Note in the thumbnails area.



c. Right click the Note in the tree area.



d. Select a note and select "File --> Convert to Text" menu.



e. For sticky Note from 'NoteTaker Manager', right click the "Sticky Note" and select "Convert to Text" menu.

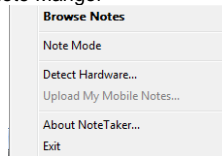




(4) Your Note will be exported to MyScript® Notes application. MyScript® Notes will be opened with your Note in the "Conversion" area. Please refer to the **MyScript® Notes** user guide for more instructions on how to use the **MyScript® Notes** application.

### **Application Tray Icon**

Right clicking the application tray icon gives you the ability to perform the following actions:

**Browse Notes** – Open the Note Manger




**Note Mode**  Or **Mouse mode**  – Toggle between the 2 options of your Digital Pen. Tray icon changes accordingly

**Detect Hardware** - Detect your hardware. If your hardware is not detected, the tray

icon changes to 

**Upload My Mobile Notes** - Upload your Notes from the Pocket pen tablet. the tray

icon changes to 

**About Pocket pen tablet** - See application details (About Dialog)

**Exit** - Exit the application

## **Chapter 5 Use Pen Tablet in Windows Vista**

The rich inking features & utilities in Window Vista enable users to take handwritten notes, convert handwriting to text, annotate documents, add electronic signatures and send handwritten emails.

With integrated **Pen-Tablet** support, digital ink technologies and handwriting recognition technologies your Pen-tablet turns into a Table PC compatible device that's practical, comfortable, intuitive and easy to use while you are on the go and it

also works well when you are at your desk..

This chapter provides basic instructions how to utilize inking and handwriting utilities in Windows Vista and Office 2007's applications. For more features and possibilities please refer to **Microsoft's User manual** and **Help**.

\* **Pen-Ink capabilities are NOT available in Windows Vista Basic.**

### **Getting started**

To start inking in windows Vista, just plug-in your **Pen-Tablet** to any available USB port, place the receiver unit at the top of the page in the middle. You are ready to go. No further installation is required to use all Windows Vista and Office 2007 applications.

Pen-Tablet can serve you as handwriting instrument as well as pointing device - a mouse.


**Note:** Make sure your Pen-Tablet is in Mouse mode.

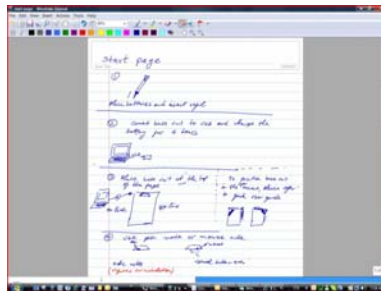


### **Windows Journal**

Windows Journal looks like a sheet of paper but it is far more flexible than a typical pad of paper. You can change pens, pen colors, highlighters and erasers, move items around on the page, make space for additional items, send the notes as email, convert handwriting to text and enjoy many more features. All of that is done by just using **Pen-Tablet** for handwriting and mouse functionalities.

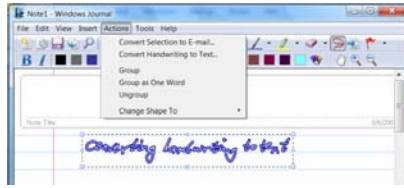
To start Windows Journal:

Click **Start** button , type **Windows Journal** in the search box, and then tap **Windows Journal** in the list of results. Alternatively, you can click **Start → All Programs → Windows Journal**.



### Conversion to text and conversion to email:

Use the Lasso to mark the conversion area. Tap Actions and choose Convert Selection to E-mail or Convert Selection to text (if a character recognition application is installed.)



### Tablet PC Input Panel

In Windows Vista, the **Tablet PC Input Panel** is the standard interface for converting handwriting to text in a Windows-based program. It's the method by which Pen-Tablet users enter text into applications that do not include a custom handwriting interface. Using Input Panel, users can insert text into website forms, word processing and e-mail applications, web browsers, and more.

### The Three Input Areas of Input Panel:

The input Panel includes three input areas for entering text: the writing pad, the character pad and the on-screen keyboard. The writing pad and the character pad convert handwriting into typed text. The on-screen keyboard works just like a standard keyboard except that the user enters text by tapping keys with a Pen-Tablet.

The following illustrations show the writing pad, the character pad, and the on-screen keyboard.



To improve personal handwriting recognition, go to **Tools** and tap **Personalize Handwriting Recognition**.

**There are three ways to open Input Panel:**

1. Tap the **Input Panel** icon, which appears when you place the pointer in a text entry area, such as the Address bar in a web browser or a text box in a dialog box.



- 
2. Tap the Input Panel tab, which appears by default on the left edge of the screen. When you open Input Panel this way, it floats on top of any open windows.

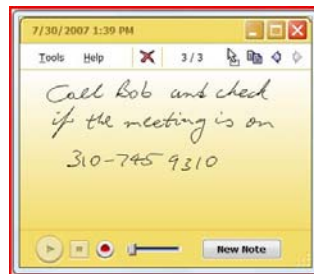


- 
3. Tap the **Tablet PC Input Panel** icon on the Windows taskbar. The Input Panel icon does not appear on the taskbar by default. To make it appear, right-click the taskbar, tap **Toolbars**, and then tap **Tablet PC Input Panel**.



**Sticky Notes**

Write down ideas and thoughts in a quick and easy way using desktop notes ("stickies").



Keep your information, quick notes, addresses, phone numbers, web links and more in one place where you can easily find it? Windows Vista can offer you different electronic notes software and freeware solutions that allows you to quickly write something down any time you need - during a meeting, lecture, searching information on the Internet, etc.



To make sticky notes open automatically at startup go to **Tools**, tap **Options** and then tap **Open at Startup**.

Open **Sticky Notes** by tapping the **Start**  button, typing **Sticky Notes** in the search box, and then tapping **Sticky Notes** in the list of results.

Alternatively: **Start** → **All Programs** → **Sticky Notes**

To keep sticky notes always visible on the desktop Tap the **Tools** menu, points to **Options** and then type **Always on Top**.

**Note:** Your notes are automatically saved when you close **Sticky Notes**

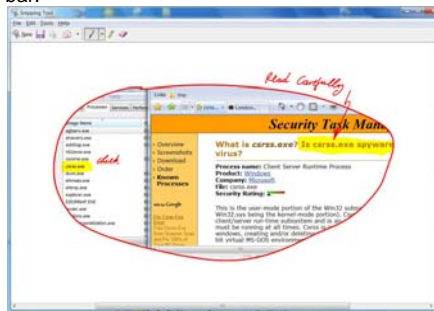
### **Windows Snipping Tool**

The program is a screen-capture tool that allows taking screenshots (called snips) of windows, rectangular areas, or a free-form area. Snips can then be annotated, saved (as an image file or HTML page), or e-mailed.

Open **Snipping Tool** by tapping the **Start**  button, typing **Snipping Tool** or just **Snipping** in the search box, and then tapping **Snipping Tool** in the list of results.

Alternatively: **Start** → **All Programs** → **Snipping Tool**

The first time you use the **Snipping Tool**, you will be provided an option to add it to your quick launch bar.



### **Pen-and-Ink functionality in Vista- Office 2007**

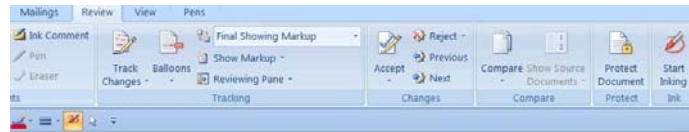
Microsoft Office 2007 and a Tablet-Pen offer new capabilities that allow you to work more naturally and efficiently. Within Office 2007, numerous applications support digital mark-up with Tablet-Pen and provide easy access to digital inking tools for intuitive collaboration in:

- Word
- Excel
- Outlook

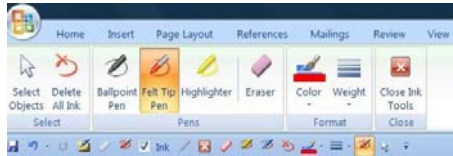
- PowerPoint
- OneNote

Writing with a pen is a particularly efficient and natural way to comment on an existing document and to capture rough thoughts that are emerging in real time.

Word, PowerPoint and Excel have a **Review** tab with a **Start Inking** button that provides an **Ink Tools** menu. This menu includes tools such as: **felt tip pen**, **ballpoint pen**, **highlighter**, and **eraser**, as well as options to select the **Ink Color**.



**Ink Tools**

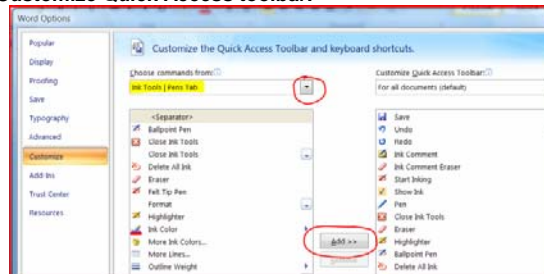


**Quick Access Toolbar**

The **Ink Tools** allow you to markup and edit documents in a natural way. In Word, easily mark-up copy and make noticeable edits.

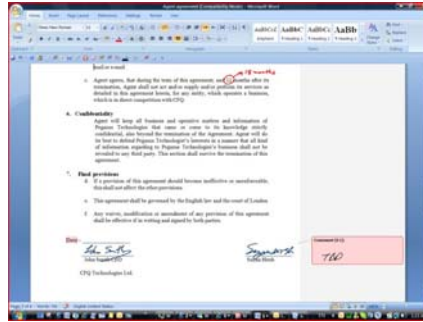
To create **Quick Toolbar**, please follow the instructions below:

1. Place the cursor on the bar next to **View** and right click the mouse. **Tap Customize Quick Access toolbar.**

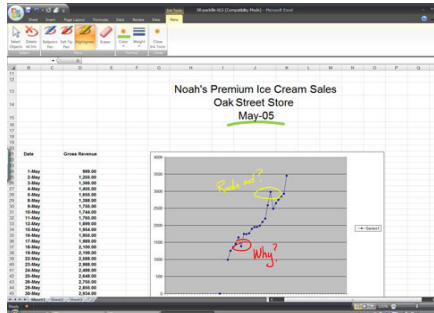


2. Choose **Ink Tools Pens Tab** by taping the arrow at **Choose command from** (see yellow highlight)
3. Add ink and pen icons at your will by using **Add** button

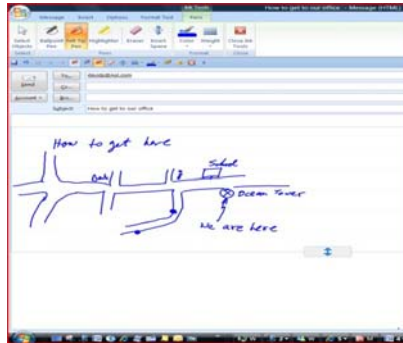
**Selected examples for using digital ink in Office 2007 Applications  
Signatures, Ink Comments and annotation in Word 2007**



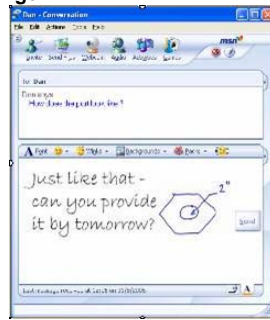
**Inking Excel 2007**



**Drawing in Outlook 2007**



## Drawing in on-line messenger



For more information about the various available options of using Pen-Tablet, inking and handwriting, please refer to Microsoft manuals and Help service.

## Chapter 6 Using in Mac OS

### *Installing the Note Manager for Mac software*

The following procedure guides you through installation of the Note Manager for Mac.

1. Click on the NoteTaker installer icon (NoteTaker. pkg). The NoteTaker Installer opens (a standard Mac installer):



Figure 1: NoteTaker Installer

2. Click Continue. The Installer advances to the Destination Selection step. In this step, you are asked to choose the location (usually your Mac hard drive) where you want to install the Note Manager software. When you select (click on) your preferred hard drive, the Installer confirms your selection:



Figure 2 Installer showing the Destination Select stage

3. Click Continue. The Installer advances to the Installation Type stage. In this stage, you confirm that you want to perform a standard installation of the Note Manager software on the hard drive you selected.

**Notes:** *Performing a standard installation will install the software directly into your Applications folder on your Mac's hard drive.*

*If you want to change the location to which the software will be installed, clicking Change Install Location will return you to the previous step, Choose Destination Location.*

4. Click Install. The Password dialog opens.
5. Enter your user password and click OK. The Note Manager software is installed on the drive you selected and the Install Succeeded message is displayed on the Installer.
6. Click Close to close the Installer and complete the installation.

### **Using the NoteTaker Preferences Tool**

#### **About the Preferences Tool**

When you use your Digital Pen to write text, everything you write is saved as a series of TIFF (Tagged Image File Format) images in the base memory unit. Before you can work with your text on your Mac, you first need to transfer the TIFF images from the Pen-Tablet to your Mac's hard drive. When you connect the Pen-Tablet to a USB port on your Mac, your text is automatically transferred directly from the Pen-Tablet to your Mac.

Before you can start transferring your text from the Pen-Tablet, you first need to set preferences on your Mac. By setting preferences, you decide:

- where on your Mac's hard drive you want to save the TIFF images;
- whether you want to erase the TIFF images from the Pen-Tablet after you have imported them to your Mac.

You set these preferences using the **NoteTaker Preference Tool**.

### Setting Preferences with the NoteTaker Preference Tool

The following procedure describes how to set preferences using the NoteTaker Preference Tool:

1. Click on the NoteTaker Preferences icon. The NoteTaker Preferences dialog opens:

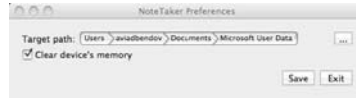


Figure 3: NoteTaker Preferences dialog

The NoteTaker Preferences dialog consists of the following elements:

- The **Target Path** – displays the path to the location on your Mac's hard drive where TIFF images from the Pen-Tablet will be saved.
  - The **Clear Device Memory** checkbox – if this checkbox is checked, the Pen-Tablet's memory will be cleared (erased) after you upload TIFF images to your Mac. If the checkbox is unchecked, the TIFF images will remain saved on the Pen-Tablet after you have uploaded them to your Mac.
2. The first preference you need to set is the location on your Mac where TIFF images will be saved when you transfer them from the Pen-Tablet. The Target Path displays the default location to which the TIFF images will be saved. To choose a different path, click the ellipsis button ("...") to open the Finder window:

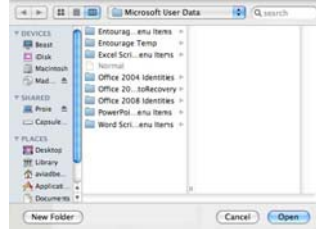


Figure 4: NoteTaker Preferences Finder window

3. Choose where on your Mac you want to save TIFF images by clicking on the relevant location in the left hand column, and then click Open. The Finder window closes and the new Target Path is displayed in the NoteTaker Preferences dialog.
4. If you want to clear the Pen-Tablet's memory each time you upload TIFF images from it, check the Clear Device Memory checkbox. To leave the TIFF images on the Pen-Tablet after they are uploaded, leave the checkbox unchecked.
5. To save your preferences and close the NoteTaker Preferences dialog, click Save.

When you next connect the Pen-Tablet to your Mac, your images will be uploaded according to the preferences you have set.

6. To close the NoteTaker Preferences dialog without saving any changes, click Exit.

### **Pen-Tablet operation with Mac**

1. Use the Pen-Tablet to capture and save your notes while you are away from your Mac, in meetings or lectures.
2. Connect the Pen-Tablet to your Mac, to upload the saved notes. The notes are saved in TIFF format. Double click on the desired TIFF file, in order to view the note.



3. While being connected to the Mac via the USB port, the Pen-Tablet can be used as a Mouse and as a Tablet input device for Mac ink applications. Use the digital pen in applications such as iWork'08. You can write handwritten text, on-line, and the Mac will convert it into text. The feature is available iWork Pages (word processor), iWork Keynote (presentations) and iWork Numbers (spreadsheets).



The Digital Pen can be also used for drawings inside applications such as Adobe Illustrator, Photoshop, etc.

## Chapter 8 Using the Photo Sketcher

The provided CD contains another useful application - Photo Sketcher. You can use it to add annotations on top of any picture. For details about the application, see the Photo Sketcher Software User Guide in the CD.

## Chapter 8 Taking Care of Your Pocket pen tablet

### Storing your Pocket pen tablet

- Keep your Pocket pen tablet away from liquids and direct sunlight at all times.
- Always store your unit in protected packaging or in the original box.
- Severe shock can cause degradation in performance. Take precautions not to drop the memory Unit or Pen onto hard surfaces.

### Cleaning your Pocket pen tablet

- Clean your Pocket pen tablet using a soft cloth.
- Special care must be taken not to insert sharp pointed objects into the ultrasonic transmitting and receiving units.

## Chapter 9 Troubleshooting

Problem	Possible Cause	Solution
The LCD displays nothing when I power on the base unit	Battery of the base unit is too low	Connect the base unit to a computer or use the charger to charge the battery
The battery icon does not blink during charging	The charger/USB cable is not connected properly	Reconnect the charger or USB cable
	The charger/USB cable is damaged	Replace the charger or USB cable with a new one
The pen stroke is invisible on the screen	The Note Manager does not run	Run the Note Manager application provided with the package
	The hardware (pen or base unit) is not installed correctly	Re-install the hardware



	The pen is in Mouse mode	1. Press the ON/OFF button on the base unit to switch to Pen mode(refer to the user manual). 2. Set the pen as Pen mode in Note Manager (refer to the user manual).
	The distance between the pen and the base unit is beyond the area of A4 paper	Make sure the distance between the pen and the base unit is within the area of A4 paper.
	The digital pen's battery is too low	Replace the pen's battery
The pen stroke is messy or discontinuous.	There is barrier between the pen and the base unit.	Remove the barrier
	Your handhold is so close to the pen tip that the transmitting at the pen tip is blocked by your finger.	Refer to the user manual for instruction of correct handhold
	The battery of the pen is too low	Replace the battery
	Your writing is too gentle.	Impose more strength on your writing.
	The writing surface is not smooth or the paper is not spread well.	Make the writing surface is smooth
The mouse is dead	The pen's battery is too low	Replace the battery
	The pen is not in Mouse mode	1.Press the ON/OFF button on the base unit to switch to the Mouse mode.(refer to the user manual) 2.Set the pen as Mouse mode in Note Manager(refer to the user manual)
	The distance between the pen and the base unit is beyond the area of A4 paper.	Make sure the distance between the pen and the base unit is within the area of A4 paper.
The orientation of the pen strokes does not match the actual writing or drawing.	Setting your base unit orientation as the same to your actual placement.	See "Setting your base unit orientation preferences" section in the user manual.

## Chapter 10 Technical Specifications

Item	Description
System Requirement	<ol style="list-style-type: none"> <li>1. Minimum 50MB available hard disk space</li> <li>2. Minimum 128MB RAM</li> <li>3. 32 bit color quality</li> <li>4. Screen resolution of 1024x768 pixels</li> <li>5. Available USB port</li> <li>6. Microsoft® Windows 2000 (SP4), Microsoft® Windows XP (SP2), Microsoft® Vista, Windows 7 or later version.</li> </ol>
Work Mode	Note and Mouse
LCD Screen	132X32 lattice
Battery Type	Rechargeable lithium-ion battery
Battery Life	About 6 hours
Charge Time	About 3.5 hours
Coverage area	A4
Capacity	100 A4 pages
Storage Temp*	-20°C ~ + 65°C
Ambient Temp*	5°C ~ + 55°C
Operation Relative Humidity*	20% ~ 90% (40°C)
Storage Relative Humidity*	20% ~ 93% (40°C)

This device complies with Part 15 of the FCC Rules. Operation is subject to the following two conditions: (1) this device may not cause harmful interference, and (2) this device must accept any interference received, including interference that may cause undesired operation.

changes or modifications not expressly approved by the party responsible for compliance

could void the user's authority to operate the equipment.

NOTE: This equipment has been tested and found to comply with the limits for a Class B digital device, pursuant to Part 15 of the FCC Rules. These limits are designed to provide reasonable protection against harmful interference in a residential installation. This equipment generates, uses and can radiate radio frequency energy and, if not installed and used in accordance with the instructions, may cause harmful interference to radio communications. However, there is no guarantee that interference will not occur in a particular installation. If this equipment does cause harmful interference to radio or television reception, which can be determined by turning the equipment off and on, the user is encouraged to try to correct the interference by one or more of the following measures:

- Reorient or relocate the receiving antenna.
- Increase the separation between the equipment and receiver.
- Connect the equipment into an outlet on a circuit different from that to which the receiver is connected.
- Consult the dealer or an experienced radio/TV technician for help.