

YouPro 优光®

Camera Wireless Remote Control

YP-860 II

Instruction Manual



Install and use

The way of install the battery of transmitter



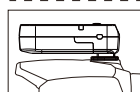
1. Open the battery cover
2. Install the battery in right way + and -
3. Close the battery cover

The way of install the battery of receiver



1. Open the battery cover
2. Install the battery in right way + and -
3. Close the battery cover

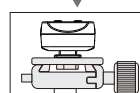
Fixed the receiver



1. Put the receiver on the camera hot shoe



2. Fixed the receiver in camera accessory



3. Fixed the receiver in tripod
 - Put the receiver screw in tripod quick release plate
 - Put the quick release plate in tripod
- ⚠ Caution: ensure the crew lock, or the receive loose.

Overview:

Thanks so much purchase Youpro product, YP-860 II is high performance wireless remote control. Please read careful and understand the way of use camera, before use Youpro wireless remote control, in order to know better the way of use our product.

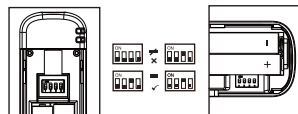
Caution before use:

- ⚠ Make sure the camera is power off before install the device of the YP-860RX II, when the product connect the device, please not pull the cable.
- ⚠ It is a electronic product accessories, some of the environment condition may affect the working, however it is much less probability of this condition, please don't worry.
- ⚠ This component can't be strong vibration, or may lead to product failure.
- ⚠ Please turn off the battery if such long time won't use this product.
- ⚠ Please not put our product in high tempura area, such as a closed car under direct sunlight, the control panel and the other high-temperature area.
- ⚠ Please keep dry, do not use wet hand contact with the product, the product must not be immersed in water or exposed to rain, and this may lead to not work properly.
- ⚠ Please not use flammable gases in violation of this warning may cause an explosion or fire.
- ⚠ Because of this product is included battery, please strictly follow the instruction for operation. Otherwise it may cause an explosion, fire or personal

Use the product:

Channel switch

Keep the transmitter and receive in same channel, so the receiver can receive the signal.



Turn on the power of receiver (YP-860RX II)



Press 2 second of power, the read lamb will flashing, the receiver in working

The function of transmitter setting



“**Single shooting**”: Set the camera in single shooting mode, set the transmitter in single shooting mode via range button, half press the button (the receiver and transmitter will flashing) Full press the shutter button, the red lamb flashing mean all in working

“**Continuous shooting**”: Set the camera in the mode of continuous mode: the range of button in continues mode: half press the activate the auto zoom; Full press the shutter button and not release, camera will in continues mode.

“**BULB**” **Bulb shooting**: Set the range of shutter button in Bulb mode. Half press the shutter button in zoom mode. Full press the shutter release and tight, the red lamb will flashing one time, according to the flashing time to confirmed the shutter release work time, press the shutter button mean the bulb mode closed.

“**Delay shooting**”: Set the range of shutter button in delay shooting mode, half press the shutter button active the auto zoom mode. Full press the shutter button, 4 second shooting mode in working, will shooting after 4 second.

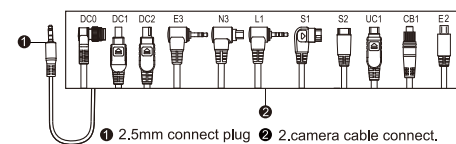
Function Introduction:

- ◆ Adopt free global FSK2.4 signal, more stable, the operate distance can reach more than 100m
- ◆ Use the wireless technology, it can remote the camera which connect the suitable connect cable.
- ◆ We designed of low power consumption.
- ◆ Support chance different cable to work with different camera.
- ◆ Support single shooting, 1 continuous shooting, Bulb shooting, delay shooting.

Included Items:

- ◆ Please the below items in the package, please contact the dealer if there is missed some items.
- | | | |
|-----------------------------|-------|-----|
| 1. Transmitter (YP-860TX) - | ----- | 1pc |
| 2. Receiver (YP-860RX II) - | ----- | 1pc |
| 3. Connect cable - | ----- | 1pc |
| 4. Manual - | ----- | 1pc |

Camera connect cable introduction:



1. 2.5mm connect plug 2. camera cable connect.

Icon Function

- | | | | |
|--|-----------------|--|--------------------------|
| | FSK 2.4 GHz | | Operation Distance 100m+ |
| | Single Shooting | | Continuous Shooting |
| | Bulb Shooting | | 16 Channel |
| | Delay Shooting | | |

Product Specification:

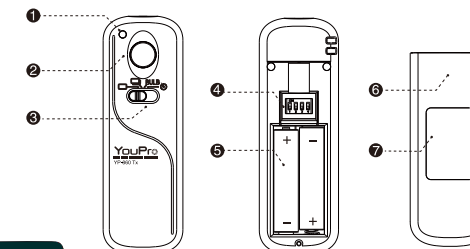
- System mode: ----- FSK 2.4G
- Operation Channel: ----- 16th
- Operation distance: ----- 100m+
- Battery: ----- AAA*4
- Shutter release: ----- Half press, full press
- Shutter connect port: ----- 2.5mm connect port
- The transmitter standby: ----- 1000hours
- The receiver standby: ----- 400hours
- The dimension of transmitter: ----- 33.5mm*99mm*15.3mm
- The dimension of receiver: ----- 70.5mm*38mm*25mm

Above is the manual of YP-860 II. If you need any help, please contact our dealer Or contact: <http://www.hkyoupro.com>

Instruction of product component

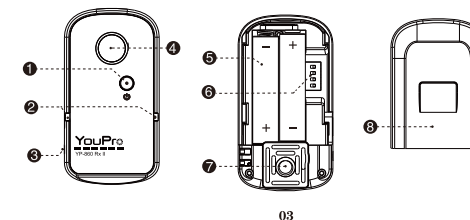
Transmitter

- 1 Indicator light
- 2 Shutter button
- 3 Single/continues/BULB/delay shooting range button
- 4 Channel switch
- 5 AAA battery
- 6 Battery cover
- 7 Product sticker



Receiver

- 1 Power button
- 2 Indicator light
- 3 2.5mm signal import connect port
- 4 Shutter release button
- 5 Battery chamber
- 6 Channel switch
- 7 Hot-shoe
- 8 Battery cover



Scan it, you can know more...

FCC Statement

This device complies with part 15 of the FCC rules. Operation is subject to the following two conditions: (1) this device may not cause harmful interference, and (2) this device must accept any interference received, including interference that may cause undesired operation.

Caution: Changes or modifications not expressly approved by the party responsible for compliance could void the user's authority to operate the equipment.

NOTE: This equipment has been tested and found to comply with the limits for a Class B digital device, pursuant to part 15 of the FCC Rules. These limits are designed to provide reasonable protection against harmful interference in a residential installation. This equipment generates and can radiate radio frequency energy and, if not installed and used in accordance with the instructions, may cause harmful interference to radio communications. However, there is no guarantee that interference will not occur in a particular installation. If this equipment does cause harmful interference to radio or television reception, which can be determined by turning the equipment off and on, the user is encouraged to try to correct the interference by one or more of the following measures:

- Reorient or relocate the receiving antenna.
- Increase the separation between the equipment and receiver.
- Connect the equipment into an outlet on a circuit different from that to which the receiver is connected.
- Consult the dealer or an experienced radio/TV technician for help important announcement

Radiation Exposure Statement

The device has been evaluated to meet general RF exposure requirement. The device can be used in portable exposure condition without restriction.