

## Modem setup manual

1. **PC requirement:** must have a Serial COM , Operation System can use Windows 98 or Windows 2000.
2. Connect PC and PIP900 modem

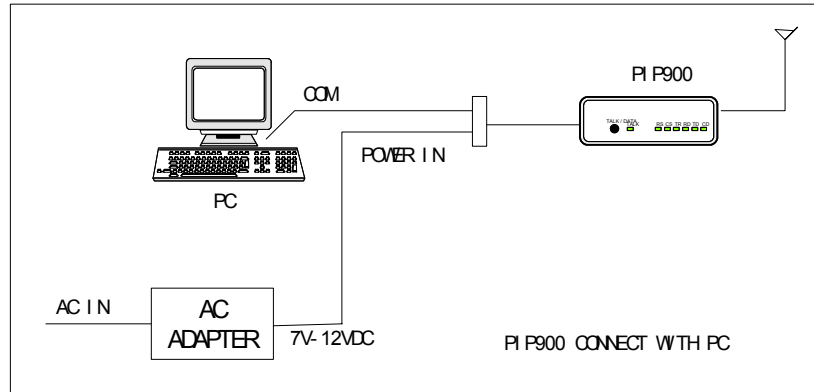


diagram 1: Connect PC and PIP900 modem

3. Start modemsetup software

There are two dialogs in the modemsetup software. The first dialog is **SETUP** (diagram 2 and diagram 3). This dialog used to setup COM parameter. After finished set COM parameter, push the Connect[C] button to connect the PIP900 modem. The second dialog is **Test Transmit** (diagram 3). This dialog used to select Transmit Power, Modulate Data kinds and Transmit Duty. If you want to output Max Power, please select Power level 4(MAX). Operation Step:

- a. Connect PC and PIP900 use special cable.
- b. In **SETUP** dialog select the COM (COM1 or COM2 etc.) then push the Open[O] button to open COM port, If success to connect the PIP900 modem, you can change to the **Test Transmit** dialog to test the modem transmit functions.
- c. In **Test Transmit** dialog, select Power Level 4(Max) in functions window. You may change Modulation kinds and Transmit Duty value then select Send button to send command to PIP900. (Note: items means in the Modulation kinds, only 1 means positive frequency deviation, only 0 means negative frequency deviation, center means center frequency, PN9 scramble means use PN9 modulation data, dynamic frequency use to test dynamic frequency deviation)
- d. **The continuous transmission of a modulation carrier (PN9 modulation or dynamic frequency with fixed Data modulation) for longer periods when you set the Duty\_off to 0. but you can't change the parameters again in this mode, till you reset the pip900 modem(by power down).**
- e. The item **others** may not use.

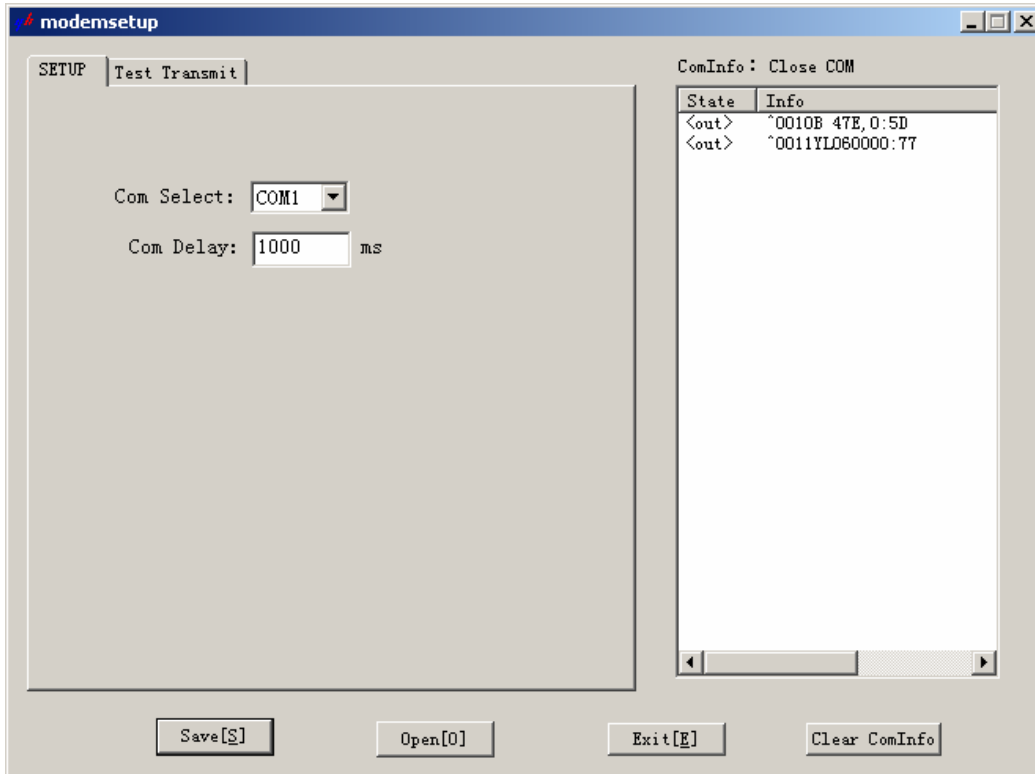


diagram 2:SETUP menu 1

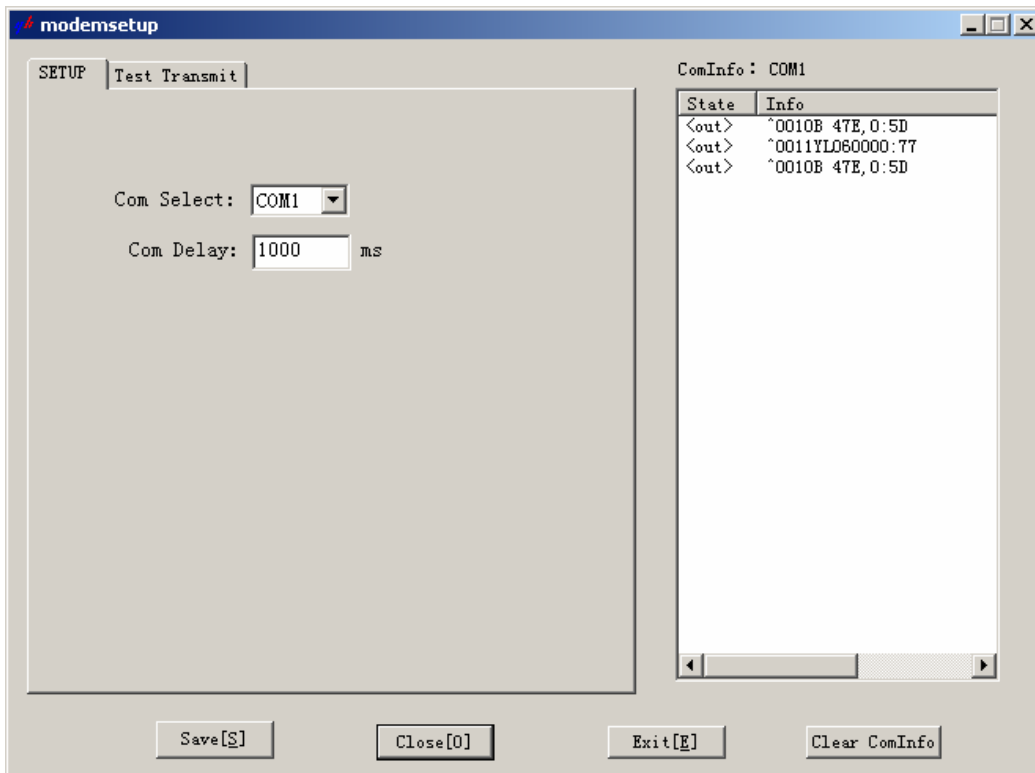


diagram 3 : SETUP menu 2

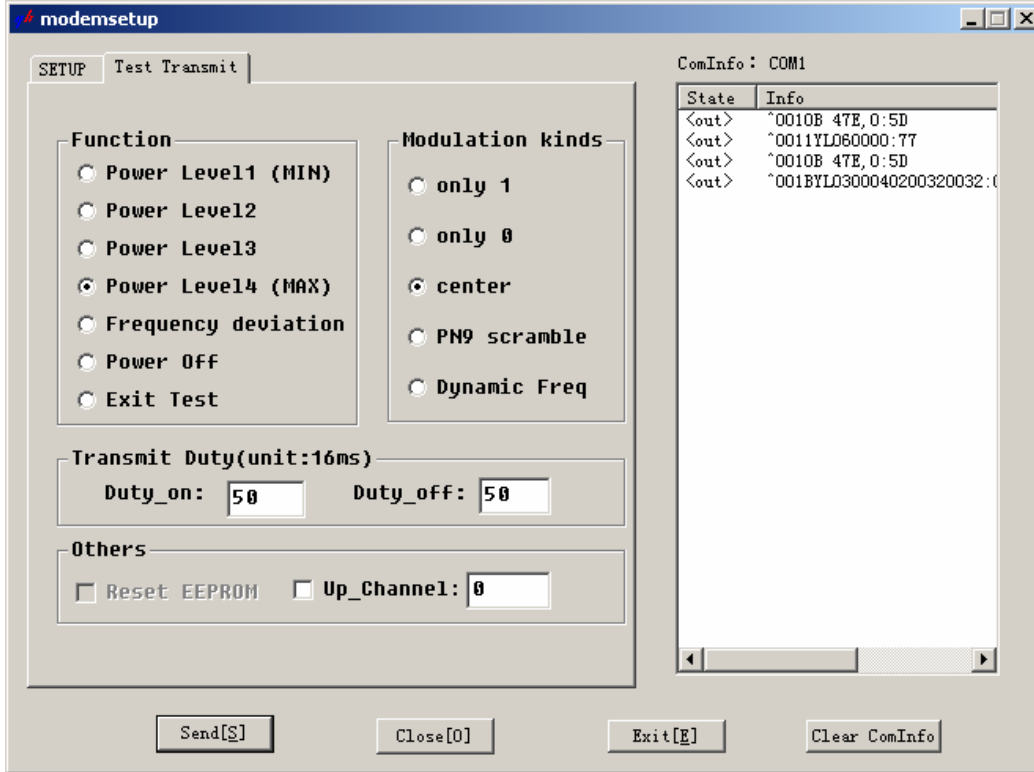


diagram 4:Test Transmit menu

**FCC Part 2 certification** requires all integrated products to have routine environmental evaluation for radio-frequency (RF) exposure prior to equipment authorization or use in accordance with FCC rules 2.1091 and 2.1093 and FCC Guidelines for Human Exposure to Radio Frequency Electromagnetic Fields, OET Bulletin 65 and its Supplement C.

For “**mobile or fixed devices**”, defined as transmitting devices designed to be generally used such that a separation distance of at least 20 cm is maintained between the body of the user and the transmitting radiated structure, Maximum Permissible Exposure (MPE) limits may be used with field strength or power density limit of 0.597 mW/cm<sup>2</sup> (at 896 MHz).

"To satisfy FCC RF exposure requirements a separation distance of 20 cm or more should be maintained between the antenna of this device and persons during device operation. To ensure compliance, operations at closer than this distance is not recommended."

#### **“Regulatory Notice of Compliance**

This equipment has been tested and found to comply within the limits for a Class B digital device, pursuant to Part 15 of the FCC Rules. These limits are designed to provide reasonable protection against harmful interference in a residential installation.

This equipment generates, uses, and can radiate radio frequency energy and, if not installed and used in accordance with the instructions, may cause harmful interference to radio communications. However, there is no guarantee that interference will not occur in a particular installation. If this equipment does cause harmful interference to radio or television reception, which can be determined by turning the equipment off and on, the user is encouraged to try to correct the interference by one or more of the following measures:

- Reorient or relocate the receiving antenna.
- Increase the separation between the equipment and receiver.
- Connect the equipment into an outlet on a circuit different from that to which the receiver is connected.
- Consult the dealer or an experienced radio/TV technician for help.”