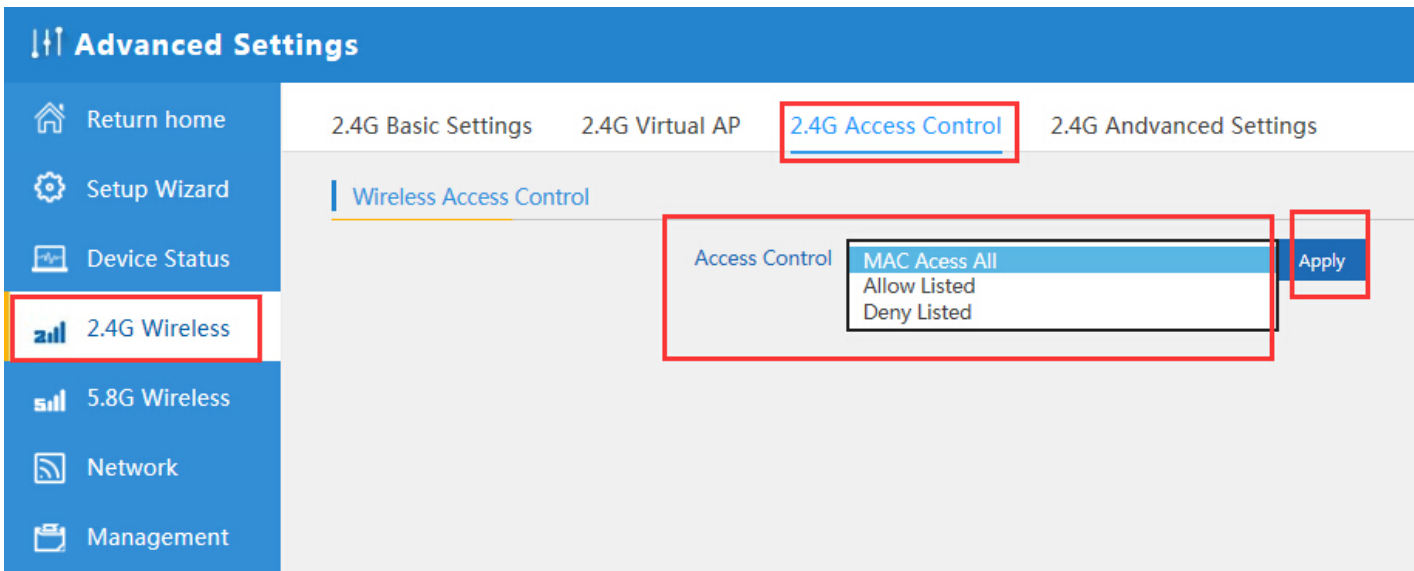


P35 Virtual AP

**2.4G Access Control:** Mainly show MAC allow or deny:



P36 MAC Access Control

**2.4G Advanced Settings:**

In this page, will show the regional, RF Power, Max user access...

**Advanced Settings**

- Return home
- Setup Wizard
- Device Status
- 2.4G Wireless**
- 5.8G Wireless
- Network
- Firewall
- Management

2.4G Basic Settings   2.4G Virtual AP   2.4G Access Control   **2.4G Advanced Settings**

**2.4G Advanced Settings**

Regional: U.S.A (Channel(1-11))  
 MODE: 802.11N/G  
 RF Output Power: 100%  
 Packet Threshold: 2346 (256-2346)  
 RTS Threshold: 2346 (256-2346)  
 Ack Timeout control: 64 (0-255)us  
 Beacon interval: 100 (100-1000)ms  
 MAX User: 64 (Range 0-64 0 not limited)  
 Coverage Threshold: -90 (-65dBm~-90dBm)

Aggregation  ON   Short GI  ON   User isolation  OFF

**P37 Advanced Setting**

**5.8G Wireless Setting:** Almost same as 2.4G Wireless:

**Advanced Settings**

- Return home
- Setup Wizard
- Device Status
- 2.4G Wireless
- 5.8G Wireless**
- Network
- Firewall
- Management

**5.8G Basic Settings**   5.8G Virtual AP   5.8G Access Control   5.8G Advanced Settings

**Wireless Basic Settings**

Wireless Status  ON   5G wireless analyzer  
 SSID: Wireless 5.8G  
 Broadcast SSID:  Disable  Enable  
 WMM:  Disable  Enable

**Channel**

Band Width: 40MHz  
 Channel: \* 5.765 GHz (Channel 153)

**Encryption**

Encryption: WPA/WPA2PSK\_TKIPAES  
 Key: 66666666

**P38 5.8G Wireless Setting**

**Network setting:**

In this page, mainly to show the LAN setting and VLAN as follow:



## P40 Tag VLAN Setting

### Management:

In this part, show the system time, Logs, upgrade firmware, system, user info.

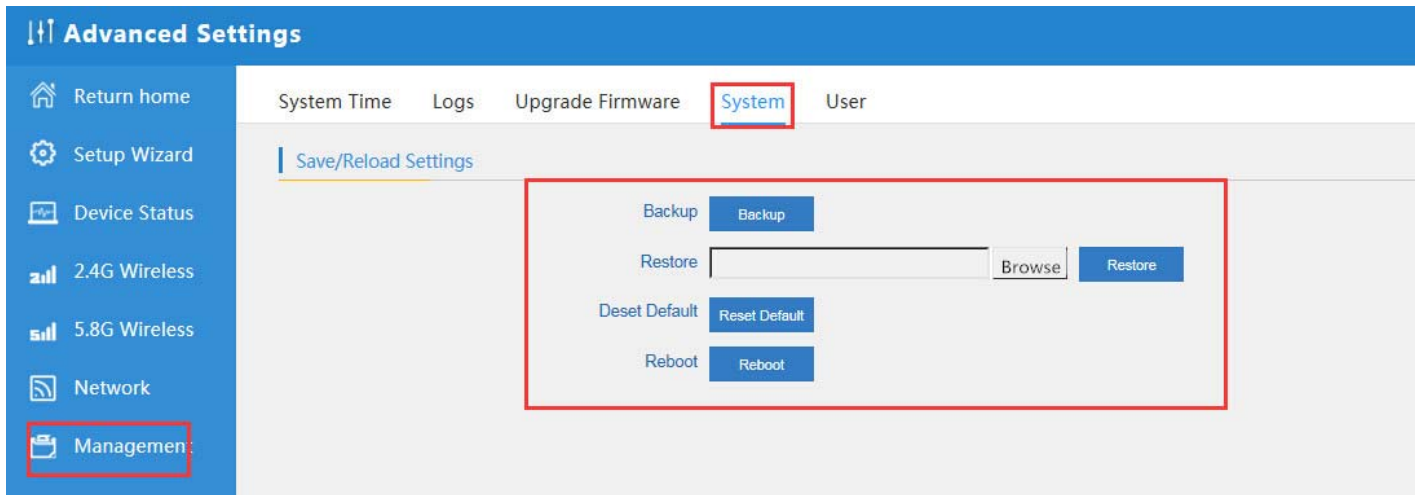
And we show System time, how to upgrade firmware and system page to users:

The screenshot shows the 'Advanced Settings' interface. On the left is a navigation menu with 'Management' highlighted. The main content area has a sub-menu with 'System Time', 'Logs', 'Upgrade Firmware', 'System', and 'User'. The 'System Time' page is active, displaying the current system time as '2015-10-30 11:16:34' and a 'Sync with host' button. Below this are three dropdown menus: 'Choose Time Zone' set to 'United States', 'NTP Server' set to 'time.windows.com', and 'Equipment timing' with an unchecked checkbox and 'Auto restart' set to '23:00'. An 'Apply' button is at the bottom.

P41 System Time

The screenshot shows the 'Advanced Settings' interface with 'Upgrade Firmware' selected in the sub-menu. The 'Management' menu item is also highlighted. The 'Upgrade Firmware' page displays the current 'Software Version' as 'XD3200-AP-V2.0-Build20151210202321'. Below this is a 'Choose File' input field with 'Browse' and 'Upgrade' buttons. A red-bordered note box contains the text: 'Note do not power off the device during the upload because it may crash the system!'. The 'Management' menu item is labeled '1st', the 'Upgrade Firmware' sub-menu item is labeled '2nd', the 'Browse' button is labeled '3rd', the 'Upgrade' button is labeled '4th', and the note box is labeled '5th'.

P42 Firmware Upgrade

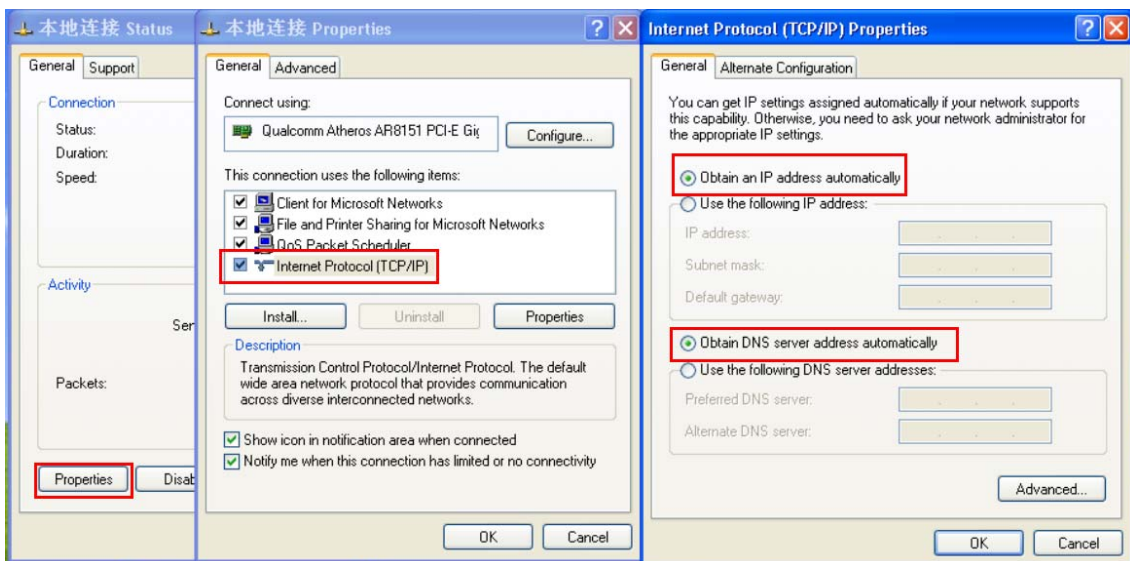


P43 System info

## 4<sup>th</sup> Share Internet and Obtain IP address automatically

Set computer's TPC/IP as [Obtain an IP address automatically](#), [Obtain DNS server address automatically](#) as following picture showed.

the computer will obtain the IP address from router or base station to get Internet.



**Trouble Shooting:**

F 1 The Failure phenomenon and solution

Failure phenomenon	Solution
SYS Indicator off	Pls make sure the PoE module connection is right. POE Port connect with AP, LAN port connect with computer
Can't land to Wireless AP through Web page	Pls check the IP address of computer and Wireless AP to see whether they are in same networking segment, The method is click "start"- "Run" input "cmd", ping 192.168.188.253 to test the Wireless AP connectivity. Reset Wireless AP and load it again; Pls make sure the IP address 192.168.188.253 is not occupied by other device in Wireless AP's networking; Check computer and cable problem, recommend to use 10/100M UTP unshielded cable; Clean up Arp binding from "Start"- "Run" input "cmd" arp -d Clean the IE Brower's temporary files and Cache file.
Wireless AP can't connect with AP (the status display unconnected)	Try to scan the available wireless networking again; Make sure the Wireless AP's wireless standard (11b/g/n, 2.4G) is correct; The Security and passwords are matched between Wireless AP and AP; The signal strength of AP is too weak to connect, should be more than -75dBm;
Can't scan the wireless AP	Scan it several times more; Make sure there are 5G signal existed. Reset the Wireless AP, scan it again after Wireless AP restart;
The connection of Wireless AP and AP is success, but the computer can't share internet	Pls Check the computer's IP address and DNS setting. If it is dynamin, set the network card as automatically obtain. If it is static IP, pls contact with ISP for correct IP address and DNS address.
How to Reset Wireless AP	Press the "Reset" button more than 15 seconds after power on. The Wireless AP will restore factory default after the Wireless AP restart.

**Note:**

\*. This device complies with Part 15 of the FCC Rules. Operation is subject to the following two conditions: (1) This device may not cause harmful interference, and (2) This device must accept any interference received, including interference that may cause undesired operation.

Changes or modifications not expressly approved by the party responsible for compliance could void the user's authority to operate the equipment.