

11Mbps Wireless LAN Compact Flash Adapter

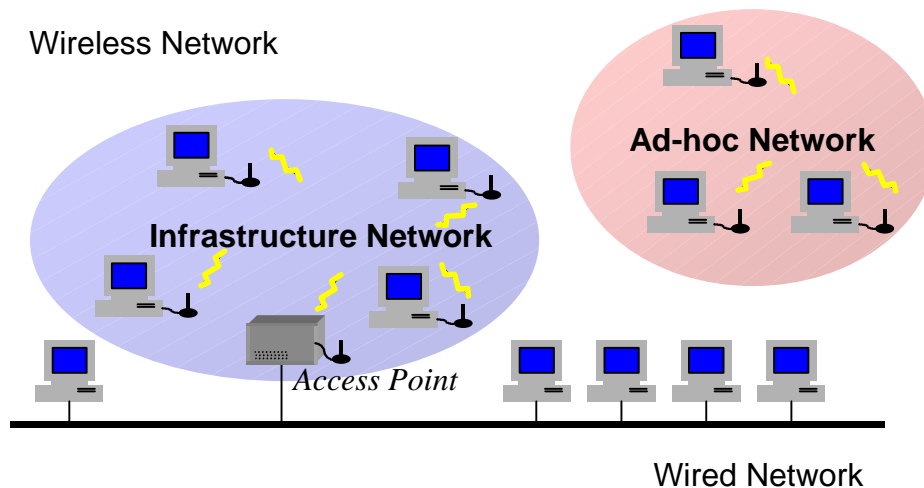
Quick Installation Guide

Version 1.0.0

Network Configuration

The 11Mbps Wireless Compact Flash Adapter provides you an easy and fast way to access your wireless and wired network. The Wireless Compact Flash Adapter, which utilizes the latest advancement of PC industry – Compact Flash technology, allows you to install and use the card reader easier than ever before.

The 11Mbps Wireless Compact Flash Adapter can be operated in Ad-Hoc and Infrastructure network configurations. *Ad-Hoc mode* allows wireless stations to join a Basic Service Set (i.e., peer-to-peer mode, without access point). *Infrastructure mode* allows wireless clients to join an Extended Basic Service Set (i.e., connect to access point)



Package Content

11Mbps Wireless Compact Flash Adapter x 1

Software Floppy Disk x 1

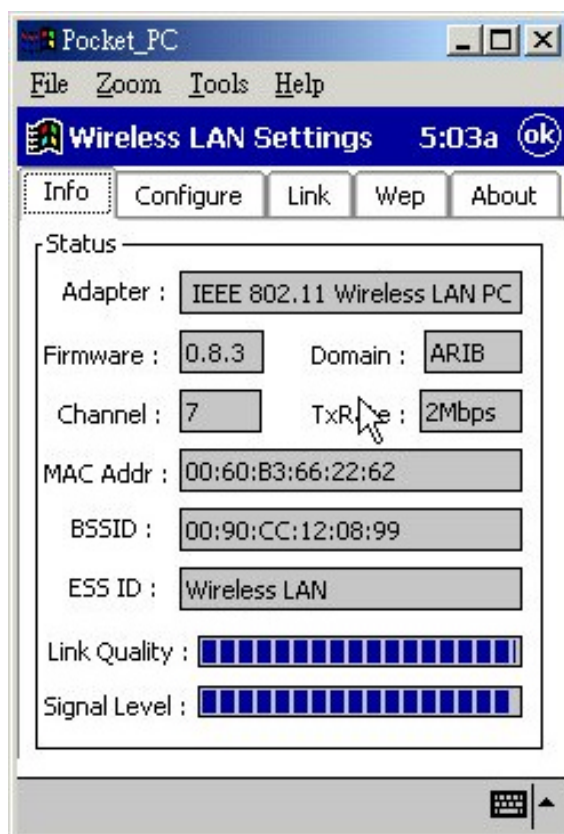
Quick Installation Guide x 1

11Mbps Wireless Compact Flash Adapter Installation under CE 3.0

1. Run the “**Setup.exe**” utility.
2. Connect the 11Mbps Wireless Compact Flash Adapter to your PDA. The PDA will auto-detect the Wireless Compact Flash Adapter and an “**Unrecognized Card**” windows shows up to prompt you to enter the driver name. Enter “**wlan11**” and click **OK** to continue.
3. Assign an IP address to your Wireless Compact Flash Adapter. You may choose to give a fixed IP address or have the Wireless Compact Flash automatically obtain an IP address from your DHCP server.

Use of Wireless LAN Utility

The 11Mbps Wireless LAN Utility provides the following items for you to configure the 11Mbps Wireless Compact Flash Adapter. To run the utility, go to **Start→Settings**. Go to the **System** tab, and click the “**Wireless LAN Settings**” icon. The utility interface will then appear and configuration can be made.

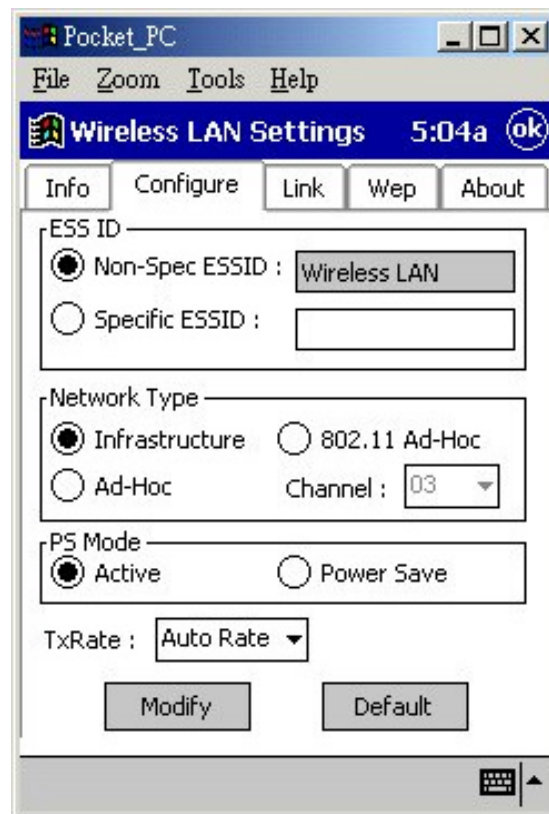


Info:

This item shows the current information on the 11Mbps Wireless LAN Compact Flash Adapter such as Adapter Name, Firmware, Domain, Channel, Tx Rate, MAC Address, BSSID, ESSID, Link Quality and Link Quality.

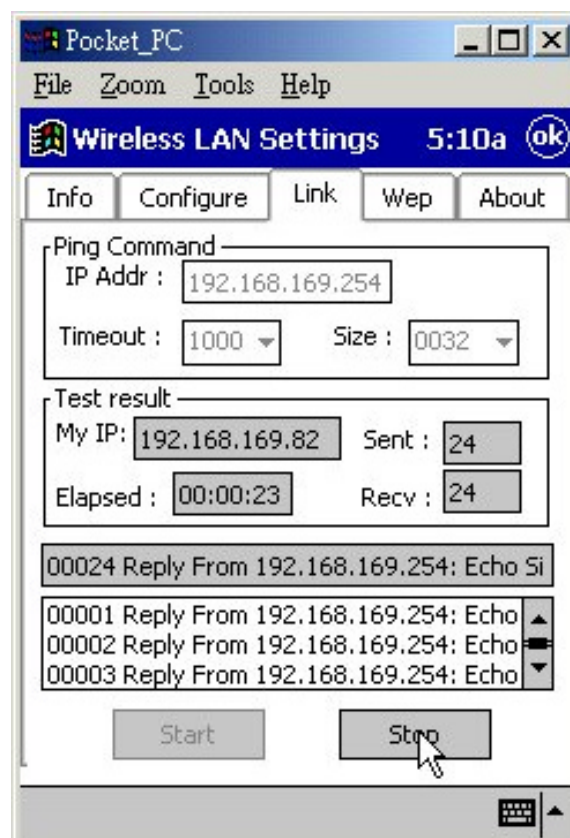
Configure:

This item allows you to modify the configuration parameters for the 11Mbps Wireless Compact Flash Adapter such as ESSID, Network Type, Channel, PS mode, and Tx Rate. After making changes on the configuration, click on the **Modify** button to make the changes take affect.



Link:

Similar to Ping Command, this tool allows you to point-to-point data transmission quality between two stations. By entering IP address of another station and set the timeout and packet size you may know whether the communication has been made successfully or not.



Wep

The encryption function enables you to encrypt and decrypt your wireless data, making your data more secure. To enable the WEP encryption, select the “**Enable**” check box, select the Key Length, either 64 bit or 128 bit, and enter the WEP Keys in the Key field. *For 40-Bits encryption the key values are 10 digit hexadecimal values in the range of “A-F” and “0-9”, preceded by the characters “0x” values (e.g. 11AA22BB33).* *For 128-Bits encryption the key values are 26 digit hexadecimal values in the range of “A-F” and “0-9”, preceded by the characters “0x” values (e.g. 0x11AA22BB33123456789ABCDEFF).* After entering the WEP keys, choose the WEP Key to use and then click **Apply** to make the configuration take effect.



Technical Support

You can find the most recent software and user documentation on your supplier's Web site. If you have difficulty resolving the problem while installing or using the 11Mbps Wireless COMPACT FLASH Adapter, please contact your supplier for support.

FCC Information

This device complies with Part 15 of the FCC Rules. Operation is subject to the following two conditions: (1) this device may not cause harmful interference, and (2) this device must accept any interference received; including interference that may cause undesired operation.

Federal Communications Commission (FCC) Statement

This Equipment has been tested and found to comply with the limits for a Class B digital device, pursuant to Part 15 of the FCC rules. These limits are designed to provide reasonable protection against harmful interference in a residential installation. This equipment generates, uses and can radiate radio frequency energy and, if not installed and used in accordance with the instructions, may cause harmful interference to radio communications. However, there is no guarantee that interference will not occur in a particular installation. If this equipment does cause harmful interference to radio or television reception, which can be determined by turning the equipment off and on, the user is encouraged to try to correct the interference by one or more of the following measures:

- Reorient or relocate the receiving antenna.
- Increase the separation between the equipment and receiver.
- Connect the equipment into an outlet on a circuit different from that to which the receiver is connected.
- Consult the dealer or an experienced radio/TV technician for help.

The Wireless Compact Flash Adapter Specifications

Model	11Mbps Wireless Compact Flash Adapter
Compact Flash Adapter Standard	CF TYPE II
Operating Channels	11 for N. America, 14 Japan, 13 Europe (ETSI), 2 Spain, 4 France
Operating Frequency	2.412-2.462 GHz (N. America FCC) 2.412-2.484 GHz (Japan TELEC) 2.412-2.472 GHz (Europe ETSI) 2.457-2.462 GHz (Spain) 2.457-2.472 GHz (France)
Range	11M: 460 feet = 140m (In open environment) 5.5M: 656 feet = 200m 2M: 885 feet = 270m 1M: 1311 feet = 400m
RF Technology	Direct Sequence Spread Spectrum
Modulation	CCK(11Mbps, 5.5Mbps) , DQPSK(2Mbps) , DBPSK(1Mbps)
Voltage	5V \pm 10% USB power available
Power Consumption	Tx power consumption: < 350mA Rx power consumption: < 250mA Sleep Mode: 17mA
Output Power	15dBm
Sensitivity	@PER < 0.08 11Mbps < -83 dBm 5.5Mbps < -86dBm 2Mbps < -89dBm 1Mbps < -91dBm
Data Rate	1,2,5.5,11 Mbps
Media Access Protocol	CSMA/CA, 802.11 Compliant
Support OS	Windows CE